

# ICD-10-CM Expert for Skilled Nursing Facilities and Inpatient Rehabilitation Facilities

The complete official code set

Codes valid from October 1, 2020  
through September 30, 2021

# 2021

[optum360coding.com](https://www.optum360coding.com)

# Contents

|   |                 |
|---|-----------------|
| <b>Preface..... iii</b>   |                 |
| ICD-10-CM Official Preface .....  | iii             |
| Characteristics of ICD-10-CM .....  | iii             |
| <b>How to Use ICD-10-CM Expert for Skilled Nursing Facilities and Inpatient Rehabilitation Facilities ..... iv</b>                |                 |
| Introduction .....  | iv              |
| What's New .....  | iv              |
| Conversion Table .....  | iv              |
| 10 Steps to Correct Coding .....  | iv              |
| Official ICD-10-CM Guidelines for Coding and Reporting .....  | iv              |
| Indexes .....   | iv              |
| Index to Diseases and Injuries .....  | iv              |
| Neoplasm Table.....   | v               |
| Table of Drugs and Chemicals .....  | v               |
| External Causes Index .....   | v               |
| Index Notations .....   | v               |
| Tabular List of Diseases .....  | vi              |
| Code and Code Descriptions .....  | vi              |
| Tabular Notations .....   | vi              |
| Official Notations .....  | vi              |
| Optum360 Notations .....  | vii             |
| Icons .....   | vii             |
| Color Bars .....  | viii            |
| Chapter-Level Notations .....   | viii            |
| Appendixes .....  | ix              |
| Illustrations .....   | ix              |
| <b>What's New ..... x</b>   |                 |
| Official Updates .....  | x               |
| Proprietary Updates .....   | xiv             |
| <b>Conversion Table of ICD-10-CM Codes ..... xv</b>   |                 |
| <b>10 Steps to Correct Coding..... xvii</b>   |                 |
| <b>ICD-10-CM Official Guidelines for Coding and Reporting ..... Coding Guidelines–1</b>   |                 |
| <b>ICD-10-CM Index to Diseases and Injuries ..... 1</b>   |                 |
| <b>ICD-10-CM Neoplasm Table ..... 330</b>   |                 |
| <b>ICD-10-CM Table of Drugs and Chemicals ..... 349</b>   |                 |
| <b>ICD-10-CM Index to External Causes..... 398</b>  |                 |
| <b>ICD-10-CM Tabular List of Diseases and Injuries ..... 433</b>  |                 |
| Chapter 1.    Certain Infectious and Parasitic Diseases (A00-B99) .....   | 433             |
| Chapter 2.    Neoplasms (C00-D49) .....   | 459             |
| Chapter 3.    Diseases of the Blood and Blood-forming Organs and Certain Disorders Involving the Immune Mechanism (D50-D89) ..... | 501             |
| Chapter 4.    Endocrine, Nutritional and Metabolic Diseases (E00-E89) .....   | 513             |
| Chapter 5.    Mental, Behavioral, and Neurodevelopmental Disorders (F01-F99) .....  | 537             |
| Chapter 6.    Diseases of the Nervous System (G00-G99) .....  | 563             |
| Chapter 7.    Diseases of the Eye and Adnexa (H00-H59) .....  | 585             |
| Chapter 8.    Diseases of the Ear and Mastoid Process (H60-H95) .....   | 623             |
| Chapter 9.    Diseases of the Circulatory System (I00-I99) .....  | 635             |
| Chapter 10.    Diseases of the Respiratory System (J00-J99) .....   | 683             |
| Chapter 11.    Diseases of the Digestive System (K00-K95) .....   | 701             |
| Chapter 12.    Diseases of the Skin and Subcutaneous Tissue (L00-L99) .....   | 725             |
| Chapter 13.    Diseases of the Musculoskeletal System and Connective Tissue (M00-M99) .....                                       | 749             |
| Chapter 14.    Diseases of the Genitourinary System (N00-N99) .....   | 843             |
| Chapter 15.    Pregnancy, Childbirth and the Puerperium (O00-O9A) .....   | 863             |
| Chapter 16.    Certain Conditions Originating in the Perinatal Period (P00-P96) .....   | 905             |
| Chapter 17.    Congenital Malformations, Deformations and Chromosomal Abnormalities (Q00-Q99) .....                               | 919             |
| Chapter 18.    Symptoms, Signs and Abnormal Clinical and Laboratory Findings, Not Elsewhere Classified (R00-R99) .....            | 941             |
| Chapter 19.    Injury, Poisoning and Certain Other Consequences of External Causes (S00-T88) .....                                | 963             |
| Chapter 20.    External Causes of Morbidity (V00-Y99).....  | 1177            |
| Chapter 21.    Factors Influencing Health Status and Contact With Health Services (Z00-Z99) .....                                 | 1239            |
| <b>Appendixes .....Appendixes–1</b>   |                 |
| Appendix A: Valid 3-character ICD-10-CM Codes.....  | Appendixes–1    |
| Appendix B: Pharmacology List 2020.....   | Appendixes–3    |
| Appendix C: Z Codes for Long-Term Drug Use with Associated Drugs .....  | Appendixes–20   |
| Appendix D: Z Codes Only as Principal/First-Listed Diagnosis .....  | Appendixes–23   |
| Appendix E: Skilled Nursing Facility Prospective Payment System Overview .....  | Appendixes–24   |
| Appendix F: PDPM Comorbid Conditions .....  | Appendixes–28   |
| Appendix G: PDPM Return-to-Provider Code List .....   | Appendixes–31   |
| Appendix H: Skilled Nursing Facility Active Diagnosis List.....   | Appendixes–44   |
| Appendix I: Inpatient Rehabilitation Facility Prospective Payment System (PPS) Overview.....                                      | Appendixes–45   |
| Appendix J: Rehabilitation Impairment Categories (RIC).....   | Appendixes–49   |
| Appendix K: RIC Comorbid Conditions .....   | Appendixes–54   |
| Appendix L: Coding Issues for Long-Term Care (LTC).....   | Appendixes–62   |
| <b>Illustrations..... Illustrations–1</b>   |                 |
| Chapter 3.    Diseases of the Blood and Blood-forming Organs and Certain Disorders Involving the Immune Mechanism (D50–D89) ..... | Illustrations–1 |
| Red Blood Cells .....   | Illustrations–1 |
| White Blood Cell .....  | Illustrations–1 |
| Platelet .....  | Illustrations–2 |
| Coagulation .....   | Illustrations–2 |
| Spleen Anatomical Location and External Structures .....  | Illustrations–3 |

|  |                  |   |                  |
|--|------------------|---|------------------|
| Spleen Interior Structures .....   | Illustrations–3  | Upper Respiratory System .....  | Illustrations–27 |
| Chapter 4. Endocrine, Nutritional and Metabolic Diseases (E00–E89) ..... | Illustrations–4  | Lower Respiratory System .....  | Illustrations–27 |
| Endocrine System .....   | Illustrations–4  | Paranasal Sinuses .....   | Illustrations–27 |
| Thyroid .....  | Illustrations–5  | Lung Segments .....   | Illustrations–28 |
| Thyroid and Parathyroid Glands .....                                     | Illustrations–5  | Alveoli .....   | Illustrations–28 |
| Pancreas .....   | Illustrations–6  | Chapter 11. Diseases of the Digestive System (K00–K95) .....                                    | Illustrations–29 |
| Anatomy of the Adrenal Gland .....                                       | Illustrations–6  | Digestive System .....  | Illustrations–29 |
| Structure of an Ovary .....  | Illustrations–7  | Omentum and Mesentery .....   | Illustrations–30 |
| Testis and Associated Structures .....                                   | Illustrations–7  | Peritoneum and Retroperitoneum ...  | Illustrations–30 |
| Thymus .....   | Illustrations–8  | Chapter 12. Diseases of the Skin and Subcutaneous Tissue (L00–L99) .....                        | Illustrations–31 |
| Chapter 6. Diseases of the Nervous System (G00–G99) .....                | Illustrations–9  | Nail Anatomy .....  | Illustrations–31 |
| Brain .....  | Illustrations–9  | Skin and Subcutaneous Tissue .....  | Illustrations–31 |
| Cranial Nerves .....   | Illustrations–9  | Chapter 13. Diseases of the Musculoskeletal System and Connective Tissue (M00–M99) .....        | Illustrations–32 |
| Peripheral Nervous System .....  | Illustrations–10 | Bones and Joints .....  | Illustrations–32 |
| Spinal Cord and Spinal Nerves .....                                      | Illustrations–11 | Shoulder Anterior View .....  | Illustrations–33 |
| Nerve Cell .....   | Illustrations–12 | Shoulder Posterior View .....   | Illustrations–33 |
| Chapter 7. Diseases of the Eye and Adnexa (H00–H59) .....                | Illustrations–13 | Elbow Anterior View .....   | Illustrations–33 |
| Eye .....  | Illustrations–13 | Elbow Posterior View .....  | Illustrations–33 |
| Posterior Pole of Globe/Flow of Aqueous Humor .....                      | Illustrations–13 | Hand .....  | Illustrations–33 |
| Lacrimal System .....  | Illustrations–14 | Hip Anterior View .....   | Illustrations–34 |
| Eye Musculature .....  | Illustrations–14 | Hip Posterior View .....  | Illustrations–34 |
| Eyelid Structures .....  | Illustrations–14 | Knee Anterior View .....  | Illustrations–34 |
| Chapter 8. Diseases of the Ear and Mastoid Process (H60–H95) .....       | Illustrations–15 | Knee Posterior View .....   | Illustrations–34 |
| Ear Anatomy .....  | Illustrations–15 | Foot .....  | Illustrations–34 |
| Chapter 9. Diseases of the Circulatory System (I00–I99) .....            | Illustrations–16 | Muscles.....  | Illustrations–35 |
| Anatomy of the Heart .....   | Illustrations–16 | Chapter 14. Diseases of the Genitourinary System (N00–N99) .....                                | Illustrations–36 |
| Heart Cross Section .....  | Illustrations–16 | Urinary System .....  | Illustrations–36 |
| Heart Valves .....   | Illustrations–17 | Male Genitourinary System .....   | Illustrations–37 |
| Heart Conduction System .....  | Illustrations–17 | Female Internal Genitalia .....   | Illustrations–37 |
| Coronary Arteries .....  | Illustrations–18 | Female Genitourinary Tract Lateral View .....   | Illustrations–37 |
| Arteries .....   | Illustrations–19 | Chapter 15. Pregnancy, Childbirth and the Puerperium (O00–O9A) .....                            | Illustrations–38 |
| Veins .....  | Illustrations–20 | Term Pregnancy – Single Gestation .....   | Illustrations–38 |
| Internal Carotid and Vertebral Arteries and Branches .....               | Illustrations–21 | Twin Gestation–Dichorionic–Diamniotic (DI-DI) .....   | Illustrations–38 |
| External Carotid Artery and Branches .....                               | Illustrations–21 | Twin Gestation–Monochorionic–Diamniotic (MO-DI) .....   | Illustrations–39 |
| Branches of Abdominal Aorta .....  | Illustrations–22 | Twin Gestation–Monochorionic–Monoamniotic (MO-MO) .....   | Illustrations–39 |
| Portal Venous Circulation .....  | Illustrations–22 | Chapter 19. Injury, Poisoning and Certain Other Consequences of External Causes (S00–T88) ..... | Illustrations–40 |
| Lymphatic System .....   | Illustrations–23 | Types of Fractures .....  | Illustrations–40 |
| Axillary Lymph Nodes .....   | Illustrations–24 | Salter-Harris Fracture Types .....  | Illustrations–40 |
| Lymphatic System of Head and Neck .....                                  | Illustrations–24 |   |                  |
| Lymphatic Capillaries .....  | Illustrations–25 |   |                  |
| Lymphatic Drainage .....   | Illustrations–25 |   |                  |
| Chapter 10. Diseases of the Respiratory System (J00–J99) .....           | Illustrations–26 |   |                  |
| Respiratory System .....   | Illustrations–26 |   |                  |

## Neoplasm Table

The Neoplasm Table is arranged in alphabetic order by anatomical site. Codes are then listed in individual columns based upon the histological behavior (malignant, in situ, benign, uncertain, or unspecified) of the neoplasm.

## Table of Drugs and Chemicals

The Table of Drugs and Chemicals is arranged in alphabetic order by the specific drug or chemical name. Codes are listed in individual columns based upon the associated intent (poisoning, adverse effect, or underdosing).

## External Causes Index

The External Causes Index is arranged in alphabetic order by main terms that describe the cause, the intent, the place of occurrence, the activity, and the status of the patient at the time the injury occurred or health condition arose.

## Index Notations

### With

The word “with” or “in” should be interpreted to mean “associated with” or “due to.” The classification presumes a causal relationship between the two conditions linked by these terms in the index. These conditions should be coded as related even in the absence of provider documentation explicitly linking them unless the documentation clearly states the conditions are unrelated or when another guideline specifically requires a documented linkage between two conditions (e.g., the sepsis guideline for “acute organ dysfunction that is not clearly associated with the sepsis”). For conditions not specifically linked by these relational terms in the classification or when a guideline requires explicit documentation of a linkage between two conditions, provider documentation must link the conditions to code them as related.

The word “with” in the index is sequenced immediately following the main term, not in alphabetical order.

#### **Dermatopolymyositis** M33.90

with

myopathy M33.92

respiratory involvement M33.91

specified organ involvement NEC M33.99

in neoplastic disease — *see also* Neoplasm D49.9 [M36.0]

### See

When the instruction “see” follows a term in the index, it indicates that another term must be referenced to locate the correct code.

#### **Hematooperitoneum** — *see* Hemoperitoneum

### See Also

The instructional note “see also” simply provides alternative terms the coder may reference that may be useful in determining the correct code but are not necessary to follow if the main term supplies the appropriate code.

#### **Hematuria** — *see also* Hemaglobinuria malarial B50.8

### Default Codes

In the index, the default code is the code listed next to the main term and represents the condition most commonly associated with that main term. This code may be assigned when documentation does not support reporting a more specific code. Alternatively, it may provide an unspecified code for the condition.

#### **Headache** R51

allergic NEC G44.89

associated with sexual activity G44.82

chronic daily R51

### Parentheses

Parentheses in the indexes enclose nonessential modifiers, supplementary words that may be present or absent in the statement of a disease without affecting the code.

#### **Pseudomeningocele** (cerebral) (infective) (post-traumatic) G96.19 postprocedural (spinal) G97.82

### Brackets

ICD-10-CM has a coding convention addressing code assignment for manifestations that occur as a result of an underlying condition. This convention requires the underlying condition to be sequenced first, followed by the code or codes for the associated manifestation. In the index, italicized codes in brackets identify manifestation codes.

#### **Polyneuropathy** (peripheral) G62.9 alcoholic G62.1 amyloid (Portuguese) E85.1 [G63] transthyretin-related (ATTR) familial E85.1 [G63]

### Shaded Guides

Exclusive vertical shaded guides in the Index to Diseases and Injuries and External Causes Index help the user easily follow the indent levels for the subentries under a main term. Sequencing rules may apply depending on the level of indent for separate subentries.

#### **Hemicrania**

congenital malformation Q00.0

continua G44.51

meaning migraine — *see also* Migraine G43.909

paroxysmal G44.039

chronic G44.049

intractable G44.041

not intractable G44.049

episodic G44.039

intractable G44.031

not intractable G44.039

intractable G44.031

not intractable G44.039

### Following References

The Index to Diseases and Injuries includes following references to assist in locating out-of-sequence codes in the tabular list. Out-of-sequence codes contain an alphabetic character (letter) in the third- or 4th-character position. These codes are placed according to the classification rules — according to condition — not according to alphabetic or numeric sequencing rules.

#### **Carcinoma** (malignant) — *see also* Neoplasm, by site, malignant neuroendocrine — *see also* Tumor, neuroendocrine high grade, any site C7A.1 (*following* C75) poorly differentiated, any site C7A.1 (*following* C75)

### Additional Character Required

The Index to Diseases and Injuries, Neoplasm Table, and External Causes Index provide an icon after certain codes to signify to the user that additional characters are required to make the code valid. The tabular list should be consulted for appropriate character selection.

#### **Fall, falling** (accidental) W19 building W20.1

## Tabular List of Diseases

ICD-10-CM codes and descriptions are arranged numerically within the tabular list of diseases with 19 separate chapters providing codes associated with a particular body system or nature of injury or disease. There is also a chapter providing codes for external causes of an injury or health conditions and finally a chapter for codes that address encounters with healthcare facilities for circumstances other than a disease or injury.

## Code and Code Descriptions

ICD-10-CM is an alphanumeric classification system that contains categories, subcategories, and valid codes. The first character is always a letter with any additional characters represented by either a letter or number. A three-character category without further subclassification is equivalent to a valid three-character code. Valid codes may be three, four, five, six, or seven characters in length, with each level of subdivision after a three-character category representing a subcategory. The final level of subdivision is a valid code.

### Boldface

Boldface type is used for all codes and descriptions in the tabular list.

### Italics

Italicized type is used to identify manifestation codes, those codes that should not be reported as first-listed diagnoses.

### Deleted Text

~~Strikethrough~~ on a code and code description indicates a deletion from the classification for the current year.

### Key Word

Green font is used throughout the Tabular List of Diseases to differentiate the key words that appear in similar code descriptions in a given category or subcategory. The key word convention is used only in those categories in which there are multiple codes with very similar descriptions with only a few words that differentiate them.

For example, refer to the list of codes below from category H55:

|                  |  |
|------------------|--|
| ✓4 <sup>th</sup> | <b>H55 Nystagmus and other irregular eye movements</b> |
| ✓5 <sup>th</sup> | <b>H55.0 Nystagmus</b>                                 |
|                  | <b>H55.00 Unspecified nystagmus</b>                    |
|                  | <b>H55.01 Congenital nystagmus</b>                     |
|                  | <b>H55.02 Latent nystagmus</b>                         |
|                  | <b>H55.03 Visual deprivation nystagmus</b>             |
|                  | <b>H55.04 Dissociated nystagmus</b>                    |
|                  | <b>H55.09 Other forms of nystagmus</b>                 |

The portion of the code description that appears in **green font** in the tabular list helps the coder quickly identify the key terms and the correct code. This convention is especially useful when the codes describe laterality, such as the following codes from subcategory H40.22:

|                  |  |
|------------------|--|
| ✓6 <sup>th</sup> | <b>H40.22 Chronic angle-closure glaucoma</b>                   |
|                  | Chronic primary angle-closure glaucoma                         |
| ✓7 <sup>th</sup> | <b>H40.221 Chronic angle-closure glaucoma, right eye</b>       |
| ✓7 <sup>th</sup> | <b>H40.222 Chronic angle-closure glaucoma, left eye</b>        |
| ✓7 <sup>th</sup> | <b>H40.223 Chronic angle-closure glaucoma, bilateral</b>       |
| ✓7 <sup>th</sup> | <b>H40.229 Chronic angle-closure glaucoma, unspecified eye</b> |

## Tabular Notations

Official parenthetical notes as well as Optum360's supplementary notations are provided at the chapter, code block, category, subcategory, and individual code level to help the user assign proper codes. The information in the notation can apply to one or more codes depending on where the citation is placed.

## Official Notations

### Includes Notes

The word **INCLUDES** appears immediately under certain categories to further define, clarify, or give examples of the content of a code category.

### Inclusion Terms

Lists of inclusion terms are included under certain codes. These terms indicate some of the conditions for which that code number may be used. Inclusion terms may be synonyms with the code title, or, in the case of "other specified" codes, the terms may also provide a list of various conditions included within a classification code. The inclusion terms are not exhaustive. The index may provide additional terms that may also be assigned to a given code.

### Excludes Notes

ICD-10-CM has two types of excludes notes. Each note has a different definition for use. However, they are similar in that they both indicate that codes excluded from each other are independent of each other.

#### Excludes 1

An **EXCLUDES 1** note is a "pure" excludes. It means "NOT CODED HERE!" An Excludes 1 note indicates mutually exclusive codes: two conditions that cannot be reported together. An Excludes 1 note indicates that the code excluded should never be used at the same time as the code above the Excludes 1 note. An Excludes 1 is used when two conditions cannot occur together, such as a congenital form versus an acquired form of the same condition.

An exception to the Excludes 1 definition is when the two conditions are unrelated to each other. If it is not clear whether the two conditions involving an Excludes 1 note are related or not, query the provider. For example, code F45.8 Other somatoform disorders, has an Excludes 1 note for "sleep related teeth grinding (G47.63)" because "teeth grinding" is an inclusion term under F45.8. Only one of these two codes should be assigned for teeth grinding. However, psychogenic dysmenorrhea is also an inclusion term under F45.8, and a patient could have both this condition and sleep-related teeth grinding. In this case, the two conditions are clearly unrelated to each other, so it would be appropriate to report F45.8 and G47.63 together.

#### Excludes 2

An **EXCLUDES 2** note means "NOT INCLUDED HERE." An Excludes 2 note indicates that although the excluded condition is not part of the condition it is excluded from, a patient may have both conditions at the same time. Therefore, when an Excludes 2 note appears under a code, it may be acceptable to use both the code and the excluded code together if supported by the medical documentation.

### Note

The term "NOTE" appears as an icon and precedes the instructional information. These notes function as alerts to highlight coding instructions within the text.

### Code First/Use additional code

These instructional notes provide sequencing instruction. They may appear independently of each other or to designate certain etiology/manifestation paired codes. These instructions signal the coder that an additional code should be reported to provide a more complete picture of that diagnosis.

In etiology/manifestation coding, ICD-10-CM requires the underlying condition to be sequenced first, followed by the manifestation. In these situations, codes with "In diseases classified elsewhere" in the code description are never permitted as a first-listed or principal diagnosis code and must be sequenced following the underlying condition code.

### Code Also

A "code also" note alerts the coder that more than one code may be required to fully describe the condition. The sequencing depends on the



## Appendixes

The additional resources described below have been included as appendixes for this book. These resources further instruct the professional coder on the appropriate application of the ICD-10-CM code set.

### Appendix A: Valid 3-character ICD-10-CM Codes

The user may consult this table to confirm that no further specificity, such as the use of 4th, 5th, 6th, or 7th characters or placeholders (X), is necessary. All ICD-10-CM codes that are valid at the three-character level are listed.

### Appendix B: Pharmacology List 2020

This reference is a comprehensive but not all-inclusive list of pharmacological agents used to treat acute and/or chronic conditions. Drugs are listed in alphabetical order by their brand and/or generic names along with their drug action and indications for which they may commonly be prescribed. Some drugs have also been mapped to their appropriate Z code for long-term drug use.

### Appendix C: Z Codes for Long-Term Drug Use with Associated Drugs

This resource correlates Z codes that are used to identify current long-term drug use with a list of drugs that are typically categorized to that class of drug.

**Note:** These tables are not all-inclusive but list some of the more commonly used drugs.

### Appendix D: Z Codes Only as Principal/First-Listed Diagnosis

Chapter 21, "Factors Influencing Health Status and Contact with Health Services," provides codes to deal with encounters for circumstances other than a disease or injury. Many of these codes may be reported *only* as the principal/first-listed diagnosis. This resource lists all of these codes in one table for quick and easy reference to ensure accurate reporting.

### Appendix E: Skilled Nursing Facility Prospective Payment System Overview

To better classify residents for payment purposes and to ensure that residents' care needs are addressed, Medicare has developed the Patient-Driven Payment Model (PDP), which will replace the current RUG-IV classification system. Payments will predominantly be based on clinical characteristics instead of service provision. This resource describes the PDP and its elements, as well as how this classification system will be used within the skilled nursing facility prospective payment system (SNF PPS).

### Appendix F: PDPM Comorbid Conditions

This resource provides a comprehensive list of the ICD-10-CM codes that are considered comorbid conditions for the non-therapy ancillary (NTA) and the speech-language pathology (SLP) components of the PDPM.

### Appendix G: PDPM Return-to-Provider Code List

This resource provides a comprehensive list of the ICD-10-CM codes that are *not* acceptable as the primary reason for SNF care. When one of these codes is listed as the primary diagnosis code on the minimum data set (MDS), the MDS should be returned to the provider to select an appropriate ICD-10-CM diagnosis code.

### Appendix H: Skilled Nursing Facility Active Diagnosis List

This resource includes the minimum data set (MDS) data elements that capture the relevant diagnostic or surgical information needed to calculate one or more of the components in PDPM.

### Appendix I: Inpatient Rehabilitation Facility Prospective Payment System (PPS) Overview

The inpatient rehabilitation facility prospective payment system (IRF PPS) provides payment rates for rehabilitation facilities providing post-acute care for patients that require additional services to restore the patient's ability to live and work after a disabling injury or illness. This resource summarizes the revisions to the Quality Reporting Program, changes to the IRF-PAI instrument, IRF requirements, and the proposed changes to the IRF PPS for FY 2019.

### Appendix J: Rehabilitation Impairment Categories (RIC)

This resource provides a reference of all rehabilitation impairment categories (RIC) and the ICD-10-CM codes associated with each RIC.

### Appendix K: RIC Comorbid Conditions

Certain conditions when listed as a secondary diagnosis during a rehabilitation admission may qualify that stay for payment adjustment. All diagnoses that are considered comorbid conditions are identified in this resource in addition to any rehabilitation categories from which the comorbid condition would be exempt.

### Appendix L: Coding Issues for Long-Term Care (LTC)

This resource identifies coding and reporting issues that may be encountered in the long-term (post-acute) care setting. Specific case scenarios along with the applicable ICD-10-CM code(s) and rationales are provided.

## Illustrations

This section includes illustrations of normal anatomy with ICD-10-CM-specific terminology.

**Admission** — *continued*  
 fitting — *continued*  
 device — *continued*  
 prosthetic — *continued*  
 dental Z46.3  
 eye Z44.2 ■  
 substitution  
 auditory Z46.2  
 implanted — *see* Admission, adjustment, device, implanted, hearing device  
 nervous system Z46.2  
 implanted — *see* Admission, adjustment, device, implanted, nervous system  
 visual Z46.2  
 implanted Z45.31  
 hearing aid Z46.1  
 ileostomy device Z46.89  
 intestinal appliance or device NEC Z46.89  
 neuromodulator (brain) (peripheral nerve) (spinal cord) Z46.2  
 implanted Z45.42  
 orthodontic device Z46.4  
 orthopedic device (brace) (cast) (shoes) Z46.89  
 prosthesis Z44.9  
 arm — *see* Admission, adjustment, artificial, arm  
 breast Z44.3 ■  
 dental Z46.3  
 eye Z44.2 ■  
 leg — *see* Admission, adjustment, artificial, leg  
 specified type NEC Z44.8  
 spectacles Z46.0  
 follow-up examination Z09  
 intrauterine device management Z30.431  
 initial prescription Z30.014  
 mental health evaluation Z00.8  
 requested by authority Z04.6  
 observation — *see* Observation  
 Papanicolaou smear, cervix Z12.4  
 for suspected malignant neoplasm Z12.4  
 plastic and reconstructive surgery following medical procedure or healed injury NEC Z42.8  
 plastic surgery, cosmetic NEC Z41.1  
 postpartum observation  
 immediately after delivery Z39.0  
 routine follow-up Z39.2  
 poststerilization (for restoration) Z31.0  
 aftercare Z31.42  
 preoperative management Z31.9  
 prophylactic (measure) — *see also* Encounter, prophylactic measures  
 organ removal Z40.00  
 breast Z40.01  
 fallopian tube(s) Z40.03  
 with ovary(s) Z40.02  
 ovary(s) Z40.02  
 specified organ NEC Z40.09  
 testes Z40.09  
 vaccination Z23  
 psychiatric examination (general) Z00.8  
 requested by authority Z04.6  
 radiation therapy (antineoplastic) Z51.0  
 reconstructive surgery following medical procedure or healed injury NEC Z42.8  
 removal of  
 cystostomy catheter Z43.5  
 drains Z48.03  
 dressing (nonsurgical) Z48.00  
 implantable subdermal contraceptive Z30.46  
 intrauterine contraceptive device Z30.432  
 neuromodulator (brain) (peripheral nerve) (spinal cord) Z46.2  
 implanted Z45.42  
 staples Z48.02  
 surgical dressing Z48.01  
 sutures Z48.02  
 ureteral stent Z46.6  
 respirator [ventilator] use during power failure Z99.12  
 restoration of organ continuity (poststerilization) Z31.0  
 aftercare Z31.42  
 sensitivity test — *see also* Test, skin  
 allergy NEC Z01.82  
 Mantoux Z11.1  
 tuboplasty following previous sterilization Z31.0  
 aftercare Z31.42  
 vasoplasty following previous sterilization Z31.0  
 aftercare Z31.42  
 vision examination Z01.00  
 with abnormal findings Z01.01

**Admission** — *continued*  
 vision examination — *continued*  
 following failed vision screening Z01.020  
 with abnormal findings Z01.021  
 infant or child (over 28 days old) Z00.129  
 with abnormal findings Z00.121  
 waiting period for admission to other facility Z75.1  
**Adnexitis** (suppurative) — *see* Salpingo-oophoritis  
**Adolescent X-linked adrenoleukodystrophy** E71.521  
**Adrenal** (gland) — *see* condition  
**Adrenalism, tuberculous** A18.7  
**Adrenitis, adenitis** E27.8  
 autoimmune E27.1  
 meningococcal, hemorrhagic A39.1  
**Adrenarche, premature** E27.0  
**Adrenocortical syndrome** — *see* Cushing's, syndrome  
**Adrenogenital syndrome** E25.9  
 acquired E25.8  
 congenital E25.0  
 salt loss E25.0  
**Adrenogenitalism, congenital** E25.0  
**Adrenoleukodystrophy** E71.529  
 neonatal E71.511  
 X-linked E71.529  
 Addison only phenotype E71.528  
 Addison-Schilder E71.528  
 adolescent E71.521  
 adrenomyeloneuropathy E71.522  
 childhood cerebral E71.520  
 other specified E71.528  
**Adrenomyeloneuropathy** E71.522  
**Adventitious bursa** — *see* Bursopathy, specified type  
 NEC  
**Adverse effect** — *see* Table of Drugs and Chemicals, categories T36-T50, with 6th character 5  
**Advice** — *see* Counseling  
**Adynamia** (episodic) (hereditary) (periodic) G72.3  
**Aeration lung imperfect, newborn** — *see* Atelectasis  
**Aerobullosis** T70.3 ■  
**Aerocele** — *see* Embolism, air  
**Aerodermatitis**  
 subcutaneous (traumatic) T79.7 ■  
**Aerodontalgia** T70.29 ■  
**Aeroembolism** T70.3 ■  
**Aerogenes capsulatus infection** A48.0  
**Aero-otitis media** T70.0 ■  
**Aerophagy, aerophagia** (psychogenic) F45.8  
**Aerophobia** F40.228  
**Aerosinusitis** T70.1 ■  
**Aerotitis** T70.0 ■  
**Affection** — *see* Disease  
**Afibrinogenemia** — *see also* Defect, coagulation D68.8  
 acquired D65  
 congenital D68.2  
 following ectopic or molar pregnancy O08.1  
 in abortion — *see* Abortion, by type, complicated by, afibrinogenemia  
 puerperal O72.3  
**African**  
 sleeping sickness B56.9  
 tick fever A68.1  
 trypanosomiasis B56.9  
 gambian B56.0  
 rhodesian B56.1  
**Aftercare** — *see also* Care Z51.89  
 following surgery (for) (on)  
 amputation Z47.81  
 attention to  
 drains Z48.03  
 dressings (nonsurgical) Z48.00  
 surgical Z48.01  
 sutures Z48.02  
 circulatory system Z48.812  
 delayed (planned) wound closure Z48.1  
 digestive system Z48.815  
 explantation of joint prosthesis (staged procedure)  
 hip Z47.32  
 knee Z47.33  
 shoulder Z47.31  
 genitourinary system Z48.816  
 joint replacement Z47.1  
 neoplasm Z48.3  
 nervous system Z48.811  
 oral cavity Z48.814  
 organ transplant  
 bone marrow Z48.290  
 heart Z48.21  
 heart-lung Z48.280

**Aftercare** — *continued*  
 following surgery — *continued*  
 organ transplant — *continued*  
 kidney Z48.22  
 liver Z48.23  
 lung Z48.24  
 multiple organs NEC Z48.288  
 specified NEC Z48.298  
 orthopedic NEC Z47.89  
 planned wound closure Z48.1  
 removal of internal fixation device Z47.2  
 respiratory system Z48.813  
 scoliosis Z47.82  
 sense organs Z48.810  
 skin and subcutaneous tissue Z48.817  
 specified body system  
 circulatory Z48.812  
 digestive Z48.815  
 genitourinary Z48.816  
 nervous Z48.811  
 oral cavity Z48.814  
 respiratory Z48.813  
 sense organs Z48.810  
 skin and subcutaneous tissue Z48.817  
 teeth Z48.814  
 specified NEC Z48.89  
 spinal Z47.89  
 teeth Z48.814  
 fracture — *code to* fracture with seventh character D  
 involving  
 removal of  
 drains Z48.03  
 dressings (nonsurgical) Z48.00  
 staples Z48.02  
 surgical dressings Z48.01  
 sutures Z48.02  
 neuromodulator (brain) (peripheral nerve) (spinal cord) Z46.2  
 implanted Z45.42  
 orthopedic NEC Z47.89  
 postprocedural — *see* Aftercare, following surgery  
**After-cataract** — *see* Cataract, secondary  
**Agalactia** (primary) O92.3  
 elective, secondary or therapeutic O92.5  
**Agammaglobulinemia** (acquired (secondary) (nonfamilial)) D80.1  
 with  
 immunoglobulin-bearing B-lymphocytes D80.1  
 lymphopenia D81.9  
 autosomal recessive (Swiss type) D80.0  
 Bruton's X-linked D80.0  
 common variable (CVAgamma) D80.1  
 congenital sex-linked D80.0  
 hereditary D80.0  
 lymphopenic D81.9  
 Swiss type (autosomal recessive) D80.0  
 X-linked (with growth hormone deficiency) (Bruton) D80.0  
**Aganglionosis** (bowel) (colon) Q43.1  
**Age** (old) — *see* Senility  
**Agensis**  
 adrenal (gland) Q89.1  
 alimentary tract (complete) (partial) NEC Q45.8  
 upper Q40.8  
 anus, anal (canal) Q42.3  
 with fistula Q42.2  
 aorta Q25.41  
 appendix Q42.8  
 arm (complete) Q71.0- ■  
 with hand present Q71.1- ■  
 artery (peripheral) Q27.9  
 brain Q28.3  
 coronary Q24.5  
 pulmonary Q25.79  
 specified NEC Q27.8  
 umbilical Q27.0  
 auditory (canal) (external) Q16.1  
 auricle (ear) Q16.0  
 bile duct or passage Q44.5  
 bladder Q64.5  
 bone Q79.9  
 brain Q00.0  
 part of Q04.3  
 breast (with nipple present) Q83.8  
 with absent nipple Q83.0  
 bronchus Q32.4  
 canaliculus lacrimalis Q10.4  
 carpus — *see* Agensis, hand

## Sodium

## ICD-10-CM 2021

| Substance  | Poisoning, Accidental (unintentional) | Poisoning, Intentional Self-harm | Poisoning, Assault | Poisoning, Undetermined | Adverse Effect | Under-dosing |
|--|---------------------------------------|----------------------------------|--------------------|-------------------------|----------------|--------------|
| <b>Sodium — continued</b>                        |                                       |                                  |                    |                         |                |              |
| salt NEC   | T50.3X1                               | T50.3X2                          | T50.3X3            | T50.3X4                 | T50.3X5        | T50.3X6      |
| selenate   | T60.2X1                               | T60.2X2                          | T60.2X3            | T60.2X4                 | —              | —            |
| stibogluconate                                   | T37.3X1                               | T37.3X2                          | T37.3X3            | T37.3X4                 | T37.3X5        | T37.3X6      |
| sulfate  | T47.4X1                               | T47.4X2                          | T47.4X3            | T47.4X4                 | T47.4X5        | T47.4X6      |
| sulfoxone  | T37.1X1                               | T37.1X2                          | T37.1X3            | T37.1X4                 | T37.1X5        | T37.1X6      |
| tetradecyl sulfate                               | T46.8X1                               | T46.8X2                          | T46.8X3            | T46.8X4                 | T46.8X5        | T46.8X6      |
| thiopental                                       | T41.1X1                               | T41.1X2                          | T41.1X3            | T41.1X4                 | T41.1X5        | T41.1X6      |
| thiosalicylate                                   | T39.0X1                               | T39.0X2                          | T39.0X3            | T39.0X4                 | T39.0X5        | T39.0X6      |
| thiosulfate                                      | T50.6X1                               | T50.6X2                          | T50.6X3            | T50.6X4                 | T50.6X5        | T50.6X6      |
| tolbutamide                                      | T38.3X1                               | T38.3X2                          | T38.3X3            | T38.3X4                 | T38.3X5        | T38.3X6      |
| (L)-triiodothyronine                             | T38.1X1                               | T38.1X2                          | T38.1X3            | T38.1X4                 | T38.1X5        | T38.1X6      |
| tyropanoate                                      | T50.8X1                               | T50.8X2                          | T50.8X3            | T50.8X4                 | T50.8X5        | T50.8X6      |
| valproate  | T42.6X1                               | T42.6X2                          | T42.6X3            | T42.6X4                 | T42.6X5        | T42.6X6      |
| versenate  | T50.6X1                               | T50.6X2                          | T50.6X3            | T50.6X4                 | T50.6X5        | T50.6X6      |
| <b>Sodium-free salt</b>                          | T50.901                               | T50.902                          | T50.903            | T50.904                 | T50.905        | T50.906      |
| <b>Sodium-removing resin</b>                     | T50.3X1                               | T50.3X2                          | T50.3X3            | T50.3X4                 | T50.3X5        | T50.3X6      |
| <b>Soft soap</b>                                 | T55.0X1                               | T55.0X2                          | T55.0X3            | T55.0X4                 | —              | —            |
| <b>Solanine</b>                                  | T62.2X1                               | T62.2X2                          | T62.2X3            | T62.2X4                 | —              | —            |
| berries  | T62.1X1                               | T62.1X2                          | T62.1X3            | T62.1X4                 | —              | —            |
| <b>Solanum dulcamara</b>                         | T62.2X1                               | T62.2X2                          | T62.2X3            | T62.2X4                 | —              | —            |
| berries  | T62.1X1                               | T62.1X2                          | T62.1X3            | T62.1X4                 | —              | —            |
| <b>Solapson</b>                                  | T37.1X1                               | T37.1X2                          | T37.1X3            | T37.1X4                 | T37.1X5        | T37.1X6      |
| <b>Solar lotion</b>                              | T49.3X1                               | T49.3X2                          | T49.3X3            | T49.3X4                 | T49.3X5        | T49.3X6      |
| <b>Solasthene</b>                                | T37.1X1                               | T37.1X2                          | T37.1X3            | T37.1X4                 | T37.1X5        | T37.1X6      |
| <b>Soldering fluid</b>                           | T65.891                               | T65.892                          | T65.893            | T65.894                 | —              | —            |
| <b>Solid substance</b>                           | T65.91                                | T65.92                           | T65.93             | T65.94                  | —              | —            |
| specified NEC                                    | T65.891                               | T65.892                          | T65.893            | T65.894                 | —              | —            |
| <b>Solvent, industrial NEC</b>                   | T52.91                                | T52.92                           | T52.93             | T52.94                  | —              | —            |
| naphtha  | T52.0X1                               | T52.0X2                          | T52.0X3            | T52.0X4                 | —              | —            |
| petroleum  | T52.0X1                               | T52.0X2                          | T52.0X3            | T52.0X4                 | —              | —            |
| specified NEC                                    | T52.8X1                               | T52.8X2                          | T52.8X3            | T52.8X4                 | —              | —            |
| <b>Soma</b>                                      | T42.8X1                               | T42.8X2                          | T42.8X3            | T42.8X4                 | T42.8X5        | T42.8X6      |
| <b>Somatorelin</b>                               | T38.891                               | T38.892                          | T38.893            | T38.894                 | T38.895        | T38.896      |
| <b>Somatostatin</b>                              | T38.991                               | T38.992                          | T38.993            | T38.994                 | T38.995        | T38.996      |
| <b>Somatotropin</b>                              | T38.811                               | T38.812                          | T38.813            | T38.814                 | T38.815        | T38.816      |
| <b>Somatrem</b>                                  | T38.811                               | T38.812                          | T38.813            | T38.814                 | T38.815        | T38.816      |
| <b>Somatropin</b>                                | T38.811                               | T38.812                          | T38.813            | T38.814                 | T38.815        | T38.816      |
| <b>Sominex</b>                                   | T45.0X1                               | T45.0X2                          | T45.0X3            | T45.0X4                 | T45.0X5        | T45.0X6      |
| <b>Somnol</b>                                    | T42.6X1                               | T42.6X2                          | T42.6X3            | T42.6X4                 | T42.6X5        | T42.6X6      |
| <b>Somonal</b>                                   | T42.3X1                               | T42.3X2                          | T42.3X3            | T42.3X4                 | T42.3X5        | T42.3X6      |
| <b>Soneryl</b>                                   | T42.3X1                               | T42.3X2                          | T42.3X3            | T42.3X4                 | T42.3X5        | T42.3X6      |
| <b>Soothing syrup</b>                            | T50.901                               | T50.902                          | T50.903            | T50.904                 | T50.905        | T50.906      |
| <b>Sopor</b>                                     | T42.6X1                               | T42.6X2                          | T42.6X3            | T42.6X4                 | T42.6X5        | T42.6X6      |
| <b>Soporific</b>                                 | T42.71                                | T42.72                           | T42.73             | T42.74                  | T42.75         | T42.76       |
| <b>Soporific drug</b>                            | T42.71                                | T42.72                           | T42.73             | T42.74                  | T42.75         | T42.76       |
| specified type NEC                               | T42.6X1                               | T42.6X2                          | T42.6X3            | T42.6X4                 | T42.6X5        | T42.6X6      |
| <b>Sorbide nitrate</b>                           | T46.3X1                               | T46.3X2                          | T46.3X3            | T46.3X4                 | T46.3X5        | T46.3X6      |
| <b>Sorbitol</b>                                  | T47.4X1                               | T47.4X2                          | T47.4X3            | T47.4X4                 | T47.4X5        | T47.4X6      |
| <b>Sotalol</b>                                   | T44.7X1                               | T44.7X2                          | T44.7X3            | T44.7X4                 | T44.7X5        | T44.7X6      |
| <b>Sotradecol</b>                                | T46.8X1                               | T46.8X2                          | T46.8X3            | T46.8X4                 | T46.8X5        | T46.8X6      |
| <b>Soysterol</b>                                 | T46.6X1                               | T46.6X2                          | T46.6X3            | T46.6X4                 | T46.6X5        | T46.6X6      |
| <b>Spacoline</b>                                 | T44.3X1                               | T44.3X2                          | T44.3X3            | T44.3X4                 | T44.3X5        | T44.3X6      |
| <b>Spanish fly</b>                               | T49.8X1                               | T49.8X2                          | T49.8X3            | T49.8X4                 | T49.8X5        | T49.8X6      |
| <b>Sparine</b>                                   | T43.3X1                               | T43.3X2                          | T43.3X3            | T43.3X4                 | T43.3X5        | T43.3X6      |
| <b>Sparteine</b>                                 | T48.0X1                               | T48.0X2                          | T48.0X3            | T48.0X4                 | T48.0X5        | T48.0X6      |
| <b>Spasmolytic</b>                               |                                       |                                  |                    |                         |                |              |
| anticholinergics                                 | T44.3X1                               | T44.3X2                          | T44.3X3            | T44.3X4                 | T44.3X5        | T44.3X6      |
| autonomic  | T44.3X1                               | T44.3X2                          | T44.3X3            | T44.3X4                 | T44.3X5        | T44.3X6      |
| bronchial NEC                                    | T48.6X1                               | T48.6X2                          | T48.6X3            | T48.6X4                 | T48.6X5        | T48.6X6      |
| quaternary ammonium                              | T44.3X1                               | T44.3X2                          | T44.3X3            | T44.3X4                 | T44.3X5        | T44.3X6      |
| skeletal muscle NEC                              | T48.1X1                               | T48.1X2                          | T48.1X3            | T48.1X4                 | T48.1X5        | T48.1X6      |
| <b>Spectinomycin</b>                             | T36.5X1                               | T36.5X2                          | T36.5X3            | T36.5X4                 | T36.5X5        | T36.5X6      |
| <b>Speed</b>                                     | T43.621                               | T43.622                          | T43.623            | T43.624                 | T43.625        | T43.626      |
| <b>Spermicide</b>                                | T49.8X1                               | T49.8X2                          | T49.8X3            | T49.8X4                 | T49.8X5        | T49.8X6      |
| <b>Spider (bite) (venom)</b>                     | T63.391                               | T63.392                          | T63.393            | T63.394                 | —              | —            |
| antivenin  | T50.211                               | T50.212                          | T50.213            | T50.214                 | T50.215        | T50.216      |
| <b>Spigelia (root)</b>                           | T37.4X1                               | T37.4X2                          | T37.4X3            | T37.4X4                 | T37.4X5        | T37.4X6      |
| <b>Spindle inactivator</b>                       | T50.4X1                               | T50.4X2                          | T50.4X3            | T50.4X4                 | T50.4X5        | T50.4X6      |
| <b>Spiroperone</b>                               | T43.4X1                               | T43.4X2                          | T43.4X3            | T43.4X4                 | T43.4X5        | T43.4X6      |
| <b>Spiramycin</b>                                | T36.3X1                               | T36.3X2                          | T36.3X3            | T36.3X4                 | T36.3X5        | T36.3X6      |
| <b>Spirapril</b>                                 | T46.4X1                               | T46.4X2                          | T46.4X3            | T46.4X4                 | T46.4X5        | T46.4X6      |
| <b>Spirilene</b>                                 | T43.591                               | T43.592                          | T43.593            | T43.594                 | T43.595        | T43.596      |
| <b>Spirit(s) (neutral) NEC</b>                   | T51.0X1                               | T51.0X2                          | T51.0X3            | T51.0X4                 | —              | —            |
| beverage   | T51.0X1                               | T51.0X2                          | T51.0X3            | T51.0X4                 | —              | —            |
| industrial                                       | T51.0X1                               | T51.0X2                          | T51.0X3            | T51.0X4                 | —              | —            |
| mineral  | T52.0X1                               | T52.0X2                          | T52.0X3            | T52.0X4                 | —              | —            |
| of salt — see Hydrochloric acid                  |                                       |                                  |                    |                         |                |              |
| surgical   | T51.0X1                               | T51.0X2                          | T51.0X3            | T51.0X4                 | —              | —            |
| <b>Spirolactone</b>                              | T50.0X1                               | T50.0X2                          | T50.0X3            | T50.0X4                 | T50.0X5        | T50.0X6      |
| <b>Spiroperidol</b>                              | T43.4X1                               | T43.4X2                          | T43.4X3            | T43.4X4                 | T43.4X5        | T43.4X6      |
| <b>Sponge, absorbable (gelatin)</b>              | T45.7X1                               | T45.7X2                          | T45.7X3            | T45.7X4                 | T45.7X5        | T45.7X6      |
| <b>Sporostacin</b>                               | T49.0X1                               | T49.0X2                          | T49.0X3            | T49.0X4                 | T49.0X5        | T49.0X6      |
| <b>Spray (aerosol)</b>                           | T65.91                                | T65.92                           | T65.93             | T65.94                  | —              | —            |
| cosmetic   | T65.891                               | T65.892                          | T65.893            | T65.894                 | T50.905        | T50.906      |
| medicinal NEC                                    | T50.901                               | T50.902                          | T50.903            | T50.904                 | —              | —            |
| pesticides — see Pesticides                      |                                       |                                  |                    |                         |                |              |
| specified content — see specific substance       |                                       |                                  |                    |                         |                |              |
| <b>Spurge flax</b>                               | T62.2X1                               | T62.2X2                          | T62.2X3            | T62.2X4                 | —              | —            |
| <b>Spurges</b>                                   | T62.2X1                               | T62.2X2                          | T62.2X3            | T62.2X4                 | —              | —            |
| <b>Sputum viscosity-lowering drug</b>            | T48.4X1                               | T48.4X2                          | T48.4X3            | T48.4X4                 | T48.4X5        | T48.4X6      |
| <b>Squill</b>                                    | T46.0X1                               | T46.0X2                          | T46.0X3            | T46.0X4                 | T46.0X5        | T46.0X6      |
| rat poison                                       | T60.4X1                               | T60.4X2                          | T60.4X3            | T60.4X4                 | —              | —            |
| <b>Squirting cucumber (cathartic)</b>            | T47.2X1                               | T47.2X2                          | T47.2X3            | T47.2X4                 | T47.2X5        | T47.2X6      |
| <b>Stains</b>                                    | T65.6X1                               | T65.6X2                          | T65.6X3            | T65.6X4                 | —              | —            |
| <b>Stannous fluoride</b>                         | T49.7X1                               | T49.7X2                          | T49.7X3            | T49.7X4                 | T49.7X5        | T49.7X6      |
| <b>Stanolone</b>                                 | T38.7X1                               | T38.7X2                          | T38.7X3            | T38.7X4                 | T38.7X5        | T38.7X6      |
| <b>Stanozolol</b>                                | T38.7X1                               | T38.7X2                          | T38.7X3            | T38.7X4                 | T38.7X5        | T38.7X6      |
| <b>Staphisagria or stavesacre (pediculicide)</b> | T49.0X1                               | T49.0X2                          | T49.0X3            | T49.0X4                 | T49.0X5        | T49.0X6      |
| <b>Starch</b>                                    | T50.901                               | T50.902                          | T50.903            | T50.904                 | T50.905        | T50.906      |
| <b>Stelazine</b>                                 | T43.3X1                               | T43.3X2                          | T43.3X3            | T43.3X4                 | T43.3X5        | T43.3X6      |
| <b>Stemetil</b>                                  | T43.3X1                               | T43.3X2                          | T43.3X3            | T43.3X4                 | T43.3X5        | T43.3X6      |
| <b>Stenopronin</b>                               | T48.4X1                               | T48.4X2                          | T48.4X3            | T48.4X4                 | T48.4X5        | T48.4X6      |
| <b>Sterculia</b>                                 | T47.4X1                               | T47.4X2                          | T47.4X3            | T47.4X4                 | T47.4X5        | T47.4X6      |
| <b>Sternutator gas</b>                           | T59.891                               | T59.892                          | T59.893            | T59.894                 | —              | —            |
| <b>Steroid</b>                                   | T38.0X1                               | T38.0X2                          | T38.0X3            | T38.0X4                 | T38.0X5        | T38.0X6      |
| anabolic   | T38.7X1                               | T38.7X2                          | T38.7X3            | T38.7X4                 | T38.7X5        | T38.7X6      |
| androgenic                                       | T38.7X1                               | T38.7X2                          | T38.7X3            | T38.7X4                 | T38.7X5        | T38.7X6      |
| antineoplastic, hormone                          | T38.7X1                               | T38.7X2                          | T38.7X3            | T38.7X4                 | T38.7X5        | T38.7X6      |
| estrogen   | T38.5X1                               | T38.5X2                          | T38.5X3            | T38.5X4                 | T38.5X5        | T38.5X6      |
| ENT agent  | T49.6X1                               | T49.6X2                          | T49.6X3            | T49.6X4                 | T49.6X5        | T49.6X6      |
| ophthalmic preparation                           | T49.5X1                               | T49.5X2                          | T49.5X3            | T49.5X4                 | T49.5X5        | T49.5X6      |
| topical NEC                                      | T49.0X1                               | T49.0X2                          | T49.0X3            | T49.0X4                 | T49.0X5        | T49.0X6      |
| <b>Stibine</b>                                   | T56.891                               | T56.892                          | T56.893            | T56.894                 | —              | —            |
| <b>Stibogluconate</b>                            | T37.3X1                               | T37.3X2                          | T37.3X3            | T37.3X4                 | T37.3X5        | T37.3X6      |
| <b>Stibophen</b>                                 | T37.4X1                               | T37.4X2                          | T37.4X3            | T37.4X4                 | T37.4X5        | T37.4X6      |
| <b>Stilbamidine (isetionate)</b>                 | T37.3X1                               | T37.3X2                          | T37.3X3            | T37.3X4                 | T37.3X5        | T37.3X6      |
| <b>Stilbestrol</b>                               | T38.5X1                               | T38.5X2                          | T38.5X3            | T38.5X4                 | T38.5X5        | T38.5X6      |
| <b>Stilboestrol</b>                              | T38.5X1                               | T38.5X2                          | T38.5X3            | T38.5X4                 | T38.5X5        | T38.5X6      |
| <b>Stimulant</b>                                 |                                       |                                  |                    |                         |                |              |
| central nervous system — see                     | T43.601                               | T43.602                          | T43.603            | T43.604                 | T43.605        | T43.606      |
| also Psychostimulant                             |                                       |                                  |                    |                         |                |              |
| analeptics                                       | T50.7X1                               | T50.7X2                          | T50.7X3            | T50.7X4                 | T50.7X5        | T50.7X6      |
| opiate antagonist                                | T50.7X1                               | T50.7X2                          | T50.7X3            | T50.7X4                 | T50.7X5        | T50.7X6      |
| psychotherapeutic NEC — see                      | T43.601                               | T43.602                          | T43.603            | T43.604                 | T43.605        | T43.606      |
| also Psychotherapeutic drug                      |                                       |                                  |                    |                         |                |              |
| specified NEC                                    | T43.691                               | T43.692                          | T43.693            | T43.694                 | T43.695        | T43.696      |
| respiratory                                      | T48.901                               | T48.902                          | T48.903            | T48.904                 | T48.905        | T48.906      |
| <b>Stone-dissolving drug</b>                     | T50.901                               | T50.902                          | T50.903            | T50.904                 | T50.905        | T50.906      |
| <b>Storage battery (cells) (acid)</b>            | T54.2X1                               | T54.2X2                          | T54.2X3            | T54.2X4                 | —              | —            |
| <b>Stovaine</b>                                  | T41.3X1                               | T41.3X2                          | T41.3X3            | T41.3X4                 | T41.3X5        | T41.3X6      |
| infiltration (subcutaneous)                      | T41.3X1                               | T41.3X2                          | T41.3X3            | T41.3X4                 | T41.3X5        | T41.3X6      |
| nerve block (peripheral)                         | T41.3X1                               | T41.3X2                          | T41.3X3            | T41.3X4                 | T41.3X5        | T41.3X6      |
| (plexus)   |                                       |                                  |                    |                         |                |              |
| spinal   | T41.3X1                               | T41.3X2                          | T41.3X3            | T41.3X4                 | T41.3X5        | T41.3X6      |
| topical (surface)                                | T41.3X1                               | T41.3X2                          | T41.3X3            | T41.3X4                 | T41.3X5        | T41.3X6      |
| <b>Stovarsal</b>                                 | T37.8X1                               | T37.8X2                          | T37.8X3            | T37.8X4                 | T37.8X5        | T37.8X6      |
| <b>Stove gas — see Gas, stove</b>                |                                       |                                  |                    |                         |                |              |
| <b>Stoxil</b>                                    | T49.5X1                               | T49.5X2                          | T49.5X3            | T49.5X4                 | T49.5X5        | T49.5X6      |
| <b>Stramonium</b>                                | T48.6X1                               | T48.6X2                          | T48.6X3            | T48.6X4                 | T48.6X5        | T48.6X6      |
| natural state                                    | T62.2X1                               | T62.2X2                          | T62.2X3            | T62.2X4                 | —              | —            |
| <b>Streptodornase</b>                            | T45.3X1                               | T45.3X2                          | T45.3X3            | T45.3X4                 | T45.3X5        | T45.3X6      |
| <b>Streptoduocin</b>                             | T36.5X1                               | T36.5X2                          | T36.5X3            | T36.5X4                 | T36.5X5        | T36.5X6      |
| <b>Streptokinase</b>                             | T45.611                               | T45.612                          | T45.613            | T45.614                 | T45.615        | T45.616      |
| <b>Streptomycin (derivative)</b>                 | T36.5X1                               | T36.5X2                          | T36.5X3            | T36.5X4                 | T36.5X5        | T36.5X6      |
| <b>Streptonivacin</b>                            | T36.5X1                               | T36.5X2                          | T36.5X3            | T36.5X4                 | T36.5X5        | T36.5X6      |
| <b>Streptovarycin</b>                            | T36.5X1                               | T36.5X2                          | T36.5X3            | T36.5X4                 | T36.5X5        | T36.5X6      |
| <b>Streptozocin</b>                              | T45.1X1                               | T45.1X2                          | T45.1X3            | T45.1X4                 | T45.1X5        | T45.1X6      |
| <b>Streptozotocin</b>                            | T45.1X1                               | T45.1X2                          | T45.1X3            | T45.1X4                 | T45.1X5        | T45.1X6      |
| <b>Stripper (paint) (solvent)</b>                | T52.8X1                               | T52.8X2                          | T52.8X3            | T52.8X4                 | —              | —            |
| <b>Strobane</b>                                  | T60.1X1                               | T60.1X2                          | T60.1X3            | T60.1X4                 | —              | —            |
| <b>Strofantin</b>                                | T46.0X1                               | T46.0X2                          | T46.0X3            | T46.0X4                 | T46.0X5        | T46.0X6      |
| <b>Strophanthin (g) (k)</b>                      | T46.0X1                               | T46.0X2                          | T46.0X3            | T46.0X4                 | T46.0X5        | T46.0X6      |
| <b>Strophanthus</b>                              | T46.0X1                               | T46.0X2                          | T46.0X3            | T46.0X4                 | T46.0X5        | T46.0X6      |
| <b>Strophantin</b>                               | T46.0X1                               | T46.0X2                          | T46.0X3            | T46.0X4                 | T46.0X5        | T4           |



## Chapter 9. Diseases of the Circulatory System (I00–I99)

### Chapter-specific Guidelines with Coding Examples

The chapter-specific guidelines from the ICD-10-CM Official Guidelines for Coding and Reporting have been provided below. Along with these guidelines are coding examples, contained in the shaded boxes, that have been developed to help illustrate the coding and/or sequencing guidance found in these guidelines.

#### a. Hypertension

The classification presumes a causal relationship between hypertension and heart involvement and between hypertension and kidney involvement, as the two conditions are linked by the term “with” in the Alphabetic Index. These conditions should be coded as related even in the absence of provider documentation explicitly linking them, unless the documentation clearly states the conditions are unrelated.

For hypertension and conditions not specifically linked by relational terms such as “with,” “associated with” or “due to” in the classification, provider documentation must link the conditions in order to code them as related.

##### 1) Hypertension with heart disease

Hypertension with heart conditions classified to I50.- or I51.4–I51.7, I51.89, I51.9, are assigned to a code from category I11, Hypertensive heart disease. Use additional code(s) from category I50, Heart failure, to identify the type(s) of heart failure in those patients with heart failure.

The same heart conditions (I50.-, I51.4–I51.7, I51.89, I51.9) with hypertension are coded separately if the provider has documented they are unrelated to the hypertension. Sequence according to the circumstances of the admission/encounter.

Patient is admitted in left heart failure. Patient also has a history of hypertension managed by medication.

**I11.0 Hypertensive heart disease with heart failure**

**I50.1 Left ventricular failure, unspecified**

*Explanation:* Without a diagnostic statement to the contrary, hypertension and heart failure have an assumed causal relationship, and a combination code should be used. An additional code to identify the type of heart failure (I50.-) should also be provided.

##### 2) Hypertensive chronic kidney disease

Assign codes from category I12, Hypertensive chronic kidney disease, when both hypertension and a condition classifiable to category N18, Chronic kidney disease (CKD), are present. CKD should not be coded as hypertensive if the provider indicates the CKD is not related to the hypertension.

The appropriate code from category N18 should be used as a secondary code with a code from category I12 to identify the stage of chronic kidney disease.

See Section I.C.14. Chronic kidney disease.

If a patient has hypertensive chronic kidney disease and acute renal failure, an additional code for the acute renal failure is required.

Patient is admitted with stage IV chronic kidney disease (CKD) due to polycystic kidney disease. Patient also is on lisinopril for hypertension.

**N18.4 Chronic kidney disease, stage 4 (severe)**

**Q61.3 Polycystic kidney, unspecified**

**I10 Essential (primary) hypertension**

*Explanation:* A combination code describing a relationship between hypertension and CKD is not used because the physician documentation identifies the polycystic kidney disease as the cause for the CKD.

##### 3) Hypertensive heart and chronic kidney disease

Assign codes from combination category I13, Hypertensive heart and chronic kidney disease, when there is hypertension with both heart and kidney involvement. If heart failure is present, assign an additional code from category I50 to identify the type of heart failure.

The appropriate code from category N18, Chronic kidney disease, should be used as a secondary code with a code from category I13 to identify the stage of chronic kidney disease.

See Section I.C.14. Chronic kidney disease.

The codes in category I13, Hypertensive heart and chronic kidney disease, are combination codes that include hypertension, heart disease and chronic kidney disease. The Includes note at I13 specifies that the conditions included at I11 and I12 are included together in I13. If a patient

has hypertension, heart disease and chronic kidney disease, then a code from I13 should be used, not individual codes for hypertension, heart disease and chronic kidney disease, or codes from I11 or I12.

For patients with both acute renal failure and chronic kidney disease, an additional code for acute renal failure is required.

Hypertensive heart and kidney disease with congestive heart failure and stage 2 chronic kidney disease

**I13.0 Hypertensive heart and chronic kidney disease with heart failure and stage 1 through stage 4 chronic kidney disease, or unspecified chronic kidney disease**

**I50.9 Heart failure, unspecified**

**N18.2 Chronic kidney disease, stage 2 (mild)**

*Explanation:* Combination codes in category I13 are used to report conditions classifiable to both categories I11 and I12. Do not report conditions classifiable to I11 and I12 separately. Use additional codes to report type of heart failure and stage of CKD.

##### 4) Hypertensive cerebrovascular disease

For hypertensive cerebrovascular disease, first assign the appropriate code from categories I60–I69, followed by the appropriate hypertension code.

##### 5) Hypertensive retinopathy

Subcategory H35.0, Background retinopathy and retinal vascular changes, should be used with a code from category I10–I15, Hypertensive disease to include the systemic hypertension. The sequencing is based on the reason for the encounter.

Hypertensive retinopathy of the right eye

**H35.031 Hypertensive retinopathy, right eye**

**I10 Essential (primary) hypertension**

*Explanation:* Hypertensive retinopathy requires two codes: the appropriate subcategory H35.0 code and a code for the hypertension.

##### 6) Hypertension, secondary

Secondary hypertension is due to an underlying condition. Two codes are required: one to identify the underlying etiology and one from category I15 to identify the hypertension. Sequencing of codes is determined by the reason for admission/encounter.

Renovascular hypertension due to renal artery atherosclerosis

**I15.0 Renovascular hypertension**

**I70.1 Atherosclerosis of renal artery**

*Explanation:* Secondary hypertension requires two codes: a code to identify the etiology and the appropriate I15 code.

##### 7) Hypertension, transient

Assign code R03.0, Elevated blood pressure reading without diagnosis of hypertension, unless patient has an established diagnosis of hypertension. Assign code O13.-, Gestational [pregnancy-induced] hypertension without significant proteinuria, or O14.-, Pre-eclampsia, for transient hypertension of pregnancy.

##### 8) Hypertension, controlled

This diagnostic statement usually refers to an existing state of hypertension under control by therapy. Assign the appropriate code from categories I10–I15, Hypertensive diseases.

##### 9) Hypertension, uncontrolled

Uncontrolled hypertension may refer to untreated hypertension or hypertension not responding to current therapeutic regimen. In either case, assign the appropriate code from categories I10–I15, Hypertensive diseases.

##### 10) Hypertensive crisis

Assign a code from category I16, Hypertensive crisis, for documented hypertensive urgency, hypertensive emergency or unspecified hypertensive crisis. Code also any identified hypertensive disease (I10–I15). The sequencing is based on the reason for the encounter.

##### 11) Pulmonary hypertension

Pulmonary hypertension is classified to category I27, Other pulmonary heart diseases. For secondary pulmonary hypertension (I27.1, I27.2-), code also any associated conditions or adverse effects of drugs or toxins.

- ✓ 5th** **I60.3** Nontraumatic subarachnoid hemorrhage from **posterior communicating artery** **RIC CC**
- I60.30** Nontraumatic subarachnoid hemorrhage from unspecified posterior communicating artery **RIC CC**  
**RIC Excl:** 01 Stroke; 02 Traumatic brain injury; 03 Non-traumatic brain injury
- I60.31** Nontraumatic subarachnoid hemorrhage from **right posterior communicating artery** **RIC CC**  
**RIC Excl:** 01 Stroke; 02 Traumatic brain injury; 03 Non-traumatic brain injury
- I60.32** Nontraumatic subarachnoid hemorrhage from **left posterior communicating artery** **RIC CC**  
**RIC Excl:** 01 Stroke; 02 Traumatic brain injury; 03 Non-traumatic brain injury
- I60.4** Nontraumatic subarachnoid hemorrhage from **basilar artery** **RIC CC**  
**RIC Excl:** 01 Stroke; 02 Traumatic brain injury; 03 Non-traumatic brain injury
- ✓ 5th** **I60.5** Nontraumatic subarachnoid hemorrhage from **vertebral artery** **RIC CC**
- I60.50** Nontraumatic subarachnoid hemorrhage from unspecified vertebral artery **RIC CC**  
**RIC Excl:** 01 Stroke; 02 Traumatic brain injury; 03 Non-traumatic brain injury
- I60.51** Nontraumatic subarachnoid hemorrhage from **right vertebral artery** **RIC CC**  
**RIC Excl:** 01 Stroke; 02 Traumatic brain injury; 03 Non-traumatic brain injury
- I60.52** Nontraumatic subarachnoid hemorrhage from **left vertebral artery** **RIC CC**  
**RIC Excl:** 01 Stroke; 02 Traumatic brain injury; 03 Non-traumatic brain injury
- I60.6** Nontraumatic subarachnoid hemorrhage from **other intracranial arteries** **RIC CC**  
**RIC Excl:** 01 Stroke; 02 Traumatic brain injury; 03 Non-traumatic brain injury
- I60.7** Nontraumatic subarachnoid hemorrhage from **unspecified intracranial artery** **RIC CC**  
 Ruptured (congenital) berry aneurysm  
 Ruptured (congenital) cerebral aneurysm  
 Subarachnoid hemorrhage (nontraumatic) from cerebral artery NOS  
 Subarachnoid hemorrhage (nontraumatic) from communicating artery NOS  
**EXCLUDES 1** berry aneurysm, nonruptured (I67.1)  
**RIC Excl:** 01 Stroke; 02 Traumatic brain injury; 03 Non-traumatic brain injury
- I60.8** Other nontraumatic subarachnoid hemorrhage **RIC CC**  
 Meningeal hemorrhage  
 Rupture of cerebral arteriovenous malformation  
**RIC Excl:** 01 Stroke; 02 Traumatic brain injury; 03 Non-traumatic brain injury
- I60.9** Nontraumatic subarachnoid hemorrhage, **unspecified** **RIC CC**  
**RIC Excl:** 01 Stroke; 02 Traumatic brain injury; 03 Non-traumatic brain injury
- ✓ 4th** **I61** Nontraumatic intracerebral hemorrhage **RIC CC**  
**EXCLUDES 2** sequelae of intracerebral hemorrhage (I69.1-)  
**AHA:** 2017,2Q,9-10
- I61.0** Nontraumatic intracerebral hemorrhage in **hemisphere, subcortical** **RIC CC**  
 Deep intracerebral hemorrhage (nontraumatic)  
**AHA:** 2016,4Q,27  
**RIC Excl:** 01 Stroke; 02 Traumatic brain injury; 03 Non-traumatic brain injury
- I61.1** Nontraumatic intracerebral hemorrhage in **hemisphere, cortical** **RIC CC**  
 Cerebral lobe hemorrhage (nontraumatic)  
 Superficial intracerebral hemorrhage (nontraumatic)  
**RIC Excl:** 01 Stroke; 02 Traumatic brain injury; 03 Non-traumatic brain injury
- I61.2** Nontraumatic intracerebral hemorrhage in **hemisphere, unspecified** **RIC CC**  
**RIC Excl:** 01 Stroke; 02 Traumatic brain injury; 03 Non-traumatic brain injury

- I61.3** Nontraumatic intracerebral hemorrhage in **brain stem** **RIC CC**  
**RIC Excl:** 01 Stroke; 02 Traumatic brain injury; 03 Non-traumatic brain injury
- I61.4** Nontraumatic intracerebral hemorrhage in **cerebellum** **RIC CC**  
**RIC Excl:** 01 Stroke; 02 Traumatic brain injury; 03 Non-traumatic brain injury
- I61.5** Nontraumatic intracerebral hemorrhage, **intraventricular** **RIC CC**  
**RIC Excl:** 01 Stroke; 02 Traumatic brain injury; 03 Non-traumatic brain injury
- I61.6** Nontraumatic intracerebral hemorrhage, **multiple localized** **RIC CC**  
**RIC Excl:** 01 Stroke; 02 Traumatic brain injury; 03 Non-traumatic brain injury
- I61.8** Other nontraumatic intracerebral hemorrhage **RIC CC**  
**RIC Excl:** 01 Stroke; 02 Traumatic brain injury; 03 Non-traumatic brain injury
- I61.9** Nontraumatic intracerebral hemorrhage, **unspecified** **RIC CC**  
**RIC Excl:** 01 Stroke; 02 Traumatic brain injury; 03 Non-traumatic brain injury
- ✓ 4th** **I62** Other and unspecified **nontraumatic intracranial hemorrhage** **RIC CC**  
**EXCLUDES 2** sequelae of intracranial hemorrhage (I69.2)
- ✓ 5th** **I62.0** Nontraumatic **subdural** hemorrhage **RIC CC**
- I62.00** Nontraumatic subdural hemorrhage, **unspecified** **RIC CC**  
**RIC Excl:** 01 Stroke; 02 Traumatic brain injury; 03 Non-traumatic brain injury
- I62.01** Nontraumatic **acute** subdural hemorrhage **RIC CC**  
**RIC Excl:** 01 Stroke; 02 Traumatic brain injury; 03 Non-traumatic brain injury
- I62.02** Nontraumatic **subacute** subdural hemorrhage **RIC CC**  
**RIC Excl:** 01 Stroke; 02 Traumatic brain injury; 03 Non-traumatic brain injury
- I62.03** Nontraumatic **chronic** subdural hemorrhage **RIC CC**  
**RIC Excl:** 01 Stroke; 02 Traumatic brain injury; 03 Non-traumatic brain injury
- I62.1** Nontraumatic **extradural** hemorrhage **RIC CC**  
 Nontraumatic epidural hemorrhage  
**RIC Excl:** 01 Stroke; 02 Traumatic brain injury; 03 Non-traumatic brain injury
- I62.9** Nontraumatic intracranial hemorrhage, **unspecified** **RIC**
- ✓ 4th** **I63** Cerebral infarction **RIC CC**  
**INCLUDES** occlusion and stenosis of cerebral and precerebral arteries, resulting in cerebral infarction  
 Use additional code, if applicable, to identify status post administration of tPA (rtPA) in a different facility within the last 24 hours prior to admission to current facility (Z92.82)  
 Use additional code, if known, to indicate National Institutes of Health Stroke Scale (NIHSS) score (R29.7-)  
**EXCLUDES 2** sequelae of cerebral infarction (I69.3-)  
**AHA:** 2017,2Q,9-10; 2016,4Q,28,61-62; 2014,1Q,23
- ✓ 5th** **I63.0** Cerebral infarction due to **thrombosis of precerebral arteries** **RIC CC**
- I63.00** Cerebral infarction due to thrombosis of **unspecified precerebral artery** **RIC CC**  
**RIC Excl:** 01 Stroke
- ✓ 6th** **I63.01** Cerebral infarction due to thrombosis of **vertebral artery** **RIC CC**
- I63.011** Cerebral infarction due to thrombosis of **right vertebral artery** **RIC CC**  
**RIC Excl:** 01 Stroke
- I63.012** Cerebral infarction due to thrombosis of **left vertebral artery** **RIC CC**  
**RIC Excl:** 01 Stroke
- I63.013** Cerebral infarction due to thrombosis of **bilateral vertebral arteries** **RIC CC**  
**RIC Excl:** 01 Stroke

✓4<sup>th</sup> M71 Other bursopathies

**EXCLUDES 1** bunion (M20.1)  
bursitis related to use, overuse or pressure (M70.-)  
enthesopathies (M76–M77)

✓5<sup>th</sup> M71.0 Abscess of bursa

Use additional code (B95.-, B96.-) to identify causative organism

**M71.00** Abscess of bursa, unspecified site

✓6<sup>th</sup> M71.01 Abscess of bursa, shoulder

M71.011 Abscess of bursa, right shoulder

M71.012 Abscess of bursa, left shoulder

**M71.019** Abscess of bursa, unspecified shoulder

✓6<sup>th</sup> M71.02 Abscess of bursa, elbow

M71.021 Abscess of bursa, right elbow

M71.022 Abscess of bursa, left elbow

**M71.029** Abscess of bursa, unspecified elbow

✓6<sup>th</sup> M71.03 Abscess of bursa, wrist

M71.031 Abscess of bursa, right wrist

M71.032 Abscess of bursa, left wrist

**M71.039** Abscess of bursa, unspecified wrist

✓6<sup>th</sup> M71.04 Abscess of bursa, hand

M71.041 Abscess of bursa, right hand

M71.042 Abscess of bursa, left hand

**M71.049** Abscess of bursa, unspecified hand

✓6<sup>th</sup> M71.05 Abscess of bursa, hip

M71.051 Abscess of bursa, right hip

M71.052 Abscess of bursa, left hip

**M71.059** Abscess of bursa, unspecified hip

✓6<sup>th</sup> M71.06 Abscess of bursa, knee

M71.061 Abscess of bursa, right knee

M71.062 Abscess of bursa, left knee

**M71.069** Abscess of bursa, unspecified knee

✓6<sup>th</sup> M71.07 Abscess of bursa, ankle and foot

M71.071 Abscess of bursa, right ankle and foot

M71.072 Abscess of bursa, left ankle and foot

**M71.079** Abscess of bursa, unspecified ankle and foot

M71.08 Abscess of bursa, other site

M71.09 Abscess of bursa, multiple sites

✓5<sup>th</sup> M71.1 Other infective bursitis

Use additional code (B95.-, B96.-) to identify causative organism

**M71.10** Other infective bursitis, unspecified site

✓6<sup>th</sup> M71.11 Other infective bursitis, shoulder

M71.111 Other infective bursitis, right shoulder

M71.112 Other infective bursitis, left shoulder

**M71.119** Other infective bursitis, unspecified shoulder

✓6<sup>th</sup> M71.12 Other infective bursitis, elbow

M71.121 Other infective bursitis, right elbow

M71.122 Other infective bursitis, left elbow

**M71.129** Other infective bursitis, unspecified elbow

✓6<sup>th</sup> M71.13 Other infective bursitis, wrist

M71.131 Other infective bursitis, right wrist

M71.132 Other infective bursitis, left wrist

**M71.139** Other infective bursitis, unspecified wrist

✓6<sup>th</sup> M71.14 Other infective bursitis, hand

M71.141 Other infective bursitis, right hand

M71.142 Other infective bursitis, left hand

**M71.149** Other infective bursitis, unspecified hand

✓6<sup>th</sup> M71.15 Other infective bursitis, hip

M71.151 Other infective bursitis, right hip

M71.152 Other infective bursitis, left hip

**M71.159** Other infective bursitis, unspecified hip

✓6<sup>th</sup> M71.16 Other infective bursitis, knee

M71.161 Other infective bursitis, right knee

M71.162 Other infective bursitis, left knee

**M71.169** Other infective bursitis, unspecified knee

✓6<sup>th</sup> M71.17 Other infective bursitis, ankle and foot

M71.171 Other infective bursitis, right ankle and foot

M71.172 Other infective bursitis, left ankle and foot

**M71.179** Other infective bursitis, unspecified ankle and foot

M71.18 Other infective bursitis, other site

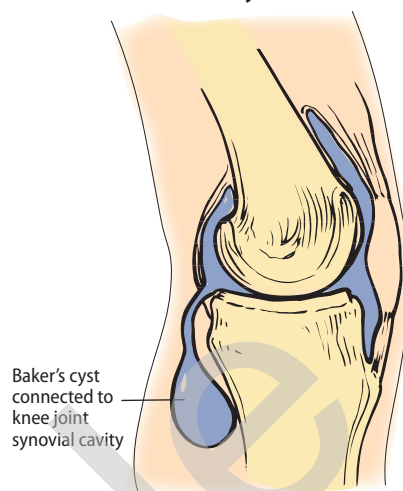
## M71.19 Other infective bursitis, multiple sites

✓5<sup>th</sup> M71.2 Synovial cyst of popliteal space [Baker]

**EXCLUDES 1** synovial cyst of popliteal space with rupture (M66.0)

**DEF:** Sac filled with clear synovial fluid in adults, usually secondary to disease inside the joint, located on the back of the knee in the popliteal fossa area. In children, the cyst usually represents a ganglion of one of the tendons in the knee.

Baker's Cyst



**M71.20** Synovial cyst of popliteal space [Baker], unspecified knee

**M71.21** Synovial cyst of popliteal space [Baker], right knee

**M71.22** Synovial cyst of popliteal space [Baker], left knee

✓5<sup>th</sup> M71.3 Other bursal cyst

Synovial cyst NOS

**EXCLUDES 1** synovial cyst with rupture (M66.1-)

**M71.30** Other bursal cyst, unspecified site

✓6<sup>th</sup> M71.31 Other bursal cyst, shoulder

M71.311 Other bursal cyst, right shoulder

M71.312 Other bursal cyst, left shoulder

**M71.319** Other bursal cyst, unspecified shoulder

✓6<sup>th</sup> M71.32 Other bursal cyst, elbow

M71.321 Other bursal cyst, right elbow

M71.322 Other bursal cyst, left elbow

**M71.329** Other bursal cyst, unspecified elbow

✓6<sup>th</sup> M71.33 Other bursal cyst, wrist

M71.331 Other bursal cyst, right wrist

M71.332 Other bursal cyst, left wrist

**M71.339** Other bursal cyst, unspecified wrist

✓6<sup>th</sup> M71.34 Other bursal cyst, hand

M71.341 Other bursal cyst, right hand

M71.342 Other bursal cyst, left hand

**M71.349** Other bursal cyst, unspecified hand

✓6<sup>th</sup> M71.35 Other bursal cyst, hip

M71.351 Other bursal cyst, right hip

M71.352 Other bursal cyst, left hip

**M71.359** Other bursal cyst, unspecified hip

✓6<sup>th</sup> M71.37 Other bursal cyst, ankle and foot

M71.371 Other bursal cyst, right ankle and foot

M71.372 Other bursal cyst, left ankle and foot

**M71.379** Other bursal cyst, unspecified ankle and foot

M71.38 Other bursal cyst, other site

M71.39 Other bursal cyst, multiple sites

✓5<sup>th</sup> M71.4 Calcium deposit in bursa

**EXCLUDES 2** calcium deposit in bursa of shoulder (M75.3)

**M71.40** Calcium deposit in bursa, unspecified site

✓6<sup>th</sup> M71.42 Calcium deposit in bursa, elbow

M71.421 Calcium deposit in bursa, right elbow

M71.422 Calcium deposit in bursa, left elbow

**M71.429** Calcium deposit in bursa, unspecified elbow

✓6<sup>th</sup> M71.43 Calcium deposit in bursa, wrist

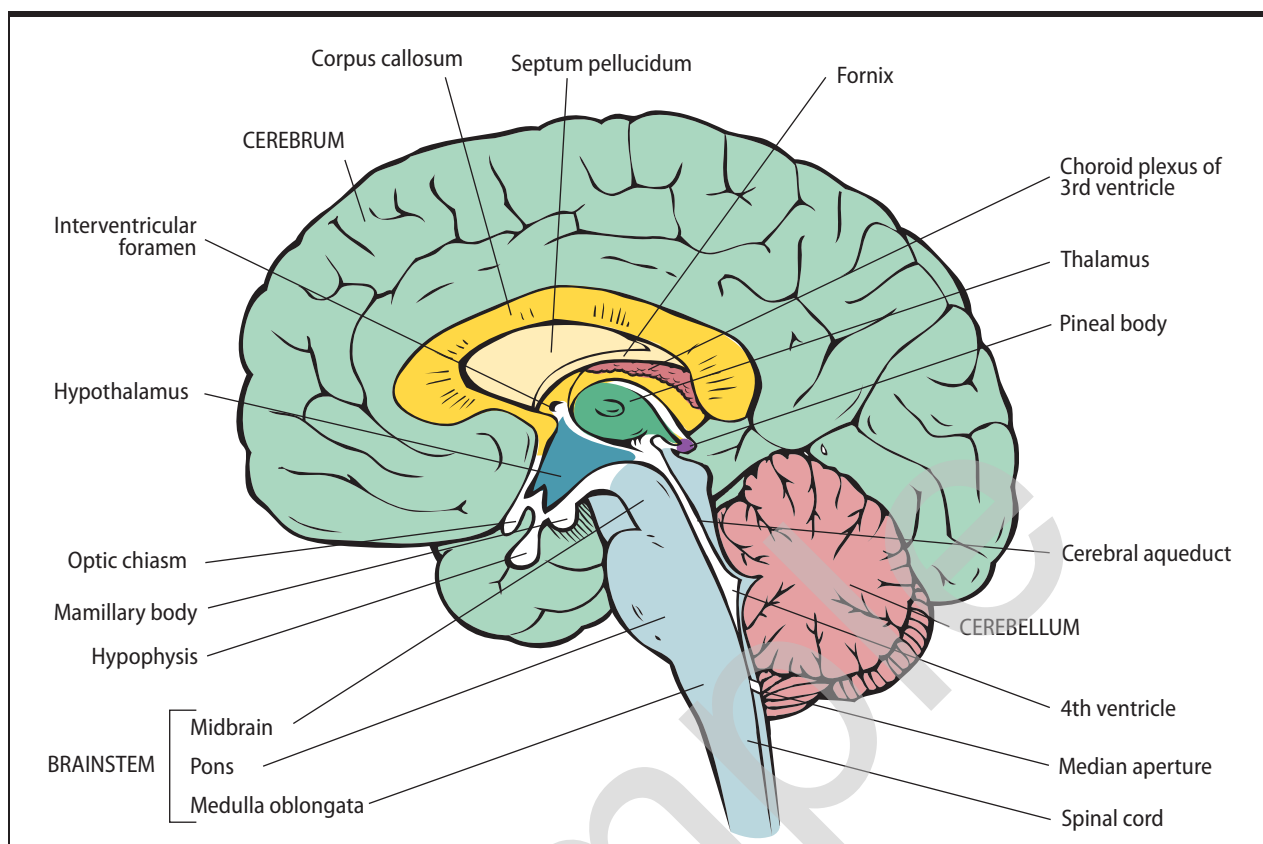
**M71.431** Calcium deposit in bursa, right wrist

| Drug  | Z Code  | Drug Action/Classification   | Indications  |
|---|---------|--|--|
| Duavee [bazedoxifene acetate/conjugated estrogens]    | Z79.890 | Estrogen therapy   | Menopause symptoms; osteoporosis prevention  |
| Duetact [glimepiride/pioglitazone hydrochloride]      | Z79.84  | Oral hypoglycemic  | Diabetes mellitus  |
| Duexis [famotidine/ibuprofen]                         | Z79.1   | Nonsteroidal anti-inflammatory drug (NSAID)                              | Symptomatic treatment of osteoarthritis and rheumatoid arthritis; reduce risk of ulcers  |
| Dulera [formoterol fumarate/mometasone furoate]       | Z79.51  | Corticosteroid -inhaled; antiasthmatic                                   | Prophylaxis and treatment of asthma  |
| Duragesic [fentanyl]                                  | Z79.891 | Analgesic, narcotic  | Chronic pain   |
| Duramorph PF [morphine sulfate]                       | Z79.891 | Analgesic, narcotic  | Moderate to severe pain  |
| Durlaza [aspirin]                                     | Z79.82  | Aspirin  | Prevention of heart attack, stroke, angina   |
| Dynacin [minocycline hydrochloride]                   | Z79.2   | Antibiotic   | Severe acne treatment  |
| E.E.S. [erythromycin ethylsuccinate]                  | Z79.2   | Antibiotic   | Bacterial infections   |
| Effexor XR [venlafaxine hydrochloride]                |         | Antidepressant, serotonin and norepinephrine reuptake inhibitors (SNRIs) | Major depressive disorder; social anxiety disorder; panic disorder   |
| Effient [prasugrel hydrochloride]                     | Z79.02  | Antiplatelet   | Lessening of the chance of heart attack or stroke  |
| Elestrin [estradiol]                                  | Z79.890 | Estrogen therapy   | Menopause symptoms   |
| Eligard [leuprolide acetate]                          | Z79.818 | Agents affecting estrogen receptors and estrogen levels                  | Palliative treatment of prostate cancer symptoms   |
| Elinest [norgestrel/ethinyl estradiol]                | Z79.3   | Contraceptive  | Prevention of pregnancy  |
| Eliquis [apixaban]                                    | Z79.01  | Anticoagulant  | Venous thrombosis  |
| Embeda [morphine sulfate/naltrexone hydrochloride]    | Z79.891 | Analgesic, narcotic  | Moderate to severe pain  |
| Emoquette [ethinyl estradiol/desogestrel]             | Z79.3   | Contraceptive  | Prevention of pregnancy  |
| Emtriva [emtricitabine]                               | Z79.899 | Antiretroviral   | HIV  |
| Enbrel [etanercept]                                   | Z79.899 | Antirheumatic  | Rheumatoid arthritis; polyarticular juvenile idiopathic arthritis; psoriatic arthritis; ankylosing spondylitis, plaque psoriasis |
| Enpresse-28 [ethinyl estradiol/levonorgestrel]        | Z79.3   | Contraceptive  | Prevention of pregnancy  |
| Enskyce [desogestrel/ethinyl estradiol]               | Z79.3   | Contraceptive  | Prevention of pregnancy  |
| Entocort EC [budesonide]                              | Z79.52  | Corticosteroid   | Crohn's disease; ulcerative colitis  |
| Entresto [sacubitril/valsartan]                       |         | Angiotensin II receptor blocker; neprilysin inhibitor                    | Chronic heart failure  |
| Entyvio [vedolizumab]                                 | Z79.899 | Immunosuppressant  | Ulcerative colitis; Crohn's disease  |
| Envarsus XR [tacrolimus]                              | Z79.899 | Immunosuppressant  | Prophylaxis of organ transplant rejection  |
| Epinephrine [epinephrine]                             |         | Bronchodilator, cardiotonic  | Most commonly, relief of distress due to bronchospasm and restoration of cardiac rhythm in cardiac arrest                        |
| Epivir, Epivir-HBV [lamivudine]                       | Z79.899 | Antiretroviral   | HIV, hepatitis B (HBV), asymptomatic HIV   |
| Erelzi [etanercept-szsz]                              | Z79.899 | Antirheumatic  | Rheumatoid arthritis; polyarticular juvenile idiopathic arthritis; psoriatic arthritis; ankylosing spondylitis, plaque psoriasis |
| Errin [norethindrone]                                 | Z79.3   | Contraceptive  | Prevention of pregnancy  |
| Ertapenem [ertapenem sodium]                          | Z79.2   | Antibiotic   | Stomach, urinary tract, pelvis, skin and lung infections   |
| Ery-Tab [erythromycin]                                | Z79.2   | Antibiotic   | Bacterial infections   |
| ERYC [erythromycin]                                   | Z79.2   | Antibiotic   | Respiratory tract infections   |
| Erygel [erythromycin]                                 | Z79.2   | Antibiotic, topical  | Bacterial skin infections  |
| EryPed [erythromycin ethylsuccinate]                  | Z79.2   | Antibiotic   | Bacterial infections; rheumatic fever attacks  |
| Erythrocine [erythromycin lactobionate]               | Z79.2   | Antibiotic   | Bacterial infections   |
| Erythromycin [erythromycin]                           | Z79.2   | Antibiotic   | Respiratory tract infections   |
| Estarylla [ethinyl estradiol/norgestimate]            | Z79.3   | Contraceptive  | Prevention of pregnancy  |
| Estrace [estradiol]                                   | Z79.890 | Estrogen therapy   | Vaginal cream for treatment of vaginal and vulvar atrophy  |
| EstroGel [estradiol]                                  | Z79.890 | Estrogen therapy -topical  | Menopause symptoms   |
| Eurostep Fe [ethinyl estradiol/norethindrone acetate] | Z79.3   | Contraceptive  | Prevention of pregnancy  |
| Evista [raloxifene hydrochloride]                     | Z79.810 | Selective estrogen receptor modulator (SERM)                             | Prevention of thinning of the bones (osteoporosis) only in postmenopausal women  |
| Exalgo [hydromorphone hydrochloride]                  | Z79.891 | Analgesic, narcotic  | Moderate to severe pain  |
| Exemestane [exemestane]                               | Z79.811 | Aromatase inhibitor  | Postmenopausal breast cancer   |
| Factive [gemifloxacin mesylate]                       | Z79.2   | Antibiotic   | Bacterial lung infections  |
| Falmina [ethinyl estradiol/levonorgestrel]            | Z79.3   | Contraceptive  | Prevention of pregnancy  |



## Chapter 6. Diseases of the Nervous System (G00–G99)

### Brain



### Cranial Nerves

