

# ICD-10-CM Professional for Hospitals

**The complete official code set**

Codes valid from October 1, 2023  
through September 30, 2024

**2024**

[optumcoding.com](https://www.optumcoding.com)



# Contents

## How to Use ICD-10-CM Professional for Hospitals 2024 ..... iii

Introduction .....	iii
What's New for 2024 .....	iii
10 Steps to Correct Coding.....	iii
Official ICD-10-CM Guidelines for Coding and Reporting.....	iii
Indexes .....	iii
Index to Diseases and Injuries .....	iii
Neoplasm Table .....	iii
Table of Drugs and Chemicals .....	iii
External Causes Index .....	iii
Index Notations .....	iv
Tabular List of Diseases .....	v
Code and Code Descriptions .....	v
Tabular Notations .....	v
Official Notations .....	v
Optum Notations .....	vi
Icons .....	vi
Color Bars .....	viii
Footnotes.....	viii
Chapter-Level Notations .....	viii
Illustrations .....	viii

## What's New for 2024 ..... ix

Official Updates .....	ix
Proprietary Updates .....	xi

## Conversion Table of ICD-10-CM Codes ..... xiii

## 10 Steps to Correct Coding ..... xvii

## ICD-10-CM Official Guidelines for Coding and Reporting ..... Coding Guidelines-1

## ICD-10-CM Index to Diseases and Injuries ..... 1

## ICD-10-CM Neoplasm Table ..... 342

## ICD-10-CM Table of Drugs and Chemicals ..... 361

## ICD-10-CM Index to External Causes..... 411

## ICD-10-CM Tabular List of Diseases and Injuries ..... 447

Chapter 1. Certain Infectious and Parasitic Diseases (A00-B99) .....	447
Chapter 2. Neoplasms (C00-D49) .....	473
Chapter 3. Diseases of the Blood and Blood-forming Organs and Certain Disorders Involving the Immune Mechanism (D50-D89) .....	513
Chapter 4. Endocrine, Nutritional and Metabolic Diseases (E00-E89) .....	527
Chapter 5. Mental, Behavioral, and Neurodevelopmental Disorders (F01-F99) .....	551
Chapter 6. Diseases of the Nervous System (G00-G99) .....	583
Chapter 7. Diseases of the Eye and Adnexa (H00-H59) .....	607

Chapter 8. Diseases of the Ear and Mastoid Process (H60-H95) .....	645
Chapter 9. Diseases of the Circulatory System (I00-I99) .....	657
Chapter 10. Diseases of the Respiratory System (J00-J99) .....	703
Chapter 11. Diseases of the Digestive System (K00-K95) .....	721
Chapter 12. Diseases of the Skin and Subcutaneous Tissue (L00-L99) .....	747
Chapter 13. Diseases of the Musculoskeletal System and Connective Tissue (M00-M99) .....	769
Chapter 14. Diseases of the Genitourinary System (N00-N99) .....	859
Chapter 15. Pregnancy, Childbirth and the Puerperium (O00-O9A) .....	881
Chapter 16. Certain Conditions Originating in the Perinatal Period (P00-P96) .....	921
Chapter 17. Congenital Malformations, Deformations and Chromosomal Abnormalities (Q00-Q99) .....	935
Chapter 18. Symptoms, Signs and Abnormal Clinical and Laboratory Findings (R00-R99) .....	955
Chapter 19. Injury, Poisoning and Certain Other Consequences of External Causes (S00-I88) .....	977
Chapter 20. External Causes of Morbidity (V00-Y99).....	1187
Chapter 21. Factors Influencing Health Status and Contact With Health Services (Z00-Z99) .....	1255
Chapter 22. Codes for Special Purposes (U00-U85) .....	1295

## Illustrations..... Illustrations-1

Chapter 3. Diseases of the Blood and Blood-forming Organs and Certain Disorders Involving the Immune Mechanism (D50-D89) .....	Illustrations-1
Red Blood Cells .....	Illustrations-1
White Blood Cell .....	Illustrations-1
Platelet .....	Illustrations-2
Coagulation .....	Illustrations-2
Spleen Anatomical Location and External Structures .....	Illustrations-3
Spleen Interior Structures .....	Illustrations-3
Chapter 4. Endocrine, Nutritional and Metabolic Diseases (E00-E89) .....	Illustrations-4
Endocrine System .....	Illustrations-4
Thyroid .....	Illustrations-5
Thyroid and Parathyroid Glands .....	Illustrations-5
Pancreas .....	Illustrations-6
Anatomy of the Adrenal Gland .....	Illustrations-6
Structure of an Ovary .....	Illustrations-7
Testis and Associated Structures .....	Illustrations-7
Thymus .....	Illustrations-8
Chapter 6. Diseases of the Nervous System (G00-G99) .....	Illustrations-9
Brain .....	Illustrations-9
Cranial Nerves .....	Illustrations-9
Peripheral Nervous System .....	Illustrations-10
Spinal Cord and Spinal Nerves .....	Illustrations-11
Nerve Cell .....	Illustrations-12
Trigeminal and Facial Nerve Branches.....	Illustrations-12
Chapter 7. Diseases of the Eye and Adnexa (H00-H59) .....	Illustrations-13
Eye .....	Illustrations-13
Posterior Pole of Globe/Flow of Aqueous Humor .....	Illustrations-13
Lacrimal System .....	Illustrations-14

Eye Musculature .....	Illustrations–14	Nail Anatomy .....	Illustrations–31
Eyelid Structures .....	Illustrations–14	Skin and Subcutaneous Tissue .....	Illustrations–31
Chapter 8. Diseases of the Ear and Mastoid Process (H60–H95) .....	Illustrations–15	Chapter 13. Diseases of the Musculoskeletal System and Connective Tissue (M00–M99) .....	Illustrations–32
Ear Anatomy .....	Illustrations–15	Bones and Joints .....	Illustrations–32
Chapter 9. Diseases of the Circulatory System (I00–I99) .....	Illustrations–16	Shoulder Anterior View .....	Illustrations–33
Anatomy of the Heart .....	Illustrations–16	Shoulder Posterior View .....	Illustrations–33
Heart Cross Section .....	Illustrations–16	Elbow Anterior View .....	Illustrations–33
Heart Valves .....	Illustrations–17	Elbow Posterior View .....	Illustrations–33
Heart Conduction System .....	Illustrations–17	Hand .....	Illustrations–33
Coronary Arteries .....	Illustrations–18	Hip Anterior View .....	Illustrations–34
Arteries .....	Illustrations–19	Hip Posterior View .....	Illustrations–34
Veins .....	Illustrations–20	Knee Anterior View .....	Illustrations–34
Internal Carotid and Vertebral Arteries and Branches .....	Illustrations–21	Knee Posterior View .....	Illustrations–34
External Carotid Artery and Branches .....	Illustrations–21	Foot .....	Illustrations–34
Branches of Abdominal Aorta .....	Illustrations–22	Muscles.....	Illustrations–35
Portal Venous Circulation .....	Illustrations–22	Chapter 14. Diseases of the Genitourinary System (N00–N99) .....	Illustrations–36
Lymphatic System .....	Illustrations–23	Urinary System .....	Illustrations–36
Axillary Lymph Nodes .....	Illustrations–24	Male Genitourinary System .....	Illustrations–37
Lymphatic System of Head and Neck .....	Illustrations–24	Female Internal Genitalia .....	Illustrations–37
Lymphatic Capillaries .....	Illustrations–25	Female Genitourinary Tract Lateral View .....	Illustrations–37
Lymphatic Drainage .....	Illustrations–25	Chapter 15. Pregnancy, Childbirth and the Puerperium (O00–O9A) .....	Illustrations–38
Chapter 10. Diseases of the Respiratory System (J00–J99) .....	Illustrations–26	Term Pregnancy – Single Gestation .....	Illustrations–38
Respiratory System .....	Illustrations–26	Twin Gestation–Dichorionic–Diamniotic (DI-DI) .....	Illustrations–38
Upper Respiratory System .....	Illustrations–27	Twin Gestation–Monochorionic–Diamniotic (MO-DI) .....	Illustrations–39
Lower Respiratory System .....	Illustrations–27	Twin Gestation–Monochorionic–Monoamniotic (MO-MO) .....	Illustrations–39
Paranasal Sinuses .....	Illustrations–27	Chapter 19. Injury, Poisoning and Certain Other Consequences of External Causes (S00–T88) .....	Illustrations–40
Lung Segments .....	Illustrations–28	Types of Fractures .....	Illustrations–40
Alveoli .....	Illustrations–28	Salter-Harris Fracture Types .....	Illustrations–40
Chapter 11. Diseases of the Digestive System (K00–K95) .....	Illustrations–29		
Digestive System .....	Illustrations–29		
Omentum and Mesentery .....	Illustrations–30		
Peritoneum and Retroperitoneum ..	Illustrations–30		
Chapter 12. Diseases of the Skin and Subcutaneous Tissue (L00–L99) .....	Illustrations–31		

This data file can be accessed at the following:

<https://www.optumcoding.com/ProductUpdates/>  
 Title: "2023 ICD-10-CM for Hospital Edits Data File"  
 Password: Inpatient23

**Note:** The following icons are placed at the end of the code description.

### Age Edits

#### **N** Newborn Age: 0

These diagnoses are intended for newborns and neonates and the patient's age must be 0 years.

**N47.0** Adherent prepuce, newborn **N**♂

#### **P** Pediatric Age: 0-17

These diagnoses are intended for children and the patient's age must be between 0 and 17 years.

**L21.1** Seborrheic infantile dermatitis **P**

#### **M** Maternity Age: 9-64

These diagnoses are intended for childbearing patients between the age of 9 and 64 years.

**O02.9** Abnormal product of conception, unspecified **M**♀

#### **A** Adult Age: 15-124

These diagnoses are intended for patients between the age of 15 and 124 years.

**R54** Age-related physical debility **A**

Frailty  
 Old age  
 Senescence  
 Senile asthenia  
 Senile debility

**EXCLUDES1** age-related cognitive decline (R41.81)  
 sarcopenia (M62.84)  
 senile psychosis (F03)  
 senility NOS (R41.81)

### Sex Edits

#### ♂ Male diagnosis only

**Q98.0** Klinefelter syndrome karyotype 47, XXY ♂

#### ♀ Female diagnosis only

**N35.12** Postinfective urethral stricture, not elsewhere classified, female ♀

#### **H1 - H14** Hospital Acquired Condition (HAC)

These codes identify conditions that are high cost or high volume or both, are either a complication or comorbidity (CC) or major complication or comorbidity (MCC) that as a secondary diagnosis results in assignment of a case to a higher-paying MS-DRG. These conditions are reasonably preventable through the application of evidence-based guidelines. If the condition is not present on admission (meaning it developed during the hospital admission), the case will not group to the higher-paying MS-DRG based solely upon the reporting of the HAC code. Many of these HACs are conditional, and are based on reporting the specific diagnosis code(s) in combination with certain procedure codes.

**Note:** Hospital-acquired conditions do not impact MS-LTC-DRG assignment.

**N15.1** Renal and perinephric abscess **MCC** **H6**

#### **CC** CC Condition

This symbol designates a complication or comorbidity diagnosis that may affect DRG assignment. A complication or comorbidity diagnosis, CC condition, is defined as a significant acute disease, a significant acute manifestation of a chronic disease, an advanced or end-stage chronic disease, or a chronic disease associated with systemic physiological decompensation and debility that have consistently greater impact on hospital resources.

**G90.59** Complex regional pain syndrome I of other specified site **CC**

#### **MCC** MCC Condition

This symbol designates a major complication or comorbidity diagnosis that may affect DRG assignment. An MCC condition meets the same criteria as a CC condition but is associated with a higher acuity level and hospital resource consumption is expected to be higher than that for a CC condition. There are fewer conditions that meet the criteria as an MCC than those for a CC condition.

**✓7th** **S35.238** Other injury of inferior mesenteric artery **MCC**

**Note:** The assignment of an MS-DRG or MS-LTC-DRG often depends on the presence or absence of a secondary diagnosis code that is designated as an MCC or CC. However, in some instances the MCC or CC designation for that secondary diagnosis code is negated due to its relationship with the principal diagnosis; this is referred to as CC exclusion. The ICD-10 MS-DRG Definitions Manual included with the IPPS final rule provides a list of all principal diagnosis codes that would render ineffective the MCC/CC designation for a particular ICD-10-CM code when used as a secondary diagnosis. Optum has provided this CC exclusion list in an easily searchable data file, which can be accessed at the following:

<https://www.optumcoding.com/ProductUpdates/>  
 Title: "2023 ICD-10-CM for Hospitals CC Excludes Data File"  
 Password: Inpatient23

#### **UNS** Unspecified Site

Identifies codes that are considered an MCC or CC but lack specificity in regard to their anatomical location. The medical record documentation should be reviewed carefully, to ensure that no other code within the same category or subcategory can be assigned for greater specificity.

**G81.00** Flaccid hemiplegia affecting unspecified side **CC** **UNS** **MCC**

#### **UPD** Unacceptable Principal Diagnosis

This symbol identifies codes that should not be assigned as principal diagnosis for *inpatient* admissions. Codes with an unacceptable principal diagnosis edit are considered supplementary — describing circumstances that influence an individual's health status or an additional code — identifying conditions that are not specific manifestations but may be due to an underlying cause.

**✓7th** **T48.5X5** Adverse effect of other anti-common-cold drugs **UPD**

#### **HIV** HIV-related Condition

This symbol indicates that the condition is considered a major HIV-related diagnosis. When the condition is coded in combination with a diagnosis of human immunodeficiency virus (HIV), code B20, the case will move from MS-DRG/MS-LTC-DRG 977 to MS-DRGs/MS-LTC-DRGs 974-976.

**G96.9** Disorder of central nervous system, unspecified **HIV**

**HCC CMS-HCC Condition**

Identify conditions that are considered a CMS-HCC (hierarchical condition category) diagnosis.

The HCC codes represented in this manual have been updated to reflect the 2023 Initial ICD-10-CM Mappings for CMS-HCC Model v24.

**Note:** Finalized ICD-10-CM-to-HCC mappings for CMS-HCC have been provided in an easily searchable data file that can be accessed at the following:

<https://www.optumcoding.com/ProductUpdates/>

Title: "2023 Final ICD-10-CM HCC Mappings Data File"

Password: Inpatient23

**Y62.2 Failure of sterile precautions during kidney dialysis and other perfusion**

HCC

**Color Bars**

**Manifestation Code**

Codes defined as manifestation codes appear in italic type, with a blue color bar over the code description. A manifestation cannot be reported as a first-listed code; it is sequenced as a secondary diagnosis with the underlying disease code listed first.

**G32.89 Other specified degenerative disorders of nervous system in diseases classified elsewhere**

Degenerative encephalopathy in diseases classified elsewhere

**Questionable Admission Diagnoses**

Questionable admission diagnoses will appear with a yellow color bar over the code description. These codes, although not unacceptable as a PDx, may be considered a "questionable admission" when used as PDx in an acute care hospital.

**E66.09 Other obesity due to excess calories**

**Wrong Procedure Performed Edit**

An orange color bar over the code title indicates the Wrong Procedure Performed edit. This edit was created to identify cases in which wrong surgeries occurred. Any claim with a code from Y65.51-Y65.53 will be denied and returned to the provider. A surgical or other invasive procedure is considered to be a wrong procedure if one of the following is true:

- The procedure was performed on the wrong site.
- The procedure was performed on the wrong patient.
- The incorrect procedure was performed on a patient.

**Y65.51 Performance of wrong procedure (operation) on correct patient**

Wrong device implanted into correct surgical site

**EXCLUDES 1** performance of correct procedure (operation) on wrong side or body part (Y65.53)

**Unspecified Diagnosis**

Codes that appear with a gray color bar over the alphanumeric code identify unspecified diagnoses. These codes should be used in limited circumstances, when neither the diagnostic statement nor the documentation provides enough information to assign a more specific diagnosis code. The abbreviation NOS, "not otherwise specified," in the tabular list may be interpreted as "unspecified."

**G03.9 Meningitis, unspecified**  
Arachnoiditis (spinal) NOS

MCC

**Footnotes**

Certain codes in the tabular section have a numerical superscript located to the upper left of the code. This numerical superscript corresponds to a specific footnote description.

For example:

<sup>1</sup> **R57.1 Hypovolemic shock**

MCC HCC

For convenience, the footnote descriptions are provided on the front cover.

The following list also provides the footnote descriptions of all numerical superscripts found in the Tabular List of Diseases:

- 1 These codes are considered major complication/comorbidity (MCC) conditions only if the patient is discharged alive.
- 2 This condition is considered an MCC only when reported as an initial encounter for an open fracture (7th character B or C specific to category).
- 3 This condition is considered a CC only when reported as an initial encounter for a fracture (7th character A, B, or C specific to category) or a subsequent encounter for nonunion or malunion fracture (7th character K, M, N, P, Q, or R specific to category).
- 4 This condition is considered a CC only when reported as a subsequent encounter for a nonunion or malunion fracture (7th character K, M, N, P, Q, or R specific to category).
- 5 This condition is considered a CC only when reported as an initial encounter or subsequent encounter (7th character A or D).
- 6 This condition is considered an HCC when reported as initial encounter (7th character A, B, or C specific to category).
- 7 This condition is considered an HCC when reported as initial encounter (7th character A or B specific to category) or as a sequela.
- 8 This condition is considered an HCC when reported as a sequela.

**Chapter-Level Notations**

**Chapter-Specific Guidelines with Coding Examples**

Each chapter begins with the Official Guidelines for Coding and Reporting specific to that chapter, where provided. Coding examples specific to inpatient care settings have been provided to illustrate the coding and/or sequencing guidance in these guidelines.

**Muscle and Tendon Table**

ICD-10-CM categorizes certain muscles and tendons in the upper and lower extremities by their action (e.g., extension or flexion) as well as their anatomical location. The Muscle/Tendon table is provided at the beginning of chapter 13 and chapter 19 to help users when code selection depends on the action of the muscle and/or tendon.

**Note:** This table is not all-inclusive, and proper code assignment should be based on the provider's documentation.

**Illustrations**

This section includes illustrations of normal anatomy with ICD-10-CM-specific terminology.

	Malignant Primary	Malignant Secondary	Ca in situ	Benign	Uncertain Behavior	Unspecified Behavior
<b>Note:</b> The list below gives the code number for neoplasms by anatomical site. For each site there are six possible code numbers according to whether the neoplasm in question is malignant, benign, in situ, of uncertain behavior, or of unspecified nature. The description of the neoplasm will often indicate which of the six columns is appropriate; e.g., malignant melanoma of skin, benign fibroadenoma of breast, carcinoma in situ of cervix uteri. Where such descriptors are not present, the remainder of the Index should be consulted where guidance is given to the appropriate column for each morphological (histological) variety listed; e.g., Mesonephroma — see Neoplasm, malignant; Embryoma — see also Neoplasm, uncertain behavior; Disease, Bowen's — see Neoplasm, skin, in situ. However, the guidance in the Index can be overridden if one of the descriptors mentioned above is present; e.g., malignant adenoma of colon is coded to C18.9 and not to D12.6 as the adjective "malignant" overrides the Index entry "Adenoma — see also Neoplasm, benign, by site." Codes listed with a dash -, following the code have a required additional character for laterality. The tabular list must be reviewed for the complete code.						
<b>Neoplasm, neoplastic</b>	C80.1	C79.9	D09.9	D36.9	D48.9	D49.9
abdomen,						
abdominal	C76.2	C79.8- <input checked="" type="checkbox"/>	D09.8	D36.7	D48.7	D49.89
cavity	C76.2	C79.8- <input checked="" type="checkbox"/>	D09.8	D36.7	D48.7	D49.89
organ	C76.2	C79.8- <input checked="" type="checkbox"/>	D09.8	D36.7	D48.7	D49.89
viscera	C76.2	C79.8- <input checked="" type="checkbox"/>	D09.8	D36.7	D48.7	D49.89
wall — see also						
Neoplasm,						
abdomen, wall,	C44.509	C79.2	D04.5	D23.5	D48.5	D49.2
skin						
connective						
tissue	C49.4	C79.8- <input checked="" type="checkbox"/>	—	D21.4	D48.1	D49.2
skin	C44.509	—	—	—	—	—
basal cell						
carcinoma	C44.519	—	—	—	—	—
specified type						
NEC	C44.599	—	—	—	—	—
squamous cell						
carcinoma	C44.529	—	—	—	—	—
abdominopelvic	C76.8	C79.8- <input checked="" type="checkbox"/>	—	D36.7	D48.7	D49.89
accessory sinus — see						
Neoplasm, sinus						
acoustic nerve	C72.4- <input checked="" type="checkbox"/>	C79.49	—	D33.3	D43.3	D49.7
adenoid (pharynx)						
(tissue)	C11.1	C79.89	D00.08	D10.6	D37.05	D49.0
adipose tissue — see						
also Neoplasm,						
connective						
tissue	C49.4	C79.89	—	D21.9	D48.1	D49.2
adnexa (uterine)	C57.4	C79.89	D07.39	D28.7	D39.8	D49.59
adrenal	C74.9- <input checked="" type="checkbox"/>	C79.7- <input checked="" type="checkbox"/>	D09.3	D35.0- <input checked="" type="checkbox"/>	D44.1- <input checked="" type="checkbox"/>	D49.7
capsule	C74.9- <input checked="" type="checkbox"/>	C79.7- <input checked="" type="checkbox"/>	D09.3	D35.0- <input checked="" type="checkbox"/>	D44.1- <input checked="" type="checkbox"/>	D49.7
cortex	C74.9- <input checked="" type="checkbox"/>	C79.7- <input checked="" type="checkbox"/>	D09.3	D35.0- <input checked="" type="checkbox"/>	D44.1- <input checked="" type="checkbox"/>	D49.7
gland	C74.9- <input checked="" type="checkbox"/>	C79.7- <input checked="" type="checkbox"/>	D09.3	D35.0- <input checked="" type="checkbox"/>	D44.1- <input checked="" type="checkbox"/>	D49.7
medulla	C74.1- <input checked="" type="checkbox"/>	C79.7- <input checked="" type="checkbox"/>	D09.3	D35.0- <input checked="" type="checkbox"/>	D44.1- <input checked="" type="checkbox"/>	D49.7
ala nasi (external) —						
see also Neoplasm,						
skin, nose	C44.301	C79.2	D04.39	D23.39	D48.5	D49.2
alimentary canal or						
tract NEC	C26.9	C78.80	D01.9	D13.9	D37.9	D49.0
alveolar	C03.9	C79.89	D00.03	D10.39	D37.09	D49.0
mucosa	C03.9	C79.89	D00.03	D10.39	D37.09	D49.0
lower	C03.1	C79.89	D00.03	D10.39	D37.09	D49.0
upper	C03.0	C79.89	D00.03	D10.39	D37.09	D49.0
ridge or process	C41.1	C79.51	—	D16.5	D48.0	D49.2
carcinoma	C03.9	C79.8- <input checked="" type="checkbox"/>	—	—	—	—
lower	C03.1	C79.8- <input checked="" type="checkbox"/>	—	—	—	—
upper	C03.0	C79.8- <input checked="" type="checkbox"/>	—	—	—	—
lower	C41.1	C79.51	—	D16.5	D48.0	D49.2
mucosa	C03.9	C79.89	D00.03	D10.39	D37.09	D49.0
lower	C03.1	C79.89	D00.03	D10.39	D37.09	D49.0
upper	C03.0	C79.89	D00.03	D10.39	D37.09	D49.0
upper	C41.0	C79.51	—	D16.4	D48.0	D49.2
sulcus	C06.1	C79.89	D00.02	D10.39	D37.09	D49.0
alveolus	C03.9	C79.89	D00.03	D10.39	D37.09	D49.0
lower	C03.1	C79.89	D00.03	D10.39	D37.09	D49.0
upper	C03.0	C79.89	D00.03	D10.39	D37.09	D49.0
ampulla of Vater	C24.1	C78.89	D01.5	D13.5	D37.6	D49.0
ankle NEC	C76.5- <input checked="" type="checkbox"/>	C79.89	D04.7- <input checked="" type="checkbox"/>	D36.7	D48.7	D49.89
anorectum, anorectal						
(junction)	C21.8	C78.5	D01.3	D12.9	D37.8	D49.0
antecubital fossa or						
space	C76.4- <input checked="" type="checkbox"/>	C79.89	D04.6- <input checked="" type="checkbox"/>	D36.7	D48.7	D49.89
<b>Neoplasm, neoplastic</b>						
— continued						
antrum (Highmore)						
(maxillary)	C31.0	C78.39	D02.3	D14.0	D38.5	D49.1
pyloric	C16.3	C78.89	D00.2	D13.1	D37.1	D49.0
tympanicum	C30.1	C78.39	D02.3	D14.0	D38.5	D49.1
anus, anal	C21.0	C78.5	D01.3	D12.9	D37.8	D49.0
canal	C21.1	C78.5	D01.3	D12.9	D37.8	D49.0
cloacogenic						
zone	C21.2	C78.5	D01.3	D12.9	D37.8	D49.0
margin — see also						
Neoplasm, anus,						
skin	C44.500	C79.2	D04.5	D23.5	D48.5	D49.2
overlapping lesion						
with						
rectosigmoid						
junction or	C21.8	—	—	—	—	—
rectum	C44.500	C79.2	D04.5	D23.5	D48.5	D49.2
skin						
basal cell	C44.510	—	—	—	—	—
carcinoma						
specified type	C44.590	—	—	—	—	—
NEC						
squamous cell	C44.520	—	—	—	—	—
carcinoma						
sphincter	C21.1	C78.5	D01.3	D12.9	D37.8	D49.0
aorta (thoracic)	C49.3	C79.89	—	D21.3	D48.1	D49.2
abdominal	C49.4	C79.89	—	D21.4	D48.1	D49.2
aortic body	C75.5	C79.89	—	D35.6	D44.7	D49.7
aponeurosis	C49.9	C79.89	—	D21.9	D48.1	D49.2
palmar	C49.1- <input checked="" type="checkbox"/>	C79.89	—	D21.1- <input checked="" type="checkbox"/>	D48.1	D49.2
plantar	C49.2- <input checked="" type="checkbox"/>	C79.89	—	D21.2- <input checked="" type="checkbox"/>	D48.1	D49.2
appendix	C18.1	C78.5	D01.0	D12.1	D37.3	D49.0
arachnoid	C70.9	C79.49	—	D32.9	D42.9	D49.7
cerebral	C70.0	C79.32	—	D32.0	D42.0	D49.7
spinal	C70.1	C79.49	—	D32.1	D42.1	D49.7
areola	C50.0- <input checked="" type="checkbox"/>	C79.81	D05- <input checked="" type="checkbox"/>	D24- <input checked="" type="checkbox"/>	D48.6- <input checked="" type="checkbox"/>	D49.3
arm NEC	C76.4- <input checked="" type="checkbox"/>	C79.89	D04.6- <input checked="" type="checkbox"/>	D36.7	D48.7	D49.89
artery — see Neoplasm,						
connective tissue						
aryepiglottic fold	C13.1	C79.89	D00.08	D10.7	D37.05	D49.0
hypopharyngeal						
aspect	C13.1	C79.89	D00.08	D10.7	D37.05	D49.0
laryngeal aspect	C32.1	C78.39	D02.0	D14.1	D38.0	D49.1
marginal zone	C13.1	C79.89	D00.08	D10.7	D37.05	D49.0
arytenoid						
(cartilage)	C32.3	C78.39	D02.0	D14.1	D38.0	D49.1
fold — see Neoplasm,						
aryepiglottic						
associated with						
transplanted						
organ	C80.2	—	—	—	—	—
atlas	C41.2	C79.51	—	D16.6	D48.0	D49.2
atrium, cardiac	C38.0	C79.89	—	D15.1	D48.7	D49.89
auditory						
canal (external)	C44.20- <input checked="" type="checkbox"/>	C79.2	D04.2- <input checked="" type="checkbox"/>	D23.2- <input checked="" type="checkbox"/>	D48.5	D49.2
(skin)						
internal	C30.1	C78.39	D02.3	D14.0	D38.5	D49.1
nerve	C72.4- <input checked="" type="checkbox"/>	C79.49	—	D33.3	D43.3	D49.7
tube	C30.1	C78.39	D02.3	D14.0	D38.5	D49.1
opening	C11.2	C79.89	D00.08	D10.6	D37.05	D49.0
auricle, ear — see also						
Neoplasm, skin,						
ear	C44.20- <input checked="" type="checkbox"/>	C79.2	D04.2- <input checked="" type="checkbox"/>	D23.2- <input checked="" type="checkbox"/>	D48.5	D49.2
auricular canal						
(external) — see						
also Neoplasm, skin,						
ear	C44.20- <input checked="" type="checkbox"/>	C79.2	D04.2- <input checked="" type="checkbox"/>	D23.2- <input checked="" type="checkbox"/>	D48.5	D49.2
internal	C30.1	C78.39	D02.3	D14.0	D38.5	D49.2
autonomic nerve or						
nervous system						
NEC (see Neoplasm,						
nerve, peripheral)	C76.1	C79.89	D09.8	D36.7	D48.7	D49.89
axilla, axillary						
fold — see also						
Neoplasm, skin,						
trunk	C44.509	C79.2	D04.5	D23.5	D48.5	D49.2
back NEC	C76.8	C79.89	D04.5	D36.7	D48.7	D49.89
Bartholin's gland	C51.0	C79.82	D07.1	D28.0	D39.8	D49.59
basal ganglia	C71.0	C79.31	—	D33.0	D43.0	D49.6
basis pedunculi	C71.7	C79.31	—	D33.1	D43.1	D49.6
bile or biliary						
(tract)	C24.9	C78.89	D01.5	D13.5	D37.6	D49.0



- C7A.1 Malignant poorly differentiated neuroendocrine tumors** CC HCC  
 Malignant poorly differentiated neuroendocrine tumor NOS  
 Malignant poorly differentiated neuroendocrine carcinoma, any site  
 High grade neuroendocrine carcinoma, any site
- C7A.8 Other malignant neuroendocrine tumors** CC HCC  
 AHA: 2019,3Q,7

### Secondary neuroendocrine tumors (C7B)

#### ✓4th C7B Secondary neuroendocrine tumors

Use additional code to identify any functional activity

##### ✓5th C7B.0 Secondary carcinoid tumors

AHA: 2019,3Q,7

DEF: Specific type of slow-growing neuroendocrine tumors. Carcinoid tumors occur most commonly in the hormone producing cells of the gastrointestinal tracts and can also occur in the pancreas, testes, ovaries, or lungs.

- C7B.00 Secondary carcinoid tumors, unspecified site** HCC
- C7B.01 Secondary carcinoid tumors of distant lymph nodes** CC HCC
- C7B.02 Secondary carcinoid tumors of liver** CC HCC
- C7B.03 Secondary carcinoid tumors of bone** CC HCC
- C7B.04 Secondary carcinoid tumors of peritoneum** CC HCC  
 Mesentery metastasis of carcinoid tumor
- C7B.09 Secondary carcinoid tumors of other sites** CC HCC
- C7B.1 Secondary Merkel cell carcinoma** HCC  
 Merkel cell carcinoma nodal presentation  
 Merkel cell carcinoma visceral metastatic presentation
- C7B.8 Other secondary neuroendocrine tumors** CC HCC  
 AHA: 2019,3Q,7

### Malignant neoplasms of ill-defined, other secondary and unspecified sites (C76-C80)

#### ✓4th C76 Malignant neoplasm of other and ill-defined sites

**EXCLUDES 1** malignant neoplasm of female genitourinary tract NOS (C57.9)  
 malignant neoplasm of male genitourinary tract NOS (C63.9)  
 malignant neoplasm of lymphoid, hematopoietic and related tissue (C81-C96)  
 malignant neoplasm of skin (C44.-)  
 malignant neoplasm of unspecified site NOS (C80.1)

- C76.0 Malignant neoplasm of head, face and neck** HCC  
 Malignant neoplasm of cheek NOS  
 Malignant neoplasm of nose NOS
- C76.1 Malignant neoplasm of thorax** HCC  
 Intrathoracic malignant neoplasm NOS  
 Malignant neoplasm of axilla NOS  
 Thoracic malignant neoplasm NOS
- C76.2 Malignant neoplasm of abdomen** HCC
- C76.3 Malignant neoplasm of pelvis** HCC  
 Malignant neoplasm of groin NOS  
 Malignant neoplasm of sites overlapping systems within the pelvis  
 Rectovaginal (septum) malignant neoplasm  
 Rectovesical (septum) malignant neoplasm
- ✓5th C76.4 Malignant neoplasm of upper limb**
- C76.40 Malignant neoplasm of unspecified upper limb** HCC
- C76.41 Malignant neoplasm of right upper limb** HCC
- C76.42 Malignant neoplasm of left upper limb** HCC
- ✓5th C76.5 Malignant neoplasm of lower limb**
- C76.50 Malignant neoplasm of unspecified lower limb** HCC
- C76.51 Malignant neoplasm of right lower limb** HCC
- C76.52 Malignant neoplasm of left lower limb** HCC
- C76.8 Malignant neoplasm of other specified ill-defined sites** HCC  
 Malignant neoplasm of overlapping ill-defined sites

#### ✓4th C77 Secondary and unspecified malignant neoplasm of lymph nodes

**EXCLUDES 1** malignant neoplasm of lymph nodes, specified as primary (C81-C86, C88, C96.-)  
 mesentery metastasis of carcinoid tumor (C7B.04)  
 secondary carcinoid tumors of distant lymph nodes (C7B.01)

- C77.0 Secondary and unspecified malignant neoplasm of lymph nodes of head, face and neck** CC HCC  
 Secondary and unspecified malignant neoplasm of supraclavicular lymph nodes
- C77.1 Secondary and unspecified malignant neoplasm of intrathoracic lymph nodes** CC HCC
- C77.2 Secondary and unspecified malignant neoplasm of intra-abdominal lymph nodes** CC HCC
- C77.3 Secondary and unspecified malignant neoplasm of axilla and upper limb lymph nodes** CC HCC  
 Secondary and unspecified malignant neoplasm of pectoral lymph nodes
- C77.4 Secondary and unspecified malignant neoplasm of inguinal and lower limb lymph nodes** CC HCC
- C77.5 Secondary and unspecified malignant neoplasm of intrapelvic lymph nodes** CC HCC
- C77.8 Secondary and unspecified malignant neoplasm of lymph nodes of multiple regions** CC HCC
- C77.9 Secondary and unspecified malignant neoplasm of lymph node, unspecified** CC HCC

#### ✓4th C78 Secondary malignant neoplasm of respiratory and digestive organs

**EXCLUDES 1** secondary carcinoid tumors of liver (C7B.02)  
 secondary carcinoid tumors of peritoneum (C7B.04)  
**EXCLUDES 2** lymph node metastases (C77.0)

##### ✓5th C78.0 Secondary malignant neoplasm of lung

AHA: 2019,1Q,16

- C78.00 Secondary malignant neoplasm of unspecified lung** CC HCC
- C78.01 Secondary malignant neoplasm of right lung** CC HCC
- C78.02 Secondary malignant neoplasm of left lung** CC HCC
- C78.1 Secondary malignant neoplasm of mediastinum** CC HCC
- C78.2 Secondary malignant neoplasm of pleura** CC HCC
- ✓5th C78.3 Secondary malignant neoplasm of other and unspecified respiratory organs**
- C78.30 Secondary malignant neoplasm of unspecified respiratory organ** CC HCC
- C78.39 Secondary malignant neoplasm of other respiratory organs** CC HCC
- C78.4 Secondary malignant neoplasm of small intestine** CC HCC
- C78.5 Secondary malignant neoplasm of large intestine and rectum** CC HCC
- C78.6 Secondary malignant neoplasm of retroperitoneum and peritoneum** CC HCC  
 AHA: 2017,2Q,12
- C78.7 Secondary malignant neoplasm of liver and intrahepatic bile duct** CC HCC
- ✓5th C78.8 Secondary malignant neoplasm of other and unspecified digestive organs**
- C78.80 Secondary malignant neoplasm of unspecified digestive organ** CC HCC
- C78.89 Secondary malignant neoplasm of other digestive organs** CC HCC  
 Code also exocrine pancreatic insufficiency (K86.81)

#### ✓4th C79 Secondary malignant neoplasm of other and unspecified sites

**EXCLUDES 1** secondary carcinoid tumors (C7B.-)  
 secondary neuroendocrine tumors (C7B.-)

- ✓5th C79.0 Secondary malignant neoplasm of kidney and renal pelvis**
- C79.00 Secondary malignant neoplasm of unspecified kidney and renal pelvis** CC HCC
- C79.01 Secondary malignant neoplasm of right kidney and renal pelvis** CC HCC
- C79.02 Secondary malignant neoplasm of left kidney and renal pelvis** CC HCC
- ✓5th C79.1 Secondary malignant neoplasm of bladder and other and unspecified urinary organs**
- C79.10 Secondary malignant neoplasm of unspecified urinary organs** CC HCC

## Chapter 4. Endocrine, Nutritional and Metabolic Diseases (E00–E89)

### Chapter-specific Guidelines with Coding Examples

The chapter-specific guidelines from the ICD-10-CM Official Guidelines for Coding and Reporting have been provided below. Along with these guidelines are coding examples, contained in the shaded boxes, that have been developed to help illustrate the coding and/or sequencing guidance found in these guidelines.

#### a. Diabetes mellitus

The diabetes mellitus codes are combination codes that include the type of diabetes mellitus, the body system affected, and the complications affecting that body system. As many codes within a particular category as are necessary to describe all of the complications of the disease may be used. They should be sequenced based on the reason for a particular encounter. Assign as many codes from categories E08–E13 as needed to identify all of the associated conditions that the patient has.

Patient is seen for poorly controlled diabetes, type 2, with diabetic polyneuropathy and diabetic retinopathy with macular edema

**E11.65** Type 2 diabetes mellitus with hyperglycemia

**E11.311** Type 2 diabetes mellitus with unspecified diabetic retinopathy with macular edema

**E11.42** Type 2 diabetes mellitus with diabetic polyneuropathy

*Explanation:* Use as many codes to describe the diabetic complications as needed. Many are combination codes that describe more than one condition. Code first the reason for the encounter. "Poorly controlled" is described as "with hyperglycemia." Diabetes documented as "uncontrolled" is not assumed to be hyperglycemic but can be classified to either hyperglycemia or hypoglycemia. If documentation is not clear, the provider must be queried so that the appropriate code can be reported.

#### 1) Type of diabetes

The age of a patient is not the sole determining factor, though most type 1 diabetes develop the condition before reaching puberty. For this reason, type 1 diabetes mellitus is also referred to as juvenile diabetes.

A 45-year-old patient is diagnosed with type 1 diabetes

**E10.9** Type 1 diabetes mellitus without complications

*Explanation:* Although most type 1 diabetes are diagnosed in childhood or adolescence, it can also begin in adults.

#### 2) Type of diabetes mellitus not documented

If the type of diabetes mellitus is not documented in the medical record the default is E11.-, Type 2 diabetes mellitus.

H & P lists diabetes and hypertension on patient problem list

**E11.9** Type 2 diabetes mellitus without complications

**I10** Essential (primary) hypertension

*Explanation:* Since the type of diabetes was not documented and no complications were noted, the default code is E11.9.

#### 3) Diabetes mellitus and the use of insulin, oral hypoglycemics, and injectable non-insulin drugs

If the documentation in a medical record does not indicate the type of diabetes but does indicate that the patient uses insulin, code E11.-, Type 2 diabetes mellitus, should be assigned. Additional code(s) should be assigned from category Z79 to identify the long-term (current) use of insulin, oral hypoglycemic drugs, or injectable non-insulin antidiabetic, as follows:

If the patient is treated with both oral **hypoglycemic drugs** and insulin, both code Z79.4, Long term (current) use of insulin, and code Z79.84, Long term (current) use of oral hypoglycemic drugs, should be assigned.

If the patient is treated with both insulin and an injectable non-insulin antidiabetic drug, assign codes Z79.4, Long term (current) use of insulin, and **Z79.85, Long-term (current) use of injectable non-insulin antidiabetic drugs.**

If the patient is treated with both oral hypoglycemic drugs and an injectable non-insulin antidiabetic drug, assign codes Z79.84, Long term (current) use of oral hypoglycemic drugs, and **Z79.85, Long-term (current) use of injectable non-insulin antidiabetic drugs.**

Code Z79.4 should not be assigned if insulin is given temporarily to bring a type 2 patient's blood sugar under control during an encounter.

Type 2 diabetic patient on daily metformin and Victoza is admitted in ketoacidosis, insulin given to stabilize blood sugars and discontinued at discharge

**E11.10** Type 2 diabetes mellitus with ketoacidosis without coma

**Z79.84** Long term (current) use of oral hypoglycemic drugs

**Z79.85** Long term (current) use of injectable non-insulin anti-diabetic drugs

*Explanation:* Documentation indicates the patient is on an oral antidiabetic medication (metformin) and an injectable noninsulin antidiabetic medication (Victoza). Although insulin was given to the patient during the encounter, it was discontinued at discharge, indicating that the patient does not regularly use insulin. A Z code representing long-term use of the oral drug and long-term use of the injectable medication can be applied. Applying code Z79.4 to represent long-term use of insulin would be inappropriate.

#### 4) Diabetes mellitus in pregnancy and gestational diabetes

See Section I.C.15. Diabetes mellitus in pregnancy.

See Section I.C.15. Gestational (pregnancy induced) diabetes

#### 5) Complications due to insulin pump malfunction

##### (a) Underdose of insulin due to insulin pump failure

An underdose of insulin due to an insulin pump failure should be assigned to a code from subcategory T85.6, Mechanical complication of other specified internal and external prosthetic devices, implants and grafts, that specifies the type of pump malfunction, as the principal or first-listed code, followed by code T38.3X6-, Underdosing of insulin and oral hypoglycemic [antidiabetic] drugs. Additional codes for the type of diabetes mellitus and any associated complications due to the underdosing should also be assigned.

A 24-year-old type 1 diabetic male treated in ED for hyperglycemia; insulin pump found to be malfunctioning and underdosing

**T85.614A** Breakdown (mechanical) of insulin pump, initial encounter

**T38.3X6A** Underdosing of insulin and oral hypoglycemic [antidiabetic] drugs, initial encounter

**E10.65** Type 1 diabetes mellitus with hyperglycemia

*Explanation:* The complication code for the mechanical breakdown of the pump is sequenced first, followed by the underdosing code and type of diabetes with complication. Code all other diabetic complication codes necessary to describe the patient's condition.

##### (b) Overdose of insulin due to insulin pump failure

The principal or first-listed code for an encounter due to an insulin pump malfunction resulting in an overdose of insulin, should also be T85.6-, Mechanical complication of other specified internal and external prosthetic devices, implants and grafts, followed by code T38.3X1-, Poisoning by insulin and oral hypoglycemic [antidiabetic] drugs, accidental (unintentional).

A 24-year-old type 1 diabetic male found down with diabetic coma, brought into ED and treated for hypoglycemia; insulin pump found to be malfunctioning and overdosing

**T85.614A** Breakdown (mechanical) of insulin pump, initial encounter

**T38.3X1A** Poisoning by insulin and oral hypoglycemic [antidiabetic] drugs, accidental (unintentional), initial encounter

**E10.641** Type 1 diabetes mellitus with hypoglycemia with coma

*Explanation:* The complication code for the mechanical breakdown of the pump is sequenced first, followed by the poisoning code and type of diabetes with complication. All the characters in the combination code must be used to form a valid code and to fully describe the type of diabetes, the hypoglycemia, and the coma.



**Chapter 9. Diseases of the Circulatory System (I00-I99)**

**EXCLUDES 2** certain conditions originating in the perinatal period (P04-P96)  
 certain infectious and parasitic diseases (A00-B99)  
 complications of pregnancy, childbirth and the puerperium (O00-O9A)  
 congenital malformations, deformations, and chromosomal abnormalities (Q00-Q99)  
 endocrine, nutritional and metabolic diseases (E00-E88)  
 injury, poisoning and certain other consequences of external causes (S00-T88)  
 neoplasms (C00-D49)  
 symptoms, signs and abnormal clinical and laboratory findings, not elsewhere classified (R00-R94)  
 systemic connective tissue disorders (M30-M36)  
 transient cerebral ischemic attacks and related syndromes (G45.-)

This chapter contains the following blocks:

- I00-I02 Acute rheumatic fever
- I05-I09 Chronic rheumatic heart diseases
- I10-I16 Hypertensive diseases
- I20-I25 Ischemic heart diseases
- I26-I28 Pulmonary heart disease and diseases of pulmonary circulation
- I30-I5A Other forms of heart disease
- I60-I69 Cerebrovascular diseases
- I70-I79 Diseases of arteries, arterioles and capillaries
- I80-I89 Diseases of veins, lymphatic vessels and lymph nodes, not elsewhere classified
- I95-I99 Other and unspecified disorders of the circulatory system

**Acute rheumatic fever (I00-I02)**

**DEF:** Rheumatic fever: Inflammatory disease that can follow a throat infection by group A streptococci. Complications can involve the joints (arthritis), subcutaneous tissue (nodules), skin (erythema marginatum), heart (carditis), or brain (chorea).

**I00 Rheumatic fever without heart involvement**

**INCLUDES** arthritis, rheumatic, acute or subacute

**EXCLUDES 1** rheumatic fever with heart involvement (I01.0-I01.9)

**✓4<sup>th</sup> I01 Rheumatic fever with heart involvement**

**EXCLUDES 1** chronic diseases of rheumatic origin (I05-I09) unless rheumatic fever is also present or there is evidence of reactivation or activity of the rheumatic process

**I01.0 Acute rheumatic pericarditis**

Any condition in I00 with pericarditis

Rheumatic pericarditis (acute)

**EXCLUDES 1** acute pericarditis not specified as rheumatic (I30.-)

**I01.1 Acute rheumatic endocarditis**

Any condition in I00 with endocarditis or valvulitis

Acute rheumatic valvulitis

**I01.2 Acute rheumatic myocarditis**

Any condition in I00 with myocarditis

**I01.8 Other acute rheumatic heart disease**

Any condition in I00 with other or multiple types of heart involvement

Acute rheumatic pancarditis

**I01.9 Acute rheumatic heart disease, unspecified**

Any condition in I00 with unspecified type of heart involvement

Rheumatic carditis, acute

Rheumatic heart disease, active or acute

**✓4<sup>th</sup> I02 Rheumatic chorea**

**INCLUDES** Sydenham's chorea

chorea NOS (G25.5)

**EXCLUDES 1** Huntington's chorea (G10)

**I02.0 Rheumatic chorea with heart involvement**

Chorea NOS with heart involvement

Rheumatic chorea with heart involvement of any type classifiable under I01.-

**I02.9 Rheumatic chorea without heart involvement**

Rheumatic chorea NOS

**Chronic rheumatic heart diseases (I05-I09)****✓4<sup>th</sup> I05 Rheumatic mitral valve diseases**

**INCLUDES** conditions classifiable to both I05.0 and I05.2-I05.9, whether specified as rheumatic or not

**EXCLUDES 1** mitral valve disease specified as nonrheumatic (I34.-)  
 mitral valve disease with aortic and/or tricuspid valve involvement (I08.-)

**I05.0 Rheumatic mitral stenosis**

Mitral (valve) obstruction (rheumatic)

**I05.1 Rheumatic mitral insufficiency**

Rheumatic mitral incompetence

Rheumatic mitral regurgitation

**EXCLUDES 1** mitral insufficiency not specified as rheumatic (I34.0)

**I05.2 Rheumatic mitral stenosis with insufficiency**

Rheumatic mitral stenosis with incompetence or regurgitation

**I05.8 Other rheumatic mitral valve diseases**

Rheumatic mitral (valve) failure

**I05.9 Rheumatic mitral valve disease, unspecified**

Rheumatic mitral (valve) disorder (chronic) NOS

**✓4<sup>th</sup> I06 Rheumatic aortic valve diseases**

**EXCLUDES 1** aortic valve disease not specified as rheumatic (I35.-)

aortic valve disease with mitral and/or tricuspid valve involvement (I08.-)

**I06.0 Rheumatic aortic stenosis**

Rheumatic aortic (valve) obstruction

**I06.1 Rheumatic aortic insufficiency**

Rheumatic aortic incompetence

Rheumatic aortic regurgitation

**I06.2 Rheumatic aortic stenosis with insufficiency**

Rheumatic aortic stenosis with incompetence or regurgitation

**I06.8 Other rheumatic aortic valve diseases****I06.9 Rheumatic aortic valve disease, unspecified**

Rheumatic aortic (valve) disease NOS

**✓4<sup>th</sup> I07 Rheumatic tricuspid valve diseases**

**INCLUDES** rheumatic tricuspid valve diseases specified as rheumatic or unspecified

**EXCLUDES 1** tricuspid valve disease specified as nonrheumatic (I36.-)

tricuspid valve disease with aortic and/or mitral valve involvement (I08.-)

**I07.0 Rheumatic tricuspid stenosis**

Tricuspid (valve) stenosis (rheumatic)

**I07.1 Rheumatic tricuspid insufficiency**

Tricuspid (valve) insufficiency (rheumatic)

**I07.2 Rheumatic tricuspid stenosis and insufficiency****I07.8 Other rheumatic tricuspid valve diseases****I07.9 Rheumatic tricuspid valve disease, unspecified**

Rheumatic tricuspid valve disorder NOS

**✓4<sup>th</sup> I08 Multiple valve diseases**

**INCLUDES** multiple valve diseases specified as rheumatic or unspecified

**EXCLUDES 1** endocarditis, valve unspecified (I38)

multiple valve disease specified as nonrheumatic (I34.-, I35.-, I36.-, I37.-, I38.-, Q22.-, Q23.-, Q24.8-)  
 rheumatic valve disease NOS (I09.1)

**I08.0 Rheumatic disorders of both mitral and aortic valves**

Involvement of both mitral and aortic valves specified as rheumatic or unspecified

AHA: 2019,2Q,5

**I08.1 Rheumatic disorders of both mitral and tricuspid valves****I08.2 Rheumatic disorders of both aortic and tricuspid valves****I08.3 Combined rheumatic disorders of mitral, aortic and tricuspid valves****I08.8 Other rheumatic multiple valve diseases****I08.9 Rheumatic multiple valve disease, unspecified****✓4<sup>th</sup> I09 Other rheumatic heart diseases****I09.0 Rheumatic myocarditis**

**EXCLUDES 1** myocarditis not specified as rheumatic (I51.4)

**I09.1 Rheumatic diseases of endocardium, valve unspecified**

Rheumatic endocarditis (chronic)

Rheumatic valvulitis (chronic)

**EXCLUDES 1** endocarditis, valve unspecified (I38)

**I09.2 Chronic rheumatic pericarditis**

Adherent pericardium, rheumatic

Chronic rheumatic mediastinopericarditis

Chronic rheumatic myopericarditis

**EXCLUDES 1** chronic pericarditis not specified as rheumatic (I31.-)

**✓5<sup>th</sup> I09.8 Other specified rheumatic heart diseases****I09.81 Rheumatic heart failure**

Use additional code to identify type of heart failure (I50.-)

**I09.89 Other specified rheumatic heart diseases**

Rheumatic disease of pulmonary valve

**✓4# J10 Influenza due to **other** identified influenza virus**

**INCLUDES** influenza A (non-novel)  
influenza B  
influenza C

**EXCLUDES 1** influenza due to avian influenza virus (J09.X-)  
influenza due to swine flu (J09.X-)  
influenza due to unidentified influenza virus (J11.-)

**✓5# J10.0 Influenza due to other identified influenza virus with **pneumonia****

Code also associated lung abscess, if applicable (J85.1)

**J10.00 Influenza due to other identified influenza virus with unspecified type of pneumonia** **MCC****J10.01 Influenza due to other identified influenza virus with **the same other identified influenza virus pneumonia**** **MCC****J10.08 Influenza due to other identified influenza virus with other specified pneumonia** **HIV MCC**

Code also other specified type of pneumonia

**J10.1 Influenza due to other identified influenza virus with **other respiratory manifestations****

Influenza due to other identified influenza virus NOS  
Influenza due to other identified influenza virus with laryngitis  
Influenza due to other identified influenza virus with pharyngitis  
Influenza due to other identified influenza virus with upper respiratory symptoms

Use additional code for associated pleural effusion, if applicable (J91.8)

Use additional code for associated sinusitis, if applicable (J01.-)  
**AHA:** 2016,3Q,10-11

**J10.2 Influenza due to other identified influenza virus with **gastrointestinal manifestations****

Influenza due to other identified influenza virus gastroenteritis  
**EXCLUDES 1** "intestinal flu" [viral gastroenteritis] (A08.-)

**✓5# J10.8 Influenza due to other identified influenza virus with other manifestations****J10.81 Influenza due to other identified influenza virus with **encephalopathy******J10.82 Influenza due to other identified influenza virus with **myocarditis******J10.83 Influenza due to other identified influenza virus with **otitis media****

Use additional code for any associated perforated tympanic membrane (H72.-)

**J10.89 Influenza due to other identified influenza virus with other manifestations**

Use additional codes to identify the manifestations

**✓4# J11 Influenza due to **unidentified** influenza virus****✓5# J11.0 Influenza due to unidentified influenza virus with **pneumonia****

Code also associated lung abscess, if applicable (J85.1)

**AHA:** 2016,3Q,11

**J11.00 Influenza due to unidentified influenza virus with unspecified type of pneumonia** **MCC**

Influenza with pneumonia NOS

**J11.08 Influenza due to unidentified influenza virus with **specified pneumonia**** **MCC**

Code also other specified type of pneumonia

**J11.1 Influenza due to unidentified influenza virus with **other respiratory manifestations****

Influenza NOS  
Influenzal laryngitis NOS  
Influenzal pharyngitis NOS  
Influenza with upper respiratory symptoms NOS

Use additional code for associated pleural effusion, if applicable (J91.8)

Use additional code for associated sinusitis, if applicable (J01.-)

**J11.2 Influenza due to unidentified influenza virus with **gastrointestinal manifestations****

Influenza gastroenteritis NOS  
**EXCLUDES 1** "intestinal flu" [viral gastroenteritis] (A08.-)

**✓5# J11.8 Influenza due to unidentified influenza virus with other manifestations****J11.81 Influenza due to unidentified influenza virus with **encephalopathy****

Influenzal encephalopathy NOS

**J11.82 Influenza due to unidentified influenza virus with **myocarditis****

Influenzal myocarditis NOS

**J11.83 Influenza due to unidentified influenza virus with **otitis media****

Influenzal otitis media NOS

Use additional code for any associated perforated tympanic membrane (H72.-)

**J11.89 Influenza due to unidentified influenza virus with other manifestations**

Use additional codes to identify the manifestations

**✓4# J12 Viral pneumonia, not elsewhere classified**

**INCLUDES** bronchopneumonia due to viruses other than influenza viruses

Code first associated influenza, if applicable (J09.X1, J10.0-, J11.0-)

Code also associated abscess, if applicable (J85.1)

**EXCLUDES 1** aspiration pneumonia due to anesthesia during labor and delivery (O74.0)

aspiration pneumonia due to anesthesia during pregnancy (O29)

aspiration pneumonia due to anesthesia during puerperium (O89.0)

aspiration pneumonia due to solids and liquids (J69.-)

aspiration pneumonia NOS (J69.0)

congenital pneumonia (P23.0)

congenital rubella pneumonitis (P35.0)

interstitial pneumonia NOS (J84.9)

lipid pneumonia (J69.1)

neonatal aspiration pneumonia (P24.-)

**AHA:** 2020,2Q,28; 2019,1Q,35; 2018,3Q,24; 2016,3Q,15; 2013,4Q,118

**J12.0 Adenoviral pneumonia** **MCC****J12.1 Respiratory syncytial virus pneumonia** **MCC**

RSV pneumonia

**J12.2 Parainfluenza virus pneumonia** **MCC****J12.3 Human metapneumovirus pneumonia** **HIV MCC****✓5# J12.8 Other viral pneumonia****J12.81 Pneumonia due to **SARS-associated coronavirus**** **HIV MCC**

Severe acute respiratory syndrome NOS

**DEF:** Inflammation of the lungs with consolidation, caused by the severe adult respiratory syndrome (SARS)-associated coronavirus or SARS-CoV. This pneumonia should not be confused with that caused by SARS-CoV-2 (COVID-19).

**J12.82 Pneumonia due to **coronavirus disease 2019**** **HIV MCC UPD**

Pneumonia due to 2019 novel coronavirus (SARS-CoV-2)

Pneumonia due to COVID-19

Code first COVID-19 (U07.1)

**AHA:** 2021,1Q,25-30,31-49

**J12.89 Other viral pneumonia** **HIV MCC**

**AHA:** 2021,1Q,33-34; 2020,2Q,8,11; 2020,1Q,34-36

**J12.9 Viral pneumonia, unspecified** **HIV MCC****J13 Pneumonia due to **Streptococcus pneumoniae**** **HIV MCC MCC**

Bronchopneumonia due to *S. pneumoniae*

Code first associated influenza, if applicable (J09.X1, J10.0-, J11.0-)

Code also associated abscess, if applicable (J85.1)

**EXCLUDES 1** congenital pneumonia due to *S. pneumoniae* (P23.6)

lobar pneumonia, unspecified organism (J18.1)

pneumonia due to other streptococci (J15.3-J15.4)

**AHA:** 2020,2Q,28; 2019,1Q,35; 2018,3Q,24; 2016,3Q,15; 2013,4Q,118

**J14 Pneumonia due to **Hemophilus influenzae**** **HIV MCC MCC**

Bronchopneumonia due to *H. influenzae*

Code first associated influenza, if applicable (J09.X1, J10.0-, J11.0-)

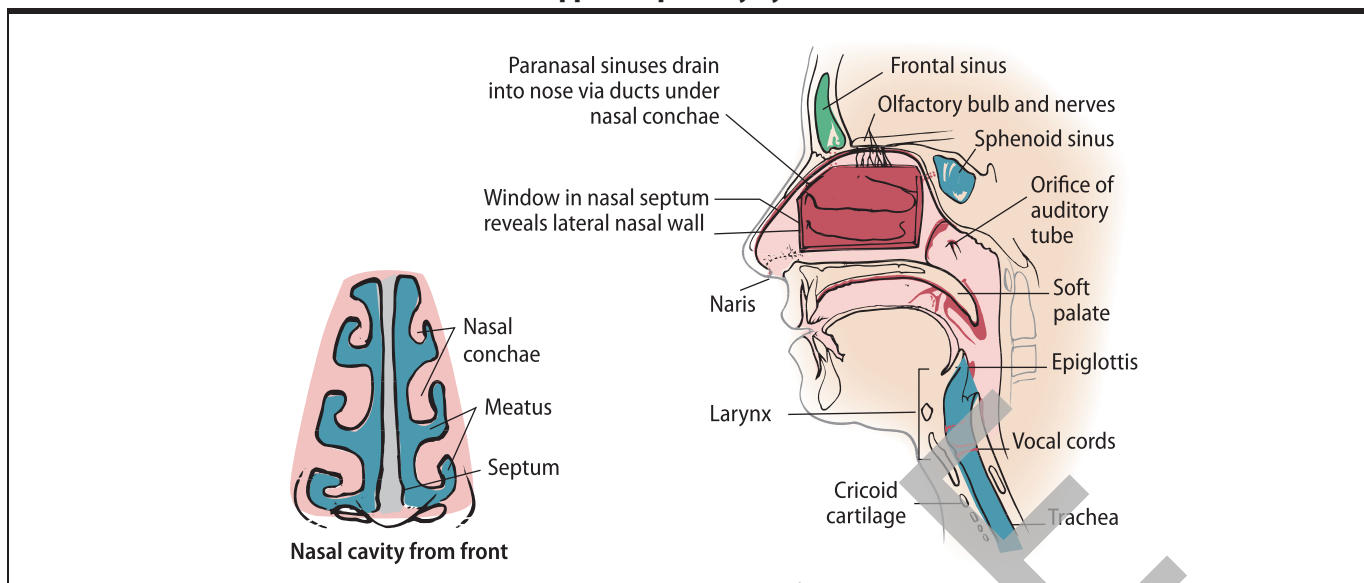
Code also associated abscess, if applicable (J85.1)

**EXCLUDES 1** congenital pneumonia due to *H. influenzae* (P23.6)

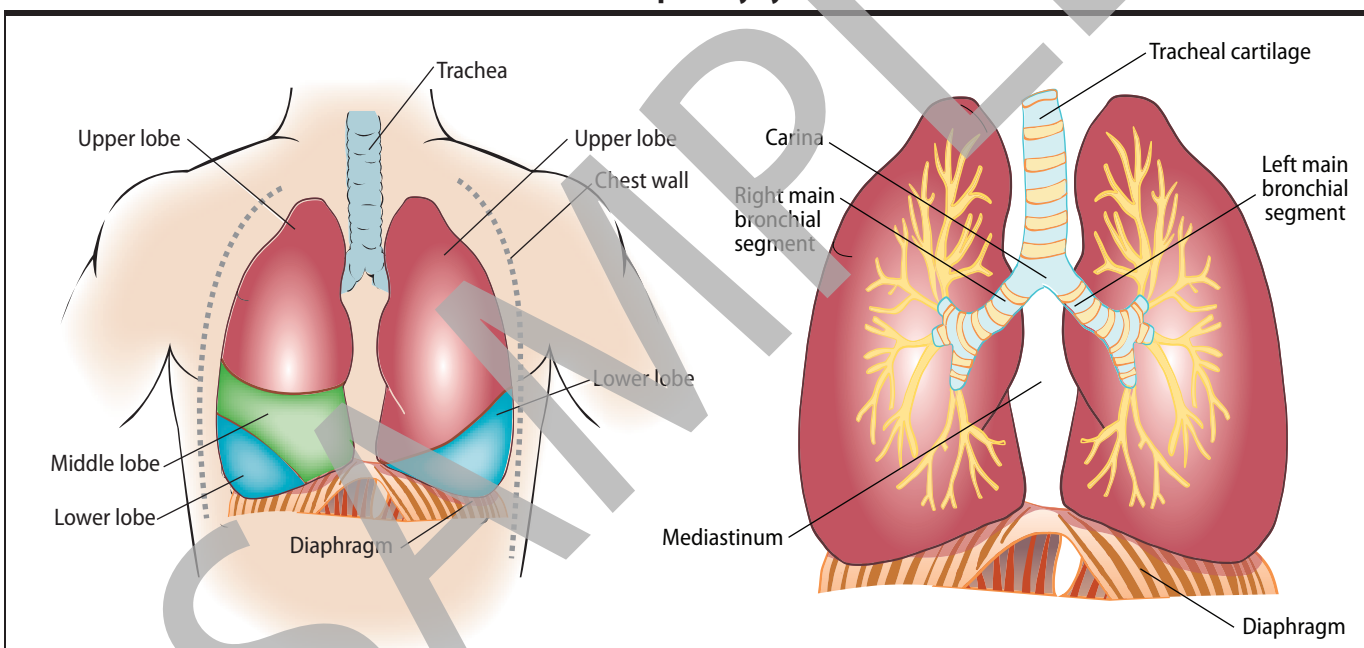
**AHA:** 2020,2Q,28; 2019,1Q,35; 2018,3Q,24; 2016,3Q,15; 2013,4Q,118

026.21	Pregnancy care for patient with recurrent pregnancy loss, <b>first trimester</b>	M ♀
026.22	Pregnancy care for patient with recurrent pregnancy loss, <b>second trimester</b>	M ♀
026.23	Pregnancy care for patient with recurrent pregnancy loss, <b>third trimester</b>	M ♀
✓ 5 <sup>th</sup> 026.3	Retained intrauterine contraceptive device in pregnancy	
026.30	Retained intrauterine contraceptive device in pregnancy, unspecified trimester	M ♀
026.31	Retained intrauterine contraceptive device in pregnancy, <b>first trimester</b>	M ♀
026.32	Retained intrauterine contraceptive device in pregnancy, <b>second trimester</b>	M ♀
026.33	Retained intrauterine contraceptive device in pregnancy, <b>third trimester</b>	M ♀
✓ 5 <sup>th</sup> 026.4	Herpes gestationis	
	DEF: Rare skin disorder of unknown origin that appears on the abdomen in the second and third trimester as intensely itchy blisters that spread to other sites.	
026.40	Herpes gestationis, unspecified trimester	M ♀
026.41	Herpes gestationis, <b>first trimester</b>	M ♀
026.42	Herpes gestationis, <b>second trimester</b>	M ♀
026.43	Herpes gestationis, <b>third trimester</b>	M ♀
✓ 5 <sup>th</sup> 026.5	Maternal hypotension syndrome	
	Supine hypotensive syndrome	
026.50	Maternal hypotension syndrome, unspecified trimester	M ♀
026.51	Maternal hypotension syndrome, <b>first trimester</b>	M ♀
026.52	Maternal hypotension syndrome, <b>second trimester</b>	M ♀
026.53	Maternal hypotension syndrome, <b>third trimester</b>	M ♀
✓ 5 <sup>th</sup> 026.6	Liver and biliary tract disorders in pregnancy, childbirth and the puerperium	
	Use additional code to identify the specific disorder	
	EXCLUDES 2 hepatorenal syndrome following labor and delivery (O90.4)	
✓ 6 <sup>th</sup> 026.61	Liver and biliary tract disorders in pregnancy	
026.611	Liver and biliary tract disorders in pregnancy, <b>first trimester</b>	CC M ♀
026.612	Liver and biliary tract disorders in pregnancy, <b>second trimester</b>	CC M ♀
026.613	Liver and biliary tract disorders in pregnancy, <b>third trimester</b>	CC M ♀
026.619	Liver and biliary tract disorders in pregnancy, unspecified trimester	M ♀
026.62	Liver and biliary tract disorders in childbirth	CC M ♀
026.63	Liver and biliary tract disorders in the puerperium	M ♀
✓ 5 <sup>th</sup> 026.7	Subluxation of symphysis (pubis) in pregnancy, childbirth and the puerperium	
	EXCLUDES 1 traumatic separation of symphysis (pubis) during childbirth (O71.6)	
✓ 6 <sup>th</sup> 026.71	Subluxation of symphysis (pubis) in pregnancy	
026.711	Subluxation of symphysis (pubis) in pregnancy, <b>first trimester</b>	M ♀
026.712	Subluxation of symphysis (pubis) in pregnancy, <b>second trimester</b>	M ♀
026.713	Subluxation of symphysis (pubis) in pregnancy, <b>third trimester</b>	M ♀
026.719	Subluxation of symphysis (pubis) in pregnancy, unspecified trimester	M ♀
026.72	Subluxation of symphysis (pubis) in childbirth	M ♀
026.73	Subluxation of symphysis (pubis) in the puerperium	M ♀
✓ 5 <sup>th</sup> 026.8	Other specified pregnancy related conditions	
✓ 6 <sup>th</sup> 026.81	Pregnancy related exhaustion and fatigue	
026.811	Pregnancy related exhaustion and fatigue, <b>first trimester</b>	M ♀
026.812	Pregnancy related exhaustion and fatigue, <b>second trimester</b>	M ♀
026.813	Pregnancy related exhaustion and fatigue, <b>third trimester</b>	M ♀
026.819	Pregnancy related exhaustion and fatigue, unspecified trimester	M ♀
✓ 6 <sup>th</sup> 026.82	Pregnancy related peripheral neuritis	
026.821	Pregnancy related peripheral neuritis, <b>first trimester</b>	M ♀
026.822	Pregnancy related peripheral neuritis, <b>second trimester</b>	M ♀
026.823	Pregnancy related peripheral neuritis, <b>third trimester</b>	M ♀
026.829	Pregnancy related peripheral neuritis, unspecified trimester	M ♀
✓ 6 <sup>th</sup> 026.83	Pregnancy related renal disease	
	Use additional code to identify the specific disorder	
026.831	Pregnancy related renal disease, <b>first trimester</b>	CC M ♀
026.832	Pregnancy related renal disease, <b>second trimester</b>	CC M ♀
026.833	Pregnancy related renal disease, <b>third trimester</b>	CC M ♀
026.839	Pregnancy related renal disease, unspecified trimester	M ♀
✓ 6 <sup>th</sup> 026.84	Uterine size-date discrepancy complicating pregnancy	
	EXCLUDES 1 encounter for suspected problem with fetal growth ruled out (Z03.74)	
026.841	Uterine size-date discrepancy, <b>first trimester</b>	M ♀
026.842	Uterine size-date discrepancy, <b>second trimester</b>	M ♀
026.843	Uterine size-date discrepancy, <b>third trimester</b>	M ♀
026.849	Uterine size-date discrepancy, unspecified trimester	M ♀
✓ 6 <sup>th</sup> 026.85	Spotting complicating pregnancy	
026.851	Spotting complicating pregnancy, <b>first trimester</b>	M ♀
026.852	Spotting complicating pregnancy, <b>second trimester</b>	M ♀
026.853	Spotting complicating pregnancy, <b>third trimester</b>	M ♀
026.859	Spotting complicating pregnancy, unspecified trimester	M ♀
026.86	Pruritic urticarial papules and plaques of pregnancy (PUPPP)	M ♀
	Polymorphic eruption of pregnancy	
✓ 6 <sup>th</sup> 026.87	Cervical shortening	
	EXCLUDES 1 encounter for suspected cervical shortening ruled out (Z03.75)	
	DEF: Cervix that has shortened to less than 25 mm before the 24th week of pregnancy. A shortened cervix is a warning sign for impending premature delivery and is treated by cervical cerclage placement or progesterone.	
026.872	Cervical shortening, <b>second trimester</b>	CC M ♀
026.873	Cervical shortening, <b>third trimester</b>	CC M ♀
026.879	Cervical shortening, unspecified trimester	CC M ♀
✓ 6 <sup>th</sup> 026.89	Other specified pregnancy related conditions	
	AHA: 2015.3Q.40	
026.891	Other specified pregnancy related conditions, <b>first trimester</b>	M ♀
026.892	Other specified pregnancy related conditions, <b>second trimester</b>	M ♀
026.893	Other specified pregnancy related conditions, <b>third trimester</b>	M ♀
026.899	Other specified pregnancy related conditions, unspecified trimester	M ♀
✓ 5 <sup>th</sup> 026.9	Pregnancy related conditions, unspecified	
026.90	Pregnancy related conditions, unspecified, unspecified trimester	M ♀
026.91	Pregnancy related conditions, unspecified, <b>first trimester</b>	M ♀
026.92	Pregnancy related conditions, unspecified, <b>second trimester</b>	M ♀
026.93	Pregnancy related conditions, unspecified, <b>third trimester</b>	M ♀

### Upper Respiratory System



### Lower Respiratory System



### Paranasal Sinuses

