

ICD-10-CM Expert for Skilled Nursing Facilities and Inpatient Rehabilitation Facilities

The complete official code set

Codes valid from October 1, 2020
through September 30, 2021

2021

[optum360coding.com](https://www.optum360coding.com)

Contents

Preface	iii
ICD-10-CM Official Preface	iii
Characteristics of ICD-10-CM	iii

How to Use ICD-10-CM Expert for Skilled Nursing Facilities and Inpatient Rehabilitation Facilities 2021

Introduction	iv
What's New for 2021	iv
Conversion Table	iv
10 Steps to Correct Coding	iv
Official ICD-10-CM Guidelines for Coding and Reporting	iv
Indexes	v
Index to Diseases and Injuries	v
Neoplasm Table	v
Table of Drugs and Chemicals	v
External Causes Index	v
Index Notations	v
Tabular List of Diseases	vi
Code and Code Descriptions	vi
Tabular Notations	vi
Official Notations	vi
Optum360 Notations	vii
Icons	vii
Color Bars	ix
Chapter-Level Notations	ix
Appendixes	ix
Illustrations	ix

What's New for 2021	x
Official Updates	x
Proprietary Updates	xvii

Conversion Table of ICD-10-CM Codes

10 Steps to Correct Coding

ICD-10-CM Official Guidelines for Coding and Reporting

ICD-10-CM Index to Diseases and Injuries

ICD-10-CM Neoplasm Table

ICD-10-CM Table of Drugs and Chemicals

ICD-10-CM Index to External Causes

ICD-10-CM Tabular List of Diseases and Injuries

Chapter 1. Certain Infectious and Parasitic Diseases (A00-B99)	439
Chapter 2. Neoplasms (C00-D49)	465
Chapter 3. Diseases of the Blood and Blood-forming Organs and Certain Disorders Involving the Immune Mechanism (D50-D89)	505
Chapter 4. Endocrine, Nutritional and Metabolic Diseases (E00-E89)	519
Chapter 5. Mental, Behavioral, and Neurodevelopmental Disorders (F01-F99)	543
Chapter 6. Diseases of the Nervous System (G00-G99)	569
Chapter 7. Diseases of the Eye and Adnexa (H00-H59)	593

Chapter 8. Diseases of the Ear and Mastoid Process (H60-H95)	633
Chapter 9. Diseases of the Circulatory System (I00-I99)	647
Chapter 10. Diseases of the Respiratory System (J00-J99)	693
Chapter 11. Diseases of the Digestive System (K00-K95)	711
Chapter 12. Diseases of the Skin and Subcutaneous Tissue (L00-L99)	735
Chapter 13. Diseases of the Musculoskeletal System and Connective Tissue (M00-M99)	759
Chapter 14. Diseases of the Genitourinary System (N00-N99)	851
Chapter 15. Pregnancy, Childbirth and the Puerperium (O00-O9A)	871
Chapter 16. Certain Conditions Originating in the Perinatal Period (P00-P96)	911
Chapter 17. Congenital Malformations, Deformations and Chromosomal Abnormalities (Q00-Q99)	925
Chapter 18. Symptoms, Signs and Abnormal Clinical and Laboratory Findings, Not Elsewhere Classified (R00-R99)	945
Chapter 19. Injury, Poisoning and Certain Other Consequences of External Causes (S00-T88)	965
Chapter 20. External Causes of Morbidity (V00-Y99)	1173
Chapter 21. Factors Influencing Health Status and Contact With Health Services (Z00-Z99)	1237
Chapter 22. Codes for Special Purposes (U00-U85)	1273

Appendixes

Appendix A: Valid 3-character ICD-10-CM Codes	Appendixes–1
Appendix B: Pharmacology List 2021	Appendixes–3
Appendix C: Z Codes for Long-Term Drug Use with Associated Drugs	Appendixes–23
Appendix D: Z Codes Only as Principal/First-Listed Diagnosis	Appendixes–26
Appendix E: Skilled Nursing Facility Prospective Payment System Overview	Appendixes–27
Appendix F: PDPM Comorbid Conditions	Appendixes–31
Appendix G: PDPM Return-to-Provider Code List	Appendixes–35
Appendix H: Skilled Nursing Facility Active Diagnosis List	Appendixes–49
Appendix I: Inpatient Rehabilitation Facility Prospective Payment System (PPS) Overview	Appendixes–51
Appendix J: Rehabilitation Impairment Categories (RIC)	Appendixes–58
Appendix K: RIC Comorbid Conditions	Appendixes–63
Appendix L: Coding Issues for Long-Term Care (LTC)	Appendixes–70

Illustrations

Chapter 3. Diseases of the Blood and Blood-forming Organs and Certain Disorders Involving the Immune Mechanism (D50–D89)	Illustrations–1
Red Blood Cells	Illustrations–1
White Blood Cell	Illustrations–1
Platelet	Illustrations–2
Coagulation	Illustrations–2
Spleen Anatomical Location and External Structures	Illustrations–3
Spleen Interior Structures	Illustrations–3

Chapter 4. Endocrine, Nutritional and Metabolic Diseases (E00–E89)	Illustrations–4	Lower Respiratory System	Illustrations–27
Endocrine System	Illustrations–4	Paranasal Sinuses	Illustrations–27
Thyroid	Illustrations–5	Lung Segments	Illustrations–28
Thyroid and Parathyroid Glands	Illustrations–5	Alveoli	Illustrations–28
Pancreas	Illustrations–6	Chapter 11. Diseases of the Digestive System (K00–K95)	Illustrations–29
Anatomy of the Adrenal Gland	Illustrations–6	Digestive System	Illustrations–29
Structure of an Ovary	Illustrations–7	Omentum and Mesentery	Illustrations–30
Testis and Associated Structures	Illustrations–7	Peritoneum and Retroperitoneum ..	Illustrations–30
Thymus	Illustrations–8	Chapter 12. Diseases of the Skin and Subcutaneous Tissue (L00–L99)	Illustrations–31
Chapter 6. Diseases of the Nervous System (G00–G99)	Illustrations–9	Nail Anatomy	Illustrations–31
Brain	Illustrations–9	Skin and Subcutaneous Tissue	Illustrations–31
Cranial Nerves	Illustrations–9	Chapter 13. Diseases of the Musculoskeletal System and Connective Tissue (M00–M99)	Illustrations–32
Peripheral Nervous System	Illustrations–10	Bones and Joints	Illustrations–32
Spinal Cord and Spinal Nerves	Illustrations–11	Shoulder Anterior View	Illustrations–33
Nerve Cell	Illustrations–12	Shoulder Posterior View	Illustrations–33
Chapter 7. Diseases of the Eye and Adnexa (H00–H59)	Illustrations–13	Elbow Anterior View	Illustrations–33
Eye	Illustrations–13	Elbow Posterior View	Illustrations–33
Posterior Pole of Globe/Flow of Aqueous Humor	Illustrations–13	Hand	Illustrations–33
Lacrimal System	Illustrations–14	Hip Anterior View	Illustrations–34
Eye Musculature	Illustrations–14	Hip Posterior View	Illustrations–34
Eyelid Structures	Illustrations–14	Knee Anterior View	Illustrations–34
Chapter 8. Diseases of the Ear and Mastoid Process (H60–H95)	Illustrations–15	Knee Posterior View	Illustrations–34
Ear Anatomy	Illustrations–15	Foot	Illustrations–34
Chapter 9. Diseases of the Circulatory System (I00–I99)	Illustrations–16	Muscles.....	Illustrations–35
Anatomy of the Heart	Illustrations–16	Chapter 14. Diseases of the Genitourinary System (N00–N99)	Illustrations–36
Heart Cross Section	Illustrations–16	Urinary System	Illustrations–36
Heart Valves	Illustrations–17	Male Genitourinary System	Illustrations–37
Heart Conduction System	Illustrations–17	Female Internal Genitalia	Illustrations–37
Coronary Arteries	Illustrations–18	Female Genitourinary Tract Lateral View	Illustrations–37
Arteries	Illustrations–19	Chapter 15. Pregnancy, Childbirth and the Puerperium (O00–O9A)	Illustrations–38
Veins	Illustrations–20	Term Pregnancy – Single Gestation	Illustrations–38
Internal Carotid and Vertebral Arteries and Branches	Illustrations–21	Twin Gestation–Dichorionic–Diamniotic (DI-DI)	Illustrations–38
External Carotid Artery and Branches	Illustrations–21	Twin Gestation–Monochorionic–Diamniotic (MO-DI)	Illustrations–39
Branches of Abdominal Aorta	Illustrations–22	Twin Gestation–Monochorionic–Monoamniotic (MO-MO)	Illustrations–39
Portal Venous Circulation	Illustrations–22	Chapter 19. Injury, Poisoning and Certain Other Consequences of External Causes (S00–T88)	Illustrations–40
Lymphatic System	Illustrations–23	Types of Fractures	Illustrations–40
Axillary Lymph Nodes	Illustrations–24	Salter-Harris Fracture Types	Illustrations–40
Lymphatic System of Head and Neck	Illustrations–24		
Lymphatic Capillaries	Illustrations–25		
Lymphatic Drainage	Illustrations–25		
Chapter 10. Diseases of the Respiratory System (J00–J99)	Illustrations–26		
Respiratory System	Illustrations–26		
Upper Respiratory System	Illustrations–27		

Neoplasm Table

The Neoplasm Table is arranged in alphabetic order by anatomical site. Codes are then listed in individual columns based upon the histological behavior (malignant, in situ, benign, uncertain, or unspecified) of the neoplasm.

Table of Drugs and Chemicals

The Table of Drugs and Chemicals is arranged in alphabetic order by the specific drug or chemical name. Codes are listed in individual columns based upon the associated intent (poisoning, adverse effect, or underdosing).

External Causes Index

The External Causes Index is arranged in alphabetic order by main terms that describe the cause, the intent, the place of occurrence, the activity, and the status of the patient at the time the injury occurred or health condition arose.

Index Notations

With

The word “with” or “in” should be interpreted to mean “associated with” or “due to.” The classification presumes a causal relationship between the two conditions linked by these terms in the index. These conditions should be coded as related even in the absence of provider documentation explicitly linking them unless the documentation clearly states the conditions are unrelated or when another guideline specifically requires a documented linkage between two conditions (e.g., the sepsis guideline for “acute organ dysfunction that is not clearly associated with the sepsis”). For conditions not specifically linked by these relational terms in the classification or when a guideline requires explicit documentation of a linkage between two conditions, provider documentation must link the conditions to code them as related.

The word “with” in the index is sequenced immediately following the main term, not in alphabetical order.

Dermatopolymyositis M33.90

with

myopathy M33.92

respiratory involvement M33.91

specified organ involvement NEC M33.99

in neoplastic disease — *see also* Neoplasm D49.9 [M36.0]

See

When the instruction “see” follows a term in the index, it indicates that another term must be referenced to locate the correct code.

Hematomperitoneum — *see* Hemoperitoneum

See Also

The instructional note “see also” simply provides alternative terms the coder may reference that may be useful in determining the correct code but are not necessary to follow if the main term supplies the appropriate code.

Hematuria — *see also* Hemaglobinuria malarial B50.8

Default Codes

In the index, the default code is the code listed next to the main term and represents the condition most commonly associated with that main term. This code may be assigned when documentation does not support reporting a more specific code. Alternatively, it may provide an unspecified code for the condition.

Headache R51

allergic NEC G44.89

associated with sexual activity G44.82

chronic daily R51

Parentheses

Parentheses in the indexes enclose nonessential modifiers, supplementary words that may be present or absent in the statement of a disease without affecting the code.

Pseudomeningocele (cerebral) (infective) (post-traumatic) G96.19 postprocedural (spinal) G97.82

Brackets

ICD-10-CM has a coding convention addressing code assignment for manifestations that occur as a result of an underlying condition. This convention requires the underlying condition to be sequenced first, followed by the code or codes for the associated manifestation. In the index, italicized codes in brackets identify manifestation codes.

Polyneuropathy (peripheral) G62.9

alcoholic G62.1

amyloid (Portuguese) E85.1 [G63]

transthyretin-related (ATTR) familial E85.1 [G63]

Shaded Guides

Exclusive vertical shaded guides in the Index to Diseases and Injuries and External Causes Index help the user easily follow the indent levels for the subentries under a main term. Sequencing rules may apply depending on the level of indent for separate subentries.

Hemicrania

congenital malformation Q00.0

continua G44.51

meaning migraine — *see also* Migraine G43.909

paroxysmal G44.039

chronic G44.049

intractable G44.041

not intractable G44.049

episodic G44.039

intractable G44.031

not intractable G44.039

intractable G44.031

not intractable G44.039

Following References

The Index to Diseases and Injuries includes following references to assist in locating out-of-sequence codes in the tabular list. Out-of-sequence codes contain an alphabetic character (letter) in the third- or 4th-character position. These codes are placed according to the classification rules — according to condition — not according to alphabetic or numeric sequencing rules.

Carcinoma (malignant) — *see also* Neoplasm, by site, malignant

neuroendocrine — *see also* Tumor, neuroendocrine

high grade, any site C7A.1 (*following* C75)

poorly differentiated, any site C7A.1 (*following* C75)

Additional Character Required

The Index to Diseases and Injuries, Neoplasm Table, and External Causes Index provide an icon after certain codes to signify to the user that additional characters are required to make the code valid. The tabular list should be consulted for appropriate character selection.

Fall, falling (accidental) W19 ✓

building W20.1 ✓

Tabular List of Diseases

ICD-10-CM codes and descriptions are arranged numerically within the tabular list of diseases with 19 separate chapters providing codes associated with a particular body system or nature of injury or disease. There is also a chapter providing codes for external causes of an injury or health conditions and finally a chapter for codes that address encounters with healthcare facilities for circumstances other than a disease or injury.

Code and Code Descriptions

ICD-10-CM is an alphanumeric classification system that contains categories, subcategories, and valid codes. The first character is always a letter with any additional characters represented by either a letter or number. A three-character category without further subclassification is equivalent to a valid three-character code. Valid codes may be three, four, five, six, or seven characters in length, with each level of subdivision after a three-character category representing a subcategory. The final level of subdivision is a valid code.

Boldface

Boldface type is used for all codes and descriptions in the tabular list.

Italics

Italicized type is used to identify manifestation codes, those codes that should not be reported as first-listed diagnoses.

Deleted Text

~~Strikethrough~~ on a code and code description indicates a deletion from the classification for the current year.

Key Word

Green font is used throughout the Tabular List of Diseases to differentiate the key words that appear in similar code descriptions in a given category or subcategory. The key word convention is used only in those categories in which there are multiple codes with very similar descriptions with only a few words that differentiate them.

For example, refer to the list of codes below from category H55:

✓4 th	H55 Nystagmus and other irregular eye movements
✓5 th	H55.0 Nystagmus
	H55.00 Unspecified nystagmus
	H55.01 Congenital nystagmus
	H55.02 Latent nystagmus
	H55.03 Visual deprivation nystagmus
	H55.04 Dissociated nystagmus
	H55.09 Other forms of nystagmus

The portion of the code description that appears in **green font** in the tabular list helps the coder quickly identify the key terms and the correct code. This convention is especially useful when the codes describe laterality, such as the following codes from subcategory H40.22:

✓6 th	H40.22 Chronic angle-closure glaucoma
	Chronic primary angle-closure glaucoma
✓7 th	H40.221 Chronic angle-closure glaucoma, right eye
✓7 th	H40.222 Chronic angle-closure glaucoma, left eye
✓7 th	H40.223 Chronic angle-closure glaucoma, bilateral
✓7 th	H40.229 Chronic angle-closure glaucoma, unspecified eye

Tabular Notations

Official parenthetical notes as well as Optum360's supplementary notations are provided at the chapter, code block, category, subcategory, and individual code level to help the user assign proper codes. The information in the notation can apply to one or more codes depending on where the citation is placed.

Official Notations

Includes Notes

The word **INCLUDES** appears immediately under certain categories to further define, clarify, or give examples of the content of a code category.

Inclusion Terms

Lists of inclusion terms are included under certain codes. These terms indicate some of the conditions for which that code number may be used. Inclusion terms may be synonyms with the code title, or, in the case of "other specified" codes, the terms may also provide a list of various conditions included within a classification code. The inclusion terms are not exhaustive. The index may provide additional terms that may also be assigned to a given code.

Excludes Notes

ICD-10-CM has two types of excludes notes. Each note has a different definition for use. However, they are similar in that they both indicate that codes excluded from each other are independent of each other.

Excludes 1

An **EXCLUDES 1** note is a "pure" excludes. It means "NOT CODED HERE!" An Excludes 1 note indicates mutually exclusive codes: two conditions that cannot be reported together. An Excludes 1 note indicates that the code excluded should never be used at the same time as the code above the Excludes 1 note. An Excludes 1 is used when two conditions cannot occur together, such as a congenital form versus an acquired form of the same condition.

An exception to the Excludes 1 definition is when the two conditions are unrelated to each other. If it is not clear whether the two conditions involving an Excludes 1 note are related or not, query the provider. For example, code F45.8 Other somatoform disorders, has an Excludes 1 note for "sleep related teeth grinding (G47.63)" because "teeth grinding" is an inclusion term under F45.8. Only one of these two codes should be assigned for teeth grinding. However, psychogenic dysmenorrhea is also an inclusion term under F45.8, and a patient could have both this condition and sleep-related teeth grinding. In this case, the two conditions are clearly unrelated to each other, so it would be appropriate to report F45.8 and G47.63 together.

Excludes 2

An **EXCLUDES 2** note means "NOT INCLUDED HERE." An Excludes 2 note indicates that although the excluded condition is not part of the condition it is excluded from, a patient may have both conditions at the same time. Therefore, when an Excludes 2 note appears under a code, it may be acceptable to use both the code and the excluded code together if supported by the medical documentation.

Note

The term "NOTE" appears as an icon and precedes the instructional information. These notes function as alerts to highlight coding instructions within the text.

Code First/Use additional code

These instructional notes provide sequencing instruction. They may appear independently of each other or to designate certain etiology/manifestation paired codes. These instructions signal the coder that an additional code should be reported to provide a more complete picture of that diagnosis.

In etiology/manifestation coding, ICD-10-CM requires the underlying condition to be sequenced first, followed by the manifestation. In these situations, codes with "In diseases classified elsewhere" in the code description are never permitted as a first-listed or principal diagnosis code and must be sequenced following the underlying condition code.

Code Also

A "code also" note alerts the coder that more than one code may be required to fully describe the condition. The sequencing depends on the

Appendixes

The additional resources described below have been included as appendixes for this book. These resources further instruct the professional coder on the appropriate application of the ICD-10-CM code set.

Appendix A: Valid 3-character ICD-10-CM Codes

The user may consult this table to confirm that no further specificity, such as the use of 4th, 5th, 6th, or 7th characters or placeholders (X), is necessary. All ICD-10-CM codes that are valid at the three-character level are listed.

Appendix B: Pharmacology List 2020

This reference is a comprehensive but not all-inclusive list of pharmacological agents used to treat acute and/or chronic conditions. Drugs are listed in alphabetical order by their brand and/or generic names along with their drug action and indications for which they may commonly be prescribed. Some drugs have also been mapped to their appropriate Z code for long-term drug use.

Appendix C: Z Codes for Long-Term Drug Use with Associated Drugs

This resource correlates Z codes that are used to identify current long-term drug use with a list of drugs that are typically categorized to that class of drug.

Note: These tables are not all-inclusive but list some of the more commonly used drugs.

Appendix D: Z Codes Only as Principal/First-Listed Diagnosis

Chapter 21, "Factors Influencing Health Status and Contact with Health Services," provides codes to deal with encounters for circumstances other than a disease or injury. Many of these codes may be reported *only* as the principal/first-listed diagnosis. This resource lists all of these codes in one table for quick and easy reference to ensure accurate reporting.

Appendix E: Skilled Nursing Facility Prospective Payment System Overview

To better classify residents for payment purposes and to ensure that residents' care needs are addressed, Medicare has developed the Patient-Driven Payment Model (PDPM), which will replace the current RUG-IV classification system. Payments will predominantly be based on clinical characteristics instead of service provision. This resource describes the PDPM and its elements, as well as how this classification system will be used within the skilled nursing facility prospective payment system (SNF PPS).

Appendix F: PDPM Comorbid Conditions

This resource provides a comprehensive list of the ICD-10-CM codes that are considered comorbid conditions for the non-therapy ancillary (NTA) and the speech-language pathology (SLP) components of the PDPM.

Appendix G: PDPM Return-to-Provider Code List

This resource provides a comprehensive list of the ICD-10-CM codes that are *not* acceptable as the primary reason for SNF care. When one of these codes is listed as the primary diagnosis code on the minimum data set (MDS), the MDS should be returned to the provider to select an appropriate ICD-10-CM diagnosis code.

Appendix H: Skilled Nursing Facility Active Diagnosis List

This resource includes the minimum data set (MDS) data elements that capture the relevant diagnostic or surgical information needed to calculate one or more of the components in PDPM.

Appendix I: Inpatient Rehabilitation Facility Prospective Payment System (PPS) Overview

The inpatient rehabilitation facility prospective payment system (IRF PPS) provides payment rates for rehabilitation facilities providing post-acute care for patients that require additional services to restore the patient's ability to live and work after a disabling injury or illness. This resource summarizes the revisions to the Quality Reporting Program, changes to the IRF-PAI instrument, IRF requirements, and the proposed changes to the IRF PPS for FY 2019.

Appendix J: Rehabilitation Impairment Categories (RIC)

This resource provides a reference of all rehabilitation impairment categories (RIC) and the ICD-10-CM codes associated with each RIC.

Appendix K: RIC Comorbid Conditions

Certain conditions when listed as a secondary diagnosis during a rehabilitation admission may qualify that stay for payment adjustment. All diagnoses that are considered comorbid conditions are identified in this resource in addition to any rehabilitation categories from which the comorbid condition would be exempt.

Appendix L: Coding Issues for Long-Term Care (LTC)

This resource identifies coding and reporting issues that may be encountered in the long-term (post-acute) care setting. Specific case scenarios along with the applicable ICD-10-CM code(s) and rationales are provided.

Illustrations

This section includes illustrations of normal anatomy with ICD-10-CM-specific terminology.

Admission

Admission — *continued*
 fitting — *continued*
 device — *continued*
 prosthetic — *continued*
 dental Z46.3
 eye Z44.2 ■
 substitution
 auditory Z46.2
 implanted — *see* Admission, adjustment, device, implanted, hearing device
 nervous system Z46.2
 implanted — *see* Admission, adjustment, device, implanted, nervous system
 visual Z46.2
 implanted Z45.31
 hearing aid Z46.1
 ileostomy device Z46.89
 intestinal appliance or device NEC Z46.89
 neuromodulator (brain) (peripheral nerve) (spinal cord) Z46.2
 implanted Z45.42
 orthodontic device Z46.4
 orthopedic device (brace) (cast) (shoes) Z46.89
 prosthesis Z44.9
 arm — *see* Admission, adjustment, artificial, arm
 breast Z44.3 ■
 dental Z46.3
 eye Z44.2 ■
 leg — *see* Admission, adjustment, artificial, leg
 specified type NEC Z44.8
 spectacles Z46.0
 follow-up examination Z09
 intrauterine device management Z30.431
 initial prescription Z30.014
 mental health evaluation Z00.8
 requested by authority Z04.6
 observation — *see* Observation
 Papanicolaou smear, cervix Z12.4
 for suspected malignant neoplasm Z12.4
 plastic and reconstructive surgery following medical procedure or healed injury NEC Z42.8
 plastic surgery, cosmetic NEC Z41.1
 postpartum observation
 immediately after delivery Z39.0
 routine follow-up Z39.2
 poststerilization (for restoration) Z31.0
 aftercare Z31.42
 preoperative management Z31.9
 prophylactic (measure) — *see also* Encounter, prophylactic measures
 organ removal Z40.00
 breast Z40.01
 fallopian tube(s) Z40.03
 with ovary(s) Z40.02
 ovary(s) Z40.02
 specified organ NEC Z40.09
 testes Z40.09
 vaccination Z23
 psychiatric examination (general) Z00.8
 requested by authority Z04.6
 radiation therapy (antineoplastic) Z51.0
 reconstructive surgery following medical procedure or healed injury NEC Z42.8
 removal of
 cystostomy catheter Z43.5
 drains Z48.03
 dressing (nonsurgical) Z48.00
 implantable subdermal contraceptive Z30.46
 intrauterine contraceptive device Z30.432
 neuromodulator (brain) (peripheral nerve) (spinal cord) Z46.2
 implanted Z45.42
 staples Z48.02
 surgical dressing Z48.01
 sutures Z48.02
 ureteral stent Z46.6
 respirator [ventilator] use during power failure Z99.12
 restoration of organ continuity (poststerilization) Z31.0
 aftercare Z31.42
 sensitivity test — *see also* Test, skin
 allergy NEC Z01.82
 Mantoux Z11.1
 tuboplasty following previous sterilization Z31.0
 aftercare Z31.42
 vasoplasty following previous sterilization Z31.0
 aftercare Z31.42
 vision examination Z01.00
 with abnormal findings Z01.01

Admission — *continued*
 vision examination — *continued*
 following failed vision screening Z01.020
 with abnormal findings Z01.021
 infant or child (over 28 days old) Z00.129
 with abnormal findings Z00.121
 waiting period for admission to other facility Z75.1
Adnexitis (suppurative) — *see* Salpingo-oophoritis
Adolescent X-linked adrenoleukodystrophy E71.521
Adrenal (gland) — *see* condition
Adrenalism, tuberculous A18.7
Adrenitis, adrenitis E27.8
 autoimmune E27.1
 meningococcal, hemorrhagic A39.1
Adrenarche, premature E27.0
Adrenocortical syndrome — *see* Cushing's, syndrome
Adrenogenital syndrome E25.9
 acquired E25.8
 congenital E25.0
 salt loss E25.0
Adrenogenitalism, congenital E25.0
Adrenoleukodystrophy E71.529
 neonatal E71.511
 X-linked E71.529
 Addison only phenotype E71.528
 Addison-Schilder E71.528
 adolescent E71.521
 adrenomyeloneuropathy E71.522
 childhood cerebral E71.520
 other specified E71.528
Adrenomyeloneuropathy E71.522
Adventitious bursa — *see* Bursopathy, specified type
 NEC
Adverse effect — *see* Table of Drugs and Chemicals, categories T36-T50, with 6th character 5
Advice — *see* Counseling
Adynamia (episodic) (hereditary) (periodic) G72.3
Aeration lung imperfect, newborn — *see* Atelectasis
Aerobullosis T70.3 ■
Aerocele — *see* Embolism, air
Aerodermatitis
 subcutaneous (traumatic) T79.7 ■
Aerodontalgia T70.29 ■
Aeroembolism T70.3 ■
Aerogenes capsulatus infection A48.0
Aero-otitis media T70.0 ■
Aerophagy, aerophagia (psychogenic) F45.8
Aerophobia F40.228
Aerosinusitis T70.1 ■
Aerotitis T70.0 ■
Affection — *see* Disease
Afibrinogenemia — *see also* Defect, coagulation D68.8
 acquired D65
 congenital D68.2
 following ectopic or molar pregnancy O08.1
 in abortion — *see* Abortion, by type, complicated by, afibrinogenemia
 puerperal O72.3
African
 sleeping sickness B56.9
 tick fever A68.1
 trypanosomiasis B56.9
 gambian B56.0
 rhodesian B56.1
Aftercare — *see also* Care Z51.89
 following surgery (for) (on)
 amputation Z47.81
 attention to
 drains Z48.03
 dressings (nonsurgical) Z48.00
 surgical Z48.01
 sutures Z48.02
 circulatory system Z48.812
 delayed (planned) wound closure Z48.1
 digestive system Z48.815
 explantation of joint prosthesis (staged procedure)
 hip Z47.32
 knee Z47.33
 shoulder Z47.31
 genitourinary system Z48.816
 joint replacement Z47.1
 neoplasm Z48.3
 nervous system Z48.811
 oral cavity Z48.814
 organ transplant
 bone marrow Z48.290
 heart Z48.21
 heart-lung Z48.280

Aftercare — *continued*
 following surgery — *continued*
 organ transplant — *continued*
 kidney Z48.22
 liver Z48.23
 lung Z48.24
 multiple organs NEC Z48.288
 specified NEC Z48.298
 orthopedic NEC Z47.89
 planned wound closure Z48.1
 removal of internal fixation device Z47.2
 respiratory system Z48.813
 scoliosis Z47.82
 sense organs Z48.810
 skin and subcutaneous tissue Z48.817
 specified body system
 circulatory Z48.812
 digestive Z48.815
 genitourinary Z48.816
 nervous Z48.811
 oral cavity Z48.814
 respiratory Z48.813
 sense organs Z48.810
 skin and subcutaneous tissue Z48.817
 teeth Z48.814
 specified NEC Z48.89
 spinal Z47.89
 teeth Z48.814
 fracture — *code to* fracture with seventh character D
 involving
 removal of
 drains Z48.03
 dressings (nonsurgical) Z48.00
 staples Z48.02
 surgical dressings Z48.01
 sutures Z48.02
 neuromodulator (brain) (peripheral nerve) (spinal cord) Z46.2
 implanted Z45.42
 orthopedic NEC Z47.89
 postprocedural — *see* Aftercare, following surgery
After-cataract — *see* Cataract, secondary
Agalactia (primary) O92.3
 elective, secondary or therapeutic O92.5
Agammaglobulinemia (acquired (secondary) (nonfamilial)) D80.1
 with
 immunoglobulin-bearing B-lymphocytes D80.1
 lymphopenia D81.9
 autosomal recessive (Swiss type) D80.0
 Bruton's X-linked D80.0
 common variable (CVAgamma) D80.1
 congenital sex-linked D80.0
 hereditary D80.0
 lymphopenic D81.9
 Swiss type (autosomal recessive) D80.0
 X-linked (with growth hormone deficiency) (Bruton) D80.0
Aganglionosis (bowel) (colon) Q43.1
Age (old) — *see* Senility
Agenesis
 adrenal (gland) Q89.1
 alimentary tract (complete) (partial) NEC Q45.8
 upper Q40.8
 anus, anal (canal) Q42.3
 with fistula Q42.2
 aorta Q25.41
 appendix Q42.8
 arm (complete) Q71.0- ■
 with hand present Q71.1- ■
 artery (peripheral) Q27.9
 brain Q28.3
 coronary Q24.5
 pulmonary Q25.79
 specified NEC Q27.8
 umbilical Q27.0
 auditory (canal) (external) Q16.1
 auricle (ear) Q16.0
 bile duct or passage Q44.5
 bladder Q64.5
 bone Q79.9
 brain Q00.0
 part of Q04.3
 breast (with nipple present) Q83.8
 with absent nipple Q83.0
 bronchus Q32.4
 canaliculus lacrimalis Q10.4
 carpus — *see* Agenesis, hand

ICD-10-CM 2021

Sodium

ICD-10-CM 2021

	Poisoning, Accidental (unintentional)	Poisoning, Intentional Self-harm	Poisoning, Assault	Poisoning, Undetermined	Adverse Effect	Under-dosing		Poisoning, Accidental (unintentional)	Poisoning, Intentional Self-harm	Poisoning, Assault	Poisoning, Undetermined	Adverse Effect	Under-dosing
Substance							Substance						
Sodium — continued							Sporostacin	T49.0X1	T49.0X2	T49.0X3	T49.0X4	T49.0X5	T49.0X6
salt NEC	T50.3X1	T50.3X2	T50.3X3	T50.3X4	T50.3X5	T50.3X6	Spray (aerosol)	T65.91	T65.92	T65.93	T65.94	—	—
selenate	T60.2X1	T60.2X2	T60.2X3	T60.2X4	—	—	cosmetic	T65.891	T65.892	T65.893	T65.894	—	—
stibogluconate	T37.3X1	T37.3X2	T37.3X3	T37.3X4	T37.3X5	T37.3X6	medicinal NEC	T50.901	T50.902	T50.903	T50.904	T50.905	T50.906
sulfate	T47.4X1	T47.4X2	T47.4X3	T47.4X4	T47.4X5	T47.4X6	pesticides — see Pesticides						
sulfoxone	T37.1X1	T37.1X2	T37.1X3	T37.1X4	T37.1X5	T37.1X6	specified content — see specific substance						
tetradecyl sulfate	T46.8X1	T46.8X2	T46.8X3	T46.8X4	T46.8X5	T46.8X6	Spurge flax	T62.2X1	T62.2X2	T62.2X3	T62.2X4	—	—
thiopental	T41.1X1	T41.1X2	T41.1X3	T41.1X4	T41.1X5	T41.1X6	Spurges	T62.2X1	T62.2X2	T62.2X3	T62.2X4	—	—
thiosalicylate	T39.0X1	T39.0X2	T39.0X3	T39.0X4	T39.0X5	T39.0X6	Sputum viscosity-lowering drug	T48.4X1	T48.4X2	T48.4X3	T48.4X4	T48.4X5	T48.4X6
thiosulfate	T50.6X1	T50.6X2	T50.6X3	T50.6X4	T50.6X5	T50.6X6	Squill	T46.0X1	T46.0X2	T46.0X3	T46.0X4	T46.0X5	T46.0X6
tolbutamide	T38.3X1	T38.3X2	T38.3X3	T38.3X4	T38.3X5	T38.3X6	rat poison	T60.4X1	T60.4X2	T60.4X3	T60.4X4	—	—
(L)-triiodothyronine	T38.1X1	T38.1X2	T38.1X3	T38.1X4	T38.1X5	T38.1X6	Squirting cucumber	T47.2X1	T47.2X2	T47.2X3	T47.2X4	T47.2X5	T47.2X6
tyropanoate	T50.8X1	T50.8X2	T50.8X3	T50.8X4	T50.8X5	T50.8X6	(cathartic)						
valproate	T42.6X1	T42.6X2	T42.6X3	T42.6X4	T42.6X5	T42.6X6	Stains	T65.6X1	T65.6X2	T65.6X3	T65.6X4	—	—
versenate	T50.6X1	T50.6X2	T50.6X3	T50.6X4	T50.6X5	T50.6X6	Stannous fluoride	T49.7X1	T49.7X2	T49.7X3	T49.7X4	T49.7X5	T49.7X6
Sodium-free salt	T50.901	T50.902	T50.903	T50.904	T50.905	T50.906	Stanolone	T38.7X1	T38.7X2	T38.7X3	T38.7X4	T38.7X5	T38.7X6
Sodium-removing resin	T50.3X1	T50.3X2	T50.3X3	T50.3X4	T50.3X5	T50.3X6	Stanozolol	T38.7X1	T38.7X2	T38.7X3	T38.7X4	T38.7X5	T38.7X6
Soft soap	T55.0X1	T55.0X2	T55.0X3	T55.0X4	—	—	Staphisagria or stavesacre	T49.0X1	T49.0X2	T49.0X3	T49.0X4	T49.0X5	T49.0X6
Solanine	T62.2X1	T62.2X2	T62.2X3	T62.2X4	—	—	(pediculicide)						
berries	T62.1X1	T62.1X2	T62.1X3	T62.1X4	—	—	Starch	T50.901	T50.902	T50.903	T50.904	T50.905	T50.906
Solapson	T37.1X1	T37.1X2	T37.1X3	T37.1X4	T37.1X5	T37.1X6	Stelazine	T43.3X1	T43.3X2	T43.3X3	T43.3X4	T43.3X5	T43.3X6
Solar lotion	T49.3X1	T49.3X2	T49.3X3	T49.3X4	T49.3X5	T49.3X6	Stemetil	T43.3X1	T43.3X2	T43.3X3	T43.3X4	T43.3X5	T43.3X6
Solasulfone	T37.1X1	T37.1X2	T37.1X3	T37.1X4	T37.1X5	T37.1X6	Stepromin	T48.4X1	T48.4X2	T48.4X3	T48.4X4	T48.4X5	T48.4X6
Soldering fluid	T65.891	T65.892	T65.893	T65.894	—	—	Sterculia	T47.4X1	T47.4X2	T47.4X3	T47.4X4	T47.4X5	T47.4X6
Solid substance	T65.91	T65.92	T65.93	T65.94	—	—	Sternutator gas	T59.8X1	T59.8X2	T59.8X3	T59.8X4	—	—
specified NEC	T65.891	T65.892	T65.893	T65.894	—	—	Steroid	T38.0X1	T38.0X2	T38.0X3	T38.0X4	T38.0X5	T38.0X6
Solvent, industrial NEC	T52.91	T52.92	T52.93	T52.94	—	—	anabolic	T38.7X1	T38.7X2	T38.7X3	T38.7X4	T38.7X5	T38.7X6
naphtha	T52.0X1	T52.0X2	T52.0X3	T52.0X4	—	—	androgenic	T38.7X1	T38.7X2	T38.7X3	T38.7X4	T38.7X5	T38.7X6
petroleum	T52.0X1	T52.0X2	T52.0X3	T52.0X4	—	—	antineoplastic, hormone	T38.7X1	T38.7X2	T38.7X3	T38.7X4	T38.7X5	T38.7X6
specified NEC	T52.8X1	T52.8X2	T52.8X3	T52.8X4	—	—	estrogen	T38.5X1	T38.5X2	T38.5X3	T38.5X4	T38.5X5	T38.5X6
Soma	T42.8X1	T42.8X2	T42.8X3	T42.8X4	T42.8X5	T42.8X6	ENT agent	T49.6X1	T49.6X2	T49.6X3	T49.6X4	T49.6X5	T49.6X6
Somatorelin	T38.891	T38.892	T38.893	T38.894	T38.895	T38.896	ophthalmic preparation	T49.5X1	T49.5X2	T49.5X3	T49.5X4	T49.5X5	T49.5X6
Somatostatin	T38.991	T38.992	T38.993	T38.994	T38.995	T38.996	topical NEC	T49.0X1	T49.0X2	T49.0X3	T49.0X4	T49.0X5	T49.0X6
Somatotropin	T38.811	T38.812	T38.813	T38.814	T38.815	T38.816	Stibine	T56.891	T56.892	T56.893	T56.894	—	—
Somatrem	T38.811	T38.812	T38.813	T38.814	T38.815	T38.816	Stibogluconate	T37.3X1	T37.3X2	T37.3X3	T37.3X4	T37.3X5	T37.3X6
Somatropin	T38.811	T38.812	T38.813	T38.814	T38.815	T38.816	Stibophen	T37.4X1	T37.4X2	T37.4X3	T37.4X4	T37.4X5	T37.4X6
Sominex	T45.0X1	T45.0X2	T45.0X3	T45.0X4	T45.0X5	T45.0X6	Stilbamidine (isetionate)	T37.3X1	T37.3X2	T37.3X3	T37.3X4	T37.3X5	T37.3X6
Somnos	T42.6X1	T42.6X2	T42.6X3	T42.6X4	T42.6X5	T42.6X6	Stilbestrol	T38.5X1	T38.5X2	T38.5X3	T38.5X4	T38.5X5	T38.5X6
Somonal	T42.3X1	T42.3X2	T42.3X3	T42.3X4	T42.3X5	T42.3X6	Stilboestrol	T38.5X1	T38.5X2	T38.5X3	T38.5X4	T38.5X5	T38.5X6
Soneryl	T42.3X1	T42.3X2	T42.3X3	T42.3X4	T42.3X5	T42.3X6	central nervous system — see also Psychostimulant	T43.601	T43.602	T43.603	T43.604	T43.605	T43.606
Soothing syrup	T50.901	T50.902	T50.903	T50.904	T50.905	T50.906	analeptics	T50.7X1	T50.7X2	T50.7X3	T50.7X4	T50.7X5	T50.7X6
Sopor	T42.6X1	T42.6X2	T42.6X3	T42.6X4	T42.6X5	T42.6X6	opiate antagonist	T50.7X1	T50.7X2	T50.7X3	T50.7X4	T50.7X5	T50.7X6
Soporific	T42.71	T42.72	T42.73	T42.74	T42.75	T42.76	psychotherapeutic NEC — see also Psychotherapeutic drug	T43.601	T43.602	T43.603	T43.604	T43.605	T43.606
Soporific drug	T42.71	T42.72	T42.73	T42.74	T42.75	T42.76	specified NEC	T43.691	T43.692	T43.693	T43.694	T43.695	T43.696
specified type NEC	T42.6X1	T42.6X2	T42.6X3	T42.6X4	T42.6X5	T42.6X6	respiratory	T48.901	T48.902	T48.903	T48.904	T48.905	T48.906
Sorbide nitrate	T46.3X1	T46.3X2	T46.3X3	T46.3X4	T46.3X5	T46.3X6	Stone-dissolving drug	T50.901	T50.902	T50.903	T50.904	T50.905	T50.906
Sorbitol	T47.4X1	T47.4X2	T47.4X3	T47.4X4	T47.4X5	T47.4X6	Storage battery (cells)	T54.2X1	T54.2X2	T54.2X3	T54.2X4	—	—
Sotalol	T44.7X1	T44.7X2	T44.7X3	T44.7X4	T44.7X5	T44.7X6	(acid)						
Sotradecol	T46.8X1	T46.8X2	T46.8X3	T46.8X4	T46.8X5	T46.8X6	Stovaine	T41.3X1	T41.3X2	T41.3X3	T41.3X4	T41.3X5	T41.3X6
Soysterol	T46.6X1	T46.6X2	T46.6X3	T46.6X4	T46.6X5	T46.6X6	infiltration (subcutaneous)	T41.3X1	T41.3X2	T41.3X3	T41.3X4	T41.3X5	T41.3X6
Spancoline	T44.3X1	T44.3X2	T44.3X3	T44.3X4	T44.3X5	T44.3X6	nerve block (peripheral)	T41.3X1	T41.3X2	T41.3X3	T41.3X4	T41.3X5	T41.3X6
Spanish fly	T49.8X1	T49.8X2	T49.8X3	T49.8X4	T49.8X5	T49.8X6	(plexus)						
Sparine	T43.3X1	T43.3X2	T43.3X3	T43.3X4	T43.3X5	T43.3X6	spinal	T41.3X1	T41.3X2	T41.3X3	T41.3X4	T41.3X5	T41.3X6
Sparteine	T48.0X1	T48.0X2	T48.0X3	T48.0X4	T48.0X5	T48.0X6	topical (surface)	T37.8X1	T37.8X2	T37.8X3	T37.8X4	T37.8X5	T37.8X6
Spasmolytic							Stovarsal						
anticholinergics	T44.3X1	T44.3X2	T44.3X3	T44.3X4	T44.3X5	T44.3X6	Stove gas — see Gas, stove						
autonomic	T44.3X1	T44.3X2	T44.3X3	T44.3X4	T44.3X5	T44.3X6	Stoxil	T49.5X1	T49.5X2	T49.5X3	T49.5X4	T49.5X5	T49.5X6
bronchial NEC	T48.6X1	T48.6X2	T48.6X3	T48.6X4	T48.6X5	T48.6X6	Stramonium	T48.6X1	T48.6X2	T48.6X3	T48.6X4	T48.6X5	T48.6X6
quaternary ammonium	T44.3X1	T44.3X2	T44.3X3	T44.3X4	T44.3X5	T44.3X6	natural state	T62.2X1	T62.2X2	T62.2X3	T62.2X4	—	—
skeletal muscle NEC	T48.1X1	T48.1X2	T48.1X3	T48.1X4	T48.1X5	T48.1X6	Streptodornase	T45.3X1	T45.3X2	T45.3X3	T45.3X4	T45.3X5	T45.3X6
Spectinomycin	T36.5X1	T36.5X2	T36.5X3	T36.5X4	T36.5X5	T36.5X6	Streptoduocin	T36.5X1	T36.5X2	T36.5X3	T36.5X4	T36.5X5	T36.5X6
Speed	T43.621	T43.622	T43.623	T43.624	T43.625	T43.626	Streptokinase	T45.611	T45.612	T45.613	T45.614	T45.615	T45.616
Spermicide	T49.8X1	T49.8X2	T49.8X3	T49.8X4	T49.8X5	T49.8X6	Streptomycin (derivative)	T36.5X1	T36.5X2	T36.5X3	T36.5X4	T36.5X5	T36.5X6
Spider (bite) (venom)	T63.391	T63.392	T63.393	T63.394	—	—	Streptonivicin	T36.5X1	T36.5X2	T36.5X3	T36.5X4	T36.5X5	T36.5X6
antivenin	T50.211	T50.212	T50.213	T50.214	T50.215	T50.216	Streptovarycin	T36.5X1	T36.5X2	T36.5X3	T36.5X4	T36.5X5	T36.5X6
Spigelia (root)	T37.4X1	T37.4X2	T37.4X3	T37.4X4	T37.4X5	T37.4X6	Streptozocin	T45.1X1	T45.1X2	T45.1X3	T45.1X4	T45.1X5	T45.1X6
Spindle inactivator	T50.4X1	T50.4X2	T50.4X3	T50.4X4	T50.4X5	T50.4X6	Streptozotocin	T45.1X1	T45.1X2	T45.1X3	T45.1X4	T45.1X5	T45.1X6
Spiperone	T43.4X1	T43.4X2	T43.4X3	T43.4X4	T43.4X5	T43.4X6	Stripper (paint) (solvent)	T52.8X1	T52.8X2	T52.8X3	T52.8X4	—	—
Spiramycin	T36.3X1	T36.3X2	T36.3X3	T36.3X4	T36.3X5	T36.3X6	Strobane	T60.1X1	T60.1X2	T60.1X3	T60.1X4	—	—
Spirapril	T46.4X1	T46.4X2	T46.4X3	T46.4X4	T46.4X5	T46.4X6	Strofantina	T46.0X1	T46.0X2	T46.0X3	T46.0X4	T46.0X5	T46.0X6
Spirilene	T43.591	T43.592	T43.593	T43.594	T43.595	T43.596	Strophanthin (g) (k)	T46.0X1	T46.0X2	T46.0X3	T46.0X4	T46.0X5	T46.0X6
Spirit(s) (neutral) NEC	T51.0X1	T51.0X2	T51.0X3	T51.0X4	—	—	Strophanthus	T46.0X1	T46.0X2	T46.0X3	T46.0X4	T46.0X5	T46.0X6
beverage	T51.0X1	T51.0X2	T51.0X3	T51.0X4	—	—	Strophantin	T46.0X1	T46.0X2	T46.0X3	T46.0X4	T46.0X5	T46.0X6
industrial	T51.0X1	T51.0X2	T51.0X3	T51.0X4	—	—	Strophantin-g	T46.0X1	T46.0X2	T46.0X3	T46.0X4	T46.0X5	T46.0X6
mineral	T52.0X1	T52.0X2	T52.0X3	T52.0X4	—	—	Strychnine (nonmedicinal)	T65.1X1	T65.1X2	T65.1X3	T65.1X4	—	—
of salt — see Hydrochloric acid							(pesticide) (salts)						
surgical	T51.0X1	T51.0X2	T51.0X3	T51.0X4	—	—	medicinal	T48.291	T48.292	T48.293	T48.294	T48.295	T48.296
Spirolactone	T50.0X1	T50.0X2	T50.0X3	T50.0X4	T50.0X5	T50.0X6							
Spiroperidol	T43.4X1	T43.4X2	T43.4X3	T43.4X4	T43.4X5	T43.4X6							
Sponge, absorbable	T45.7X1	T45.7X2	T45.7X3	T45.7X4	T45.7X5	T45.7X6							
(gelatin)													

Chapter 9. Diseases of the Circulatory System (I00–I99)

Chapter-specific Guidelines with Coding Examples

The chapter-specific guidelines from the ICD-10-CM Official Guidelines for Coding and Reporting have been provided below. Along with these guidelines are coding examples, contained in the shaded boxes, that have been developed to help illustrate the coding and/or sequencing guidance found in these guidelines.

a. Hypertension

The classification presumes a causal relationship between hypertension and heart involvement and between hypertension and kidney involvement, as the two conditions are linked by the term “with” in the Alphabetic Index. These conditions should be coded as related even in the absence of provider documentation explicitly linking them, unless the documentation clearly states the conditions are unrelated.

For hypertension and conditions not specifically linked by relational terms such as “with,” “associated with” or “due to” in the classification, provider documentation must link the conditions in order to code them as related.

1) Hypertension with heart disease

Hypertension with heart conditions classified to I50.- or I51.4–I51.7, I51.89, I51.9, are assigned to a code from category I11, Hypertensive heart disease. Use additional code(s) from category I50, Heart failure, to identify the type(s) of heart failure in those patients with heart failure.

The same heart conditions (I50.-, I51.4–I51.7, I51.89, I51.9) with hypertension are coded separately if the provider has documented they are unrelated to the hypertension. Sequence according to the circumstances of the admission/encounter.

Patient is admitted in left heart failure. Patient also has a history of hypertension managed by medication.

I11.0 Hypertensive heart disease with heart failure

I50.1 Left ventricular failure, unspecified

Explanation: Without a diagnostic statement to the contrary, hypertension and heart failure have an assumed causal relationship, and a combination code should be used. An additional code to identify the type of heart failure (I50.-) should also be provided.

2) Hypertensive chronic kidney disease

Assign codes from category I12, Hypertensive chronic kidney disease, when both hypertension and a condition classifiable to category N18, Chronic kidney disease (CKD), are present. CKD should not be coded as hypertensive if the provider indicates the CKD is not related to the hypertension.

The appropriate code from category N18 should be used as a secondary code with a code from category I12 to identify the stage of chronic kidney disease.

See Section I.C.14. Chronic kidney disease.

If a patient has hypertensive chronic kidney disease and acute renal failure, an additional code for the acute renal failure is required.

Patient is admitted with stage IV chronic kidney disease (CKD) due to polycystic kidney disease. Patient also is on lisinopril for hypertension.

N18.4 Chronic kidney disease, stage 4 (severe)

Q61.3 Polycystic kidney, unspecified

I10 Essential (primary) hypertension

Explanation: A combination code describing a relationship between hypertension and CKD is not used because the physician documentation identifies the polycystic kidney disease as the cause for the CKD.

3) Hypertensive heart and chronic kidney disease

Assign codes from combination category I13, Hypertensive heart and chronic kidney disease, when there is hypertension with both heart and kidney involvement. If heart failure is present, assign an additional code from category I50 to identify the type of heart failure.

The appropriate code from category N18, Chronic kidney disease, should be used as a secondary code with a code from category I13 to identify the stage of chronic kidney disease.

See Section I.C.14. Chronic kidney disease.

The codes in category I13, Hypertensive heart and chronic kidney disease, are combination codes that include hypertension, heart disease and chronic kidney disease. The Includes note at I13 specifies that the conditions included at I11 and I12 are included together in I13. If a patient

has hypertension, heart disease and chronic kidney disease, then a code from I13 should be used, not individual codes for hypertension, heart disease and chronic kidney disease, or codes from I11 or I12.

For patients with both acute renal failure and chronic kidney disease, an additional code for acute renal failure is required.

Hypertensive heart and kidney disease with congestive heart failure and stage 2 chronic kidney disease

I13.0 Hypertensive heart and chronic kidney disease with heart failure and stage 1 through stage 4 chronic kidney disease, or unspecified chronic kidney disease

I50.9 Heart failure, unspecified

N18.2 Chronic kidney disease, stage 2 (mild)

Explanation: Combination codes in category I13 are used to report conditions classifiable to both categories I11 and I12. Do not report conditions classifiable to I11 and I12 separately. Use additional codes to report type of heart failure and stage of CKD.

4) Hypertensive cerebrovascular disease

For hypertensive cerebrovascular disease, first assign the appropriate code from categories I60–I69, followed by the appropriate hypertension code.

5) Hypertensive retinopathy

Subcategory H35.0, Background retinopathy and retinal vascular changes, should be used with a code from category I10–I15, Hypertensive disease to include the systemic hypertension. The sequencing is based on the reason for the encounter.

Hypertensive retinopathy of the right eye

H35.031 Hypertensive retinopathy, right eye

I10 Essential (primary) hypertension

Explanation: Hypertensive retinopathy requires two codes: the appropriate subcategory H35.0 code and a code for the hypertension.

6) Hypertension, secondary

Secondary hypertension is due to an underlying condition. Two codes are required: one to identify the underlying etiology and one from category I15 to identify the hypertension. Sequencing of codes is determined by the reason for admission/encounter.

Renovascular hypertension due to renal artery atherosclerosis

I15.0 Renovascular hypertension

I70.1 Atherosclerosis of renal artery

Explanation: Secondary hypertension requires two codes: a code to identify the etiology and the appropriate I15 code.

7) Hypertension, transient

Assign code R03.0, Elevated blood pressure reading without diagnosis of hypertension, unless patient has an established diagnosis of hypertension. Assign code O13.-, Gestational [pregnancy-induced] hypertension without significant proteinuria, or O14.-, Pre-eclampsia, for transient hypertension of pregnancy.

8) Hypertension, controlled

This diagnostic statement usually refers to an existing state of hypertension under control by therapy. Assign the appropriate code from categories I10–I15, Hypertensive diseases.

9) Hypertension, uncontrolled

Uncontrolled hypertension may refer to untreated hypertension or hypertension not responding to current therapeutic regimen. In either case, assign the appropriate code from categories I10–I15, Hypertensive diseases.

10) Hypertensive crisis

Assign a code from category I16, Hypertensive crisis, for documented hypertensive urgency, hypertensive emergency or unspecified hypertensive crisis. Code also any identified hypertensive disease (I10–I15). The sequencing is based on the reason for the encounter.

11) Pulmonary hypertension

Pulmonary hypertension is classified to category I27, Other pulmonary heart diseases. For secondary pulmonary hypertension (I27.1, I27.2-), code also any associated conditions or adverse effects of drugs or toxins.

- ✓ 5th** **I60.3 Nontraumatic subarachnoid hemorrhage from posterior communicating artery** **RIC CC**
I60.30 Nontraumatic subarachnoid hemorrhage from unspecified posterior communicating artery **RIC CC**
RIC Excl: 01 Stroke; 02 Traumatic brain injury; 03 Non-traumatic brain injury
- I60.31** Nontraumatic subarachnoid hemorrhage from **right** posterior communicating artery **RIC CC**
RIC Excl: 01 Stroke; 02 Traumatic brain injury; 03 Non-traumatic brain injury
- I60.32** Nontraumatic subarachnoid hemorrhage from **left** posterior communicating artery **RIC CC**
RIC Excl: 01 Stroke; 02 Traumatic brain injury; 03 Non-traumatic brain injury
- I60.4** Nontraumatic subarachnoid hemorrhage from **basilar artery** **RIC CC**
RIC Excl: 01 Stroke; 02 Traumatic brain injury; 03 Non-traumatic brain injury
- ✓ 5th** **I60.5 Nontraumatic subarachnoid hemorrhage from vertebral artery** **RIC CC**
I60.50 Nontraumatic subarachnoid hemorrhage from unspecified vertebral artery **RIC CC**
RIC Excl: 01 Stroke; 02 Traumatic brain injury; 03 Non-traumatic brain injury
- I60.51** Nontraumatic subarachnoid hemorrhage from **right** vertebral artery **RIC CC**
RIC Excl: 01 Stroke; 02 Traumatic brain injury; 03 Non-traumatic brain injury
- I60.52** Nontraumatic subarachnoid hemorrhage from **left** vertebral artery **RIC CC**
RIC Excl: 01 Stroke; 02 Traumatic brain injury; 03 Non-traumatic brain injury
- I60.6** Nontraumatic subarachnoid hemorrhage from other intracranial arteries **RIC CC**
RIC Excl: 01 Stroke; 02 Traumatic brain injury; 03 Non-traumatic brain injury
- I60.7** Nontraumatic subarachnoid hemorrhage from unspecified intracranial artery **RIC CC**
 Ruptured (congenital) berry aneurysm
 Ruptured (congenital) cerebral aneurysm
 Subarachnoid hemorrhage (nontraumatic) from cerebral artery NOS
 Subarachnoid hemorrhage (nontraumatic) from communicating artery NOS
EXCLUDES 1 berry aneurysm, nonruptured (I67.1)
RIC Excl: 01 Stroke; 02 Traumatic brain injury; 03 Non-traumatic brain injury
- I60.8** Other nontraumatic subarachnoid hemorrhage **RIC CC**
 Meningeal hemorrhage
 Rupture of cerebral arteriovenous malformation
RIC Excl: 01 Stroke; 02 Traumatic brain injury; 03 Non-traumatic brain injury
- I60.9** Nontraumatic subarachnoid hemorrhage, unspecified **RIC CC**
RIC Excl: 01 Stroke; 02 Traumatic brain injury; 03 Non-traumatic brain injury
- ✓ 4th** **I61 Nontraumatic intracerebral hemorrhage** **RIC CC**
EXCLUDES 2 sequelae of intracerebral hemorrhage (I69.1-)
AHA: 2017,2Q,9-10
- I61.0** Nontraumatic intracerebral hemorrhage in **hemisphere, subcortical** **RIC CC**
 Deep intracerebral hemorrhage (nontraumatic)
AHA: 2016,4Q,27
RIC Excl: 01 Stroke; 02 Traumatic brain injury; 03 Non-traumatic brain injury
- I61.1** Nontraumatic intracerebral hemorrhage in **hemisphere, cortical** **RIC CC**
 Cerebral lobe hemorrhage (nontraumatic)
 Superficial intracerebral hemorrhage (nontraumatic)
RIC Excl: 01 Stroke; 02 Traumatic brain injury; 03 Non-traumatic brain injury
- I61.2** Nontraumatic intracerebral hemorrhage in **hemisphere, unspecified** **RIC CC**
RIC Excl: 01 Stroke; 02 Traumatic brain injury; 03 Non-traumatic brain injury

- I61.3** Nontraumatic intracerebral hemorrhage in **brain stem** **RIC CC**
RIC Excl: 01 Stroke; 02 Traumatic brain injury; 03 Non-traumatic brain injury
- I61.4** Nontraumatic intracerebral hemorrhage in **cerebellum** **RIC CC**
RIC Excl: 01 Stroke; 02 Traumatic brain injury; 03 Non-traumatic brain injury
- I61.5** Nontraumatic intracerebral hemorrhage, **intraventricular** **RIC CC**
RIC Excl: 01 Stroke; 02 Traumatic brain injury; 03 Non-traumatic brain injury
- I61.6** Nontraumatic intracerebral hemorrhage, **multiple localized** **RIC CC**
RIC Excl: 01 Stroke; 02 Traumatic brain injury; 03 Non-traumatic brain injury
- I61.8** Other nontraumatic intracerebral hemorrhage **RIC CC**
RIC Excl: 01 Stroke; 02 Traumatic brain injury; 03 Non-traumatic brain injury
- I61.9** Nontraumatic intracerebral hemorrhage, **unspecified** **RIC CC**
RIC Excl: 01 Stroke; 02 Traumatic brain injury; 03 Non-traumatic brain injury
- ✓ 4th** **I62 Other and unspecified nontraumatic intracranial hemorrhage** **RIC CC**
EXCLUDES 2 sequelae of intracranial hemorrhage (I69.2)
- ✓ 5th** **I62.0 Nontraumatic subdural hemorrhage** **RIC CC**
I62.00 Nontraumatic subdural hemorrhage, unspecified **RIC CC**
RIC Excl: 01 Stroke; 02 Traumatic brain injury; 03 Non-traumatic brain injury
- I62.01** Nontraumatic **acute** subdural hemorrhage **RIC CC**
RIC Excl: 01 Stroke; 02 Traumatic brain injury; 03 Non-traumatic brain injury
- I62.02** Nontraumatic **subacute** subdural hemorrhage **RIC CC**
RIC Excl: 01 Stroke; 02 Traumatic brain injury; 03 Non-traumatic brain injury
- I62.03** Nontraumatic **chronic** subdural hemorrhage **RIC CC**
RIC Excl: 01 Stroke; 02 Traumatic brain injury; 03 Non-traumatic brain injury
- I62.1** Nontraumatic **extradural** hemorrhage **RIC CC**
 Nontraumatic epidural hemorrhage
RIC Excl: 01 Stroke; 02 Traumatic brain injury; 03 Non-traumatic brain injury
- I62.9** Nontraumatic intracranial hemorrhage, **unspecified** **RIC**
- ✓ 4th** **I63 Cerebral infarction** **RIC CC**
INCLUDES occlusion and stenosis of cerebral and precerebral arteries, resulting in cerebral infarction
 Use additional code, if applicable, to identify status post administration of tPA (rtPA) in a different facility within the last 24 hours prior to admission to current facility (Z92.82)
 Use additional code, if known, to indicate National Institutes of Health Stroke Scale (NIHSS) score (R29.7-)
EXCLUDES 2 sequelae of cerebral infarction (I69.3-)
AHA: 2017,2Q,9-10; 2016,4Q,28,61-62; 2014,1Q,23
- ✓ 5th** **I63.0 Cerebral infarction due to thrombosis of precerebral arteries** **RIC CC**
I63.00 Cerebral infarction due to thrombosis of unspecified precerebral artery **RIC CC**
RIC Excl: 01 Stroke
- ✓ 6th** **I63.01 Cerebral infarction due to thrombosis of vertebral artery** **RIC CC**
I63.011 Cerebral infarction due to thrombosis of **right** vertebral artery **RIC CC**
RIC Excl: 01 Stroke
- I63.012** Cerebral infarction due to thrombosis of **left** vertebral artery **RIC CC**
RIC Excl: 01 Stroke
- I63.013** Cerebral infarction due to thrombosis of **bilateral** vertebral arteries **RIC CC**
RIC Excl: 01 Stroke

✓4th M71 Other bursopathies

EXCLUDES 1 bunion (M20.1)
bursitis related to use, overuse or pressure (M70.-)
enthesopathies (M76-M77)

✓5th M71.0 Abscess of bursa

Use additional code (B95.-, B96.-) to identify causative organism

M71.00 Abscess of bursa, unspecified site

✓6th M71.01 Abscess of bursa, shoulder

M71.011 Abscess of bursa, right shoulder

M71.012 Abscess of bursa, left shoulder

M71.019 Abscess of bursa, unspecified shoulder

✓6th M71.02 Abscess of bursa, elbow

M71.021 Abscess of bursa, right elbow

M71.022 Abscess of bursa, left elbow

M71.029 Abscess of bursa, unspecified elbow

✓6th M71.03 Abscess of bursa, wrist

M71.031 Abscess of bursa, right wrist

M71.032 Abscess of bursa, left wrist

M71.039 Abscess of bursa, unspecified wrist

✓6th M71.04 Abscess of bursa, hand

M71.041 Abscess of bursa, right hand

M71.042 Abscess of bursa, left hand

M71.049 Abscess of bursa, unspecified hand

✓6th M71.05 Abscess of bursa, hip

M71.051 Abscess of bursa, right hip

M71.052 Abscess of bursa, left hip

M71.059 Abscess of bursa, unspecified hip

✓6th M71.06 Abscess of bursa, knee

M71.061 Abscess of bursa, right knee

M71.062 Abscess of bursa, left knee

M71.069 Abscess of bursa, unspecified knee

✓6th M71.07 Abscess of bursa, ankle and foot

M71.071 Abscess of bursa, right ankle and foot

M71.072 Abscess of bursa, left ankle and foot

M71.079 Abscess of bursa, unspecified ankle and foot

M71.08 Abscess of bursa, other site

M71.09 Abscess of bursa, multiple sites

✓5th M71.1 Other infective bursitis

Use additional code (B95.-, B96.-) to identify causative organism

M71.10 Other infective bursitis, unspecified site

✓6th M71.11 Other infective bursitis, shoulder

M71.111 Other infective bursitis, right shoulder

M71.112 Other infective bursitis, left shoulder

M71.119 Other infective bursitis, unspecified shoulder

✓6th M71.12 Other infective bursitis, elbow

M71.121 Other infective bursitis, right elbow

M71.122 Other infective bursitis, left elbow

M71.129 Other infective bursitis, unspecified elbow

✓6th M71.13 Other infective bursitis, wrist

M71.131 Other infective bursitis, right wrist

M71.132 Other infective bursitis, left wrist

M71.139 Other infective bursitis, unspecified wrist

✓6th M71.14 Other infective bursitis, hand

M71.141 Other infective bursitis, right hand

M71.142 Other infective bursitis, left hand

M71.149 Other infective bursitis, unspecified hand

✓6th M71.15 Other infective bursitis, hip

M71.151 Other infective bursitis, right hip

M71.152 Other infective bursitis, left hip

M71.159 Other infective bursitis, unspecified hip

✓6th M71.16 Other infective bursitis, knee

M71.161 Other infective bursitis, right knee

M71.162 Other infective bursitis, left knee

M71.169 Other infective bursitis, unspecified knee

✓6th M71.17 Other infective bursitis, ankle and foot

M71.171 Other infective bursitis, right ankle and foot

M71.172 Other infective bursitis, left ankle and foot

M71.179 Other infective bursitis, unspecified ankle and foot

M71.18 Other infective bursitis, other site

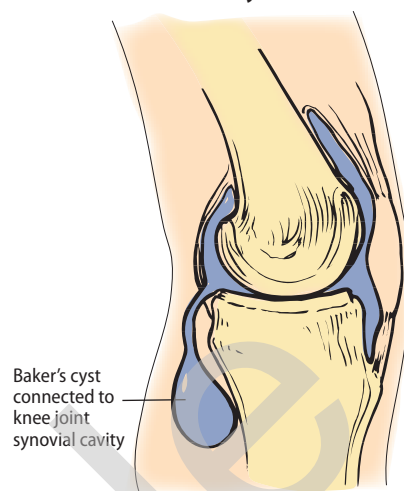
M71.19 Other infective bursitis, multiple sites

✓5th M71.2 Synovial cyst of popliteal space [Baker]

EXCLUDES 1 synovial cyst of popliteal space with rupture (M66.0)

DEF: Sac filled with clear synovial fluid in adults, usually secondary to disease inside the joint, located on the back of the knee in the popliteal fossa area. In children, the cyst usually represents a ganglion of one of the tendons in the knee.

Baker's Cyst



M71.20 Synovial cyst of popliteal space [Baker], unspecified knee

M71.21 Synovial cyst of popliteal space [Baker], right knee

M71.22 Synovial cyst of popliteal space [Baker], left knee

✓5th M71.3 Other bursal cyst

Synovial cyst NOS

EXCLUDES 1 synovial cyst with rupture (M66.1-)

M71.30 Other bursal cyst, unspecified site

✓6th M71.31 Other bursal cyst, shoulder

M71.311 Other bursal cyst, right shoulder

M71.312 Other bursal cyst, left shoulder

M71.319 Other bursal cyst, unspecified shoulder

✓6th M71.32 Other bursal cyst, elbow

M71.321 Other bursal cyst, right elbow

M71.322 Other bursal cyst, left elbow

M71.329 Other bursal cyst, unspecified elbow

✓6th M71.33 Other bursal cyst, wrist

M71.331 Other bursal cyst, right wrist

M71.332 Other bursal cyst, left wrist

M71.339 Other bursal cyst, unspecified wrist

✓6th M71.34 Other bursal cyst, hand

M71.341 Other bursal cyst, right hand

M71.342 Other bursal cyst, left hand

M71.349 Other bursal cyst, unspecified hand

✓6th M71.35 Other bursal cyst, hip

M71.351 Other bursal cyst, right hip

M71.352 Other bursal cyst, left hip

M71.359 Other bursal cyst, unspecified hip

✓6th M71.37 Other bursal cyst, ankle and foot

M71.371 Other bursal cyst, right ankle and foot

M71.372 Other bursal cyst, left ankle and foot

M71.379 Other bursal cyst, unspecified ankle and foot

M71.38 Other bursal cyst, other site

M71.39 Other bursal cyst, multiple sites

✓5th M71.4 Calcium deposit in bursa

EXCLUDES 2 calcium deposit in bursa of shoulder (M75.3)

M71.40 Calcium deposit in bursa, unspecified site

✓6th M71.42 Calcium deposit in bursa, elbow

M71.421 Calcium deposit in bursa, right elbow

M71.422 Calcium deposit in bursa, left elbow

M71.429 Calcium deposit in bursa, unspecified elbow

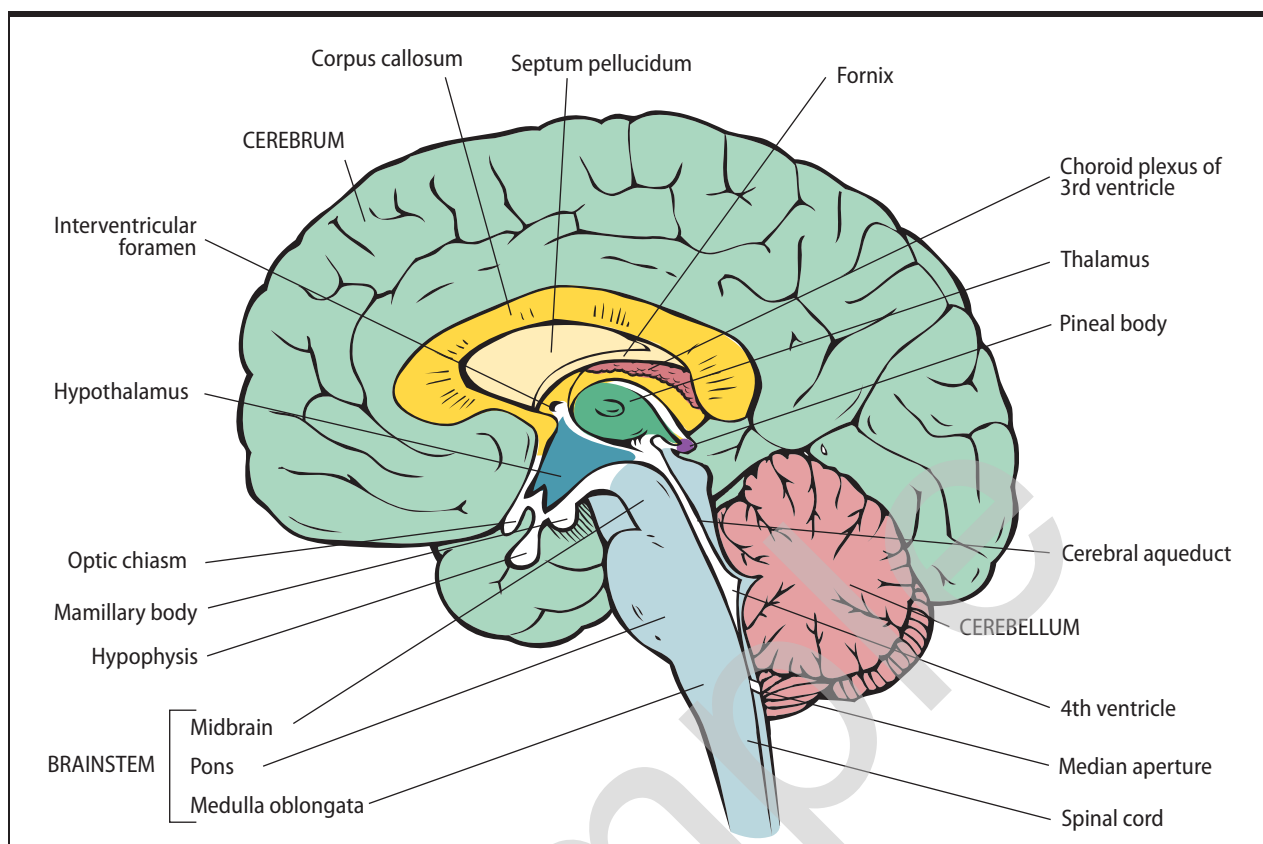
✓6th M71.43 Calcium deposit in bursa, wrist

M71.431 Calcium deposit in bursa, right wrist

Drug	Z Code	Drug Action/Classification	Indications
Duavee [bazedoxifene acetate/conjugated estrogens]	Z79.890	Estrogen therapy	Menopause symptoms; osteoporosis prevention
Duetact [glimepiride/pioglitazone hydrochloride]	Z79.84	Oral hypoglycemic	Diabetes mellitus
Duexis [famotidine/ibuprofen]	Z79.1	Nonsteroidal anti-inflammatory drug (NSAID)	Symptomatic treatment of osteoarthritis and rheumatoid arthritis; reduce risk of ulcers
Dulera [formoterol fumarate/mometasone furoate]	Z79.51	Corticosteroid -inhaled; antiasthmatic	Prophylaxis and treatment of asthma
Duragesic [fentanyl]	Z79.891	Analgesic, narcotic	Chronic pain
Duramorph PF [morphine sulfate]	Z79.891	Analgesic, narcotic	Moderate to severe pain
Durlaza [aspirin]	Z79.82	Aspirin	Prevention of heart attack, stroke, angina
Dynacin [minocycline hydrochloride]	Z79.2	Antibiotic	Severe acne treatment
E.E.S. [erythromycin ethylsuccinate]	Z79.2	Antibiotic	Bacterial infections
Effexor XR [venlafaxine hydrochloride]		Antidepressant, serotonin and norepinephrine reuptake inhibitors (SNRIs)	Major depressive disorder; social anxiety disorder; panic disorder
Effient [prasugrel hydrochloride]	Z79.02	Antiplatelet	Lessening of the chance of heart attack or stroke
Elestrin [estradiol]	Z79.890	Estrogen therapy	Menopause symptoms
Eligard [leuprolide acetate]	Z79.818	Agents affecting estrogen receptors and estrogen levels	Palliative treatment of prostate cancer symptoms
Elinest [norgestrel/ethinyl estradiol]	Z79.3	Contraceptive	Prevention of pregnancy
Eliquis [apixaban]	Z79.01	Anticoagulant	Venous thrombosis
Embeda [morphine sulfate/naltrexone hydrochloride]	Z79.891	Analgesic, narcotic	Moderate to severe pain
Emoquette [ethinyl estradiol/desogestrel]	Z79.3	Contraceptive	Prevention of pregnancy
Emtriva [emtricitabine]	Z79.899	Antiretroviral	HIV
Enbrel [etanercept]	Z79.899	Antirheumatic	Rheumatoid arthritis; polyarticular juvenile idiopathic arthritis; psoriatic arthritis; ankylosing spondylitis, plaque psoriasis
Enpresse-28 [ethinyl estradiol/levonorgestrel]	Z79.3	Contraceptive	Prevention of pregnancy
Enskyce [desogestrel/ethinyl estradiol]	Z79.3	Contraceptive	Prevention of pregnancy
Entocort EC [budesonide]	Z79.52	Corticosteroid	Crohn's disease; ulcerative colitis
Entresto [sacubitril/valsartan]		Angiotensin II receptor blocker; neprilysin inhibitor	Chronic heart failure
Entyvio [vedolizumab]	Z79.899	Immunosuppressant	Ulcerative colitis; Crohn's disease
Envarsus XR [tacrolimus]	Z79.899	Immunosuppressant	Prophylaxis of organ transplant rejection
Epinephrine [epinephrine]		Bronchodilator, cardiotonic	Most commonly, relief of distress due to bronchospasm and restoration of cardiac rhythm in cardiac arrest
Epivir, Epivir-HBV [lamivudine]	Z79.899	Antiretroviral	HIV, hepatitis B (HBV), asymptomatic HIV
Erelzi [etanercept-szsz]	Z79.899	Antirheumatic	Rheumatoid arthritis; polyarticular juvenile idiopathic arthritis; psoriatic arthritis; ankylosing spondylitis, plaque psoriasis
Errin [norethindrone]	Z79.3	Contraceptive	Prevention of pregnancy
Ertapenem [ertapenem sodium]	Z79.2	Antibiotic	Stomach, urinary tract, pelvis, skin and lung infections
Ery-Tab [erythromycin]	Z79.2	Antibiotic	Bacterial infections
ERYC [erythromycin]	Z79.2	Antibiotic	Respiratory tract infections
Erygel [erythromycin]	Z79.2	Antibiotic, topical	Bacterial skin infections
EryPed [erythromycin ethylsuccinate]	Z79.2	Antibiotic	Bacterial infections; rheumatic fever attacks
Erythrocin [erythromycin lactobionate]	Z79.2	Antibiotic	Bacterial infections
Erythromycin [erythromycin]	Z79.2	Antibiotic	Respiratory tract infections
Estarylla [ethinyl estradiol/norgestimate]	Z79.3	Contraceptive	Prevention of pregnancy
Estrace [estradiol]	Z79.890	Estrogen therapy	Vaginal cream for treatment of vaginal and vulvar atrophy
EstroGel [estradiol]	Z79.890	Estrogen therapy -topical	Menopause symptoms
Eurostep Fe [ethinyl estradiol/norethindrone acetate]	Z79.3	Contraceptive	Prevention of pregnancy
Evista [raloxifene hydrochloride]	Z79.810	Selective estrogen receptor modulator (SERM)	Prevention of thinning of the bones (osteoporosis) only in postmenopausal women
Exalgo [hydromorphone hydrochloride]	Z79.891	Analgesic, narcotic	Moderate to severe pain
Exemestane [exemestane]	Z79.811	Aromatase inhibitor	Postmenopausal breast cancer
Factive [gemifloxacin mesylate]	Z79.2	Antibiotic	Bacterial lung infections
Falmina [ethinyl estradiol/levonorgestrel]	Z79.3	Contraceptive	Prevention of pregnancy

Chapter 6. Diseases of the Nervous System (G00–G99)

Brain



Cranial Nerves

