



2022 CODING
GUIDELINES
INCLUDED

EXPERT

ICD-10-CM Expert for Physicians

The complete official code set

Codes valid from October 1, 2021
through September 30, 2022

2022

[optum360coding.com](https://www.optum360coding.com)

Contents

Preface	iii	Chapter 5. Mental, Behavioral, and Neurodevelopmental Disorders (F01-F99)	543
ICD-10-CM Official Preface	iii	Chapter 6. Diseases of the Nervous System (G00-G99)	569
Characteristics of ICD-10-CM	iii	Chapter 7. Diseases of the Eye and Adnexa (H00-H59)	593
How to Use ICD-10-CM Expert for Physicians 2022	iv	Chapter 8. Diseases of the Ear and Mastoid Process (H60-H95)	631
Introduction	iv	Chapter 9. Diseases of the Circulatory System (I00-I99)	643
What's New for 2022	iv	Chapter 10. Diseases of the Respiratory System (J00-J99)	687
Conversion Table	iv	Chapter 11. Diseases of the Digestive System (K00-K95)	705
10 Steps to Correct Coding.....	iv	Chapter 12. Diseases of the Skin and Subcutaneous Tissue (L00-L99)	729
Official ICD-10-CM Guidelines for Coding and Reporting.....	iv	Chapter 13. Diseases of the Musculoskeletal System and Connective Tissue (M00-M99)	751
Indexes	iv	Chapter 14. Diseases of the Genitourinary System (N00-N99)	839
Index to Diseases and Injuries	iv	Chapter 15. Pregnancy, Childbirth, and the Puerperium (O00-O9A)	859
Neoplasm Table.....	iv	Chapter 16. Certain Conditions Originating in the Perinatal Period (P00-P96)	899
Table of Drugs and Chemicals	v	Chapter 17. Congenital Malformations, Deformations and Chromosomal Abnormalities (Q00-Q99)	913
External Causes Index	v	Chapter 18. Symptoms, Signs and Abnormal Clinical and Laboratory Findings (R00-R99)	933
Index Notations	v	Chapter 19. Injury, Poisoning and Certain Other Consequences of External Causes (S00-T88)	955
Tabular List of Diseases	vi	Chapter 20. External Causes of Morbidity (V00-Y99).....	1157
Code and Code Descriptions	vi	Chapter 21. Factors Influencing Health Status and Contact With Health Services (Z00-Z99)	1221
Tabular Notations	vi	Chapter 22. Codes for Special Purposes (U00-U85).....	1257
Optum360 Notations	vii		
Icons	vii	Appendixes	Appendixes–1
Color Bars	viii	Appendix A: Valid 3-character ICD-10-CM Codes.....	Appendixes–1
Footnotes	viii	Appendix B: Pharmacology List 2021	Appendixes–3
Chapter-Level Notations	viii	Appendix C: Z Codes for Long-Term Drug Use with Associated Drugs	Appendixes–23
Appendixes.....	viii	Appendix D: Z Codes Only as Principal/First-Listed Diagnosis	Appendixes–27
Illustrations.....	ix	Appendix E: Centers for Medicare & Medicaid Services Hierarchical Condition Categories (CMS-HCC)	Appendixes–29
		Appendix F: Centers for Medicare & Medicaid Services Quality Payment Program	Appendixes–31
What's New for 2022	x	Illustrations	Illustrations–1
Official Updates	x	Chapter 3. Diseases of the Blood and Blood-forming Organs and Certain Disorders Involving the Immune Mechanism (D50–D89)	Illustrations–1
Proprietary Updates	xvii	Red Blood Cells	Illustrations–1
		White Blood Cell	Illustrations–1
Conversion Table of ICD-10-CM Codes	xix	Platelet	Illustrations–2
		Coagulation	Illustrations–2
10 Steps to Correct Coding	xx	Spleen Anatomical Location and External Structures	Illustrations–3
		Spleen Interior Structures	Illustrations–3
ICD-10-CM Official Guidelines for Coding and Reporting	Coding Guidelines–1	Chapter 4. Endocrine, Nutritional and Metabolic Diseases (E00–E89)	Illustrations–4
		Endocrine System	Illustrations–4
ICD-10-CM Index to Diseases and Injuries	1	Thyroid	Illustrations–5
ICD-10-CM Neoplasm Table	335		
ICD-10-CM Table of Drugs and Chemicals	354		
ICD-10-CM Index to External Causes	403		
ICD-10-CM Tabular List of Diseases and Injuries	439		
Chapter 1. Certain Infectious and Parasitic Diseases (A00-B99)	439		
Chapter 2. Neoplasms (C00-D49)	465		
Chapter 3. Diseases of the Blood and Blood-forming Organs and Certain Disorders Involving the Immune Mechanism (D50–D89)	505		
Chapter 4. Endocrine, Nutritional and Metabolic Diseases (E00–E89)	519		

	Thyroid and Parathyroid Glands	Illustrations–5		Lower Respiratory System	Illustrations–27
	Pancreas	Illustrations–6		Paranasal Sinuses	Illustrations–27
	Anatomy of the Adrenal Gland	Illustrations–6		Lung Segments	Illustrations–28
	Structure of an Ovary	Illustrations–7		Alveoli	Illustrations–28
	Testis and Associated Structures	Illustrations–7	Chapter 11. Diseases of the Digestive System		
	Thymus	Illustrations–8	(K00–K95)	Illustrations–29	
Chapter 6. Diseases of the Nervous System			Digestive System	Illustrations–29	
(G00–G99)	Illustrations–9		Omentum and Mesentery	Illustrations–30	
Brain	Illustrations–9		Peritoneum and Retroperitoneum ...	Illustrations–30	
Cranial Nerves	Illustrations–9		Chapter 12. Diseases of the Skin and Subcutaneous		
Peripheral Nervous System	Illustrations–10		Tissue (L00–L99)	Illustrations–31	
Spinal Cord and Spinal Nerves	Illustrations–11		Nail Anatomy	Illustrations–31	
Nerve Cell	Illustrations–12		Skin and Subcutaneous Tissue	Illustrations–31	
Chapter 7. Diseases of the Eye and Adnexa			Chapter 13. Diseases of the Musculoskeletal System		
(H00–H59)	Illustrations–13		and Connective Tissue (M00–M99)	Illustrations–32	
Eye	Illustrations–13		Bones and Joints	Illustrations–32	
Posterior Pole of Globe/Flow of			Shoulder Anterior View	Illustrations–33	
Aqueous Humor	Illustrations–13		Shoulder Posterior View	Illustrations–33	
Lacrimal System	Illustrations–14		Elbow Anterior View	Illustrations–33	
Eye Musculature	Illustrations–14		Elbow Posterior View	Illustrations–33	
Eyelid Structures	Illustrations–14		Hand	Illustrations–33	
Chapter 8. Diseases of the Ear and Mastoid			Hip Anterior View	Illustrations–34	
Process (H60–H95)	Illustrations–15		Hip Posterior View	Illustrations–34	
Ear Anatomy	Illustrations–15		Knee Anterior View	Illustrations–34	
Chapter 9. Diseases of the Circulatory			Knee Posterior View	Illustrations–34	
System (I00–I99)	Illustrations–16		Foot	Illustrations–34	
Anatomy of the Heart	Illustrations–16		Muscles.....	Illustrations–35	
Heart Cross Section	Illustrations–16		Chapter 14. Diseases of the Genitourinary		
Heart Valves	Illustrations–17		System (N00–N99)	Illustrations–36	
Heart Conduction System	Illustrations–17		Urinary System	Illustrations–36	
Coronary Arteries	Illustrations–18		Male Genitourinary System	Illustrations–37	
Arteries	Illustrations–19		Female Internal Genitalia	Illustrations–37	
Veins	Illustrations–20		Female Genitourinary Tract Lateral		
Internal Carotid and Vertebral			View	Illustrations–37	
Arteries and Branches	Illustrations–21		Chapter 15. Pregnancy, Childbirth and the		
External Carotid Artery and			Puerperium (O00–O9A)	Illustrations–38	
Branches	Illustrations–21		Term Pregnancy – Single		
Branches of Abdominal Aorta	Illustrations–22		Gestation	Illustrations–38	
Portal Venous Circulation	Illustrations–22		Twin Gestation–Dichorionic–		
Lymphatic System	Illustrations–23		Diamniotic (DI-DI)	Illustrations–38	
Axillary Lymph Nodes	Illustrations–24		Twin Gestation–Monochorionic–		
Lymphatic System of Head			Diamniotic (MO-DI)	Illustrations–39	
and Neck	Illustrations–24		Twin Gestation–Monochorionic–		
Lymphatic Capillaries	Illustrations–25		Monoamniotic (MO-MO)	Illustrations–39	
Lymphatic Drainage	Illustrations–25		Chapter 19. Injury, Poisoning and Certain Other		
Chapter 10. Diseases of the Respiratory			Consequences of External Causes		
System (J00–J99)	Illustrations–26		(S00–T88)	Illustrations–40	
Respiratory System	Illustrations–26		Types of Fractures	Illustrations–40	
Upper Respiratory System	Illustrations–27		Salter-Harris Fracture Types	Illustrations–40	

10 Steps to Correct Coding

Follow the 10 steps below to correctly code encounters for health care services.

Step 1: Identify the reason for the visit or encounter (i.e., a sign, symptom, diagnosis and/or condition).

The medical record documentation should accurately reflect the patient's condition, using terminology that includes specific diagnoses and symptoms or clearly states the reasons for the encounter.

Choosing the main term that best describes the reason chiefly responsible for the service provided is the most important step in coding. If symptoms are present and documented but a definitive diagnosis has not yet been determined, code the symptoms. *For outpatient cases, do not code conditions that are referred to as "rule out," "suspected," "probable," or "questionable."* Diagnoses often are not established at the time of the initial encounter/visit and may require two or more visits to be established. Code only what is documented in the available outpatient records and only to the highest degree of certainty known at the time of the patient's visit. For inpatient medical records, uncertain diagnoses may be reported if documented at the time of discharge.

Step 2: After selecting the reason for the encounter, consult the alphabetic index.

The most critical rule is to begin code selection in the alphabetic index. Never turn first to the tabular list. The index provides cross-references, essential and nonessential modifiers, and other instructional notations that may not be found in the tabular list.

Step 3: Locate the main term entry.

The alphabetic index lists conditions, which may be expressed as nouns or eponyms, with critical use of adjectives. Some conditions known by several names have multiple main entries. Reasons for encounters may be located under general terms such as admission, encounter, and examination. Other general terms such as history, status (post), or presence (of) can be used to locate other factors influencing health.

Step 4: Scan subterm entries.

Scan the subterm entries, as appropriate, being sure to review continued lines and additional subterms that may appear in the next column or on the next page. Shaded vertical guidelines in the index indicate the indentation level for each subterm in relation to the main terms.

Step 5: Pay close attention to index instructions.

- Parentheses () enclose nonessential modifiers, terms that are supplementary words or explanatory information that may or may not appear in the diagnostic statement and do not affect code selection.
- Brackets [] enclose manifestation codes that can be used only as secondary codes to the underlying condition code immediately preceding it. If used, manifestation codes must be reported with the appropriate etiology codes.
- Default codes are listed next to the main term and represent the condition most commonly associated with the main term or the unspecified code for the main term.
- "See" cross-references, identified by italicized type and "code by" cross-references indicate that another term *must be referenced* to locate the correct code.
- "See also" cross-references, identified by italicized type, provide alternative terms that may be useful to look up but *are not mandatory*.
- "Omit code" cross-references identify instances when a code is not applicable depending on the condition being coded.
- "With" subterms are listed out of alphabetic order and identify a presumed causal relationship between the two conditions they link.
- "Due to" subterms identify a relationship between the two conditions they link.

- "NEC," abbreviation for "not elsewhere classified," follows some main terms or subterms and indicates that there is no specific code for the condition even though the medical documentation may be very specific.
- "NOS," abbreviation for "not otherwise specified," follows some main terms or subterms and is the equivalent of unspecified; NOS signifies that the information in the medical record is insufficient for assigning a more specific code.
- *Following* references help coders locate alphanumeric codes that are out of sequence in the tabular section.
- Check additional-character symbols flag codes that require additional characters to make the code valid; the characters available to complete the code should be verified in the tabular section.

Step 6: Choose a potential code and locate it in the tabular list.

To prevent coding errors, always use both the alphabetic index (to identify a code) and the tabular list (to verify a code), as the index does not include the important instructional notes found in the tabular list. An added benefit of using the tabular list, which groups like things together, is that while looking at one code in the list, a coder might see a more specific one that would have been missed had the coder relied solely on the alphabetic index. Additionally, many of the codes require a fourth, fifth, sixth, or seventh character to be valid, and many of these characters can be found only in the tabular list.

Step 7: Read all instructional material in the tabular section.

The coder must follow any Includes, Excludes 1 and Excludes 2 notes, and other instructional notes, such as "Code first" and "Use additional code," listed in the tabular list for the chapter, category, subcategory, and subclassification levels of code selection that direct the coder to use a different or additional code. Any codes in the tabular range A00.0- through T88.9- may be used to identify the diagnostic reason for the encounter. The tabular list encompasses many codes describing disease and injury classifications (e.g., infectious and parasitic diseases, neoplasms, symptoms, nervous and circulatory system etc.).

Codes that describe symptoms and signs, as opposed to definitive diagnoses, should be reported when an established diagnosis has not been made (confirmed) by the physician. Chapter 18 of the ICD-10-CM code book, "Symptoms, Signs, and Abnormal Clinical and Laboratory Findings, Not Elsewhere Classified" (codes R00.-R99), contains many, but not all, codes for symptoms.

ICD-10-CM classifies encounters with health care providers for circumstances other than a disease or injury in chapter 21, "Factors Influencing Health Status and Contact with Health Services" (codes Z00-Z99). Circumstances other than a disease or injury often are recorded as chiefly responsible for the encounter.

A code is invalid if it does not include the full number of characters (greatest level of specificity) required. Codes in ICD-10-CM can contain from three to seven alphanumeric characters. A three-character code is to be used only if the category is not further subdivided into four-, five-, six-, or seven-character codes. Placeholder character X is used as part of an alphanumeric code to allow for future expansion and as a placeholder for empty characters in a code that requires a seventh character but has no fourth, fifth, or sixth character. Note that certain categories require seventh characters that apply to all codes in that category. Always check the category level for applicable seventh characters for that category.

Step 8: Consult the official ICD-10-CM conventions and guidelines.

The *ICD-10-CM Official Guidelines for Coding and Reporting* govern the use of certain codes. These guidelines provide both general and chapter-specific coding guidance.

Admission

Admission — *continued*
 examination at health care facility — *see also* Examination — *continued*
 vision — *continued*
 infant or child (over 28 days old) Z00.129
 with abnormal findings Z00.121

fitting (of)
 artificial
 arm — *see* Admission, adjustment, artificial, arm
 eye Z44.2 ✓
 leg — *see* Admission, adjustment, artificial, leg
 brain neuropacemaker Z46.2
 implanted Z45.42
 breast prosthesis (external) Z44.3 ✓
 colostomy belt Z46.89
 contact lenses Z46.0
 cystostomy device Z46.6
 dental prosthesis Z46.3
 dentures Z46.3
 device NEC
 abdominal Z46.89
 nervous system Z46.2
 implanted — *see* Admission, adjustment, device, implanted, nervous system
 orthodontic Z46.4
 prosthetic Z44.9
 breast Z44.3 ✓
 dental Z46.3
 eye Z44.2 ✓
 substitution
 auditory Z46.2
 implanted — *see* Admission, adjustment, device, implanted, hearing device
 nervous system Z46.2
 implanted — *see* Admission, adjustment, device, implanted, nervous system
 visual Z46.2
 implanted Z45.31
 hearing aid Z46.1
 ileostomy device Z46.89
 intestinal appliance or device NEC Z46.89
 neuropacemaker (brain) (peripheral nerve) (spinal cord) Z46.2
 implanted Z45.42
 orthodontic device Z46.4
 orthopedic device (brace) (cast) (shoes) Z46.89
 prosthesis Z44.9
 arm — *see* Admission, adjustment, artificial, arm
 breast Z44.3 ✓
 dental Z46.3
 eye Z44.2 ✓
 leg — *see* Admission, adjustment, artificial, leg
 specified type NEC Z44.8
 spectacles Z46.0
 follow-up examination Z09
 intrauterine device management Z30.431
 initial prescription Z30.014
 mental health evaluation Z00.8
 requested by authority Z04.6
 observation — *see* Observation
 Papanicolaou smear, cervix Z12.4
 for suspected malignant neoplasm Z12.4
 plastic and reconstructive surgery following medical procedure or healed injury NEC Z42.8
 plastic surgery, cosmetic NEC Z41.1
 postpartum observation
 immediately after delivery Z39.0
 routine follow-up Z39.2
 poststerilization (for restoration) Z31.0
 aftercare Z31.42
 procreative management Z31.9
 prophylactic (measure) — *see also* Encounter, prophylactic measures
 organ removal Z40.00
 breast Z40.01
 fallopian tube(s) Z40.03
 with ovary(s) Z40.02
 ovary(s) Z40.02
 specified organ NEC Z40.09
 testes Z40.09
 vaccination Z23
 psychiatric examination (general) Z00.8
 requested by authority Z04.6
 radiation therapy (antineoplastic) Z51.0
 reconstructive surgery following medical procedure or healed injury NEC Z42.8
 removal of
 cystostomy catheter Z43.5

Admission — *continued*
 removal of — *continued*
 drains Z48.03
 dressing (nonsurgical) Z48.00
 implantable subdermal contraceptive Z30.46
 intrauterine contraceptive device Z30.432
 neuropacemaker (brain) (peripheral nerve) (spinal cord) Z46.2
 implanted Z45.42
 staples Z48.02
 surgical dressing Z48.01
 sutures Z48.02
 ureteral stent Z46.6
 respirator [ventilator] use during power failure Z99.12
 restoration of organ continuity (poststerilization) Z31.0
 aftercare Z31.42
 sensitivity test — *see also* Test, skin
 allergy NEC Z01.82
 Mantoux Z11.1
 tuboplasty following previous sterilization Z31.0
 aftercare Z31.42
 vasoplasty following previous sterilization Z31.0
 aftercare Z31.42
 vision examination Z01.00
 with abnormal findings Z01.01
 following failed vision screening Z01.020
 with abnormal findings Z01.021
 infant or child (over 28 days old) Z00.129
 with abnormal findings Z00.121
 waiting period for admission to other facility Z75.1

Adnexitis (suppurative) — *see* Salpingo-oophoritis
Adolescent X-linked adrenoleukodystrophy E71.521
Adrenal (gland) — *see* condition
Adrenalism, tuberculous A18.7
Adrenitis, adrenitis E27.8
 autoimmune E27.1
 meningococcal, hemorrhagic A39.1
Adrenarcho, premature E27.0
Adrenocortical syndrome — *see* Cushing's, syndrome
Adrenogenital syndrome E25.9
 acquired E25.8
 congenital E25.0
 salt loss E25.0
Adrenogenitalism, congenital E25.0
Adrenoleukodystrophy E71.529
 neonatal E71.511
 X-linked E71.529
 Addison only phenotype E71.528
 Addison-Schilder E71.528
 adolescent E71.521
 adrenomyeloneuropathy E71.522
 childhood cerebral E71.520
 other specified E71.528
Adrenomyeloneuropathy E71.522
Adventitious bursa — *see* Bursopathy, specified type
 NEC
Adverse effect — *see* Table of Drugs and Chemicals, categories T36-T50, with 6th character 5
Advice — *see* Counseling
Adynamia (episodic) (hereditary) (periodic) G72.3
Aeration lung imperfect, newborn — *see* Atelectasis
Aerobullosis T70.3 ✓
Aerocele — *see* Embolism, air
Aerodermetasia
 subcutaneous (traumatic) T79.7 ✓
Aerodontalgia T70.29 ✓
Aeroembolism T70.3 ✓
Aerogenes capsulatus infection A48.0
Aero-otitis media T70.0 ✓
Aerophagy, aerophagia (psychogenic) F45.8
Aerophobia F40.228
Aerosinusitis T70.1 ✓
Aerotitis T70.0 ✓
Affection — *see* Disease
Afibrinogenemia — *see also* Defect, coagulation D68.8
 acquired D65
 congenital D68.2
 following ectopic or molar pregnancy O08.1
 in abortion — *see* Abortion, by type, complicated by, afibrinogenemia
 puerperal O72.3
African
 sleeping sickness B56.9
 tick fever A68.1
 trypanosomiasis B56.9
 gambian B56.0
 rhodesian B56.1
Aftercare — *see also* Care Z51.89

Aftercare — *continued*
 following surgery (for) (on)
 amputation Z47.81
 attention to
 drains Z48.03
 dressings (nonsurgical) Z48.00
 surgical Z48.01
 sutures Z48.02
 circulatory system Z48.812
 delayed (planned) wound closure Z48.1
 digestive system Z48.815
 explantation of joint prosthesis (staged procedure)
 hip Z47.32
 knee Z47.33
 shoulder Z47.31
 genitourinary system Z48.816
 joint replacement Z47.1
 neoplasm Z48.3
 nervous system Z48.811
 oral cavity Z48.814
 organ transplant
 bone marrow Z48.290
 heart Z48.21
 heart-lung Z48.280
 kidney Z48.22
 liver Z48.23
 lung Z48.24
 multiple organs NEC Z48.288
 specified NEC Z48.298
 orthopedic NEC Z47.89
 planned wound closure Z48.1
 removal of internal fixation device Z47.2
 respiratory system Z48.813
 scoliosis Z47.82
 sense organs Z48.810
 skin and subcutaneous tissue Z48.817
 specified body system
 circulatory Z48.812
 digestive Z48.815
 genitourinary Z48.816
 nervous Z48.811
 oral cavity Z48.814
 respiratory Z48.813
 sense organs Z48.810
 skin and subcutaneous tissue Z48.817
 teeth Z48.814
 specified NEC Z48.89
 spinal Z47.89
 teeth Z48.814
 fracture — *code* to fracture with seventh character D
 involving
 removal of
 drains Z48.03
 dressings (nonsurgical) Z48.00
 staples Z48.02
 surgical dressings Z48.01
 sutures Z48.02
 neuropacemaker (brain) (peripheral nerve) (spinal cord) Z46.2
 implanted Z45.42
 orthopedic NEC Z47.89
 postprocedural — *see* Aftercare, following surgery
After-cataract — *see* Cataract, secondary
Agalactia (primary) O92.3
 elective, secondary or therapeutic O92.5
Agammaglobulinemia (acquired) (secondary) (nonfamilial) D80.1
 with
 immunoglobulin-bearing B-lymphocytes D80.1
 lymphopenia D81.9
 autosomal recessive (Swiss type) D80.0
 Bruton's X-linked D80.0
 common variable (CV gamma) D80.1
 congenital sex-linked D80.0
 hereditary D80.0
 lymphopenic D81.9
 Swiss type (autosomal recessive) D80.0
 X-linked (with growth hormone deficiency) (Bruton) D80.0
Aganglionosis (bowel) (colon) Q43.1
Age (old) — *see* Senility
Agensis
 adrenal (gland) Q89.1
 alimentary tract (complete) (partial) NEC Q45.8
 upper Q40.8
 anus, anal (canal) Q42.3
 with fistula Q42.2
 aorta Q25.41

ICD-10-CM Tabular List of Diseases and Injuries

Chapter 1. Certain Infectious and Parasitic Diseases (A00–B99), U07.1

Chapter-specific Guidelines with Coding Examples

The chapter-specific guidelines from the ICD-10-CM Official Guidelines for Coding and Reporting have been provided below. Along with these guidelines are coding examples, contained in the shaded boxes, that have been developed to help illustrate the coding and/or sequencing guidance found in these guidelines.

a. Human immunodeficiency virus (HIV) infections

1) Code only confirmed cases

Code only confirmed cases of HIV infection/illness. This is an exception to the hospital inpatient guideline Section II, H.

In this context, “confirmation” does not require documentation of positive serology or culture for HIV; the provider’s diagnostic statement that the patient is HIV positive, or has an HIV-related illness is sufficient.

Patient being seen for hypothyroidism with possible HIV infection

E03.9 Hypothyroidism, unspecified

Explanation: Only the hypothyroidism is coded in this scenario because it has not been confirmed that an HIV infection is present.

2) Selection and sequencing of HIV codes

(a) Patient admitted for HIV-related condition

If a patient is admitted for an HIV-related condition, the principal diagnosis should be B20, Human immunodeficiency virus [HIV] disease followed by additional diagnosis codes for all reported HIV-related conditions.

HIV with CMV

B20 Human immunodeficiency virus [HIV] disease

B25.9 Cytomegaloviral disease, unspecified

Explanation: Cytomegaloviral infection is an HIV related condition, so the HIV diagnosis code is reported first, followed by the code for the CMV.

(b) Patient with HIV disease admitted for unrelated condition

If a patient with HIV disease is admitted for an unrelated condition (such as a traumatic injury), the code for the unrelated condition (e.g., the nature of injury code) should be the principal diagnosis. Other diagnoses would be B20 followed by additional diagnosis codes for all reported HIV-related conditions.

Sprain of the internal collateral ligament, right ankle; HIV

S93.491A Sprain of other ligament of right ankle, initial encounter

B20 Human immunodeficiency virus [HIV] disease

Explanation: The ankle sprain is not related to HIV, so it is the first-listed diagnosis code, and HIV is reported secondarily.

(c) Whether the patient is newly diagnosed

Whether the patient is newly diagnosed or has had previous admissions/encounters for HIV conditions is irrelevant to the sequencing decision.

Newly diagnosed multiple cutaneous Kaposi’s sarcoma lesions in previously diagnosed HIV disease

B20 Human immunodeficiency virus [HIV] disease

C46.0 Kaposi’s sarcoma of skin

Explanation: Even though the HIV was diagnosed on a previous encounter, it is still sequenced first when coded with an HIV-related condition. Kaposi’s sarcoma is an HIV-related condition.

(d) Asymptomatic human immunodeficiency virus

Z21, Asymptomatic human immunodeficiency virus [HIV] infection status, is to be applied when the patient without any documentation of symptoms is listed as being “HIV positive,” “known HIV,” “HIV test positive,” or similar terminology. Do not use this code if the term “AIDS” is used or if the patient is treated for any HIV-related illness or is

described as having any condition(s) resulting from his/her HIV positive status; use B20 in these cases.

Patient is being seen for iron deficiency anemia. Status positive HIV test on Atripla, with no prior symptoms

D50.9 Iron deficiency anemia, unspecified

Z21 Asymptomatic human immunodeficiency virus [HIV] infection status

Explanation: Code Z21 is sequenced second since documentation indicates that the patient has had a positive HIV test but has been asymptomatic. Being on medication for HIV is not an indication that code B20 is used instead of Z21. Unless there has been documentation that the patient has had current or prior symptoms or HIV-related complications, code B20 is not used. The anemia is not an AIDS-related complication and is sequenced first.

(e) Patients with inconclusive HIV serology

Patients with inconclusive HIV serology, but no definitive diagnosis or manifestations of the illness, may be assigned code R75, Inconclusive laboratory evidence of human immunodeficiency virus [HIV].

(f) Previously diagnosed HIV-related illness

Patients with any known prior diagnosis of an HIV-related illness should be coded to B20. Once a patient has developed an HIV-related illness, the patient should always be assigned code B20 on every subsequent admission/encounter. Patients previously diagnosed with any HIV illness (B20) should never be assigned to R75 or Z21, Asymptomatic human immunodeficiency virus [HIV] infection status.

(g) HIV infection in pregnancy, childbirth and the puerperium

During pregnancy, childbirth or the puerperium, a patient admitted (or presenting for a health care encounter) because of an HIV-related illness should receive a principal diagnosis code of O98.7-, Human immunodeficiency [HIV] disease complicating pregnancy, childbirth and the puerperium, followed by B20 and the code(s) for the HIV-related illness(es). Codes from Chapter 15 always take sequencing priority.

Patients with asymptomatic HIV infection status admitted (or presenting for a health care encounter) during pregnancy, childbirth, or the puerperium should receive codes of O98.7- and Z21.

(h) Encounters for testing for HIV

If a patient is being seen to determine his/her HIV status, use code Z11.4, Encounter for screening for human immunodeficiency virus [HIV]. Use additional codes for any associated high-risk behavior.

If a patient with signs or symptoms is being seen for HIV testing, code the signs and symptoms. An additional counseling code Z71.7, Human immunodeficiency virus [HIV] counseling, may be used if counseling is provided during the encounter for the test.

When a patient returns to be informed of his/her HIV test results and the test result is negative, use code Z71.7, Human immunodeficiency virus [HIV] counseling.

If the results are positive, see previous guidelines and assign codes as appropriate.

b. Infectious agents as the cause of diseases classified to other chapters

Certain infections are classified in chapters other than Chapter 1 and no organism is identified as part of the infection code. In these instances, it is necessary to use an additional code from Chapter 1 to identify the organism. A code from category B95, Streptococcus, Staphylococcus, and Enterococcus as the cause of diseases classified to other chapters, B96, Other bacterial agents as the cause of diseases classified to other chapters, or B97, Viral agents as the cause of diseases classified to other chapters, is to be used as an additional code to identify the organism. An instructional note will be found at the infection code advising that an additional organism code is required.

Acute *E. coli* cystitis

N30.00 Acute cystitis without hematuria

B96.20 Unspecified Escherichia coli [E.coli] as the cause of diseases classified elsewhere

Explanation: An instructional note under the category for the cystitis indicates to code also the specific organism.

Chapter 8. Diseases of the Ear and Mastoid Process (H60-H95)

NOTE Use an external cause code following the code for the ear condition, if applicable, to identify the cause of the ear condition

EXCLUDES 2 certain conditions originating in the perinatal period (P04-P96)
certain infectious and parasitic diseases (A00-B99)
complications of pregnancy, childbirth and the puerperium (O00-O9A)
congenital malformations, deformations and chromosomal abnormalities (Q00-Q99)
endocrine, nutritional and metabolic diseases (E00-E88)
injury, poisoning and certain other consequences of external causes (S00-T88)
neoplasms (C00-D49)
symptoms, signs and abnormal clinical and laboratory findings, not elsewhere classified (R00-R94)

This chapter contains the following blocks:

H60-H62 Diseases of external ear
H65-H75 Diseases of middle ear and mastoid
H80-H83 Diseases of inner ear
H90-H94 Other disorders of ear
H95 Intraoperative and postprocedural complications and disorders of ear and mastoid process, not elsewhere classified

Diseases of external ear (H60-H62)

√4th H60 Otitis externa

TIP: When the specific infectious agent is identified, a code from Chapter 1 is assigned instead of a code from this category.

√5th H60.0 Abscess of external ear

Boil of external ear
Carbuncle of auricle or external auditory canal
Furuncle of external ear

H60.00 Abscess of external ear, unspecified ear

H60.01 Abscess of right external ear

H60.02 Abscess of left external ear

H60.03 Abscess of external ear, bilateral

√5th H60.1 Cellulitis of external ear

Cellulitis of auricle
Cellulitis of external auditory canal

H60.10 Cellulitis of external ear, unspecified ear

H60.11 Cellulitis of right external ear

H60.12 Cellulitis of left external ear

H60.13 Cellulitis of external ear, bilateral

√5th H60.2 Malignant otitis externa

H60.20 Malignant otitis externa, unspecified ear

H60.21 Malignant otitis externa, right ear

H60.22 Malignant otitis externa, left ear

H60.23 Malignant otitis externa, bilateral

√5th H60.3 Other infective otitis externa

√6th H60.31 Diffuse otitis externa

H60.311 Diffuse otitis externa, right ear Q

H60.312 Diffuse otitis externa, left ear Q

H60.313 Diffuse otitis externa, bilateral Q

H60.319 Diffuse otitis externa, unspecified ear Q

√6th H60.32 Hemorrhagic otitis externa

H60.321 Hemorrhagic otitis externa, right ear Q

H60.322 Hemorrhagic otitis externa, left ear Q

H60.323 Hemorrhagic otitis externa, bilateral Q

H60.329 Hemorrhagic otitis externa, unspecified ear Q

√6th H60.33 Swimmer's ear

DEF: Commonly occurs when water gets trapped in the ear after swimming.

H60.331 Swimmer's ear, right ear Q

H60.332 Swimmer's ear, left ear Q

H60.333 Swimmer's ear, bilateral Q

H60.339 Swimmer's ear, unspecified ear Q

√6th H60.39 Other infective otitis externa

H60.391 Other infective otitis externa, right ear Q

H60.392 Other infective otitis externa, left ear Q

H60.393 Other infective otitis externa, bilateral Q

H60.399 Other infective otitis externa, unspecified ear Q

√5th H60.4 Cholesteatoma of external ear

Keratosis obturans of external ear (canal)
EXCLUDES 2 cholesteatoma of middle ear (H71.-)
recurrent cholesteatoma of postmastoidectomy cavity (H95.0-)

DEF: Cholesteatoma: Noncancerous cyst-like mass of cell debris, including cholesterol and epithelial cells resulting from trauma, repeated or improperly healed infections, and congenital enclosure of epidermal cells.

H60.40 Cholesteatoma of external ear, unspecified ear

H60.41 Cholesteatoma of right external ear

H60.42 Cholesteatoma of left external ear

H60.43 Cholesteatoma of external ear, bilateral

√5th H60.5 Acute noninfective otitis externa

√6th H60.50 Unspecified acute noninfective otitis externa

Acute otitis externa NOS

H60.501 Unspecified acute noninfective otitis externa, right ear Q

H60.502 Unspecified acute noninfective otitis externa, left ear Q

H60.503 Unspecified acute noninfective otitis externa, bilateral Q

H60.509 Unspecified acute noninfective otitis externa, unspecified ear Q

√6th H60.51 Acute actinic otitis externa

H60.511 Acute actinic otitis externa, right ear Q

H60.512 Acute actinic otitis externa, left ear Q

H60.513 Acute actinic otitis externa, bilateral Q

H60.519 Acute actinic otitis externa, unspecified ear Q

√6th H60.52 Acute chemical otitis externa

H60.521 Acute chemical otitis externa, right ear Q

H60.522 Acute chemical otitis externa, left ear Q

H60.523 Acute chemical otitis externa, bilateral Q

H60.529 Acute chemical otitis externa, unspecified ear Q

√6th H60.53 Acute contact otitis externa

H60.531 Acute contact otitis externa, right ear Q

H60.532 Acute contact otitis externa, left ear Q

H60.533 Acute contact otitis externa, bilateral Q

H60.539 Acute contact otitis externa, unspecified ear Q

√6th H60.54 Acute eczematoid otitis externa

H60.541 Acute eczematoid otitis externa, right ear Q

H60.542 Acute eczematoid otitis externa, left ear Q

H60.543 Acute eczematoid otitis externa, bilateral Q

H60.549 Acute eczematoid otitis externa, unspecified ear Q

√6th H60.55 Acute reactive otitis externa

H60.551 Acute reactive otitis externa, right ear Q

H60.552 Acute reactive otitis externa, left ear Q

H60.553 Acute reactive otitis externa, bilateral Q

H60.559 Acute reactive otitis externa, unspecified ear Q

√6th H60.59 Other noninfective acute otitis externa

H60.591 Other noninfective acute otitis externa, right ear Q

H60.592 Other noninfective acute otitis externa, left ear Q

H60.593 Other noninfective acute otitis externa, bilateral Q

H60.599 Other noninfective acute otitis externa, unspecified ear Q

J39.3 Upper respiratory tract hypersensitivity reaction, site unspecified

EXCLUDES 1 hypersensitivity reaction of upper respiratory tract, such as:
 extrinsic allergic alveolitis (J67.9)
 pneumoconiosis (J60–J67.9)

J39.8 Other specified diseases of upper respiratory tract

J39.9 Disease of upper respiratory tract, unspecified

Chronic lower respiratory diseases (J40–J47)

EXCLUDES 1 bronchitis due to chemicals, gases, fumes and vapors (J68.0)

EXCLUDES 2 cystic fibrosis (E84.-)

J40 Bronchitis, not specified as acute or chronic

Bronchitis NOS
 Bronchitis with tracheitis NOS
 Catarrhal bronchitis
 Tracheobronchitis NOS

Use additional code to identify:

exposure to environmental tobacco smoke (Z77.22)
 exposure to tobacco smoke in the perinatal period (P96.81)
 history of tobacco dependence (Z87.891)
 occupational exposure to environmental tobacco smoke (Z57.31)
 tobacco dependence (F17.-)
 tobacco use (Z72.0)

EXCLUDES 1 acute bronchitis (J20.-)
 allergic bronchitis NOS (J45.909-)
 asthmatic bronchitis NOS (J45.9-)
 bronchitis due to chemicals, gases, fumes and vapors (J68.0)

AHA: 2020,1Q,34-36

TIP: Assign as a secondary code for a patient with bronchitis of unspecified acuity due to COVID-19; assign U07.1 as the principal or first-listed code.

J41 Simple and mucopurulent chronic bronchitis

Use additional code to identify:

exposure to environmental tobacco smoke (Z77.22)
 exposure to tobacco smoke in the perinatal period (P96.81)
 history of tobacco dependence (Z87.891)
 occupational exposure to environmental tobacco smoke (Z57.31)
 tobacco dependence (F17.-)
 tobacco use (Z72.0)

EXCLUDES 1 chronic bronchitis NOS (J42)
 chronic obstructive bronchitis (J44.-)

J41.0 Simple chronic bronchitis

HCC Q

J41.1 Mucopurulent chronic bronchitis

HCC Q

J41.8 Mixed simple and mucopurulent chronic bronchitis

HCC Q

J42 Unspecified chronic bronchitis

HCC Q

Chronic bronchitis NOS
 Chronic tracheitis
 Chronic tracheobronchitis

Use additional code to identify:

exposure to environmental tobacco smoke (Z77.22)
 exposure to tobacco smoke in the perinatal period (P96.81)
 history of tobacco dependence (Z87.891)
 occupational exposure to environmental tobacco smoke (Z57.31)
 tobacco dependence (F17.-)
 tobacco use (Z72.0)

EXCLUDES 1 chronic asthmatic bronchitis (J44.-)
 chronic bronchitis with airways obstruction (J44.-)
 chronic emphysematous bronchitis (J44.-)
 chronic obstructive pulmonary disease NOS (J44.9)
 simple and mucopurulent chronic bronchitis (J41.-)

J43 Emphysema

Use additional code to identify:

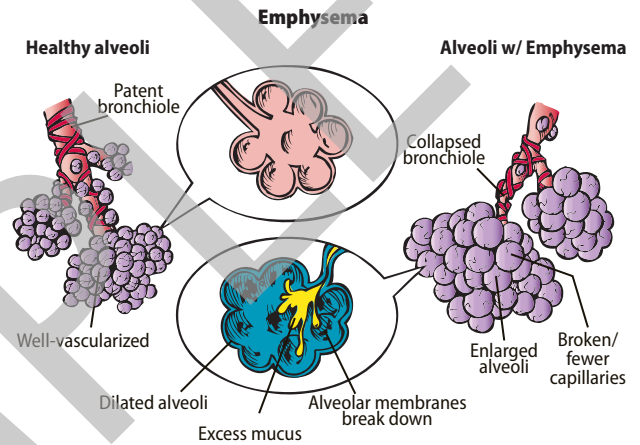
exposure to environmental tobacco smoke (Z77.22)
 history of tobacco dependence (Z87.891)
 occupational exposure to environmental tobacco smoke (Z57.31)
 tobacco dependence (F17.-)
 tobacco use (Z72.0)

EXCLUDES 1 compensatory emphysema (J98.3)
 emphysema due to inhalation of chemicals, gases, fumes or vapors (J68.4)

emphysema with chronic (obstructive) bronchitis (J44.-)
 emphysematous (obstructive) bronchitis (J44.-)
 interstitial emphysema (J98.2)
 mediastinal emphysema (J98.2)
 neonatal interstitial emphysema (P25.0)
 surgical (subcutaneous) emphysema (T81.82)
 traumatic subcutaneous emphysema (T79.7)

EXCLUDES 2 ▶traumatic subcutaneous emphysema (T79.7)◀

DEF: Pathological condition in which there is destructive enlargement of the air sacs in the lungs resulting in damage and lack of elasticity to the alveolar walls, commonly seen in long-term smokers.



J43.0 Unilateral pulmonary emphysema [MacLeod's syndrome]

HCC Q

Swyer-James syndrome
 Unilateral emphysema
 Unilateral hyperlucent lung
 Unilateral pulmonary artery functional hypoplasia
 Unilateral transparency of lung

J43.1 Panlobular emphysema

HCC Q

Panacinar emphysema

J43.2 Centrilobular emphysema

HCC Q

J43.8 Other emphysema

HCC Q

J43.9 Emphysema, unspecified

HCC Q

Bullous emphysema (lung)(pulmonary)
 Emphysema (lung)(pulmonary) NOS
 Emphysematous bleb
 Vesicular emphysema (lung)(pulmonary)
AHA: 2019,1Q,34-36; 2017,4Q,97-98

Chapter 18. Symptoms, Signs and Abnormal Clinical and Laboratory Findings, Not Elsewhere Classified (R00-R99)

NOTE

This chapter includes symptoms, signs, abnormal results of clinical or other investigative procedures, and ill-defined conditions regarding which no diagnosis classifiable elsewhere is recorded.

Signs and symptoms that point rather definitely to a given diagnosis have been assigned to a category in other chapters of the classification. In general, categories in this chapter include the less well-defined conditions and symptoms that, without the necessary study of the case to establish a final diagnosis, point perhaps equally to two or more diseases or to two or more systems of the body. Practically all categories in the chapter could be designated 'not otherwise specified', 'unknown etiology' or 'transient'. The Alphabetical Index should be consulted to determine which symptoms and signs are to be allocated here and which to other chapters. The residual subcategories, numbered .8, are generally provided for other relevant symptoms that cannot be allocated elsewhere in the classification.

The conditions and signs or symptoms included in categories R00-R94 consist of:

- cases for which no more specific diagnosis can be made even after all the facts bearing on the case have been investigated;
- signs or symptoms existing at the time of initial encounter that proved to be transient and whose causes could not be determined;
- provisional diagnosis in a patient who failed to return for further investigation or care;
- cases referred elsewhere for investigation or treatment before the diagnosis was made;
- cases in which a more precise diagnosis was not available for any other reason;
- certain symptoms, for which supplementary information is provided, that represent important problems in medical care in their own right.

EXCLUDES 2

abnormal findings on antenatal screening of mother (O28.-) certain conditions originating in the perinatal period (P04-P96) signs and symptoms classified in the body system chapters signs and symptoms of breast (N63, N64.5)

AHA: 2017,1Q,6,7

This chapter contains the following blocks:

- R00-R09 Symptoms and signs involving the circulatory and respiratory systems
- R10-R19 Symptoms and signs involving the digestive system and abdomen
- R20-R23 Symptoms and signs involving the skin and subcutaneous tissue
- R25-R29 Symptoms and signs involving the nervous and musculoskeletal systems
- R30-R39 Symptoms and signs involving the genitourinary system
- R40-R46 Symptoms and signs involving cognition, perception, emotional state and behavior
- R47-R49 Symptoms and signs involving speech and voice
- R50-R69 General symptoms and signs
- R70-R79 Abnormal findings on examination of blood, without diagnosis
- R80-R82 Abnormal findings on examination of urine, without diagnosis
- R83-R89 Abnormal findings on examination of other body fluids, substances and tissues, without diagnosis
- R90-R94 Abnormal findings on diagnostic imaging and in function studies, without diagnosis
- R97 Abnormal tumor markers
- R99 Ill-defined and unknown cause of mortality

Symptoms and signs involving the circulatory and respiratory systems (R00-R09)

✓4th R00 Abnormalities of heart beat

EXCLUDES 1 *abnormalities originating in the perinatal period (P29.1-)*

EXCLUDES 2 *specified arrhythmias (I47-I49)*

R00.0 Tachycardia, unspecified

Rapid heart beat

Sinoauricular tachycardia NOS

Sinus [sinusal] tachycardia NOS

EXCLUDES 1 *neonatal tachycardia (P29.11)*

paroxysmal tachycardia (I47.-)

DEF: Excessively rapid heart rate of more than 100 beats per minute.

R00.1 Bradycardia, unspecified

Sinoatrial bradycardia

Sinus bradycardia

Slow heart beat

Vagal bradycardia

Use additional code for adverse effect, if applicable, to identify drug (T36-T50 with fifth or sixth character 5)

EXCLUDES 1 *neonatal bradycardia (P29.12)*

AHA: 2020,2Q,23

DEF: Slowed heartbeat, usually defined as a rate fewer than 60 beats per minute. Heart rhythm may be slow as a result of a congenital defect or an acquired problem.

R00.2 Palpitations

Awareness of heart beat

R00.8 Other abnormalities of heart beat

R00.9 Unspecified abnormalities of heart beat

✓4th R01 Cardiac murmurs and other cardiac sounds

EXCLUDES 1 *cardiac murmurs and sounds originating in the perinatal period (P29.8)*

R01.0 Benign and innocent cardiac murmurs

Functional cardiac murmur

R01.1 Cardiac murmur, unspecified

Cardiac bruit NOS

Heart murmur NOS

Systolic murmur NOS

R01.2 Other cardiac sounds

Cardiac dullness, increased or decreased

Precordial friction

✓4th R03 Abnormal blood-pressure reading, without diagnosis

R03.0 Elevated blood-pressure reading, without diagnosis of hypertension

NOTE

This category is to be used to record an episode of elevated blood pressure in a patient in whom no formal diagnosis of hypertension has been made, or as an isolated incidental finding.

R03.1 Nonspecific low blood-pressure reading

EXCLUDES 1 *hypotension (I95.-)*

maternal hypotension syndrome (O26.5-)

neurogenic orthostatic hypotension (G90.3)

✓4th R04 Hemorrhage from respiratory passages

R04.0 Epistaxis

Hemorrhage from nose

Nosebleed

R04.1 Hemorrhage from throat

EXCLUDES 2 *hemoptysis (R04.2)*

R04.2 Hemoptysis

Blood-stained sputum

Cough with hemorrhage

AHA: 2013,4Q,118

✓5th R04.8 Hemorrhage from other sites in respiratory passages

R04.81 Acute idiopathic pulmonary hemorrhage in infants

AIPHI

Acute idiopathic hemorrhage in infants over 28 days old

EXCLUDES 1 *perinatal pulmonary hemorrhage (P26.-) von Willebrand's disease (D68.0)*

R04.89 Hemorrhage from other sites in respiratory passages

Pulmonary hemorrhage NOS

R04.9 Hemorrhage from respiratory passages, unspecified

R05 Cough

EXCLUDES 1 *cough with hemorrhage (R04.2)*

smoker's cough (J41.0)

AHA: 2016,2Q,33

- Z62.6 Inappropriate (excessive) parental pressure
- √5th Z62.8 Other specified problems related to upbringing
 - √6th Z62.81 Personal history of abuse in childhood
 - Z62.810 Personal history of physical and sexual abuse in childhood
 - EXCLUDES 1** current child physical abuse (T74.12, T76.12)
 - current child sexual abuse (T74.22, T76.22)
 - Z62.811 Personal history of psychological abuse in childhood
 - EXCLUDES 1** current child psychological abuse (T74.32, T76.32)
 - Z62.812 Personal history of neglect in childhood
 - EXCLUDES 1** current child neglect (T74.02, T76.02)
 - Z62.813 Personal history of forced labor or sexual exploitation in childhood
 - AHA: 2018,4Q,32,35
 - Z62.819 Personal history of unspecified abuse in childhood
 - EXCLUDES 1** current child abuse NOS (T74.92, T76.92)
 - √6th Z62.82 Parent-child conflict
 - Z62.820 Parent-biological child conflict
 - Parent-child problem NOS
 - Z62.821 Parent-adopted child conflict
 - Z62.822 Parent-foster child conflict
 - √6th Z62.89 Other specified problems related to upbringing
 - Z62.890 Parent-child estrangement NEC
 - Z62.891 Sibling rivalry
 - Z62.898 Other specified problems related to upbringing
- Z62.9 Problem related to upbringing, unspecified
- √4th Z63 Other problems related to primary support group, including family circumstances
 - EXCLUDES 2** maltreatment syndrome (T74.-, T76)
 - parent-child problems (Z62.-)
 - problems related to negative life events in childhood (Z62.-)
 - problems related to upbringing (Z62.-)
- Z63.0 Problems in relationship with spouse or partner
 - Relationship distress with spouse or intimate partner
 - EXCLUDES 1** counseling for spousal or partner abuse problems (Z69.1)
 - counseling related to sexual attitude, behavior, and orientation (Z70.-)
- Z63.1 Problems in relationship with in-laws
- √5th Z63.3 Absence of family member
 - EXCLUDES 1** absence of family member due to disappearance and death (Z63.4)
 - absence of family member due to separation and divorce (Z63.5)
- Z63.31 Absence of family member due to military deployment
 - Individual or family affected by other family member being on military deployment
 - EXCLUDES 1** family disruption due to return of family member from military deployment (Z63.71)
- Z63.32 Other absence of family member
- Z63.4 Disappearance and death of family member
 - Assumed death of family member
 - Bereavement
 - AHA: 2014,1Q,25
- Z63.5 Disruption of family by separation and divorce
 - Marital estrangement
- Z63.6 Dependent relative needing care at home
- √5th Z63.7 Other stressful life events affecting family and household
 - Z63.71 Stress on family due to return of family member from military deployment
 - Individual or family affected by family member having returned from military deployment (current or past conflict)
 - Z63.72 Alcoholism and drug addiction in family

- Z63.79 Other stressful life events affecting family and household
 - Anxiety (normal) about sick person in family
 - Health problems within family
 - Ill or disturbed family member
 - Isolated family
- Z63.8 Other specified problems related to primary support group
 - Family discord NOS
 - Family estrangement NOS
 - High expressed emotional level within family
 - Inadequate family support NOS
 - Inadequate or distorted communication within family
- Z63.9 Problem related to primary support group, unspecified
 - Relationship disorder NOS
- √4th Z64 Problems related to certain psychosocial circumstances
 - Z64.0 Problems related to unwanted pregnancy
 - Z64.1 Problems related to multiparity
 - Z64.4 Discord with counselors
 - Discord with probation officer
 - Discord with social worker
- √4th Z65 Problems related to other psychosocial circumstances
 - Z65.0 Conviction in civil and criminal proceedings without imprisonment
 - Z65.1 Imprisonment and other incarceration
 - Z65.2 Problems related to release from prison
 - Z65.3 Problems related to other legal circumstances
 - Arrest
 - Child custody or support proceedings
 - Litigation
 - Prosecution
 - Z65.4 Victim of crime and terrorism
 - Victim of torture
 - Z65.5 Exposure to disaster, war and other hostilities
 - EXCLUDES 1** target of perceived discrimination or persecution (Z60.5)
 - Z65.8 Other specified problems related to psychosocial circumstances
 - Religious or spiritual problem
 - Z65.9 Problem related to unspecified psychosocial circumstances

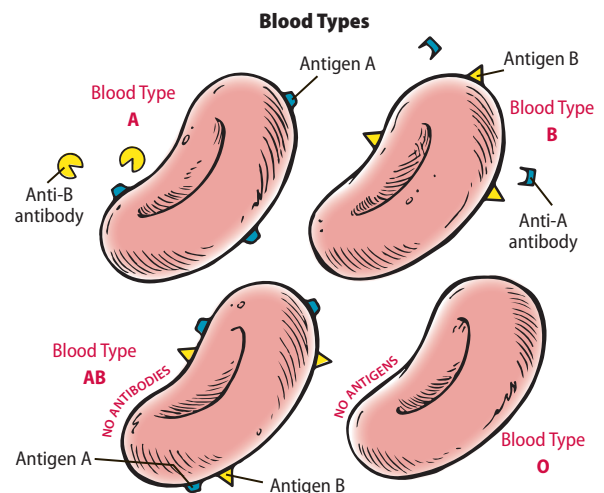
Do not resuscitate status (Z66)

Z66 Do not resuscitate

DNR status
DEF: Medical order written by a physician that instructs others not to perform cardiopulmonary resuscitation (CPR), intubation, or advanced life support (ACLS). It prevents unnecessary invasive treatment to prolong life should breathing stop or cardiac arrest occur.

Blood type (Z67)

√4th Z67 Blood type
 AHA: 2015,3Q,40



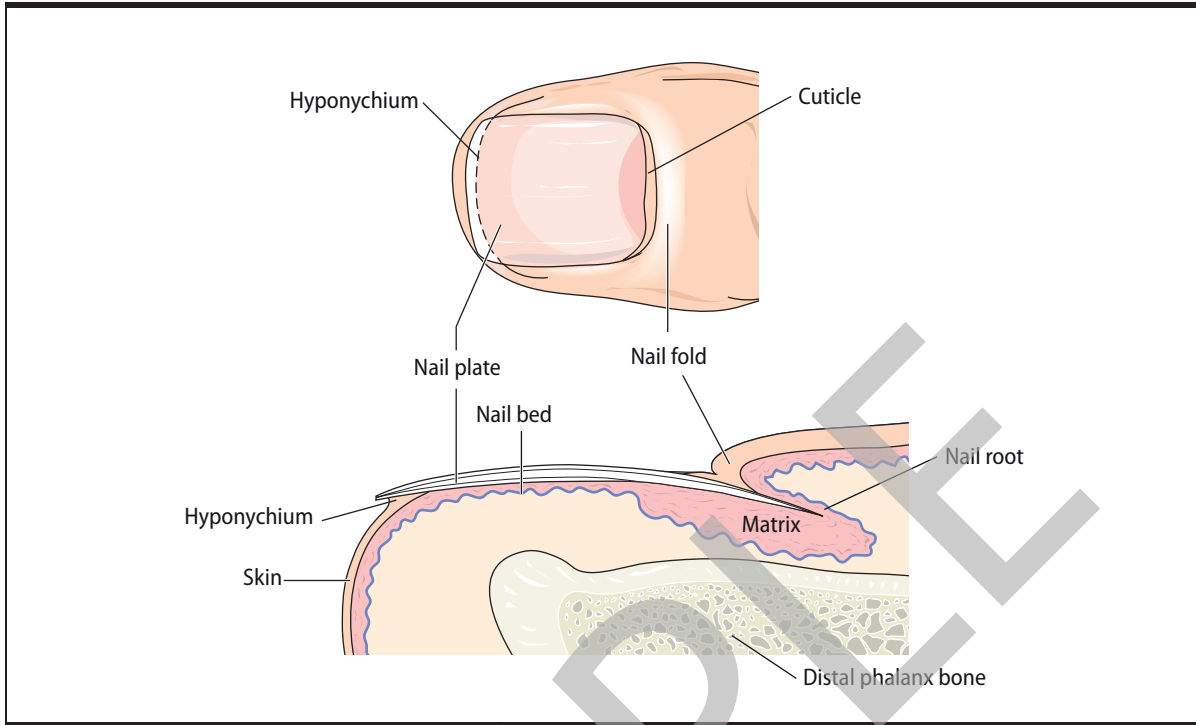
√5th Z67.1 Type A blood
 Z67.10 Type A blood, Rh positive

Appendix A: Valid 3-character ICD-10-CM Codes

A09	Infectious gastroenteritis and colitis, unspecified	E46	Unspecified protein-calorie malnutrition
A33	Tetanus neonatorum	E52	Niacin deficiency [pellagra]
A34	Obstetrical tetanus	E54	Ascorbic acid deficiency
A35	Other tetanus	E58	Dietary calcium deficiency
A46	Erysipelas	E59	Dietary selenium deficiency
A55	Chlamydial lymphogranuloma (venereum)	E60	Dietary zinc deficiency
A57	Chancroid	E65	Localized adiposity
A58	Granuloma inguinale	E68	Sequelae of hyperalimentation
A64	Unspecified sexually transmitted disease	F04	Amnesic disorder due to known physiological condition
A65	Nonvenereal syphilis	F05	Delirium due to known physiological condition
A70	Chlamydia psittaci infections	F09	Unspecified mental disorder due to known physiological condition
A78	Q fever	F21	Schizotypal disorder
A86	Unspecified viral encephalitis	F22	Delusional disorders
A89	Unspecified viral infection of central nervous system	F23	Brief psychotic disorder
A90	Dengue fever [classical dengue]	F24	Shared psychotic disorder
A91	Dengue hemorrhagic fever	F28	Other psychotic disorder not due to a substance or known physiological condition
A94	Unspecified arthropod-borne viral fever	F29	Unspecified psychosis not due to a substance or known physiological condition
A99	Unspecified viral hemorrhagic fever	F39	Unspecified mood [affective] disorder
B03	Smallpox	F54	Psychological and behavioral factors associated with disorders or diseases classified elsewhere
B04	Monkeypox	F59	Unspecified behavioral syndromes associated with physiological disturbances and physical factors
B09	Unspecified viral infection characterized by skin and mucous membrane lesions	F66	Other sexual disorders
B20	Human immunodeficiency virus [HIV] disease	F69	Unspecified disorder of adult personality and behavior
B49	Unspecified mycosis	F70	Mild intellectual disabilities
B54	Unspecified malaria	F71	Moderate intellectual disabilities
B59	Pneumocystosis	F72	Severe intellectual disabilities
B64	Unspecified protozoal disease	F73	Profound intellectual disabilities
B72	Dracunculiasis	F78	Other intellectual disabilities
B75	Trichinellosis	F79	Unspecified intellectual disabilities
B79	Trichuriasis	F82	Specific developmental disorder of motor function
B80	Enterobiasis	F88	Other disorders of psychological development
B86	Scabies	F89	Unspecified disorder of psychological development
B89	Unspecified parasitic disease	F99	Mental disorder, not otherwise specified
B91	Sequelae of poliomyelitis	G01	Meningitis in bacterial diseases classified elsewhere
B92	Sequelae of leprosy	G02	Meningitis in other infectious and parasitic diseases classified elsewhere
C01	Malignant neoplasm of base of tongue	G07	Intracranial and intraspinal abscess and granuloma in diseases classified elsewhere
C07	Malignant neoplasm of parotid gland	G08	Intracranial and intraspinal phlebitis and thrombophlebitis
C12	Malignant neoplasm of pyriform sinus	G09	Sequelae of inflammatory diseases of central nervous system
C19	Malignant neoplasm of rectosigmoid junction	G10	Huntington's disease
C20	Malignant neoplasm of rectum	G14	Postpolio syndrome
C23	Malignant neoplasm of gallbladder	G20	Parkinson's disease
C33	Malignant neoplasm of trachea	G26	Extrapyramidal and movement disorders in diseases classified elsewhere
C37	Malignant neoplasm of thymus	G35	Multiple sclerosis
C52	Malignant neoplasm of vagina	G53	Cranial nerve disorders in diseases classified elsewhere
C55	Malignant neoplasm of uterus, part unspecified	G55	Nerve root and plexus compressions in diseases classified elsewhere
C58	Malignant neoplasm of placenta	G59	Mononeuropathy in diseases classified elsewhere
C61	Malignant neoplasm of prostate	G63	Polyneuropathy in diseases classified elsewhere
C73	Malignant neoplasm of thyroid gland	G64	Other disorders of peripheral nervous system
D34	Benign neoplasm of thyroid gland	G92	Toxic encephalopathy
D45	Polycythemia vera	G94	Other disorders of brain in diseases classified elsewhere
D62	Acute posthemorrhagic anemia	H22	Disorders of iris and ciliary body in diseases classified elsewhere
D65	Disseminated intravascular coagulation [defibrination syndrome]	H28	Cataract in diseases classified elsewhere
D66	Hereditary factor VIII deficiency	H32	Chorioretinal disorders in diseases classified elsewhere
D67	Hereditary factor IX deficiency	H36	Retinal disorders in diseases classified elsewhere
D71	Functional disorders of polymorphonuclear neutrophils	H42	Glaucoma in diseases classified elsewhere
D77	Other disorders of blood and blood-forming organs in diseases classified elsewhere	I00	Rheumatic fever without heart involvement
E02	Subclinical iodine-deficiency hypothyroidism	I10	Essential (primary) hypertension
E15	Nondiabetic hypoglycemic coma	I32	Pericarditis in diseases classified elsewhere
E35	Disorders of endocrine glands in diseases classified elsewhere	I38	Endocarditis, valve unspecified
E40	Kwashiorkor		
E41	Nutritional marasmus		
E42	Marasmic kwashiorkor		
E43	Unspecified severe protein-calorie malnutrition		
E45	Retarded development following protein-calorie malnutrition		

Chapter 12. Diseases of the Skin and Subcutaneous Tissue (L00–L99)

Nail Anatomy



Skin and Subcutaneous Tissue

