

# ICD-10-CM Expert for Hospitals

**The complete official code set**

Codes valid from October 1, 2022  
through September 30, 2023

A decorative graphic at the bottom of the page consisting of three overlapping circles in shades of gray. The rightmost circle is dark gray and contains the year "2023" in white. A large, light gray "SAMPLE" watermark is oriented diagonally across the center of the page.

2023

# Contents

<b>Preface</b> .....	<b>iii</b>
ICD-10-CM Official Preface .....	iii
Characteristics of ICD-10-CM .....	iii
<b>How to Use ICD-10-CM Expert for Hospitals 2023</b> .....	<b>v</b>
Introduction .....	v
What's New for 2023 .....	v
Conversion Table .....	v
10 Steps to Correct Coding .....	v
Official ICD-10-CM Guidelines for Coding and Reporting .....	v
Indexes .....	v
Index to Diseases and Injuries .....	v
Neoplasm Table .....	v
Table of Drugs and Chemicals .....	v
External Causes Index .....	vi
Index Notations .....	vi
Tabular List of Diseases .....	vii
Code and Code Descriptions .....	vii
Tabular Notations .....	vii
Official Notations .....	vii
Optum360 Notations .....	viii
Icons .....	viii
Color Bars .....	x
Footnotes .....	x
Chapter-Level Notations .....	x
Appendixes .....	xi
Illustrations .....	xi
<b>What's New for 2023</b> .....	<b>xiii</b>
Official Updates .....	xiii
Proprietary Updates .....	xv
<b>Conversion Table of ICD-10-CM Codes</b> .....	<b>xvii</b>
<b>10 Steps to Correct Coding</b> .....	<b>xix</b>
<b>ICD-10-CM Official Guidelines for Coding and Reporting</b> .....	<b>Coding Guidelines–1</b>
<b>ICD-10-CM Index to Diseases and Injuries</b> .....	<b>1</b>
<b>ICD-10-CM Neoplasm Table</b> .....	<b>335</b>
<b>ICD-10-CM Table of Drugs and Chemicals</b> .....	<b>354</b>
<b>ICD-10-CM Index to External Causes</b> .....	<b>403</b>
<b>ICD-10-CM Tabular List of Diseases and Injuries</b> .....	<b>439</b>
Chapter 1. Certain Infectious and Parasitic Diseases (A00-B99) .....	439
Chapter 2. Neoplasms (C00-D49) .....	465
Chapter 3. Diseases of the Blood and Blood-forming Organs and Certain Disorders Involving the Immune Mechanism (D50-D89) .....	505
Chapter 4. Endocrine, Nutritional and Metabolic Diseases (E00-E89) .....	519
Chapter 5. Mental, Behavioral, and Neurodevelopmental Disorders (F01-F99) .....	543
Chapter 6. Diseases of the Nervous System (G00-G99) .....	571
Chapter 7. Diseases of the Eye and Adnexa (H00-H59) .....	595
Chapter 8. Diseases of the Ear and Mastoid Process (H60-H95) .....	633
Chapter 9. Diseases of the Circulatory System (I00-I99) .....	645
Chapter 10. Diseases of the Respiratory System (J00-J99) .....	691
Chapter 11. Diseases of the Digestive System (K00-K95) .....	709
Chapter 12. Diseases of the Skin and Subcutaneous Tissue (L00-L99) .....	735
Chapter 13. Diseases of the Musculoskeletal System and Connective Tissue (M00-M99) .....	757
Chapter 14. Diseases of the Genitourinary System (N00-N99) .....	845
Chapter 15. Pregnancy, Childbirth and the Puerperium (O00-O9A) .....	865
Chapter 16. Certain Conditions Originating in the Perinatal Period (P00-P96) .....	905
Chapter 17. Congenital Malformations, Deformations and Chromosomal Abnormalities (Q00-Q99) .....	919
Chapter 18. Symptoms, Signs and Abnormal Clinical and Laboratory Findings (R00-R99) .....	939
Chapter 19. Injury, Poisoning and Certain Other Consequences of External Causes (S00-T88) .....	961
Chapter 20. External Causes of Morbidity (V00-Y99) .....	1167
Chapter 21. Factors Influencing Health Status and Contact With Health Services (Z00-Z99) .....	1231
Chapter 22. Codes for Special Purposes (U00-U85) .....	1269
<b>Appendixes</b> .....	<b>Appendixes–1</b>
Appendix A: Valid 3-character ICD-10-CM Codes .....	Appendixes–1
Appendix B: Pharmacology List 2023 .....	Appendixes–3
Appendix C: Z Codes for Long-Term Drug Use with Associated Drugs .....	Appendixes–20
Appendix D: Major Complication and Comorbidity (MCC) Code List .....	Appendixes–22
Appendix E: Complication and Comorbidity (CC) Code List .....	Appendixes–27
Appendix F: Present on Admission (POA) Tutorial .....	Appendixes–47
Appendix G: Hospital Acquired Conditions .....	Appendixes–51
Appendix H: Centers for Medicare & Medicaid Services Hierarchical Condition Categories (CMS-HCC) .....	Appendixes–79
Appendix I: Long-term Care Hospital Prospective Payment System Overview .....	Appendixes–81
Appendix J: Long-Term Care Hospital Quality Reporting Program .....	Appendixes–84
Appendix K: Severe Wound Diagnosis Codes by Category .....	Appendixes–86
<b>Illustrations</b> .....	<b>Illustrations–1</b>
Chapter 3. Diseases of the Blood and Blood-forming Organs and Certain Disorders Involving the Immune Mechanism (D50–D89) .....	Illustrations–1
Red Blood Cells .....	Illustrations–1
White Blood Cell .....	Illustrations–1
Platelet .....	Illustrations–2
Coagulation .....	Illustrations–2
Spleen Anatomical Location and External Structures .....	Illustrations–3
Spleen Interior Structures .....	Illustrations–3
Chapter 4. Endocrine, Nutritional and Metabolic Diseases (E00–E89) .....	Illustrations–4
Endocrine System .....	Illustrations–4
Thyroid .....	Illustrations–5

Thyroid and Parathyroid Glands .....	Illustrations–5	Chapter 11. Diseases of the Digestive System	
Pancreas .....	Illustrations–6	(K00–K95) .....	Illustrations–29
Anatomy of the Adrenal Gland .....	Illustrations–6	Digestive System .....	Illustrations–29
Structure of an Ovary .....	Illustrations–7	Omentum and Mesentery .....	Illustrations–30
Testis and Associated Structures .....	Illustrations–7	Peritoneum and Retroperitoneum ...	Illustrations–30
Thymus .....	Illustrations–8	Chapter 12. Diseases of the Skin and Subcutaneous	
Chapter 6. Diseases of the Nervous System		Tissue (L00–L99) .....	Illustrations–31
(G00–G99) .....	Illustrations–9	Nail Anatomy .....	Illustrations–31
Brain .....	Illustrations–9	Skin and Subcutaneous Tissue .....	Illustrations–31
Cranial Nerves .....	Illustrations–9	Chapter 13. Diseases of the Musculoskeletal System	
Peripheral Nervous System .....	Illustrations–10	and Connective Tissue (M00–M99) .....	Illustrations–32
Spinal Cord and Spinal Nerves .....	Illustrations–11	Bones and Joints .....	Illustrations–32
Nerve Cell .....	Illustrations–12	Shoulder Anterior View .....	Illustrations–33
Chapter 7. Diseases of the Eye and Adnexa		Shoulder Posterior View .....	Illustrations–33
(H00–H59) .....	Illustrations–13	Elbow Anterior View .....	Illustrations–33
Eye .....	Illustrations–13	Elbow Posterior View .....	Illustrations–33
Posterior Pole of Globe/Flow of		Hand .....	Illustrations–33
Aqueous Humor .....	Illustrations–13	Hip Anterior View .....	Illustrations–34
Lacrimal System .....	Illustrations–14	Hip Posterior View .....	Illustrations–34
Eye Musculature .....	Illustrations–14	Knee Anterior View .....	Illustrations–34
Eyelid Structures .....	Illustrations–14	Knee Posterior View .....	Illustrations–34
Chapter 8. Diseases of the Ear and Mastoid		Foot .....	Illustrations–34
Process (H60–H95) .....	Illustrations–15	Muscles.....	Illustrations–35
Ear Anatomy .....	Illustrations–15	Chapter 14. Diseases of the Genitourinary	
Chapter 9. Diseases of the Circulatory		System (N00–N99) .....	Illustrations–36
System (I00–I99) .....	Illustrations–16	Urinary System .....	Illustrations–36
Anatomy of the Heart .....	Illustrations–16	Male Genitourinary System .....	Illustrations–37
Heart Cross Section .....	Illustrations–16	Female Internal Genitalia .....	Illustrations–37
Heart Valves .....	Illustrations–17	Female Genitourinary Tract Lateral	
Heart Conduction System .....	Illustrations–17	View .....	Illustrations–37
Coronary Arteries .....	Illustrations–18	Chapter 15. Pregnancy, Childbirth and the	
Arteries .....	Illustrations–19	Puerperium (O00–O9A) .....	Illustrations–38
Veins .....	Illustrations–20	Term Pregnancy – Single	
Internal Carotid and Vertebral		Gestation .....	Illustrations–38
Arteries and Branches .....	Illustrations–21	Twin Gestation–Dichorionic–	
External Carotid Artery and		Diamniotic (DI-DI) .....	Illustrations–38
Branches .....	Illustrations–21	Twin Gestation–Monochorionic–	
Branches of Abdominal Aorta .....	Illustrations–22	Diamniotic (MO-DI) .....	Illustrations–39
Portal Venous Circulation .....	Illustrations–22	Twin Gestation–Monochorionic–	
Lymphatic System .....	Illustrations–23	Monoamniotic (MO-MO) .....	Illustrations–39
Axillary Lymph Nodes .....	Illustrations–24	Chapter 19. Injury, Poisoning and Certain Other	
Lymphatic System of Head		Consequences of External Causes	
and Neck .....	Illustrations–24	(S00–T88) .....	Illustrations–40
Lymphatic Capillaries .....	Illustrations–25	Types of Fractures .....	Illustrations–40
Lymphatic Drainage .....	Illustrations–25	Salter-Harris Fracture Types .....	Illustrations–40
Chapter 10. Diseases of the Respiratory			
System (J00–J99) .....	Illustrations–26		
Respiratory System .....	Illustrations–26		
Upper Respiratory System .....	Illustrations–27		
Lower Respiratory System .....	Illustrations–27		
Paranasal Sinuses .....	Illustrations–27		
Lung Segments .....	Illustrations–28		
Alveoli .....	Illustrations–28		

## Code Also

A "code also" note alerts the coder that more than one code may be required to fully describe the condition. The sequencing depends on the circumstances of the encounter. Factors that may determine sequencing include severity and reason for the encounter.

## Revised Text

The revised text ►◄ "bow ties" alert the user to changes in official notations for the current year. Revised text may include the following:

- A change in a current parenthetical description
- A change in the code(s) associated with a current parenthetical note
- A change in how a current parenthetical note is classified (e.g., an Excludes 1 note that changed to an Excludes 2 note)
- Addition of a new parenthetical note(s) to a code

## Deleted Text

Strikethrough on official notations indicate a deletion from the classification for the current year.

## Optum360 Notations

### AHA Coding Clinic Citations

*Coding Clinics* are official American Hospital Association (AHA) publications that provide coding advice specific to ICD-10-CM and ICD-10-PCS.

*Coding Clinic* citations included in this manual are current up to the second quarter of 2021.

These citations identify the year, quarter, and page number of one or more *Coding Clinic* publications that may have coding advice relevant to a particular code or group of codes. With the most current citation listed first, these notations are preceded by the symbol **AHA:** and appear in purple type.

**I15.1 Hypertension secondary to other renal disorders**  
AHA: 2016, 3Q, 22

## Definitions

Definitions explain a specific term, condition, or disease process in layman's terms. These notations are preceded by the symbol **DEF:** and appear in purple type.

**M51.4 Schmorl's nodes**  
DEF: Irregular bone defect in the margin of the vertebral body that causes herniation into the end plate of the vertebral body.

## Coding Tips

The tips in the tabular list offer coding advice that is not readily available within the ICD-10-CM classification. It may relate official coding guidelines, indexing nuances, or advice from AHA's *Coding Clinic* for ICD-10-CM/PCS. These notations are preceded by the symbol **TIP:** and appear in brown type.

**B97.2 Coronavirus as the cause of diseases classified elsewhere**  
TIP: Do not report a code from this subcategory for COVID-19; refer to U07.1.

## Icons

**Note:** The following icons are placed to the left of the code.

### New Code

Codes that have been added to the classification effective October 1, 2022.

### New Code – Mid-year

Codes that have been added to the classification effective April 1, 2022.

### Revised Code

Codes that have had a change to their description or validity effective October 1, 2022. For additional information on codes with validity changes, see the "What's New" section.

### Revised Code – Mid-year

Codes that have had a change to their description or validity effective April 1, 2022.

### Additional Characters Required

✓4<sup>th</sup> This symbol indicates that the code requires a 4th character.

✓5<sup>th</sup> This symbol indicates that the code requires a 5th character.

✓6<sup>th</sup> This symbol indicates that the code requires a 6th character.

✓7<sup>th</sup> This symbol indicates that the code requires a 7th character.

**H60.3 Other infective otitis externa**  
**H60.31 Diffuse otitis externa**  
**H60.311 Diffuse otitis externa, right ear**  
**H60.312 Diffuse otitis externa, left ear**  
**H60.313 Diffuse otitis externa, bilateral**  
**H60.319 Diffuse otitis externa, unspecified ear**

### Placeholder Alert

This symbol indicates that the code requires a 7th character following the placeholder "X". Codes with fewer than six characters that require a 7th character must contain placeholder "X" to fill in the empty character(s).

✓X7<sup>th</sup> **T16.1 Foreign body in right ear**

This manual provides the most current information that was available at the time of publication. Except where otherwise noted, the icons and/or color bars reflect edits associated with the inpatient prospective payment system (IPPS). Because the fiscal 2021 IPPS final rule was not available at the time this book was printed, the edits in this manual are based on the proposed, version 39, MS-DRG grouper software, Definitions Manual files, and Medicare Code Editor (MCE) files, published with the fiscal 2022 IPPS proposed rule.

In an effort to provide the most current edit information, Optum360 has provided a searchable data file that includes the final edit designations for all ICD-10-CM codes based on the fiscal 2022 IPPS final rule official files, effective October 1, 2021. The edits included in the data file are as follows:

- Age
- Sex
- Hospital-acquired condition (HAC)
- CC
- MCC
- HIV
- Manifestation code
- Unacceptable principal diagnosis
- Questionable principal diagnosis

This data file can be accessed at the following:

<https://www.optum360coding.com/ProductUpdates/>

Title: "2022 ICD-10-CM for Hospital IPPS Data File"

Password: Hospital22

**Note:** The following icons are placed at the end of the code description.

### Age Edits

#### **N** Newborn Age: 0

These diagnoses are intended for newborns and neonates and the patient's age must be 0 years.

**N47.0** Adherent prepuce, newborn

#### **P** Pediatric Age: 0-17

These diagnoses are intended for children and the patient's age must be between 0 and 17 years.

**L21.1** Seborrheic infantile dermatitis

#### **M** Maternity Age: 9-64

These diagnoses are intended for childbearing patients between the age of 9 and 64 years.

**O02.9** Abnormal product of conception, unspecified

#### **A** Adult Age: 15-124

These diagnoses are intended for patients between the age of 15 and 124 years.

#### **R54** Age-related physical debility

Frailty  
Old age  
Senescence  
Senile asthenia  
Senile debility

**EXCLUDES1** age-related cognitive decline (R41.81)  
sarcopenia (M62.84)  
senile psychosis (F03)  
senility NOS (R41.81)

### Sex Edits

#### **♂** Male diagnosis only

**Q98.0** Klinefelter syndrome karyotype 47, XXY

#### **♀** Female diagnosis only

**N35.12** Postinfective urethral stricture, not elsewhere classified, female

### **H1 - H14** Hospital Acquired Condition (HAC)

These codes identify conditions that are high cost or high volume or both, are either a complication or comorbidity (CC) or major complication or comorbidity (MCC) that as a secondary diagnosis results in assignment of a case to a higher-paying MS-DRG. These conditions are reasonably preventable through the application of evidence-based guidelines. If the condition is not present on admission (meaning it developed during the hospital admission), the case will not group to the higher-paying MS-DRG based solely upon the reporting of the HAC code. Many of these HACs are conditional, and are based on reporting the specific diagnosis code(s) in combination with certain procedure codes.

**Note:** Hospital-acquired conditions do not impact MS-LTC-DRG assignment.

The comprehensive list of HAC tables that coincide with these icon numbers appears in appendix G of this book.

**N15.1** Renal and perinephric abscess

### **CC** CC Condition

This symbol designates a complication or comorbidity diagnosis that may affect DRG assignment. A complication or comorbidity diagnosis, CC condition, is defined as a significant acute disease, a significant acute manifestation of a chronic disease, an advanced or end-stage chronic disease, or a chronic disease associated with systemic physiological decompensation and debility that have consistently greater impact on hospital resources.

A comprehensive list of ICD-10-CM codes considered a CC appears in appendix E of this book.

**G90.59** Complex regional pain syndrome I of other specified site

### **MCC** MCC Condition

This symbol designates a major complication or comorbidity diagnosis that may affect DRG assignment. An MCC condition meets the same criteria as a CC condition but is associated with a higher acuity level and hospital resource consumption is expected to be higher than that for a CC condition. There are fewer conditions that meet the criteria as an MCC than those for a CC condition.

A comprehensive list of ICD-10-CM codes considered an MCC appears in appendix D of this book.

**S35.238** Other injury of inferior mesenteric artery

**Note:** The assignment of an MS-DRG or MS-LTC-DRG often depends on the presence or absence of a secondary diagnosis code that is designated as an MCC or CC. However, in some instances the MCC or CC designation for that secondary diagnosis code is negated due to its relationship with the principal diagnosis; this is referred to as CC exclusion. The ICD-10 MS-DRG Definitions Manual included with the IPPS final rule provides a list of all principal diagnosis codes that would render ineffective the MCC/CC designation for a particular ICD-10-CM code when used as a secondary diagnosis. Optum360 has provided this CC exclusion list in an easily searchable data file, which can be accessed at the following:

<https://www.optum360coding.com/ProductUpdates/>  
Title: "2022 ICD-10-CM for Hospitals CC Excludes Data File"  
Password: Hospital22

### **UNS** Unspecified Site

Identifies codes that are considered an MCC or CC but lack specificity in regard to their anatomical location. The medical record documentation should be reviewed carefully, to ensure that no other code within the same category or subcategory can be assigned for greater specificity.

### **UPD** Unacceptable Principal Diagnosis

This symbol identifies codes that should not be assigned as principal diagnosis for inpatient admissions. Codes with an unacceptable principal diagnosis edit are considered supplementary — describing circumstances that influence an individual's health status or an additional code — identifying conditions that are not specific manifestations but may be due to an underlying cause.

**T48.5X5** Adverse effect of other anti-common-cold drugs

### **HIV** HIV-related Condition

This symbol indicates that the condition is considered a major HIV-related diagnosis. When the condition is coded in combination with a diagnosis of human immunodeficiency virus (HIV), code B20, the case will move from MS-DRG/MS-LTC-DRG 977 to MS-DRGs/MS-LTC-DRGs 974-976.

**G96.9** Disorder of central nervous system, unspecified

New for 2023



# 10 Steps to Correct Coding

Follow the 10 steps below to correctly code encounters for health care services.

## Step 1: Identify the reason for the visit or encounter (i.e., a sign, symptom, diagnosis and/or condition).

The medical record documentation should accurately reflect the patient's condition, using terminology that includes specific diagnoses and symptoms or clearly states the reasons for the encounter.

Choosing the main term that best describes the reason chiefly responsible for the service provided is the most important step in coding. If symptoms are present and documented but a definitive diagnosis has not yet been determined, code the symptoms. *For outpatient cases, do not code conditions that are referred to as "rule out," "suspected," "probable," or "questionable."* Diagnoses often are not established at the time of the initial encounter/visit and may require two or more visits to be established. Code only what is documented in the available outpatient records and only to the highest degree of certainty known at the time of the patient's visit. For inpatient medical records, uncertain diagnoses may be reported if documented at the time of discharge.

## Step 2: After selecting the reason for the encounter, consult the alphabetic index.

The most critical rule is to begin code selection in the alphabetic index. Never turn first to the tabular list. The index provides cross-references, essential and nonessential modifiers, and other instructional notations that may not be found in the tabular list.

## Step 3: Locate the main term entry.

The alphabetic index lists conditions, which may be expressed as nouns or eponyms, with critical use of adjectives. Some conditions known by several names have multiple main entries. Reasons for encounters may be located under general terms such as admission, encounter, and examination. Other general terms such as history, status (post), or presence (of) can be used to locate other factors influencing health.

## Step 4: Scan subterm entries.

Scan the subterm entries, as appropriate, being sure to review continued lines and additional subterms that may appear in the next column or on the next page. Shaded vertical guidelines in the index indicate the indentation level for each subterm in relation to the main terms.

## Step 5: Pay close attention to index instructions.

- Parentheses ( ) enclose nonessential modifiers, terms that are supplementary words or explanatory information that may or may not appear in the diagnostic statement and do not affect code selection.
- Brackets [ ] enclose manifestation codes that can be used only as secondary codes to the underlying condition code immediately preceding it. If used, manifestation codes must be reported with the appropriate etiology codes.
- Default codes are listed next to the main term and represent the condition most commonly associated with the main term or the unspecified code for the main term.
- "See" cross-references, identified by italicized type and "code by" cross-references indicate that another term *must be referenced* to locate the correct code.
- "See also" cross-references, identified by italicized type, provide alternative terms that may be useful to look up but *are not mandatory*.
- "Omit code" cross-references identify instances when a code is not applicable depending on the condition being coded.
- "With" subterms are listed out of alphabetic order and identify a presumed causal relationship between the two conditions they link.

- "Due to" subterms identify a relationship between the two conditions they link.
- "NEC," abbreviation for "not elsewhere classified," follows some main terms or subterms and indicates that there is no specific code for the condition even though the medical documentation may be very specific.
- "NOS," abbreviation for "not otherwise specified," follows some main terms or subterms and is the equivalent of unspecified; NOS signifies that the information in the medical record is insufficient for assigning a more specific code.
- *Following* references help coders locate alphanumeric codes that are out of sequence in the tabular section.
- Check-additional-character symbols flag codes that require additional characters to make the code valid; the characters available to complete the code should be verified in the tabular section.

## Step 6: Choose a potential code and locate it in the tabular list.

To prevent coding errors, always use both the alphabetic index (to identify a code) and the tabular list (to verify a code), as the index does not include the important instructional notes found in the tabular list. An added benefit of using the tabular list, which groups like things together, is that while looking at one code in the list, a coder might see a more specific one that would have been missed had the coder relied solely on the alphabetic index. Additionally, many of the codes require a fourth, fifth, sixth, or seventh character to be valid, and many of these characters can be found only in the tabular list.

## Step 7: Read all instructional material in the tabular section.

The coder must follow any Includes, Excludes 1 and Excludes 2 notes, and other instructional notes, such as "Code first" and "Use additional code," listed in the tabular list for the chapter, category, subcategory, and subclassification levels of code selection that direct the coder to use a different or additional code. Any codes in the tabular range A00.0- through T88.9- may be used to identify the diagnostic reason for the encounter. The tabular list encompasses many codes describing disease and injury classifications (e.g., infectious and parasitic diseases, neoplasms, symptoms, nervous and circulatory system etc.).

Codes that describe symptoms and signs, as opposed to definitive diagnoses, should be reported when an established diagnosis has not been made (confirmed) by the physician. Chapter 18 of the ICD-10-CM code book, "Symptoms, Signs, and Abnormal Clinical and Laboratory Findings, Not Elsewhere Classified" (codes R00.-R99), contains many, but not all, codes for symptoms.

ICD-10-CM classifies encounters with health care providers for circumstances other than a disease or injury in chapter 21, "Factors Influencing Health Status and Contact with Health Services" (codes Z00-Z99). Circumstances other than a disease or injury often are recorded as chiefly responsible for the encounter.

A code is invalid if it does not include the full number of characters (greatest level of specificity) required. Codes in ICD-10-CM can contain from three to seven alphanumeric characters. A three-character code is to be used only if the category is not further subdivided into four-, five-, six-, or seven-character codes. Placeholder character X is used as part of an alphanumeric code to allow for future expansion and as a placeholder for empty characters in a code that requires a seventh character but has no fourth, fifth, or sixth character. Note that certain categories require seventh characters that apply to all codes in that category. Always check the category level for applicable seventh characters for that category.

**Adhesions, adhesive** — *continued*

mesenteric — *see* Adhesions, peritoneum  
 nasal (septum) (to turbinates) J34.89  
 ocular muscle — *see* Strabismus, mechanical  
 omentum — *see* Adhesions, peritoneum  
 ovary N73.6  
   congenital (to cecum, kidney or omentum) Q50.39  
 paraovarian N73.6  
 pelvic (peritoneal)  
   female N73.6  
     postprocedural N99.4  
   male — *see* Adhesions, peritoneum  
   postpartal (old) N73.6  
   tuberculous A18.17  
 penis to scrotum (congenital) Q55.8  
 periappendiceal — *see also* Adhesions, peritoneum  
 pericardium (nonrheumatic) I31.0  
   focal I31.8  
   rheumatic I09.2  
   tuberculous A18.84  
 pericholecystic K82.8  
 perigastric — *see* Adhesions, peritoneum  
 periovarian N73.6  
 periprosthetic N42.89  
 perirectal — *see* Adhesions, peritoneum  
 perirenal N28.89  
 peritoneum, peritoneal (postinfective) K66.0  
   with obstruction (intestinal) K56.50  
     complete K56.52  
     incomplete K56.51  
     partial K56.51  
   congenital Q43.3  
   pelvic, female N73.6  
     postprocedural N99.4  
   postpartal, pelvic N73.6  
   postprocedural K66.0  
   to uterus N73.6  
 peritubal N73.6  
 periureteral N28.89  
 periuterine N73.6  
 perivesical N32.89  
 perivesicular (seminal vesicle) N50.89  
 pleura, pleuritic J94.8  
   tuberculous NEC A15.6  
 pleuropericardial J94.8  
 postoperative (gastrointestinal tract) K66.0  
   with obstruction — *see also* Obstruction, intestine,  
   postoperative K91.30  
   due to foreign body accidentally left in wound —  
   *see* Foreign body, accidentally left during a  
   procedure  
   pelvic peritoneal N99.4  
   urethra — *see* Stricture, urethra, postprocedural  
   vagina N99.2  
 postpartal, old (vulva or perineum) N90.89  
 preputial, prepuce N47.5  
 pulmonary J98.4  
 pylorus — *see* Adhesions, peritoneum  
 sciatic nerve — *see* Lesion, nerve, sciatic  
 seminal vesicle N50.89  
 shoulder (joint) — *see* Capsulitis, adhesive  
 sigmoid flexure — *see* Adhesions, peritoneum  
 spermatic cord (acquired) N50.89  
   congenital Q55.4  
 spinal canal G96.12  
 stomach — *see* Adhesions, peritoneum  
 subcapsular — *see* Capsulitis, adhesive  
 temporomandibular M26.61- ☒  
 tendinitis (*see also* Tenosynovitis, specified type NEC)  
 shoulder — *see* Capsulitis, adhesive  
 testis N44.8  
 tongue, congenital (to gum or roof of mouth) Q38.3  
   acquired K14.8  
 trachea J39.8  
 tubo-ovarian N73.6  
 tunica vaginalis N44.8  
 uterus N73.6  
   internal N85.6  
   to abdominal wall N73.6  
 vagina (chronic) N89.5  
   postoperative N99.2  
 vitreomacular H43.82- ☒  
 vitreous H43.89  
 vulva N90.89

**Adiaspiromycosis** B48.8

**Adie (-Holmes) pupil or syndrome** — *see* Anomaly,  
 pupil, function, tonic pupil

**Adiponecrosis neonatorum** P83.88**Adiposis** — *see also* Obesity

cerebralis E23.6  
 dolorosa E88.2

**Adiposity** — *see also* Obesity

heart — *see* Degeneration, myocardial  
 localized E65

**Adiposogenital dystrophy** E23.6**Adjustment**

disorder — *see* Disorder, adjustment  
 implanted device — *see* Encounter (for), adjustment  
   (of)  
 prosthesis, external — *see* Fitting  
 reaction — *see* Disorder, adjustment

**Administration of tPA (rtPA)** in a different facility within  
 the last 24 hours prior to admission to current facility Z92.82**Admission (for)** — *see also* Encounter (for)

adjustment (of)  
 artificial  
   arm Z44.00- ☒  
     complete Z44.01- ☒  
     partial Z44.02- ☒  
   eye Z44.2 ☒  
   leg Z44.10- ☒  
     complete Z44.11- ☒  
     partial Z44.12- ☒  
 brain neuropacemaker Z46.2  
   implanted Z45.42  
 breast  
   implant Z45.81 ☒  
   prosthesis (external) Z44.3 ☒  
 colostomy belt Z46.89  
 contact lenses Z46.0  
 cystostomy device Z46.6  
 dental prosthesis Z46.3  
 device NEC  
   abdominal Z46.89  
   implanted Z45.89  
   cardiac Z45.09  
     defibrillator (with synchronous cardiac  
     pacemaker) Z45.02  
     pacemaker (cardiac resynchronization  
     therapy (CRT-P)) Z45.018  
     pulse generator Z45.010  
     resynchronization therapy defibrillator  
     (CRT-D) Z45.02  
   hearing device Z45.328  
     bone conduction Z45.320  
     cochlear Z45.321  
   infusion pump Z45.1  
   nervous system Z45.49  
   CSF drainage Z45.41  
   hearing device — *see* Admission, adjust-  
   ment, device, implanted, hearing  
   device  
   neuropacemaker Z45.42  
   visual substitution Z45.31  
   specified NEC Z45.89  
   vascular access Z45.2  
   visual substitution Z45.31  
 nervous system Z46.2  
   implanted — *see* Admission, adjustment,  
   device, implanted, nervous system  
 orthodontic Z46.4  
 prosthetic Z44.9  
   arm — *see* Admission, adjustment, artificial,  
   arm  
   breast Z44.3 ☒  
   dental Z46.3  
   eye Z44.2 ☒  
   leg — *see* Admission, adjustment, artificial,  
   leg  
   specified type NEC Z44.8  
 substitution  
   auditory Z46.2  
     implanted — *see* Admission, adjustment,  
     device, implanted, hearing device  
   nervous system Z46.2  
     implanted — *see* Admission, adjustment,  
     device, implanted, nervous system  
   visual Z46.2  
     implanted Z45.31  
   urinary Z46.6  
 hearing aid Z46.1  
   implanted — *see* Admission, adjustment, device,  
   implanted, hearing device  
 ileostomy device Z46.89  
 intestinal appliance or device NEC Z46.89

**Admission** — *continued*

adjustment — *continued*  
 neuropacemaker (brain) (peripheral nerve) (spinal  
 cord) Z46.2  
   implanted Z45.42  
 orthodontic device Z46.4  
 orthopedic (brace) (cast) (device) (shoes) Z46.89  
 pacemaker (cardiac resynchronization therapy (CRT-  
 P))  
   cardiac Z45.018  
   pulse generator Z45.010  
   nervous system Z46.2  
   implanted Z45.42  
 portacath (port-a-cath) Z45.2  
 prosthesis Z44.9  
   arm — *see* Admission, adjustment, artificial, arm  
   breast Z44.3 ☒  
   dental Z46.3  
   eye Z44.2 ☒  
   leg — *see* Admission, adjustment, artificial, leg  
   specified NEC Z44.8  
 spectacles Z46.0  
 aftercare — *see also* Aftercare Z51.89  
 postpartum  
   immediately after delivery Z39.0  
   routine follow-up Z39.2  
 radiation therapy (antineoplastic) Z51.0  
 attention to artificial opening (of) Z43.9  
 artificial vagina Z43.7  
 colostomy Z43.3  
 cystostomy Z43.5  
 enterostomy Z43.4  
 gastrostomy Z43.1  
 ileostomy Z43.2  
 jejunostomy Z43.4  
 nephrostomy Z43.6  
 specified site NEC Z43.8  
   intestinal tract Z43.4  
   urinary tract Z43.6  
 tracheostomy Z43.0  
 ureterostomy Z43.6  
 urethrostomy Z43.6  
 breast augmentation or reduction Z41.1  
 breast reconstruction following mastectomy Z42.1  
 change of  
   dressing (nonsurgical) Z48.00  
   neuropacemaker device (brain) (peripheral nerve)  
   (spinal cord) Z46.2  
   implanted Z45.42  
   surgical dressing Z48.01  
 circumcision, ritual or routine (in absence of diagnosis)  
 Z41.2  
 clinical research investigation (control) (normal com-  
 parison) (participant) Z00.6  
 contraceptive management NEC Z30.9  
 cosmetic surgery NEC Z41.1  
 counseling — *see also* Counseling  
   dietary Z71.3  
   gestational carrier Z31.7  
   HIV Z71.7  
   human immunodeficiency virus Z71.8  
   nonattending third party Z71.0  
   procreative management NEC Z31.69  
 delivery, full-term, uncomplicated O80  
   cesarean, without indication O82  
 desensitization to allergens Z51.6  
 dietary surveillance and counseling Z71.3  
 ear piercing Z41.3  
 examination at health care facility (adult) — *see also*  
   Examination Z00.00  
   with abnormal findings Z00.01  
   clinical research investigation (control) (normal  
   comparison) (participant) Z00.6  
   dental Z01.20  
     with abnormal findings Z01.21  
   donor (potential) Z00.5  
   ear Z01.10  
     with abnormal findings NEC Z01.118  
   eye Z01.00  
     with abnormal findings Z01.01  
     following failed vision screening Z01.020  
     with abnormal findings Z01.021  
   general, specified reason NEC Z00.8  
   hearing Z01.10  
     with abnormal findings NEC Z01.118  
   infant or child (over 28 days old) Z00.129  
     with abnormal findings Z00.121  
   postpartum checkup Z39.2

- D57.212 Sickle-cell/Hb-C disease with splenic sequestration** MCC HCC
- D57.213 Sickle-cell/Hb-C disease with cerebral vascular involvement** MCC HCC  
Code also, if applicable, cerebral infarction (I63.-)
- D57.218 Sickle-cell/Hb-C disease with crisis with other specified complication** MCC HCC  
Use additional code to identify complications, such as:  
cholelithiasis (K80.-)  
priapism (N48.32)
- D57.219 Sickle-cell/Hb-C disease with crisis, unspecified** MCC HCC  
Sickle-cell/Hb-C disease with crisis NOS  
Sickle-cell/Hb-C disease with vasoocclusive pain NOS
- D57.3 Sickle-cell trait** HCC  
Hb-S trait  
Heterozygous hemoglobin S  
**DEF:** Heterozygous genetic makeup characterized by one gene for normal hemoglobin and one for sickle-cell hemoglobin. The clinical disease is rarely present.
- √ 5th **D57.4 Sickle-cell thalassemia**  
Sickle-cell beta thalassemia  
Thalassemia Hb-S disease  
**AHA:** 2020,4Q,6-7
- D57.40 Sickle-cell thalassemia without crisis** HCC  
Microdrpanocytosis  
Sickle-cell thalassemia NOS
- √ 6th **D57.41 Sickle-cell thalassemia, unspecified, with crisis**  
Sickle-cell thalassemia with (painful) crisis NOS  
Sickle-cell thalassemia with vasoocclusive pain NOS
- D57.411 Sickle-cell thalassemia, unspecified, with acute chest syndrome** MCC HCC
- D57.412 Sickle-cell thalassemia, unspecified, with splenic sequestration** MCC HCC
- D57.413 Sickle-cell thalassemia, unspecified, with cerebral vascular involvement** MCC HCC  
Code also, if applicable cerebral infarction (I63.-)
- D57.418 Sickle-cell thalassemia, unspecified, with crisis with other specified complication** MCC HCC  
Use additional code to identify complications, such as:  
cholelithiasis (K80.-)  
priapism (N48.32)
- D57.419 Sickle-cell thalassemia, unspecified, with crisis** MCC HCC  
Sickle-cell thalassemia with (painful) crisis NOS  
Sickle-cell thalassemia with vasoocclusive pain NOS
- D57.42 Sickle-cell thalassemia beta zero without crisis** HCC  
HbS-beta zero without crisis  
Sickle-cell beta zero without crisis
- √ 6th **D57.43 Sickle-cell thalassemia beta zero with crisis**  
HbS-beta zero with crisis  
Sickle-cell beta zero with crisis
- D57.431 Sickle-cell thalassemia beta zero with acute chest syndrome** MCC HCC  
HbS-beta zero with acute chest syndrome  
Sickle-cell beta zero with acute chest syndrome
- D57.432 Sickle-cell thalassemia beta zero with splenic sequestration** MCC HCC  
HbS-beta zero with splenic sequestration  
Sickle-cell beta zero with splenic sequestration

- D57.433 Sickle-cell thalassemia beta zero with cerebral vascular involvement** MCC HCC  
HbS-beta zero with cerebral vascular involvement  
Sickle-cell beta zero with cerebral vascular involvement  
Code also, if applicable cerebral infarction (I63.-)
- D57.438 Sickle-cell thalassemia beta zero with crisis with other specified complication** MCC HCC  
HbS-beta zero with other specified complication  
Sickle-cell beta zero with other specified complication  
Use additional code to identify complications, such as:  
cholelithiasis (K80.-)  
priapism (N48.32)
- D57.439 Sickle-cell thalassemia beta zero with crisis, unspecified** MCC HCC  
HbS-beta zero with other specified complication  
Sickle-cell beta zero with crisis unspecified  
Sickle-cell thalassemia beta zero with (painful) crisis NOS  
Sickle-cell thalassemia beta zero with vasoocclusive pain NOS
- D57.44 Sickle-cell thalassemia beta plus without crisis** HCC  
HbS-beta plus without crisis  
Sickle-cell beta plus without crisis
- √ 6th **D57.45 Sickle-cell thalassemia beta plus with crisis**  
HbS-beta plus with crisis  
Sickle-cell beta plus with crisis
- D57.451 Sickle-cell thalassemia beta plus with acute chest syndrome** MCC HCC  
HbS-beta plus with acute chest syndrome  
Sickle-cell beta plus with acute chest syndrome
- D57.452 Sickle-cell thalassemia beta plus with splenic sequestration** MCC HCC  
HbS-beta plus with splenic sequestration  
Sickle-cell beta plus with splenic sequestration
- D57.453 Sickle-cell thalassemia beta plus with cerebral vascular involvement** MCC HCC  
HbS-beta plus with cerebral vascular involvement  
Sickle-cell beta plus with cerebral vascular involvement  
Code also, if applicable cerebral infarction (I63.-)
- D57.458 Sickle-cell thalassemia beta plus with crisis with other specified complication** MCC HCC  
HbS-beta plus with crisis with other specified complication  
Sickle-cell beta plus with crisis with other specified complication  
Use additional code to identify complications, such as:  
cholelithiasis (K80.-)  
priapism (N48.32)
- D57.459 Sickle-cell thalassemia beta plus with crisis, unspecified** MCC HCC  
HbS-beta plus with crisis with unspecified complication  
Sickle-cell beta plus with crisis with unspecified complication  
Sickle-cell thalassemia beta plus with (painful) crisis NOS  
Sickle-cell thalassemia beta plus with vasoocclusive pain NOS



**G45.4 Transient global amnesia****EXCLUDES 1** amnesia NOS (R41.3)**G45.8 Other transient cerebral ischemic attacks and related syndromes****G45.9 Transient cerebral ischemic attack, unspecified**Spasm of cerebral artery  
TIA  
Transient cerebral ischemia NOS**✓4# G46 Vascular syndromes of brain in cerebrovascular diseases**

Code first underlying cerebrovascular disease (I60-I69)

**G46.0 Middle cerebral artery syndrome****G46.1 Anterior cerebral artery syndrome****G46.2 Posterior cerebral artery syndrome****G46.3 Brain stem stroke syndrome**Benedikt syndrome  
Claude syndrome  
Foville syndrome  
Millard-Gubler syndrome  
Wallenberg syndrome  
Weber syndrome**G46.4 Cerebellar stroke syndrome****G46.5 Pure motor lacunar syndrome****G46.6 Pure sensory lacunar syndrome****G46.7 Other lacunar syndromes****G46.8 Other vascular syndromes of brain in cerebrovascular diseases****✓4# G47 Sleep disorders****EXCLUDES 2** nightmares (F51.5)  
nonorganic sleep disorders (F51.-)  
sleep terrors (F51.4)  
sleepwalking (F51.3)**✓5# G47.0 Insomnia****EXCLUDES 2** alcohol related insomnia (F10.182, F10.282, F10.982)  
drug-related insomnia (F11.182, F11.282, F11.982, F13.182, F13.282, F13.982, F14.182, F14.282, F14.982, F15.182, F15.282, F15.982, F19.182, F19.282, F19.982)  
idiopathic insomnia (F51.01)  
insomnia due to a mental disorder (F51.05)  
insomnia not due to a substance or known physiological condition (F51.0-)  
nonorganic insomnia (F51.0-)  
primary insomnia (F51.01)  
sleep apnea (G47.3-)**G47.00 Insomnia, unspecified**

Insomnia NOS

**G47.01 Insomnia due to medical condition**

Code also associated medical condition

**G47.09 Other insomnia****✓5# G47.1 Hypersomnia****EXCLUDES 2** alcohol-related hypersomnia (F10.182, F10.282, F10.982)  
drug-related hypersomnia (F11.182, F11.282, F11.982, F13.182, F13.282, F13.982, F14.182, F14.282, F14.982, F15.182, F15.282, F15.982, F19.182, F19.282, F19.982)  
hypersomnia due to a mental disorder (F51.13)  
hypersomnia not due to a substance or known physiological condition (F51.1-)  
primary hypersomnia (F51.11)  
sleep apnea (G47.3-)**G47.10 Hypersomnia, unspecified**

Hypersomnia NOS

**G47.11 Idiopathic hypersomnia with long sleep time**

Idiopathic hypersomnia NOS

**G47.12 Idiopathic hypersomnia without long sleep time****G47.13 Recurrent hypersomnia**Kleine-Levin syndrome  
Menstrual related hypersomnia**G47.14 Hypersomnia due to medical condition**

Code also associated medical condition

**G47.19 Other hypersomnia****✓5# G47.2 Circadian rhythm sleep disorders**

Disorders of the sleep wake schedule

Inversion of nyctohemeral rhythm

Inversion of sleep rhythm

**DEF:** Circadian rhythm: Daily cycle (24-hour period) of physical, mental, and behavioral changes. It is largely influenced by environmental cues, such as changes in light or temperature.**Synonym(s):** sleep/wake cycle.**G47.20 Circadian rhythm sleep disorder, unspecified type**

Sleep wake schedule disorder NOS

**G47.21 Circadian rhythm sleep disorder, delayed sleep phase type**

Delayed sleep phase syndrome

**G47.22 Circadian rhythm sleep disorder, advanced sleep phase type****G47.23 Circadian rhythm sleep disorder, irregular sleep wake type**

Irregular sleep-wake pattern

**G47.24 Circadian rhythm sleep disorder, free running type**

Circadian rhythm sleep disorder, non-24-hour sleep-wake type

**G47.25 Circadian rhythm sleep disorder, jet lag type****G47.26 Circadian rhythm sleep disorder, shift work type****G47.27 Circadian rhythm sleep disorder in conditions classified elsewhere**

Code first underlying condition

**G47.29 Other circadian rhythm sleep disorder****✓5# G47.3 Sleep apnea**

Code also any associated underlying condition

**EXCLUDES 1** apnea NOS (R06.81)  
Cheyne-Stokes breathing (R06.3)  
pickwickian syndrome (E66.2)  
sleep apnea of newborn (P28.3)**G47.30 Sleep apnea, unspecified**

Sleep apnea NOS

**G47.31 Primary central sleep apnea**

Idiopathic central sleep apnea

**G47.32 High altitude periodic breathing****G47.33 Obstructive sleep apnea (adult) (pediatric)**

Obstructive sleep apnea hypopnea

**EXCLUDES 1** obstructive sleep apnea of newborn (P28.3)**G47.34 Idiopathic sleep related nonobstructive alveolar hypoventilation**

Sleep related hypoxia

**G47.35 Congenital central alveolar hypoventilation syndrome****G47.36 Sleep related hypoventilation in conditions classified elsewhere**

Sleep related hypoxemia in conditions classified elsewhere

Code first underlying condition

**G47.37 Central sleep apnea in conditions classified elsewhere**

Code first underlying condition

**G47.39 Other sleep apnea****✓5# G47.4 Narcolepsy and cataplexy****✓6# G47.41 Narcolepsy****G47.411 Narcolepsy with cataplexy****G47.419 Narcolepsy without cataplexy**

Narcolepsy NOS

**✓6# G47.42 Narcolepsy in conditions classified elsewhere**

Code first underlying condition

**G47.421 Narcolepsy in conditions classified elsewhere with cataplexy****G47.429 Narcolepsy in conditions classified elsewhere without cataplexy****✓5# G47.5 Parasomnia****EXCLUDES 1** alcohol induced parasomnia (F10.182, F10.282, F10.982)  
drug induced parasomnia (F11.182, F11.282, F11.982, F13.182, F13.282, F13.982, F14.182, F14.282, F14.982, F15.182, F15.282, F15.982, F19.182, F19.282, F19.982)  
parasomnia not due to a substance or known physiological condition (F51.8)**G47.50 Parasomnia, unspecified**

Parasomnia NOS

**G47.51 Confusional arousals**

✓4<sup>th</sup> **L90 Atrophic disorders of skin****L90.0 Lichen sclerosus et atrophicus**

**EXCLUDES 2** lichen sclerosus of external female genital organs (N90.4)  
lichen sclerosus of external male genital organs (N48.0)

**L90.1 Anetoderma of Schweneringer-Buzzi****L90.2 Anetoderma of Jadassohn-Pellizzari****L90.3 Atrophoderma of Pasini and Pierini****L90.4 Acrodermatitis chronica atrophicans****L90.5 Scar conditions and fibrosis of skin**

Adherent scar (skin)  
Cicatrix  
Disfigurement of skin due to scar  
Fibrosis of skin NOS  
Scar NOS

**EXCLUDES 2** hypertrophic scar (L91.0)  
keloid scar (L91.0)

**AHA:** 2016,2Q,5; 2015,1Q,19

**L90.6 Striae atrophicae****L90.8 Other atrophic disorders of skin****L90.9 Atrophic disorder of skin, unspecified**✓4<sup>th</sup> **L91 Hypertrophic disorders of skin****L91.0 Hypertrophic scar**

Keloid  
Keloid scar  
**EXCLUDES 2** acne keloid (L73.0)  
scar NOS (L90.5)

**DEF:** Overgrowth of scar tissue due to excess amounts of collagen during connective tissue repair, occurring mainly on the upper trunk and face.

**L91.8 Other hypertrophic disorders of the skin****L91.9 Hypertrophic disorder of the skin, unspecified**✓4<sup>th</sup> **L92 Granulomatous disorders of skin and subcutaneous tissue**

**EXCLUDES 2** actinic granuloma (L57.5)

**L92.0 Granuloma annulare**

Perforating granuloma annulare

**L92.1 Necrobiosis lipoidica, not elsewhere classified**

**EXCLUDES 1** necrobiosis lipoidica associated with diabetes mellitus (E08-E13 with .620)

**L92.2 Granuloma faciale [eosinophilic granuloma of skin]****L92.3 Foreign body granuloma of the skin and subcutaneous tissue**  
Use additional code to identify the type of retained foreign body (Z18.-)**L92.8 Other granulomatous disorders of the skin and subcutaneous tissue****L92.9 Granulomatous disorder of the skin and subcutaneous tissue, unspecified**

**EXCLUDES 2** umbilical granuloma (P83.81)

**AHA:** 2017,4Q,21-22

✓4<sup>th</sup> **L93 Lupus erythematosus**

Use additional code for adverse effect, if applicable, to identify drug (T36-T50 with fifth or sixth character 5)

**EXCLUDES 1** lupus exedens (A18.4)  
lupus vulgaris (A18.4)  
scleroderma (M34.-)  
systemic lupus erythematosus (M32.-)

**DEF:** Inflammatory, autoimmune skin condition in which the body's autoimmune system attacks healthy tissue of the integumentary system.

**L93.0 Discoid lupus erythematosus**

Lupus erythematosus NOS

**L93.1 Subacute cutaneous lupus erythematosus****L93.2 Other local lupus erythematosus**

Lupus erythematosus profundus  
Lupus panniculitis

✓4<sup>th</sup> **L94 Other localized connective tissue disorders**

**EXCLUDES 1** systemic connective tissue disorders (M30-M36)

**L94.0 Localized scleroderma [morphea]**

Circumscribed scleroderma

**L94.1 Linear scleroderma**

En coup de sabre lesion

**L94.2 Calcinosis cutis****L94.3 Sclerodactyly****L94.4 Gottron's papules****L94.5 Poikiloderma vasculare atrophicans****L94.6 Ainhum****L94.8 Other specified localized connective tissue disorders****L94.9 Localized connective tissue disorder, unspecified**✓4<sup>th</sup> **L95 Vasculitis limited to skin, not elsewhere classified**

**EXCLUDES 1** angioma serpiginosum (L81.7)  
Henoch(-Schönlein) purpura (D69.0)  
hypersensitivity angiitis (M31.0)  
lupus panniculitis (L93.2)  
panniculitis NOS (M79.3)  
panniculitis of neck and back (M54.0-)  
polyarteritis nodosa (M30.0)  
relapsing panniculitis (M35.6)  
rheumatoid vasculitis (M05.2)  
serum sickness (T80.6-)  
urticaria (L50.-)  
Wegener's granulomatosis (M31.3-)

**L95.0 Livedoid vasculitis**

Atrophie blanche (en plaque)

**L95.1 Erythema elevatum diutinum****L95.8 Other vasculitis limited to the skin****L95.9 Vasculitis limited to the skin, unspecified**✓4<sup>th</sup> **L97 Non-pressure chronic ulcer of lower limb, not elsewhere classified**

**INCLUDES** chronic ulcer of skin of lower limb NOS  
non-healing ulcer of skin  
non-infected sinus of skin  
trophic ulcer NOS  
tropical ulcer NOS  
ulcer of skin of lower limb NOS

Code first any associated underlying condition, such as:

any associated gangrene (I96)  
atherosclerosis of the lower extremities (I70.23-, I70.24-, I70.33-, I70.34-, I70.43-, I70.44-, I70.53-, I70.54-, I70.63-, I70.64-, I70.73-, I70.74-)  
chronic venous hypertension (I87.31-, I87.33-)  
diabetic ulcers (E08.621, E08.622, E09.621, E09.622, E10.621, E10.622, E11.621, E11.622, E13.621, E13.622)  
postphlebotic syndrome (I87.01-, I87.03-)  
postthrombotic syndrome (I87.01-, I87.03-)  
varicose ulcer (I83.0-, I83.2-)

**EXCLUDES 2** pressure ulcer (pressure area) (L89.-)  
skin infections (L00-L08)  
specific infections classified to A00-B99

**AHA:** 2021,1Q,7; 2020,2Q,19; 2018,4Q,69; 2017,4Q,17

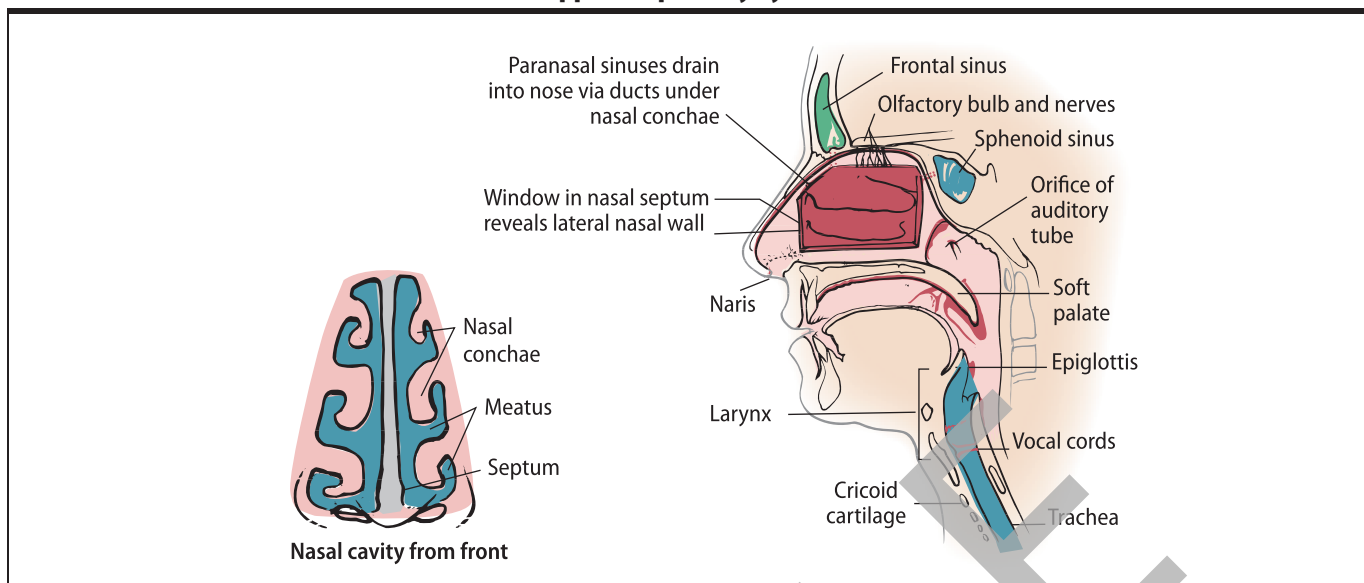
**TIP:** The depth and/or severity of a diagnosed nonpressure ulcer can be determined based on medical record documentation from clinicians who are not the patient's provider.

**TIP:** Assign a code from this category/subcategory for nonpressure ulcers documented as acute.

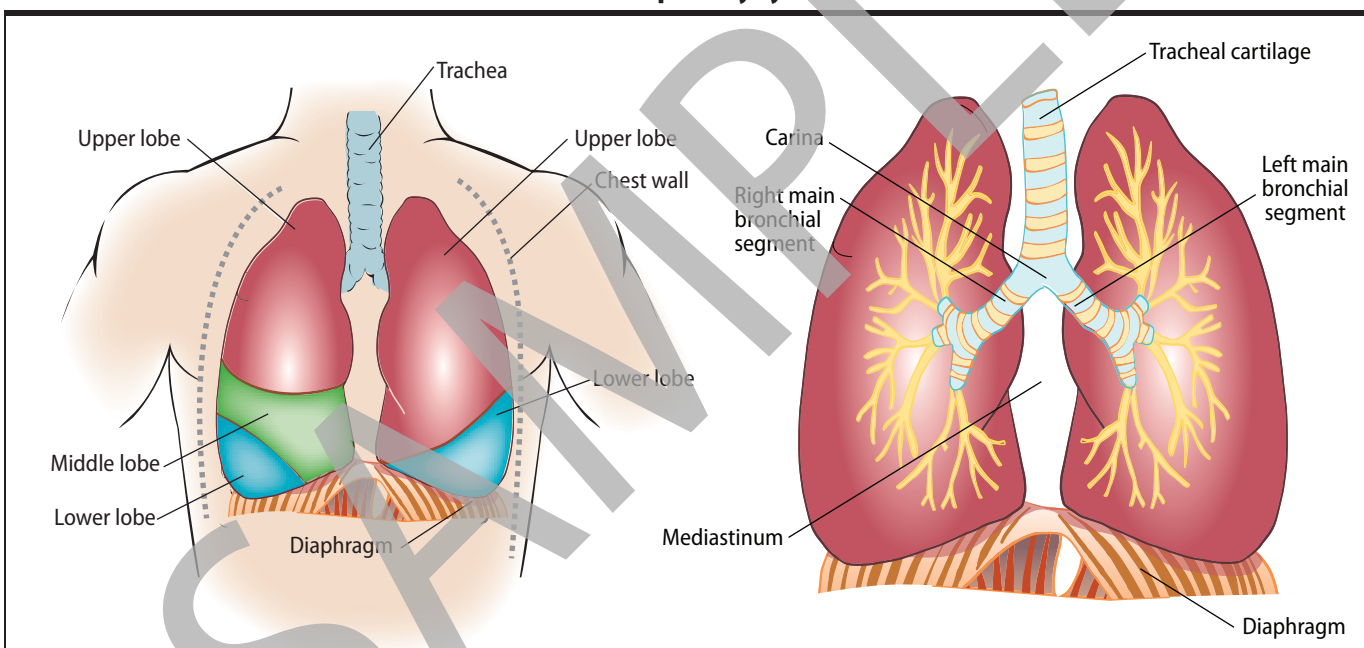
✓6<sup>th</sup> **L97.1 Non-pressure chronic ulcer of thigh**✓6<sup>th</sup> **L97.10 Non-pressure chronic ulcer of unspecified thigh****L97.101 Non-pressure chronic ulcer of unspecified thigh limited to breakdown of skin** CC UNS HCC**L97.102 Non-pressure chronic ulcer of unspecified thigh with fat layer exposed** CC UNS HCC SW**L97.103 Non-pressure chronic ulcer of unspecified thigh with necrosis of muscle** CC UNS HCC SW**L97.104 Non-pressure chronic ulcer of unspecified thigh with necrosis of bone** CC UNS HCC SW**L97.105 Non-pressure chronic ulcer of unspecified thigh with muscle involvement without evidence of necrosis** CC UNS HCC**L97.106 Non-pressure chronic ulcer of unspecified thigh with bone involvement without evidence of necrosis** CC UNS HCC**L97.108 Non-pressure chronic ulcer of unspecified thigh with other specified severity** CC UNS HCC**L97.109 Non-pressure chronic ulcer of unspecified thigh with unspecified severity** CC UNS HCC✓6<sup>th</sup> **L97.11 Non-pressure chronic ulcer of right thigh****L97.111 Non-pressure chronic ulcer of right thigh limited to breakdown of skin** CC HCC**L97.112 Non-pressure chronic ulcer of right thigh with fat layer exposed** CC HCC SW

<b>Z04.89</b>	Encounter for examination and observation for other specified reasons	
<b>Z04.9</b>	Encounter for examination and observation for unspecified reason	UPD
	Encounter for observation NOS	
<b>✓4# Z05</b>	Encounter for observation and evaluation of newborn for suspected diseases and conditions ruled out	
	This category is to be used for newborns, within the neonatal period (the first 28 days of life), who are suspected of having an abnormal condition, but without signs or symptoms, and which, after examination and observation, is ruled out.	
	AHA: 2017,4Q,27; 2016,4Q,77	
<b>Z05.0</b>	Observation and evaluation of newborn for suspected cardiac condition ruled out	N
<b>Z05.1</b>	Observation and evaluation of newborn for suspected infectious condition ruled out	N
	AHA: 2019,2Q,10	
<b>Z05.2</b>	Observation and evaluation of newborn for suspected neurological condition ruled out	N
<b>Z05.3</b>	Observation and evaluation of newborn for suspected respiratory condition ruled out	N
<b>✓5# Z05.4</b>	Observation and evaluation of newborn for suspected genetic, metabolic or immunologic condition ruled out	
<b>Z05.41</b>	Observation and evaluation of newborn for suspected genetic condition ruled out	N
	AHA: 2016,4Q,55	
<b>Z05.42</b>	Observation and evaluation of newborn for suspected metabolic condition ruled out	N
<b>Z05.43</b>	Observation and evaluation of newborn for suspected immunologic condition ruled out	N
<b>Z05.5</b>	Observation and evaluation of newborn for suspected gastrointestinal condition ruled out	N
<b>Z05.6</b>	Observation and evaluation of newborn for suspected genitourinary condition ruled out	N
<b>✓5# Z05.7</b>	Observation and evaluation of newborn for suspected skin, subcutaneous, musculoskeletal and connective tissue condition ruled out	
<b>Z05.71</b>	Observation and evaluation of newborn for suspected skin and subcutaneous tissue condition ruled out	N
<b>Z05.72</b>	Observation and evaluation of newborn for suspected musculoskeletal condition ruled out	N
<b>Z05.73</b>	Observation and evaluation of newborn for suspected connective tissue condition ruled out	N
<b>Z05.8</b>	Observation and evaluation of newborn for other specified suspected condition ruled out	N
<b>Z05.9</b>	Observation and evaluation of newborn for unspecified suspected condition ruled out	N
<b>Z08</b>	Encounter for follow-up examination after completed treatment for malignant neoplasm	UPD
	Medical surveillance following completed treatment	
	Use additional code to identify any acquired absence of organs (Z90.-)	
	Use additional code to identify the personal history of malignant neoplasm (Z85.-)	
	EXCLUDES 1 aftercare following medical care (Z43-Z49, Z51)	
	AHA: 2020,3Q,30	
<b>Z09</b>	Encounter for follow-up examination after completed treatment for conditions other than malignant neoplasm	UPD
	Medical surveillance following completed treatment	
	Use additional code to identify any applicable history of disease code (Z86.-, Z87.-)	
	EXCLUDES 1 aftercare following medical care (Z43-Z49, Z51)	
	surveillance of contraception (Z30.4-)	
	surveillance of prosthetic and other medical devices (Z44-Z46)	
	AHA: 2021,1Q,33; 2020,2Q,10; 2017,1Q,9; 2015,1Q,8	
<b>✓4# Z11</b>	Encounter for screening for infectious and parasitic diseases	
	Screening is the testing for disease or disease precursors in asymptomatic individuals so that early detection and treatment can be provided for those who test positive for the disease.	
	EXCLUDES 1 encounter for diagnostic examination - code to sign or symptom	
<b>Z11.0</b>	Encounter for screening for intestinal infectious diseases	UPD
<b>Z11.1</b>	Encounter for screening for respiratory tuberculosis	UPD
	Encounter for screening for active tuberculosis disease	
<b>Z11.2</b>	Encounter for screening for other bacterial diseases	UPD
<b>Z11.3</b>	Encounter for screening for infections with a predominantly sexual mode of transmission	UPD
	EXCLUDES 2 encounter for screening for human immunodeficiency virus [HIV] (Z11.4)	
	encounter for screening for human papillomavirus (Z11.51)	
<b>Z11.4</b>	Encounter for screening for human immunodeficiency virus [HIV]	UPD
<b>✓5# Z11.5</b>	Encounter for screening for other viral diseases	
	EXCLUDES 2 encounter for screening for viral intestinal disease (Z11.0)	
<b>Z11.51</b>	Encounter for screening for human papillomavirus (HPV)	UPD
<b>Z11.52</b>	Encounter for screening for COVID-19	UPD
	AHA: 2021,1Q,27,37,41	
	TIP: This code is not appropriate for use during the pandemic phase of COVID-19. Use Z20.822 Contact with or (suspected) exposure to COVID-19, instead.	
<b>Z11.59</b>	Encounter for screening for other viral diseases	UPD
	AHA: 2020,3Q,14	
<b>Z11.6</b>	Encounter for screening for other protozoal diseases and helminthiasis	UPD
	EXCLUDES 2 encounter for screening for protozoal intestinal disease (Z11.0)	
<b>Z11.7</b>	Encounter for testing for latent tuberculosis infection	UPD
	AHA: 2019,4Q,20	
<b>Z11.8</b>	Encounter for screening for other infectious and parasitic diseases	UPD
	Encounter for screening for chlamydia	
	Encounter for screening for rickettsial	
	Encounter for screening for spirochetal	
	Encounter for screening for mycoses	
<b>Z11.9</b>	Encounter for screening for infectious and parasitic diseases, unspecified	UPD
<b>✓4# Z12</b>	Encounter for screening for malignant neoplasms	
	Screening is the testing for disease or disease precursors in asymptomatic individuals so that early detection and treatment can be provided for those who test positive for the disease.	
	Use additional code to identify any family history of malignant neoplasm (Z80.-)	
	EXCLUDES 1 encounter for diagnostic examination - code to sign or symptom	
<b>Z12.0</b>	Encounter for screening for malignant neoplasm of stomach	UPD
<b>✓5# Z12.1</b>	Encounter for screening for malignant neoplasm of intestinal tract	
	AHA: 2017,1Q,8,9	
<b>Z12.10</b>	Encounter for screening for malignant neoplasm of intestinal tract, unspecified	UPD
<b>Z12.11</b>	Encounter for screening for malignant neoplasm of colon	UPD
	Encounter for screening colonoscopy NOS	
	AHA: 2019,1Q,32-33; 2018,1Q,6	
<b>Z12.12</b>	Encounter for screening for malignant neoplasm of rectum	UPD
	AHA: 2018,1Q,6	
<b>Z12.13</b>	Encounter for screening for malignant neoplasm of small intestine	UPD
<b>Z12.2</b>	Encounter for screening for malignant neoplasm of respiratory organs	UPD
<b>✓5# Z12.3</b>	Encounter for screening for malignant neoplasm of breast	
<b>Z12.31</b>	Encounter for screening mammogram for malignant neoplasm of breast	UPD
	EXCLUDES 1 inconclusive mammogram (R92.2)	
	AHA: 2015,1Q,24	
<b>Z12.39</b>	Encounter for other screening for malignant neoplasm of breast	UPD
<b>Z12.4</b>	Encounter for screening for malignant neoplasm of cervix	UPD ♀
	Encounter for screening pap smear for malignant neoplasm of cervix	
	EXCLUDES 1 when screening is part of general gynecological examination (Z01.4-)	
	EXCLUDES 2 encounter for screening for human papillomavirus (Z11.51)	
<b>Z12.5</b>	Encounter for screening for malignant neoplasm of prostate	♂

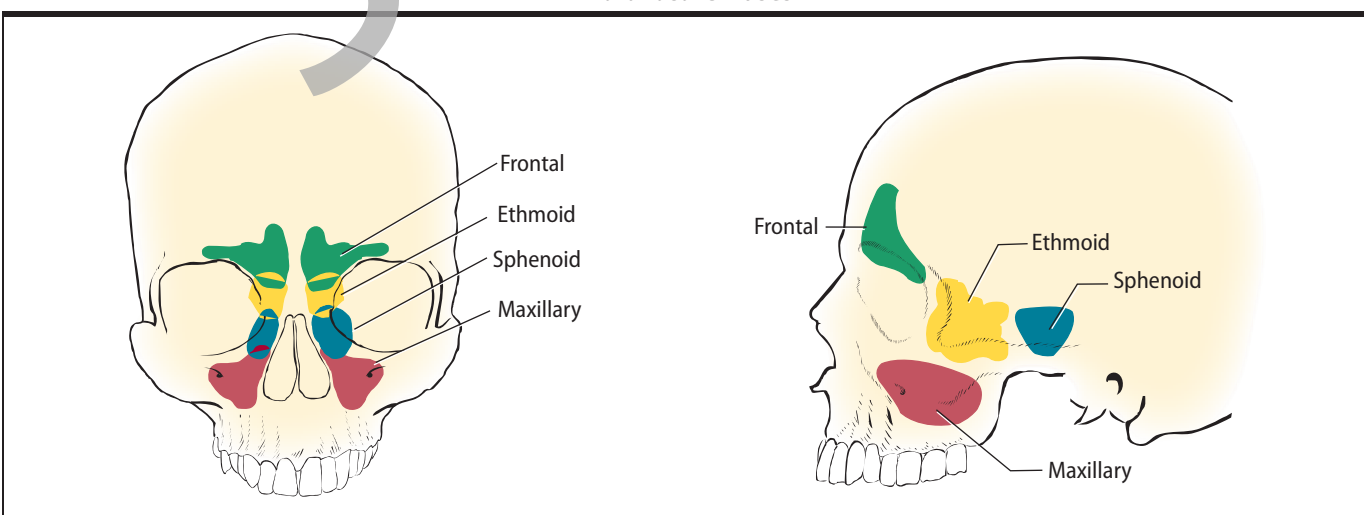
### Upper Respiratory System



### Lower Respiratory System



### Paranasal Sinuses





# Appendixes

## Appendix A: Valid 3-character ICD-10-CM Codes

A09	Infectious gastroenteritis and colitis, unspecified	E59	Dietary selenium deficiency
A33	Tetanus neonatorum	E60	Dietary zinc deficiency
A34	Obstetrical tetanus	E65	Localized adiposity
A35	Other tetanus	E68	Sequelae of hyperalimentation
A46	Erysipelas	F04	Amnesic disorder due to known physiological condition
A55	Chlamydial lymphogranuloma (venereum)	F05	Delirium due to known physiological condition
A57	Chancroid	F09	Unspecified mental disorder due to known physiological condition
A58	Granuloma inguinale	F21	Schizotypal disorder
A64	Unspecified sexually transmitted disease	F22	Delusional disorders
A65	Nonvenereal syphilis	F23	Brief psychotic disorder
A70	Chlamydia psittaci infections	F24	Shared psychotic disorder
A78	Q fever	F28	Other psychotic disorder not due to a substance or known physiological condition
A86	Unspecified viral encephalitis	F29	Unspecified psychosis not due to a substance or known physiological condition
A89	Unspecified viral infection of central nervous system	F39	Unspecified mood [affective] disorder
A90	Dengue fever [classical dengue]	F54	Psychological and behavioral factors associated with disorders or diseases classified elsewhere
A91	Dengue hemorrhagic fever	F59	Unspecified behavioral syndromes associated with physiological disturbances and physical factors
A94	Unspecified arthropod-borne viral fever	F66	Other sexual disorders
A99	Unspecified viral hemorrhagic fever	F69	Unspecified disorder of adult personality and behavior
B03	Smallpox	F70	Mild intellectual disabilities
B04	Monkeypox	F71	Moderate intellectual disabilities
B09	Unspecified viral infection characterized by skin and mucous membrane lesions	F72	Severe intellectual disabilities
B20	Human immunodeficiency virus [HIV] disease	F73	Profound intellectual disabilities
B49	Unspecified mycosis	F79	Unspecified intellectual disabilities
B54	Unspecified malaria	F82	Specific developmental disorder of motor function
B59	Pneumocystosis	F88	Other disorders of psychological development
B64	Unspecified protozoal disease	F89	Unspecified disorder of psychological development
B72	Dracunculiasis	F99	Mental disorder, not otherwise specified
B75	Trichinellosis	G01	Meningitis in bacterial diseases classified elsewhere
B79	Trichuriasis	G02	Meningitis in other infectious and parasitic diseases classified elsewhere
B80	Enterobiasis	G07	Intracranial and intraspinal abscess and granuloma in diseases classified elsewhere
B86	Scabies	G08	Intracranial and intraspinal phlebitis and thrombophlebitis
B89	Unspecified parasitic disease	G09	Sequelae of inflammatory diseases of central nervous system
B91	Sequelae of poliomyelitis	G10	Huntington's disease
B92	Sequelae of leprosy	G14	Postpolio syndrome
C01	Malignant neoplasm of base of tongue	G20	Parkinson's disease
C07	Malignant neoplasm of parotid gland	G26	Extrapyramidal and movement disorders in diseases classified elsewhere
C12	Malignant neoplasm of pyriform sinus	G35	Multiple sclerosis
C19	Malignant neoplasm of rectosigmoid junction	G53	Cranial nerve disorders in diseases classified elsewhere
C20	Malignant neoplasm of rectum	G55	Nerve root and plexus compressions in diseases classified elsewhere
C23	Malignant neoplasm of gallbladder	G59	Mononeuropathy in diseases classified elsewhere
C33	Malignant neoplasm of trachea	G63	Polyneuropathy in diseases classified elsewhere
C37	Malignant neoplasm of thymus	G64	Other disorders of peripheral nervous system
C52	Malignant neoplasm of vagina	G94	Other disorders of brain in diseases classified elsewhere
C55	Malignant neoplasm of uterus, part unspecified	H22	Disorders of iris and ciliary body in diseases classified elsewhere
C58	Malignant neoplasm of placenta	H28	Cataract in diseases classified elsewhere
C61	Malignant neoplasm of prostate	H32	Chorioretinal disorders in diseases classified elsewhere
C73	Malignant neoplasm of thyroid gland	H36	Retinal disorders in diseases classified elsewhere
D34	Benign neoplasm of thyroid gland	H42	Glaucoma in diseases classified elsewhere
D45	Polycythemia vera	I00	Rheumatic fever without heart involvement
D62	Acute posthemorrhagic anemia	I10	Essential (primary) hypertension
D65	Disseminated intravascular coagulation [defibrination syndrome]	I32	Pericarditis in diseases classified elsewhere
D66	Hereditary factor VIII deficiency	I38	Endocarditis, valve unspecified
D67	Hereditary factor IX deficiency	I39	Endocarditis and heart valve disorders in diseases classified elsewhere
D71	Functional disorders of polymorphonuclear neutrophils	I41	Myocarditis in diseases classified elsewhere
D77	Other disorders of blood and blood-forming organs in diseases classified elsewhere	I43	Cardiomyopathy in diseases classified elsewhere
E02	Subclinical iodine-deficiency hypothyroidism	I52	Other heart disorders in diseases classified elsewhere
E15	Nondiabetic hypoglycemic coma	I5A	Non-ischemic myocardial injury (non-traumatic)
E35	Disorders of endocrine glands in diseases classified elsewhere	I76	Septic arterial embolism
E40	Kwashiorkor	I81	Portal vein thrombosis
E41	Nutritional marasmus	I96	Gangrene, not elsewhere classified
E42	Marasmic kwashiorkor	J00	Acute nasopharyngitis (common cold)
E43	Unspecified severe protein-calorie malnutrition	J13	Pneumonia due to Streptococcus pneumoniae
E45	Retarded development following protein-calorie malnutrition	J14	Pneumonia due to Hemophilus influenzae
E46	Unspecified protein-calorie malnutrition		
E52	Niacin deficiency [pellagra]		
E54	Ascorbic acid deficiency		
E58	Dietary calcium deficiency		

<b>HAC 05: Falls and Trauma (continued)</b>	S62.256B	S62.393B	S62.655B	S72.042C	S72.121B	S72.309A
S62.113B	S62.291B	S62.394B	S62.656B	S72.043A	S72.121C	S72.309B
S62.114B	S62.292B	S62.395B	S62.657B	S72.043B	S72.122A	S72.309C
S62.115B	S62.299B	S62.396B	S62.658B	S72.043C	S72.122B	S72.321A
S62.116B	S62.300B	S62.397B	S62.659B	S72.044A	S72.122C	S72.321B
S62.121B	S62.301B	S62.398B	S62.660B	S72.044B	S72.123A	S72.321C
S62.122B	S62.302B	S62.399B	S62.661B	S72.044C	S72.123B	S72.322A
S62.123B	S62.303B	S62.501B	S62.662B	S72.045A	S72.123C	S72.322B
S62.124B	S62.304B	S62.502B	S62.663B	S72.045B	S72.124A	S72.322C
S62.125B	S62.305B	S62.509B	S62.664B	S72.045C	S72.124B	S72.323A
S62.126B	S62.306B	S62.511B	S62.665B	S72.046A	S72.124C	S72.323B
S62.131B	S62.307B	S62.512B	S62.666B	S72.046B	S72.125A	S72.323C
S62.132B	S62.308B	S62.513B	S62.667B	S72.046C	S72.125B	S72.324A
S62.133B	S62.309B	S62.514B	S62.668B	S72.051A	S72.125C	S72.324B
S62.134B	S62.310B	S62.515B	S62.669B	S72.051B	S72.126A	S72.324C
S62.135B	S62.311B	S62.516B	S62.90XB	S72.051C	S72.126B	S72.325A
S62.136B	S62.312B	S62.521B	S62.91XB	S72.052A	S72.126C	S72.325B
S62.141B	S62.313B	S62.522B	S62.92XB	S72.052B	S72.131A	S72.325C
S62.142B	S62.314B	S62.523B	S72.001A	S72.052C	S72.131B	S72.326A
S62.143B	S62.315B	S62.524B	S72.001B	S72.059A	S72.131C	S72.326B
S62.144B	S62.316B	S62.525B	S72.001C	S72.059B	S72.132A	S72.326C
S62.145B	S62.317B	S62.526B	S72.002A	S72.059C	S72.132B	S72.331A
S62.146B	S62.318B	S62.600B	S72.002B	S72.061A	S72.132C	S72.331B
S62.151B	S62.319B	S62.601B	S72.002C	S72.061B	S72.133A	S72.331C
S62.152B	S62.320B	S62.602B	S72.009A	S72.061C	S72.133B	S72.332A
S62.153B	S62.321B	S62.603B	S72.009B	S72.062A	S72.133C	S72.332B
S62.154B	S62.322B	S62.604B	S72.009C	S72.062B	S72.134A	S72.332C
S62.155B	S62.323B	S62.605B	S72.011A	S72.062C	S72.134B	S72.333A
S62.156B	S62.324B	S62.606B	S72.011B	S72.063A	S72.134C	S72.333B
S62.161B	S62.325B	S62.607B	S72.011C	S72.063B	S72.135A	S72.333C
S62.162B	S62.326B	S62.608B	S72.012A	S72.063C	S72.135B	S72.334A
S62.163B	S62.327B	S62.609B	S72.012B	S72.064A	S72.135C	S72.334B
S62.164B	S62.328B	S62.610B	S72.012C	S72.064B	S72.136A	S72.334C
S62.165B	S62.329B	S62.611B	S72.019A	S72.064C	S72.136B	S72.335A
S62.166B	S62.330B	S62.612B	S72.019B	S72.065A	S72.136C	S72.335B
S62.171B	S62.331B	S62.613B	S72.019C	S72.065B	S72.141A	S72.335C
S62.172B	S62.332B	S62.614B	S72.021A	S72.065C	S72.141B	S72.336A
S62.173B	S62.333B	S62.615B	S72.021B	S72.066A	S72.141C	S72.336B
S62.174B	S62.334B	S62.616B	S72.021C	S72.066B	S72.142A	S72.336C
S62.175B	S62.335B	S62.617B	S72.022A	S72.066C	S72.142B	S72.341A
S62.176B	S62.336B	S62.618B	S72.022B	S72.091A	S72.142C	S72.341B
S62.181B	S62.337B	S62.619B	S72.022C	S72.091B	S72.143A	S72.341C
S62.182B	S62.338B	S62.620B	S72.023A	S72.091C	S72.143B	S72.342A
S62.183B	S62.339B	S62.621B	S72.023B	S72.092A	S72.143C	S72.342B
S62.184B	S62.340B	S62.622B	S72.023C	S72.092B	S72.144A	S72.342C
S62.185B	S62.341B	S62.623B	S72.024A	S72.092C	S72.144B	S72.343A
S62.186B	S62.342B	S62.624B	S72.024B	S72.099A	S72.144C	S72.343B
S62.201B	S62.343B	S62.625B	S72.024C	S72.099B	S72.145A	S72.343C
S62.202B	S62.344B	S62.626B	S72.025A	S72.099C	S72.145B	S72.344A
S62.209B	S62.345B	S62.627B	S72.025B	S72.101A	S72.145C	S72.344B
S62.211B	S62.346B	S62.628B	S72.025C	S72.101B	S72.146A	S72.344C
S62.212B	S62.347B	S62.629B	S72.026A	S72.101C	S72.146B	S72.345A
S62.213B	S62.348B	S62.630B	S72.026B	S72.102A	S72.146C	S72.345B
S62.221B	S62.349B	S62.631B	S72.026C	S72.102B	S72.21XA	S72.345C
S62.222B	S62.350B	S62.632B	S72.031A	S72.102C	S72.21XB	S72.346A
S62.223B	S62.351B	S62.633B	S72.031B	S72.109A	S72.21XC	S72.346B
S62.224B	S62.352B	S62.634B	S72.031C	S72.109B	S72.22XA	S72.346C
S62.225B	S62.353B	S62.635B	S72.032A	S72.109C	S72.22XB	S72.351A
S62.226B	S62.354B	S62.636B	S72.032B	S72.111A	S72.22XC	S72.351B
S62.231B	S62.355B	S62.637B	S72.032C	S72.111B	S72.23XA	S72.351C
S62.232B	S62.356B	S62.638B	S72.033A	S72.111C	S72.23XB	S72.352A
S62.233B	S62.357B	S62.639B	S72.033B	S72.112A	S72.23XC	S72.352B
S62.234B	S62.358B	S62.640B	S72.033C	S72.112B	S72.24XA	S72.352C
S62.235B	S62.359B	S62.641B	S72.034A	S72.112C	S72.24XB	S72.353A
S62.236B	S62.360B	S62.642B	S72.034B	S72.113A	S72.24XC	S72.353B
S62.241B	S62.361B	S62.643B	S72.034C	S72.113B	S72.25XA	S72.353C
S62.242B	S62.362B	S62.644B	S72.035A	S72.113C	S72.25XB	S72.354A
S62.243B	S62.363B	S62.645B	S72.035B	S72.114A	S72.25XC	S72.354B
S62.244B	S62.364B	S62.646B	S72.035C	S72.114B	S72.26XA	S72.354C
S62.245B	S62.365B	S62.647B	S72.036A	S72.114C	S72.26XB	S72.355A
S62.246B	S62.366B	S62.648B	S72.036B	S72.115A	S72.26XC	S72.355B
S62.251B	S62.367B	S62.649B	S72.036C	S72.115B	S72.301A	S72.355C
S62.252B	S62.368B	S62.650B	S72.041A	S72.115C	S72.301B	S72.356A
S62.253B	S62.369B	S62.651B	S72.041B	S72.116A	S72.301C	S72.356B
S62.254B	S62.390B	S62.652B	S72.041C	S72.116B	S72.302A	S72.356C
S62.255B	S62.391B	S62.653B	S72.042A	S72.116C	S72.302B	S72.361A
	S62.392B	S62.654B	S72.042B	S72.121A	S72.302C	S72.361B