

# ICD-10-CM Expert for Skilled Nursing and Inpatient Rehabilitation Facilities

**The complete official guidelines and code set**

Codes valid from October 1, 2026  
through September 30, 2027

2027



[optumcoding.com](https://optumcoding.com)

# Contents

## How to Use ICD-10-CM Expert for Skilled Nursing Facilities and Inpatient Rehabilitation Facilities 2027 ..... iii

Introduction .....	iii
What's New for 2027 .....	iii
Conversion Table .....	iii
10 Steps to Correct Coding .....	iii
Official ICD-10-CM Guidelines for Coding and Reporting .....	iii
Indexes .....	iii
Index to Diseases and Injuries .....	iii
Neoplasm Table.....	iii
Table of Drugs and Chemicals .....	iv
External Causes Index .....	iv
Index Notations .....	iv
Tabular List of Diseases .....	v
Code and Code Descriptions.....	v
Tabular Notations .....	v
Official Notations .....	v
Optum Notations .....	vi
Icons .....	vi
Color Bars .....	vii
Chapter-Level Notations .....	viii
Appendixes .....	viii
Illustrations.....	viii

<b>What's New for 2027 .....</b>	<b>ix</b>
Official Updates .....	ix
Proprietary Updates .....	ix

<b>Conversion Table of ICD-10-CM Codes .....</b>	<b>x</b>
--	----------

<b>10 Steps to Correct Coding.....</b>	<b>xii</b>
--	------------

<b>ICD-10-CM Official Guidelines for Coding and Reporting .....</b>	<b>Coding Guidelines-1</b>
---	----------------------------

<b>ICD-10-CM Index to Diseases and Injuries .....</b>	<b>1</b>
---	----------

<b>ICD-10-CM Neoplasm Table .....</b>	<b>339</b>
---------------------------------------	------------

<b>ICD-10-CM Table of Drugs and Chemicals .....</b>	<b>358</b>
---	------------

<b>ICD-10-CM Index to External Causes.....</b>	<b>408</b>
--	------------

<b>ICD-10-CM Tabular List of Diseases and Injuries .....</b>	<b>445</b>
--	------------

Chapter 1. Certain Infectious and Parasitic Diseases (A00-B99), U07.1, U09.9 .....	445
Chapter 2. Neoplasms (C00-D49) .....	471
Chapter 3. Diseases of the Blood and Blood-forming Organs and Certain Disorders Involving the Immune Mechanism (D50-D89) .....	513
Chapter 4. Endocrine, Nutritional, and Metabolic Diseases (E00-E89) .....	527
Chapter 5. Mental, Behavioral and Neurodevelopmental Disorders (F01-F99) .....	551
Chapter 6. Diseases of the Nervous System (G00-G99) .....	583
Chapter 7. Diseases of the Eye and Adnexa (H00-H59) .....	607
Chapter 8. Diseases of the Ear and Mastoid Process (H60-H95) .....	647
Chapter 9. Diseases of the Circulatory System (I00-I99) .....	661
Chapter 10. Diseases of the Respiratory System (J00-J99), U07.0 .....	709

Chapter 11. Diseases of the Digestive System (K00-K95) .....	727
Chapter 12. Diseases of the Skin and Subcutaneous Tissue (L00-L99) .....	755
Chapter 13. Diseases of the Musculoskeletal System and Connective Tissue (M00-M99) .....	779
Chapter 14. Diseases of Genitourinary System (N00-N99) .....	871
Chapter 15. Pregnancy, Childbirth, and the Puerperium (O00-O9A) .....	893
Chapter 16. Certain Conditions Originating in the Perinatal Period (P00-P96) .....	933
Chapter 17. Congenital Malformations, Deformations, and Chromosomal Abnormalities (Q00-Q99) .....	947
Chapter 18. Symptoms, Signs, and Abnormal Clinical and Laboratory Findings, Not Elsewhere Classified (R00-R99) .....	969
Chapter 19. Injury, Poisoning, and Certain Other Consequences of External Causes (S00-T88) .....	991
Chapter 20. External Causes of Morbidity (V00-Y99) .....	1199
Chapter 21. Factors Influencing Health Status and Contact with Health Services (Z00-Z99) .....	1267
Chapter 22. Codes for Special Purposes (U00-U85).....	1307

## Appendixes .....Appendixes-1

Appendix A: Valid 3-character ICD-10-CM Codes.....	Appendixes-1
Appendix B: Pharmacology List 2027.....	Appendixes-3
Appendix C: Z Codes for Long-Term Drug Use with Associated Drugs .....	Appendixes-18
Appendix D: Skilled Nursing Facility Patient-Driven Payment Model .....	Appendixes-20
Appendix E: PDPM Comorbid Conditions.....	Appendixes-23
Appendix F: PDPM Return-to-Provider Code List .....	Appendixes-26
Appendix G: Skilled Nursing Facility Active Diagnosis List.....	Appendixes-32
Appendix H: IRF Impairment Group Codes .....	Appendixes-34
Appendix I: IRF Comorbid Conditions.....	Appendixes-39
Appendix J: Coding Issues for Long-Term Care (LTC).....	Appendixes-45

## Illustrations ..... Illustrations-1

Chapter 3. Diseases of the Blood and Blood-forming Organs and Certain Disorders Involving the Immune Mechanism (D50-D89) .....	Illustrations-1
Red Blood Cells .....	Illustrations-1
White Blood Cell .....	Illustrations-1
Platelet .....	Illustrations-2
Coagulation .....	Illustrations-2
Spleen Anatomical Location and External Structures .....	Illustrations-3
Spleen Interior Structures .....	Illustrations-3
Chapter 4. Endocrine, Nutritional, and Metabolic Diseases (E00-E89) .....	Illustrations-4
Endocrine System .....	Illustrations-4
Thyroid .....	Illustrations-5
Thyroid and Parathyroid Glands .....	Illustrations-5
Pancreas .....	Illustrations-6
Anatomy of the Adrenal Gland .....	Illustrations-6
Structure of an Ovary .....	Illustrations-7
Testis and Associated Structures .....	Illustrations-7
Thymus .....	Illustrations-8

Chapter 6. Diseases of the Nervous System (G00–G99) .....	Illustrations–9	Chapter 11. Diseases of the Digestive System (K00–K95) .....	Illustrations–29
Brain .....	Illustrations–9	Digestive System .....	Illustrations–29
Cranial Nerves .....	Illustrations–9	Omentum and Mesentery .....	Illustrations–30
Peripheral Nervous System .....	Illustrations–10	Peritoneum and Retroperitoneum .....	Illustrations–30
Spinal Cord and Spinal Nerves .....	Illustrations–11		
Nerve Cell .....	Illustrations–12	Chapter 12. Diseases of the Skin and Subcutaneous Tissue (L00–L99) .....	Illustrations–31
Trigeminal and Facial Nerve Branches .....	Illustrations–12	Nail Anatomy .....	Illustrations–31
		Skin and Subcutaneous Tissue .....	Illustrations–31
Chapter 7. Diseases of the Eye and Adnexa (H00–H59) .....	Illustrations–13	Chapter 13. Diseases of the Musculoskeletal System and Connective Tissue (M00–M99) .....	Illustrations–32
Eye .....	Illustrations–13	Bones and Joints .....	Illustrations–32
Posterior Pole of Globe/Flow of Aqueous Humor .....	Illustrations–13	Shoulder Anterior View .....	Illustrations–33
Lacrimal System .....	Illustrations–14	Shoulder Posterior View .....	Illustrations–33
Eye Musculature .....	Illustrations–14	Elbow Anterior View .....	Illustrations–33
Eyelid Structures .....	Illustrations–14	Elbow Posterior View .....	Illustrations–33
Chapter 8. Diseases of the Ear and Mastoid Process (H60–H95) .....	Illustrations–15	Hand .....	Illustrations–33
Ear Anatomy .....	Illustrations–15	Hip Anterior View .....	Illustrations–34
Chapter 9. Diseases of the Circulatory System (I00–I99) .....	Illustrations–16	Hip Posterior View .....	Illustrations–34
Anatomy of the Heart .....	Illustrations–16	Knee Anterior View .....	Illustrations–34
Heart Cross Section .....	Illustrations–16	Knee Posterior View .....	Illustrations–34
Heart Valves .....	Illustrations–17	Foot .....	Illustrations–34
Heart Conduction System .....	Illustrations–17	Muscles .....	Illustrations–35
Coronary Arteries .....	Illustrations–18	Chapter 14. Diseases of Genitourinary System (N00–N99) .....	Illustrations–36
Arteries .....	Illustrations–19	Urinary System .....	Illustrations–36
Veins .....	Illustrations–20	Male Genitourinary System .....	Illustrations–37
Internal Carotid and Vertebral Arteries and Branches .....	Illustrations–21	Female Internal Genitalia .....	Illustrations–37
External Carotid Artery and Branches .....	Illustrations–21	Female Genitourinary Tract Lateral View .....	Illustrations–37
Branches of Abdominal Aorta .....	Illustrations–22	Chapter 15. Pregnancy, Childbirth, and the Puerperium (O00–O9A) .....	Illustrations–38
Portal Venous Circulation .....	Illustrations–22	Term Pregnancy – Single Gestation .....	Illustrations–38
Lymphatic System .....	Illustrations–23	Twin Gestation–Dichorionic–Diamniotic (DI-DI) .....	Illustrations–38
Axillary Lymph Nodes .....	Illustrations–24	Twin Gestation–Monochorionic–Diamniotic (MO-DI) .....	Illustrations–39
Lymphatic System of Head and Neck .....	Illustrations–24	Twin Gestation–Monochorionic–Monoamniotic (MO-MO) .....	Illustrations–39
Lymphatic Capillaries .....	Illustrations–25	Chapter 19. Injury, Poisoning, and Certain Other Consequences of External Causes (S00–T88) .....	Illustrations–40
Lymphatic Drainage .....	Illustrations–25	Types of Fractures .....	Illustrations–40
Chapter 10. Diseases of the Respiratory System (J00–J99), U07.0 .....	Illustrations–26	Salter-Harris Fracture Types .....	Illustrations–40
Respiratory System .....	Illustrations–26		
Upper Respiratory System .....	Illustrations–27		
Lower Respiratory System .....	Illustrations–27		
Paranasal Sinuses .....	Illustrations–27		
Lung Segments .....	Illustrations–28		
Alveoli .....	Illustrations–28		

## Age Edits

**N** Newborn Age: 0

These diagnoses are intended for newborns and neonates and the patient's age must be 0 years.

**N47.0** Adherent prepuce, newborn

RP N

**P** Pediatric Age: 0-17

These diagnoses are intended for children and the patient's age must be between 0 and 17 years.

**L21.1** Seborrheic infantile dermatitis

RP P

**M** Maternity Age: 9-64

These diagnoses are intended for childbearing patients between the age of 9 and 64 years.

**O02.9** Abnormal product of conception, unspecified

RP M

**A** Adult Age: 15-124

These diagnoses are intended for patients between the age of 15 and 124 years.

**R54** Age-related physical debility

RP A

Frailty  
Old age  
Senescence  
Senile asthenia  
Senile debility

**EXCLUDES 1** age-related cognitive decline (R41.81)  
sarcopenia (M62.84)  
senile psychosis (F03.-)  
senility NOS (R41.81)

## Sex Edits

Effective April 1, 2024, the Integrated Outpatient Code Editor (IOCE), a program used to process claims for outpatient providers, has deactivated the sex conflict edit. There will no longer be a female or male edit restriction for ICD-10-CM codes.

**NA** Non-therapy Ancillary

This icon identifies diagnoses that are considered comorbid conditions for the non-therapy ancillary (NTA) payment component of the Patient Driven Payment Model (PDP). For a comprehensive list of all NTA comorbidity diagnosis codes, please refer to appendix E, at the back of this book.

**A31.0** Pulmonary mycobacterial infection

NA

Infection due to *Mycobacterium avium*  
Infection due to *Mycobacterium intracellulare* [Battey bacillus]  
Infection due to *Mycobacterium kansasii*

**SL** Speech-language Pathology

This icon identifies diagnoses that are considered comorbid conditions for the speech-language pathology (SLP) payment component of the Patient Driven Payment Model (PDP). For a comprehensive list of all SLP comorbidity diagnosis codes, please refer to appendix E, at the back of this book.

**C02.1** Malignant neoplasm of border of tongue

SL

Malignant neoplasm of tip of tongue

RP

## Return to Provider

This icon identifies a diagnosis code that is unspecified, ambiguous, or is specified in the ICD-10-CM official coding guidelines and conventions to be inappropriate for reporting as the principal diagnosis. If one of these codes is reported as the principal diagnosis on the minimum data set (MDS), the MDS should be returned to the provider to select an appropriate ICD-10-CM code. For a comprehensive list of all return-to-provider codes, refer to appendix F, at the back of this book.

**B90.0** Sequelae of central nervous system tuberculosis

RP

ED

## IRF Etiologic Diagnosis

This icon identifies diagnoses that represent an etiologic diagnosis. The etiologic diagnosis, entered into Item 22 of the IRF-PAI, is the problem that led to the condition represented by the impairment group code (IGC), entered into Item 21 of the IRF-PAI. For a comprehensive list of impairment groups to which these etiologic diagnoses may be grouped, please refer to appendix H, at the back of this book.

**G37.1** Central demyelination of corpus callosum

ED

CC

## IRF Comorbid Condition

This icon identifies diagnoses that are considered comorbid conditions for an inpatient rehabilitation admission. When reported as secondary diagnoses, these conditions are recognized as having a significant impact on the cost of furnishing inpatient rehabilitation services, therefore qualifying a case for payment adjustment. Comorbid conditions are entered into Item 24 of the IRF-PAI. For a comprehensive list of all comorbid conditions, please refer to appendix I, at the back of this book.

**A32.89** Other forms of listeriosis

CC

Listerial cerebral arteritis

## Color Bars

## Manifestation Code

Codes defined as manifestation codes appear in italic type, with a blue color bar over the code description. A manifestation cannot be reported as a first-listed code; it is sequenced as a secondary diagnosis with the underlying disease code listed first.

**G32.89** Other specified degenerative disorders of nervous system in diseases classified elsewhere

RP

Degenerative encephalopathy in diseases classified elsewhere

## Unspecified Diagnosis

Codes that appear with a gray color bar over the alphanumeric code identify unspecified diagnoses. These codes should be used in limited circumstances, when neither the diagnostic statement nor the documentation provides enough information to assign a more specific diagnosis code. The abbreviation NOS, "not otherwise specified," in the tabular list may be interpreted as "unspecified."

**G03.9** Meningitis, unspecified

CC

Arachnoiditis (spinal) NOS

**RIC Excl:** 03 Non-traumatic brain injury; 05 Non-traumatic spinal cord injury

# ICD-10-CM Index to Diseases and Injuries

## A

**Aarskog's syndrome** Q87.19

**Abandonment** — see Maltreatment

**Abasia** (-astasia) (hysterical) F44.4

**Abderhalden-Kaufmann-Lignac syndrome** (cystinosis) E72.04

**Abdomen, abdominal** — see also condition

acute R10.0

angina K55.1

muscle deficiency syndrome Q79.4

**Abdominalgia** — see Pain, abdominal

**Abduction contracture, hip or other joint** — see Contraction, joint

**Aberrant** (congenital) — see also Malposition, congenital

adrenal gland Q89.1

artery (peripheral) Q27.8

basilar NEC Q28.1

cerebral Q28.3

coronary Q24.5

digestive system Q27.8

eye Q15.8

lower limb Q27.8

precerebral Q28.1

pulmonary Q25.79

renal Q27.2

retina Q14.1

specified site NEC Q27.8

subclavian Q27.8

upper limb Q27.8

vertebral Q28.1

breast Q83.8

endocrine gland NEC Q89.2

hepatic duct Q44.5

pancreas Q45.3

parathyroid gland Q89.2

pituitary gland Q89.2

sebaceous glands, mucous membrane, mouth, congenital Q38.6

spleen Q89.09

subclavian artery Q27.8

thymus (gland) Q89.2

thyroid gland Q89.2

vein (peripheral) NEC Q27.8

cerebral Q28.3

digestive system Q27.8

lower limb Q27.8

precerebral Q28.1

specified site NEC Q27.8

upper limb Q27.8

**Aberration**

distasteful — see Disturbance, visual

mental F99

**Abetalipoproteinemia** E78.6

**Abiotrophy** R68.89

**Ablatio, ablation**

retinae — see Detachment, retina

**Ablepharia, ablepharon** Q10.3

**Abnormal, abnormality, abnormalities** — see also

Anomaly

acid-base balance (mixed) E87.4

albumin R77.0

alphafetoprotein R77.2

alveolar ridge K08.9

anatomical relationship Q89.9

apertures, congenital, diaphragm Q79.1

atrial septal, specified NEC Q21.19

auditory perception H93.29- ✓

diplacusis — see Diplacusis

hyperacusis — see Hyperacusis

recruitment — see Recruitment, auditory

threshold shift — see Shift, auditory threshold

autosomes Q99.9

fragile site Q95.5

basal metabolic rate R94.8

biosynthesis, testicular androgen E29.1

bleeding time R79.1

blood amino-acid level R79.83

blood level (of)

cobalt R79.0

copper R79.0

iron R79.0

**Abnormal, abnormality, abnormalities** — continued

blood level — continued

lithium R78.89

magnesium R79.0

mineral NEC R79.0

zinc R79.0

blood pressure

elevated R03.0

low reading (nonspecific) R03.1

blood sugar R73.09

blood-gas level R79.81

bowel sounds R19.15

absent R19.11

hyperactive R19.12

brain scan R94.02

breathing R06.9

caloric test R94.138

cerebrospinal fluid R83.9

cytology R83.6

drug level R83.2

enzyme level R83.0

hormones R83.1

immunology R83.4

microbiology R83.5

nonmedicinal level R83.3

specified type NEC R83.8

chemistry, blood R79.9

C-reactive protein R79.82

drugs — see Findings, abnormal, in blood

gas level R79.81

minerals R79.0

pancytopenia D61.818

PTT R79.1

specified NEC R79.89

toxins — see Findings, abnormal, in blood

chest sounds (friction) (rales) R09.89

chromosome, chromosomal Q99.9

with more than three X chromosomes, female Q97.1

analysis result R89.8

bronchial washings R84.8

cerebrospinal fluid R83.8

cervix uteri NEC R87.89

nasal secretions R84.8

nipple discharge R89.8

peritoneal fluid R85.89

pleural fluid R84.8

prostatic secretions R86.8

saliva R85.89

seminal fluid R86.8

sputum R84.8

synovial fluid R89.8

throat scrapings R84.8

vagina R87.89

vulva R87.89

wound secretions R89.8

dicentric replacement Q93.2

ring replacement Q93.2

sex Q99.8

female phenotype Q97.9

specified NEC Q97.8

male phenotype Q98.9

specified NEC Q98.8

structural male Q98.6

specified NEC Q99.8

clinical findings NEC R68.89

coagulation D68.9

newborn, transient P61.6

profile R79.1

time R79.1

communication — see Fistula

conjunctiva, vascular H11.41- ✓

coronary artery Q24.5

cortisol-binding globulin E27.8

course, eustachian tube Q17.8

creatinine clearance R94.4

cytology

anus R85.619

atypical squamous cells cannot exclude high grade

squamous intraepithelial lesion (ASC-H)

R85.611

atypical squamous cells of undetermined signifi-

cance (ASC-US) R85.610

cytologic evidence of malignancy R85.614

**Abnormal, abnormality, abnormalities** — continued

cytology — continued

anus — continued

high grade squamous intraepithelial lesion (HGSIL)

R85.613

human papillomavirus (HPV) DNA test

high risk positive R85.81

low risk positive R85.82

inadequate smear R85.615

low grade squamous intraepithelial lesion (LGSIL)

R85.612

satisfactory anal smear but lacking transformation

zone R85.616

specified NEC R85.618

unsatisfactory smear R85.615

female genital organs — see Abnormal, Papanicolaou

(smear)

dark adaptation curve H53.61

dentofacial NEC — see Anomaly, dentofacial

development, developmental Q89.9

central nervous system Q07.9

diagnostic imaging

abdomen, abdominal region NEC R93.5

biliary tract R93.2

bladder R93.41

breast R92.8

central nervous system NEC R90.89

cerebrovascular NEC R90.89

coronary circulation R93.1

digestive tract NEC R93.3

gastrointestinal (tract) R93.3

genitourinary organs R93.89

head R93.0

heart R93.1

intrathoracic organ NEC R93.89

kidney R93.42- ✓

limbs R93.6

liver R93.2

lung (field) R91.8

musculoskeletal system NEC R93.7

renal pelvis R93.41

retroperitoneum R93.5

site specified NEC R93.89

skin and subcutaneous tissue R93.89

skull R93.0

testis R93.81- ✓

ureter R93.41

urinary organs specified NEC R93.49

direction, teeth, fully erupted M26.30

ear ossicles, acquired NEC H74.39- ✓

ankylosis — see Ankylosis, ear ossicles

discontinuity — see Discontinuity, ossicles, ear

partial loss — see Loss, ossicles, ear (partial)

Ebstein Q22.5

echocardiogram R93.1

echoencephalogram R90.81

echogram — see Abnormal, diagnostic imaging

electrocardiogram [ECG] [EKG] R94.31

electroencephalogram [EEG] R94.01

electrolyte — see Imbalance, electrolyte

electromyogram [EMG] R94.131

electro-oculogram [EOG] R94.110

electrophysiological intracardiac studies R94.39

electroretinogram [ERG] R94.111

erythrocytes

congenital, with perinatal jaundice D58.9

feces (color) (contents) (mucus) R19.5

finding — see Findings, abnormal, without diagnosis

fluid

amniotic — see Abnormal, specimen, specified

cerebrospinal — see Abnormal, cerebrospinal fluid

peritoneal — see Abnormal, specimen, digestive or-

gans

pleural — see Abnormal, specimen, respiratory organs

synovial — see Abnormal, specimen, specified

thorax (bronchial washings) (pleural fluid) — see Ab-

normal, specimen, respiratory organs

vaginal — see Abnormal, specimen, female genital

organs

form

teeth K00.2

uterus — see Anomaly, uterus



	Malignant Primary	Malignant Secondary	Ca in situ	Benign	Uncertain Behavior	Unspecified Behavior		Malignant Primary	Malignant Secondary	Ca in situ	Benign	Uncertain Behavior	Unspecified Behavior
<b>Neoplasm, neoplastic</b> — <i>continued</i>							<b>Neoplasm, neoplastic</b> — <i>continued</i>						
brain — <i>continued</i>							bronchus — <i>continued</i>						
basal ganglia	C71.0	C79.31	—	D33.0	D43.0	D49.6	main	C34.0-✓	C78.0-✓	D02.2-✓	D14.3-✓	D38.1	D49.1
cerebellopontine angle	C71.6	C79.31	—	D33.1	D43.1	D49.6	middle lobe of lung	C34.2	C78.0-✓	D02.21	D14.31	D38.1	D49.1
cerebellum NOS	C71.6	C79.31	—	D33.1	D43.1	D49.6	overlapping lesion	C34.8-✓	—	—	—	—	—
cerebrum	C71.0	C79.31	—	D33.0	D43.0	D49.6	upper lobe of lung	C34.1-✓	C78.0-✓	D02.2-✓	D14.3-✓	D38.1	D49.1
choroid plexus	C71.7	C79.31	—	D33.1	D43.1	D49.6	brow	C44.309	C79.2	D04.39	D23.39	D48.5	D49.2
corpus callosum	C71.8	C79.31	—	D33.2	D43.2	D49.6	basal cell carcinoma	C44.319	—	—	—	—	—
corpus striatum	C71.0	C79.31	—	D33.0	D43.0	D49.6	specified type NEC	C44.399	—	—	—	—	—
cortex (cerebral)	C71.0	C79.31	—	D33.0	D43.0	D49.6	squamous cell carcinoma	C44.329	—	—	—	—	—
frontal lobe	C71.1	C79.31	—	D33.0	D43.0	D49.6	buccal (cavity)	C06.9	C79.89	D00.00	D10.39	D37.09	D49.0
globus pallidus	C71.0	C79.31	—	D33.0	D43.0	D49.6	commissure	C06.0	C79.89	D00.02	D10.39	D37.09	D49.0
hippocampus	C71.2	C79.31	—	D33.0	D43.0	D49.6	groove (lower)	C06.1	C79.89	D00.02	D10.39	D37.09	D49.0
hypothalamus	C71.0	C79.31	—	D33.0	D43.0	D49.6	(upper)	C06.0	C79.89	D00.02	D10.39	D37.09	D49.0
internal capsule	C71.0	C79.31	—	D33.0	D43.0	D49.6	mucosa	C06.0	C79.89	D00.02	D10.39	D37.09	D49.0
medulla oblongata	C71.7	C79.31	—	D33.1	D43.1	D49.6	sulcus (lower)	C06.1	C79.89	D00.02	D10.39	D37.09	D49.0
meninges	C70.0	C79.32	—	D32.0	D42.0	D49.7	(upper)	C06.1	C79.89	D00.02	D10.39	D37.09	D49.0
midbrain	C71.7	C79.31	—	D33.1	D43.1	D49.6	bulbourethral gland	C68.0	C79.19	D09.19	D30.4	D41.3	D49.59
occipital lobe	C71.4	C79.31	—	D33.0	D43.0	D49.6	bursa — <i>see</i> Neoplasm, connective tissue	C76.3	C79.89	D04.5	D36.7	D48.7	D49.89
overlapping lesion	C71.8	C79.31	—	—	—	—	buttock NEC	C76.5-✓	C79.89	D04.7-✓	D36.7	D48.7	D49.89
parietal lobe	C71.3	C79.31	—	D33.0	D43.0	D49.6	calvarium	C41.0	C79.51	—	D16.4	D48.0	D49.2
peduncle	C71.7	C79.31	—	D33.1	D43.1	D49.6	calyx, renal canal	C65.1-✓	C79.0-✓	D09.19	D30.1-✓	D41.1-✓	D49.51-✓
pons	C71.7	C79.31	—	D33.1	D43.1	D49.6	anal	C21.1	C78.5	D01.3	D12.9	D37.8	D49.0
stem	C71.7	C79.31	—	D33.1	D43.1	D49.6	auditory (external) — <i>see also</i> Neoplasm, skin, ear	C44.20-✓	C79.2	D04.2-✓	D23.2-✓	D48.5	D49.2
tapetum	C71.8	C79.31	—	D33.2	D43.2	D49.6	auricular (external) — <i>see also</i> Neoplasm, skin, ear	C44.20-✓	C79.2	D04.2-✓	D23.2-✓	D48.5	D49.2
temporal lobe	C71.2	C79.31	—	D33.0	D43.0	D49.6	canaliculi, biliary (biliferi)	C22.1	C78.7	D01.5	D13.4	D37.6	D49.0
thalamus	C71.0	C79.31	—	D33.0	D43.0	D49.6	(intrahepatic)	C44.10-✓	C79.2	D04.1-✓	D23.1-✓	D48.5	D49.2
uncus	C71.2	C79.31	—	D33.0	D43.0	D49.6	canthus (eye) (inner)	C44.11-✓	—	—	—	—	—
ventricle (floor)	C71.5	C79.31	—	D33.0	D43.0	D49.6	(outer)	C44.13-✓	—	—	—	—	—
fourth	C71.7	C79.31	—	D33.1	D43.1	D49.6	basal cell carcinoma	C44.19-✓	—	—	—	—	—
branchial (left) (cyst) (vestigis)	C10.4	C79.89	D00.08	D10.5	D37.05	D49.0	squamous cell carcinoma	C44.12-✓	—	—	—	—	—
breast (connective tissue) (glandular tissue) (soft parts)	C50.9-✓	C79.81	D05.1-✓	D24.1-✓	D48.6-✓	D49.3	capillary — <i>see</i> Neoplasm, connective tissue	C18.0	C78.5	D01.0	D12.0	D37.4	D49.0
areola	C50.0-✓	C79.81	D05.1-✓	D24.1-✓	D48.6-✓	D49.3	caput coli	C16.0	C78.89	D00.2	D13.1	D37.1	D49.0
axillary tail	C50.6-✓	C79.81	D05.1-✓	D24.1-✓	D48.6-✓	D49.3	carcinoid — <i>see</i> Tumor, carcinoid	C16.0	C78.89	D00.2	D13.1	D37.1	D49.0
central portion	C50.1-✓	C79.81	D05.1-✓	D24.1-✓	D48.6-✓	D49.3	cardia (gastric)	C16.0	C78.89	D00.2	D13.1	D37.1	D49.0
inner	C50.8-✓	C79.81	D05.1-✓	D24.1-✓	D48.6-✓	D49.3	cardiac orifice (stomach)	C16.0	C78.89	D00.2	D13.1	D37.1	D49.0
lower	C50.8-✓	C79.81	D05.1-✓	D24.1-✓	D48.6-✓	D49.3	cardio-esophageal junction	C16.0	C78.89	D00.2	D13.1	D37.1	D49.0
lower-inner quadrant	C50.3-✓	C79.81	D05.1-✓	D24.1-✓	D48.6-✓	D49.3	cardio-esophagus carina (bronchus)	C34.0-✓	C78.0-✓	D02.2-✓	D14.3-✓	D38.1	D49.1
lower-outer quadrant	C50.5-✓	C79.81	D05.1-✓	D24.1-✓	D48.6-✓	D49.3	carotid (artery)	C49.0	C79.89	—	D21.0	D48.1	D49.2
mastectomy site (skin) — <i>see also</i> Neoplasm, breast, skin	C44.501	C79.2	—	—	—	—	body	C75.4	C79.89	—	D35.5	D44.6	D49.7
specified as breast tissue	C50.8-✓	C79.81	—	—	—	—	carpus (any bone)	C40.1-✓	C79.51	—	D16.1-✓	—	—
midline	C50.8-✓	C79.81	D05.1-✓	D24.1-✓	D48.6-✓	D49.3	cartilage (articular) (joint) NEC — <i>see also</i> Neoplasm, bone	C41.9	C79.51	—	D16.9	D48.0	D49.2
nipple	C50.0-✓	C79.81	D05.1-✓	D24.1-✓	D48.6-✓	D49.3	arytenoid	C32.3	C78.39	D02.0	D14.1	D38.0	D49.1
outer	C50.8-✓	C79.81	D05.1-✓	D24.1-✓	D48.6-✓	D49.3	auricular	C49.0	C79.89	—	D21.0	D48.1	D49.2
overlapping lesion	C50.8-✓	—	—	—	—	—	bronchi	C34.0-✓	C78.39	—	D14.3-✓	D38.1	D49.1
skin	C44.501	C79.2	D04.5	D23.5	D48.5	D49.2	costal	C41.3	C79.51	—	D16.7	D48.0	D49.2
basal cell carcinoma	C44.511	—	—	—	—	—	cricoid	C32.3	C78.39	D02.0	D14.1	D38.0	D49.1
specified type NEC	C44.591	—	—	—	—	—	cuneiform	C32.3	C78.39	D02.0	D14.1	D38.0	D49.1
squamous cell carcinoma	C44.521	—	—	—	—	—	ear (external)	C49.0	C79.89	—	D21.0	D48.1	D49.2
tail (axillary)	C50.6-✓	C79.81	D05.1-✓	D24.1-✓	D48.6-✓	D49.3	ensiform	C41.3	C79.51	—	D16.7	D48.0	D49.2
upper	C50.8-✓	C79.81	D05.1-✓	D24.1-✓	D48.6-✓	D49.3	epiglottis	C32.1	C78.39	D02.0	D14.1	D38.0	D49.1
upper-inner quadrant	C50.2-✓	C79.81	D05.1-✓	D24.1-✓	D48.6-✓	D49.3							
upper-outer quadrant	C50.4-✓	C79.81	D05.1-✓	D24.1-✓	D48.6-✓	D49.3							
broad ligament	C57.1-✓	C79.82	D07.39	D28.2	D39.8	D49.59							
bronchiogenic, bronchogenic (lung)	C34.9-✓	C78.0-✓	D02.2-✓	D14.3-✓	D38.1	D49.1							
bronchiole	C34.9-✓	C78.0-✓	D02.2-✓	D14.3-✓	D38.1	D49.1							
bronchus	C34.9-✓	C78.0-✓	D02.2-✓	D14.3-✓	D38.1	D49.1							
carina	C34.0-✓	C78.0-✓	D02.2-✓	D14.3-✓	D38.1	D49.1							
lower lobe of lung	C34.3-✓	C78.0-✓	D02.2-✓	D14.3-✓	D38.1	D49.1							

Substance	Poisoning, Accidental (unintentional)	Poisoning, Intentional Self-harm	Poisoning, Assault	Poisoning, Undetermined	Adverse Effect	Under-dosing	Substance	Poisoning, Accidental (unintentional)	Poisoning, Intentional Self-harm	Poisoning, Assault	Poisoning, Undetermined	Adverse Effect	Under-dosing
<b>Androstalolone</b>	T38.7X1	T38.7X2	T38.7X3	T38.7X4	T38.7X5	T38.7X6	<b>Anthilimine</b>	T37.4X1	T37.4X2	T37.4X3	T37.4X4	T37.4X5	T37.4X6
<b>Androstanolone</b>	T38.7X1	T38.7X2	T38.7X3	T38.7X4	T38.7X5	T38.7X6	<b>Anthrallin</b>	T49.4X1	T49.4X2	T49.4X3	T49.4X4	T49.4X5	T49.4X6
<b>Androsterone</b>	T38.7X1	T38.7X2	T38.7X3	T38.7X4	T38.7X5	T38.7X6	<b>Anthracycline</b>	T45.1X1	T45.1X2	T45.1X3	T45.1X4	T45.1X5	T45.1X6
<b>Anemone pulsatilla</b>	T62.2X1	T62.2X2	T62.2X3	T62.2X4	—	—	<b>Antidiabetic drug NEC</b>	T44.8X1	T44.8X2	T44.8X3	T44.8X4	T44.8X5	T44.8X6
<b>Anesthesia</b>							<b>Antiallergic drug NEC</b>	T45.0X1	T45.0X2	T45.0X3	T45.0X4	T45.0X5	T45.0X6
caudal	T41.3X1	T41.3X2	T41.3X3	T41.3X4	T41.3X5	T41.3X6	<b>Antianginal drug NEC</b>	T38.6X1	T38.6X2	T38.6X3	T38.6X4	T38.6X5	T38.6X6
endotracheal	T41.0X1	T41.0X2	T41.0X3	T41.0X4	T41.0X5	T41.0X6	<b>Anti-anemic (drug) (preparation)</b>	T45.8X1	T45.8X2	T45.8X3	T45.8X4	T45.8X5	T45.8X6
epidural	T41.3X1	T41.3X2	T41.3X3	T41.3X4	T41.3X5	T41.3X6	<b>Antianxiety drug NEC</b>	T43.501	T43.502	T43.503	T43.504	T43.505	T43.506
inhalation	T41.0X1	T41.0X2	T41.0X3	T41.0X4	T41.0X5	T41.0X6	<b>Antiarthritis drug NEC</b>	T65.891	T65.892	T65.893	T65.894	—	—
local	T41.3X1	T41.3X2	T41.3X3	T41.3X4	T41.3X5	T41.3X6	<b>Antiartherosclerotic drug</b>	T46.6X1	T46.6X2	T46.6X3	T46.6X4	T46.6X5	T46.6X6
mucosal	T41.3X1	T41.3X2	T41.3X3	T41.3X4	T41.3X5	T41.3X6	<b>Antiasthmatic drug NEC</b>	T48.6X1	T48.6X2	T48.6X3	T48.6X4	T48.6X5	T48.6X6
muscle relaxation	T48.1X1	T48.1X2	T48.1X3	T48.1X4	T48.1X5	T48.1X6	<b>Antibiotic Otic Suspension (Solution)*</b>	T49.6X1	T49.6X2	T49.6X3	T49.6X4	T49.6X5	T49.6X6
nerve blocking	T41.3X1	T41.3X2	T41.3X3	T41.3X4	T41.3X5	T41.3X6	<b>Antibiotic NEC</b>	T36.91	T36.92	T36.93	T36.94	T36.95	T36.96
plexus blocking	T41.3X1	T41.3X2	T41.3X3	T41.3X4	T41.3X5	T41.3X6	aminoglycoside	T36.5X1	T36.5X2	T36.5X3	T36.5X4	T36.5X5	T36.5X6
potentiated	T41.201	T41.202	T41.203	T41.204	T41.205	T41.206	antibacterial	T45.1X1	T45.1X2	T45.1X3	T45.1X4	T45.1X5	T45.1X6
rectal	T41.201	T41.202	T41.203	T41.204	T41.205	T41.206	antifungal	T36.7X1	T36.7X2	T36.7X3	T36.7X4	T36.7X5	T36.7X6
general	T41.201	T41.202	T41.203	T41.204	T41.205	T41.206	antimycobacterial	T36.5X1	T36.5X2	T36.5X3	T36.5X4	T36.5X5	T36.5X6
local	T41.3X1	T41.3X2	T41.3X3	T41.3X4	T41.3X5	T41.3X6	antineoplastic	T45.1X1	T45.1X2	T45.1X3	T45.1X4	T45.1X5	T45.1X6
regional	T41.3X1	T41.3X2	T41.3X3	T41.3X4	T41.3X5	T41.3X6	b-lactam NEC	T36.1X1	T36.1X2	T36.1X3	T36.1X4	T36.1X5	T36.1X6
surface	T41.3X1	T41.3X2	T41.3X3	T41.3X4	T41.3X5	T41.3X6	cephalosporin (group)	T36.1X1	T36.1X2	T36.1X3	T36.1X4	T36.1X5	T36.1X6
<b>Anesthetic NEC — see also Anesthesia</b>	T41.41	T41.42	T41.43	T41.44	T41.45	T41.46	chloramphenicol (group)	T36.2X1	T36.2X2	T36.2X3	T36.2X4	T36.2X5	T36.2X6
with muscle relaxant	T41.201	T41.202	T41.203	T41.204	T41.205	T41.206	ENT	T49.6X1	T49.6X2	T49.6X3	T49.6X4	T49.6X5	T49.6X6
general	T41.201	T41.202	T41.203	T41.204	T41.205	T41.206	eye	T49.5X1	T49.5X2	T49.5X3	T49.5X4	T49.5X5	T49.5X6
local	T41.3X1	T41.3X2	T41.3X3	T41.3X4	T41.3X5	T41.3X6	fungicidal (local)	T49.0X1	T49.0X2	T49.0X3	T49.0X4	T49.0X5	T49.0X6
gaseous NEC	T41.0X1	T41.0X2	T41.0X3	T41.0X4	T41.0X5	T41.0X6	intestinal	T36.8X1	T36.8X2	T36.8X3	T36.8X4	T36.8X5	T36.8X6
general NEC	T41.201	T41.202	T41.203	T41.204	T41.205	T41.206	local	T49.0X1	T49.0X2	T49.0X3	T49.0X4	T49.0X5	T49.0X6
halogenated hydrocarbon derivatives NEC	T41.0X1	T41.0X2	T41.0X3	T41.0X4	T41.0X5	T41.0X6	macrolides	T36.3X1	T36.3X2	T36.3X3	T36.3X4	T36.3X5	T36.3X6
infiltration NEC	T41.3X1	T41.3X2	T41.3X3	T41.3X4	T41.3X5	T41.3X6	polypeptide	T36.8X1	T36.8X2	T36.8X3	T36.8X4	T36.8X5	T36.8X6
intravenous NEC	T41.1X1	T41.1X2	T41.1X3	T41.1X4	T41.1X5	T41.1X6	specified NEC	T36.8X1	T36.8X2	T36.8X3	T36.8X4	T36.8X5	T36.8X6
local NEC	T41.3X1	T41.3X2	T41.3X3	T41.3X4	T41.3X5	T41.3X6	tetracycline (group)	T36.4X1	T36.4X2	T36.4X3	T36.4X4	T36.4X5	T36.4X6
rectal	T41.201	T41.202	T41.203	T41.204	T41.205	T41.206	throat	T49.6X1	T49.6X2	T49.6X3	T49.6X4	T49.6X5	T49.6X6
general	T41.201	T41.202	T41.203	T41.204	T41.205	T41.206	<b>Anticancer agents NEC</b>	T45.1X1	T45.1X2	T45.1X3	T45.1X4	T45.1X5	T45.1X6
local	T41.3X1	T41.3X2	T41.3X3	T41.3X4	T41.3X5	T41.3X6	<b>Anticholesterolemic drug NEC</b>	T46.6X1	T46.6X2	T46.6X3	T46.6X4	T46.6X5	T46.6X6
regional NEC	T41.3X1	T41.3X2	T41.3X3	T41.3X4	T41.3X5	T41.3X6	<b>Anticholinergic drug NEC</b>	T44.3X1	T44.3X2	T44.3X3	T44.3X4	T44.3X5	T44.3X6
thiobarbiturate	T41.1X1	T41.1X2	T41.1X3	T41.1X4	T41.1X5	T41.1X6	<b>Anticholinesterase</b>	T44.0X1	T44.0X2	T44.0X3	T44.0X4	T44.0X5	T44.0X6
topical	T41.3X1	T41.3X2	T41.3X3	T41.3X4	T41.3X5	T41.3X6	organophosphorus	T44.0X1	T44.0X2	T44.0X3	T44.0X4	T44.0X5	T44.0X6
<b>Aneurine</b>	T45.2X1	T45.2X2	T45.2X3	T45.2X4	T45.2X5	T45.2X6	insecticide	T60.0X1	T60.0X2	T60.0X3	T60.0X4	—	—
<b>Angeliq*</b>	T38.5X1	T38.5X2	T38.5X3	T38.5X4	T38.5X5	T38.5X6	nerve gas	T59.891	T59.892	T59.893	T59.894	—	—
<b>Angio-Conray</b>	T50.8X1	T50.8X2	T50.8X3	T50.8X4	T50.8X5	T50.8X6	reversible	T44.0X1	T44.0X2	T44.0X3	T44.0X4	T44.0X5	T44.0X6
<b>Angiotensin</b>	T44.5X1	T44.5X2	T44.5X3	T44.5X4	T44.5X5	T44.5X6	ophthalmological	T49.5X1	T49.5X2	T49.5X3	T49.5X4	T49.5X5	T49.5X6
<b>Angiotensinamide</b>	T44.991	T44.992	T44.993	T44.994	T44.995	T44.996	<b>Anticoagulant drug NEC</b>	T45.511	T45.512	T45.513	T45.514	T45.515	T45.516
<b>Anhydrohydroxy-progesterone</b>	T38.5X1	T38.5X2	T38.5X3	T38.5X4	T38.5X5	T38.5X6	Antagonist	T45.7X1	T45.7X2	T45.7X3	T45.7X4	T45.7X5	T45.7X6
<b>Anhydron</b>	T50.2X1	T50.2X2	T50.2X3	T50.2X4	T50.2X5	T50.2X6	<b>Anti-common-cold drug NEC</b>	T48.5X1	T48.5X2	T48.5X3	T48.5X4	T48.5X5	T48.5X6
<b>Anilidine</b>	T40.491	T40.492	T40.493	T40.494	T40.495	T40.496	<b>Anticonvulsant</b>	T42.71	T42.72	T42.73	T42.74	T42.75	T42.76
<b>Aniline (dye) (liquid)</b>	T65.3X1	T65.3X2	T65.3X3	T65.3X4	—	—	barbiturate	T42.3X1	T42.3X2	T42.3X3	T42.3X4	T42.3X5	T42.3X6
analgesic	T39.1X1	T39.1X2	T39.1X3	T39.1X4	T39.1X5	T39.1X6	combination (with barbiturate)	T42.3X1	T42.3X2	T42.3X3	T42.3X4	T42.3X5	T42.3X6
derivatives, therapeutic	T39.1X1	T39.1X2	T39.1X3	T39.1X4	T39.1X5	T39.1X6	hydantoin	T42.0X1	T42.0X2	T42.0X3	T42.0X4	T42.0X5	T42.0X6
vapor	T65.3X1	T65.3X2	T65.3X3	T65.3X4	—	—	hypnotic NEC	T42.6X1	T42.6X2	T42.6X3	T42.6X4	T42.6X5	T42.6X6
<b>Anisocorpine</b>	T44.3X1	T44.3X2	T44.3X3	T44.3X4	T44.3X5	T44.3X6	oxazolindione	T42.2X1	T42.2X2	T42.2X3	T42.2X4	T42.2X5	T42.2X6
<b>Anise oil</b>	T47.5X1	T47.5X2	T47.5X3	T47.5X4	T47.5X5	T47.5X6	pyrimidinone	T42.6X1	T42.6X2	T42.6X3	T42.6X4	T42.6X5	T42.6X6
<b>Anisidine</b>	T65.3X1	T65.3X2	T65.3X3	T65.3X4	—	—	specified NEC	T42.6X1	T42.6X2	T42.6X3	T42.6X4	T42.6X5	T42.6X6
<b>Anisindione</b>	T45.511	T45.512	T45.513	T45.514	T45.515	T45.516	succinimide	T42.2X1	T42.2X2	T42.2X3	T42.2X4	T42.2X5	T42.2X6
<b>Anisotropine</b>	T44.3X1	T44.3X2	T44.3X3	T44.3X4	T44.3X5	T44.3X6	<b>Antidepressant</b>	T43.201	T43.202	T43.203	T43.204	T43.205	T43.206
methyl-bromide	T44.3X1	T44.3X2	T44.3X3	T44.3X4	T44.3X5	T44.3X6	monoamine oxidase inhibitor	T43.1X1	T43.1X2	T43.1X3	T43.1X4	T43.1X5	T43.1X6
<b>Anistreplase</b>	T45.611	T45.612	T45.613	T45.614	T45.615	T45.616	selective serotonin reuptake inhibitor	T43.211	T43.212	T43.213	T43.214	T43.215	T43.216
<b>Anorexiant (central)</b>	T50.5X1	T50.5X2	T50.5X3	T50.5X4	T50.5X5	T50.5X6	norepinephrine reuptake inhibitor	T43.221	T43.222	T43.223	T43.224	T43.225	T43.226
<b>Anorexic agents</b>	T50.5X1	T50.5X2	T50.5X3	T50.5X4	T50.5X5	T50.5X6	selective serotonin reuptake inhibitor	T43.221	T43.222	T43.223	T43.224	T43.225	T43.226
<b>Ansaid*</b>	T39.311	T39.312	T39.313	T39.314	T39.315	T39.316	specified NEC	T43.291	T43.292	T43.293	T43.294	T43.295	T43.296
<b>Ansamycin</b>	T36.6X1	T36.6X2	T36.6X3	T36.6X4	T36.6X5	T36.6X6	tetracycline	T43.021	T43.022	T43.023	T43.024	T43.025	T43.026
<b>Ant (bite) (sting)</b>	T63.421	T63.422	T63.423	T63.424	—	—	triazolopyridine	T43.211	T43.212	T43.213	T43.214	T43.215	T43.216
<b>Antabuse</b>	T50.6X1	T50.6X2	T50.6X3	T50.6X4	T50.6X5	T50.6X6	tricyclic	T43.011	T43.012	T43.013	T43.014	T43.015	T43.016
<b>Antacid NEC</b>	T47.1X1	T47.1X2	T47.1X3	T47.1X4	T47.1X5	T47.1X6	<b>Antidiabetic drug NEC</b>	T38.3X1	T38.3X2	T38.3X3	T38.3X4	T38.3X5	T38.3X6
<b>Antagonist</b>							biguanide	T38.3X1	T38.3X2	T38.3X3	T38.3X4	T38.3X5	T38.3X6
Aldosterone	T50.0X1	T50.0X2	T50.0X3	T50.0X4	T50.0X5	T50.0X6	and sulfonyl combined	T38.3X1	T38.3X2	T38.3X3	T38.3X4	T38.3X5	T38.3X6
alpha-adrenoreceptor	T44.6X1	T44.6X2	T44.6X3	T44.6X4	T44.6X5	T44.6X6	combined	T38.3X1	T38.3X2	T38.3X3	T38.3X4	T38.3X5	T38.3X6
anticoagulant	T45.7X1	T45.7X2	T45.7X3	T45.7X4	T45.7X5	T45.7X6	sulfonylurea	T38.3X1	T38.3X2	T38.3X3	T38.3X4	T38.3X5	T38.3X6
beta-adrenoreceptor	T44.7X1	T44.7X2	T44.7X3	T44.7X4	T44.7X5	T44.7X6	<b>Antidiarrheal drug NEC</b>	T47.6X1	T47.6X2	T47.6X3	T47.6X4	T47.6X5	T47.6X6
extrapyramidal NEC	T44.3X1	T44.3X2	T44.3X3	T44.3X4	T44.3X5	T44.3X6	absorbent	T47.6X1	T47.6X2	T47.6X3	T47.6X4	T47.6X5	T47.6X6
folic acid	T45.1X1	T45.1X2	T45.1X3	T45.1X4	T45.1X5	T45.1X6	<b>Anti-D immunoglobulin (human)</b>	T50.211	T50.212	T50.213	T50.214	T50.215	T50.216
H2 receptor	T47.0X1	T47.0X2	T47.0X3	T47.0X4	T47.0X5	T47.0X6	<b>Antidiphtheria serum</b>	T50.211	T50.212	T50.213	T50.214	T50.215	T50.216
heavy metal	T45.8X1	T45.8X2	T45.8X3	T45.8X4	T45.8X5	T45.8X6	<b>Antidiuretic hormone</b>	T38.891	T38.892	T38.893	T38.894	T38.895	T38.896
narcotic analgesic	T50.7X1	T50.7X2	T50.7X3	T50.7X4	T50.7X5	T50.7X6	<b>Antidote NEC</b>	T50.6X1	T50.6X2	T50.6X3	T50.6X4	T50.6X5	T50.6X6
opiate	T50.7X1	T50.7X2	T50.7X3	T50.7X4	T50.7X5	T50.7X6	heavy metal	T45.8X1	T45.8X2	T45.8X3	T45.8X4	T45.8X5	T45.8X6
pyrimidine	T45.1X1	T45.1X2	T45.1X3	T45.1X4	T45.1X5	T45.1X6	<b>Antidysrhythmic NEC</b>	T46.2X1	T46.2X2	T46.2X3	T46.2X4	T46.2X5	T46.2X6
serotonin	T46.5X1	T46.5X2	T46.5X3	T46.5X4	T46.5X5	T46.5X6							
<b>Antazolin (e)</b>	T45.0X1	T45.0X2	T45.0X3	T45.0X4	T45.0X5	T45.0X6							
<b>Anterior pituitary hormone NEC</b>	T38.811	T38.812	T38.813	T38.814	T38.815	T38.816							
<b>Anthelmintic NEC</b>	T37.4X1	T37.4X2	T37.4X3	T37.4X4	T37.4X5	T37.4X6							

- C02.4 Malignant neoplasm of lingual tonsil** SL  
*EXCLUDES 2* malignant neoplasm of tonsil NOS (C09.9)
- C02.8 Malignant neoplasm of overlapping sites of tongue** SL  
 Malignant neoplasm of two or more contiguous sites of tongue
- C02.9 Malignant neoplasm of tongue, unspecified** SL
- ✓4th C03 Malignant neoplasm of gum**  
*INCLUDES* malignant neoplasm of alveolar (ridge) mucosa  
 malignant neoplasm of gingiva  
 Use additional code to identify:  
 alcohol abuse and dependence (F10.-)  
 history of tobacco dependence (Z87.891)  
 tobacco dependence (F17.-)  
 tobacco use (Z72.0)  
*EXCLUDES 2* malignant odontogenic neoplasms (C41.0-C41.1)
- C03.0 Malignant neoplasm of upper gum** SL
- C03.1 Malignant neoplasm of lower gum** SL
- C03.9 Malignant neoplasm of gum, unspecified** SL
- ✓4th C04 Malignant neoplasm of floor of mouth**  
 Use additional code to identify:  
 alcohol abuse and dependence (F10.-)  
 history of tobacco dependence (Z87.891)  
 tobacco dependence (F17.-)  
 tobacco use (Z72.0)
- C04.0 Malignant neoplasm of anterior floor of mouth** SL  
 Malignant neoplasm of anterior to the premolar-canine junction
- C04.1 Malignant neoplasm of lateral floor of mouth** SL
- C04.8 Malignant neoplasm of overlapping sites of floor of mouth** SL
- C04.9 Malignant neoplasm of floor of mouth, unspecified** SL
- ✓4th C05 Malignant neoplasm of palate**  
 Use additional code to identify:  
 alcohol abuse and dependence (F10.-)  
 history of tobacco dependence (Z87.891)  
 tobacco dependence (F17.-)  
 tobacco use (Z72.0)  
*EXCLUDES 1* Kaposi's sarcoma of palate (C46.2)
- C05.0 Malignant neoplasm of hard palate** SL
- C05.1 Malignant neoplasm of soft palate** SL  
*EXCLUDES 2* malignant neoplasm of nasopharyngeal surface of soft palate (C11.3)
- C05.2 Malignant neoplasm of uvula** SL
- C05.8 Malignant neoplasm of overlapping sites of palate** SL
- C05.9 Malignant neoplasm of palate, unspecified** SL  
 Malignant neoplasm of roof of mouth
- ✓4th C06 Malignant neoplasm of other and unspecified parts of mouth**  
 Use additional code to identify:  
 alcohol abuse and dependence (F10.-)  
 history of tobacco dependence (Z87.891)  
 tobacco dependence (F17.-)  
 tobacco use (Z72.0)
- C06.0 Malignant neoplasm of cheek mucosa** SL  
 Malignant neoplasm of buccal mucosa NOS  
 Malignant neoplasm of internal cheek
- C06.1 Malignant neoplasm of vestibule of mouth** SL  
 Malignant neoplasm of buccal sulcus (upper) (lower)  
 Malignant neoplasm of labial sulcus (upper) (lower)
- C06.2 Malignant neoplasm of retromolar area** SL
- ✓5th C06.8 Malignant neoplasm of overlapping sites of other and unspecified parts of mouth**  
**C06.80 Malignant neoplasm of overlapping sites of unspecified parts of mouth** SL  
**C06.89 Malignant neoplasm of overlapping sites of other parts of mouth** SL  
 "book leaf" neoplasm [ventral surface of tongue and floor of mouth]
- C06.9 Malignant neoplasm of mouth, unspecified** SL  
 Malignant neoplasm of minor salivary gland, unspecified site  
 Malignant neoplasm of oral cavity NOS

**C07 Malignant neoplasm of parotid gland**

Use additional code to identify:

- alcohol abuse and dependence (F10.-)
- exposure to environmental tobacco smoke (Z77.22)
- exposure to tobacco smoke in the perinatal period (P96.81)
- history of tobacco dependence (Z87.891)
- occupational exposure to environmental tobacco smoke (Z57.31)
- tobacco dependence (F17.-)
- tobacco use (Z72.0)

**✓4th C08 Malignant neoplasm of other and unspecified major salivary glands***INCLUDES* malignant neoplasm of salivary ducts

Use additional code to identify:

- alcohol abuse and dependence (F10.-)
- exposure to environmental tobacco smoke (Z77.22)
- exposure to tobacco smoke in the perinatal period (P96.81)
- history of tobacco dependence (Z87.891)
- occupational exposure to environmental tobacco smoke (Z57.31)
- tobacco dependence (F17.-)
- tobacco use (Z72.0)

*EXCLUDES 1* malignant neoplasms of specified minor salivary glands which are classified according to their anatomical location*EXCLUDES 2* malignant neoplasms of minor salivary glands NOS (C06.9)  
 malignant neoplasm of parotid gland (C07)**C08.0 Malignant neoplasm of submandibular gland**

Malignant neoplasm of submaxillary gland

**C08.1 Malignant neoplasm of sublingual gland****C08.9 Malignant neoplasm of major salivary gland, unspecified**

Malignant neoplasm of salivary gland (major) NOS

**✓4th C09 Malignant neoplasm of tonsil**

Use additional code to identify:

- alcohol abuse and dependence (F10.-)
- exposure to environmental tobacco smoke (Z77.22)
- exposure to tobacco smoke in the perinatal period (P96.81)
- history of tobacco dependence (Z87.891)
- occupational exposure to environmental tobacco smoke (Z57.31)
- tobacco dependence (F17.-)
- tobacco use (Z72.0)

*EXCLUDES 2* malignant neoplasm of lingual tonsil (C02.4)

malignant neoplasm of pharyngeal tonsil (C11.1)

**C09.0 Malignant neoplasm of tonsillar fossa** SL**C09.1 Malignant neoplasm of tonsillar pillar (anterior) (posterior)** SL**C09.8 Malignant neoplasm of overlapping sites of tonsil** SL**C09.9 Malignant neoplasm of tonsil, unspecified** SL

Malignant neoplasm of faucial tonsils

Malignant neoplasm of palatine tonsils

Malignant neoplasm of tonsil NOS

**✓4th C10 Malignant neoplasm of oropharynx**

Use additional code to identify:

- alcohol abuse and dependence (F10.-)
- exposure to environmental tobacco smoke (Z77.22)
- exposure to tobacco smoke in the perinatal period (P96.81)
- history of tobacco dependence (Z87.891)
- occupational exposure to environmental tobacco smoke (Z57.31)
- tobacco dependence (F17.-)
- tobacco use (Z72.0)

*EXCLUDES 2* malignant neoplasm of tonsil (C09.-)**DEF:** Oropharynx: Middle portion of pharynx (throat); communicates with the oral cavity, nasopharynx and laryngopharynx.**C10.0 Malignant neoplasm of vallecula** SL**C10.1 Malignant neoplasm of anterior surface of epiglottis** SL

Malignant neoplasm of epiglottis, free border [margin]

Malignant neoplasm of glossoepiglottic fold(s)

*EXCLUDES 2* malignant neoplasm of epiglottis (suprahoid portion) NOS (C32.1)**C10.2 Malignant neoplasm of lateral wall of oropharynx** SL**C10.3 Malignant neoplasm of posterior wall of oropharynx** SL**C10.4 Malignant neoplasm of branchial cleft** SL

Malignant neoplasm of branchial cyst [site of neoplasm]

**C10.8 Malignant neoplasm of overlapping sites of oropharynx** SL

Malignant neoplasm of junctional region of oropharynx

**C10.9 Malignant neoplasm of oropharynx, unspecified** SL



**✓4<sup>th</sup> G04 Encephalitis, myelitis and encephalomyelitis**

**INCLUDES** acute ascending myelitis  
meningoencephalitis  
meningomyelitis

**EXCLUDES 1** encephalopathy NOS (G93.40)

**EXCLUDES 2** acute transverse myelitis (G37.3)  
alcoholic encephalopathy (G31.2)  
multiple sclerosis (G35)  
myalgic encephalomyelitis (G93.32)  
subacute necrotizing myelitis (G37.4)  
toxic encephalitis (G92.8)  
toxic encephalopathy (G92.8)

**DEF:** Encephalitis: Inflammation of the brain, often caused by viral or bacterial infection.

**DEF:** Encephalomyelitis: Inflammatory disease, often viral in nature, that affects the brain and spinal cord.

**DEF:** Myelitis: Inflammation of the spinal cord.

**✓5<sup>th</sup> G04.0 Acute disseminated encephalitis and encephalomyelitis (ADEM)**

**EXCLUDES 1** acute necrotizing hemorrhagic encephalopathy (G04.3-)  
other noninfectious acute disseminated encephalomyelitis (noninfectious ADEM) (G04.81)

**G04.00 Acute disseminated encephalitis and encephalomyelitis, unspecified** ED CC

**RIC Excl:** 03 Non-traumatic brain injury

**G04.01 Postinfectious acute disseminated encephalitis and encephalomyelitis (postinfectious ADEM)** ED CC

**EXCLUDES 1** post chickenpox encephalitis (B01.1)  
post measles encephalitis (B05.0)  
post measles myelitis (B05.1)

**RIC Excl:** 03 Non-traumatic brain injury

**G04.02 Postimmunization acute disseminated encephalitis, myelitis and encephalomyelitis** ED

Encephalitis, post immunization  
Encephalomyelitis, post immunization

**Use additional code to identify the vaccine (T50.A-, T50.B-, T50.Z-)**

**G04.1 Tropical spastic paraplegia****G04.2 Bacterial meningoencephalitis and meningomyelitis, not elsewhere classified** CC

**RIC Excl:** 03 Non-traumatic brain injury; 05 Non-traumatic spinal cord injury

**✓5<sup>th</sup> G04.3 Acute necrotizing hemorrhagic encephalopathy**

**EXCLUDES 1** acute disseminated encephalitis and encephalomyelitis (G04.0-)

**G04.30 Acute necrotizing hemorrhagic encephalopathy, unspecified** ED CC

**RIC Excl:** 03 Non-traumatic brain injury

**G04.31 Postinfectious acute necrotizing hemorrhagic encephalopathy** ED CC

**RIC Excl:** 03 Non-traumatic brain injury

**G04.32 Postimmunization acute necrotizing hemorrhagic encephalopathy** ED

**Use additional code to identify the vaccine (T50.A-, T50.B-, T50.Z-)**

**G04.39 Other acute necrotizing hemorrhagic encephalopathy** ED CC

**Code also underlying etiology, if applicable**

**RIC Excl:** 03 Non-traumatic brain injury

**✓5<sup>th</sup> G04.8 Other encephalitis, myelitis and encephalomyelitis**

**Code also any associated seizure (G40.-, R56.9)**

**G04.81 Other encephalitis and encephalomyelitis** ED CC

Noninfectious acute disseminated encephalomyelitis (noninfectious ADEM)

**RIC Excl:** 03 Non-traumatic brain injury

**G04.82 Acute flaccid myelitis** ED CC

**EXCLUDES 1** transverse myelitis (G37.3)

**AHA:** 2021.4Q.11

**RIC Excl:** 03 Non-traumatic brain injury

**G04.89 Other myelitis** ED CC

**AHA:** 2020.1Q.14

**RIC Excl:** 03 Non-traumatic brain injury

**✓5<sup>th</sup> G04.9 Encephalitis, myelitis and encephalomyelitis, unspecified****G04.90 Encephalitis and encephalomyelitis, unspecified** ED CC

Ventriculitis (cerebral) NOS

**RIC Excl:** 03 Non-traumatic brain injury

**G04.91 Myelitis, unspecified** ED CC

**RIC Excl:** 03 Non-traumatic brain injury

**✓4<sup>th</sup> G05 Encephalitis, myelitis and encephalomyelitis in diseases classified elsewhere**

**Code first underlying disease, such as:**

congenital toxoplasmosis encephalitis, myelitis and encephalomyelitis (P37.1)

cytomegaloviral encephalitis, myelitis and encephalomyelitis (B25.8)

encephalitis, myelitis and encephalomyelitis (in) systemic lupus

erythematosus (M32.19)

eosinophilic meningoencephalitis (B83.2)

human immunodeficiency virus [HIV] disease (B20)

poliovirus (A80.-)

suppurative otitis media (H66.01-H66.4)

systemic lupus erythematosus (M32.19)

trichinellosis (B75)

**EXCLUDES 1** adenoviral encephalitis, myelitis and encephalomyelitis (A85.1)  
encephalitis, myelitis and encephalomyelitis (in) measles (B05.0)  
enteroviral encephalitis, myelitis and encephalomyelitis (A85.0)  
herpesviral [herpes simplex] encephalitis, myelitis and encephalomyelitis (B00.4)

listerial encephalitis, myelitis and encephalomyelitis (A32.12)

meningococcal encephalitis, myelitis and encephalomyelitis (A39.81)

mumps encephalitis, myelitis and encephalomyelitis (B26.2)

postchickenpox encephalitis, myelitis and encephalomyelitis (B01.1-)

rubella encephalitis, myelitis and encephalomyelitis (B06.01)

toxoplasmosis encephalitis, myelitis and encephalomyelitis (B58.2)

zoster encephalitis, myelitis and encephalomyelitis (B02.0)

**G05.3 Encephalitis and encephalomyelitis in diseases classified elsewhere** RP ED

Meningoencephalitis in diseases classified elsewhere

**Code first underlying disease**

**G05.4 Myelitis in diseases classified elsewhere** RP ED CC

Meningomyelitis in diseases classified elsewhere

**RIC Excl:** 03 Non-traumatic brain injury

**✓4<sup>th</sup> G06 Intracranial and intraspinal abscess and granuloma**

**Use additional code (B95-B97) to identify infectious agent**

**DEF:** Abscess: Circumscribed collection of pus resulting from bacteria, frequently associated with swelling and other signs of inflammation.

**DEF:** Granuloma: Abnormal, dense collections of cells forming a mass or nodule of chronically inflamed tissue with granulations that is usually associated with an infective process.

**G06.0 Intracranial abscess and granuloma** ED CC

Brain [any part] abscess (embolic)

Cerebellar abscess (embolic)

Cerebral abscess (embolic)

Intracranial epidural abscess or granuloma

Intracranial extradural abscess or granuloma

Intracranial subdural abscess or granuloma

Otogenic abscess (embolic)

**EXCLUDES 1** tuberculous intracranial abscess and granuloma (A17.81)

**RIC Excl:** 03 Non-traumatic brain injury

**G06.1 Intraspinal abscess and granuloma** ED CC

Abscess (embolic) of spinal cord [any part]

Intraspinal epidural abscess or granuloma

Intraspinal extradural abscess or granuloma

Intraspinal subdural abscess or granuloma

**EXCLUDES 1** tuberculous intraspinal abscess and granuloma (A17.81)

**RIC Excl:** 03 Non-traumatic brain injury

**G06.2 Extradural and subdural abscess, unspecified** CC

**RIC Excl:** 03 Non-traumatic brain injury

## Chapter 9. Diseases of the Circulatory System (I00–I99)

### Chapter-specific Guidelines with Coding Examples

The chapter-specific guidelines from the ICD-10-CM Official Guidelines for Coding and Reporting have been provided below. Along with these guidelines are coding examples, contained in the shaded boxes, that have been developed to help illustrate the coding and/or sequencing guidance found in these guidelines.

#### a. Hypertension

The classification presumes a causal relationship between hypertension and heart involvement and between hypertension and kidney involvement, as the two conditions are linked by the term “with” in the Alphabetic Index. These conditions should be coded as related even in the absence of provider documentation explicitly linking them, unless the documentation clearly states the conditions are unrelated.

For hypertension and conditions not specifically linked by relational terms such as “with,” “associated with” or “due to” in the classification, provider documentation must link the conditions in order to code them as related.

##### 1) Hypertension with heart disease

Hypertension with heart conditions classified to I50.- or I51.4–I51.7, I51.89, I51.9, are assigned to a code from category I11, Hypertensive heart disease. Use additional code(s) from category I50, Heart failure, to identify the type(s) of heart failure in those patients with heart failure. The same heart conditions (I50.-, I51.4–I51.7, I51.89, I51.9) with hypertension are coded separately if the provider has documented they are unrelated to the hypertension. Sequence according to the circumstances of the admission/encounter.

Patient is admitted in left heart failure. Patient also has a history of hypertension managed by medication.

**I11.0 Hypertensive heart disease with heart failure**

**I50.1 Left ventricular failure, unspecified**

*Explanation:* Without a diagnostic statement to the contrary, hypertension and heart failure have an assumed causal relationship, and a combination code should be used. An additional code to identify the type of heart failure (I50.-) should also be provided.

##### 2) Hypertensive chronic kidney disease

Assign codes from category I12, Hypertensive chronic kidney disease, when both hypertension and a condition classifiable to category N18, Chronic kidney disease (CKD), are present. CKD should not be coded as hypertensive if the provider indicates the CKD is not related to the hypertension.

The appropriate code from category N18 should be used as a secondary code with a code from category I12 to identify the stage of chronic kidney disease.

See Section I.C.14. Chronic kidney disease.

If a patient has hypertensive chronic kidney disease and acute renal failure, the acute renal failure should also be coded. Sequence according to the circumstances of the admission/encounter.

Patient is admitted with stage IV chronic kidney disease (CKD) due to polycystic kidney disease. Patient also is on lisinopril for hypertension.

**N18.4 Chronic kidney disease, stage 4 (severe)**

**Q61.3 Polycystic kidney, unspecified**

**I10 Essential (primary) hypertension**

*Explanation:* A combination code describing a relationship between hypertension and CKD is not used because the physician documentation identifies the polycystic kidney disease as the cause for the CKD.

##### 3) Hypertensive heart and chronic kidney disease

Assign codes from combination category I13, Hypertensive heart and chronic kidney disease, when there is hypertension with both heart and kidney involvement. If heart failure is present, assign an additional code from category I50 to identify the type of heart failure.

The appropriate code from category N18, Chronic kidney disease, should be used as a secondary code with a code from category I13 to identify the stage of chronic kidney disease.

See Section I.C.14. Chronic kidney disease.

The codes in category I13, Hypertensive heart and chronic kidney disease, are combination codes that include hypertension, heart disease and chronic kidney disease. The Includes note at I13 specifies that the

conditions included at I11 and I12 are included together in I13. If a patient has hypertension, heart disease and chronic kidney disease, then a code from I13 should be used, not individual codes for hypertension, heart disease and chronic kidney disease, or codes from I11 or I12.

For patients with both acute renal failure and chronic kidney disease, the acute renal failure should also be coded. Sequence according to the circumstances of the admission/encounter.

Hypertensive heart and kidney disease with congestive heart failure and stage 2 chronic kidney disease

**I13.0 Hypertensive heart and chronic kidney disease with heart failure and stage 1 through stage 4 chronic kidney disease, or unspecified chronic kidney disease**

**I50.9 Heart failure, unspecified**

**N18.2 Chronic kidney disease, stage 2 (mild)**

*Explanation:* Combination codes in category I13 are used to report conditions classifiable to both categories I11 and I12. Do not report conditions classifiable to I11 and I12 separately. Use additional codes to report type of heart failure and stage of CKD.

##### 4) Hypertensive cerebrovascular disease

For hypertensive cerebrovascular disease, first assign the appropriate code from categories I60–I69, followed by the appropriate hypertension code.

##### 5) Hypertensive retinopathy

Subcategory H35.0, Background retinopathy and retinal vascular changes, should be used along with a code from categories I10–I15, in the Hypertensive diseases section, to include the systemic hypertension. The sequencing is based on the reason for the encounter.

Hypertensive retinopathy of the right eye

**H35.031 Hypertensive retinopathy, right eye**

**I10 Essential (primary) hypertension**

*Explanation:* Hypertensive retinopathy requires two codes: the appropriate subcategory H35.0 code and a code for the hypertension.

##### 6) Hypertension, secondary

Secondary hypertension is due to an underlying condition. Two codes are required: one to identify the underlying etiology and one from category I15 to identify the hypertension. Sequencing of codes is determined by the reason for admission/encounter.

Renovascular hypertension due to renal artery atherosclerosis

**I15.0 Renovascular hypertension**

**I70.1 Atherosclerosis of renal artery**

*Explanation:* Secondary hypertension requires two codes: a code to identify the etiology and the appropriate I15 code.

##### 7) Hypertension, transient

Assign code R03.0, Elevated blood pressure reading without diagnosis of hypertension, unless patient has an established diagnosis of hypertension. Assign code O13.-, Gestational [pregnancy-induced] hypertension without significant proteinuria, or O14.-, Pre-eclampsia, for transient hypertension of pregnancy.

##### 8) Hypertension, controlled

This diagnostic statement usually refers to an existing state of hypertension under control by therapy. Assign the appropriate code from categories I10–I15, Hypertensive diseases.

##### 9) Hypertension, uncontrolled

Uncontrolled hypertension may refer to untreated hypertension or hypertension not responding to current therapeutic regimen. In either case, assign the appropriate code from categories I10–I15, Hypertensive diseases.

##### 10) Hypertensive crisis

Assign a code from category I16, Hypertensive crisis, for documented hypertensive urgency, hypertensive emergency or unspecified hypertensive crisis. Code also any identified hypertensive disease (I10–I15). The sequencing is based on the reason for the encounter.

- L97.908** Non-pressure chronic ulcer of unspecified part of unspecified lower leg with other specified severity **RP ED**
- L97.909** Non-pressure chronic ulcer of unspecified part of unspecified lower leg with unspecified severity **RP ED**
- ✓ 6th** **L97.91** Non-pressure chronic ulcer of unspecified part of right lower leg
- L97.911** Non-pressure chronic ulcer of unspecified part of right lower leg limited to breakdown of skin **ED**
- L97.912** Non-pressure chronic ulcer of unspecified part of right lower leg with fat layer exposed **ED**
- L97.913** Non-pressure chronic ulcer of unspecified part of right lower leg with necrosis of muscle **ED**
- L97.914** Non-pressure chronic ulcer of unspecified part of right lower leg with necrosis of bone **ED**
- L97.915** Non-pressure chronic ulcer of unspecified part of right lower leg with muscle involvement without evidence of necrosis **ED**
- L97.916** Non-pressure chronic ulcer of unspecified part of right lower leg with bone involvement without evidence of necrosis **ED**
- L97.918** Non-pressure chronic ulcer of unspecified part of right lower leg with other specified severity **ED**
- L97.919** Non-pressure chronic ulcer of unspecified part of right lower leg with unspecified severity **ED**
- ✓ 6th** **L97.92** Non-pressure chronic ulcer of unspecified part of left lower leg
- L97.921** Non-pressure chronic ulcer of unspecified part of left lower leg limited to breakdown of skin **ED**
- L97.922** Non-pressure chronic ulcer of unspecified part of left lower leg with fat layer exposed **ED**
- L97.923** Non-pressure chronic ulcer of unspecified part of left lower leg with necrosis of muscle **ED**
- L97.924** Non-pressure chronic ulcer of unspecified part of left lower leg with necrosis of bone **ED**
- L97.925** Non-pressure chronic ulcer of unspecified part of left lower leg with muscle involvement without evidence of necrosis **ED**
- L97.926** Non-pressure chronic ulcer of unspecified part of left lower leg with bone involvement without evidence of necrosis **ED**
- L97.928** Non-pressure chronic ulcer of unspecified part of left lower leg with other specified severity **ED**
- L97.929** Non-pressure chronic ulcer of unspecified part of left lower leg with unspecified severity **ED**

**✓ 4th** **L98 Other disorders of skin and subcutaneous tissue, not elsewhere classified**

**L98.0 Pyogenic granuloma** **RP**

**EXCLUDES 2** pyogenic granuloma of gingiva (K06.8)  
pyogenic granuloma of maxillary alveolar ridge (K04.5)  
pyogenic granuloma of oral mucosa (K13.4)

**DEF:** Solitary polypoid capillary hemangioma often associated with local irritation, trauma, and superimposed inflammation. Located on the skin and gingival or oral mucosa, they bleed easily and may ulcerate and form crusted sores.

**L98.1 Factitial dermatitis** **RP**

Neurotic excoriation

**EXCLUDES 1** excoriation (skin-picking) disorder (F42.4)

**AHA:** 2016,4Q,15

**DEF:** Self-inflicted skin lesions to satisfy an unconscious psychological or emotional need. Methods used to injure the skin include deep excoriations with a sharp instrument, scarification with a knife, or the application of caustic chemicals and burning, sometimes with a cigarette.

**L98.2 Febrile neutrophilic dermatosis [Sweet]** **RP**

**L98.3 Eosinophilic cellulitis [Wells]** **RP**

**✓ 5th** **L98.4 Non-pressure chronic ulcer of skin, not elsewhere classified**

Chronic ulcer of skin NOS

Tropical ulcer NOS

Ulcer of skin NOS

**EXCLUDES 2** gangrene (I96)

pressure ulcer (pressure area) (L89.-)

skin infections (L00–L08)

specific infections classified to A00–B99

ulcer of lower limb NEC (L97.-)

varicose ulcer (I83.0–I83.93)

**AHA:** 2017,4Q,17

**TIP:** The depth and/or severity of a diagnosed nonpressure ulcer can be determined based on medical record documentation from clinicians who are not the patient's provider.

**✓ 6th** **L98.41 Non-pressure chronic ulcer of buttock**

**L98.411** Non-pressure chronic ulcer of buttock limited to breakdown of skin **ED**

**L98.412** Non-pressure chronic ulcer of buttock with fat layer exposed **ED**

**L98.413** Non-pressure chronic ulcer of buttock with necrosis of muscle **ED**

**L98.414** Non-pressure chronic ulcer of buttock with necrosis of bone **ED**

**L98.415** Non-pressure chronic ulcer of buttock with muscle involvement without evidence of necrosis **ED**

**L98.416** Non-pressure chronic ulcer of buttock with bone involvement without evidence of necrosis **ED**

**L98.418** Non-pressure chronic ulcer of buttock with other specified severity **ED**

**L98.419** Non-pressure chronic ulcer of buttock with unspecified severity **ED**

**✓ 6th** **L98.42 Non-pressure chronic ulcer of back**

**L98.421** Non-pressure chronic ulcer of back limited to breakdown of skin **ED**

**L98.422** Non-pressure chronic ulcer of back with fat layer exposed **ED**

**L98.423** Non-pressure chronic ulcer of back with necrosis of muscle **ED**

**L98.424** Non-pressure chronic ulcer of back with necrosis of bone **ED**

**L98.425** Non-pressure chronic ulcer of back with muscle involvement without evidence of necrosis **ED**

**L98.426** Non-pressure chronic ulcer of back with bone involvement without evidence of necrosis **ED**

**L98.428** Non-pressure chronic ulcer of back with other specified severity **ED**

**L98.429** Non-pressure chronic ulcer of back with unspecified severity **ED**

**✓ 6th** **L98.49 Non-pressure chronic ulcer of skin of other sites**

Non-pressure chronic ulcer of skin NOS

**L98.491** Non-pressure chronic ulcer of skin of other sites limited to breakdown of skin **ED**

**L98.492** Non-pressure chronic ulcer of skin of other sites with fat layer exposed **ED**

**L98.493** Non-pressure chronic ulcer of skin of other sites with necrosis of muscle **ED**

**L98.494** Non-pressure chronic ulcer of skin of other sites with necrosis of bone **ED**

**L98.495** Non-pressure chronic ulcer of skin of other sites with muscle involvement without evidence of necrosis **ED**

**L98.496** Non-pressure chronic ulcer of skin of other sites with bone involvement without evidence of necrosis **ED**

**L98.498** Non-pressure chronic ulcer of skin of other sites with other specified severity **ED**

**L98.499** Non-pressure chronic ulcer of skin of other sites with unspecified severity **ED**

- Q18.1 Preauricular sinus and cyst** RP  
Cervicoaural fistula  
Fistula of auricle, congenital
- Q18.2 Other branchial cleft malformations** RP  
Branchial cleft malformation NOS  
Cervical auricle  
Otocephaly
- Q18.3 Webbing of neck** RP  
Pterygium colli  
**DEF:** Congenital malformation characterized by a thick, triangular skinfold that stretches from the lateral side of the neck across the shoulder. It is associated with genetic conditions such as Turner's and Noonan's syndromes.
- Q18.4 Macrostomia** RP  
**DEF:** Rare congenital craniofacial bilateral or unilateral anomaly of the mouth due to malformed maxillary and mandibular processes. It results in an abnormally large mouth extending toward the ear.
- Q18.5 Microstomia** RP
- Q18.6 Macrocheilia** RP  
Hypertrophy of lip, congenital
- Q18.7 Microcheilia** RP
- Q18.8 Other specified congenital malformations of face and neck** RP  
Medial cyst of face and neck  
Medial fistula of face and neck  
Medial sinus of face and neck
- Q18.9 Congenital malformation of face and neck, unspecified** RP  
Congenital anomaly NOS of face and neck

### Congenital malformations of the circulatory system (Q20–Q28)

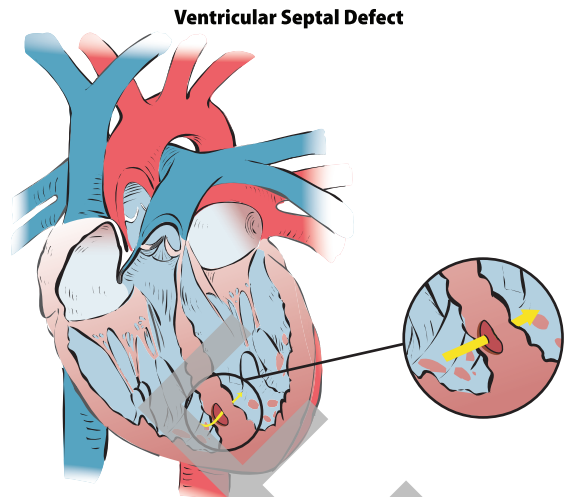
- Q20 Congenital malformations of cardiac chambers and connections** ✓4  
**EXCLUDES 1** dextrocardia with situs inversus (Q89.3)  
mirror-image atrial arrangement with situs inversus (Q89.3)
- Q20.0 Common arterial trunk**  
Persistent truncus arteriosus  
**EXCLUDES 1** aortic septal defect (Q21.4)
- Q20.1 Double outlet right ventricle**  
Taussig-Bing syndrome
- Q20.2 Double outlet left ventricle**
- Q20.3 Discordant ventriculoarterial connection**  
Dextrotransposition of aorta  
Transposition of great vessels (complete)
- Q20.4 Double inlet ventricle**  
Common ventricle  
Cor triloculare biatriatum  
Single ventricle
- Q20.5 Discordant atrioventricular connection**  
Corrected transposition  
Levotransposition  
Ventricular inversion
- Q20.6 Isomerism of atrial appendages**  
Isomerism of atrial appendages with asplenia or polysplenia
- Q20.8 Other congenital malformations of cardiac chambers and connections**  
Cor binoculare
- Q20.9 Congenital malformation of cardiac chambers and connections, unspecified**

### Q21 Congenital malformations of cardiac septa

**EXCLUDES 1** acquired cardiac septal defect (I51.0)

#### Q21.0 Ventricular septal defect

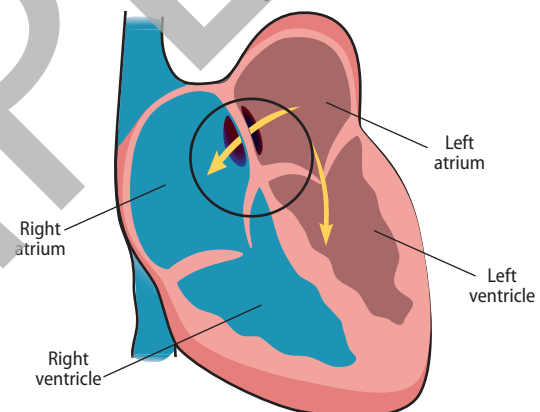
Roger's disease



#### Q21.1 Atrial septal defect

**EXCLUDES 2** ostium primum atrial septal defect (type I) (Q21.20)  
**AHA:** 2022,4Q,39-40

#### Atrial Septal Defect



- Q21.10 Atrial septal defect, unspecified**
- Q21.11 Secundum atrial septal defect**  
Fenestrated atrial septum  
Patent or persistent ostium secundum defect (type II)
- Q21.12 Patent foramen ovale**  
Persistent foramen ovale
- Q21.13 Coronary sinus atrial septal defect**  
Coronary sinus defect  
Unroofed coronary sinus
- Q21.14 Superior sinus venosus atrial septal defect**  
Superior vena cava type atrial septal defect
- Q21.15 Inferior sinus venosus atrial septal defect**  
Inferior vena cava type atrial septal defect
- Q21.16 Sinus venosus atrial septal defect, unspecified**  
Sinus venosus defect, NOS
- Q21.19 Other specified atrial septal defect**  
Common atrium  
Other specified atrial septal abnormality



# Appendix D: Skilled Nursing Facility Patient-Driven Payment Model

## Skilled Nursing Facility Patient-Driven Payment Model

### Payment Calculation Under PDPM

Payment under the Skilled Nursing Facility Patient-Driven Payment Model (PDPM) is based on the sum of six payment components. These include the following:

- Physical therapy
- Occupational therapy
- Speech-language pathology
- Nursing
- Nontherapy ancillary
- Noncase-mix

The first five components are case-mix adjusted to capture the varied needs and characteristics of a resident's care. The sixth component is a noncase-mix component that covers utilization of resources that do not fluctuate according to patient characteristics.

The payment for each component is calculated by multiplying the case-mix index (CMI) for the resident's group, first by the component federal base payment rate, then by the specific day in the variable per diem adjustment schedule, when applicable. Additionally, for residents with HIV/AIDS indicated on their claim, the nursing portion of payment is multiplied by 1.18. These payments are then added, along with the noncase-mix component payment rate, to create a resident's total SNF PPS per diem rate under the PDPM.

### Functional and Cognitive Scoring Under PDPM

Functional status, the ability to conduct certain activities, and cognitive function, the presence or absence of any sort of impairment in cognition, are two important patient characteristics for assessing the care needs of a resident. In the PDPM, this information is calculated using data from section GG of the Minimum Data Set (MDS) 3.0 which offers standardized, comprehensive measures of functional status and therapy needs. Functional scores are calculated for the physical therapy, occupational therapy, and nursing components.

Cognitive scores are used in the calculation of the SLP component. The PDPM Cognitive Score is based on the Cognitive Function Scale (CFS), which combines scores from a Brief Interview for Mental Status (BIMS) score and Cognitive Performance Scale (CPS) score.

### Physical Therapy and Occupational Therapy Components

Both the physical therapy (PT) and occupational therapy (OT) components use a resident's PDPM clinical category and the resident's functional status to assign a resident to a PT/OT case-mix group (CMG).

#### PDPM Clinical Categories

SNF residents are classified based on the primary diagnosis for the SNF stay, using item I0020 on the MDS 3.0. The clinical classification may then be adjusted when the resident received a surgical intervention during the preceding hospital stay associated with that diagnosis. The provider must indicate the type of surgical procedure performed by selecting, as necessary, a surgical procedure category within item J2100 on the MDS 3.0. If the resident did not receive a related surgical procedure during the prior hospital stay, the resident may be categorized into a nonsurgical clinical category. Based on the provisions outlined above, the resident is classified into one of the following 10 clinical categories:

Surgical category:

- Major Joint Replacement or Spinal Surgery
- Nonorthopaedic Surgery
- Orthopedic Surgery (Except Major Joint Replacement or Spinal Surgery)

Nonsurgical category:

- Acute Neurologic
- Nonsurgical Orthopedic/Musculoskeletal
- Medical Management
- Acute Infections
- Cancer
- Pulmonary
- Cardiovascular and Coagulations

#### Collapsed Clinical Categories for PT and OT

Once CMS identified the default clinical categories as those being generally predictive of resource utilization in a SNF, they then undertook the necessary work to identify those categories predictive of PT and OT costs specifically. CMS found that the 10 inpatient clinical categories could be collapsed into four clinical categories, which predict varying degrees of PT and OT costs (see table 1).

**Table 1. Collapsed Clinical Categories for PT and OT Classification**

PDPM Clinical Category	Collapsed PT and OT Clinical Category
Major Joint Replacement or Spinal Surgery	Major Joint Replacement or Spinal Surgery
Non-Orthopedic Surgery Acute Neurologic	Non-Orthopedic Surgery and Acute Neurologic
Non-Surgical Orthopedic/Musculoskeletal Orthopedic Surgery (Except Major Joint Replacement or Spinal Surgery)	Other Orthopedic
Medical Management Acute Infections Cancer Pulmonary Cardiovascular and Coagulations	Medical Management

#### Functional Score for PT and OT

Regression analyses demonstrated that the resident's functional status is also predictive of PT and OT costs in addition to the resident's initial clinical categorization. CMS constructed a new functional score for PT and OT payment based on the newer, IMPACT Act compliant items from section GG of the MDS 3.0 (see table 2).

**Table 2. Section GG Items Included in PT and OT Functional Measure**

Section GG Item Number	Section GG Item Description
GG0130A	Self-care: Eating
GG0130B	Self-care: Oral hygiene
GG0130C	Self-care: Toileting hygiene
GG0170B	Mobility: Sit to lying
GG0170C	Mobility: Lying to sitting on side of bed
GG0170D	Mobility: Sit to stand
GG0170E	Mobility: Chair/bed-to-chair transfer
GG1070F	Mobility: Toilet transfer
GG0170I	Mobility: Walk 10 feet
GG0170J	Mobility: Walk 50 feet with 2 turns
GG0170K	Mobility: Walk 150 feet

#### PT and OT Case-Mix Groups

Under the PDPM, all residents are classified into one and only one of the 16 PT and OT case-mix groups for each of the two components.

These groups classify residents based on the two resident characteristics shown to be most predictive of PT and OT utilization: Clinical category and function score. CMS believes that these PT and OT case-mix groups better reflect relative resource use of clinically relevant resident subpopulations and therefore provide for more appropriate payment under the SNF PPS.

PT and OT case-mix classification groups:

TA, TB, TC, TD, TE, TF, TG, TH, TI, TJ, TK, TL, TM, TN, TO, TP

### Speech-Language Pathology Component

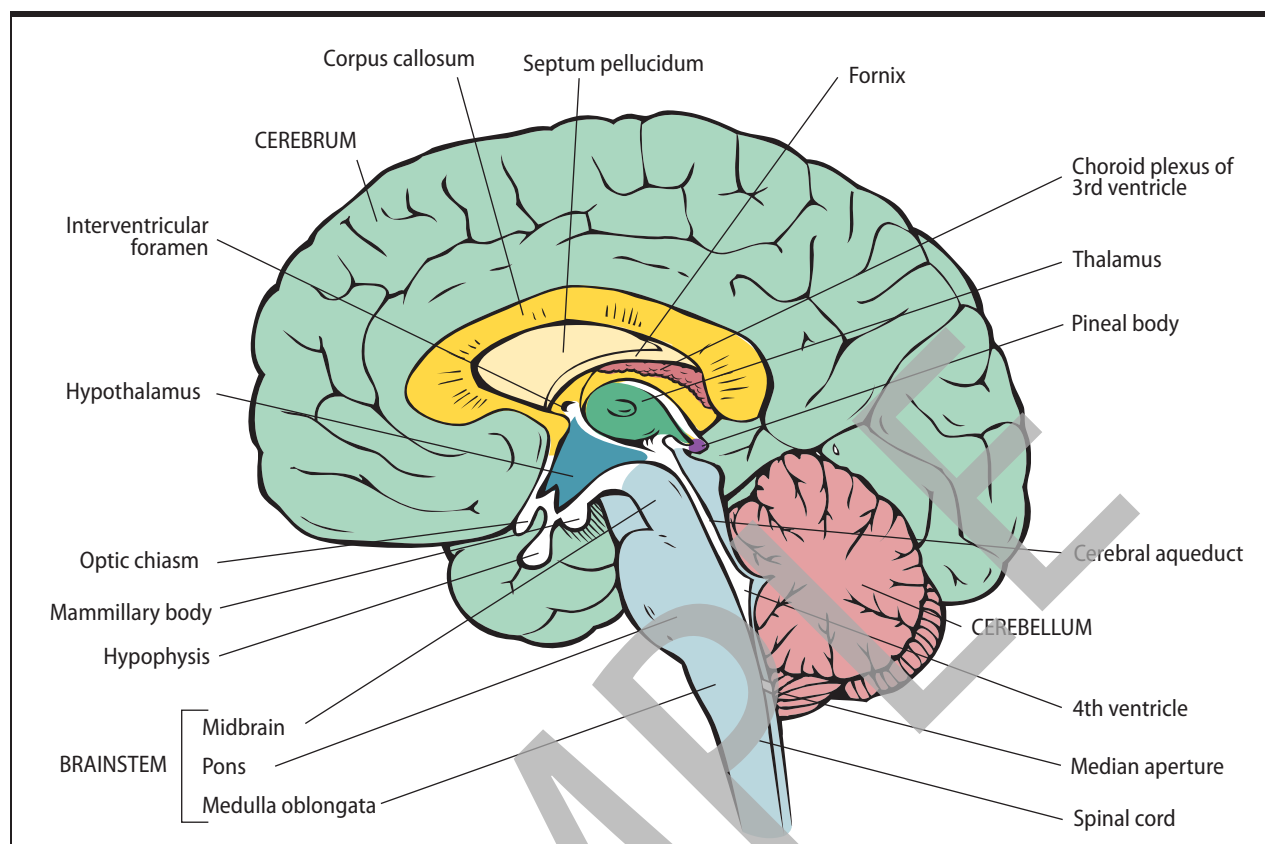
The speech-language pathology (SLP) component uses the resident's PDPM clinical category, cognitive function, the presence of an SLP-related comorbidity, and the presence of a swallowing disorder or mechanically altered diet to assign a resident to an SLP CMG.

#### PDPM Clinical Categories

CMS found only one clinical category predictive of increased SLP costs; the above criteria can be captured only if a resident is classified to the Acute Neurologic clinical category.

## Chapter 6. Diseases of the Nervous System (G00–G99)

### Brain



### Cranial Nerves

