



Expert

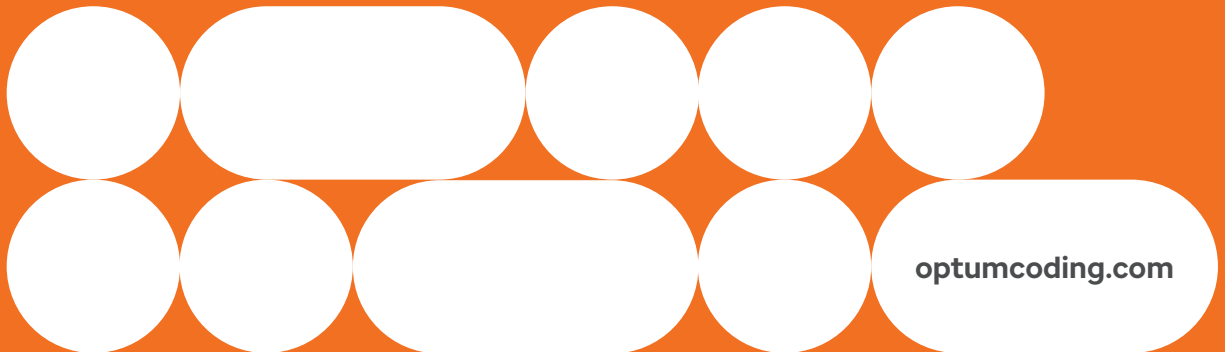
ICD-10-CM Expert for Physicians

The complete official guidelines and code set

Codes valid from October 1, 2026
through September 30, 2027

SAMPLE

2027



optumcoding.com

Contents

How to Use ICD-10-CM Expert for Physicians 2027	iii	Chapter 12. Diseases of the Skin and Subcutaneous Tissue (L00–L99)	745
Introduction	iii	Chapter 13. Diseases of the Musculoskeletal System and Connective Tissue (M00–M99)	767
What’s New for 2027	iii	Chapter 14. Diseases of Genitourinary System (N00–N99)	857
Conversion Table	iii	Chapter 15. Pregnancy, Childbirth, and the Puerperium (O00–O9A)	879
10 Steps to Correct Coding	iii	Chapter 16. Certain Conditions Originating in the Perinatal Period (P00–P96)	919
Official ICD-10-CM Guidelines for Coding and Reporting	iii	Chapter 17. Congenital Malformations, Deformations, and Chromosomal Abnormalities (Q00–Q99)	933
Indexes	iii	Chapter 18. Symptoms, Signs, and Abnormal Clinical and Laboratory Findings, Not Elsewhere Classified (R00–R99)	953
Index to Diseases and Injuries	iii	Chapter 19. Injury, Poisoning, and Certain Other Consequences of External Causes (S00–T88)	975
Neoplasm Table	iii	Chapter 20. External Causes of Morbidity (V00–Y99)	1175
Table of Drugs and Chemicals	iii	Chapter 21. Factors Influencing Health Status and Contact with Health Services (Z00–Z99)	1241
External Causes Index	iii	Chapter 22. Codes for Special Purposes (U00–U85)	1281
Index Notations	iv		
Tabular List of Diseases	v	Appendixes	Appendixes–1
Code and Code Descriptions	v	Appendix A: Valid 3-character ICD-10-CM Codes	Appendixes–1
Tabular Notations	v	Appendix B: Pharmacology List 2027	Appendixes–3
Official Notations	v	Appendix C: Z Codes for Long-Term Drug Use with Associated Drugs	Appendixes–18
Optum Notations	vi	Appendix D: Z Codes Only as Principal/First-Listed Diagnosis	Appendixes–20
Icons	vi	Appendix E: Centers for Medicare & Medicaid Services Hierarchical Condition Categories (CMS-HCC)	Appendixes–21
Color Bars	vii	Appendix F: Centers for Medicare & Medicaid Services Quality Payment Program	Appendixes–23
Chapter-Level Notations	vii		
Appendixes	viii	Illustrations	Illustrations–1
Illustrations	viii	Chapter 3. Diseases of the Blood and Blood-forming Organs and Certain Disorders Involving the Immune Mechanism (D50–D89)	Illustrations–1
		Red Blood Cells	Illustrations–1
		White Blood Cell	Illustrations–1
		Platelet	Illustrations–2
		Coagulation	Illustrations–2
		Spleen Anatomical Location and External Structures	Illustrations–3
		Spleen Interior Structures	Illustrations–3
		Chapter 4. Endocrine, Nutritional, and Metabolic Diseases (E00–E89)	Illustrations–4
		Endocrine System	Illustrations–4
		Thyroid	Illustrations–5
		Thyroid and Parathyroid Glands	Illustrations–5
		Pancreas	Illustrations–6
		Anatomy of the Adrenal Gland	Illustrations–6
		Structure of an Ovary	Illustrations–7
		Testis and Associated Structures	Illustrations–7
		Thymus	Illustrations–8
		Chapter 6. Diseases of the Nervous System (G00–G99)	Illustrations–9
		Brain	Illustrations–9
		Cranial Nerves	Illustrations–9
		Peripheral Nervous System	Illustrations–10
		Spinal Cord and Spinal Nerves	Illustrations–11
		Nerve Cell	Illustrations–12
		Trigeminal and Facial Nerve Branches	Illustrations–12
What’s New for 2027	ix		
Official Updates	ix		
Proprietary Updates	ix		
Conversion Table of ICD-10-CM Codes	x		
10 Steps to Correct Coding	xii		
ICD-10-CM Official Guidelines for Coding and Reporting	Coding Guidelines–1		
ICD-10-CM Index to Diseases and Injuries	1		
ICD-10-CM Neoplasm Table	339		
ICD-10-CM Table of Drugs and Chemicals	358		
ICD-10-CM Index to External Causes	408		
ICD-10-CM Tabular List of Diseases and Injuries	445		
Chapter 1. Certain Infectious and Parasitic Diseases (A00–B99), U07.1, U09.9	445		
Chapter 2. Neoplasms (C00–D49)	471		
Chapter 3. Diseases of the Blood and Blood-forming Organs and Certain Disorders Involving the Immune Mechanism (D50–D89)	513		
Chapter 4. Endocrine, Nutritional, and Metabolic Diseases (E00–E89)	527		
Chapter 5. Mental, Behavioral, and Neurodevelopmental Disorders (F01–F99)	553		
Chapter 6. Diseases of the Nervous System (G00–G99)	585		
Chapter 7. Diseases of the Eye and Adnexa (H00–H59)	609		
Chapter 8. Diseases of the Ear and Mastoid Process (H60–H95)	645		
Chapter 9. Diseases of the Circulatory System (I00–I99)	657		
Chapter 10. Diseases of the Respiratory System (J00–J99), U07.0	703		
Chapter 11. Diseases of the Digestive System (K00–K95)	719		

Chapter 7. Diseases of the Eye and Adnexa (H00–H59).....	Illustrations–13	Chapter 12. Diseases of the Skin and Subcutaneous Tissue (L00–L99).....	Illustrations–31
Eye.....	Illustrations–13	Nail Anatomy.....	Illustrations–31
Posterior Pole of Globe/Flow of Aqueous Humor.....	Illustrations–13	Skin and Subcutaneous Tissue.....	Illustrations–31
Lacrimal System.....	Illustrations–14	Chapter 13. Diseases of the Musculoskeletal System and Connective Tissue (M00–M99).....	Illustrations–32
Eye Musculature.....	Illustrations–14	Bones and Joints.....	Illustrations–32
Eyelid Structures.....	Illustrations–14	Shoulder Anterior View.....	Illustrations–33
Chapter 8. Diseases of the Ear and Mastoid Process (H60–H95).....	Illustrations–15	Shoulder Posterior View.....	Illustrations–33
Ear Anatomy.....	Illustrations–15	Elbow Anterior View.....	Illustrations–33
Chapter 9. Diseases of the Circulatory System (I00–I99).....	Illustrations–16	Elbow Posterior View.....	Illustrations–33
Anatomy of the Heart.....	Illustrations–16	Hand.....	Illustrations–33
Heart Cross Section.....	Illustrations–16	Hip Anterior View.....	Illustrations–34
Heart Valves.....	Illustrations–17	Hip Posterior View.....	Illustrations–34
Heart Conduction System.....	Illustrations–17	Knee Anterior View.....	Illustrations–34
Coronary Arteries.....	Illustrations–18	Knee Posterior View.....	Illustrations–34
Arteries.....	Illustrations–19	Foot.....	Illustrations–34
Veins.....	Illustrations–20	Muscles.....	Illustrations–35
Internal Carotid and Vertebral Arteries and Branches.....	Illustrations–21	Chapter 14. Diseases of Genitourinary System (N00–N99).....	Illustrations–36
External Carotid Artery and Branches.....	Illustrations–21	Urinary System.....	Illustrations–36
Branches of Abdominal Aorta.....	Illustrations–22	Male Genitourinary System.....	Illustrations–37
Portal Venous Circulation.....	Illustrations–22	Female Internal Genitalia.....	Illustrations–37
Lymphatic System.....	Illustrations–23	Female Genitourinary Tract Lateral View.....	Illustrations–37
Axillary Lymph Nodes.....	Illustrations–24	Chapter 15. Pregnancy, Childbirth, and the Puerperium (O00–O9A).....	Illustrations–38
Lymphatic System of Head and Neck.....	Illustrations–24	Term Pregnancy – Single Gestation.....	Illustrations–38
Lymphatic Capillaries.....	Illustrations–25	Twin Gestation–Dichorionic–Diamniotic (DI-DI).....	Illustrations–38
Lymphatic Drainage.....	Illustrations–25	Twin Gestation–Monochorionic–Diamniotic (MO-DI).....	Illustrations–39
Chapter 10. Diseases of the Respiratory System (J00–J99), U07.0.....	Illustrations–26	Twin Gestation–Monochorionic–Monoamniotic (MO-MO).....	Illustrations–39
Respiratory System.....	Illustrations–26	Chapter 19. Injury, Poisoning, and Certain Other Consequences of External Causes (S00–T88).....	Illustrations–40
Upper Respiratory System.....	Illustrations–27	Types of Fractures.....	Illustrations–40
Lower Respiratory System.....	Illustrations–27	Salter-Harris Fracture Types.....	Illustrations–40
Paranasal Sinuses.....	Illustrations–27		
Lung Segments.....	Illustrations–28		
Alveoli.....	Illustrations–28		
Chapter 11. Diseases of the Digestive System (K00–K95).....	Illustrations–29		
Digestive System.....	Illustrations–29		
Omentum and Mesentery.....	Illustrations–30		
Peritoneum and Retroperitoneum.....	Illustrations–30		

How to Use ICD-10-CM Expert for Physicians 2027

Introduction

ICD-10-CM Expert for Physicians: The Complete Official Code Set is your definitive coding resource, combining the work of the National Center for Health Statistics (NCHS), Centers for Medicare and Medicaid Services (CMS), American Hospital Association (AHA), and Optum experts to provide the information you need for coding accuracy.

The International Classification of Diseases, 10th Revision, Clinical Modification (ICD-10-CM), is an adaptation of ICD-10, copyrighted by the World Health Organization (WHO). The development and maintenance of this clinical modification (CM) is the responsibility of the NCHS as authorized by WHO. Any new concepts added to ICD-10-CM are based on an established update process through the collaboration of WHO's Update and Revision Committee and the ICD-10-CM Coordination and Maintenance Committee.

In addition to the ICD-10-CM classification, other official government source information has been included in this manual. Depending on the source, updates to information may be annual or quarterly. This manual provides the most current information that was available at the time of publication. For updates to the source documents that may have occurred after this manual was published, please refer to the following:

- **NCHS, International Classification of Diseases, Tenth Revision, Clinical Modification (ICD-10-CM)**
<https://www.cms.gov/medicare/coding-billing/icd-10-codes/2025-icd-10-cm>
- **CMS Integrated Outpatient Code Editor (IOCE), version 25.2**
<https://www.cms.gov/Medicare/Coding/OutpatientCodeEdit/OCEQtrReleaseSpecs.html>
- **CMS-HCC Risk Adjustment Model, version 28**
- **CMS ESRD-HCC Risk Adjustment Model, version 24**
- **CMS RxHCC Risk Adjustment Model, version 08**
<https://www.cms.gov/Medicare/Health-Plans/MedicareAdvtgSpecRateStats/Risk-Adjustors.html>
- **HHS-HCC Commercial Risk Adjustment Model, version 07**
<https://www.cms.gov/CCIIO/Resources/Regulations-and-Guidance>
- **CMS Quality Payment Program (QPP)**
<https://qpp.cms.gov/mips/explore-measures>
- **AHA Coding Clinics**
<https://www.codingclinicadvisor.com/>

Significant updates to this manual will be provided on our product updates page at [Optumcoding.com](https://www.optumcoding.com), which can be accessed at the following:

<https://www.optumcoding.com/ProductUpdates/>
Password: XXXXXX

The official NCHS ICD-10-CM classification includes three main sections: the guidelines, the indexes, and the tabular list, all of which make up the bulk of this coding manual. To complement the classification, Optum's coding experts have incorporated Medicare-related coding edits and proprietary features, such as supplementary notations, coding tools, and appendixes, into a comprehensive and easy-to-use reference. This publication is organized as follows:

What's New for 2025

This section provides a high-level overview of the code changes made for fiscal 2025. The list of codes provided identifies new, revised, and deleted codes. Asterisked codes identify prior midyear changes that were made to

the classification, effective April 1, 2024. All changes are based on official addenda, provided by the NCHS.

Conversion Table

The conversion table was developed by NCHS to help facilitate data retrieval as new codes are added to the ICD-10-CM classification. This table provides a crosswalk from each fiscal 2025 new code to the equivalent code(s) assigned, prior to October 1, 2024, for that diagnosis or condition. Asterisked codes identify prior midyear additions, effective April 1, 2024. For the full conversion table, refer to the Conversion Table zip file at <https://www.cms.gov/medicare/coding-billing/icd-10-codes/2025-icd-10-cm>.

10 Steps to Correct Coding

This step-by-step tutorial walks the coder through the process of finding the correct code — from locating the code in the official indexes to verifying the code in the tabular section — while following applicable conventions, guidelines, and instructional notes. Specific examples are provided with detailed explanations of each coding step along with advice for proper sequencing.

Official ICD-10-CM Guidelines for Coding and Reporting

This section provides the full official conventions and guidelines regulating the appropriate assignment and reporting of ICD-10-CM codes. These conventions and guidelines are published by the U.S. Department of Health and Human Services (DHHS) and approved by the cooperating parties (American Health Information Management Association [AHIMA], NCHS, Centers for Disease Control and Prevention [CDC], and the American Hospital Association [AHA]).

Indexes

Index to Diseases and Injuries

The Index to Diseases and Injuries is arranged in alphabetic order by terms specific to a disease, condition, illness, injury, eponym, or abbreviation as well as terms that describe circumstances other than a disease or injury that may require attention from a health care professional.

Neoplasm Table

The Neoplasm Table is arranged in alphabetic order by anatomical site. Codes are then listed in individual columns based upon the histological behavior (malignant, in situ, benign, uncertain, or unspecified) of the neoplasm.

Table of Drugs and Chemicals

The Table of Drugs and Chemicals is arranged in alphabetic order by the specific drug or chemical name. Codes are listed in individual columns based upon the associated intent (poisoning, adverse effect, or underdosing). Drugs with an asterisk identify substances added to the table by Optum subject matter experts.

External Causes Index

The External Causes Index is arranged in alphabetic order by main terms that describe the cause, the intent, the place of occurrence, the activity, and the status of the patient at the time the injury occurred or health condition arose.

ICD-10-CM Index to Diseases and Injuries

A

Aarskog's syndrome Q87.19

Abandonment — see Maltreatment

Abasia (-astasia) (hysterical) F44.4

Abderhalden-Kaufmann-Lignac syndrome (cystinosis) E72.04

Abdomen, abdominal — see also condition

acute R10.0

angina K55.1

muscle deficiency syndrome Q79.4

Abdominalgia — see Pain, abdominal

Abduction contracture, hip or other joint — see Contraction, joint

Aberrant (congenital) — see also Malposition, congenital

adrenal gland Q89.1

artery (peripheral) Q27.8

basilar NEC Q28.1

cerebral Q28.3

coronary Q24.5

digestive system Q27.8

eye Q15.8

lower limb Q27.8

precerebral Q28.1

pulmonary Q25.79

renal Q27.2

retina Q14.1

specified site NEC Q27.8

subclavian Q27.8

upper limb Q27.8

vertebral Q28.1

breast Q83.8

endocrine gland NEC Q89.2

hepatic duct Q44.5

pancreas Q45.3

parathyroid gland Q89.2

pituitary gland Q89.2

sebaceous glands, mucous membrane, mouth, congenital Q38.6

spleen Q89.09

subclavian artery Q27.8

thymus (gland) Q89.2

thyroid gland Q89.2

vein (peripheral) NEC Q27.8

cerebral Q28.3

digestive system Q27.8

lower limb Q27.8

precerebral Q28.1

specified site NEC Q27.8

upper limb Q27.8

Aberration

distantal — see Disturbance, visual

mental F99

Abetalipoproteinemia E78.6

Abiotrophy R68.89

Ablatio, ablation

retinae — see Detachment, retina

Ablepharia, ablepharon Q10.3

Abnormal, abnormality, abnormalities — see also

Anomaly

acid-base balance (mixed) E87.4

albumin R77.0

alphafetoprotein R77.2

alveolar ridge K08.9

anatomical relationship Q89.9

apertures, congenital, diaphragm Q79.1

atrial septal, specified NEC Q21.19

auditory perception H93.29- ✓

diplacusis — see Diplacusis

hyperacusis — see Hyperacusis

recruitment — see Recruitment, auditory

threshold shift — see Shift, auditory threshold

autosomes Q99.9

fragile site Q95.5

basal metabolic rate R94.8

biosynthesis, testicular androgen E29.1

bleeding time R79.1

blood amino-acid level R79.83

blood level (of)

cobalt R79.0

copper R79.0

iron R79.0

Abnormal, abnormality, abnormalities — continued

blood level — continued

lithium R78.89

magnesium R79.0

mineral NEC R79.0

zinc R79.0

blood pressure

elevated R03.0

low reading (nonspecific) R03.1

blood sugar R73.09

blood-gas level R79.81

bowel sounds R19.15

absent R19.11

hyperactive R19.12

brain scan R94.02

breathing R06.9

caloric test R94.138

cerebrospinal fluid R83.9

cytology R83.6

drug level R83.2

enzyme level R83.0

hormones R83.1

immunology R83.4

microbiology R83.5

nonmedicinal level R83.3

specified type NEC R83.8

chemistry, blood R79.9

C-reactive protein R79.82

drugs — see Findings, abnormal, in blood

gas level R79.81

minerals R79.0

pancytopenia D61.818

PTT R79.1

specified NEC R79.89

toxins — see Findings, abnormal, in blood

chest sounds (friction) (rales) R09.89

chromosome, chromosomal Q99.9

with more than three X chromosomes, female Q97.1

analysis result R89.8

bronchial washings R84.8

cerebrospinal fluid R83.8

cervix uteri NEC R87.89

nasal secretions R84.8

nipple discharge R89.8

peritoneal fluid R85.89

pleural fluid R84.8

prostatic secretions R86.8

saliva R85.89

seminal fluid R86.8

sputum R84.8

synovial fluid R89.8

throat scrapings R84.8

vagina R87.89

vulva R87.89

wound secretions R89.8

dicentric replacement Q93.2

ring replacement Q93.2

sex Q99.8

female phenotype Q97.9

specified NEC Q97.8

male phenotype Q98.9

specified NEC Q98.8

structural male Q98.6

specified NEC Q99.8

clinical findings NEC R68.89

coagulation D68.9

newborn, transient P61.6

profile R79.1

time R79.1

communication — see Fistula

conjunctiva, vascular H11.41- ✓

coronary artery Q24.5

cortisol-binding globulin E27.8

course, eustachian tube Q17.8

creatinine clearance R94.4

cytology

anus R85.619

atypical squamous cells cannot exclude high grade

squamous intraepithelial lesion (ASC-H)

R85.611

atypical squamous cells of undetermined signifi-

cance (ASC-US) R85.610

cytologic evidence of malignancy R85.614

Abnormal, abnormality, abnormalities — continued

cytology — continued

anus — continued

high grade squamous intraepithelial lesion (HGSIL)

R85.613

human papillomavirus (HPV) DNA test

high risk positive R85.81

low risk positive R85.82

inadequate smear R85.615

low grade squamous intraepithelial lesion (LGSIL)

R85.612

satisfactory anal smear but lacking transformation

zone R85.616

specified NEC R85.618

unsatisfactory smear R85.615

female genital organs — see Abnormal, Papanicolaou (smear)

dark adaptation curve H53.61

dentofacial NEC — see Anomaly, dentofacial

development, developmental Q89.9

central nervous system Q07.9

diagnostic imaging

abdomen, abdominal region NEC R93.5

biliary tract R93.2

bladder R93.41

breast R92.8

central nervous system NEC R90.89

cerebrovascular NEC R90.89

coronary circulation R93.1

digestive tract NEC R93.3

gastrointestinal (tract) R93.3

genitourinary organs R93.89

head R93.0

heart R93.1

intrathoracic organ NEC R93.89

kidney R93.42- ✓

limbs R93.6

liver R93.2

lung (field) R91.8

musculoskeletal system NEC R93.7

renal pelvis R93.41

retroperitoneum R93.5

site specified NEC R93.89

skin and subcutaneous tissue R93.89

skull R93.0

testis R93.81- ✓

ureter R93.41

urinary organs specified NEC R93.49

direction, teeth, fully erupted M26.30

ear ossicles, acquired NEC H74.39- ✓

ankylosis — see Ankylosis, ear ossicles

discontinuity — see Discontinuity, ossicles, ear

partial loss — see Loss, ossicles, ear (partial)

Ebstein Q22.5

echocardiogram R93.1

echoencephalogram R90.81

echogram — see Abnormal, diagnostic imaging

electrocardiogram [ECG] [EKG] R94.31

electroencephalogram [EEG] R94.01

electrolyte — see Imbalance, electrolyte

electromyogram [EMG] R94.131

electro-oculogram [EOG] R94.110

electrophysiological intracardiac studies R94.39

electroretinogram [ERG] R94.111

erythrocytes

congenital, with perinatal jaundice D58.9

feces (color) (contents) (mucus) R19.5

finding — see Findings, abnormal, without diagnosis

fluid

amniotic — see Abnormal, specimen, specified

cerebrospinal — see Abnormal, cerebrospinal fluid

peritoneal — see Abnormal, specimen, digestive or-

gans

pleural — see Abnormal, specimen, respiratory organs

synovial — see Abnormal, specimen, specified

thorax (bronchial washings) (pleural fluid) — see Ab-

normal, specimen, respiratory organs

vaginal — see Abnormal, specimen, female genital

organs

form

teeth K00.2

uterus — see Anomaly, uterus

	Malignant Primary	Malignant Secondary	Ca in situ	Benign	Uncertain Behavior	Unspecified Behavior		Malignant Primary	Malignant Secondary	Ca in situ	Benign	Uncertain Behavior	Unspecified Behavior
Neoplasm, neoplastic — <i>continued</i>							Neoplasm, neoplastic — <i>continued</i>						
brain — <i>continued</i>							bronchus — <i>continued</i>						
basal ganglia	C71.0	C79.31	—	D33.0	D43.0	D49.6	main	C34.0-✓	C78.0-✓	D02.2-✓	D14.3-✓	D38.1	D49.1
cerebellopontine angle	C71.6	C79.31	—	D33.1	D43.1	D49.6	middle lobe of lung	C34.2	C78.0-✓	D02.21	D14.31	D38.1	D49.1
cerebellum NOS	C71.6	C79.31	—	D33.1	D43.1	D49.6	overlapping lesion	C34.8-✓	—	—	—	—	—
cerebrum	C71.0	C79.31	—	D33.0	D43.0	D49.6	upper lobe of lung	C34.1-✓	C78.0-✓	D02.2-✓	D14.3-✓	D38.1	D49.1
choroid plexus	C71.7	C79.31	—	D33.1	D43.1	D49.6	brow	C44.309	C79.2	D04.39	D23.39	D48.5	D49.2
corpus callosum	C71.8	C79.31	—	D33.2	D43.2	D49.6	basal cell carcinoma	C44.319	—	—	—	—	—
corpus striatum	C71.0	C79.31	—	D33.0	D43.0	D49.6	specified type NEC	C44.399	—	—	—	—	—
cortex (cerebral)	C71.0	C79.31	—	D33.0	D43.0	D49.6	squamous cell carcinoma	C44.329	—	—	—	—	—
frontal lobe	C71.1	C79.31	—	D33.0	D43.0	D49.6	buccal (cavity)	C06.9	C79.89	D00.00	D10.39	D37.09	D49.0
globus pallidus	C71.0	C79.31	—	D33.0	D43.0	D49.6	commissure	C06.0	C79.89	D00.02	D10.39	D37.09	D49.0
hippocampus	C71.2	C79.31	—	D33.0	D43.0	D49.6	groove (lower) (upper)	C06.1	C79.89	D00.02	D10.39	D37.09	D49.0
hypothalamus	C71.0	C79.31	—	D33.0	D43.0	D49.6	mucosa	C06.0	C79.89	D00.02	D10.39	D37.09	D49.0
internal capsule	C71.0	C79.31	—	D33.0	D43.0	D49.6	sulcus (lower) (upper)	C06.1	C79.89	D00.02	D10.39	D37.09	D49.0
medulla oblongata	C71.7	C79.31	—	D33.1	D43.1	D49.6	bulbourethral gland	C68.0	C79.19	D09.19	D30.4	D41.3	D49.59
meninges	C70.0	C79.32	—	D32.0	D42.0	D49.7	bursa — <i>see</i> Neoplasm, connective tissue	C76.3	C79.89	D04.5	D36.7	D48.7	D49.89
midbrain	C71.7	C79.31	—	D33.1	D43.1	D49.6	calif	C76.5-✓	C79.89	D04.7-✓	D36.7	D48.7	D49.89
occipital lobe	C71.4	C79.31	—	D33.0	D43.0	D49.6	calvarium	C41.0	C79.51	—	D16.4	D48.0	D49.2
overlapping lesion	C71.8	C79.31	—	—	—	—	calyx, renal canal	C65.1-✓	C79.0-✓	D09.19	D30.1-✓	D41.1-✓	D49.51-✓
parietal lobe	C71.3	C79.31	—	D33.0	D43.0	D49.6	anal	C21.1	C78.5	D01.3	D12.9	D37.8	D49.0
peduncle	C71.7	C79.31	—	D33.1	D43.1	D49.6	auditory (external) — <i>see also</i> Neoplasm, skin, ear	C44.20-✓	C79.2	D04.2-✓	D23.2-✓	D48.5	D49.2
pons	C71.7	C79.31	—	D33.1	D43.1	D49.6	auricular (external) — <i>see also</i> Neoplasm, skin, ear	C44.20-✓	C79.2	D04.2-✓	D23.2-✓	D48.5	D49.2
stem	C71.7	C79.31	—	D33.1	D43.1	D49.6	canaliculi, biliary (biliferi)	C22.1	C78.7	D01.5	D13.4	D37.6	D49.0
tapetum	C71.8	C79.31	—	D33.2	D43.2	D49.6	(intrahepatic)	C44.10-✓	C79.2	D04.1-✓	D23.1-✓	D48.5	D49.2
temporal lobe	C71.2	C79.31	—	D33.0	D43.0	D49.6	canthus (eye) (inner) (outer)	C44.11-✓	—	—	—	—	—
thalamus	C71.0	C79.31	—	D33.0	D43.0	D49.6	basal cell carcinoma	C44.13-✓	—	—	—	—	—
uncus	C71.2	C79.31	—	D33.0	D43.0	D49.6	sebaceous cell	C44.19-✓	—	—	—	—	—
ventricle (floor)	C71.5	C79.31	—	D33.0	D43.0	D49.6	specified type NEC	C44.12-✓	—	—	—	—	—
fourth	C71.7	C79.31	—	D33.1	D43.1	D49.6	squamous cell carcinoma	C44.12-✓	—	—	—	—	—
branchial (left) (cyst) (vestiges)	C10.4	C79.89	D00.08	D10.5	D37.05	D49.0	capillary — <i>see</i> Neoplasm, connective tissue	C18.0	C78.5	D01.0	D12.0	D37.4	D49.0
breast (connective tissue) (glandular tissue) (soft parts)	C50.9-✓	C79.81	D05.1-✓	D24.1-✓	D48.6-✓	D49.3	caput coli	C16.0	C78.89	D00.2	D13.1	D37.1	D49.0
areola	C50.0-✓	C79.81	D05.1-✓	D24.1-✓	D48.6-✓	D49.3	carcinoid — <i>see</i> Tumor, carcinoid	C16.0	C78.89	D00.2	D13.1	D37.1	D49.0
axillary tail	C50.6-✓	C79.81	D05.1-✓	D24.1-✓	D48.6-✓	D49.3	cardia (gastric)	C16.0	C78.89	D00.2	D13.1	D37.1	D49.0
central portion	C50.1-✓	C79.81	D05.1-✓	D24.1-✓	D48.6-✓	D49.3	cardiac orifice (stomach)	C16.0	C78.89	D00.2	D13.1	D37.1	D49.0
inner	C50.8-✓	C79.81	D05.1-✓	D24.1-✓	D48.6-✓	D49.3	cardio-esophageal junction	C16.0	C78.89	D00.2	D13.1	D37.1	D49.0
lower	C50.8-✓	C79.81	D05.1-✓	D24.1-✓	D48.6-✓	D49.3	cardio-esophagus carina (bronchus)	C34.0-✓	C78.0-✓	D02.2-✓	D14.3-✓	D38.1	D49.1
lower-inner quadrant	C50.3-✓	C79.81	D05.1-✓	D24.1-✓	D48.6-✓	D49.3	carotid (artery)	C49.0	C79.89	—	D21.0	D48.1	D49.2
lower-outer quadrant	C50.5-✓	C79.81	D05.1-✓	D24.1-✓	D48.6-✓	D49.3	body	C75.4	C79.89	—	D35.5	D44.6	D49.7
mastectomy site (skin) — <i>see also</i> Neoplasm, breast, skin	C44.501	C79.2	—	—	—	—	carpus (any bone)	C40.1-✓	C79.51	—	D16.1-✓	—	—
specified as breast tissue	C50.8-✓	C79.81	—	—	—	—	cartilage (articular) (joint) NEC — <i>see also</i> Neoplasm, bone	C41.9	C79.51	—	D16.9	D48.0	D49.2
midline	C50.8-✓	C79.81	D05.1-✓	D24.1-✓	D48.6-✓	D49.3	arytenoid	C32.3	C78.39	D02.0	D14.1	D38.0	D49.1
nipple	C50.0-✓	C79.81	D05.1-✓	D24.1-✓	D48.6-✓	D49.3	auricular	C49.0	C79.89	—	D21.0	D48.1	D49.2
outer	C50.8-✓	C79.81	D05.1-✓	D24.1-✓	D48.6-✓	D49.3	bronchi	C34.0-✓	C78.39	—	D14.3-✓	D38.1	D49.1
overlapping lesion	C50.8-✓	—	—	—	—	—	costal	C41.3	C79.51	—	D16.7	D48.0	D49.2
skin	C44.501	C79.2	D04.5	D23.5	D48.5	D49.2	cricoid	C32.3	C78.39	D02.0	D14.1	D38.0	D49.1
basal cell carcinoma	C44.511	—	—	—	—	—	cuneiform	C32.3	C78.39	D02.0	D14.1	D38.0	D49.1
specified type NEC	C44.591	—	—	—	—	—	ear (external)	C49.0	C79.89	—	D21.0	D48.1	D49.2
squamous cell carcinoma	C44.521	—	—	—	—	—	ensiform epiglottis	C41.3	C79.51	—	D16.7	D48.0	D49.2
tail (axillary)	C50.6-✓	C79.81	D05.1-✓	D24.1-✓	D48.6-✓	D49.3		C32.1	C78.39	D02.0	D14.1	D38.0	D49.1
upper	C50.8-✓	C79.81	D05.1-✓	D24.1-✓	D48.6-✓	D49.3							
upper-inner quadrant	C50.2-✓	C79.81	D05.1-✓	D24.1-✓	D48.6-✓	D49.3							
upper-outer quadrant	C50.4-✓	C79.81	D05.1-✓	D24.1-✓	D48.6-✓	D49.3							
broad ligament	C57.1-✓	C79.82	D07.39	D28.2	D39.8	D49.59							
bronchiogenic, bronchogenic (lung)	C34.9-✓	C78.0-✓	D02.2-✓	D14.3-✓	D38.1	D49.1							
bronchiole	C34.9-✓	C78.0-✓	D02.2-✓	D14.3-✓	D38.1	D49.1							
bronchus	C34.9-✓	C78.0-✓	D02.2-✓	D14.3-✓	D38.1	D49.1							
carina	C34.0-✓	C78.0-✓	D02.2-✓	D14.3-✓	D38.1	D49.1							
lower lobe of lung	C34.3-✓	C78.0-✓	D02.2-✓	D14.3-✓	D38.1	D49.1							

Substance	Poisoning, Accidental (unintentional)	Poisoning, Intentional Self-harm	Poisoning, Assault	Poisoning, Undetermined	Adverse Effect	Under-dosing	Substance	Poisoning, Accidental (unintentional)	Poisoning, Intentional Self-harm	Poisoning, Assault	Poisoning, Undetermined	Adverse Effect	Under-dosing
Androstalolone	T38.7X1	T38.7X2	T38.7X3	T38.7X4	T38.7X5	T38.7X6	Anthilimine	T37.4X1	T37.4X2	T37.4X3	T37.4X4	T37.4X5	T37.4X6
Androstanolone	T38.7X1	T38.7X2	T38.7X3	T38.7X4	T38.7X5	T38.7X6	Anthrakinone	T49.4X1	T49.4X2	T49.4X3	T49.4X4	T49.4X5	T49.4X6
Androsterone	T38.7X1	T38.7X2	T38.7X3	T38.7X4	T38.7X5	T38.7X6	Anthrax	T45.1X1	T45.1X2	T45.1X3	T45.1X4	T45.1X5	T45.1X6
Anemone pulsatilla	T62.2X1	T62.2X2	T62.2X3	T62.2X4	—	—	Antidiabetic drug NEC	T44.8X1	T44.8X2	T44.8X3	T44.8X4	T44.8X5	T44.8X6
Anesthesia							Antiallergic drug NEC	T45.0X1	T45.0X2	T45.0X3	T45.0X4	T45.0X5	T45.0X6
caudal	T41.3X1	T41.3X2	T41.3X3	T41.3X4	T41.3X5	T41.3X6	Antianxiety drug NEC	T38.6X1	T38.6X2	T38.6X3	T38.6X4	T38.6X5	T38.6X6
endotracheal	T41.0X1	T41.0X2	T41.0X3	T41.0X4	T41.0X5	T41.0X6	Anti-anemic (drug) (preparation)	T45.8X1	T45.8X2	T45.8X3	T45.8X4	T45.8X5	T45.8X6
epidural	T41.3X1	T41.3X2	T41.3X3	T41.3X4	T41.3X5	T41.3X6	Antiarthritis drug NEC	T43.501	T43.502	T43.503	T43.504	T43.505	T43.506
inhalation	T41.0X1	T41.0X2	T41.0X3	T41.0X4	T41.0X5	T41.0X6	Antiarthritis toxicaria	T65.891	T65.892	T65.893	T65.894	—	—
mucosal	T41.3X1	T41.3X2	T41.3X3	T41.3X4	T41.3X5	T41.3X6	Antiartherosclerotic drug	T46.6X1	T46.6X2	T46.6X3	T46.6X4	T46.6X5	T46.6X6
muscle relaxation	T48.1X1	T48.1X2	T48.1X3	T48.1X4	T48.1X5	T48.1X6	Antiasthmatic drug NEC	T48.6X1	T48.6X2	T48.6X3	T48.6X4	T48.6X5	T48.6X6
nerve blocking	T41.3X1	T41.3X2	T41.3X3	T41.3X4	T41.3X5	T41.3X6	Antibiotic Otic Suspension (Solution)*	T49.6X1	T49.6X2	T49.6X3	T49.6X4	T49.6X5	T49.6X6
plexus blocking	T41.3X1	T41.3X2	T41.3X3	T41.3X4	T41.3X5	T41.3X6	Antibiotic NEC	T36.91	T36.92	T36.93	T36.94	T36.95	T36.96
potentiated	T41.201	T41.202	T41.203	T41.204	T41.205	T41.206	aminoglycoside	T36.5X1	T36.5X2	T36.5X3	T36.5X4	T36.5X5	T36.5X6
rectal	T41.201	T41.202	T41.203	T41.204	T41.205	T41.206	anticancer	T45.1X1	T45.1X2	T45.1X3	T45.1X4	T45.1X5	T45.1X6
general	T41.201	T41.202	T41.203	T41.204	T41.205	T41.206	antifungal	T36.7X1	T36.7X2	T36.7X3	T36.7X4	T36.7X5	T36.7X6
local	T41.3X1	T41.3X2	T41.3X3	T41.3X4	T41.3X5	T41.3X6	antimycobacterial	T36.5X1	T36.5X2	T36.5X3	T36.5X4	T36.5X5	T36.5X6
regional	T41.3X1	T41.3X2	T41.3X3	T41.3X4	T41.3X5	T41.3X6	antineoplastic	T45.1X1	T45.1X2	T45.1X3	T45.1X4	T45.1X5	T45.1X6
surface	T41.3X1	T41.3X2	T41.3X3	T41.3X4	T41.3X5	T41.3X6	b-lactam NEC	T36.1X1	T36.1X2	T36.1X3	T36.1X4	T36.1X5	T36.1X6
Anesthetic NEC — see also	T41.41	T41.42	T41.43	T41.44	T41.45	T41.46	cephalosporin (group)	T36.1X1	T36.1X2	T36.1X3	T36.1X4	T36.1X5	T36.1X6
Anesthesia							chloramphenicol (group)	T36.2X1	T36.2X2	T36.2X3	T36.2X4	T36.2X5	T36.2X6
with muscle relaxant	T41.201	T41.202	T41.203	T41.204	T41.205	T41.206	ENT	T49.6X1	T49.6X2	T49.6X3	T49.6X4	T49.6X5	T49.6X6
general	T41.201	T41.202	T41.203	T41.204	T41.205	T41.206	eye	T49.5X1	T49.5X2	T49.5X3	T49.5X4	T49.5X5	T49.5X6
local	T41.3X1	T41.3X2	T41.3X3	T41.3X4	T41.3X5	T41.3X6	fungicidal (local)	T49.0X1	T49.0X2	T49.0X3	T49.0X4	T49.0X5	T49.0X6
gaseous NEC	T41.0X1	T41.0X2	T41.0X3	T41.0X4	T41.0X5	T41.0X6	intestinal	T36.8X1	T36.8X2	T36.8X3	T36.8X4	T36.8X5	T36.8X6
general NEC	T41.201	T41.202	T41.203	T41.204	T41.205	T41.206	local	T49.0X1	T49.0X2	T49.0X3	T49.0X4	T49.0X5	T49.0X6
halogenated hydrocarbon derivatives NEC	T41.0X1	T41.0X2	T41.0X3	T41.0X4	T41.0X5	T41.0X6	macrolides	T36.3X1	T36.3X2	T36.3X3	T36.3X4	T36.3X5	T36.3X6
infiltration NEC	T41.3X1	T41.3X2	T41.3X3	T41.3X4	T41.3X5	T41.3X6	polypeptide	T36.8X1	T36.8X2	T36.8X3	T36.8X4	T36.8X5	T36.8X6
intravenous NEC	T41.1X1	T41.1X2	T41.1X3	T41.1X4	T41.1X5	T41.1X6	specified NEC	T36.8X1	T36.8X2	T36.8X3	T36.8X4	T36.8X5	T36.8X6
local NEC	T41.3X1	T41.3X2	T41.3X3	T41.3X4	T41.3X5	T41.3X6	tetracycline (group)	T36.4X1	T36.4X2	T36.4X3	T36.4X4	T36.4X5	T36.4X6
rectal	T41.201	T41.202	T41.203	T41.204	T41.205	T41.206	throat	T49.6X1	T49.6X2	T49.6X3	T49.6X4	T49.6X5	T49.6X6
general	T41.201	T41.202	T41.203	T41.204	T41.205	T41.206	Anticancer agents NEC	T45.1X1	T45.1X2	T45.1X3	T45.1X4	T45.1X5	T45.1X6
local	T41.3X1	T41.3X2	T41.3X3	T41.3X4	T41.3X5	T41.3X6	Anticholesterolemic drug NEC	T46.6X1	T46.6X2	T46.6X3	T46.6X4	T46.6X5	T46.6X6
regional NEC	T41.3X1	T41.3X2	T41.3X3	T41.3X4	T41.3X5	T41.3X6	Anticholinergic NEC	T44.3X1	T44.3X2	T44.3X3	T44.3X4	T44.3X5	T44.3X6
thiobarbiturate	T41.1X1	T41.1X2	T41.1X3	T41.1X4	T41.1X5	T41.1X6	Anticholinesterase	T44.0X1	T44.0X2	T44.0X3	T44.0X4	T44.0X5	T44.0X6
topical	T41.3X1	T41.3X2	T41.3X3	T41.3X4	T41.3X5	T41.3X6	organophosphorus	T44.0X1	T44.0X2	T44.0X3	T44.0X4	T44.0X5	T44.0X6
Aneurine	T45.2X1	T45.2X2	T45.2X3	T45.2X4	T45.2X5	T45.2X6	insecticide	T60.0X1	T60.0X2	T60.0X3	T60.0X4	—	—
Angeliq*	T38.5X1	T38.5X2	T38.5X3	T38.5X4	T38.5X5	T38.5X6	nerve gas	T59.891	T59.892	T59.893	T59.894	—	—
Angio-Conray	T50.8X1	T50.8X2	T50.8X3	T50.8X4	T50.8X5	T50.8X6	reversible	T44.0X1	T44.0X2	T44.0X3	T44.0X4	T44.0X5	T44.0X6
Angiotensin	T44.5X1	T44.5X2	T44.5X3	T44.5X4	T44.5X5	T44.5X6	ophthalmological	T49.5X1	T49.5X2	T49.5X3	T49.5X4	T49.5X5	T49.5X6
Angiotensinamide	T44.991	T44.992	T44.993	T44.994	T44.995	T44.996	Anticoagulant NEC	T45.511	T45.512	T45.513	T45.514	T45.515	T45.516
Anhydrohydroxy-progesterone	T38.5X1	T38.5X2	T38.5X3	T38.5X4	T38.5X5	T38.5X6	Antagonist	T45.7X1	T45.7X2	T45.7X3	T45.7X4	T45.7X5	T45.7X6
Anhydron	T50.2X1	T50.2X2	T50.2X3	T50.2X4	T50.2X5	T50.2X6	Anti-common-cold drug NEC	T48.5X1	T48.5X2	T48.5X3	T48.5X4	T48.5X5	T48.5X6
Anilidine	T40.491	T40.492	T40.493	T40.494	T40.495	T40.496	Anticonvulsant	T42.71	T42.72	T42.73	T42.74	T42.75	T42.76
Aniline (dye) (liquid)	T65.3X1	T65.3X2	T65.3X3	T65.3X4	—	—	barbiturate	T42.3X1	T42.3X2	T42.3X3	T42.3X4	T42.3X5	T42.3X6
analgesic	T39.1X1	T39.1X2	T39.1X3	T39.1X4	T39.1X5	T39.1X6	combination (with barbiturate)	T42.3X1	T42.3X2	T42.3X3	T42.3X4	T42.3X5	T42.3X6
derivatives, therapeutic	T39.1X1	T39.1X2	T39.1X3	T39.1X4	T39.1X5	T39.1X6	hydantoin	T42.0X1	T42.0X2	T42.0X3	T42.0X4	T42.0X5	T42.0X6
NEC	T65.3X1	T65.3X2	T65.3X3	T65.3X4	—	—	hypnotic NEC	T42.6X1	T42.6X2	T42.6X3	T42.6X4	T42.6X5	T42.6X6
vapor	T44.3X1	T44.3X2	T44.3X3	T44.3X4	T44.3X5	T44.3X6	oxazolindione	T42.2X1	T42.2X2	T42.2X3	T42.2X4	T42.2X5	T42.2X6
Anisocorpine	T47.5X1	T47.5X2	T47.5X3	T47.5X4	T47.5X5	T47.5X6	pyrimidinone	T42.6X1	T42.6X2	T42.6X3	T42.6X4	T42.6X5	T42.6X6
Anise oil	T65.3X1	T65.3X2	T65.3X3	T65.3X4	—	—	specified NEC	T42.6X1	T42.6X2	T42.6X3	T42.6X4	T42.6X5	T42.6X6
Anisidine	T45.511	T45.512	T45.513	T45.514	T45.515	T45.516	succinimide	T42.2X1	T42.2X2	T42.2X3	T42.2X4	T42.2X5	T42.2X6
Anisindione	T44.3X1	T44.3X2	T44.3X3	T44.3X4	T44.3X5	T44.3X6	Antidepressant	T43.201	T43.202	T43.203	T43.204	T43.205	T43.206
Anisotropine methyl-bromide	T45.611	T45.612	T45.613	T45.614	T45.615	T45.616	monoamine oxidase inhibitor	T43.1X1	T43.1X2	T43.1X3	T43.1X4	T43.1X5	T43.1X6
Anistreplase	T50.5X1	T50.5X2	T50.5X3	T50.5X4	T50.5X5	T50.5X6	selective serotonin reuptake inhibitor	T43.211	T43.212	T43.213	T43.214	T43.215	T43.216
Anorexiant (central)	T50.5X1	T50.5X2	T50.5X3	T50.5X4	T50.5X5	T50.5X6	norepinephrine reuptake inhibitor	T43.221	T43.222	T43.223	T43.224	T43.225	T43.226
Anorexic agents	T39.311	T39.312	T39.313	T39.314	T39.315	T39.316	selective serotonin reuptake inhibitor	T43.221	T43.222	T43.223	T43.224	T43.225	T43.226
Ansaid*	T36.6X1	T36.6X2	T36.6X3	T36.6X4	T36.6X5	T36.6X6	specified NEC	T43.291	T43.292	T43.293	T43.294	T43.295	T43.296
Ansamycin	T63.421	T63.422	T63.423	T63.424	—	—	tetracyclic	T43.021	T43.022	T43.023	T43.024	T43.025	T43.026
Ant (bite) (sting)	T50.6X1	T50.6X2	T50.6X3	T50.6X4	T50.6X5	T50.6X6	triazolopyridine	T43.211	T43.212	T43.213	T43.214	T43.215	T43.216
Antabuse	T47.1X1	T47.1X2	T47.1X3	T47.1X4	T47.1X5	T47.1X6	tricyclic	T43.011	T43.012	T43.013	T43.014	T43.015	T43.016
Antacid NEC							Antidiabetic NEC	T38.3X1	T38.3X2	T38.3X3	T38.3X4	T38.3X5	T38.3X6
Antagonist							biguanide	T38.3X1	T38.3X2	T38.3X3	T38.3X4	T38.3X5	T38.3X6
Aldosterone	T50.0X1	T50.0X2	T50.0X3	T50.0X4	T50.0X5	T50.0X6	and sulfonyl combined	T38.3X1	T38.3X2	T38.3X3	T38.3X4	T38.3X5	T38.3X6
alpha-adrenoreceptor	T44.6X1	T44.6X2	T44.6X3	T44.6X4	T44.6X5	T44.6X6	combined	T38.3X1	T38.3X2	T38.3X3	T38.3X4	T38.3X5	T38.3X6
anticoagulant	T45.7X1	T45.7X2	T45.7X3	T45.7X4	T45.7X5	T45.7X6	sulfonylurea	T38.3X1	T38.3X2	T38.3X3	T38.3X4	T38.3X5	T38.3X6
beta-adrenoreceptor	T44.7X1	T44.7X2	T44.7X3	T44.7X4	T44.7X5	T44.7X6	Antidiarrheal drug NEC	T47.6X1	T47.6X2	T47.6X3	T47.6X4	T47.6X5	T47.6X6
extrapyramidal NEC	T44.3X1	T44.3X2	T44.3X3	T44.3X4	T44.3X5	T44.3X6	absorbent	T47.6X1	T47.6X2	T47.6X3	T47.6X4	T47.6X5	T47.6X6
folic acid	T45.1X1	T45.1X2	T45.1X3	T45.1X4	T45.1X5	T45.1X6	Anti-D immunoglobulin (human)	T50.211	T50.212	T50.213	T50.214	T50.215	T50.216
H2 receptor	T47.0X1	T47.0X2	T47.0X3	T47.0X4	T47.0X5	T47.0X6	Antidiphtheria serum	T50.211	T50.212	T50.213	T50.214	T50.215	T50.216
heavy metal	T45.8X1	T45.8X2	T45.8X3	T45.8X4	T45.8X5	T45.8X6	Antidiuretic hormone	T38.891	T38.892	T38.893	T38.894	T38.895	T38.896
narcotic analgesic	T50.7X1	T50.7X2	T50.7X3	T50.7X4	T50.7X5	T50.7X6	Antidote NEC	T50.6X1	T50.6X2	T50.6X3	T50.6X4	T50.6X5	T50.6X6
opiate	T50.7X1	T50.7X2	T50.7X3	T50.7X4	T50.7X5	T50.7X6	heavy metal	T45.8X1	T45.8X2	T45.8X3	T45.8X4	T45.8X5	T45.8X6
pyrimidine	T45.1X1	T45.1X2	T45.1X3	T45.1X4	T45.1X5	T45.1X6	Antidysrhythmic NEC	T46.2X1	T46.2X2	T46.2X3	T46.2X4	T46.2X5	T46.2X6
serotonin	T46.5X1	T46.5X2	T46.5X3	T46.5X4	T46.5X5	T46.5X6							
Antazolol (e)	T45.0X1	T45.0X2	T45.0X3	T45.0X4	T45.0X5	T45.0X6							
Anterior pituitary hormone NEC	T38.811	T38.812	T38.813	T38.814	T38.815	T38.816							
Anthelmintic NEC	T37.4X1	T37.4X2	T37.4X3	T37.4X4	T37.4X5	T37.4X6							

ICD-10-CM Tabular List of Diseases and Injuries

Chapter 1. Certain Infectious and Parasitic Diseases (A00–B99), U07.1, U09.9

Chapter-specific Guidelines with Coding Examples

The chapter-specific guidelines from the ICD-10-CM Official Guidelines for Coding and Reporting have been provided below. Along with these guidelines are coding examples, contained in the shaded boxes, that have been developed to help illustrate the coding and/or sequencing guidance found in these guidelines.

a. Human immunodeficiency virus (HIV) infections

1) Code only confirmed cases

Code only confirmed cases of HIV infection/illness. This is an exception to the hospital inpatient guideline Section II, H.

In this context, “confirmation” does not require documentation of positive serology or culture for HIV; the provider’s diagnostic statement that the patient is HIV positive or has an HIV-related illness is sufficient.

Patient being seen for hypothyroidism with possible HIV infection

E03.9 Hypothyroidism, unspecified

Explanation: Only the hypothyroidism is coded in this scenario because it has not been confirmed that an HIV infection is present.

2) Selection and sequencing of HIV codes

(a) Patient admitted for HIV-related condition

If a patient is admitted for an HIV-related condition, the principal diagnosis should be B20, Human immunodeficiency virus [HIV] disease followed by additional diagnosis codes for all reported HIV-related conditions.

An exception to this guideline is if the reason for admission is hemolytic-uremic syndrome associated with HIV disease. Assign code D59.31, Infection-associated hemolytic-uremic syndrome, followed by code B20, Human immunodeficiency virus [HIV] disease.

HIV with CMV

B20 Human immunodeficiency virus [HIV] disease

B25.9 Cytomegaloviral disease, unspecified

Explanation: Cytomegaloviral infection is an HIV related condition, so the HIV diagnosis code is reported first, followed by the code for the CMV.

(b) Patient with HIV disease admitted for unrelated condition

If a patient with HIV disease is admitted for an unrelated condition (such as a traumatic injury), the code for the unrelated condition (e.g., the nature of injury code) should be the principal diagnosis. Other diagnoses would be B20 followed by additional diagnosis codes for all reported HIV-related conditions.

Sprain of the internal collateral ligament, right ankle; HIV

S93.491A Sprain of other ligament of right ankle, initial encounter

B20 Human immunodeficiency virus [HIV] disease

Explanation: The ankle sprain is not related to HIV, so it is the first-listed diagnosis code, and HIV is reported secondarily.

(c) Whether the patient is newly diagnosed

Whether the patient is newly diagnosed or has had previous admissions/encounters for HIV conditions is irrelevant to the sequencing decision.

Newly diagnosed multiple cutaneous Kaposi’s sarcoma lesions in previously diagnosed HIV disease

B20 Human immunodeficiency virus [HIV] disease

C46.0 Kaposi’s sarcoma of skin

Explanation: Even though the HIV was diagnosed on a previous encounter, it is still sequenced first when coded with an HIV-related condition. Kaposi’s sarcoma is an HIV-related condition.

(d) Asymptomatic human immunodeficiency virus

Z21, Asymptomatic human immunodeficiency virus [HIV] infection status, is to be applied when the patient without any documentation of symptoms is listed as being “HIV positive,” “known HIV,” “HIV test positive,” or similar terminology. Do not use this code if the term “AIDS” or “HIV disease” is used or if the patient is treated for any

HIV-related illness or is described as having any condition(s) resulting from his/her HIV positive status; use B20 in these cases.

(e) Patients with inconclusive HIV serology

Patients with inconclusive HIV serology, but no definitive diagnosis or manifestations of the illness, may be assigned code R75, Inconclusive laboratory evidence of human immunodeficiency virus [HIV].

(f) Previously diagnosed HIV-related illness

Patients with any known prior diagnosis of an HIV-related illness should be coded to B20. Once a patient has developed an HIV-related illness, the patient should always be assigned code B20 on every subsequent admission/encounter. Patients previously diagnosed with any HIV illness (B20) should never be assigned to R75 or Z21, Asymptomatic human immunodeficiency virus [HIV] infection status.

(g) HIV infection in pregnancy, childbirth and the puerperium

During pregnancy, childbirth or the puerperium, a patient admitted (or presenting for a health care encounter) because of an HIV-related illness should receive a principal diagnosis code of O98.7-, Human immunodeficiency [HIV] disease complicating pregnancy, childbirth and the puerperium, followed by B20 and the code(s) for the HIV-related illness(es). Codes from Chapter 15 always take sequencing priority.

Patients with asymptomatic HIV infection status admitted (or presenting for a health care encounter) during pregnancy, childbirth, or the puerperium should receive codes of O98.7- and Z21.

(h) Encounters for testing for HIV

If a patient is being seen to determine his/her HIV status, use code Z11.4, Encounter for screening for human immunodeficiency virus [HIV]. Use additional codes for any associated high-risk behavior, if applicable.

If a patient with signs or symptoms is being seen for HIV testing, code the signs and symptoms. An additional counseling code Z71.7, Human immunodeficiency virus [HIV] counseling, may be used if counseling is provided during the encounter for the test.

When a patient returns to be informed of his/her HIV test results and the test result is negative, use code Z71.7, Human immunodeficiency virus [HIV] counseling.

If the results are positive, see previous guidelines and assign codes as appropriate.

(i) HIV managed by antiretroviral medication

If a patient with documented HIV disease, HIV-related illness or AIDS is currently managed on antiretroviral medications, assign code B20, Human immunodeficiency virus [HIV] disease. Code Z79.899, Other long term (current) drug therapy, may be assigned as an additional code to identify the long-term (current) use of antiretroviral medications.

(j) Encounter for HIV Prophylaxis Measure

When a patient is seen for administration of pre-exposure prophylaxis medication for HIV, assign code Z29.81, Encounter for HIV pre-exposure prophylaxis. Pre-exposure prophylaxis (PrEP) is intended to prevent infection in people who are at risk for getting HIV through sex or injection drug use. Any risk factors for HIV should also be coded.

b. Infectious agents as the cause of diseases classified to other chapters

Certain infections are classified in chapters other than Chapter 1 and no organism is identified as part of the infection code. In these instances, it is necessary to use an additional code from Chapter 1 to identify the organism. A code from category B95, Streptococcus, Staphylococcus, and Enterococcus as the cause of diseases classified to other chapters, B96, Other bacterial agents as the cause of diseases classified to other chapters, or B97, Viral agents as the cause of diseases classified to other chapters, is to be used as an additional code to identify the organism. An instructional note will be found at the infection code advising that an additional organism code is required.

Acute *E. coli* cystitis

N30.00 Acute cystitis without hematuria

B96.20 Unspecified Escherichia coli [E.coli] as the cause of diseases classified elsewhere

Explanation: An instructional note under the category for the cystitis indicates to code also the specific organism.

F16.921 Hallucinogen use, unspecified with intoxication with **delirium** HCC ESR COM
Other hallucinogen intoxication delirium

F16.929 Hallucinogen use, unspecified with intoxication, unspecified HCC ESR COM

F16.94 Hallucinogen use, unspecified with hallucinogen-induced **mood disorder** HCC ESR COM
Other hallucinogen induced bipolar or related disorder, without use disorder
Other hallucinogen induced depressive disorder, without use disorder
Phencyclidine induced bipolar or related disorder, without use disorder
Phencyclidine induced depressive disorder, without use disorder

✓ 6th **F16.95** Hallucinogen use, unspecified with hallucinogen-induced **psychotic disorder**

F16.950 Hallucinogen use, unspecified with hallucinogen-induced psychotic disorder with **delusions** HCC ESR COM

F16.951 Hallucinogen use, unspecified with hallucinogen-induced psychotic disorder with **hallucinations** HCC ESR COM

F16.959 Hallucinogen use, unspecified with hallucinogen-induced psychotic disorder, unspecified HCC ESR COM
Other hallucinogen induced psychotic disorder, without use disorder
Phencyclidine induced psychotic disorder, without use disorder

✓ 6th **F16.98** Hallucinogen use, unspecified with other specified hallucinogen-induced disorder

F16.980 Hallucinogen use, unspecified with hallucinogen-induced **anxiety disorder** HCC ESR COM
Other hallucinogen-induced anxiety disorder, without use disorder
Phencyclidine induced anxiety disorder, without use disorder

F16.983 Hallucinogen use, unspecified with hallucinogen **persisting perception disorder (flashbacks)** HCC ESR COM

F16.988 Hallucinogen use, unspecified with other hallucinogen-induced disorder HCC ESR COM

F16.99 Hallucinogen use, unspecified with unspecified hallucinogen-induced disorder HCC ESR COM

✓ 4th **F17 Nicotine dependence**

EXCLUDES 1 history of tobacco dependence (Z87.891)
tobacco use NOS (Z72.0)

EXCLUDES 2 tobacco use (smoking) during pregnancy, childbirth and the puerperium (O99.33-)
toxic effect of nicotine (T65.2-)

AHA: 2013, 4Q, 108-109

✓ 5th **F17.2 Nicotine dependence**

✓ 6th **F17.20** Nicotine dependence, unspecified

F17.200 Nicotine dependence, unspecified, uncomplicated

Tobacco use disorder, mild
Tobacco use disorder, moderate
Tobacco use disorder, severe

AHA: 2016, 1Q, 36

TIP: Assign when provider documentation indicates "smoker" without further specification.

F17.201 Nicotine dependence, unspecified, in remission

Tobacco use disorder, mild, in early remission
Tobacco use disorder, mild, in sustained remission
Tobacco use disorder, moderate, in early remission
Tobacco use disorder, moderate, in sustained remission
Tobacco use disorder, severe, in early remission
Tobacco use disorder, severe, in sustained remission

F17.203 Nicotine dependence unspecified, with **withdrawal**

Tobacco withdrawal

F17.208 Nicotine dependence, unspecified, with other nicotine-induced disorders

F17.209 Nicotine dependence, unspecified, with unspecified nicotine-induced disorders

✓ 6th **F17.21** Nicotine dependence, **cigarettes**

F17.210 Nicotine dependence, cigarettes, uncomplicated

AHA: 2017, 2Q, 28-29

F17.211 Nicotine dependence, cigarettes, in remission

Tobacco use disorder, cigarettes, mild, in early remission
Tobacco use disorder, cigarettes, mild, in sustained remission
Tobacco use disorder, cigarettes, moderate, in early remission
Tobacco use disorder, cigarettes, moderate, in sustained remission
Tobacco use disorder, cigarettes, severe, in early remission
Tobacco use disorder, cigarettes, severe, in sustained remission

F17.213 Nicotine dependence, cigarettes, with **withdrawal**

F17.218 Nicotine dependence, cigarettes, with other nicotine-induced disorders

F17.219 Nicotine dependence, cigarettes, with unspecified nicotine-induced disorders

✓ 6th **F17.22** Nicotine dependence, **chewing tobacco**

F17.220 Nicotine dependence, chewing tobacco, uncomplicated

F17.221 Nicotine dependence, chewing tobacco, in remission

Tobacco use disorder, chewing tobacco, mild, in early remission
Tobacco use disorder, chewing tobacco, mild, in sustained remission
Tobacco use disorder, chewing tobacco, moderate, in early remission
Tobacco use disorder, chewing tobacco, moderate, in sustained remission
Tobacco use disorder, chewing tobacco, severe, in early remission
Tobacco use disorder, chewing tobacco, severe, in sustained remission

F17.223 Nicotine dependence, chewing tobacco, with **withdrawal**

F17.228 Nicotine dependence, chewing tobacco, with other nicotine-induced disorders

F17.229 Nicotine dependence, chewing tobacco, with unspecified nicotine-induced disorders

✓ 6th **F17.29** Nicotine dependence, other tobacco product

F17.290 Nicotine dependence, other tobacco product, uncomplicated

AHA: 2017, 2Q, 28-29

F17.291 Nicotine dependence, other tobacco product, in remission

Tobacco use disorder, other tobacco product, mild, in early remission
Tobacco use disorder, other tobacco product, mild, in sustained remission
Tobacco use disorder, other tobacco product, moderate, in early remission
Tobacco use disorder, other tobacco product, moderate, in sustained remission
Tobacco use disorder, other tobacco product, severe, in early remission
Tobacco use disorder, other tobacco product, severe, in sustained remission

F17.293 Nicotine dependence, other tobacco product, with **withdrawal**

F17.298 Nicotine dependence, other tobacco product, with other nicotine-induced disorders

F17.299 Nicotine dependence, other tobacco product, with unspecified nicotine-induced disorders

I22.8 Subsequent ST elevation (STEMI) myocardial infarction of other sites HCC Rx ESR COM

Subsequent acute transmural myocardial infarction of other sites
 Subsequent apical-lateral transmural (Q wave) myocardial infarction (acute)
 Subsequent basal-lateral transmural (Q wave) myocardial infarction (acute)
 Subsequent high lateral transmural (Q wave) myocardial infarction (acute)
 Subsequent posterior (true) transmural (Q wave) myocardial infarction (acute)
 Subsequent posterobasal transmural (Q wave) myocardial infarction (acute)
 Subsequent posterolateral transmural (Q wave) myocardial infarction (acute)
 Subsequent posteroseptal transmural (Q wave) myocardial infarction (acute)
 Subsequent septal NOS transmural (Q wave) myocardial infarction (acute)
 Subsequent transmural (Q wave) myocardial infarction (acute)(of lateral (wall) NOS

I22.9 Subsequent ST elevation (STEMI) myocardial infarction of unspecified site HCC Rx ESR COM

Subsequent acute myocardial infarction of unspecified site
 Subsequent myocardial infarction (acute) NOS

I23 Certain current complications following ST elevation (STEMI) and non-ST elevation (NSTEMI) myocardial infarction (within the 28 day period)

AHA: 2017,2Q,11

DEF: ST elevation myocardial infarction: Complete obstruction of one or more coronary arteries causing decreased blood flow (ischemia) and necrosis of myocardial muscle cells.

DEF: Non-ST elevation myocardial infarction: Partial obstruction of one or more coronary arteries that causes decreased blood flow (ischemia) and may cause partial thickness necrosis of myocardial muscle cells.

I23.0 Hemopericardium as current complication following acute myocardial infarction HCC Rx ESR COM A

EXCLUDES 1 hemopericardium not specified as current complication following acute myocardial infarction (I31.2)

I23.1 Atrial septal defect as current complication following acute myocardial infarction HCC Rx ESR COM A

EXCLUDES 1 acquired atrial septal defect not specified as current complication following acute myocardial infarction (I51.0)

I23.2 Ventricular septal defect as current complication following acute myocardial infarction HCC Rx ESR COM A

EXCLUDES 1 acquired ventricular septal defect not specified as current complication following acute myocardial infarction (I51.0)

I23.3 Rupture of cardiac wall without hemopericardium as current complication following acute myocardial infarction HCC Rx ESR COM A**I23.4 Rupture of chordae tendineae as current complication following acute myocardial infarction** HCC Rx ESR COM

EXCLUDES 1 rupture of chordae tendineae not specified as current complication following acute myocardial infarction (I51.1)

I23.5 Rupture of papillary muscle as current complication following acute myocardial infarction HCC Rx ESR COM

EXCLUDES 1 rupture of papillary muscle not specified as current complication following acute myocardial infarction (I51.2)

I23.6 Thrombosis of atrium, auricular appendage, and ventricle as current complications following acute myocardial infarction HCC Rx ESR COM A

EXCLUDES 1 thrombosis of atrium, auricular appendage, and ventricle not specified as current complication following acute myocardial infarction (I51.3)

I23.7 Postinfarction angina HCC Rx ESR COM A

AHA: 2015,2Q,16

TIP: When postinfarction angina occurs with atherosclerotic coronary artery disease, code both I23.7 and I25.118 for atherosclerotic disease with other forms of angina pectoris.

I23.8 Other current complications following acute myocardial infarction HCC Rx ESR COM A**I24 Other acute ischemic heart diseases**

EXCLUDES 1 angina pectoris (I20.-)
 transient myocardial ischemia in newborn (P29.4)
 EXCLUDES 2 non-ischemic myocardial injury (I5A)

I24.0 Acute coronary thrombosis not resulting in myocardial infarction HCC Rx ESR COM

Acute coronary (artery) (vein) embolism not resulting in myocardial infarction
 Acute coronary (artery) (vein) occlusion not resulting in myocardial infarction
 Acute coronary (artery) (vein) thromboembolism not resulting in myocardial infarction

EXCLUDES 1 atherosclerotic heart disease (I25.1-)

AHA: 2013,1Q,24

I24.1 Dressler's syndrome HCC Rx ESR COM

Postmyocardial infarction syndrome

EXCLUDES 1 postinfarction angina (I23.7)

DEF: Fever, leukocytosis, chest pain, evidence of pericarditis, pleurisy, and pneumonia occurring days or weeks after a myocardial infarction.

I24.8 Other forms of acute ischemic heart disease

EXCLUDES 1 myocardial infarction due to demand ischemia (I21.A1)

AHA: 2023,4Q,25-26; 2019,4Q,53; 2017,4Q,13

I24.81 Acute coronary microvascular dysfunction HCC Rx ESR COM

Acute (presentation of) coronary microvascular disease

I24.89 Other forms of acute ischemic heart disease HCC Rx ESR COM**I24.9 Acute ischemic heart disease, unspecified** HCC Rx ESR COM

EXCLUDES 1 ischemic heart disease (chronic) NOS (I25.9)

I25 Chronic ischemic heart disease

Use additional code to identify:

chronic total occlusion of coronary artery (I25.82)

exposure to environmental tobacco smoke (Z77.22)

history of tobacco dependence (Z87.891)

occupational exposure to environmental tobacco smoke (Z57.31)

tobacco dependence (F17.-)

tobacco use (Z72.0)

EXCLUDES 2 non-ischemic myocardial injury (I5A)

AHA: 2022,4Q,20-21

I25.1 Atherosclerotic heart disease of native coronary artery

Atherosclerotic cardiovascular disease

Coronary (artery) atheroma

Coronary (artery) atherosclerosis

Coronary (artery) disease

Coronary (artery) sclerosis

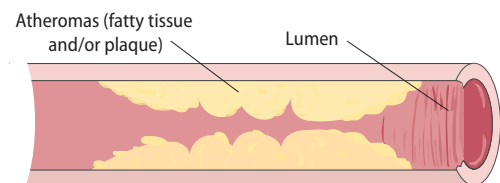
Use additional code, if applicable, to identify:

coronary atherosclerosis due to calcified coronary lesion (I25.84)

coronary atherosclerosis due to lipid rich plaque (I25.83)

EXCLUDES 2 atheroembolism (I75.-)

atherosclerosis of coronary artery bypass graft(s) and transplanted heart (I25.7-)

Atheromas**I25.10 Atherosclerotic heart disease of native coronary artery without angina pectoris** Rx A

Atherosclerotic heart disease NOS

AHA: 2024,1Q,28; 2021,3Q,6-7; 2015,2Q,16; 2012,4Q,92

I25.11 Atherosclerotic heart disease of native coronary artery with angina pectoris HCC Rx ESR COM A

AHA: 2024,1Q,28

I25.110 Atherosclerotic heart disease of native coronary artery with unstable angina pectoris HCC Rx ESR COM A

EXCLUDES 1 unstable angina without atherosclerotic heart disease (I20.0)

Muscle/Tendon Table

ICD-10-CM categorizes certain muscles and tendons in the upper and lower extremities by their action (e.g., extension, flexion), their anatomical location (e.g., posterior, anterior), and/or whether they are intrinsic or extrinsic to a certain anatomical area. The Muscle/Tendon Table is provided at the beginning of chapters 13 and 19 as a resource to help users when code selection depends on one or more of these characteristics. A **TIP** has been placed at those categories and/or subcategories that relate to this table. Please note that this table is not all-inclusive, and proper code assignment should be based on the provider's documentation.

Body Region	Muscle	Extensor Tendon	Flexor Tendon	Other Tendon
Shoulder				
	Deltoid	Posterior deltoid	Anterior deltoid	
	Rotator cuff			
	Infraspinatus			Infraspinatus
	Subscapularis			Subscapularis
	Supraspinatus			Supraspinatus
	Teres minor			Teres minor
	Teres major	Teres major		
Upper arm				
	Anterior muscles			
	Biceps brachii — long head		Biceps brachii — long head	
	Biceps brachii — short head		Biceps brachii — short head	
	Brachialis		Brachialis	
	Coracobrachialis		Coracobrachialis	
	Posterior muscles			
	Triceps brachii	Triceps brachii		
Forearm				
	Anterior muscles			
	Flexors			
	Deep			
	Flexor digitorum profundus		Flexor digitorum profundus	
	Flexor pollicis longus		Flexor pollicis longus	
	Intermediate			
	Flexor digitorum superficialis		Flexor digitorum superficialis	
	Superficial			
	Flexor carpi radialis		Flexor carpi radialis	
	Flexor carpi ulnaris		Flexor carpi ulnaris	
	Palmaris longus		Palmaris longus	
	Pronators			
	Pronator quadratus			Pronator quadratus
	Pronator teres			Pronator teres
	Posterior muscles			
	Extensors			
	Deep			
	Abductor pollicis longus			Abductor pollicis longus
	Extensor indicis	Extensor indicis		
	Extensor pollicis brevis	Extensor pollicis brevis		
	Extensor pollicis longus	Extensor pollicis longus		
	Superficial			
	Brachioradialis			Brachioradialis
	Extensor carpi radialis brevis	Extensor carpi radialis brevis		
	Extensor carpi radialis longus	Extensor carpi radialis longus		
	Extensor carpi ulnaris	Extensor carpi ulnaris		
	Extensor digiti minimi	Extensor digiti minimi		
	Extensor digitorum	Extensor digitorum		
	Anconeus	Anconeus		
	Supinator			Supinator

Chapter 21. Factors Influencing Health Status and Contact With Health Services (Z00-Z99)

NOTE

Z codes represent reasons for encounters. A corresponding procedure code must accompany a Z code if a procedure is performed. Categories Z00-Z99 are provided for occasions when circumstances other than a disease, injury or external cause classifiable to categories A00-Y89 are recorded as "diagnoses" or "problems." This can arise in two main ways:

(a) When a person who may or may not be sick encounters the health services for some specific purpose, such as to receive limited care or service for a current condition, to donate an organ or tissue, to receive prophylactic vaccination (immunization), or to discuss a problem which is in itself not a disease or injury.

(b) When some circumstance or problem is present which influences the person's health status but is not in itself a current illness or injury.

AHA: 2018,4Q,60-61

This chapter contains the following blocks:

- Z00-Z13 Persons encountering health services for examinations
- Z14-Z15 Genetic carrier and genetic susceptibility to disease
- Z16 Resistance to antimicrobial drugs
- Z17 ▶ Estrogen, and other hormones and factors receptor status ◀
- Z18 Retained foreign body fragments
- Z19 Hormone sensitivity malignancy status
- Z20-Z29 Persons with potential health hazards related to communicable diseases
- Z30-Z39 Persons encountering health services in circumstances related to reproduction
- Z40-Z53 Encounters for other specific health care
- Z55-Z65 Persons with potential health hazards related to socioeconomic and psychosocial circumstances
- Z66 Do not resuscitate status
- Z67 Blood type
- Z68 Body mass index (BMI)
- Z69-Z76 Persons encountering health services in other circumstances
- Z77-Z99 Persons with potential health hazards related to family and personal history and certain conditions influencing health status

Persons encountering health services for examinations (Z00-Z13)

NOTE

Nonspecific abnormal findings disclosed at the time of these examinations are classified to categories R70-R94.

EXCLUDES 1 examinations related to pregnancy and reproduction (Z30-Z36, Z39.-)

✓ 4th **Z00 Encounter for general examination without complaint, suspected or reported diagnosis**

EXCLUDES 1 encounter for examination for administrative purposes (Z02.-)

EXCLUDES 2 encounter for pre-procedural examinations (Z01.81-) special screening examinations (Z11-Z13)

AHA: 2017,4Q,95

✓ 5th **Z00.0 Encounter for general adult medical examination**

Encounter for adult periodic examination (annual) (physical) and any associated laboratory and radiologic examinations

EXCLUDES 1 encounter for examination of sign or symptom - code to sign or symptom
general health check-up of infant or child (Z00.12.-)

Z00.00 Encounter for general adult medical examination without abnormal findings PDX A

Encounter for adult health check-up NOS

AHA: 2016,1Q,36

Z00.01 Encounter for general adult medical examination with abnormal findings PDX A

Use additional code to identify abnormal findings

AHA: 2016,1Q,35-36

✓ 5th **Z00.1 Encounter for newborn, infant and child health examinations**

✓ 6th **Z00.11 Newborn health examination**

Health check for child under 29 days old

Use additional code to identify any abnormal findings

EXCLUDES 1 health check for child over 28 days old (Z00.12.-)

Z00.110 Health examination for newborn under 8 days old PDX N

Health check for newborn under 8 days old

Z00.111 Health examination for newborn 8 to 28 days old PDX N

Health check for newborn 8 to 28 days old

Newborn weight check

✓ 6th **Z00.12 Encounter for routine child health examination**

Health check (routine) for child over 28 days old
Immunizations appropriate for age
Routine developmental screening of infant or child
Routine vision and hearing testing

EXCLUDES 1 health check for child under 29 days old (Z00.11.-)

health supervision of foundling or other

healthy infant or child (Z76.1-Z76.2)

newborn health examination (Z00.11.-)

AHA: 2018,4Q,36

Z00.121 Encounter for routine child health examination with abnormal findings PDX P

Use additional code to identify abnormal findings

AHA: 2016,1Q,34-35

Z00.129 Encounter for routine child health examination without abnormal findings PDX P

Encounter for routine child health examination NOS

AHA: 2016,1Q,34

Z00.2 Encounter for examination for period of rapid growth in childhood PDX P

Z00.3 Encounter for examination for adolescent development state PDX P

Encounter for puberty development state

Z00.5 Encounter for examination of potential donor of organ and tissue PDX

Z00.6 Encounter for examination for normal comparison and control in clinical research program

Examination of participant or control in clinical research program

✓ 5th **Z00.7 Encounter for examination for period of delayed growth in childhood**

Z00.70 Encounter for examination for period of delayed growth in childhood without abnormal findings PDX P

Z00.71 Encounter for examination for period of delayed growth in childhood with abnormal findings PDX P

Use additional code to identify abnormal findings

Z00.8 Encounter for other general examination PDX

Encounter for health examination in population surveys

✓ 4th **Z01 Encounter for other special examination without complaint, suspected or reported diagnosis**

INCLUDES routine examination of specific system

NOTE Codes from category Z01 represent the reason for the encounter. A separate procedure code is required to identify any examinations or procedures performed

EXCLUDES 1 encounter for examination for administrative purposes (Z02.-)
encounter for examination for suspected conditions, proven not to exist (Z03.-)

encounter for laboratory and radiologic examinations as a component of general medical examinations (Z00.0-)
encounter for laboratory, radiologic and imaging examinations for sign(s) and symptom(s) - code to the sign(s) or symptom(s)

EXCLUDES 2 screening examinations (Z11-Z13)

✓ 5th **Z01.0 Encounter for examination of eyes and vision**

EXCLUDES 1 examination for driving license (Z02.4)

Z01.00 Encounter for examination of eyes and vision without abnormal findings PDX

Encounter for examination of eyes and vision NOS

Z01.01 Encounter for examination of eyes and vision with abnormal findings PDX

Use additional code to identify abnormal findings

AHA: 2016,4Q,21

✓ 6th **Z01.02 Encounter for examination of eyes and vision following failed vision screening**

EXCLUDES 1 encounter for examination of eyes and vision with abnormal findings (Z01.01)
encounter for examination of eyes and vision without abnormal findings (Z01.00)

AHA: 2019,4Q,20

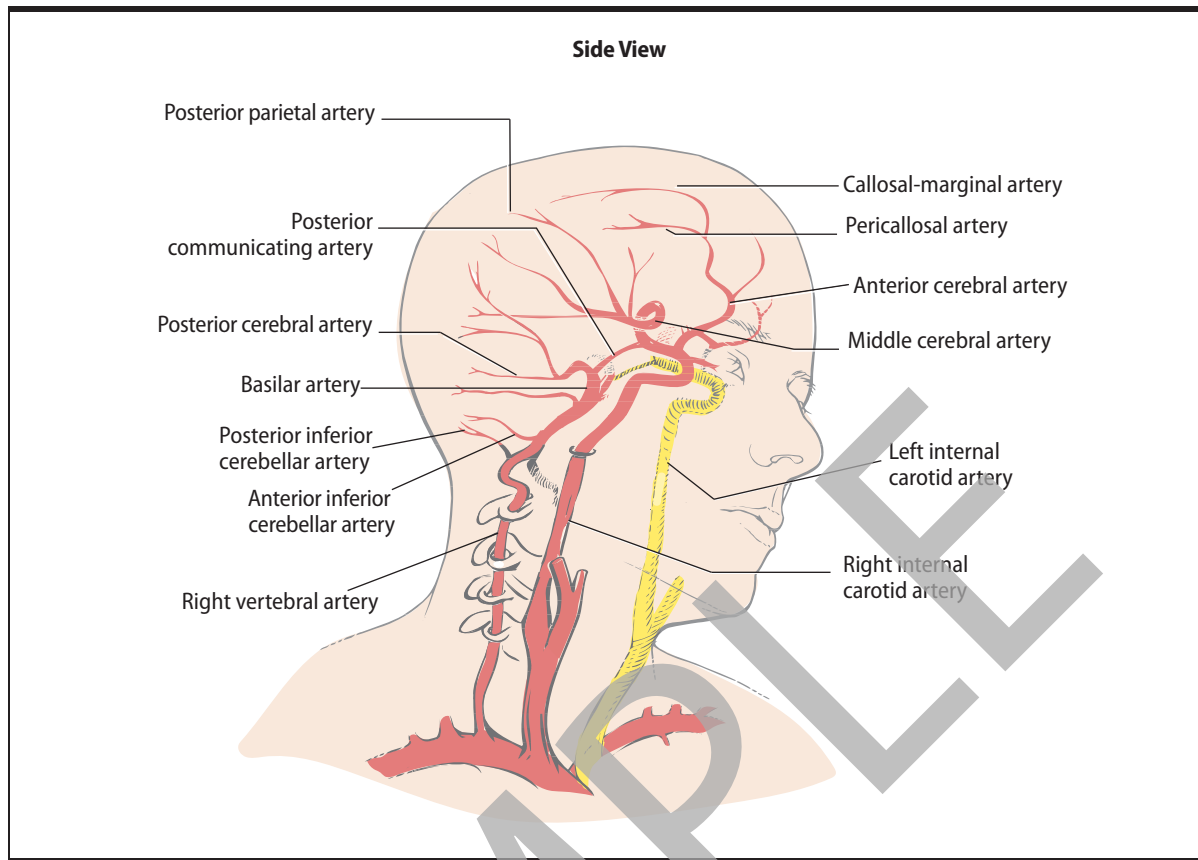
Z01.020 Encounter for examination of eyes and vision following failed vision screening without abnormal findings PDX

Appendix C: Z Codes for Long-Term Drug Use with Associated Drugs

This resource correlates the Z codes that are used to identify current long-term drug use with a list of drugs that are typically categorized to that class of drug. These lists are not all-inclusive, providing only the more commonly used drugs.

Z79.01 Long term (current) use of anticoagulants Arixtra Defencath Eliquis Fragmin Heparin Jantoven Lovenox Pradaxa Savaysa Warfarin Xarelto	Cleocin Clindamycin Daptomycin Difcid Doxycycline E.E.S. Ertapenem ERYC Erygel EryPed Ery-Tab Erythrocine Erythromycin Fetroja Flagyl Gentamicin sulfate Hiprex Invanz Isoniazid Klaron Lincocin Macrobid Macroclantin Mepron Merrem Metronidazole Minocin Monodox Monurol Mycobutin Nebupent Neosporin Nitrofurantoin Oracea Orbactiv Penicillin-VK Pentam Pfizerpen Priftin Primaxin Rifadin Rimactane Septra Seromycin Silvadene Sivextro Solodyn SoloSec Streptomycin sulfate Suprax Synercid Taliaia Tazicef Teflaro Tetracycline Tobramycin Trimethoprim Tygacil Unasyn Vabomere Vancocin HCl Vancomycin HCl Vibativ Vibramycin Voquezna Xacduro Xenleta Xifaxan Zerbaxa Zithromax Zyvox	Z79.3 Long term (current) use of hormonal contraceptives Aranelle Aviane-28 Beyaz Briellyn Camila Daysee Depo-Provera Depo-SubQ Provera Desogestrel/ethinyl estradiol Enpresse-28 Femhrt Gildagia Gildess 24 FE Junel Levonest Liletta Lo Loestrin Fe Loryna LoSeasonique Low-Ogestrel-28 Mirena Mono-Linyah Natazia Nexplanon NuvaRing Plan B One-Step Provera Seasonale Seasonique Skyla Sprintec Tri-Lo-Estarylla Tri-Lo-Sprintec Tri-Sprintec Velivet Xulane Yasmin Yaz Zovia 1/50E-28	Z79.52 Long term (current) use of systemic steroids Agamree Celestone Soluspan Colocort Cortef Cortenema Cortifoam Depo-Medrol Dexamethasone Intensol Entocort EC Hydrocortisone Kenalog-10 Kenalog-40 Locoid Medrol Methylprednisolone Orapred ODT PediaPred Prednisolone Prednisone Ravos Solu-Cortef Solu-Medrol
Z79.02 Long term (current) use of antithrombotics/antiplatelets Aggrastat Angiomax Argatroban Brilinta Clopidogrel bisulfate Effient Eptifibatide Persantine Plavix Prasugrel			Z79.61 Long term (current) use of immunomodulator Otezla Pomalyst Revlimid Thalomid
Z79.1 Long term (current) use of non-steroidal anti-inflammatories (NSAID) Advil Aleve Anaprox DS Arthrotec Caldolor Cambia Celebrex Daypro Duexis Feldene Ibuprofen Indocin Mobic Motrin IB Nabumetone Nalfon Naprelan Naprosyn NeoProfen Ponstel Voltaren Arthritis Pain Zipsor		Z79.4 Long term (current) use of insulin Admelog Apidra Basaglar Fiasp Humalog Humulin R Lantus Levemir Novolin Novolog Soliqua Toujeo Solostar Tresiba Xultophy 100/3.6	Z79.62 Long term (current) use of immunosuppressive biologic Actemra Aimovig Beyfortus Briumvi Columvi Cosentyx Cyltezo Dupixent Elrexio Enbrel Entyvio Epkinly Humira Hyrimoz Imjudo Keytruda Loqtorzi Monoclonal antibodies Omvoh Prolia Remicade Rituxan Simulect Skyrizi Stelara Taltz Tremfya Xgeva
Z79.2 Long term (current) use of antibiotics Altabax Amikacin Amoxicillin Ampicillin Augmentin Avelox Azactam Azithromycin Bactrim Biaxin XL Cefazolin sodium Cefepime hydrochloride Cefprozil Ceftriaxone Cefuroxime sodium Centany Cephalexin Cipro Ciprofloxacin Clarithromycin		Z79.51 Long term (current) use of inhaled steroids Advair AirDuo RespiClick Alvesco Arnuity Ellipta Asmanex Breo Ellipta Dulera Flovent HFA Pulmicort Qvar Redihaler Symbicort Trelegy Ellipta	Z79.621 Long term (current) use of calcineurin inhibitor Astagrag XL Cyclosporine Envarsus XR Gengraf Lupkynis Neoral Prograf Protopic Restasis Sandimmune Tacrolimus

Internal Carotid and Vertebral Arteries and Branches



External Carotid Artery and Branches

