

Current Procedural Coding Expert

CPT® codes with Medicare essentials
for enhanced accuracy

SAMPLE



2023

Contents

Introduction	i
Getting Started with <i>Current Procedural Coding Expert</i>	i
General Conventions	i
Resequencing of CPT Codes	i
Code Ranges for Medicare Billing	ii
Icons	ii
Appendixes	iv
Anatomical Illustrations	vii
Integumentary System	viii
Skin and Subcutaneous Tissue	viii
Nail Anatomy	viii
Assessment of Burn Surface Area	viii
Musculoskeletal System	ix
Bones and Joints	ix
Muscles	x
Head and Facial Bones	xi
Nose	xi
Shoulder (Anterior View)	xi
Shoulder (Posterior View)	xi
Shoulder Muscles	xi
Elbow (Anterior View)	xii
Elbow (Posterior View)	xii
Elbow Muscles	xii
Elbow Joint	xii
Lower Arm	xii
Hand	xii
Hip (Anterior View)	xiii
Hip (Posterior View)	xiii
Knee (Anterior View)	xiii
Knee (Posterior View)	xiii
Knee Joint (Anterior View)	xiii
Knee Joint (Lateral View)	xiii
Lower Leg	xiv
Ankle Ligament (Lateral View)	xiv
Ankle Ligament (Posterior View)	xiv
Foot Tendons	xiv
Foot Bones	xiv
Respiratory System	xv
Upper Respiratory System	xv
Nasal Turbinates	xv
Paranasal Sinuses	xvi
Lower Respiratory System	xvi
Lung Segments	xvi
Alveoli	xvi
Arterial System	xvii
Internal Carotid Arteries and Branches	xviii
External Carotid Arteries and Branches	xviii
Upper Extremity Arteries	xviii
Lower Extremity Arteries	xviii
Venous System	xix
Head and Neck Veins	xx
Upper Extremity Veins	xx
Venae Comitantes	xx
Venous Blood Flow	xx
Abdominal Veins	xx
Cardiovascular System	xxi
Coronary Veins	xxi
Anatomy of the Heart	xxi
Heart Cross Section	xxi
Heart Valves	xxi
Heart Conduction System	xxii
Coronary Arteries	xxii

Lymphatic System	xxiii
Axillary Lymph Nodes	xxiv
Lymphatic Capillaries	xxiv
Lymphatic System of Head and Neck	xxiv
Lymphatic Drainage	xxiv
Spleen Internal Structures	xxv
Spleen External Structures	xxv
Digestive System	xxvi
Gallbladder	xxvi
Stomach	xxvi
Mouth (Upper)	xxvii
Mouth (Lower)	xxvii
Pancreas	xxvii
Liver	xxvii
Anus	xxvii
Genitourinary System	xxviii
Urinary System	xxviii
Nephron	xxix
Male Genitourinary	xxix
Testis and Associate Structures	xxix
Male Genitourinary System	xxix
Female Genitourinary	xxx
Female Reproductive System	xxx
Female Bladder	xxx
Female Breast	xxx
Endocrine System	xxxix
Structure of an Ovary	xxxix
Thyroid and Parathyroid Glands	xxxix
Adrenal Gland	xxxix
Thyroid	xxxix
Thymus	xxxix
Nervous System	xxxix
Brain	xxxix
Cranial Nerves	xxxix
Spinal Cord and Spinal Nerves	xxxix
Nerve Cell	xxxix
Eye	xxxvii
Eye Structure	xxxvii
Posterior Pole of Globe/Flow of Aqueous Humor	xxxvii
Eye Musculature	xxxvii
Eyelid Structures	xxxvii
Ear and Lacrimal System	xxxviii
Ear Anatomy	xxxviii
Lacrimal System	xxxviii

Index **Index-1**

Tabular	1
Anesthesia	1
Integumentary System	13
Musculoskeletal System	37
Respiratory System	107
Cardiovascular, Hemic, and Lymphatic	123
Digestive System	181
Urinary System	229
Genital System	246
Endocrine System	269
Nervous System	271
Eye, Ocular Adnexa, and Ear	301
Radiology	319
Medical Decision Making Table for Pathology Clinical Consultations	355

Pathology and Laboratory	357	Appendix J — Inpatient-Only Procedures	711
Medicine	453	Appendix K — Place of Service and Type of Service	719
Evaluation and Management Services Guidelines	535	Appendix L — Multianalyte Assays with Algorithmic Analyses	723
Evaluation and Management	544	Appendix M — Glossary	739
Category II Codes	567	Appendix N — Listing of Sensory, Motor, and Mixed Nerves ..	751
Category III Codes	583	Motor Nerves Assigned to Codes 95907-95913	751
Appendix A — Modifiers	609	Sensory and Mixed Nerves Assigned to Codes 95907-95913	752
CPT Modifiers	609	Appendix O — Vascular Families	753
Modifiers Approved for Ambulatory Surgery Center (ASC) Hospital Outpatient Use	611	Arterial Vascular Family	753
Appendix B — New, Revised, and Deleted Codes	615	Venous Vascular Family	755
New Codes	615	Appendix P — Interventional Radiology Illustrations	757
Revised Codes	621	Internal Carotid and Vertebral Arterial Anatomy	757
Deleted Codes	625	Cerebral Venous Anatomy	758
Resequenced Icon Added	625	Normal Aortic Arch and Branch Anatomy—Transfemoral Approach	759
Web Release New, Revised, and Deleted Codes	625	Superior and Inferior Mesenteric Arteries and Branches	760
Appendix C — Evaluation and Management Extended Guidelines	627	Renal Artery Anatomy—Femoral Approach	761
Appendix D — Crosswalk of Deleted Codes	643	Central Venous Anatomy	762
Appendix E — Resequenced Codes	645	Portal System (Arterial)	763
Appendix F — Add-on Codes, Optum Modifier 50 Exempt, Modifier 51 Exempt, Optum Modifier 51 Exempt, Modifier 63 Exempt, and Modifier 95 Telemedicine Services	651	Portal System (Venous)	764
Add-on Codes	651	Pulmonary Artery Angiography	765
Optum Modifier 50 Exempt Codes	651	Upper Extremity Arterial Anatomy—Transfemoral or Contralateral Approach	766
AMA Modifier 51 Exempt Codes	651	Lower Extremity Arterial Anatomy—Contralateral, Axillary or Brachial Approach	767
Optum Modifier 51 Exempt Codes	651	Lower Extremity Venous Anatomy	768
Modifier 63 Exempt Codes	651	Coronary Arteries Anterior View	769
Telemedicine Services Codes	652	Left Heart Catheterization	769
Appendix G — Medicare Internet-only Manuals (IOMs)	653	Right Heart Catheterization	770
Appendix H — Quality Payment Program	655	Heart Conduction System	770
Proposed 2022/2023 Changes	655	Appendix Q — Severe Acute Respiratory Syndrome Coronavirus 2 (SARS-CoV-2) (coronavirus disease [COVID-19]) Vaccine and Administration Codes	771
Appendix I — Medically Unlikely Edits (MUEs)	657	Appendix R — Digital Medicine Services	773
Practitioner	657		
OPPS	684		

Introduction

Welcome to Optum360's *Current Procedural Coding Expert*, an exciting Medicare coding and reimbursement tool and definitive procedure coding source that combines the work of the Centers for Medicare and Medicaid Services (CMS), American Medical Association (AMA), and Optum360 experts with the technical components you need for proper reimbursement and coding accuracy. Handy snap in tabs are included to indicate those sections used most often for easy reference.

This approach to CPT® Medicare coding utilizes innovative and intuitive ways of communicating the information you need to code claims accurately and efficiently. *Includes* and *Excludes* notes, similar to those found in the ICD-10-CM manual, help determine what services are related to the codes you are reporting. Icons help you crosswalk the code you are reporting to laboratory and radiology procedures necessary for proper reimbursement. CMS-mandated icons and relative value units (RVUs) help you determine which codes are most appropriate for the service you are reporting. Add to that additional information identifying age and sex edits, ambulatory surgery center (ASC) and ambulatory payment classification (APC) indicators, and Medicare coverage and payment rule citations, and *Current Procedural Coding Expert* provides the best in Medicare procedure reporting.

Current Procedural Coding Expert includes the information needed to submit claims to federal contractors and most commercial payers, and is correct at the time of printing. However, CMS, federal contractors, and commercial payers may change payment rules at any time throughout the year. *Current Procedural Coding Expert* includes effective codes that will not be published in the AMA's *Current Procedural Terminology (CPT) book* until the following year. Commercial payers will announce changes through monthly news or information posted on their websites. CMS will post changes in policy on its website at <http://www.cms.gov/transmittals>. National and local coverage determinations (NCDs and LCDs) provide universal and individual contractor guidelines for specific services. The existence of a procedure code does not imply coverage under any given insurance plan.

Current Procedural Coding Expert is based on the AMA's *Current Procedural Terminology* coding system, which is copyrighted and owned by the physician organization. The CPT codes are the nation's official, Health Information Portability and Accountability Act (HIPAA) compliant code set for procedures and services provided by physicians, ambulatory surgery centers (ASCs), and hospital outpatient services, as well as laboratories, imaging centers, physical therapy clinics, urgent care centers, and others.

Getting Started with *Current Procedural Coding Expert*

Current Procedural Coding Expert is an exciting tool combining the most current material at the time of our publication from the AMA's CPT 2022, CMS's online manual system, the Correct Coding initiative, CMS fee schedules, official Medicare guidelines for reimbursement and coverage, the Integrated Outpatient Code Editor (I/OCE), and Optum360's own coding expertise.

These coding rules and guidelines are incorporated into more specific section notes and code notes. Section notes are listed under a range of codes and apply to all codes in that range. Code notes are found under individual codes and apply to the single code.

Material is presented in a logical fashion for those billing Medicare, Medicaid, and many private payers. The format, based on customer comments, better addresses what customers tell us they need in a comprehensive Medicare procedure coding guide.

Designed to be easy to use and full of information, this product is an excellent companion to your AMA CPT manual, and other Optum360 and Medicare resources.

In anticipation of severe acute respiratory syndrome coronavirus 2 (SARS-CoV-2) (COVID-19) vaccines receiving Emergency Use Authorization (EUA) and/or FDA approval, and in order to expedite the availability of codes for coding and reimbursement, the AMA released a set of codes (0001A–0104A, 91300–91310) to be utilized upon receipt of EUA or FDA approval. In *Current Procedural Coding Expert*, these codes have been designated as placeholders and **PLACEHOLDER ONLY** appears next to the code. When the AMA releases an official code descriptor, Optum360 will update the corresponding electronic files and will provide updates to customers to allow them to update their *Current Procedural Coding Expert* book.

For mid-year code updates, official errata changes, correction notices, and any other changes pertinent to the information in *Current Procedural Coding Expert*, see our product update page at <https://www.optum360coding.com/ProductUpdates/>. The password for 2022 is PROCEDURE2022.

Note: The AMA releases code changes quarterly as well as errata or corrections to CPT codes and guidelines and posts them on their website. Some of these changes may not appear in the AMA's CPT book until the following year. *Current Procedural Coding Expert* incorporates the most recent errata or release notes found on the AMA's website at our publication time, including new, revised and deleted codes. *Current Procedural Coding Expert* identifies these new or revised codes from the AMA website errata or release notes with an icon similar to the AMA's current new ● and revised ▲ icons. For purposes of this publication, new CPT codes and revisions that won't be in the AMA book until the next edition are indicated with a ● and a ▲ icon. CPT codes that are new or revised during 2021 but do not appear in the AMA's CPT code book until 2023 are identified in appendix B as "Web Release New, Revised, and Deleted Codes." For the next year's edition of *Current Procedural Coding Expert*, these codes will appear with standard black new or revised icons, as appropriate, to correspond with those changes as indicated in the AMA's CPT book.

General Conventions

Many of the sources of information in this book can be determined by color.

- All CPT codes and descriptions and the Evaluation and Management guidelines from the American Medical Association are in **black text**.
- Includes, Excludes, and other notes appear in **blue text**. The resources used for this information are a variety of Medicare policy manuals, the *National Correct Coding Initiative Policy Manual (NCCI)*, AMA resources and guidelines, and specialty association resources and our Optum360 clinical experts.

Resequencing of CPT Codes

The American Medical Association (AMA) employs a numbering methodology of resequencing, which is the practice of displaying codes outside of their numerical order according to the description relationship. According to the AMA, there are instances in which a new code is needed within an existing grouping of codes, but an unused code number is not available. In these situations, the AMA will resequence the codes. In other words, it will assign a code that is not in numeric sequence with the related codes.

An example of resequencing from *Current Procedural Coding Expert* follows:

	21555	Excision, tumor, soft tissue of neck or anterior thorax, subcutaneous; less than 3 cm
#	21552	3 cm or greater
	21556	Excision, tumor, soft tissue of neck or anterior thorax, subfascial (eg, intramuscular); less than 5 cm
#	21554	5 cm or greater

<p>Analysis — <i>continued</i></p> <ul style="list-style-type: none"> Multianalyte Assays with Algorithmic Analysis — <i>continued</i> <ul style="list-style-type: none"> Probability Predicted Main Cancer Type/Subtype, [81540] Recurrence Score, 81519, 81525 Rejection Risk Score, [81595] Risk Score, 81493, 81506-81512, 81539-81551 [81503, 81504, 81546], [81500] Tissue Similarity, [81504] Unlisted Assay, 81599 Pacemaker, 93279-93281, 93288, 93293-93294 Patient Specific Findings, 99199 Physiologic Data, Remote, [99091], [99453, 99454], [99457] Prostate Tissue Fluorescence Spectroscopy, 0443T Protein <ul style="list-style-type: none"> Tissue <ul style="list-style-type: none"> Western Blot, 88372 Semen, 89320-89322 <ul style="list-style-type: none"> Sperm Isolation, 89260, 89261 Spectrum, 82190 Tear Osmolarity, 83861 Tissue Composition <ul style="list-style-type: none"> Quantitative Magnetic Resonance, 0648T, 0649T <ul style="list-style-type: none"> Multiple Organs, [0697T], [0698T] Translocation <ul style="list-style-type: none"> PML/RARalpha, 81315-81316 t(9;22) (BCF/ABL1), [81206, 81207, 81208, 81209] t(15;17), 81315-81316 X Chromosome Inactivation, [81204] <p>Anapadias</p> <ul style="list-style-type: none"> See Epispadias <p>Anastomosis</p> <ul style="list-style-type: none"> Arteriovenous Fistula <ul style="list-style-type: none"> Direct, 36821 Revision, 36832, 36833 <ul style="list-style-type: none"> with Thrombectomy, 36833 without Thrombectomy, 36832 with Bypass Graft, 35686 with Graft, 36825, 36830, 36832 with Thrombectomy, 36831 Artery <ul style="list-style-type: none"> to Aorta, 33606 to Artery <ul style="list-style-type: none"> Cranial, 61711 Bile Duct <ul style="list-style-type: none"> to Bile Duct, 47800 to Intestines, 47760, 47780 Bile Duct to Gastrointestinal, 47760, 47780, 47785 Broncho-Bronchial, 32486 Caval to Mesenteric, 37160 Cavopulmonary, 33622, 33768 Colorectal, 44620, 44626 Epididymis <ul style="list-style-type: none"> to Vas Deferens <ul style="list-style-type: none"> Bilateral, 54901 Unilateral, 54900 Excision <ul style="list-style-type: none"> Trachea, 31780, 31781 <ul style="list-style-type: none"> Cervical, 31780 Fallopian Tube, 58750 Gallbladder to Intestine, 47720-47740 Gallbladder to Pancreas, 47999 Hepatic Duct to Intestine, 47765, 47802 Ileo-Anal, 45113 Intestine to Intestine, 44130 Intestines <ul style="list-style-type: none"> Colo-anal, 45119 Cystectomy, 51590 Enterocystoplasty, 51960 Enterostomy, 44620-44626 Ileoanal, 44157-44158 Resection <ul style="list-style-type: none"> Laparoscopic, 44202-44205 Intrahepatic Portosystemic, 37182, 37183 Jejunum, 43820-43825 Microvascular <ul style="list-style-type: none"> Free Transfer Jejunum, 43496 Nerve <ul style="list-style-type: none"> Facial to Hypoglossal, 64868 	<p>Anastomosis — <i>continued</i></p> <ul style="list-style-type: none"> Nerve — <i>continued</i> <ul style="list-style-type: none"> Facial to Spinal Accessory, 64864, 64865 Oviduct, 58750 Pancreas to Intestines, 48520, 48540, 48548 Polya, 43632 Portocaval, 37140 Pulmonary, 33606 Renoportal, 37145 Splenorenal, 37180, 37181 Stomach, 43825 <ul style="list-style-type: none"> to Duodenum, 43810 to Jejunum, 43820, 43825, 43860, 43865 Tubotubal, 58750 Ureter <ul style="list-style-type: none"> to Bladder, 50780-50785 to Colon, 50810, 50815 Removal, 50830 to Intestine, 50800, 50820, 50825 Removal, 50830 to Kidney, 50727-50750 to Ureter, 50725-50728, 50760, 50770 Vein <ul style="list-style-type: none"> Saphenopopliteal, 34530 Vein to Vein, 37140-37183 <p>Anastomosis, Aorta-Pulmonary Artery</p> <ul style="list-style-type: none"> See Aorta, Anastomosis, to Pulmonary Artery <p>Anastomosis, Bladder, to Intestine</p> <ul style="list-style-type: none"> See Enterocystoplasty <p>Anastomosis, Hepatic Duct</p> <ul style="list-style-type: none"> See Hepatic Duct, Anastomosis <p>Anastomosis of Lacrimal Sac to Conjunctival Sac</p> <ul style="list-style-type: none"> See Conjunctivorhinostomy <p>Anastomosis of Pancreas</p> <ul style="list-style-type: none"> See Pancreas, Anastomosis <p>Anatomic</p> <ul style="list-style-type: none"> Guide, 3D Printed, 0561T-0562T Model, 3D Printed, 0559T-0560T <p>ANC, 85048</p> <p>Anderson Tibial Lengthening, 27715</p> <p>Androstanediol Glucuronide, 82154</p> <p>Androstanolone</p> <ul style="list-style-type: none"> See Dihydrotestosterone <p>Androstenedione</p> <ul style="list-style-type: none"> Blood or Urine, 82157 <p>Androstenolone</p> <ul style="list-style-type: none"> See Dehydroepiandrosterone <p>Androsterone</p> <ul style="list-style-type: none"> Blood or Urine, 82160 <p>Anesthesia</p> <ul style="list-style-type: none"> See Also Analgesia Abbe-Estlander Procedure, 00102 Abdomen <ul style="list-style-type: none"> Abdominal Wall, 00700-00730, 00800, 00802, 00820-00836 Halsted Repair, 00750-00756 Blood Vessels, 00770, 00880-00882, 01930, 01931 <ul style="list-style-type: none"> Inferior Vena Cava Ligation, 00882 Transvenous Umbrella Insertion, 01930 Endoscopy, 00731-00732, 00811-00813 Extraperitoneal, 00860, 00862, 00866-00868, 00870 Hernia Repair, 00830-00836 <ul style="list-style-type: none"> Diaphragmatic, 00756 Halsted Repair, 00750-00756 Omphalocele, 00754 Intraperitoneal, 00790-00797, 00840-00851 Laparoscopy, 00790 Liver Transplant, 00796 Pancreatectomy, 00794 Renal Transplant, 00868 Abdominoperineal Resection, 00844 Abortion <ul style="list-style-type: none"> Incomplete, 01965 Induced, 01966 Achilles Tendon Repair, 01472 Acromioclavicular Joint, 01620 Adrenalectomy, 00866 Amniocentesis, 00842 Amputation <ul style="list-style-type: none"> Femur, 01232 Forequarter, 01636 Interthoracoscaphic, 01636 	<p>Anesthesia — <i>continued</i></p> <ul style="list-style-type: none"> Amputation — <i>continued</i> Penis <ul style="list-style-type: none"> Complete, 00932 Radical with Bilateral Inguinal and Iliac Lymphadenectomy, 00936 Radical with Bilateral Inguinal Lymphadenectomy, 00934 Aneurysm <ul style="list-style-type: none"> Axillary-Brachial, 01652 Knee, 01444 Popliteal Artery, 01444 Angiography, 01920 Angioplasty, 01924-01926 Ankle, 00400, 01462-01522 Achilles Tendon, 01472 Nerves, Muscles, Tendons, 01470 Skin, 00400 Anorectal Procedure, 00902 Anus, 00902 Arm <ul style="list-style-type: none"> Lower, 00400, 01810-01860 <ul style="list-style-type: none"> Arteries, 01842 Bones, Closed, 01820 Bones, Open, 01830 Cast Application, 01860 Cast Removal, 01860 Embolectomy, 01842 Nerves, Muscle, Tendons, 01810 Phleborrhaphy, 01852 Shunt Revision, 01844 Skin, 00400 Total Wrist, 01832 Veins, 01850 Upper Arm, and Elbow, 00400, 01710-01732 <ul style="list-style-type: none"> Nerves, Muscles, Tendons, 01710 Tenodesis, 01716 Tenoplasty, 01714 Tenotomy, 01712 Skin, 00400 Arrhythmias, 00410 Arteriograms, 01916 Arteriography, 01916 Arteriovenous (AV) Fistula, 01432 Arthroplasty <ul style="list-style-type: none"> Hip, 01214, 01215 Knee, 01402 Arthroscopic Procedures <ul style="list-style-type: none"> Ankle, 01464 Elbow, 01732-01740 Foot, 01464 Hip, 01202 Knee, 01382, 01400, 01464 Shoulder, 01610-01638 Wrist, 01829-01830 Auditory Canal, External <ul style="list-style-type: none"> Removal Foreign Body, 69205 Axilla, 00400, 01610-01670 Back Skin, 00300 Batch-Spittler-McFaddin Operation, 01404 Biopsy, 00100 <ul style="list-style-type: none"> Anorectal, 00902 Clavicle, 00454 External Ear, 00120 Inner Ear, 00120 Intraoral, 00170 Liver, 00702 Middle Ear, 00120 Nose, 00164 Parotid Gland, 00100 Salivary Gland, 00100 Sinuses, Accessory, 00164 Sublingual Gland, 00100 Submandibular Gland, 00100 Bladder, 00870, 00912 Blepharoplasty, 00103 Brain, 00210-00218, 00220-00222 Breast, 00402-00406 <ul style="list-style-type: none"> Augmentation Mammoplasty, 00402 Breast Reduction, 00402 Muscle Flaps, 00402 Bronchi, 00542 <ul style="list-style-type: none"> Intrathoracic Repair of Trauma, 00548 Reconstruction, 00539 	<p>Anesthesia — <i>continued</i></p> <ul style="list-style-type: none"> Bronchoscopy, 00520 Burns <ul style="list-style-type: none"> Debridement and/or Excision, 01951-01953 Dressings and/or Debridement, 16020-16030 Burr Hole, 00214 Bypass Graft <ul style="list-style-type: none"> Coronary Artery without Pump Oxygenator, 00566 Leg <ul style="list-style-type: none"> Lower, 01500 Upper, 01270 Shoulder, Axillary, 01654, 01656 with Pump Oxygenator, Younger Than One Year of Age, 00561 Cardiac Catheterization, 01920 Cardioverter, 00534, 00560 Cast <ul style="list-style-type: none"> Application <ul style="list-style-type: none"> Body Cast, 01130 Forearm, 01860 Hand, 01860 Knee Joint, 01420 Lower Leg, 01490 Pelvis, 01130 Shoulder, 01680 Wrist, 01860 Removal <ul style="list-style-type: none"> Forearm, 01860 Hand, 01860 Knee Joint, 01420 Lower Leg, 01490 Shoulder, 01680 Repair <ul style="list-style-type: none"> Forearm, 01860 Hand, 01860 Knee Joint, 01420 Lower Leg, 01490 Shoulder, 01680 Central Venous Circulation, 00532 Cervical Cerclage, 00948 Cervix, 00948 Cesarean Section, 01961, 01963, 01968, 01969 Chest, 00400-00410, 00470-00474, 00522, 00530-00539, 00542, 00546-00550 Chest Skin, 00400 Childbirth <ul style="list-style-type: none"> Cesarean Delivery, 01961, 01963, 01968, 01969 External Cephalic Version, 01958 Vaginal Delivery, 01960, 01967 Clavicle, 00450, 00454 Cleft Lip Repair, 00102 Cleft Palate Repair, 00172 Colpectomy, 00942 Colporrhaphy, 00942 Colpotomy, 00942 Conscious Sedation, 99151-99157 Corneal Transplant, 00144 Coronary Procedures, 00560-00580 Craniectomy, 00211 Cranioplasty, 00215 Craniotomy, 00211 Culdoscopy, 00950 Cystectomy, 00864 Cystolithotomy, 00870 Cystourethroscopy <ul style="list-style-type: none"> Local, 52265 Spinal, 52260 Decortication, 00542 Defibrillator, 00534, 00560 Diaphragm, 00540-00541 Disarticulation <ul style="list-style-type: none"> Hip, 01212 Knee, 01404 Shoulder, 01634 Discography, 01937-01938 Donor <ul style="list-style-type: none"> Nephrectomy, 00862 Dressing Change, 15852 Drug Administration <ul style="list-style-type: none"> Epidural or Subarachnoid, 01996 Ear, 00120-00126 ECT, 00104
---	---	--	---

Catheter

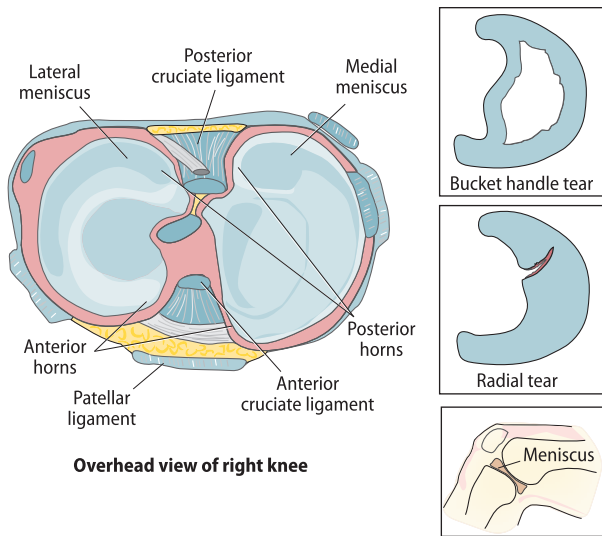
Catheter — *continued*
 Placement — *continued*
 Bronchus
 for Intracavitary Radioelement Placement, 31643
 Head and/or Neck, 41019
 Muscle and/or Soft Tissue, 20555
 Nephrostomy, Percutaneous, [50432]
 Nephroureteral, [50433, 50434]
 Radiation Source, 61770
 Stent, 33621, 61635
 Wireless Physiologic Sensor, 34701-34708
 Removal
 Central Venous, 36589
 Foreign Body, 37197
 Nephroureteral, Accessible, 50387
 Obstruction, 36595-36596
 Peritoneum, 49422
 Pleural Catheter, 32552
 Spinal Cord, 62355
 Repair
 Central Venous, 36575
 Intraperitoneal, 49325
 Replacement
 Central Venous, 36580-36581, 36584
 Nephroureteral, Accessible, 50387
 Shunt System, 62230
 Subarachnoid, 62194
 Subdural, 62194
 Suprapubic, 51705, 51710
 Ventricular, 62225
 Repositioning, 36597
 Thrombectomy, 34001, 34051, 34101-34111, 34151, 34201, 34203, 34401, 34421, 34451, 61645
 Transcatheter Therapy, 36640, 36660, 62320-62327, [37211, 37212, 37213, 37214]
 Ureteral
 Manometric Studies, 50396, 50686
 Ureterography, 50684
 Ureteropyelography, 50684
Catheterization
 Abdomen, 49324, 49418-49419, 49421
 Abdominal Artery, 36245-36248
 Aorta, 36160-36215
 Arterial
 Aorta, 36200, 36221
 Translumbar, 36160
 Arteriovenous Shunt
 Dialysis Circuit, 36901-36903
 Cutdown, 36625
 Intracatheter/Needle, 36100-36140
 Percutaneous, 36620
 Selective Placement, 36215-36218, 36222-36252
 Supers elective Placement, 36253-36254
 Arteriovenous Shunt
 Dialysis Circuit, 36901-36903
 Bile Duct
 Change, 47535-47536
 Percutaneous, 47533-47534
 Removal, 47537
 Bladder, 51045, 51102
 Brachiocephalic Artery, 36215-36218
 Brain, 61210
 Replacement, 62160, 62194, 62225
 Stereotactic, 64999
 Bronchus
 for Intracavitary Radioelement Application, 31643
 with Bronchial Brush Biopsy, 31717
 Cardiac
 Combined Left and Right Heart, 93453, 93460-93461
 for Congenital Anomalies, 93596-93597
 with Ventriculography, 93453, 93460-93461
 Flow Directed, 93503
 Flow Measurement, 93571-93572
 for Angiography
 Bypass Graft(s), 93455, 93457, 93459-93461
 Congenital Heart, 93563-93564
 Coronary, 93454-93461, 93563

Catheterization — *continued*
 Cardiac — *continued*
 for Angiography — *continued*
 Left Atrial, 93565
 Left Ventricular, 93565
 Pulmonary, 93568
 Right Atrial, 93566
 Right Ventricular, 93566
 for Biopsy, 93505
 for Congenital Anomalies
 Left, 93595
 Right, 93593-93594
 Right and Left, 93596-93597
 for Dilution Studies, 93598
 for Measurement O₂, Cardiac Output, 93451
 for Opacification
 Bypass Graft, 93564
 for Stent Placement, 33621
 for Supravalvular Aortography, 93567
 Imaging, 93452-93461, 93563-93568
 Injection, 93452-93461, 93563-93568
 Insertion Swan-Ganz, 93503
 Left Heart
 by Transapical Puncture, 93462
 by Transseptal Puncture through Intact Septum, 93462
 for Congenital Anomalies, 93595
 with Ventriculography, 93452, 93458-93459, 93565
 Pacemaker, 33210
 Right Heart, 36013, 93451, 93456-93457
 for Congenital Anomalies, 93593-93594
 Carotid Artery, 36100, 36221-36224, 36227-36228
 Central, 36555-36558, 36560-36561, 36563, 36565-36566, 36578, 36580-36583
 Cerebral Artery, 36215
 Cystourethroscopy
 Ejaculatory Duct, 52010
 Ureteral, 52005
 with Insertion Transprostatic Implant, 52441-52442
 Dialysis, 49418-49419, 49421
 Dialysis Circuit, 36901-36903
 Electrode Array, 63650
 Extremity Artery, 36140
 Fallopian Tube, 58345, 74742
 Gastrointestinal, 43241
 Hepatic Vein, 37182-37183
 Innominate Artery, 36222-36223, 36225
 Interstitial Radioelement Application
 Breast, 19296-19298
 Genitalia, 55920
 Head, 41019
 Lung, 31643
 Muscle, 20555
 Neck, 41019
 Pelvic Organs, 55920
 Prostate, 55875
 Soft Tissue, 20555
 Intracranial Neuroendoscopy, 62160
 Intraperitoneal Tunneled, 49324, 49421
 Jejunum
 for Enteral Therapy, 44015
 Legs, 36245-36248
 Nasotracheal, 31720
 Nasotracheobronchi, 31720
 Newborn
 Umbilical Vein, 36510
 Pelvic Artery, 36245-36248
 Peripheral, 36568-36571 [36572, 36573], 36584
 Placement
 Arterial Coronary Conduit without Left Heart Catheterization, 93455
 Coronary Artery without Left Heart Catheterization, 93455
 Venous Coronary Bypass Graft without Left Heart Catheterization, 93455
 Pleural Cavity, 32550-32552
 Portal Vein, 36481, 37182-37183
 Pressure Sensor, 33289
 Pulmonary Artery, 36013-36015
 Radioelement Application
 See Interstitial Radioelement Application

Catheterization — *continued*
 Removal
 Obstructive Material
 Intracatheter, 36596
 Pericatheter, 36595
 Renal Artery, 36251-36254
 Salivary Duct, 42660
 Skull, 61107
 Spinal Cord, 62350, 62351
 Spinal Epidural or Intrathecal, 62350, 62351, 62360-62362
 Removal, 62355
 Subclavian Artery, 36225
 Thoracic Artery, 36215-36218
 Tracheobronchi, 31725
 Umbilical Artery, 36660
 Umbilical Vein, 36510
 Ureter
 Endoscopic, 50553, 50572, 50953, 50972, 52005
 Injection, 50684
 Manometric Studies, 50396, 50686
 Uterus, 58340
 Radiology, 58340
 Vena Cava, 36010
 Venous
 Central-Line, 36555-36558, 36560-36561, 36563, 36565-36566, 36578, 36580-36583
 First Order, 36011
 Intracatheter, 36000
 Needle, 36000
 Organ Blood, 36500
 Peripheral, 36568-36569, 36570-36571, 36584-36585, [36572, 36573]
 Second Order, 36012
 Umbilical Vein, 36510
 Ventricular, 61020, 61026, 61210, 61215, 62160-62162, 62164, 62225
 Vertebral Artery, 36100, 36221, 36225-36226, 36228
 with Cholecystostomy, 47490
Cauda Equina
 See Spinal Cord
 Decompression, 63005, 63011-63012, 63017, 63047-63048, 63056-63057
 Exploration, 63005, 63011, 63017
 Vertebral Corpectomy, 63087-63088
Cauterization
 Anus
 Bleeding Control, 46614
 Destruction of Hemorrhoid(s), 46930
 Fissure, 46940, 46942
 Removal
 Polyp
 Multiple, 46612
 Single, 46610
 Tumor
 Multiple, 46612
 Single, 46610
 Cervix, 57522
 Cryocautery, 57511
 Electro or Thermal, 57510
 Laser Ablation, 57513
 Chemical
 Corneal Epithelium, 65435-65436
 Granulation Tissue, 17250
 Colon
 Bleeding Control, 45334, 45382
 Removal Tumor, 45333, 45384
 Cornea, 65450
 Ectropion, 67915
 Entropion, 67922
 Esophagus
 Removal Tumor, 43216, 43250
 Everted Punctum, 68705
 Intrarenal Stricture, 52343, 52346
 Iris, 66155
 Lacrimal Punctum Closure, 68760
 Lower Esophageal Sphincter
 Thermal via Endoscopy, 43257
 Nasopharyngeal Hemorrhage, 42970
 Nose
 Hemorrhage, 30901-30906
 Prostate Resection, 52601

Cauterization — *continued*
 Rectum
 Bleeding Control, 45317
 Removal Polyp
 Multiple, 45315
 Single, 45308
 Removal Tumor, 45308
 Multiple, 45315
 Single, 45308
 Skin Lesion
 Benign, 17000-17004
 Malignant, 17260-17286
 Pre-malignant, 17000-17004
 Skin Tags, 11200, 11201
 Small Intestine
 Bleeding Control, 44366, 44378, 44391
 Removal Polyp(s), 44366, 44392
 Removal Tumor(s), 44365-44366, 44392
 Turbinate Mucosa, 30801, 30802
 Ureteral Stricture, 52341, 52344
 Ureteropelvic Junction Stricture, 52342, 52345
 Urethral Caruncle, 53265
CAV3, 81404
CAVB, 93650
Cavernitides, Fibrous
 See Peyronie Disease
Cavernosography
 Corpora, 54230
Cavernosometry, 54231
Cavities, Pleural
 See Pleural Cavity
Cavus Foot Correction, 28309
CBF (Complete Blood Count), 85025-85027
CBF/MVH11, 81401
CBS, 81401, 81406
CcEe Antigens, 81403
CCHC-type zinc finger nucleic acid binding protein, [81187]
CCND1/IGH (t(11;14)), [81168]
CCRS, 81400
CCU (Critical Care Unit)
 See Critical Care Services
CD109, [81112]
CD142 Antigens, 85250
CD143 Antigens, 82164
CD4, 86360
CD40LG, 81404
CD8, 86360
CDH1, 81406, 81432, 81435
CDH2, 81408, 81430
CDKL5, 81405-81406, [81419]
CDKN2A, 81404
CEA (Carcinoembryonic Antigen), 82378
C/EBP, 81218
CEBPA (CCAAT/enhancer binding protein [C/EBP], alpha), 81218
Cecil Repair, 54318
Cecostomy
 Contrast, 49465
 Laparoscopic, 44188
 Obstructive Material Removal, 49460
 Radiological Evaluation, 49465
 Skin Level, 44320
 Tube Imaging, 49465
 Tube Insertion
 Open, 44300
 Percutaneous, 49442
 Tube Replacement, 49450
 with Colectomy, 44141
CEL, 81403
Celestin Procedure, 43510
Celiac Plexus
 Destruction, 64680
 Injection
 Anesthetic, 64530
 Neurolytic, 64680
Celiac Trunk Artery
 See Artery, Celiac
Celioscopy
 See Endoscopy, Peritoneum
Celiotomy, 49000
Cell
 Blood
 See Blood Cell
 Count
 B Cells, 86355

27332 Arthroscopy, with excision of semilunar cartilage (meniscectomy) knee; medial OR lateral
 18.5 18.5 FUD 090 J A2 80 50
 AMA: 2018, Sep, 7



27333 medial AND lateral
 16.9 16.9 FUD 090 J A2 80 50
 AMA: 2018, Sep, 7; 2018, Jan, 8; 2017, Jan, 8; 2016, Jan, 13

27334 Arthroscopy, with synovectomy, knee; anterior OR posterior
 19.7 19.7 FUD 090 J A2 80 50
 AMA: 2018, Sep, 7

27335 anterior AND posterior including popliteal area
 22.0 22.0 FUD 090 J A2 80 50
 AMA: 2018, Sep, 7

27337 Resequenced code. See code following 27327.

27339 Resequenced code. See code before 27330.

27340 Excision, prepatellar bursa
 10.6 10.6 FUD 090 J A2 50
 AMA: 2018, Sep, 7

27345 Excision of synovial cyst of popliteal space (eg, Baker's cyst)
 13.9 13.9 FUD 090 J A2 80 50
 AMA: 2018, Sep, 7

27347 Excision of lesion of meniscus or capsule (eg, cyst, ganglion), knee
 15.1 15.1 FUD 090 J A2 80 50
 AMA: 2018, Sep, 7

27350 Patellectomy or hemipatellectomy
 18.8 18.8 FUD 090 J A2 80 50
 AMA: 2018, Sep, 7

27355 Excision or curettage of bone cyst or benign tumor of femur;
 17.4 17.4 FUD 090 J A2 80 50
 AMA: 2018, Sep, 7

27356 with allograft
 21.3 21.3 FUD 090 J 62 80 50
 AMA: 2019, May, 7; 2018, Sep, 7

27357 with autograft (includes obtaining graft)
 23.5 23.5 FUD 090 J A2 80 50
 AMA: 2018, Sep, 7; 2018, Jan, 8; 2017, Jan, 8; 2016, Jan, 13

+ 27358 with internal fixation (List in addition to code for primary procedure)
 Code first (27355-27357)
 8.03 8.03 FUD ZZZ N 11 80
 AMA: 2018, Sep, 7

27360 Partial excision (craterization, saucerization, or diaphysectomy) bone, femur, proximal tibia and/or fibula (eg, osteomyelitis or bone abscess)
 24.7 24.7 FUD 090 J A2 80 50
 AMA: 2018, Sep, 7

27329-27365 [27329] Radical Resection Tumor Knee/Thigh

INCLUDES Any necessary elevation tissue planes or dissection
 Excision adjacent soft tissue during bone tumor resection
 Measurement tumor and necessary margin at greatest diameter prior to excision
 Radical resection bone tumor: resection tumor (may include entire bone) and wide margins normal tissue primarily for malignant or aggressive benign tumors
 Radical resection soft tissue tumor: wide resection tumor involving substantial margins normal tissue that may include tissue removal from one or more layers; most often malignant or aggressive benign
 Simple and intermediate repairs
EXCLUDES Complex repair
 Radical resection cutaneous tumors (eg, melanoma) (11600-11606)
 Significant vessel exploration, neuroplasty, reconstruction, or complex bone repair

27329 Radical resection of tumor (eg, sarcoma), soft tissue of thigh or knee area; less than 5 cm
 30.1 30.1 FUD 090 J 62 80 50
 AMA: 2018, Sep, 7

27364 5 cm or greater
 45.2 45.2 FUD 090 J 62 80 50
 AMA: 2018, Sep, 7

27365 Radical resection of tumor, femur or knee
EXCLUDES Soft tissue tumor excision thigh or knee area (27329, 27364)
 59.6 59.6 FUD 090 C 80 50
 AMA: 2019, May, 7; 2018, Sep, 7

27369 Injection for Arthrogram of Knee

EXCLUDES Arthrocentesis, aspiration and/or injection, knee (20610-20611)
 Arthroscopy, knee (29871)

27369 Injection procedure for contrast knee arthrography or contrast enhanced CT/MRI knee arthrography
 Code also fluoroscopic guidance, when performed for CT/MRI arthrography (73701-73702, 73722-73723, 77002)
 (73580, 73701-73702, 73722-73723)
 1.17 4.06 FUD 000 N 1 50
 AMA: 2019, Aug, 7

27372 Foreign Body Removal Femur or Knee

EXCLUDES Arthroscopic procedures (29870-29887)
 Removal knee prosthesis (27488)

27372 Removal of foreign body, deep, thigh region or knee area
 11.4 17.0 FUD 090 J A2 80 50
 AMA: 2018, Sep, 7

27380-27499 Repair/Reconstruction of Femur or Knee

27380 Suture of infrapatellar tendon; primary
 17.5 17.5 FUD 090 J A2 80 50
 AMA: 2018, Sep, 7

27381 secondary reconstruction, including fascial or tendon graft
 23.0 23.0 FUD 090 J 18 80 50
 AMA: 2018, Sep, 7

27385 Suture of quadriceps or hamstring muscle rupture; primary
 16.9 16.9 FUD 090 J A2 80 50
 AMA: 2018, Sep, 7; 2018, Jan, 8; 2017, Aug, 9

33335 with cardiopulmonary bypass
 54.6 54.6 FUD 090 [C] [80] [M]
 AMA: 2018,Jan,11; 2017,Dec,3

33340 Closure Left Atrial Appendage
EXCLUDES Cardiac catheterization except for reasons other than closure left atrial appendage (93451-93453, 93456, 93458-93461, 93462, 93593-93598)
 Code also intracardiac echocardiography, if performed (93662)
 Code also transvascular ventricular support, when performed:
 Balloon pump (33967, 33968, 33970-33974)
 Extracorporeal membrane oxygenation (ECMO)/extracorporeal life support (ECLS) (33946-33949)
 Ventricular assist device (33975-33983, [33995], 33990-33993 [33997])

33340 Percutaneous transcatheter closure of the left atrial appendage with endocardial implant, including fluoroscopy, transeptal puncture, catheter placement(s), left atrial angiography, left atrial appendage angiography, when performed, and radiological supervision and interpretation
 22.9 22.9 FUD 000 [C] [80] [M]
 AMA: 2018,Jan,8; 2017,Jul,3

33361-33369 Transcatheter Aortic Valve Replacement
CMS: 100-03,20.32 Transcatheter Aortic Valve Replacement (TAVR); 100-04,32,290.3 Claims Processing TAVR Inpatient; 100-04,32,290.4 Payment of TAVR for MA Plan Participants

INCLUDES Access and implantation aortic valve (33361-33366)
 Access sheath placement
 Advancement valve delivery system
 Arteriotomy closure
 Balloon aortic valvuloplasty
 Cardiac or open arterial approach
 Deployment of valve
 Percutaneous access
 Radiology procedures:
 Angiography during and after procedure
 Assessment access site for closure
 Documentation intervention completion
 Guidance for valve placement
 Supervision and interpretation
 Temporary pacemaker
 Valve repositioning when necessary

EXCLUDES Cardiac catheterization procedures included in TAVR/TAVI service (93452-93453, 93458-93461, 93567)
 Percutaneous coronary interventional procedures
 Code also cardiac catheterization services for purposes other than TAVR/TAVI
 Code also diagnostic coronary angiography at different session from interventional procedure
 Code also diagnostic coronary angiography same time as TAVR/TAVI when:
 Previous study available, but documentation states patient's condition has changed since previous study, visualization anatomy/pathology inadequate, or change occurs during procedure warranting additional evaluation outside current target area
 No previous catheter-based coronary angiography study available, and full diagnostic study performed, with decision to perform intervention based on that study
 Code also modifier 59 when diagnostic coronary angiography procedures performed as separate and distinct procedural services on same day or session as TAVR/TAVI
 Code also modifier 62 as all TAVI/TAVR procedures require work two physicians
 Code also transvascular ventricular support, when performed:
 Balloon pump (33967, 33970, 33973)
 Ventricular assist device (33975-33976, [33995], 33990-33993 [33997])

33361 Transcatheter aortic valve replacement (TAVR/TAVI) with prosthetic valve; percutaneous femoral artery approach
 Code also cardiopulmonary bypass when performed (33367-33369)
 39.4 39.4 FUD 000 [C] [80] [M]
 AMA: 2018,Jan,8; 2017,Jan,8; 2016,Jan,13

33362 open femoral artery approach
 Code also cardiopulmonary bypass when performed (33367-33369)
 43.1 43.1 FUD 000 [C] [80] [M]
 AMA: 2018,Jan,8; 2017,Dec,3; 2017,Jan,8; 2016,Jan,13

33363 open axillary artery approach
 Code also cardiopulmonary bypass when performed (33367-33369)
 44.6 44.6 FUD 000 [C] [80] [M]
 AMA: 2018,Jan,8; 2017,Dec,3; 2017,Jan,8; 2016,Jan,13

33364 open iliac artery approach
 Code also cardiopulmonary bypass when performed (33367-33369)
 46.1 46.1 FUD 000 [C] [80] [M]
 AMA: 2018,Jan,8; 2017,Dec,3; 2017,Jan,8; 2016,Jan,13

33365 transaortic approach (eg, median sternotomy, mediastinotomy)
 Code also cardiopulmonary bypass when performed (33367-33369)
 51.8 51.8 FUD 000 [C] [80] [M]
 AMA: 2018,Jan,8; 2017,Jan,8; 2016,Jan,13

33366 transapical exposure (eg, left thoracotomy)
 Code also cardiopulmonary bypass when performed (33367-33369)
 45.7 45.7 FUD 000 [C] [80] [M]
 AMA: 2018,Jan,8; 2017,Jan,8; 2016,Jan,13

+ 33367 cardiopulmonary bypass support with percutaneous peripheral arterial and venous cannulation (eg, femoral vessels) (List separately in addition to code for primary procedure)
EXCLUDES Cardiopulmonary bypass support with open or central arterial and venous cannulation (33368-33369)
 Cerebral embolic protection device (33370)
 Code first (33361-33366, 33418, 33477, 0483T-0484T, 0544T, 0545T, [0643T], 0569T, 0570T, 0644T)
 18.2 18.2 FUD ZZZ [C] [80] [M]
 AMA: 2018,Jan,8; 2017,Jan,8; 2016,Mar,5; 2016,Jan,13

+ 33368 cardiopulmonary bypass support with open peripheral arterial and venous cannulation (eg, femoral, iliac, axillary vessels) (List separately in addition to code for primary procedure)
EXCLUDES Cardiopulmonary bypass support with percutaneous or central arterial and venous cannulation (33367, 33369)
 Code first (33361-33366, 33418, 33477, 0483T-0484T, 0544T, 0545T, [0643T], 0569T, 0570T, 0644T)
 21.7 21.7 FUD ZZZ [C] [80] [M]
 AMA: 2018,Jan,8; 2017,Jan,8; 2016,Mar,5; 2016,Jan,13

+ 33369 cardiopulmonary bypass support with central arterial and venous cannulation (eg, aorta, right atrium, pulmonary artery) (List separately in addition to code for primary procedure)
EXCLUDES Cardiopulmonary bypass support with percutaneous or open arterial and venous cannulation (33367-33368)
 Code first (33361-33366, 33418, 33477, 0483T-0484T, 0544T, 0545T, [0643T], 0569T-0570T, 0644T)
 28.6 28.6 FUD ZZZ [C] [80] [M]
 AMA: 2018,Jan,8; 2017,Jan,8; 2016,Mar,5; 2016,Jan,13

33370 Cerebral Embolic Protection Device

+ 33370 Transcatheter placement and subsequent removal of cerebral embolic protection device(s), including arterial access, catheterization, imaging, and radiological supervision and interpretation, percutaneous (List separately in addition to code for primary procedure)
INCLUDES Angiography (75710)
 Aortography (75600)
 Ultrasound guidance (76937)
EXCLUDES Additional or multiple filter placement
 Code first transcatheter aortic valve replacement (TAVR/TAVI) (33361-33366)
 0.00 0.00 FUD 000

- 62368 **with reprogramming**
EXCLUDES Maintenance and refilling infusion pumps for CNS drug therapy (95990-95991)
1.01 1.57 FUD XXX S P3 M
 AMA: 2018,Jan,8; 2017,Jan,8; 2016,Jan,13
- 62369 **with reprogramming and refill**
EXCLUDES Maintenance and refilling infusion pumps for CNS drug therapy (95990-95991)
1.01 3.34 FUD XXX S P3 M
 AMA: 2018,Jan,8; 2017,Jan,8; 2016,Jan,13
- 62370 **with reprogramming and refill (requiring skill of a physician or other qualified health care professional)**
EXCLUDES Maintenance and refilling infusion pumps for CNS drug therapy (95990-95991)
1.33 3.47 FUD XXX S P3 M
 AMA: 2018,Jan,8; 2017,Jan,8; 2016,Jan,13

62380 Endoscopic Decompression/Laminectomy/Laminotomy

EXCLUDES Open decompression (63030, 63056)
 Percutaneous decompression (62267, 0274T-0275T)

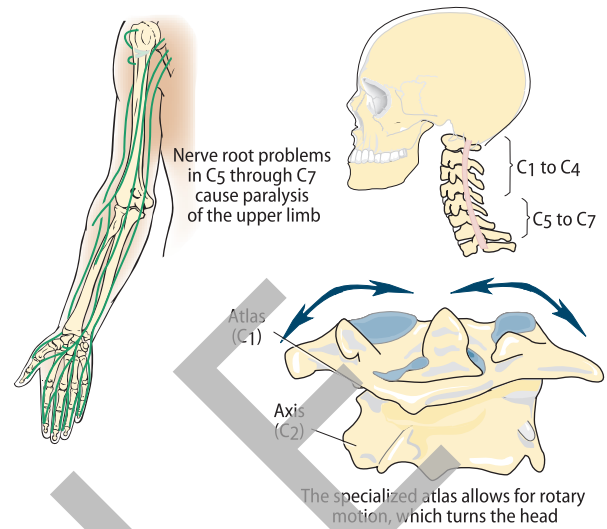
- 62380 **Endoscopic decompression of spinal cord, nerve root(s), including laminotomy, partial facetectomy, foraminotomy, discectomy and/or excision of herniated intervertebral disc, 1 interspace, lumbar**
0.00 0.00 FUD 090 J 62 80 50 M
 AMA: 2018,Jan,8; 2017,Jan,8; 2016,Jan,13

63001-63053 [63052, 63053] Posterior Midline Approach: Laminectomy/Laminotomy/Decompression

INCLUDES Endoscopic assistance through open and direct visualization
EXCLUDES Arthrodesis (22590-22614)
 Percutaneous decompression (62287, 0274T, 0275T)

- 63001 **Laminectomy with exploration and/or decompression of spinal cord and/or cauda equina, without facetectomy, foraminotomy or discectomy (eg, spinal stenosis), 1 or 2 vertebral segments; cervical**
35.7 35.7 FUD 090 J 62 80 M
 AMA: 2018,Jan,8; 2017,Mar,7; 2017,Jan,8; 2016,Jan,13
- 63003 **thoracic**
35.7 35.7 FUD 090 J 62 80 M
 AMA: 2018,Jan,8; 2017,Mar,7; 2017,Jan,8; 2016,Jan,13
- 63005 **lumbar, except for spondylolisthesis**
34.4 34.4 FUD 090 J 62 80 M
 AMA: 2018,Jan,8; 2017,Mar,7; 2017,Jan,8; 2016,Jan,13
- 63011 **sacral**
31.6 31.6 FUD 090 J 62 80 M
 AMA: 2018,Jan,8; 2017,Mar,7; 2017,Jan,8; 2016,Jan,13
- 63012 **Laminectomy with removal of abnormal facets and/or pars inter-articularis with decompression of cauda equina and nerve roots for spondylolisthesis, lumbar (Gill type procedure)**
34.6 34.6 FUD 090 J 62 80 M
 AMA: 2019,Dec,12; 2018,Jan,8; 2017,Mar,7; 2017,Jan,8; 2017,Jan,8; 2016,Jan,13
- 63015 **Laminectomy with exploration and/or decompression of spinal cord and/or cauda equina, without facetectomy, foraminotomy or discectomy (eg, spinal stenosis), more than 2 vertebral segments; cervical**
42.7 42.7 FUD 090 J 62 80 M
 AMA: 2018,Jan,8; 2017,Mar,7; 2017,Jan,8; 2016,Jan,13
- 63016 **thoracic**
44.3 44.3 FUD 090 J 62 80 M
 AMA: 2018,Jan,8; 2017,Mar,7; 2017,Jan,8; 2016,Jan,13

- 63017 **lumbar**
36.7 36.7 FUD 090 J 62 80 M
 AMA: 2018,Jan,8; 2017,Mar,7; 2017,Jan,8; 2017,Jan,8; 2016,Jan,13



- 63020 **Laminotomy (hemilaminectomy), with decompression of nerve root(s), including partial facetectomy, foraminotomy and/or excision of herniated intervertebral disc; 1 interspace, cervical**
33.4 33.4 FUD 090 J 62 80 50 M
 AMA: 2018,Jan,8; 2017,Mar,7; 2017,Jan,8; 2016,Jan,13

- 63030 **1 interspace, lumbar**
EXCLUDES Laminectomy at same session as posterior interbody fusion for:
 Decompression nerves or spinal components ((63052))
 Preparation of interspace (22630, 22633)
28.2 28.2 FUD 090 J 62 80 50 M
 AMA: 2020,May,13; 2019,Nov,14; 2018,Jan,8; 2017,Mar,7; 2017,Jan,8; 2017,Jan,8; 2017,Jan,8; 2016,Jan,13; 2016,Jan,13

- 63035 **each additional interspace, cervical or lumbar (List separately in addition to code for primary procedure)**
EXCLUDES Laminectomy at same session as posterior interbody fusion for:
 Decompression nerves or spinal components ((63053))
 Preparation of interspace (22632, 22634)
 Reporting with modifier 50. Report once for each side when performed bilaterally
 Code first (63020-63030)
5.55 5.55 FUD ZZZ N N1 80 M
 AMA: 2018,Jan,8; 2017,Jan,8; 2017,Jan,8; 2016,Jan,13

- 63040 **Laminotomy (hemilaminectomy), with decompression of nerve root(s), including partial facetectomy, foraminotomy and/or excision of herniated intervertebral disc, reexploration, single interspace; cervical**
40.4 40.4 FUD 090 J 62 80 50 M
 AMA: 2020,May,13; 2018,Jan,8; 2017,Mar,7; 2017,Jan,8; 2016,Jan,13

- 63042 **lumbar**
EXCLUDES Laminectomy at same session as posterior interbody fusion for:
 Decompression nerves or spinal components ((63052))
 Preparation of interspace (22630, 22633)
37.5 37.5 FUD 090 J 62 80 50 M
 AMA: 2020,May,13; 2018,Jan,8; 2017,Mar,7; 2017,Jan,8; 2017,Jan,8; 2016,Jan,13

- 90666 Influenza virus vaccine (IIV), pandemic formulation, split virus, preservative free, for intramuscular use**
 0.00 0.00 FUD XXX [S] [L] [LI] [M] [P]
 AMA: 2020,DecSE,1; 2020,DecSE,1; 2020,NovSE,1; 2018,Jan,8; 2017,Jan,8; 2016,Jan,13
- 90667 Influenza virus vaccine (IIV), pandemic formulation, split virus, adjuvanted, for intramuscular use**
 0.00 0.00 FUD XXX [S] [L] [LI] [M] [P]
 AMA: 2020,DecSE,1; 2020,DecSE,1; 2020,NovSE,1; 2018,Jan,8; 2017,Jan,8; 2016,Jan,13
- 90668 Influenza virus vaccine (IIV), pandemic formulation, split virus, for intramuscular use**
 0.00 0.00 FUD XXX [S] [L] [LI] [M] [P]
 AMA: 2020,DecSE,1; 2020,DecSE,1; 2020,NovSE,1; 2018,Jan,8; 2017,Jan,8; 2016,Jan,13
- 90670 Pneumococcal conjugate vaccine, 13 valent (PCV13), for intramuscular use**
 INCLUDES Prevnar 13
 0.00 0.00 FUD XXX [S] [L] [LI] [M] [P]
 AMA: 2020,DecSE,1; 2020,DecSE,1; 2020,NovSE,1; 2018,Jan,8; 2017,Jan,8; 2016,Jan,13
- 90671 Pneumococcal conjugate vaccine, 15 valent (PCV15), for intramuscular use**
 0.00 0.00 FUD XXX [S] [L] [LI] [M] [P]
- # 90677 Pneumococcal conjugate vaccine, 20 valent (PCV20), for intramuscular use**
 0.00 0.00 FUD XXX [L] [M] [P]
- 90672 Resequenced code. See code following 90660.**
- 90673 Resequenced code. See code before 90662.**
- 90674 Resequenced code. See code following 90661.**
- 90675 Rabies vaccine, for intramuscular use**
 INCLUDES Imovax
 RabAvert
 0.00 0.00 FUD XXX [S] [K] [K2] [M] [P]
 AMA: 2020,DecSE,1; 2020,DecSE,1; 2020,NovSE,1; 2018,Jan,8; 2017,Jan,8; 2016,Jan,13
- 90676 Rabies vaccine, for intradermal use**
 0.00 0.00 FUD XXX [S] [K] [K2] [M] [P]
 AMA: 2020,DecSE,1; 2020,DecSE,1; 2020,NovSE,1; 2018,Jan,8; 2017,Jan,8; 2016,Jan,13
- 90677 Resequenced code. See code following 90671.**
- 90680 Rotavirus vaccine, pentavalent (RV5), 3 dose schedule, live, for oral use**
 INCLUDES RotaTeq
 0.00 0.00 FUD XXX [S] [N] [NI] [M] [P]
 AMA: 2020,DecSE,1; 2020,DecSE,1; 2020,NovSE,1; 2018,Jan,8; 2017,Jan,8; 2016,Jan,13
- 90681 Rotavirus vaccine, human, attenuated (RV1), 2 dose schedule, live, for oral use**
 INCLUDES Rotarix
 0.00 0.00 FUD XXX [S] [M] [P]
 AMA: 2020,DecSE,1; 2020,DecSE,1; 2020,NovSE,1; 2018,Jan,8; 2017,Jan,8; 2016,Jan,13
- 90682 Influenza virus vaccine, quadrivalent (RIV4), derived from recombinant DNA, hemagglutinin (HA) protein only, preservative and antibiotic free, for intramuscular use**
 INCLUDES Flublok Quadrivalent
 0.00 0.00 FUD XXX [S] [L] [LI] [M] [P]
 AMA: 2020,DecSE,1; 2020,DecSE,1; 2020,NovSE,1; 2018,Nov,7; 2018,Jan,8; 2017,Jan,8
- 90685 Influenza virus vaccine, quadrivalent (IIV4), split virus, preservative free, 0.25 mL, for intramuscular use**
 INCLUDES Afluria Quadrivalent
 0.00 0.00 FUD XXX [S] [L] [LI] [M] [P]
 AMA: 2020,DecSE,1; 2020,DecSE,1; 2020,NovSE,1; 2018,Jan,8; 2017,Jan,8; 2016,Oct,6; 2016,May,9; 2016,Jan,13
- 90686 Influenza virus vaccine, quadrivalent (IIV4), split virus, preservative free, 0.5 mL dosage, for intramuscular use**
 INCLUDES Afluria Quadrivalent
 Fluarix Quadrivalent
 Flulaval Quadrivalent
 Fluzone Quadrivalent
 0.00 0.00 FUD XXX [S] [L] [LI] [M] [P]
 AMA: 2020,DecSE,1; 2020,DecSE,1; 2020,NovSE,1; 2018,Jan,8; 2017,Jan,8; 2016,Oct,6; 2016,May,9; 2016,Jan,13
- 90687 Influenza virus vaccine, quadrivalent (IIV4), split virus, 0.25 mL dosage, for intramuscular use**
 INCLUDES Afluria Quadrivalent
 Fluzone Quadrivalent
 0.00 0.00 FUD XXX [S] [L] [LI] [M] [P]
 AMA: 2020,DecSE,1; 2020,DecSE,1; 2020,NovSE,1; 2018,Jan,8; 2017,Jan,8; 2016,Oct,6; 2016,May,9; 2016,Jan,13
- 90688 Influenza virus vaccine, quadrivalent (IIV4), split virus, 0.5 mL dosage, for intramuscular use**
 INCLUDES Afluria Quadrivalent
 Fluzone Quadrivalent
 0.00 0.00 FUD XXX [S] [L] [LI] [M] [P]
 AMA: 2020,DecSE,1; 2020,DecSE,1; 2020,NovSE,1; 2020,Jul,11; 2018,Jan,8; 2017,Jan,8; 2016,Oct,6; 2016,May,9; 2016,Jan,13
- 90689 Influenza virus vaccine quadrivalent (IIV4), inactivated, adjuvanted, preservative free, 0.25 mL dosage, for intramuscular use**
 0.00 0.00 FUD XXX [S] [L] [LI] [M] [P]
 AMA: 2020,DecSE,1; 2020,DecSE,1; 2020,NovSE,1; 2020,Jul,11; 2019,Jul,10; 2018,Nov,7
- # 90694 Influenza virus vaccine, quadrivalent (allI4), inactivated, adjuvanted, preservative free, 0.5 mL dosage, for intramuscular use**
 INCLUDES Flud Quadrivalent
 0.00 0.00 FUD XXX [S] [L] [LI] [M] [P]
 AMA: 2020,DecSE,1; 2020,DecSE,1; 2020,NovSE,1; 2020,Jul,11
- 90690 Typhoid vaccine, live, oral**
 INCLUDES Vivotif
 0.00 0.00 FUD XXX [S] [N] [NI] [M] [P]
 AMA: 2020,DecSE,1; 2020,DecSE,1; 2020,NovSE,1; 2020,Jul,11; 2018,Jan,8; 2017,Jan,8; 2016,Jan,13
- 90691 Typhoid vaccine, Vi capsular polysaccharide (ViCPs), for intramuscular use**
 INCLUDES Typhim Vi
 0.00 0.00 FUD XXX [S] [N] [NI] [M] [P]
 AMA: 2020,DecSE,1; 2020,DecSE,1; 2020,NovSE,1; 2020,Jul,11; 2018,Jan,8; 2017,Jan,8; 2016,Jan,13
- 90694 Resequenced code. See code following 90689.**
- 90696 Diphtheria, tetanus toxoids, acellular pertussis vaccine and inactivated poliovirus vaccine (DTaP-IPV), when administered to children 4 through 6 years of age, for intramuscular use**
 INCLUDES KINRIX
 Quadracel
 0.00 0.00 FUD XXX [S] [N] [NI] [M] [P]
 AMA: 2020,DecSE,1; 2020,DecSE,1; 2020,NovSE,1; 2018,Jan,8; 2017,Jan,8; 2016,Jan,13
- 90697 Diphtheria, tetanus toxoids, acellular pertussis vaccine, inactivated poliovirus vaccine, Haemophilus influenzae type b PRP-OMP conjugate vaccine, and hepatitis B vaccine (DTaP-IPV-Hib-HepB), for intramuscular use**
 0.00 0.00 FUD XXX [S] [M] [P]
 AMA: 2020,DecSE,1; 2020,DecSE,1; 2020,NovSE,1; 2018,Jan,8; 2017,Jan,8; 2016,Jan,13

Appendix A — Modifiers

CPT Modifiers

A modifier is a two-position alpha or numeric code appended to a CPT® code to clarify the services being billed. Modifiers provide a means by which a service can be altered without changing the procedure code. They add more information, such as the anatomical site, to the code. In addition, they help to eliminate the appearance of duplicate billing and unbundling. Modifiers are used to increase accuracy in reimbursement, coding consistency, editing, and to capture payment data.

- 22 Increased Procedural Services:** When the work required to provide a service is substantially greater than typically required, it may be identified by adding modifier 22 to the usual procedure code. Documentation must support the substantial additional work and the reason for the additional work (ie, increased intensity, time, technical difficulty of procedure, severity of patient's condition, physical and mental effort required).
Note: This modifier should not be appended to an E/M service.
- 23 Unusual Anesthesia:** Occasionally, a procedure, which usually requires either no anesthesia or local anesthesia, because of unusual circumstances must be done under general anesthesia. This circumstance may be reported by adding modifier 23 to the procedure code of the basic service.
- 24 Unrelated Evaluation and Management Service by the Same Physician or Other Qualified Health Care Professional During a Postoperative Period:** The physician or other qualified health care professional may need to indicate that an evaluation and management service was performed during a postoperative period for a reason(s) unrelated to the original procedure. This circumstance may be reported by adding modifier 24 to the appropriate level of E/M service.
- 25 Significant, Separately Identifiable Evaluation and Management Service by the Same Physician or Other Qualified Health Care Professional on the Same Day of the Procedure or Other Service:** It may be necessary to indicate that on the day a procedure or service identified by a CPT code was performed, the patient's condition required a significant, separately identifiable E/M service above and beyond the other service provided or beyond the usual preoperative and postoperative care associated with the procedure that was performed. A significant, separately identifiable E/M service is defined or substantiated by documentation that satisfies the relevant criteria for the respective E/M service to be reported (see Evaluation and Management Services Guidelines for instructions on determining level of E/M service). The E/M service may be prompted by the symptom or condition for which the procedure and/or service was provided. As such, different diagnoses are not required for reporting of the E/M services on the same date. This circumstance may be reported by adding modifier 25 to the appropriate level of E/M service.
Note: This modifier is not used to report an E/M service that resulted in a decision to perform surgery. See modifier 57. For significant, separately identifiable non-E/M services, see modifier 59.
- 26 Professional Component:** Certain procedures are a combination of a physician or other qualified health care professional component and a technical component. When the physician or other qualified health care professional component is reported separately, the service may be identified by adding modifier 26 to the usual procedure number.
- 32 Mandated Services:** Services related to *mandated* consultation and/or related services (eg, third party payer, governmental, legislative or regulatory requirement) may be identified by adding modifier 32 to the basic procedure.
- 33 Preventive Services:** When the primary purpose of the service is the delivery of an evidence based service in accordance with a US Preventive Services Task Force A or B rating in effect and other preventive services identified in preventive services mandates (legislative or regulatory), the service may be identified by adding 33 to the procedure. For separately reported services specifically identified as preventive, the modifier should not be used.
- 47 Anesthesia by Surgeon:** Regional or general anesthesia provided by the surgeon may be reported by adding modifier 47 to the basic service. (This does not include local anesthesia.)
Note: Modifier 47 would not be used as a modifier for the anesthesia procedures.
- 50 Bilateral Procedure:** Unless otherwise identified in the listings, bilateral procedures that are performed at the same session should be identified by adding modifier 50 to the appropriate 5 digit code.
Note: This modifier should not be appended to designated "add-on" codes (see Appendix F).
- 51 Multiple Procedures:** When multiple procedures, other than E/M services, Physical Medicine and Rehabilitation services or provision of supplies (eg, vaccines), are performed at the same session by the same individual, the primary procedure or service may be reported as listed. The additional procedure(s) or service(s) may be identified by appending modifier 51 to the additional procedure or service code(s).
Note: This modifier should not be appended to designated "add-on" codes (see Appendix F).
- 52 Reduced Services:** Under certain circumstances a service or procedure is partially reduced or eliminated at the discretion of the physician or other qualified health care professional. Under these circumstances the service provided can be identified by its usual procedure number and the addition of modifier 52, signifying that the service is reduced. This provides a means of reporting reduced services without disturbing the identification of the basic service.
Note: For hospital outpatient reporting of a previously scheduled procedure/service that is partially reduced or cancelled as a result of extenuating circumstances or those that threaten the well-being of the patient prior to or after administration of anesthesia, see modifiers 73 and 74 (see modifiers approved for ASC hospital outpatient use).
- 53 Discontinued Procedure:** Under certain circumstances, the physician or other qualified health care professional may elect to terminate a surgical or diagnostic procedure. Due to extenuating circumstances or those that threaten the well being of the patient, it may be necessary to indicate that a surgical or diagnostic procedure was started but discontinued. This circumstance may be reported by adding modifier 53 to the code reported by the physician for the discontinued procedure.
Note: This modifier is not used to report the elective cancellation of a procedure prior to the patient's anesthesia induction and/or surgical preparation in the operating suite. For outpatient hospital/ambulatory surgery center (ASC) reporting of a previously scheduled procedure/service that is partially reduced or cancelled as a result of extenuating circumstances or those that threaten the well being of the patient prior to or after administration of anesthesia, see modifiers 73 and 74 (see modifiers approved for ASC hospital outpatient use).
- 54 Surgical Care Only:** When 1 physician or other qualified health care professional performs a surgical procedure and another provides preoperative and/or postoperative management, surgical services may be identified by adding modifier 54 to the usual procedure number.
- 55 Postoperative Management Only:** When 1 physician or other qualified health care professional performed the postoperative management and another performed the surgical procedure, the postoperative component may be identified by adding modifier 55 to the usual procedure number.
- 56 Preoperative Management Only:** When 1 physician or other qualified health care professional performed the preoperative care and evaluation and another performed the surgical procedure, the preoperative component may be identified by adding modifier 56 to the usual procedure number.
- 57 Decision for Surgery:** An evaluation and management service that resulted in the initial decision to perform the surgery may be identified by adding modifier 57 to the appropriate level of E/M service.

Appendix C — Evaluation and Management Extended Guidelines

This appendix provides an overview of evaluation and management (E/M) services, tables that identify the documentation elements associated with each code, the 2021 changes to some E/M services, and the federal documentation guidelines with emphasis on the 1997 exam guidelines. The 1997 version identifies both general multi-system physical examinations and single-system examinations, but providers may also use the original 1995 version of the E/M guidelines; both are currently supported by the Centers for Medicare and Medicaid Services (CMS) for audit purposes when reporting 99217–99499.

The levels of E/M services define the wide variations in skill, effort, and time and are required for preventing and/or diagnosing and treating illness or injury, and promoting optimal health. These codes are intended to represent physician work, and because much of this work involves the amount of training, experience, expertise, and knowledge that a provider may employ when treating a given patient, the true indications of the level of this work may be difficult to recognize without some explanation.

Providers

The AMA advises coders that while a particular service or procedure may be assigned to a specific section, the service or procedure itself is not limited to use only by that specialty group (see paragraphs 2 and 3 under “Instructions for Use of the CPT® Codebook” on page xiv of the AMA CPT book). Additionally, the procedures and services listed throughout the book are for use by any qualified physician or other qualified health care professional or entity (e.g., hospitals, laboratories, or home health agencies).

The use of the phrase “physician or other qualified health care professional” (OQHCP) was adopted to identify a health care provider other than a physician. This type of provider is further described in CPT as an individual “qualified by education, training, licensure/regulation (when applicable), and facility privileging (when applicable).” State licensure guidelines determine the scope of practice and an OQHCP must practice within these guidelines, even if more restrictive than the CPT guidelines. The OQHCP may report services independently or under incident-to guidelines. The professionals within this definition are separate from “clinical staff” and are able to practice independently. CPT defines clinical staff as “a person who works under the supervision of a physician or OQHCP and who is allowed, by law, regulation, and facility policy to perform or assist in the performance of a specified professional service, but who does not individually report that professional service.” Keep in mind that there may be other policies or guidance that can affect who may report a specific service.

Types of E/M Services

When approaching E/M, the first choice that a provider must make is what type of code to use. The following tables outline the E/M codes for different levels of care for:

- Office or other outpatient services—new patient
- Office or other outpatient services—established patient
- Hospital observation services—initial care, subsequent, and discharge
- Hospital inpatient services—initial care, subsequent, and discharge
- Observation or inpatient care (including admission and discharge services)
- Consultations—office or other outpatient
- Consultations—inpatient
- Emergency department services
- Critical care
- Nursing facility—initial services
- Nursing facility—subsequent services
- Nursing facility—discharge and annual assessment
- Domiciliary, rest home, or custodial care—new patient
- Domiciliary, rest home, or custodial care—established patient
- Home services—new patient
- Home services—established patient

- Newborn care services
- Neonatal and pediatric interfacility transport
- Neonatal and pediatric critical care—inpatient
- Neonate and infant intensive care services—initial and continuing
- Care management

The specifics of the code components that determine code selection are listed in the table and discussed in the next section. Before a level of service is decided upon, the correct type of service is identified.

A new patient is a patient who has not received any face-to-face professional services from the physician or OQHCP within the past three years. An established patient is a patient who has received face-to-face professional services from the physician or OQHCP within the past three years. In the case of group practices, if a physician or OQHCP of the exact same specialty or subspecialty has seen the patient within three years, the patient is considered established.

If a physician or OQHCP is on call or covering for another physician or OQHCP, the patient’s encounter is classified as it would have been by the physician or OQHCP who is not available. Thus, a locum tenens physician or OQHCP who sees a patient on behalf of the patient’s attending physician or OQHCP may not bill a new patient code unless the attending physician or OQHCP has not seen the patient for any problem within three years.

Office or other outpatient services are E/M services provided in the physician or OQHCP office, the outpatient area, or other ambulatory facility. Until the patient is admitted to a health care facility, he/she is considered to be an outpatient. Hospital observation services are E/M services provided to patients who are designated or admitted as “observation status” in a hospital.

Codes 99218-99220 are used to indicate initial observation care. These codes include the initiation of the observation status, supervision of patient care including writing orders, and the performance of periodic reassessments. These codes are used only by the provider “admitting” the patient for observation.

Codes 99234-99236 are used to indicate evaluation and management services to a patient who is admitted to and discharged from observation status or hospital inpatient on the same day. If the patient is admitted as an inpatient from observation on the same day, use the appropriate level of Initial Hospital Care (99221-99223).

Code 99217 indicates discharge from observation status. It includes the final physical examination of the patient, instructions, and preparation of the discharge records. It should not be used when admission and discharge are on the same date of service. As mentioned above, report codes 99234-99236 to appropriately describe same day observation services.

If a patient is in observation longer than one day, subsequent observation care codes 99224-99226 should be reported. If the patient is discharged on the second day, observation discharge code 99217 should be reported. If the patient status is changed to inpatient on a subsequent date, the appropriate inpatient code, 99221-99233, should be reported.

Initial hospital care is defined as E/M services provided during the first hospital inpatient encounter with the patient by the admitting provider. (If a physician other than the admitting physician performs the initial inpatient encounter, refer to consultations or subsequent hospital care in the CPT book.) Subsequent hospital care includes all follow-up encounters with the patient by all physicians or OQHCP. As there may only be one admitting physician, HCPCS Level II modifier AI Principal physician of record, should be appended to the initial hospital care code by the attending physician or OQHCP.

A consultation is the provision of a physician or OQHCP’s opinion or advice about a patient for a specific problem at the request of another physician or other appropriate source. CPT also states that a consultation may be performed when a physician or OQHCP is determining whether to accept the transfer of patient care at the request of another physician or