

7. Diseases of the Circulatory System (390-459)

422 Acute myocarditis

EXCLUDES acute rheumatic myocarditis (391.2)

DEF: Acute inflammation of the muscular walls of the heart (myocardium).

422.0 Acute myocarditis in diseases classified elsewhere

MCC

Code first underlying disease, as:

myocarditis (acute):
influenzal (487.8)
tuberculous (017.9)

EXCLUDES myocarditis (acute) (due to):
aseptic, of newborn (074.23)
Coxsackie (virus) (074.23)
diphtheritic (032.82)
meningococcal infection (036.43)
syphilitic (093.82)
toxoplasmosis (130.3)

CC Exd: 391.2, 398.0, 422.0-422.99, 429.0, 429.71-429.79, 459.89-459.9

422.9 Other and unspecified acute myocarditis

422.90 Acute myocarditis, unspecified

MCC HIV

Acute or subacute (interstitial) myocarditis

CC Exd: See code: 422.0

422.91 Idiopathic myocarditis

MCC HIV

Myocarditis (acute or subacute):

Fiedler's
giant cell
isolated (diffuse) (granulomatous)
nonspecific granulomatous

CC Exd: See code: 422.0

422.92 Septic myocarditis

MCC HIV

Myocarditis, acute or subacute:

pneumococcal
staphylococcal

Use additional code to identify infectious organism [e.g., *Staphylococcus* 041.1]

EXCLUDES myocarditis, acute or subacute:
in bacterial diseases classified elsewhere (422.0)
streptococcal (391.2)

CC Exd: See code 422.0

422.93 Toxic myocarditis

MCC HIV

DEF: Inflammation of the heart muscle due to an adverse reaction to certain drugs or chemicals reaching the heart through the bloodstream.

CC Exd: See code: 422.0

422.99 Other

MCC HIV

CC Exd: See code: 422.0

423 Other diseases of pericardium

EXCLUDES that specified as rheumatic (393)

423.0 Hemopericardium

CC

DEF: Blood in the pericardial sac (pericardium).

CC Exd: 423.0-423.9, 459.89-459.9

423.1 Adhesive pericarditis

CC

Adherent pericardium	Pericarditis:
Fibrosis of pericardium	adhesive
Milk spots	obliterative
	Soldiers' patches

DEF: Two layers of serous pericardium adhere to each other by fibrous adhesions.

CC Exd: See code: 423.0

423.2 Constrictive pericarditis

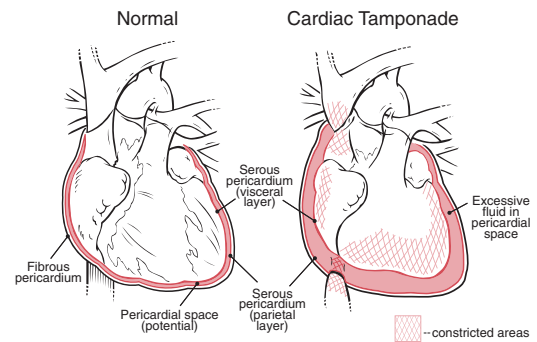
CC

Concato's disease
Pick's disease of heart (and liver)

DEF: Inflammation identified by a rigid, thickened and sometimes calcified pericardium; ventricles of the heart not adequately filled; congestive heart failure may result.

CC Exd: See code: 423.0

Cardiac Tamponade



423.3 Cardiac tamponade

CC

Code first the underlying cause

DEF: Life-threatening condition in which fluid or blood accumulates between the muscle of the heart (myocardium) and the outer sac (pericardium), resulting in compression of the heart, which decreases cardiac output.

CC Exd: 074.21, 093.81, 391.0, 393, 420.0-420.99, 423.3-423.9, 459.89-459.9

AHA: 4Q, '07, 86, 87

423.8 Other specified diseases of pericardium

CC

Calcification	} of pericardium
Fistula	

CC Exd: See code: 423.3

AHA: 2Q, '89, 12

423.9 Unspecified disease of pericardium

CC

CC Exd: See code: 423.3

AHA: 1Q, '07, 11

424 Other diseases of endocardium

EXCLUDES bacterial endocarditis (421.0-421.9)

rheumatic endocarditis (391.1, 394.0-397.9)

syphilitic endocarditis (093.20-093.24)

424.0 Mitral valve disorders

Mitral (valve):

incompetence	} NOS of specified cause, except rheumatic
insufficiency	
regurgitation	

EXCLUDES mitral (valve):

disease (394.9)

failure (394.9)

stenosis (394.0)

the listed conditions:

specified as rheumatic (394.1)

unspecified as to cause but with mention of:

diseases of aortic valve (396.0-396.9)

mitral stenosis or obstruction (394.2)

AHA: 3Q, '06, 7; 2Q, '00, 16; 3Q, '98, 11; N-D, '87, 8; N-D, '84, 8

I34.8 Other nonrheumatic mitral valve disorders

I-10

424.1 Aortic valve disorders

Aortic (valve):

incompetence	} NOS of specified cause, except rheumatic
insufficiency	
regurgitation	
stenosis	

EXCLUDES hypertrophic subaortic stenosis (425.1)

that specified as rheumatic (395.0-395.9)

that of unspecified cause but with mention of diseases of mitral valve (396.0-396.9)

AHA: 4Q, '08, 179; 4Q, '88, 8; N-D, '87, 8

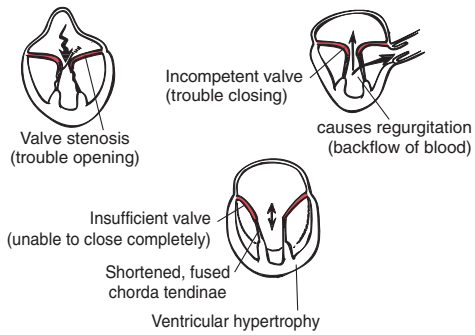
424.2 Tricuspid valve disorders, specified as nonrheumatic

Tricuspid valve:

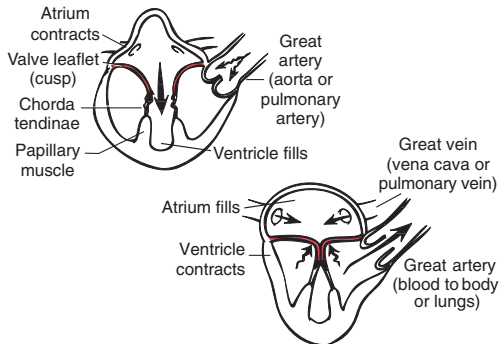
incompetence	} of specified cause, except rheumatic
insufficiency	
regurgitation	
stenosis	

EXCLUDES rheumatic or of unspecified cause (397.0)

Heart Valve Disorders



Normal Heart Valve Function



424.3 Pulmonary valve disorders

Pulmonic: incompetence NOS
 Pulmonic: regurgitation NOS
 insufficiency NOS stenosis NOS

EXCLUDES that specified as rheumatic (397.1)

424.9 Endocarditis, valve unspecified

424.90 Endocarditis, valve unspecified, unspecified cause

Endocarditis (chronic):
 NOS
 nonbacterial thrombotic

Valvular:
 incompetence
 insufficiency
 regurgitation
 stenosis } of unspecified valve,
 unspecified cause

Valvulitis (chronic)
CC Excl: 424.90-424.99, 459.89-459.9
I38 Endocarditis valve unspecified

424.91 Endocarditis in diseases classified elsewhere

Code first underlying disease as:
 atypical verrucous endocarditis [Libman-Sacks] (710.0)
 disseminated lupus erythematosus (710.0)
 tuberculosis (017.9)

EXCLUDES syphilitic (093.20-093.24)
CC Excl: See code: 424.90

424.99 Other

Any condition classifiable to 424.90 with specified cause, except rheumatic

EXCLUDES endocardial fibroelastosis (425.3) that specified as rheumatic (397.9)
CC Excl: See code: 424.90

425 Cardiomyopathy

INCLUDES myocardopathy
AHA: J-A, '85, 15

425.0 Endomyocardial fibrosis

CC Excl: 398.91, 402.01, 402.11, 402.91, 404.01, 404.03, 404.11, 404.13, 404.91, 404.93, 414.00-414.07, 414.2-414.9, 425.0-425.9, 426.10-426.13, 426.50-426.54, 426.81-426.89, 427.31-427.42, 427.60-427.89, 428.0-428.1, 428.9, 459.89-459.9, 746.86, 785.0-785.1, 785.50-785.51

425.1 Hypertrophic obstructive cardiomyopathy

Hypertrophic subaortic stenosis (idiopathic)
DEF: Cardiomyopathy marked by left ventricle hypertrophy, enlarged septum; results in obstructed blood flow.
CC Excl: See code: 425.0

425.2 Obscure cardiomyopathy of Africa

Becker's disease
 Idiopathic mural endomyocardial disease
CC Excl: See code: 425.0

425.3 Endocardial fibroelastosis

Elastomyofibrosis
DEF: A condition marked by left ventricle hypertrophy and conversion of the endocardium into a thick fibroelastic coat; capacity of the ventricle may be reduced, but is often increased.
CC Excl: See code: 425.0

425.4 Other primary cardiomyopathies

Cardiomyopathy: NOS	Cardiomyopathy: idiopathic
congestive	nonobstructive
constrictive	obstructive
familial	restrictive
hypertrophic	Cardiovascular collagenosis

CC Excl: See code: 425.0
AHA: ▶ 4Q, '09, 141; ◀ 1Q, '07, 20; 2Q, '05, 14; 1Q, '00, 22; 4Q, '97, 55; 2Q, '90, 19
TIP: For congestive cardiomyopathy, assign first a code for the CHF (category 428) if the treatment is directed toward the CHF.
I42.8 Other cardiomyopathies

425.5 Alcoholic cardiomyopathy

DEF: Heart disease as result of excess alcohol consumption.
CC Excl: See code: 425.0
AHA: S-O, '85, 15

425.7 Nutritional and metabolic cardiomyopathy

Code first underlying disease, as:
 amyloidosis (277.30-277.39)
 beriberi (265.0)
 cardiac glycogenosis (271.0)
 mucopolysaccharidosis (277.5)
 thyrotoxicosis (242.0-242.9)
EXCLUDES gouty tophi of heart (274.82)
CC Excl: See code 425.0

425.8 Cardiomyopathy in other diseases classified elsewhere

Code first underlying disease, as:
 Friedreich's ataxia (334.0)
 myotonia atrophica (359.21)
 progressive muscular dystrophy (359.1)
 sarcoidosis (135)
EXCLUDES cardiomyopathy in Chagas' disease (086.0)
CC Excl: See code 425.0
AHA: 2Q, '93, 9
I43 Cardiomyopathy in diseases classified elsewhere

425.9 Secondary cardiomyopathy, unspecified

CC Excl: See code 425.0

426 Conduction disorders

DEF: Disruption or disturbance in the electrical impulses that regulate heartbeats.

426.0 Atrioventricular block, complete

Third degree atrioventricular block
CC Excl: 426.0-427.5, 427.89, 459.89-459.9
AHA: 2Q, '06, 14
TIP: Assign if documentation indicates intermittent complete heart block.

426.1 Atrioventricular block, other and unspecified

TIP: Assign separate codes for each type of AV block documented.

426.10 Atrioventricular block, unspecified

Atrioventricular [AV] block (incomplete) (partial)
AHA: 2Q, '06, 14

426.11 First degree atrioventricular block

Incomplete atrioventricular block, first degree
 Prolonged P-R interval NOS
I44.0 Atrioventricular block first degree

14. Operations On The Musculoskeletal System (76-84)

81.55 Revision of knee replacement, not otherwise specified

Code also any removal of (cement) (joint) spacer (84.57)

EXCLUDES arthrodesis of knee (81.22)
revision of knee replacement, components specified (00.80-00.84)

AHA: 4Q, '05, 113; 2Q, '97, 10

81.56 Total ankle replacement

81.57 Replacement of joint of foot and toe

81.59 Revision of joint replacement of lower extremity, not elsewhere classified

81.6 Other procedures on spine

Note: Number of vertebrae

The vertebral spine consists of 25 vertebrae in the following order and number:

Cervical: C1 (atlas), C2 (axis), C3, C4, C5, C6, C7

Thoracic or Dorsal: T1, T2, T3, T4, T5, T6, T7, T8, T9, T10, T11, T12

Lumbar and Sacral: L1, L2, L3, L4, L5, S1

Coders should report only one code from the series

81.62-81.64 to show the total number of vertebrae fused on the patient.

Code also the level and approach of the fusion or refusion (81.00-81.08, 81.30-81.39)

DEF: A combined posterior and anterior fusion performed by a surgeon through one incision: lateral transverse, posterior, or anterior.

AHA: 4Q, '03, 99

81.62 Fusion or refusion of 2-3 vertebrae

AHA: ▶2Q, '09, 4-5; ◀2Q, '08, 14; 1Q, '08, 5; 1Q, '06, 12, 13; 4Q, '05, 123; 4Q, '03, 99

81.63 Fusion or refusion of 4-8 vertebrae

AHA: 1Q, '07, 20; 14Q, '03, 99-101

81.64 Fusion or refusion of 9 or more vertebrae

AHA: 4Q, '03, 99

81.65 Percutaneous vertebroplasty

Injection of bone void filler (cement) (polymethylmethacrylate) (PMMA) into the diseased or fractured vertebral body

EXCLUDES kyphoplasty (81.66)
percutaneous vertebral augmentation (81.66)

AHA: 2Q, '08, 15

81.66 Percutaneous vertebral augmentation

Arcoplasty

Insertion of inflatable balloon, bone tamp, or other device displacing (removing) (compacting) bone to create a space (cavity) (void) prior to the injection of bone void filler (cement) (polymethylmethacrylate) (PMMA) or other substance

Kyphoplasty

SKyphoplasty

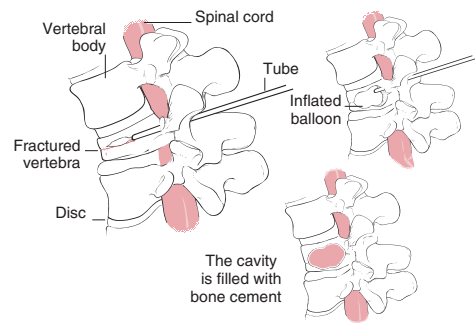
Spineoplasty

EXCLUDES percutaneous vertebroplasty (81.65)

AHA: 1Q, '07, 5, 7; 3Q, '06, 13; 4Q, '04, 126

TIP: Assign a separate code from subcategory 77.4 for bone biopsy, if performed with percutaneous vertebral augmentation.

Percutaneous Vertebral Augmentation



81.7 Arthroplasty and repair of hand, fingers, and wrist

INCLUDES arthroplasty of hand and finger with:
external traction or fixation
graft of bone (chips) or cartilage
internal fixation device or prosthesis

EXCLUDES operations on muscle, tendon, and fascia of hand (82.01-82.99)

DEF: Plastic surgery of hand, fingers and wrist joints.

81.71 Arthroplasty of metacarpophalangeal and interphalangeal joint with implant

81.72 Arthroplasty of metacarpophalangeal and interphalangeal joint without implant

AHA: 1Q, '93, 28

81.73 Total wrist replacement

81.74 Arthroplasty of carpocarpal or carpometacarpal joint with implant

81.75 Arthroplasty of carpocarpal or carpometacarpal joint without implant

AHA: 3Q, '93, 8

81.79 Other repair of hand, fingers, and wrist

81.8 Arthroplasty and repair of shoulder and elbow

INCLUDES arthroplasty of upper limb NEC with:
external traction or fixation
graft of bone (chips) or cartilage
internal fixation device or prosthesis

81.80 Total shoulder replacement

AHA: 2Q, '08, 5

81.81 Partial shoulder replacement

81.82 Repair of recurrent dislocation of shoulder

AHA: 3Q, '95, 15

81.83 Other repair of shoulder

Revision of arthroplasty of shoulder

AHA: 1Q, '02, 9; 4Q, '01, 51; 2Q, '00, 14; 3Q, '93, 5

TIP: Assign for SLAP (superior labral anterior posterior—glenoid labrum lesion) repair.

81.84 Total elbow replacement

Partial elbow replacement

81.85 Other repair of elbow

Arthrocentesis

