

CODE PATHWAYS FOR UROLOGY/NEPHROLOGY

Introduction

Congratulations on the purchase of the *2008 Code Pathways for Urology/Nephrology*. This laminated flip chart offers guidance in selecting appropriate CPT codes for 13 common nephrology surgery categories.

Code Pathways for Urology/Nephrology provides decision trees that lead coders through physician operative reports to the appropriate procedure code. Coders answer questions in the decision trees to determine the CPT codes that best describe the services provided. In most instances, the questions are simple yes/no queries, but in some cases, readers will be asked to select from modalities or other differentiators to reach the appropriate code.

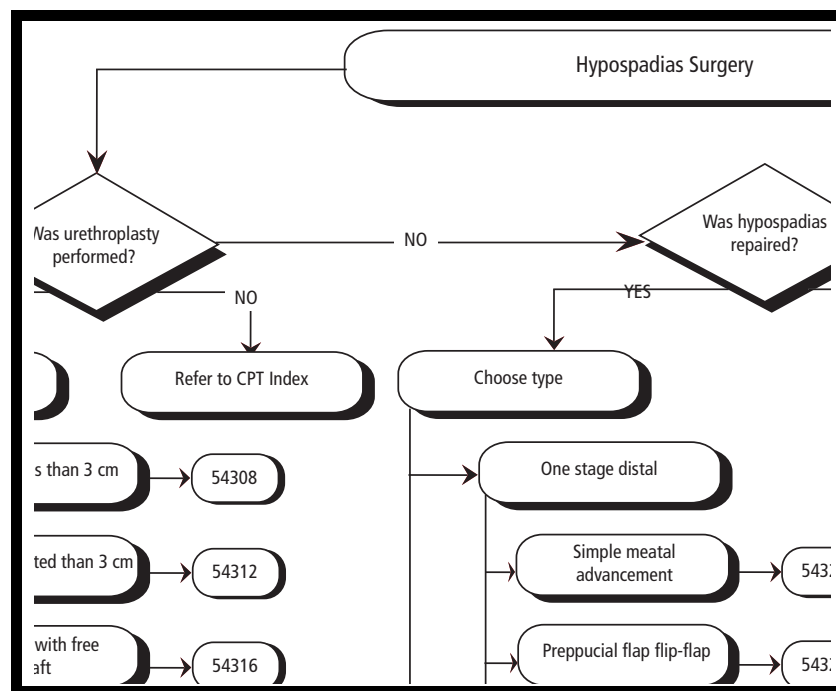
Using Pathways

To use *2008 Code Pathways Urology/Nephrology*, first determine which laminated flip chart is appropriate to the operative note. The charts available are:

- Nephrectomy
- Renal Laparoscopy Surgery
- Percutaneous Renal Surgery
- Adult Urinary Diversion
- Pediatric Urinary Diversion
- Adult Ureteroscopy
- Pediatric Ureteroscopy
- Hypospadias
- Transrectal Ultrasound/Biopsy Prostate

Begin at the top of the *Pathways* sheet, and answer the first question. For example, Hypospadias Surgery begins with the question, “Was urethroplasty performed?”

- Cystectomy
- Penile Surgery
- Prostatectomy
- Female Incontinence



In the course of answering a few questions, the reader can determine that the ablation of renal cysts is reported with CPT code 50541. The final answer may be derived after one question, or it may require as many as six or seven questions.

At times, the final answer may point to the notation, “Refer to CPT Index.” In these cases, either the information sought is from too broad a category to fit onto a *Pathways* sheet, or the immediate answer seems contradictory to previous responses in the decision tree. If the information is not too broad, the coder may benefit from starting at the beginning of the *Pathways* sheet and repeating the process to see if the same or a different path is chosen. If the second round again ends at “Refer to CPT Index” rather than a different answer, consult the CPT book.

Code Pathways for Urology/Nephrology is an educational device for visual learners and a time-saving tool for seasoned coders who have a strong foundation in the coding rules of their specialty. It is not intended to replace a CPT book or *Coding Companion for Urology/Nephrology* for more complex decision-making issues like modifier usage or follow-up day rules. *Pathways* was built using CPT and *CPT Assistant* guidelines, but coders are expected to reference individual payer rules and requirements to ensure claims are submitted properly.

Additional Pathways Data

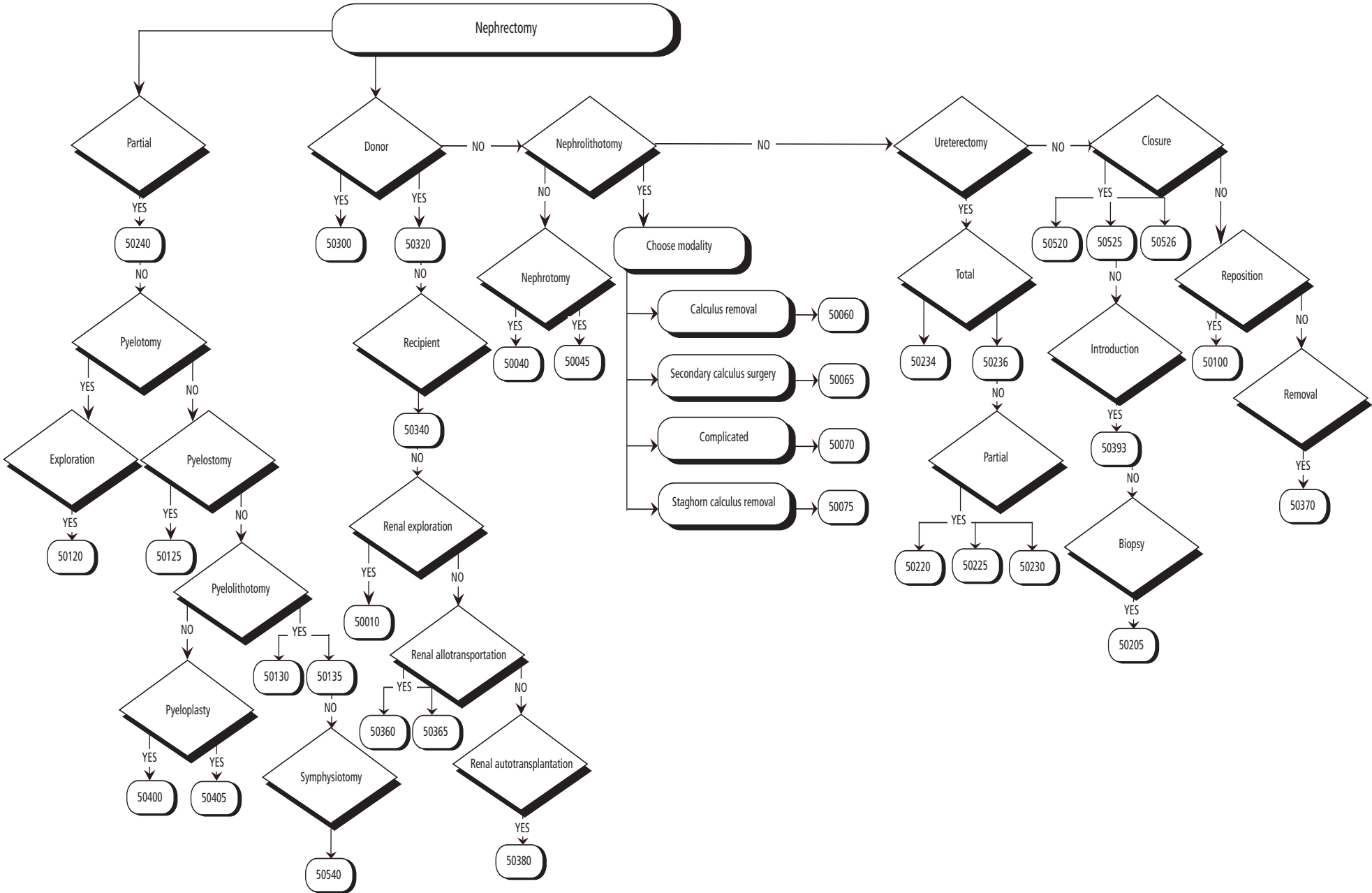
On the reverse side of the *Pathways* decision tree sheet is a list of ICD-9-CM diagnosis codes and descriptions commonly associated with that set of surgical procedures. The list may be abridged due to space constraints; consult your ICD-9-CM book for any diagnoses not represented there.

Definitions to terminology commonly seen on operative reports are also provided on the back, along with an anatomic illustration to further the user's understanding of procedure coding issues.

Improving Pathways

For *2008 Code Pathways for Urology/Nephrology* our intent was to capture the most common urology/nephrology procedures in simple-to-use decision tree formats. Ingenix welcomes suggestions of any *Pathways* that should be added to the urology/nephrology sequence or feedback on any changes that you feel should be made to the *Pathways* presented here. Please email your input to customerservice@ingenix.com or mail to Customer Service, *Code Pathways for Urology/Nephrology*, Ingenix, 2525 Lake Park Boulevard, Salt Lake City, Utah, 84120.

NEPHRECTOMY



Definitions

Calculus. Abnormal, stone-like concretion of calcium, cholesterol, mineral salts, or other substances that forms in any part of the body.

Hydronephrosis. Distension of the kidney caused by an accumulation of urine that cannot flow out due to an obstruction that may be caused by conditions such as kidney stones or vesicoureteral reflux.

Nephrectomy. Partial or total removal of the kidney that may be performed for indications such as irreparable kidney damage, renal cell carcinoma, trauma, congenital abnormalities, or transplant purposes.

Nephrolithotomy. Removal of a kidney stone or calculus through an incision made directly into the kidney.

Nephroptosis. Abnormal downward displacement or movement of the kidney.

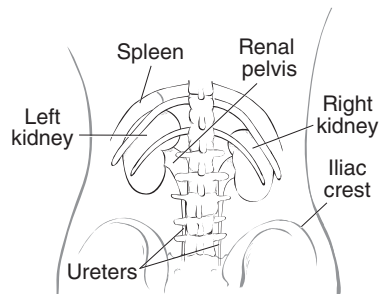
Nephrostomy. Placement of a stent, tube, or catheter that forms a passage from the exterior of the body into the renal pelvis or calyx, often for drainage of urine or an abscess, for exploration, or calculus extraction.

Nephrotomy. Incision into the body of the kidney.

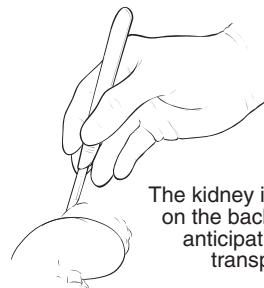
Pyelotomy. Incision or opening made into the renal pelvis.

ICD-9-CM

189.0	Malignant neoplasm of kidney, except pelvis	585.4	Chronic kidney disease, Stage IV (severe)
223.0	Benign neoplasm of kidney, except pelvis	585.5	Chronic kidney disease, Stage V
403.01	Hypertensive chronic kidney disease, malignant, with chronic kidney disease stage V or end stage renal disease	585.6	End stage renal disease
403.11	Hypertensive chronic kidney disease, benign, with chronic kidney disease stage V or end stage renal disease	591	Hydronephrosis
405.01	Secondary renovascular hypertension, malignant	592.0	Calculus of kidney
580.0	Acute glomerulonephritis with lesion of proliferative glomerulonephritis	592.1	Calculus of ureter
584.5	Acute renal failure with lesion of tubular necrosis	593.81	Vascular disorders of kidney
		619.0	Urinary-genital tract fistula, female
		753.11	Congenital single renal cyst
		753.13	Congenital polycystic kidney, autosomal dominant
		753.16	Congenital medullary cystic kidney
		753.17	Congenital medullary sponge kidney

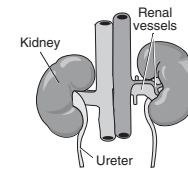


A donor nephrectomy (from a living donor) has been performed



The kidney is prepared on the backbench in anticipation of a transplant

One or both kidneys, renal vessels, and upper ureter are removed from cadaver donor (50300)



Donor kidney Kidney is placed in cold saline solution

Physician removes kidney and upper ureter from living donor (50320)

