

10. DISEASES OF THE GENITOURINARY SYSTEM (580-629)

NEPHRITIS, NEPHROTIC SYNDROME, AND NEPHROSIS (580-589)

EXCLUDES hypertensive renal disease (403.00-403.91)

✓4th 580 Acute glomerulonephritis

INCLUDES acute nephritis

DEF: Acute, severe inflammation in tuft of capillaries that filter the kidneys.

580.0 With lesion of proliferative glomerulonephritis

Acute (diffuse) proliferative glomerulonephritis
Acute poststreptococcal glomerulonephritis

580.4 With lesion of rapidly progressive glomerulonephritis

Acute nephritis with lesion of necrotizing glomerulitis

DEF: Acute glomerulonephritis; progresses to ESRD with diffuse epithelial proliferation.

✓5th 580.8 With other specified pathological lesion in kidney

580.81 Acute glomerulonephritis in diseases classified elsewhere

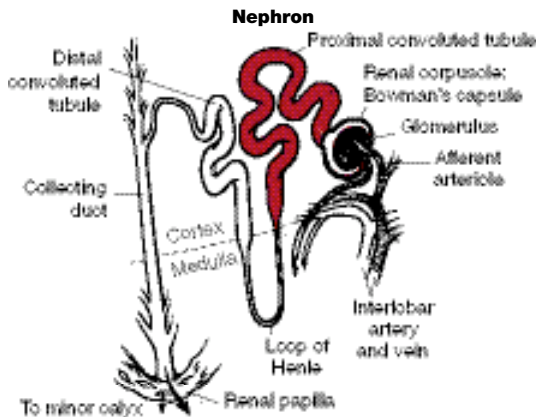
Code first underlying disease, as:
infectious hepatitis (070.0-070.9)
mumps (072.79)
subacute bacterial endocarditis (421.0)
typhoid fever (002.0)

580.89 Other

Glomerulonephritis, acute, with lesion of:
exudative nephritis
interstitial (diffuse) (focal) nephritis

580.9 Acute glomerulonephritis with unspecified pathological lesion in kidney

Glomerulonephritis:	} specified as acute
NOS	
hemorrhagic	
Nephritis	
Nephropathy	



✓4th 581 Nephrotic syndrome

DEF: Disease process marked by symptoms such as; extensive edema, notable proteinuria, hypoalbuminemia, and susceptibility to intercurrent infections.

581.0 With lesion of proliferative glomerulonephritis

581.1 With lesion of membranous glomerulonephritis

Epimembranous nephritis
Idiopathic membranous glomerular disease
Nephrotic syndrome with lesion of:
focal glomerulosclerosis
sclerosing membranous glomerulonephritis
segmental hyalinosis

581.2 With lesion of membranoproliferative glomerulonephritis

Nephrotic syndrome with lesion (of):
endothelial
hypocomplementemic persistent
lobular
mesangiocapillary
mixed membranous and proliferative } glomerulonephritis

DEF: Glomerulonephritis combined with clinical features of nephrotic syndrome; characterized by uneven thickening of glomerular capillary walls and mesangial cell increase; slowly progresses to ESRD.

581.3 With lesion of minimal change glomerulonephritis

Foot process disease Minimal change:
Lipoid nephrosis glomerulitis
Minimal change: nephrotic syndrome
glomerular disease

✓5th 581.8 With other specified pathological lesion in kidney

581.81 Nephrotic syndrome in diseases classified elsewhere

Code first underlying disease, as:
amyloidosis (277.3)
diabetes mellitus (250.4)
malaria (084.9)
polyarteritis (446.0)
systemic lupus erythematosus (710.0)

EXCLUDES nephrosis in epidemic hemorrhagic fever (078.6)

AHA: 30, '91, 8,12; S-0, '85, 3

581.89 Other

Glomerulonephritis with edema and lesion of:
exudative nephritis
interstitial (diffuse) (focal) nephritis

581.9 Nephrotic syndrome with unspecified pathological lesion in kidney

Glomerulonephritis with edema NOS
Nephritis:
nephrotic NOS
with edema NOS
Nephrosis NOS
Renal disease with edema NOS

✓4th 582 Chronic glomerulonephritis

INCLUDES chronic nephritis

DEF: Slow progressive type of nephritis characterized by inflammation of the capillary loops in the glomeruli of the kidney, which leads to renal failure.

582.0 With lesion of proliferative glomerulonephritis

Chronic (diffuse) proliferative glomerulonephritis

582.1 With lesion of membranous glomerulonephritis

Chronic glomerulonephritis:
membranous
sclerosing
Focal glomerulosclerosis
Segmental hyalinosis

AHA: S-0, '84, 16

V26.22 Aftercare following sterilization reversal
Fallopian insufflation following sterilization reversal
Sperm count following sterilization reversal

V26.29 Other investigation and testing
AHA: 2Q, '96, 9; N-D, '85, 15

V26.3 Genetic counseling and testing ✓ 5th
EXCLUDES fertility testing (V26.21)

V26.31 Testing for genetic disease carrier status

V26.32 Other genetic testing

V26.33 Genetic counseling

V26.4 General counseling and advice

V26.5 Sterilization status ✓ 5th
V26.51 Tubal ligation status SDx ♀
EXCLUDES infertility not due to previous tubal ligation (628.0-628.9)

V26.52 Vasectomy status SDx ♂

V26.8 Other specified procreative management

V26.9 Unspecified procreative management

V27 Outcome of delivery ✓ 4th
Note: This category is intended for the coding of the outcome of delivery on the mother's record.

AHA: 2Q, '91, 16
V27.0 Single liveborn M SDx ♀
AHA: 2Q, '03, 9; 2Q, '02, 10; 1Q, '01, 10; 3Q, '00, 5; 4Q, '98, 77; 4Q, '95, 59; 1Q, '92, 9

V27.1 Single stillborn M SDx ♀

V27.2 Twins, both liveborn M SDx ♀

V27.3 Twins, one liveborn and one stillborn M SDx ♀

V27.4 Twins, both stillborn M SDx ♀

V27.5 Other multiple birth, all liveborn M SDx ♀

V27.6 Other multiple birth, some liveborn M SDx ♀

V27.7 Other multiple birth, all stillborn M SDx ♀

V27.9 Unspecified outcome of delivery M SDx ♀
Single birth outcome to infant
Multiple birth unspecified

V28 Antenatal screening ✓ 4th
EXCLUDES abnormal findings on screening — code to findings
routine prenatal care (V22.0-V23.9)
AHA: 1Q, '04, 11

V28.0 Screening for chromosomal anomalies by amniocentesis M ♀

V28.1 Screening for raised alpha-fetoprotein levels in amniotic fluid M ♀

V28.2 Other screening based on amniocentesis M ♀

V28.3 Screening for malformation using ultrasonics ♀

V28.4 Screening for fetal growth retardation using ultrasonics ♀

V28.5 Screening for isoimmunization ♀

V28.6 Screening for Streptococcus B M ♀
AHA: 4Q, '97, 46

V28.8 Other specified antenatal screening ♀
AHA: 3Q, '99, 16

V28.9 Unspecified antenatal screening ♀

V29 Observation and evaluation of newborns and infants for suspected condition not found ✓ 4th
Note: This category is to be used for newborns, within the neonatal period, (the first 28 days of life) who are suspected of having an abnormal condition resulting from exposure from the mother or the birth process, but without signs or symptoms, and, which after examination and observation, is found not to exist.
AHA: 1Q, '00, 25; 4Q, '94, 47; 1Q, '94, 9; 4Q, '92, 21

V29.0 Observation for suspected infectious condition N PDx
AHA: 1Q, '01, 10

V29.1 Observation for suspected neurological condition N PDx

V29.2 Observation for suspected respiratory condition N PDx

V29.3 Observation for suspected genetic or metabolic condition N PDx
AHA: 4Q, '98, 59, 68

V29.8 Observation for other specified suspected condition N PDx
AHA: 2Q, '03, 15

V29.9 Observation for unspecified suspected condition N PDx
AHA: 1Q, '02, 6

LIVEBORN INFANTS ACCORDING TO TYPE OF BIRTH (V30-V39)

Note: These categories are intended for the coding of liveborn infants who are consuming health care [e.g., crib or bassinet occupancy].

The following fourth-digit subdivisions are for use with categories V30-V39:

- ✓ 5th **0 Born in hospital** N
- 1 Born before admission to hospital** N
- 2 Born outside hospital and not hospitalized**

The following two fifth-digits are for use with the fourth-digit .0, Born in hospital:

- 0 delivered without mention of cesarean delivery**
- 1 delivered by cesarean delivery**

AHA: 1Q, '01, 10

V30 Single liveborn ✓ 4th PDx
AHA: 2Q, '03, 9; 4Q, '98, 46, 59; 1Q, '94, 9; For code V30.00: 1Q, '04, 8, 16; 4Q, '03, 68

V31 Twin, mate liveborn ✓ 4th PDx
AHA: 3Q, '92, 10

V32 Twin, mate stillborn ✓ 4th PDx

V33 Twin, unspecified ✓ 4th PDx

V34 Other multiple, mates all liveborn ✓ 4th PDx

V35 Other multiple, mates all stillborn ✓ 4th PDx

V36 Other multiple, mates live- and stillborn ✓ 4th PDx

V37 Other multiple, unspecified ✓ 4th PDx

V39 Unspecified ✓ 4th PDx

PERSONS WITH A CONDITION INFLUENCING THEIR HEALTH STATUS (V40-V49)

Note: These categories are intended for use when these conditions are recorded as “diagnoses” or “problems.”

V40 Mental and behavioral problems ✓ 4th

V40.0 Problems with learning

V40.1 Problems with communication [including speech]

V40.2 Other mental problems

V40.3 Other behavioral problems

V40.9 Unspecified mental or behavioral problem

V41 Problems with special senses and other special functions ✓ 4th

V41.0 Problems with sight

V41.1 Other eye problems

V41.2 Problems with hearing

V41.3 Other ear problems

V41.4 Problems with voice production

V41.5 Problems with smell and taste

¹ A code from the V30–V39 series may be sequenced before the V29 on the newborn medical record.

Abortion	Spontaneous Abortion (accidental) (early) (late) (miscarriage) (recurrent)				Spontaneous Abortion (accidental) (early) (late) (miscarriage) (recurrent)			
	Incomplete (part of the products of conception are retained)	Complete (all of the products of conception are expelled)	Complication following abor- tion (separate episodes of care)	Unspecified	Incomplete (part of the products of conception are retained)	Complete(all of the prod- ucts of con- ception are expelled)	Unspecified	Complication following abortion (sep- arate epi- sodes of care)
Without complication	634.91	634.92	634.90		635.91	635.92	635.90	
With complication of:								
Afibrinogenemia						635.12	635.10	639.1
Atrophy, acute yellow	634.71	634.72	634.70	639.8	635.71	635.72	635.70	639.8
Cardiac arrest	634.71	634.72	634.70	639.8	635.71	635.72	635.70	639.8
Cardiac failure	634.71	634.72	634.70	639.8	635.71	635.72	635.70	639.8
Cerebral anoxia	634.71	634.72	634.70	639.8	635.71	635.72	635.70	639.8
Circulatory collapse	634.51	634.52	634.50	639.5	635.51	635.52	635.50	639.5
Defibrination syndrome	634.11	634.12	634.10	639.1	635.11	635.12	635.10	639.1
Electrolyte imbalance	634.41	634.42	634.40	639.4	635.41	635.42	635.40	639.4
Embolism (any type)	634.61	634.62	634.60	639.6	635.61	635.62	635.60	639.6
Endometritis	634.01	634.02	634.00	639.0	635.01	635.02	635.00	639.0
Genital tract infection	634.01	634.02	634.00	639.0	635.01	635.02	635.00	639.0
Hemorrhage, delayed or excessive	634.11	634.12	634.10	639.1	635.11	635.12	635.10	639.1
Intravascular hemolysis	634.11	634.12	634.10	639.1	635.11	635.12	635.10	639.1
Laceration of:								
bladder	634.21	634.22	634.20	639.2	635.21	635.22	635.20	639.2
bowel	634.21	634.22	634.20	639.2	635.21	635.22	635.20	639.2
broad ligament	634.21	634.22	634.20	639.2	635.21	635.22	635.20	639.2
cervix	634.21	634.22	634.20	639.2	635.21	635.22	635.20	639.2
periurethral tissue	634.21	634.22	634.20	639.2	635.21	635.22	635.20	639.2
uterus	634.21	634.22	634.20	639.2	635.21	635.22	635.20	639.2
vagina	634.21	634.22	634.20	639.2	635.21	635.22	635.20	639.2
Metabolic disorder	634.41	634.42	634.40	639.4	635.41	635.42	635.40	639.4
Necrosis of liver	634.71	634.72	634.70	639.8	635.71	635.72	635.70	639.8
Oliguria	634.31	634.32	634.30	639.3	635.31	635.32	635.30	639.3
Other specified complication	634.71	634.72	634.70	639.8	635.71	635.72	635.70	639.8
Parametritis	634.01	634.02	634.00	639.0	635.01	635.02	635.00	639.0
Pelvic infection	634.01	634.02	634.00	639.0	635.01	635.02	635.00	639.0
Pelvic peritonitis	634.01	634.02	634.00	639.0	635.01	635.02	635.00	639.0
Perforation — see Abortion, by type, laceration								
Renal failure (acute)	634.31	634.32	634.30	639.3	635.31	635.32	635.30	639.3
Renal shutdown	634.31	634.32	634.30	639.3	635.31	635.32	635.30	639.3
Renal tubular necrosis	634.31	634.32	634.30	639.3	635.31	635.32	635.30	639.3
Salpingitis	634.01	634.02	634.00	639.0	635.01	635.02	635.00	639.0
Salpingo-oophoritis	634.01	634.02	634.00	639.0	635.01	635.02	635.00	639.0
Sepsis NOS	634.01	634.02	634.00	639.0	635.01	635.02	635.00	639.0
Septicemia NOS	634.01	634.02	634.00	639.0	635.01	635.02	635.00	639.0
Shock (postoperative)(septic)	634.51	634.52	634.50	639.5	635.51	635.52	635.50	639.5
Tear — see Abortion, by type, laceration								
Unspecified complications	634.81	634.82	634.80	639.9	635.81	635.82	635.80	639.9
Uremia	634.31	634.32	634.30	639.3	635.31	635.32	635.30	639.3
Urinary tract infection	634.71	634.72	634.70	639.8	635.71	635.72	635.70	639.8
UTI (urinary tract infection)	634.71	634.72	634.70	639.8	635.71	635.72	635.70	639.8

Abortion	Illegally Induced Abortion (criminal) (homicidal) (self- induced)				Unspecified Abortion — Retained products of conception following abortion, not classifiable elsewhere or not otherwise specified			
	Incomplete (part of the products of conception are retained)	Complete(all of the prod- ucts of con- ception are expelled)	Unspecified	Complication following abor- tion (separate episodes of care)	Incomplete (part of the products of conception are retained)	Complete(all of the prod- ucts of con- ception are expelled)	Unspecified	Complication following abortion (sep- arate epi- sodes of care)
Without complication	636.91	636.92	636.90		637.91	637.92	637.90	
With complication of:								
Afibrinogenemia	636.11	636.12	636.10	639.1	637.11	637.12	637.10	639.1
Atrophy, acute yellow	636.71	636.72	636.70	639.8	637.71	637.72	637.70	639.8
Cardiac arrest	636.71	636.72	636.70	639.8	637.71	637.72	637.70	639.8
Cardiac failure	636.71	636.72	636.70	639.8	637.71	637.72	637.70	639.8
Cerebral anoxia	636.71	636.72	636.70	639.8	637.71	637.72	637.70	639.8
Circulatory collapse	636.51	636.52	636.50	639.5	637.51	637.52	637.50	639.5
Defibrination syndrome	636.11	636.12	636.10	639.1	637.11	637.12	637.10	639.1
Electrolyte imbalance	636.41	636.42	636.40	639.4	637.41	637.42	637.40	639.4
Embolism (any type)	636.61	636.62	636.60	639.6	637.61	637.62	637.60	639.6
Endometritis	636.01	636.02	636.00	639.0	637.01	637.02	637.00	639.0
Genital tract infection	636.01	636.02	636.00	639.0	637.01	637.02	637.00	639.0
Hemorrhage, delayed or excessive	636.11	636.12	636.10	639.1	637.11	637.12	637.10	639.1
Intravascular hemolysis	636.11	636.12	636.10	639.1	637.11	637.12	637.10	639.1
Laceration of:								
bladder	636.21	636.22	636.20	639.2	637.21	637.22	637.20	639.2
bowel	636.21	636.22	636.20	639.2	637.21	637.22	637.20	639.2
broad ligament	636.21	636.22	636.20	639.2	637.21	637.22	637.20	639.2
cervix	636.21	636.22	636.20	639.2	637.21	637.22	637.20	639.2
periurethral tissue	636.21	636.22	636.20	639.2	637.21	637.22	637.20	639.2
uterus	636.21	636.22	636.20	639.2	637.21	637.22	637.20	639.2
vagina	636.21	636.22	636.20	639.2	637.21	637.22	637.20	639.2
Metabolic disorder	636.41	636.42	636.40	639.4	637.41	637.42	637.40	639.4

A

AAT (alpha-1 antitrypsin) deficiency 273.4

AAV (disease) (illness) (infection) — *see* Human immunodeficiency virus (disease) (illness) (infection)

Abactio — *see* Abortion, induced

Abactus venter — *see* Abortion, induced

Abarognosis 781.99

Abasia (-astasia) 307.9

- atactica 781.3
- choreic 781.3
- hysterical 300.11
- paroxysmal trepidant 781.3
- spastic 781.3
- trembling 781.3
- trepidans 781.3

Abderhalden-Kaufmann-Lignac syndrome (cystinosis) 270.0

Abdomen, abdominal — *see also* condition

- accordion 306.4
- acute 789.0 ■
- angina 557.1
- burst 868.00
- convulsive equivalent (*see also* Epilepsy) 345.5 ■
- heart 746.87
- muscle deficiency syndrome 756.79
- obstipum 756.79

Abdominalgia 789.0 ■

- periodic 277.3

Abduction contracture, hip or other joint — *see* Contraction, joint

Abercrombie's syndrome (amyloid degeneration) 277.3

Aberrant (congenital) — *see also* Malposition, congenital

- adrenal gland 759.1
- blood vessel NEC 747.60
 - arteriovenous NEC 747.60
 - cerebrovascular 747.81
 - gastrointestinal 747.61
 - lower limb 747.64
 - renal 747.62
 - spinal 747.82
 - upper limb 747.63
- breast 757.6
- endocrine gland NEC 759.2
- gastrointestinal vessel (peripheral) 747.61
- hepatic duct 751.69
- lower limb vessel (peripheral) 747.64
- pancreas 751.7
- parathyroid gland 759.2
- peripheral vascular vessel NEC 747.60
- pituitary gland (pharyngeal) 759.2
- renal blood vessel 747.62
- sebaceous glands, mucous membrane, mouth 750.26
- spinal vessel 747.82
- spleen 759.0
- testis (descent) 752.51
- thymus gland 759.2
- thyroid gland 759.2
- upper limb vessel (peripheral) 747.63

Aberratio

- lactis 757.6
- testis 752.51

Aberration — *see also* Anomaly

- chromosome — *see* Anomaly, chromosome(s)
- distantial 368.9
- mental (*see also* Disorder, mental, nonpsychotic) 300.9

Abetalipoproteinemia 272.5

Abionarce 780.79

Abiotrophy 799.89

Ablatio

- placentae — *see* Placenta, ablatio
- retinae (*see also* Detachment, retina) 361.9

Ablation

- pituitary (gland) (with hypofunction) 253.7
- placenta — *see* Placenta, ablatio
- uterus 621.8

Ablepharia, ablepharon, ablephary 743.62

Ablepsia — *see* Blindness

Ablepsy — *see* Blindness

Ablutomania 300.3

Abnormal, abnormality, abnormalities — *see also* Anomaly

- acid-base balance 276.4
 - fetus or newborn — *see* Distress, fetal
- adaptation curve, dark 368.63
- alveolar ridge 525.9
- amnion 658.9 ■
 - affecting fetus or newborn 762.9
- anatomical relationship NEC 759.9
- apertures, congenital, diaphragm 756.6
- auditory perception NEC 388.40
- autosomes NEC 758.5
 - 13 758.1
 - 18 758.2
 - 21 or 22 758.0
 - D₁ 758.1
 - E₃ 758.2
 - G 758.0
- ballistocardiogram 794.39
- basal metabolic rate (BMR) 794.7
- biosynthesis, testicular androgen 257.2
- blood level (of)
 - cobalt 790.6
 - copper 790.6
 - iron 790.6
 - lithium 790.6
 - magnesium 790.6
 - mineral 790.6
 - zinc 790.6
- blood pressure
 - elevated (without diagnosis of hypertension) 796.2
 - low (*see also* Hypotension) 458.9
 - reading (incidental) (isolated) (nonspecific) 796.3
- bowel sounds 787.5
- breathing behavior — *see* Respiration
- caloric test 794.19
- cervix (acquired) NEC 622.9
 - congenital 752.40
 - in pregnancy or childbirth 654.6 ■
 - causing obstructed labor 660.2 ■
 - affecting fetus or newborn 763.1
- chemistry, blood NEC 790.6
- chest sounds 786.7
- chorion 658.9 ■
 - affecting fetus or newborn 762.9
- chromosomal NEC 758.89
 - analysis, nonspecific result 795.2
 - autosomes (*see also* Abnormal, autosomes NEC) 758.5
 - fetal, (suspected) affecting management of pregnancy 655.1 ■
 - sex 758.81
- clinical findings NEC 796.4
- communication — *see* Fistula
- configuration of pupils 379.49
- coronary
 - artery 746.85
 - vein 746.9
- cortisol-binding globulin 255.8
- course, Eustachian tube 744.24
- dentofacial NEC 524.9
 - functional 524.50
 - specified type NEC 524.89
- development, developmental NEC 759.9
 - bone 756.9
 - central nervous system 742.9
- direction, teeth 524.30
- Dymia (*see also* Defect, coagulation) 286.9
- Ebstein 746.2
- echocardiogram 793.2
- echoencephalogram 794.01
- echogram NEC — *see* Findings, abnormal, structure
 - electrocardiogram (ECG) (EKG) 794.31
 - electroencephalogram (EEG) 794.02
 - electromyogram (EMG) 794.17
 - ocular 794.14
 - electro-oculogram (EOG) 794.12
 - electroretinogram (ERG) 794.11
 - erythrocytes 289.9
 - congenital, with perinatal jaundice 282.9 [774.0]

Abnormal, abnormality, abnormalities — *see*

also Anomaly — *continued*

- Eustachian valve 746.9
- excitability under minor stress 301.9
- fat distribution 782.9
- feces 787.7
- fetal heart rate — *see* Distress, fetal
- fetus NEC
 - affecting management of pregnancy — *see* Pregnancy, management affected by, fetal
 - causing disproportion 653.7 ■
 - affecting fetus or newborn 763.1
 - causing obstructed labor 660.1 ■
 - affecting fetus or newborn 763.1
- findings without manifest disease — *see* Findings, abnormal
- fluid
 - amniotic 792.3
 - cerebrospinal 792.0
 - peritoneal 792.9
 - pleural 792.9
 - synovial 792.9
 - vaginal 792.9
- forces of labor NEC 661.9 ■
 - affecting fetus or newborn 763.7
- form, teeth 520.2
- function studies
 - auditory 794.15
 - bladder 794.9
 - brain 794.00
 - cardiovascular 794.30
 - endocrine NEC 794.6
 - kidney 794.4
 - liver 794.8
 - nervous system
 - central 794.00
 - peripheral 794.19
 - oculomotor 794.14
 - pancreas 794.9
 - placenta 794.9
 - pulmonary 794.2
 - retina 794.11
 - special senses 794.19
 - spleen 794.9
 - thyroid 794.5
 - vestibular 794.16
- gait 781.2
 - hysterical 300.11
- gastrin secretion 251.5
- globulin
 - cortisol-binding 255.8
 - thyroid-binding 246.8
- glucagon secretion 251.4
- glucose 790.29
 - in pregnancy, childbirth, or puerperium 648.8 ■
 - fetus or newborn 775.0
 - non-fasting 790.29
- gravitational (G) forces or states 994.9
- hair NEC 704.2
- hard tissue formation in pulp 522.3
- head movement 781.0
- heart
 - rate
 - fetus, affecting liveborn infant
 - before the onset of labor 763.81
 - during labor 763.82
 - unspecified as to time of onset 763.83
 - intrauterine
 - before the onset of labor 763.81
 - during labor 763.82
 - unspecified as to time of onset 763.83
 - newborn
 - before the onset of labor 763.81
 - during labor 763.82
 - unspecified as to time of onset 763.83
 - shadow 793.2
 - sounds NEC 785.3
- hemoglobin (*see also* Disease, hemoglobin) 282.7
 - trait — *see* Trait, hemoglobin, abnormal
- hemorrhage, uterus — *see* Hemorrhage, uterus
- histology NEC 795.4