

EncoderPro for Desktop

Installation Instructions for CD-ROM

IMPORTANT: Please read these installation notes thoroughly before installing the Encoder Pro product you have purchased.

Global Bookmarks and Sticky Notes are automatically transferred from any version of 4.0 and newer (higher) to this newer version. Upon each user's initial launch, the user's personal Bookmarks and Sticky Notes are automatically migrated to this latest version. If you have an issue concerning this migration, please contact Technical Support at (800) 765-6797.

Note: If the previous upgrade (prior to version to 6.1.0) is closed inadvertently, the old and new versions may not correctly exist in the system. In addition, the User Data folder, Bookmarks and Sticky Notes may not be retained. Therefore, it is recommended to make a backup of the User Data folder, Bookmarks and Sticky Notes before starting the upgrade.

Follow the steps as outlined below to install EncoderPro for Desktop.

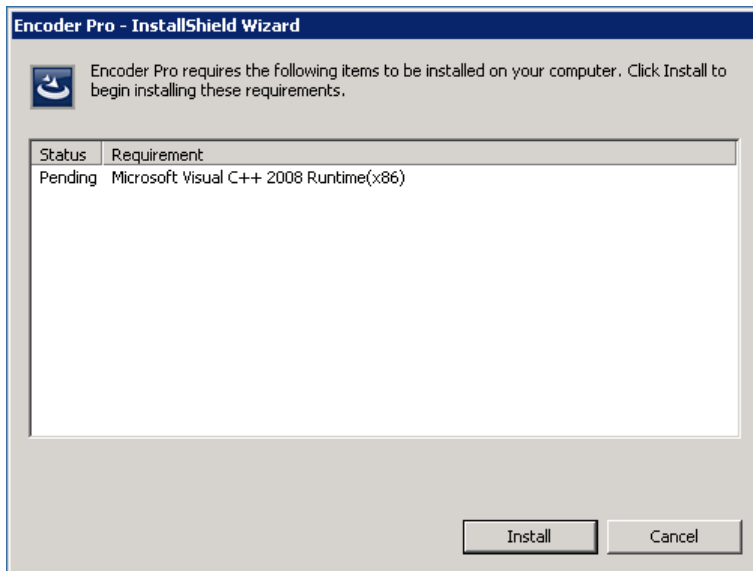
Close any other open applications.

Insert the CD into your CD-ROM drive.

The InstallShield program automatically begins the installation process.

Note: If at any time during the installation procedure you wish to stop the installation, you may click the **Cancel** button to exit the setup process.

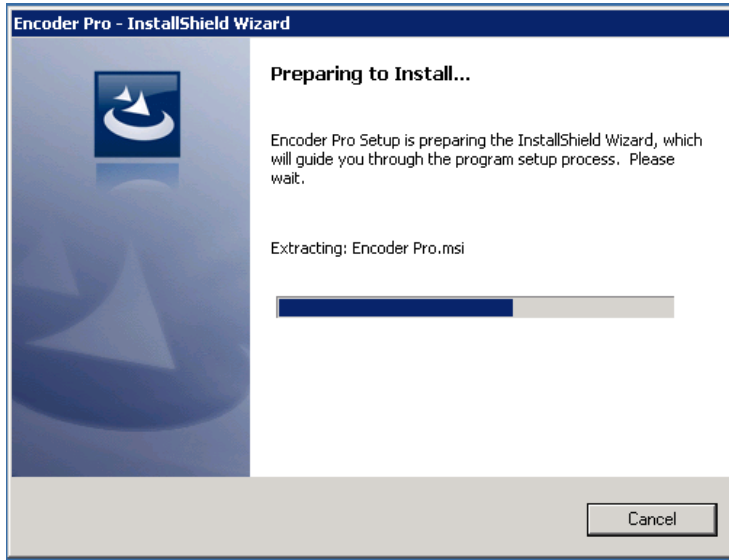
A message displays confirming the "Microsoft Visual C++ 2008 Runtime(x86)" installation procedure.



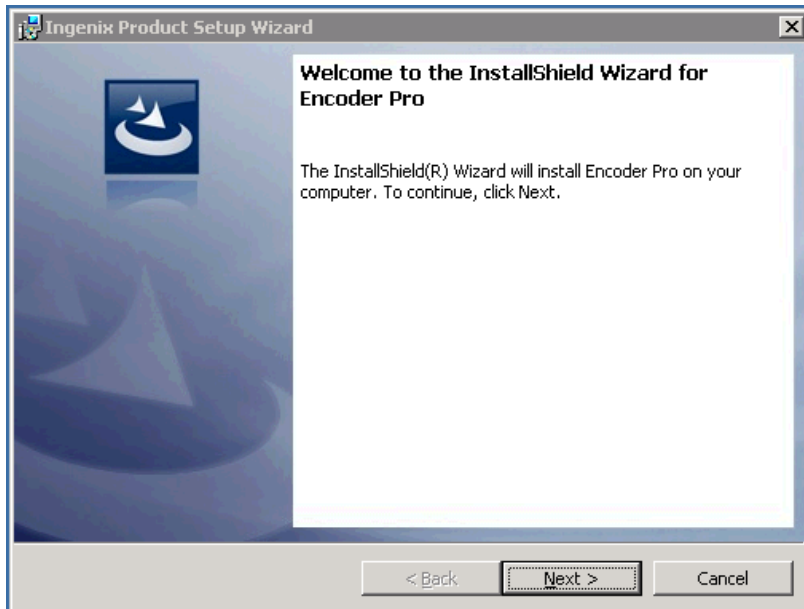
Click **Install**.

Note: If the prerequisite program has already been installed on the machine, this message will not be displayed.

After clicking **Install**, the prerequisite program will be installed

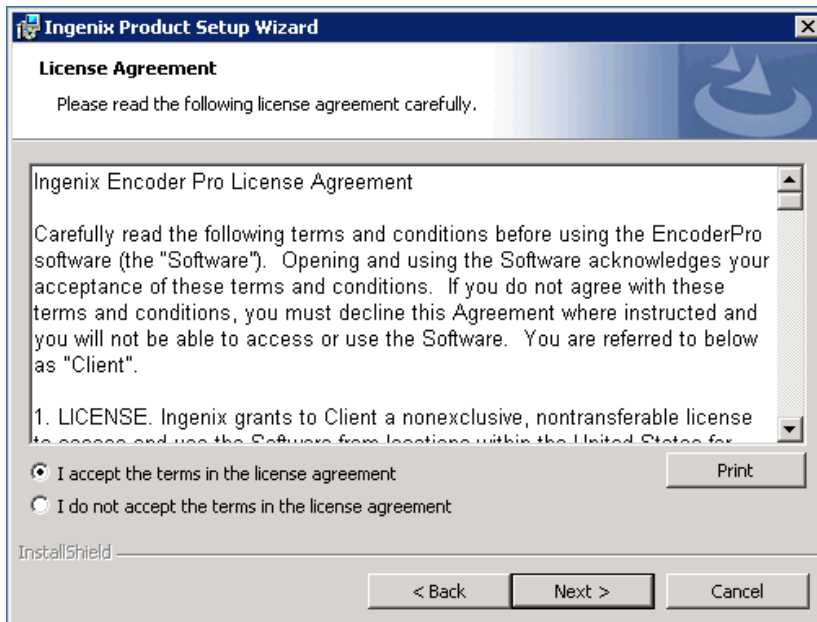


After the preparation process is completed a new message will be displayed confirming the installation procedure.



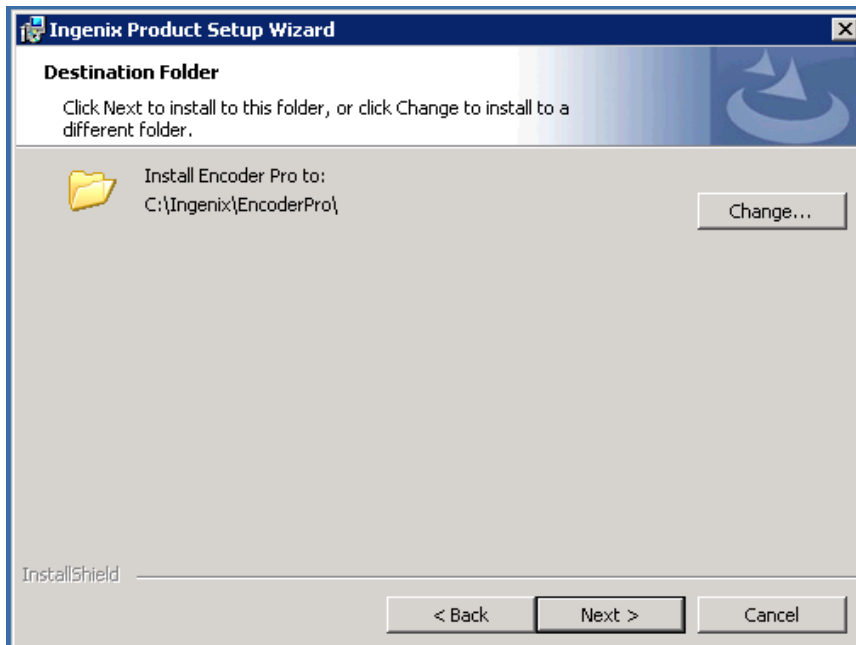
Click **Next** to continue.

You are shown the product's License Agreement, which we recommend you read.



Select the radio button "I accept the terms in the license agreement" and click **Next** to proceed with the installation. You may also click **Back** to go back to the previous screen, (You may also click **Cancel** to cancel and exit the installation process.)

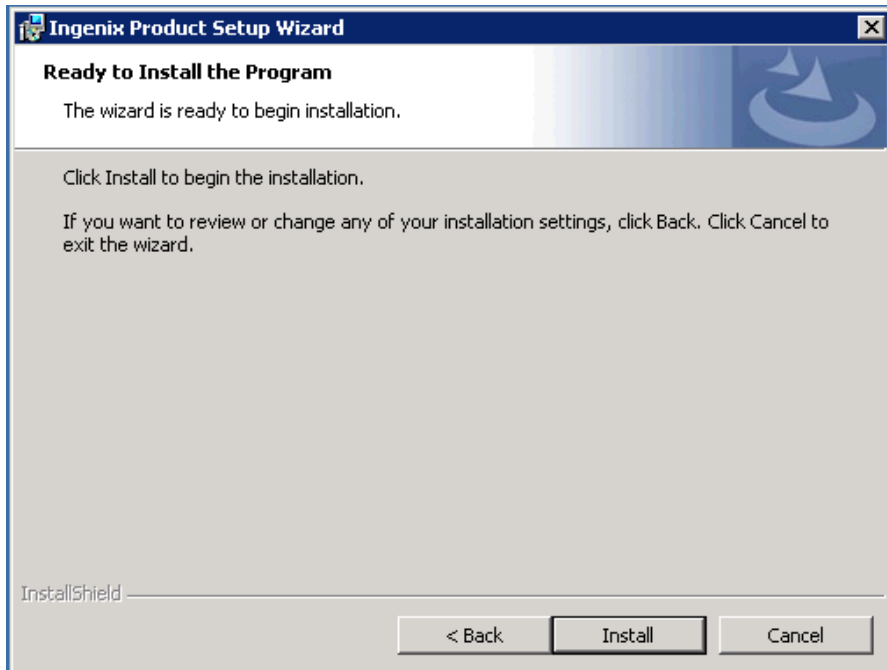
Next, you are then asked to choose the folder where you would like the program to reside on your computer's hard drive.



You may accept the default selection of "C:\Ingenix\EncoderPro\", or you may click the **Change** button to indicate a different location where to install the program. Click **Next** to continue with the installation. You may also click **Back** to go back to the previous screen.

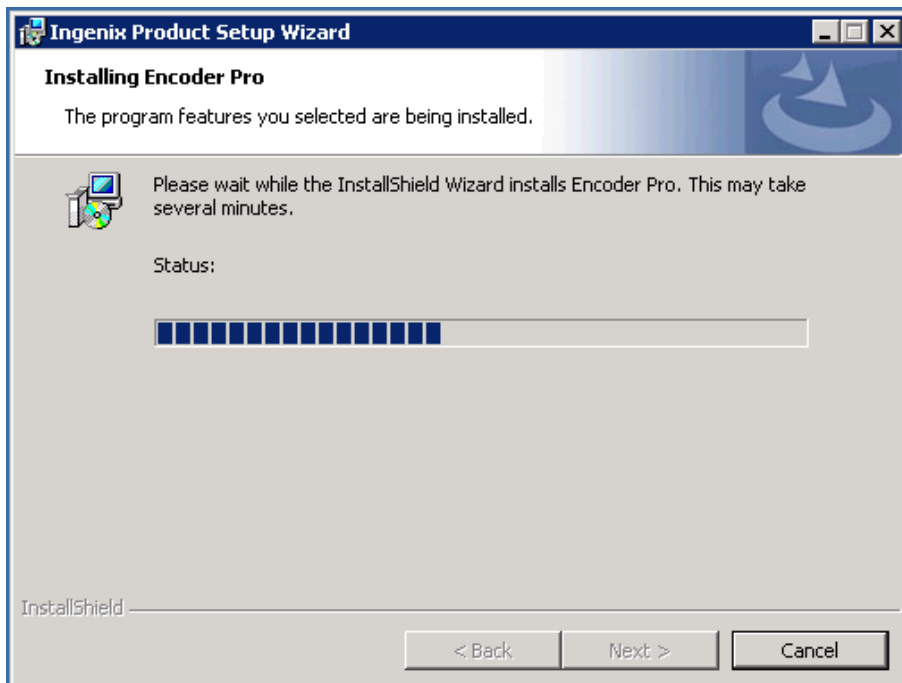
Note that the server and the client are installed under the selected directory.

Next, you are shown the “Ready to Install the Program” screen.

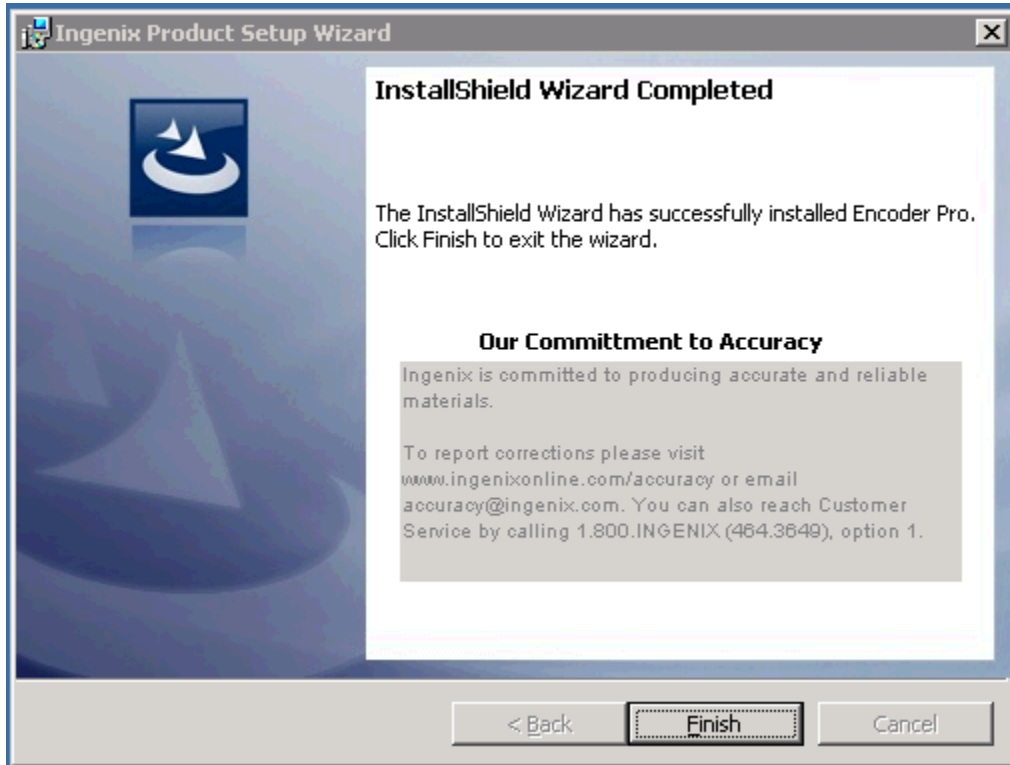


Click **Install** to proceed with the installation. You may also click **Back** to go back to the previous screen.

You are then shown the operations being performed and a status bar.



After completion, you are notified that the installation procedure has finished successfully. A message regarding Our Commitment to Accuracy is displayed.



Click **Finish** to complete the installation.

If you are uncertain that the installation process was completed, please call Technical Support at (800) 765-6797 before attempting to repeat the installation program.