

- 301.83 **Borderline personality disorder**
DEF: Personality disorder characterized by unstable moods, self-image, and interpersonal relationships; uncontrolled anger, impulsive and self-destructive acts, fears of abandonment, feelings of emptiness and boredom, recurrent suicide threats or self-mutilation.
F60.3 Borderline personality disorder I-10
- 301.84 **Passive-aggressive personality**
DEF: Pattern of procrastination and refusal to meet standards; introduce own obstacles to success and exploit failure.
- 301.89 **Other**
 Personality:
 eccentric
 "haltlose" type
 immature
 masochistic
 psychoneurotic
EXCLUDES *psychoinfantile personality (301.59)*
- 301.9 **Unspecified personality disorder**
 Pathological personality NOS
 Personality disorder NOS
 Psychopathic:
 constitutional state
 personality (disorder)
- ✓4th 302 **Sexual and gender identity disorders**
EXCLUDES *sexual disorder manifest in:
 organic brain syndrome (290.0-294.9, 310.0-310.9)
 psychosis (295.0-298.9)*
- 302.0 **Ego-dystonic sexual orientation**
 Ego-dystonic lesbianism
 Sexual orientation conflict disorder
EXCLUDES *homosexual pedophilia (302.2)*
- 302.1 **Zoophilia**
 Bestiality
DEF: A sociodeviant disorder marked by engaging in sexual intercourse with animals.
- 302.2 **Pedophilia**
DEF: A sociodeviant condition of adults characterized by sexual activity with children.
- 302.3 **Transvestic fetishism**
EXCLUDES *trans-sexualism (302.5)*
DEF: The desire to dress in clothing of opposite sex.
- 302.4 **Exhibitionism**
DEF: Sexual deviant behavior; exposure of genitals to strangers; behavior prompted by intense sexual urges and fantasies.
- ✓5th 302.5 **Trans-sexualism**
 Sex reassignment surgery status
EXCLUDES *transvestism (302.3)*
DEF: Gender identity disturbance; overwhelming desire to change anatomic sex, due to belief that individual is a member of the opposite sex.
- 302.50 **With unspecified sexual history**
- 302.51 **With asexual history**
- 302.52 **With homosexual history**
- 302.53 **With heterosexual history**
- 302.6 **Gender identity disorder in children**
 Feminism in boys
 Gender identity disorder NOS
EXCLUDES *gender identity disorder in adult (302.85)
 trans-sexualism (302.50-302.53)
 transvestism (302.3)*
- ✓5th 302.7 **Psychosexual dysfunction**
EXCLUDES *impotence of organic origin (607.84)
 normal transient symptoms from ruptured hymen
 transient or occasional failures of erection due to fatigue, anxiety, alcohol, or drugs*
- 302.70 **Psychosexual dysfunction, unspecified**
 Sexual dysfunction NOS
- 302.71 **Hypoactive sexual desire disorder**
EXCLUDES *decreased sexual desire NOS (799.81)*
- 302.72 **With inhibited sexual excitement**
 Female sexual arousal disorder
 Frigidity
 Impotence
 Male erectile disorder
- 302.73 **Female orgasmic disorder** ♀
- 302.74 **Male orgasmic disorder** ♂
- 302.75 **Premature ejaculation** ♂
- 302.76 **Dyspareunia, psychogenic** ♀
DEF: Difficult or painful sex due to psychosomatic state.
- 302.79 **With other specified psychosexual dysfunctions**
 Sexual aversion disorder
- ✓5th 302.8 **Other specified psychosexual disorders**
- 302.81 **Fetishism**
DEF: Psychosexual disorder noted for intense sexual urges and arousal precipitated by fantasies; use of inanimate objects, such as clothing, to stimulate sexual arousal, orgasm.
- 302.82 **Voyeurism**
DEF: Psychosexual disorder characterized by uncontrollable impulse to observe others, without their knowledge, who are nude or engaged in sexual activity.
- 302.83 **Sexual masochism**
DEF: Psychosexual disorder noted for need to achieve sexual gratification through humiliating or hurtful acts inflicted on self.
- 302.84 **Sexual sadism**
DEF: Psychosexual disorder noted for need to achieve sexual gratification through humiliating or hurtful acts inflicted on someone else.
- 302.85 **Gender identity disorder in adolescents or adults**
 Use additional code to identify sex reassignment surgery status (302.5)
EXCLUDES *gender identity disorder NOS (302.6)
 gender identity disorder in children (302.6)*
- 302.89 **Other**
 Frotteurism
 Nymphomania
 Satyriasis
- 302.9 **Unspecified psychosexual disorder**
 Paraphilia NOS
 Pathologic sexuality NOS
 Sexual deviation NOS
 Sexual disorder NOS

- ✓^{4th} **303 Alcohol dependence syndrome**
 Use additional code to identify any associated condition, as:
 alcoholic psychoses (291.0-291.9)
 drug dependence (304.0-304.9)
 physical complications of alcohol, such as:
 cerebral degeneration (331.7)
 cirrhosis of liver (571.2)
 epilepsy (345.0-345.9)
 gastritis (535.3)
 hepatitis (571.1)
 liver damage NOS (571.3)
EXCLUDES *drunkenness NOS (305.0)*
 The following fifth-digit subclassification is for use with category 303:
0 unspecified
1 continuous
2 episodic
3 in remission
AHA: 3Q, '95, 6; 2Q, '91, 9; 4Q, '88, 8; S-O, '86, 3
TIP: The patient has become physically addicted to alcohol and often experiences withdrawal symptoms when not drinking. Do not assign both 303.0X and 303.9X on the same encounter.
- § ✓^{5th} **303.0 Acute alcoholic intoxication** **CC 1**
 [0-3] Acute drunkenness in alcoholism
- § ✓^{5th} **303.9 Other and unspecified alcohol dependence**
 [0-3] Chronic alcoholism
 Dipsomania
AHA: 2Q, '02, 4; 2Q, '89, 9; **For code 303.90:** 2Q, '07, 6
F10.20 Alcohol dependence uncomplicated **I-10**
F10.21 Alcohol dependence in remission **I-10**
- ✓^{4th} **304 Drug dependence**
EXCLUDES *nondependent abuse of drugs (305.1-305.9)*
 The following fifth-digit subclassification is for use with category 304:
0 unspecified
1 continuous
2 episodic
3 in remission
AHA: 2Q, '91, 10; 4Q, '88, 8; S-O, '86, 3
- § ✓^{5th} **304.0 Opioid type dependence** **CC 1**
 [0-3] Heroin
 Meperidine
 Methadone
 Morphine
 Opium
 Opium alkaloids and their derivatives
 Synthetics with morphine-like effects
CC Excl: For code 304.01: 291.0-292.9, 303.00-305.03, 305.20-305.93, 790.3
AHA: 2Q, '06, 7
- § ✓^{5th} **304.1 Sedative, hypnotic or anxiolytic dependence** **CC 1**
 [0-3] Barbiturates
 Nonbarbiturate sedatives and tranquilizers with a similar effect:
 chlordiazepoxide
 diazepam
 glutethimide
 meprobamate
 methaqualone
CC Excl: For code 304.11: 291.0-292.9, 303.00-305.03, 305.20-305.93, 790.3
- § ✓^{5th} **304.2 Cocaine dependence** **CC 1**
 [0-3] Coca leaves and derivatives
CC Excl: For code 304.21: 291.0-292.9, 303.00-305.03, 305.20-305.93, 790.3
F14.20 Cocaine dependence uncomplicated **I-10**
- § ✓^{5th} **304.3 Cannabis dependence**
 [0-3] Hashish Marihuana
 Hemp
- § ✓^{5th} **304.4 Amphetamine and other psychostimulant dependence** **CC 1**
 [0-3] Methylphenidate Phenmetrazine
CC Excl: For code 304.41: 291.0-292.9, 303.00-305.03, 305.20-305.93, 790.3
- § ✓^{5th} **304.5 Hallucinogen dependence** **CC 1**
 [0-3] Dimethyltryptamine [DMT]
 Lysergic acid diethylamide [LSD] and derivatives
 Mescaline
 Psilocybin
CC Excl: For code 304.51: 291.0-292.9, 303.00-305.03, 305.20-305.93, 790.3
- § ✓^{5th} **304.6 Other specified drug dependence** **CC 1**
 [0-3] Absinthe addiction
 Glue sniffing
 Inhalant dependence
 Phencyclidine dependence
EXCLUDES *tobacco dependence (305.1)*
CC Excl: For code 304.61: 291.0-292.9, 303.00-305.03, 305.20-305.93, 790.3
- § ✓^{5th} **304.7 Combinations of opioid type drug with any other** **CC 1**
 [0-3] **CC Excl: For code 304.71:** 291.0-292.9, 303.00-305.03, 305.20-305.93, 790.3
AHA: M-A, '86, 12
- § ✓^{5th} **304.8 Combinations of drug dependence excluding opioid type drug** **CC 1**
 [0-3] **CC Excl: For code 304.81:** 291.0-292.9, 303.00-305.03, 305.20-305.93, 790.3
AHA: M-A, '86, 12
- § ✓^{5th} **304.9 Unspecified drug dependence** **CC 1**
 [0-3] Drug addiction NOS
 Drug dependence NOS
CC Excl: For code 304.91: 291.0-292.9, 303.00-305.03, 305.20-305.93, 790.3
AHA: For code 304.90: 4Q, '03, 103
- ✓^{4th} **305 Nondependent abuse of drugs**
 Note: Includes cases where a person, for whom no other diagnosis is possible, has come under medical care because of the maladaptive effect of a drug on which he is not dependent and that he has taken on his own initiative to the detriment of his health or social functioning.
EXCLUDES *alcohol dependence syndrome (303.0-303.9)*
drug dependence (304.0-304.9)
drug withdrawal syndrome (292.0)
poisoning by drugs or medicinal substances (960.0-979.9)
 The following fifth-digit subclassification is for use with codes 305.0, 305.2-305.9:
0 unspecified
1 continuous
2 episodic
3 in remission
AHA: 2Q, '91, 10; 4Q, '88, 8; S-O, '86, 3
- § ✓^{5th} **305.0 Alcohol abuse**
 [0-3] Drunkenness NOS
 Excessive drinking of alcohol NOS
 "Hangover" (alcohol)
 Inebriety NOS
EXCLUDES *acute alcohol intoxication in alcoholism (303.0)*
alcoholic psychoses (291.0-291.9)
AHA: 3Q, '96, 16
F10.10 Alcohol abuse uncomplicated **I-10**
- 305.1 Tobacco use disorder**
 Tobacco dependence
EXCLUDES *history of tobacco use (V15.82)*
smoking complicating pregnancy (649.0)
tobacco use disorder complicating pregnancy (649.0)
AHA: ▶1Q, '09, 16; ◀2Q, '96, 10; N-D, '84, 12
F17.210 Nicotine dependence cigarettes uncomplicated **I-10**

§ Requires fifth digit. Valid digits are in [brackets] under each code. See appropriate category for codes and definitions.

N Newborn Age: 0

P Pediatric Age: 0-17

M Maternity Age: 12-55

A Adult Age: 15-124

CC Major CC Condition

CC CC Condition

HIV HIV Related Dx

- § ✓ ^{5th} **305.2 Cannabis abuse**
[0-3] **F12.10** Cannabis abuse uncomplicated I-10
- § ✓ ^{5th} **305.3 Hallucinogen abuse**
[0-3] Acute intoxication from hallucinogens ["bad trips"]
LSD reaction
- § ✓ ^{5th} **305.4 Sedative, hypnotic or anxiolytic abuse**
[0-3]
- § ✓ ^{5th} **305.5 Opioid abuse**
[0-3]
- § ✓ ^{5th} **305.6 Cocaine abuse**
[0-3] **AHA: For code 305.60:** 1Q, '05, 6; 1Q, '93, 25
F14.10 Cocaine abuse uncomplicated I-10
- § ✓ ^{5th} **305.7 Amphetamine or related acting sympathomimetic abuse**
[0-3] **AHA: For code 305.70:** 2Q, '03, 10–11
- § ✓ ^{5th} **305.8 Antidepressant type abuse**
[0-3]
- § ✓ ^{5th} **305.9 Other, mixed, or unspecified drug abuse**
[0-3] Caffeine intoxication
Inhalant abuse
"Laxative habit"
Misuse of drugs NOS
Nonprescribed use of drugs or patent medicinals
Phencyclidine abuse
AHA: 3Q, '99, 20

✓ ^{4th} **306 Physiological malfunction arising from mental factors**

- INCLUDES** psychogenic:
physical symptoms
physiological manifestations } not involving tissue damage
- EXCLUDES** hysteria (300.11–300.19)
physical symptoms secondary to a psychiatric disorder classified elsewhere
psychic factors associated with physical conditions involving tissue damage classified elsewhere (316)
specific nonpsychotic mental disorders following organic brain damage (310.0–310.9)
- DEF:** Functional disturbances or interruptions due to mental or psychological causes; no tissue damage sustained in these conditions.

306.0 Musculoskeletal

- Psychogenic paralysis
- Psychogenic torticollis
- EXCLUDES** Gilles de la Tourette's syndrome (307.23)
paralysis as hysterical or conversion reaction (300.11)
tics (307.20–307.22)

306.1 Respiratory

- | | |
|---|---|
| Psychogenic:
air hunger
cough
hiccough | Psychogenic:
hyperventilation
yawning |
|---|---|
- EXCLUDES** psychogenic asthma (316 and 493.9)

306.2 Cardiovascular

- Cardiac neurosis
- Cardiovascular neurosis
- Neurocirculatory asthenia
- Psychogenic cardiovascular disorder
- EXCLUDES** psychogenic paroxysmal tachycardia (316 and 427.2)
- DEF:** Neurocirculatory asthenia: functional nervous and circulatory irregularities with palpitations, dyspnea, fatigue, rapid pulse, precordial pain, fear of effort, discomfort during exercise, anxiety; also called DaCosta's syndrome, Effort syndrome, Irritable or Soldier's Heart.
- AHA:** J-A, '85, 14

306.3 Skin

- Psychogenic pruritus
- EXCLUDES** psychogenic:
alopecia (316 and 704.00)
dermatitis (316 and 692.9)
eczema (316 and 691.8 or 692.9)
urticaria (316 and 708.0–708.9)

306.4 Gastrointestinal

- Aerophagy
- Cyclical vomiting, psychogenic
- Diarrhea, psychogenic
- Nervous gastritis
- Psychogenic dyspepsia
- EXCLUDES** cyclical vomiting NOS (536.2)
associated with migraine (346.2)
globus hystericus (300.11)
mucous colitis (316 and 564.9)
psychogenic:
cardiospasm (316 and 530.0)
duodenal ulcer (316 and 532.0–532.9)
gastric ulcer (316 and 531.0–531.9)
peptic ulcer NOS (316 and 533.0–533.9)
vomiting NOS (307.54)
- DEF:** Aerophagy: excess swallowing of air, usually unconscious; related to anxiety; results in distended abdomen or belching, often interpreted by the patient as a physical disorder.
- AHA:** 2Q, '89, 11

✓ ^{5th} **306.5 Genitourinary**

- EXCLUDES** enuresis, psychogenic (307.6)
frigidity (302.72)
impotence (302.72)
psychogenic dyspareunia (302.76)

306.50 Psychogenic genitourinary malfunction, unspecified

- 306.51 Psychogenic vaginismus** ♀
Functional vaginismus
DEF: Psychogenic response resulting in painful contractions of vaginal canal muscles; can be severe enough to prevent sexual intercourse.
- 306.52 Psychogenic dysmenorrhea** ♀

306.53 Psychogenic dysuria

- 306.59 Other**
AHA: M-A, '87, 11

306.6 Endocrine

306.7 Organs of special sense

- EXCLUDES** hysterical blindness or deafness (300.11)
psychophysical visual disturbances (368.16)

306.8 Other specified psychophysiological malfunction

- Bruxism
- Teeth grinding

306.9 Unspecified psychophysiological malfunction

- Psychophysiological disorder NOS
- Psychosomatic disorder NOS

✓ ^{4th} **307 Special symptoms or syndromes, not elsewhere classified**

Note: This category is intended for use if the psychopathology is manifested by a single specific symptom or group of symptoms which is not part of an organic illness or other mental disorder classifiable elsewhere.

- EXCLUDES** those due to mental disorders classified elsewhere
those of organic origin

307.0 Stuttering

- EXCLUDES** dysphasia ▶(784.59)◀
lispings or lalling (307.9)
retarded development of speech (315.31–315.39)
▶stuttering (fluency disorder) due to late effect of cerebrovascular accident (438.14)◀

§ Requires fifth digit. Valid digits are in [brackets] under each code. See appropriate category for codes and definitions.

307.1 Anorexia nervosa CC

EXCLUDES eating disturbance NOS (307.50)
feeding problem (783.3)
of nonorganic origin (307.59)
loss of appetite (783.0)
of nonorganic origin (307.59)

CC Excl: 306.4, 306.8–306.9, 307.1, 307.50–307.59, 309.22

AHA: 2Q, '06, 12; 4Q, '89, 11

TIP: Assign an additional code for any associated malnutrition.

✓ 5th 307.2 Tics

EXCLUDES nail-biting or thumb-sucking (307.9)
stereotypes occurring in isolation (307.3)
tics of organic origin (333.3)

DEF: Involuntary muscle response usually confined to the face, shoulders.

307.20 Tic disorder, unspecified

Tic disorder NOS

307.21 Transient tic disorder

307.22 Chronic motor or vocal tic disorder

307.23 Tourette's disorder

Motor-verbal tic disorder

DEF: Syndrome of facial and vocal tics in childhood; progresses to spontaneous or involuntary jerking, obscene utterances, other uncontrollable actions considered inappropriate.

307.3 Stereotypic movement disorder

Body-rocking
Head banging
Spasmus nutans
Stereotypes NOS

EXCLUDES tics (307.20–307.23)
of organic origin (333.3)

✓ 5th 307.4 Specific disorders of sleep of nonorganic origin

EXCLUDES narcolepsy (347.00–347.11)
organic hypersomnia (327.10–327.19)
organic insomnia (327.00–327.09)
those of unspecified cause (780.50–780.59)

307.40 Nonorganic sleep disorder, unspecified

307.41 Transient disorder of initiating or maintaining sleep

Adjustment insomnia	} associated with intermittent emotional reactions or conflicts
Hyposomnia	
Insomnia	
Sleeplessness	

307.42 Persistent disorder of initiating or maintaining sleep

Hyposomnia, insomnia, or sleeplessness associated with:
anxiety
conditioned arousal
depression (major) (minor)
psychosis
Idiopathic insomnia
Paradoxical insomnia
Primary insomnia
Psychophysiological insomnia

307.43 Transient disorder of initiating or maintaining wakefulness

Hypersomnia associated with acute or intermittent emotional reactions or conflicts

307.44 Persistent disorder of initiating or maintaining wakefulness

Hypersomnia associated with depression (major) (minor)
Insufficient sleep syndrome
Primary hypersomnia

EXCLUDES sleep deprivation (V69.4)

307.45 Circadian rhythm sleep disorder of nonorganic origin

307.46 Sleep arousal disorder

Night terror disorder
Night terrors
Sleep terror disorder
Sleepwalking
Somnambulism

DEF: Sleepwalking marked by extreme terror, panic, screaming, confusion; no recall of event upon arousal; term may refer to simply the act of sleepwalking.

307.47 Other dysfunctions of sleep stages or arousal from sleep

Nightmare disorder
Nightmares:
NOS
REM-sleep type
Sleep drunkenness

307.48 Repetitive intrusions of sleep

Repetitive intrusion of sleep with:
atypical polysomnographic features
environmental disturbances
repeated REM-sleep interruptions

307.49 Other

"Short-sleeper"
Subjective insomnia complaint

✓ 5th 307.5 Other and unspecified disorders of eating

EXCLUDES anorexia:
nervosa (307.1)
of unspecified cause (783.0)
overeating, of unspecified cause (783.6)
vomiting:
NOS (787.03)
cyclical (536.2)
associated with migraine (346.2)
psychogenic (306.4)

307.50 Eating disorder, unspecified

Eating disorder NOS

307.51 Bulimia nervosa CC

Overeating of nonorganic origin

DEF: Mental disorder commonly characterized by binge eating followed by self-induced vomiting; perceptions of being fat; and fear the inability to stop eating voluntarily.

CC Excl: 307.1, 307.50–307.51, 307.53–307.59

307.52 Pica

Perverved appetite of nonorganic origin

DEF: Compulsive eating disorder characterized by craving for substances, other than food; such as paint chips or dirt.

307.53 Rumination disorder

Regurgitation, of nonorganic origin, of food with reswallowing

EXCLUDES obsessional rumination (300.3)

307.54 Psychogenic vomiting

307.59 Other

Feeding disorder of infancy or early childhood of nonorganic origin

Infantile feeding disturbances	} of nonorganic origin
Loss of appetite	

307.6 Enuresis

Enuresis (primary) (secondary) of nonorganic origin

EXCLUDES enuresis of unspecified cause (788.3)

DEF: Involuntary urination past age of normal control; also called bedwetting; no trace to biological problem; focus on psychological issues.

307.7 Encopresis

Encopresis (continuous) (discontinuous) of nonorganic origin

EXCLUDES encopresis of unspecified cause (787.6)

DEF: Inability to control bowel movements; cause traced to psychological, not biological, problems.

- ✓5th 307.8 Pain disorders related to psychological factors
 - 307.80 Psychogenic pain, site unspecified
 - 307.81 Tension headache
 - EXCLUDES** headache:
 - NOS (784.0)
 - migraine (346.0-346.9)
 - syndromes (339.00-339.89)
 - tension type (339.10-339.12)
 - AHA: ▶4Q, '08, 103; ◀N-D, '85, 16
 - 307.89 Other
 - Code first to type or site of pain
 - EXCLUDES** pain disorder exclusively attributed to psychological factors (307.80)
 - psychogenic pain (307.80)
- 307.9 Other and unspecified special symptoms or syndromes, not elsewhere classified
 - Communication disorder NOS
 - Lisping
 - Masturbation
 - Hair plucking
 - Nail-biting
 - Lalling
 - Thumb-sucking
- ✓4th 308 Acute reaction to stress
 - INCLUDES** catastrophic stress
 - combat fatigue
 - gross stress reaction (acute)
 - transient disorders in response to exceptional physical or mental stress which usually subside within hours or days
 - EXCLUDES** adjustment reaction or disorder (309.0-309.9)
 - chronic stress reaction (309.1-309.9)
 - 308.0 Predominant disturbance of emotions
 - Anxiety
 - Emotional crisis
 - Panic state
 } as acute reaction to exceptional [gross] stress
 - 308.1 Predominant disturbance of consciousness
 - Fugues as acute reaction to exceptional [gross] stress
 - 308.2 Predominant psychomotor disturbance
 - Agitation states
 - Stupor
 } as acute reaction to exceptional [gross] stress
 - 308.3 Other acute reactions to stress
 - Acute situational disturbance
 - Acute stress disorder
 - EXCLUDES** prolonged posttraumatic emotional disturbance (309.81)
 - 308.4 Mixed disorders as reaction to stress
 - 308.9 Unspecified acute reaction to stress
- ✓4th 309 Adjustment reaction
 - INCLUDES** adjustment disorders
 - reaction (adjustment) to chronic stress
 - EXCLUDES** acute reaction to major stress (308.0-308.9)
 - neurotic disorders (300.0-300.9)
 - 309.0 Adjustment disorder with depressed mood
 - Grief reaction
 - EXCLUDES** affective psychoses (296.0-296.9)
 - neurotic depression (300.4)
 - prolonged depressive reaction (309.1)
 - psychogenic depressive psychosis (298.0)
 - F43.21 Adjustment disorder with depressed mood I-10
 - 309.1 Prolonged depressive reaction
 - EXCLUDES** affective psychoses (296.0-296.9)
 - brief depressive reaction (309.0)
 - neurotic depression (300.4)
 - psychogenic depressive psychosis (298.0)
- ✓5th 309.2 With predominant disturbance of other emotions
 - 309.21 Separation anxiety disorder
 - DEF: Abnormal apprehension by a child when physically separated from support environment; byproduct of abnormal symbiotic child-parent relationship.

- 309.22 Emancipation disorder of adolescence and early adult life
 - DEF: Adjustment reaction of late adolescence; conflict over independence from parental supervision; symptoms include difficulty in making decisions, increased reliance on parental advice, deliberate adoption of values in opposition of parents.
- 309.23 Specific academic or work inhibition
- 309.24 Adjustment disorder with anxiety
- 309.28 Adjustment disorder with mixed anxiety and depressed mood
 - Adjustment reaction with anxiety and depression
 - F43.23 Adjustment d/o w/mixed anxiety & depressed mood I-10
- 309.29 Other
 - Culture shock
- 309.3 Adjustment disorder with disturbance of conduct
 - Conduct disturbance
 - Destructiveness
 } as adjustment reaction
 - EXCLUDES** destructiveness in child (312.9)
 - disturbance of conduct NOS (312.9)
 - dyssocial behavior without manifest psychiatric disorder (V71.01-V71.02)
 - personality disorder with predominantly sociopathic or asocial manifestations (301.7)
- 309.4 Adjustment disorder with mixed disturbance of emotions and conduct
- ✓5th 309.8 Other specified adjustment reactions
 - 309.81 Posttraumatic stress disorder
 - Chronic posttraumatic stress disorder
 - Concentration camp syndrome
 - Posttraumatic stress disorder NOS
 - Post-traumatic stress disorder (PTSD)
 - EXCLUDES** acute stress disorder (308.3)
 - posttraumatic brain syndrome: nonpsychotic (310.2)
 - psychotic (293.0-293.9)
 - DEF: Preoccupation with traumatic events beyond normal experience; i.e., rape, personal assault, etc. also recurring flashbacks of trauma; symptoms include difficulty remembering, sleeping, or concentrating, and guilt feelings for surviving.
 - 309.82 Adjustment reaction with physical symptoms
 - 309.83 Adjustment reaction with withdrawal
 - Elective mutism as adjustment reaction
 - Hospitalism (in children) NOS
 - 309.89 Other
- 309.9 Unspecified adjustment reaction
 - Adaptation reaction NOS
 - Adjustment reaction NOS
- ✓4th 310 Specific nonpsychotic mental disorders due to brain damage
 - EXCLUDES** neuroses, personality disorders, or other nonpsychotic conditions occurring in a form similar to that seen with functional disorders but in association with a physical condition (300.0-300.9, 301.0-301.9)
 - 310.0 Frontal lobe syndrome
 - Lobotomy syndrome
 - Postleucotomy syndrome [state]
 - EXCLUDES** postcontusion syndrome (310.2)

310.1 Personality change due to conditions classified elsewhere

Cognitive or personality change of other type, of nonpsychotic severity
Organic psychosyndrome of nonpsychotic severity
Presbyophrenia NOS
Senility with mental changes of nonpsychotic severity

EXCLUDES ▶ *mild cognitive impairment (331.83)*
postconcussion syndrome (310.2)
signs and symptoms involving emotional state (799.21–799.29) ◀

DEF: Personality disorder caused by organic factors, such as brain lesions, head trauma, or cerebrovascular accident (CVA).

AHA: 2Q, '05, 6

310.2 Postconcussion syndrome

Postcontusion syndrome or encephalopathy
Posttraumatic brain syndrome, nonpsychotic
Status postcommotio cerebri

Use additional code to identify associated post-traumatic headache, if applicable (339.20–339.22)

EXCLUDES *frontal lobe syndrome (310.0)*
postencephalitic syndrome (310.8)
any organic psychotic conditions following head injury (293.0–294.0)

DEF: Nonpsychotic disorder due to brain trauma, causes symptoms unrelated to any disease process; symptoms include amnesia, serial headaches, rapid heartbeat, fatigue, disrupted sleep patterns, inability to concentrate.

AHA: 4Q, '90, 24

TIP: For treatment within 24 to 48 hours of the concussion, clarify with physician whether the concussion is still in the acute phase; if so, assign instead a code from 850.X subcategory.

310.8 Other specified nonpsychotic mental disorders following organic brain damage

Mild memory disturbance
Postencephalitic syndrome
Other focal (partial) organic psychosyndromes

EXCLUDES ▶ *memory loss of unknown cause (780.93)* ◀

310.9 Unspecified nonpsychotic mental disorder following organic brain damage

AHA: 4Q, '03, 103

311 Depressive disorder, not elsewhere classified

Depressive disorder NOS Depression NOS
Depressive state NOS

EXCLUDES *acute reaction to major stress with depressive symptoms (308.0)*

affective personality disorder (301.10–301.13)

affective psychoses (296.0–296.9)

brief depressive reaction (309.0)

depressive states associated with stressful events (309.0–309.1)

disturbance of emotions specific to childhood and adolescence, with misery and unhappiness (313.1)

mixed adjustment reaction with depressive symptoms (309.4)

neurotic depression (300.4)

prolonged depressive adjustment reaction (309.1)

psychogenic depressive psychosis (298.0)

AHA: 4Q, '03, 75

✓4th 312 Disturbance of conduct, not elsewhere classified

EXCLUDES *adjustment reaction with disturbance of conduct (309.3)*
drug dependence (304.0–304.9)
dysocial behavior without manifest psychiatric disorder (V71.01–V71.02)
personality disorder with predominantly sociopathic or asocial manifestations (301.7)
sexual deviations (302.0–302.9)

The following fifth-digit subclassification is for use with categories 312.0–312.2

0 unspecified
1 mild
2 moderate
3 severe

§ ✓5th 312.0 Undersocialized conduct disorder, aggressive type

[0–3] Aggressive outburst
Anger reaction
Unsocialized aggressive disorder

DEF: Mental condition identified by behaviors disrespectful of others' rights and of age-appropriate social norms or rules; symptoms include bullying, vandalism, verbal and physical abusiveness, lying, stealing, defiance.

§ ✓5th 312.1 Undersocialized conduct disorder, unaggressive type

[0–3] Childhood truancy, unsocialized
Solitary stealing
Tantrums

§ ✓5th 312.2 Socialized conduct disorder

[0–3] Childhood truancy, socialized
Group delinquency

EXCLUDES *gang activity without manifest psychiatric disorder (V71.01)*

✓5th 312.3 Disorders of impulse control, not elsewhere classified

312.30 Impulse control disorder, unspecified

312.31 Pathological gambling

312.32 Kleptomania

312.33 Pyromania

312.34 Intermittent explosive disorder

312.35 Isolated explosive disorder

312.39 Other

Trichotillomania

312.4 Mixed disturbance of conduct and emotions

Neurotic delinquency

EXCLUDES *compulsive conduct disorder (312.3)*

✓5th 312.8 Other specified disturbances of conduct, not elsewhere classified

312.81 Conduct disorder, childhood onset type

312.82 Conduct disorder, adolescent onset type

312.89 Other conduct disorder

Conduct disorder of unspecified onset

312.9 Unspecified disturbance of conduct

Delinquency (juvenile)

Disruptive behavior disorder NOS

✓4th 313 Disturbance of emotions specific to childhood and adolescence

EXCLUDES *adjustment reaction (309.0–309.9)*
emotional disorder of neurotic type (300.0–300.9)
masturbation, nail-biting, thumbsucking, and other isolated symptoms (307.0–307.9)

313.0 Overanxious disorder

Anxiety and fearfulness } of childhood and
Overanxious disorder } adolescence

EXCLUDES *abnormal separation anxiety (309.21)*
anxiety states (300.00–300.09)
hospitalism in children (309.83)
phobic state (300.20–300.29)

313.1 Misery and unhappiness disorder

EXCLUDES *depressive neurosis (300.4)*

§ Requires fifth digit. Valid digits are in [brackets] under each code. See category 312 for codes and definitions.

N Newborn Age: 0

P Pediatric Age: 0–17

M Maternity Age: 12–55

A Adult Age: 15–124

MCC Major CC Condition

CC CC Condition

HIV HIV Related Dx

- ✓5th 313.2 Sensitivity, shyness, and social withdrawal disorder**
EXCLUDES *infantile autism (299.0)*
schizoid personality (301.20-301.22)
schizophrenia (295.0-295.9)
- 313.21 Shyness disorder of childhood**
 Sensitivity reaction of childhood or adolescence
- 313.22 Inverted disorder of childhood**
 Social withdrawal } of childhood and
 Withdrawal reaction } adolescence
- 313.23 Selective mutism**
EXCLUDES *elective mutism as adjustment reaction (309.83)*
- 313.3 Relationship problems**
 Sibling jealousy
EXCLUDES *relationship problems associated with aggression, destruction, or other forms of conduct disturbance (312.0-312.9)*
- ✓5th 313.8 Other or mixed emotional disturbances of childhood or adolescence**
- 313.81 Oppositional defiant disorder**
DEF: Mental disorder of children noted for pervasive opposition, defiance of authority.
- 313.82 Identity disorder**
 Identity problem
DEF: Distress of adolescents caused by inability to form acceptable self-identity; uncertainty about career choice, sexual orientation, moral values.
- 313.83 Academic underachievement disorder**
- 313.89 Other** P
 Reactive attachment disorder of infancy or early childhood
- 313.9 Unspecified emotional disturbance of childhood or adolescence** P
 Mental disorder of infancy, childhood or adolescence NOS
- ✓4th 314 Hyperkinetic syndrome of childhood**
EXCLUDES *hyperkinesia as symptom of underlying disorder—code the underlying disorder*
TIP: These codes may be assigned for patients of any age.
- ✓5th 314.0 Attention deficit disorder**
 Adult
 Child
DEF: A behavioral disorder usually diagnosed at an early age; characterized by the inability to focus attention for a normal period of time.
- 314.00 Without mention of hyperactivity**
 Predominantly inattentive type
AHA: 1Q, '97, 8
- 314.01 With hyperactivity**
 Combined type
 Overactivity NOS
 Predominantly hyperactive/impulsive type
 Simple disturbance of attention with overactivity
AHA: 1Q, '97, 8
F90.1 ADHD predominantly hyperactive type I-10
- 314.1 Hyperkinesia with developmental delay**
 Developmental disorder of hyperkinesia
 Use additional code to identify any associated neurological disorder
- 314.2 Hyperkinetic conduct disorder**
 Hyperkinetic conduct disorder without developmental delay
EXCLUDES *hyperkinesia with significant delays in specific skills (314.1)*
- 314.8 Other specified manifestations of hyperkinetic syndrome**
- 314.9 Unspecified hyperkinetic syndrome**
 Hyperkinetic reaction of childhood or adolescence NOS
 Hyperkinetic syndrome NOS
- ✓4th 315 Specific delays in development**
EXCLUDES *that due to a neurological disorder (320.0-389.9)*
- ✓5th 315.0 Specific reading disorder**
- 315.00 Reading disorder, unspecified**
- 315.01 Alexia**
DEF: Lack of ability to understand written language; manifestation of aphasia.
- 315.02 Developmental dyslexia**
DEF: Serious impairment of reading skills unexplained in relation to general intelligence and teaching processes.
- 315.09 Other**
 Specific spelling difficulty
- 315.1 Mathematics disorder**
 Dyscalculia
- 315.2 Other specific learning difficulties**
 Disorder of written expression
EXCLUDES *specific arithmetical disorder (315.1)*
specific reading disorder (315.00-315.09)
- ✓5th 315.3 Developmental speech or language disorder**
- 315.31 Expressive language disorder**
 Developmental aphasia
 Word deafness
EXCLUDES *acquired aphasia (784.3)*
elective mutism (309.83, 313.0, 313.23)
- 315.32 Mixed receptive-expressive language disorder**
 Central auditory processing disorder
EXCLUDES *acquired auditory processing disorder (388.45)*
AHA: 2Q, '05, 5; 4Q, '96, 30
- 315.34 Speech and language developmental delay due to hearing loss**
AHA: 4Q, '07, 80, 81
- 315.39 Other**
 Developmental articulation disorder
 Dyslalia
 Phonological disorder
EXCLUDES *lisping and lalling (307.9)*
stammering and stuttering (307.0)
AHA: 3Q, '07, 7
- 315.4 Developmental coordination disorder**
 Clumsiness syndrome
 Dyspraxia syndrome
 Specific motor development disorder
- 315.5 Mixed development disorder**
AHA: 2Q, '02, 11
- 315.8 Other specified delays in development**
F88 Other disorders of psychological development I-10
- 315.9 Unspecified delay in development**
 Developmental disorder NOS
 Learning disorder NOS

316 Psychic factors associated with diseases classified elsewhere

Psychologic factors in physical conditions classified elsewhere

Use additional code to identify the associated physical condition, as:

psychogenic:

- asthma (493.9)
- dermatitis (692.9)
- duodenal ulcer (532.0-532.9)
- eczema (691.8, 692.9)
- gastric ulcer (531.0-531.9)
- mucous colitis (564.9)
- paroxysmal tachycardia (427.2)
- ulcerative colitis (556)
- urticaria (708.0-708.9)
- psychosocial dwarfism (259.4)

EXCLUDES physical symptoms and physiological malfunctions, not involving tissue damage, of mental origin (306.0-306.9)

MENTAL RETARDATION (317-319)

Use additional code(s) to identify any associated psychiatric or physical condition(s)

317 Mild mental retardation

- High-grade defect
- IQ 50-70
- Mild mental subnormality

F70 Mild mental retardation **I-10**

✓ 4th 318 Other specified mental retardation**318.0 Moderate mental retardation**

- IQ 35-49
- Moderate mental subnormality

318.1 Severe mental retardation

- IQ 20-34
- Severe mental subnormality

CC Excl: 318.1-318.2 **CC**

318.2 Profound mental retardation

- IQ under 20
- Profound mental subnormality

CC Excl: See code: 318.1 **CC**

319 Unspecified mental retardation

- Mental deficiency NOS
- Mental subnormality NOS

F79 Unspecified mental retardation **I-10**

6. DISEASES OF THE NERVOUS SYSTEM AND SENSE ORGANS (320-389)

INFLAMMATORY DISEASES OF THE CENTRAL NERVOUS SYSTEM (320-326)

4th **320 Bacterial meningitis** **MCC**
INCLUDES arachnoiditis
 leptomeningitis
 meningitis
 meningoencephalitis
 meningomyelitis
 pachymeningitis } bacterial

DEF: Bacterial infection causing inflammation of the lining of the brain and/or spinal cord.

AHA: J-F, '87, 6

320.0 Hemophilus meningitis **MCC**
 Meningitis due to Hemophilus influenzae [H. influenzae]

CC Excl: 003.21, 013.00-013.16, 036.0, 047.0-047.9, 049.0-049.1, 053.0, 054.72, 072.1, 090.42, 091.81, 094.2, 098.89, 100.81, 112.83, 114.2, 115.01, 115.11, 115.91, 130.0, 249.60-249.61, 249.80-249.91, 250.60-250.63, 250.80-250.93, 320.0-322.9, 349.89-349.9, 357.0

320.1 Pneumococcal meningitis **MCC**
CC Excl: See code: 320.0

320.2 Streptococcal meningitis **MCC**
CC Excl: See code: 320.0

320.3 Staphylococcal meningitis **MCC**
CC Excl: See code: 320.0

320.7 Meningitis in other bacterial diseases classified elsewhere **MCC**

Code first underlying disease, as:
 actinomycosis (039.8)
 listeriosis (027.0)
 typhoid fever (002.0)
 whooping cough (033.0-033.9)

EXCLUDES meningitis (in):
 epidemic (036.0)
 gonococcal (098.82)
 meningococcal (036.0)
 salmonellosis (003.21)
 syphilis:
 NOS (094.2)
 congenital (090.42)
 meningovascular (094.2)
 secondary (091.81)
 tuberculous (013.0)

CC Excl: See code: 320.0

5th **320.8 Meningitis due to other specified bacteria** **MCC**

320.81 Anaerobic meningitis **MCC**
 Bacteroides (fragilis)
 Gram-negative anaerobes
CC Excl: See code 320.0

320.82 Meningitis due to gram-negative bacteria, not elsewhere classified **MCC**
 Aerobacter aerogenes pneumoniae
 Escherichia coli [E. coli]
 Friedländer bacillus
 Klebsiella
 Proteus morgani
 Pseudomonas
EXCLUDES gram-negative anaerobes (320.81)
CC Excl: See code: 320.0

320.89 Meningitis due to other specified bacteria **MCC**
 Bacillus pyocyaneus
CC Excl: See code: 320.0

320.9 Meningitis due to unspecified bacterium **MCC**
 Meningitis:
 bacterial NOS
 purulent NOS
 Meningitis:
 pyogenic NOS
 suppurative NOS
CC Excl: See code: 320.0

4th **321 Meningitis due to other organisms** **MCC**
INCLUDES arachnoiditis
 leptomeningitis
 meningitis
 pachymeningitis } due to organisms other than bacterial

DEF: Infection causing inflammation of the lining of the brain and/or spinal cord, due to organisms other than bacteria.

AHA: J-F, '87, 6

321.0 Cryptococcal meningitis **MCC**
Code first underlying disease (117.5)
CC Excl: See code: 320.0

321.1 Meningitis in other fungal diseases **MCC**
Code first underlying disease (110.0-118)
EXCLUDES meningitis in:
 candidiasis (112.83)
 coccidioidomycosis (114.2)
 histoplasmosis (115.01, 115.11, 115.91)
CC Excl: See code: 320.0

321.2 Meningitis due to viruses not elsewhere classified **MCC**
Code first underlying disease, as:
 meningitis due to arbovirus (060.0-066.9)

EXCLUDES meningitis (due to):
 abacterial (047.0-047.9)
 adenovirus (049.1)
 aseptic NOS (047.9)
 Coxsackie (virus) (047.0)
 ECHO virus (047.1)
 enterovirus (047.0-047.9)
 herpes simplex virus (054.72)
 herpes zoster virus (053.0)
 lymphocytic choriomeningitis virus (049.0)
 mumps (072.1)
 viral NOS (047.9)
 meningo-eruptive syndrome (047.1)

CC Excl: 003.21, 013.00-013.16, 036.0, 047.0-047.9, 049.0-049.1, 053.0, 054.72, 072.1, 090.42, 091.81, 094.2, 098.89, 100.81, 112.83, 114.2, 115.01, 115.11, 115.91, 130.0, 320.0-322.9, 349.89-349.9, 357.0

AHA: 4Q, '04, 51

321.3 Meningitis due to trypanosomiasis **MCC**
Code first underlying disease (086.0-086.9)
CC Excl: See code: 320.0

321.4 Meningitis in sarcoidosis **MCC**
Code first underlying disease (135)
CC Excl: See code: 320.0

321.8 Meningitis due to other nonbacterial organisms classified elsewhere **MCC**
Code first underlying disease
EXCLUDES leptospiral meningitis (100.81)
CC Excl: See code: 320.0

4th **322 Meningitis of unspecified cause** **MCC**
INCLUDES arachnoiditis
 leptomeningitis
 meningitis
 pachymeningitis } with no organism specified as cause

AHA: J-F, '87, 6

DEF: Infection causing inflammation of the lining of the brain and/or spinal cord, due to unspecified cause.

322.0 Nonpyogenic meningitis **MCC**
 Meningitis with clear cerebrospinal fluid
CC Excl: See code: 320.0

322.1 Eosinophilic meningitis **MCC**
CC Excl: See code: 320.0

322.2 Chronic meningitis **CC**
CC Excl: See code: 320.0

322.9 Meningitis, unspecified

MCC

CC Excl: See code: 320.0

✓ 4th 323 Encephalitis, myelitis, and encephalomyelitis

INCLUDES acute disseminated encephalomyelitis
meningoencephalitis, except bacterial
meningomyelitis, except bacterial
myelitis:
 ascending
 transverse

EXCLUDES acute transverse myelitis NOS (341.20)
acute transverse myelitis in conditions classified
 elsewhere (341.21)
bacterial:
 meningoencephalitis (320.0-320.9)
 meningomyelitis (320.0-320.9)
 idiopathic transverse myelitis (341.22)

DEF: Encephalitis: inflammation of brain tissues.

DEF: Myelitis: inflammation of the spinal cord.

DEF: Encephalomyelitis: inflammation of brain and spinal cord.

✓ 5th 323.0 Encephalitis, myelitis, and encephalomyelitis in viral diseases classified elsewhere

Code first underlying disease, as:
cat-scratch disease (078.3)
infectious mononucleosis (075)
ornithosis (073.7)

323.01 Encephalitis and encephalomyelitis in viral diseases classified elsewhere

MCC

EXCLUDES encephalitis (in):
 arthropod-borne viral (062.0-064)
 herpes simplex (054.3)
 mumps (072.2)
 other viral diseases of central ner-
 vous system (049.8-049.9)
 poliomyelitis (045.0-045.9)
 rubella (056.01)
 slow virus infections of central ner-
 vous system (046.0-046.9)
 viral NOS (049.9)
 West Nile (066.41)

CC Excl: 003.21, 013.00-013.16, 013.60-013.66, 036.0,
046.2, 046.71-046.8, 047.0-049.8, 051.9-052.0,
052.7-053.13, 053.19, 053.79-053.9, 054.3, 054.72,
054.79-054.9, 056.01, 057.8-059.9, 062.0-064,
066.2-066.49, 072.1-072.2, 073.7, 075, 078.89,
079.81-079.82, 079.89, 079.99, 090.41-090.42,
091.81, 094.2, 094.81, 098.89, 100.81, 112.83, 114.2,
115.01, 115.11, 115.91, 130.0, 139.8, 290.12,
320.0-323.9, 341.1, 349.89-349.9, 357.0, 487.8, 771.2

AHA: 4Q, '06, 58-63

323.02 Myelitis in viral diseases classified elsewhere

MCC

EXCLUDES myelitis (in):
 herpes simplex (054.74)
 herpes zoster (053.14)
 poliomyelitis (045.0-045.9)
 rubella (056.01)
 other viral diseases of central ner-
 vous system (049.8-049.9)

CC Excl: See code: 323.01

AHA: 4Q, '06, 58-63

323.1 Encephalitis, myelitis, and encephalomyelitis in rickettsial diseases classified elsewhere

MCC

Code first underlying disease (080-083.9)

DEF: Inflammation of the brain caused by rickettsial disease carried by louse, tick, or mite.

CC Excl: 013.60-013.66, 046.2, 046.71-046.8, 048-049.0, 049.8,
052.0, 052.2, 054.3, 054.74, 056.01, 057.8-058.29,
059.00-059.9, 062.0-064, 066.2-066.49, 072.2, 073.7, 079.82,
079.99, 081.9, 083.9, 090.41, 094.81, 117.5, 124, 130.0, 290.12,
323.01-323.9, 341.1, 487.8, 771.2, 984.9

323.2 Encephalitis, myelitis, and encephalomyelitis in protozoal diseases classified elsewhere

MCC

Code first underlying disease, as:
malaria (084.0-084.9)
trypanosomiasis (086.0-086.9)

DEF: Inflammation of the brain caused by protozoal disease carried by mosquitoes and flies.

CC Excl: 013.60-013.66, 046.2, 046.71-046.8, 048-049.0, 049.8,
052.0, 052.2, 054.3, 054.74, 056.01, 057.8-058.29,
059.00-059.9, 062.0-064, 066.2-066.49, 072.2, 073.7, 079.82,
079.99, 081.9, 083.9, 084.6, 090.41, 094.81, 117.5, 124, 130.0,
290.12, 323.01-323.9, 341.1, 487.8, 771.2, 984.9

✓ 5th 323.4 Other encephalitis, myelitis, and encephalomyelitis due to infection classified elsewhere

Code first underlying disease

323.41 Other encephalitis and encephalomyelitis due to infection classified elsewhere

MCC

EXCLUDES encephalitis (in):
 meningococcal (036.1)
 syphilis:
 NOS (094.81)
 congenital (090.41)
 toxoplasmosis (130.0)
 tuberculosis (013.6)
 meningoencephalitis due to
 free-living amoeba [*Naegleria*]
 (136.29)

CC Excl: See code: 323.01

AHA: 4Q, '06, 58-63

323.42 Other myelitis due to infection classified elsewhere

MCC

EXCLUDES myelitis (in):
 syphilis (094.89)
 tuberculosis (013.6)

CC Excl: See code: 323.01

AHA: 4Q, '06, 58-63

✓ 5th 323.5 Encephalitis, myelitis, and encephalomyelitis following immunization procedures

Use additional E code to identify vaccine

323.51 Encephalitis and encephalomyelitis following immunization procedures

MCC

Encephalitis postimmunization or postvaccinal
Encephalomyelitis postimmunization or
 postvaccinal

CC Excl: See code: 323.01

AHA: 4Q, '06, 58-63

323.52 Myelitis following immunization procedures

MCC

Myelitis postimmunization or postvaccinal

CC Excl: See code: 323.01

AHA: 4Q, '06, 58-63

✓ 5th 323.6 Postinfectious encephalitis, myelitis, and encephalomyelitis

Code first underlying disease

DEF: Infection, inflammation of brain several weeks following the outbreak of a systemic infection.

323.61 Infectious acute disseminated encephalomyelitis [ADEM]

MCC

Acute necrotizing hemorrhagic encephalopathy

EXCLUDES noninfectious acute disseminated
encephalo- myelitis (ADEM)
(323.81)

CC Excl: See code: 323.01

AHA: 4Q, '06, 58-63

323.62 Other postinfectious encephalitis and encephalomyelitis

MCC

EXCLUDES encephalitis:
 postchickenpox (052.0)
 postmeasles (055.0)

CC Excl: See code: 323.01

AHA: 4Q, '06, 58-63

- 323.63 **Postinfectious myelitis** MCC
EXCLUDES *postchickenpox myelitis (052.2)*
herpes simplex myelitis (054.74)
herpes zoster myelitis (053.14)
CC Excl: See code: 323.01
AHA: 4Q, '06, 58-63
- ✓5th 323.7 **Toxic encephalitis, myelitis, and encephalomyelitis**
Code first underlying cause, as:
carbon tetrachloride (982.1)
hydroxyquinoline derivatives (961.3)
lead (984.0-984.9)
mercury (985.0)
thallium (985.8)
AHA: 2Q, '97, 8
- 323.71 **Toxic encephalitis and encephalomyelitis** MCC
CC Excl: See code: 323.01
AHA: 4Q, '06, 58-63
- 323.72 **Toxic myelitis** MCC
CC Excl: See code: 323.01
AHA: 4Q, '06, 58-63
- ✓5th 323.8 **Other causes of encephalitis, myelitis, and encephalomyelitis**
- 323.81 **Other causes of encephalitis and encephalomyelitis** MCC HIV
 Noninfectious acute disseminated encephalomyelitis (ADEM)
CC Excl: See code: 323.01
AHA: 4Q, '06, 58-63
- 323.82 **Other causes of myelitis** MCC HIV
 Transverse myelitis NOS
CC Excl: See code: 323.01
AHA: 4Q, '06, 58-63
- 323.9 **Unspecified cause of encephalitis, myelitis, and encephalomyelitis** MCC HIV
CC Excl: 013.60-013.66, 046.2, 046.71-046.8, 048-049.0, 049.8, 052.0, 052.2, 054.3, 054.74, 056.01, 057.8-058.29, 059.00-059.9, 062.0-064, 066.2-066.49, 072.2, 073.7, 075, 078.3, 079.82, 079.99, 081.9, 083.9, 084.6, 090.41, 094.81, 117.5, 124, 130.0, 290.12, 323.01-323.9, 341.1, 382.4, 487.8, 710.0, 771.2, 984.9
AHA: 1Q, '06, 8
- ✓4th 324 **Intracranial and intraspinal abscess** MCC
- 324.0 **Intracranial abscess** MCC
 Abscess (embolic):
 cerebellar
 cerebral
 Abscess (embolic) of brain [any part]:
 epidural
 extradural
 otogenic
 subdural
EXCLUDES *tuberculous (013.3)*
CC Excl: 006.5, 013.20-013.36, 249.60-249.61, 249.80-249.91, 250.60-250.63, 250.80-250.93, 324.0-325, 348.81-348.9
- 324.1 **Intraspinal abscess** MCC
 Abscess (embolic) of spinal cord [any part]:
 epidural
 extradural
 subdural
EXCLUDES *tuberculous (013.5)*
CC Excl: 0006.5, 013.20-013.36, 249.60-249.61, 249.80-249.91, 250.60-250.63, 250.80-250.93, 324.1
- 324.9 **Of unspecified site** MCC
 Extradural or subdural abscess NOS
CC Excl: 006.5, 013.20-013.36, 249.60-249.61, 249.80-249.91, 250.60-250.63, 250.80-250.93, 324.0-325

- 325 **Phlebitis and thrombophlebitis of intracranial venous sinuses** MCC
 Embolism
 Endophlebitis
 Phlebitis, septic or suppurative
 Thrombophlebitis
 Thrombosis
 } of cavernous, lateral or other intracranial or unspecified intracranial venous sinus
EXCLUDES *that specified as:*
 complicating pregnancy, childbirth, or the puerperium (671.5)
 of nonpyogenic origin (437.6)
DEF: Inflammation and formation of blood clot in a vein within the brain or its lining.
CC Excl: See code: 324.9
- 326 **Late effects of intracranial abscess or pyogenic infection**
 Note: This category is to be used to indicate conditions whose primary classification is to 320-325 [excluding 320.7, 321.0-321.8, 323.01-323.42, 323.6-323.7] as the cause of late effects, themselves classifiable elsewhere. The "late effects" include conditions specified as such, or as sequelae, which may occur at any time after the resolution of the causal condition.
 Use additional code to identify condition, as:
 hydrocephalus (331.4)
 paralysis (342.0-342.9, 344.0-344.9)
ORGANIC SLEEP DISORDERS (327)
TIP: If the sleep disorder is not documented with the etiology related to an organic disease process, see instead subcategory 307.4.
- ✓4th 327 **Organic sleep disorders**
AHA: 4Q, '05, 59-64
- ✓5th 327.0 **Organic disorders of initiating and maintaining sleep [Organic insomnia]**
EXCLUDES *insomnia NOS (780.52)*
insomnia not due to a substance or known physiological condition (307.41-307.44)
insomnia with sleep apnea NOS (780.51)
- 327.00 **Organic insomnia, unspecified**
- 327.01 **Insomnia due to medical condition classified elsewhere**
Code first underlying condition
EXCLUDES *insomnia due to mental disorder (327.02)*
- 327.02 **Insomnia due to mental disorder**
Code first mental disorder
EXCLUDES *alcohol induced insomnia (291.82)*
drug induced insomnia (292.85)
- 327.09 **Other organic insomnia**
- ✓5th 327.1 **Organic disorder of excessive somnolence [Organic hypersomnia]**
EXCLUDES *hypersomnia NOS (780.54)*
hypersomnia not due to a substance or known physiological condition (307.43-307.44)
hypersomnia with sleep apnea NOS (780.53)
- 327.10 **Organic hypersomnia, unspecified**
- 327.11 **Idiopathic hypersomnia with long sleep time**
- 327.12 **Idiopathic hypersomnia without long sleep time**
- 327.13 **Recurrent hypersomnia**
 Kleine-Levin syndrome
 Menstrual related hypersomnia
- 327.14 **Hypersomnia due to medical condition classified elsewhere**
Code first underlying condition
EXCLUDES *hypersomnia due to mental disorder (327.15)*

- 327.15 **Hypersomnia due to mental disorder**
Code first mental disorder
EXCLUDES alcohol induced hypersomnia (291.82)
drug induced hypersomnia (292.85)
- 327.19 Other organic hypersomnia
- ✓^{5th} 327.2 **Organic sleep apnea**
EXCLUDES Cheyne-Stokes breathing (786.04)
hypersomnia with sleep apnea NOS (780.53)
insomnia with sleep apnea NOS (780.51)
sleep apnea in newborn (770.81-770.82)
sleep apnea NOS (780.57)
- 327.20 Organic sleep apnea, unspecified
- 327.21 Primary central sleep apnea
- 327.22 High altitude periodic breathing
- 327.23 **Obstructive sleep apnea (adult) (pediatric)**
647.33 Obstructive sleep apnea (adult) I-10
(pediatric)
- 327.24 **Idiopathic sleep related nonobstructive alveolar hypoventilation**
Sleep related hypoxia
- 327.25 **Congenital central alveolar hypoventilation syndrome**
- 327.26 **Sleep related hypoventilation/ hypoxemia in conditions classifiable elsewhere**
Code first underlying condition
- 327.27 **Central sleep apnea in conditions classified elsewhere**
Code first underlying condition
- 327.29 Other organic sleep apnea
- ✓^{5th} 327.3 **Circadian rhythm sleep disorder**
Organic disorder of sleep wake cycle
Organic disorder of sleep wake schedule
EXCLUDES alcohol induced circadian rhythm sleep disorder (291.82)
circadian rhythm sleep disorder of nonorganic origin (307.45)
disruption of 24 hour sleep wake cycle NOS (780.55)
drug induced circadian rhythm sleep disorder (292.85)
- 327.30 Circadian rhythm sleep disorder, unspecified
- 327.31 Circadian rhythm sleep disorder, delayed sleep phase type
- 327.32 Circadian rhythm sleep disorder, advanced sleep phase type
- 327.33 Circadian rhythm sleep disorder, irregular sleep-wake type
- 327.34 Circadian rhythm sleep disorder, free-running type
- 327.35 Circadian rhythm sleep disorder, jet lag type
- 327.36 Circadian rhythm sleep disorder, shift work type
- 327.37 **Circadian rhythm sleep disorder in conditions classified elsewhere**
Code first underlying condition
- 327.39 Other circadian rhythm sleep disorder
- ✓^{5th} 327.4 **Organic parasomnia**
EXCLUDES alcohol induced parasomnia (291.82)
drug induced parasomnia (292.85)
parasomnia not due to a known physiological condition (307.47)
- 327.40 Organic parasomnia, unspecified
- 327.41 Confusional arousals
- 327.42 REM sleep behavior disorder

- 327.43 Recurrent isolated sleep paralysis
- 327.44 **Parasomnia in conditions classified elsewhere**
Code first underlying condition
- 327.49 Other organic parasomnia
- ✓^{5th} 327.5 **Organic sleep related movement disorders**
EXCLUDES restless legs syndrome (333.94)
sleep related movement disorder NOS (780.58)
- 327.51 **Periodic limb movement disorder**
Periodic limb movement sleep disorder
- 327.52 Sleep related leg cramps
- 327.53 Sleep related bruxism
- 327.59 Other organic sleep related movement disorders
- 327.8 Other organic sleep disorders
AHA: 2Q, '07, 6

HEREDITARY AND DEGENERATIVE DISEASES OF THE CENTRAL NERVOUS SYSTEM (330-337)

- EXCLUDES** hepatolenticular degeneration (275.1)
multiple sclerosis (340)
other demyelinating diseases of central nervous system (341.0-341.9)

✓^{4th} 330 Cerebral degenerations usually manifest in childhood

Use additional code to identify associated mental retardation

- 330.0 **Leukodystrophy** CC
Krabbe's disease
Leukodystrophy:
NOS
globoid cell
metachromatic
sudanophilic
Pelizaeus-Merzbacher disease
Sulfatide lipidosis
DEF: Hereditary disease of arylsulfatase or cerebroside sulfatase; characterized by a diffuse loss of myelin in CNS; infantile form causes blindness, motor disturbances, rigidity, mental deterioration and, occasionally, convulsions.
CC Excl: 330.0-330.9, 331.7, 348.81-348.9, 349.89-349.9
- 330.1 **Cerebral lipidoses** CC
Amaurotic (familial) idiocy
Disease:
Batten
Jansky-Bielschowsky
Kufs'
Spielmeyer-Vogt
Tay-Sachs
Gangliosidosis
DEF: Genetic disorder causing abnormal lipid accumulation in the reticuloendothelial cells of the brain.
CC Excl: 330.1-331.2, 331.7, 331.83-331.9
- 330.2 **Cerebral degeneration in generalized lipidoses** CC
Code first underlying disease, as:
Fabry's disease (272.7)
Gaucher's disease (272.7)
Niemann-Pick disease (272.7)
sphingolipidosis (272.7)
CC Excl: See code: 330.1
- 330.3 **Cerebral degeneration of childhood in other diseases classified elsewhere** CC
Code first underlying disease, as:
Hunter's disease (277.5)
mucopolysaccharidosis (277.5)
CC Excl: See code: 330.1

330.8 Other specified cerebral degenerations in childhood CC

Alpers' disease or gray-matter degeneration
 Infantile necrotizing encephalomyelopathy
 Leigh's disease
 Subacute necrotizing encephalopathy or
 encephalomyelopathy

CC Excl: See code: 330.1

AHA: N-D, '85, 5

330.9 Unspecified cerebral degeneration in childhood CC

CC Excl: See code: 330.1

✓4th 331 Other cerebral degenerations

Use additional code, where applicable, to identify dementia:
 with behavioral disturbance (294.11)
 without behavioral disturbance (294.10)

331.0 Alzheimer's disease

DEF: Diffuse atrophy of cerebral cortex; causing a progressive decline in intellectual and physical functions, including memory loss, personality changes and profound dementia.

AHA: 4Q, '00, 41; 4Q, '99, 7; N-D, '84, 20

G30.9 Alzheimer's disease unspecified I-10

✓5th 331.1 Frontotemporal dementia

DEF: Rare, progressive degenerative brain disease, similar to Alzheimer's; cortical atrophy affects the frontal and temporal lobes.

AHA: 4Q, '03, 57

331.11 Pick's disease

DEF: A progressive frontotemporal dementia with asymmetrical atrophy of the frontal and temporal regions of the cerebral cortex, abnormal rounded brain cells called Pick cells with the presence of abnormal staining of protein (called tau); symptoms include prominent apathy, behavioral changes such as disinhibition and restlessness, echolalia, impairment of language, memory, and intellect, increased carelessness, poor personal hygiene, and decreased attention span.

331.19 Other frontotemporal dementia

Frontal dementia

331.2 Senile degeneration of brain

EXCLUDES senility NOS (797)

331.3 Communicating hydrocephalus CC

Secondary normal pressure hydrocephalus

EXCLUDES congenital hydrocephalus (742.3)
 idiopathic normal pressure hydrocephalus (331.5)
 normal pressure hydrocephalus (331.5)
 spina bifida with hydrocephalus (741.0)

DEF: Subarachnoid hemorrhage and meningitis causing excess buildup of cerebrospinal fluid in cavities due to nonabsorption of fluid back through fluid pathways.

CC Excl: 331.3-331.5

AHA: S-O, '85, 12

331.4 Obstructive hydrocephalus CC

Acquired hydrocephalus NOS

EXCLUDES congenital hydrocephalus (742.3)
 idiopathic normal pressure hydrocephalus (331.5)
 normal pressure hydrocephalus (331.5)
 spina bifida with hydrocephalus (741.0)

DEF: Obstruction of cerebrospinal fluid passage from brain into spinal canal.

CC Excl: 249.60-249.61, 249.80-249.91, 250.60-250.63, 250.80-250.93, 331.3-331.7, 331.82-331.9, 348.81-348.9, 741.00-741.03, 742.3-742.4, 742.59-742.9

AHA: 4Q, '03, 106; 1Q, '99, 9

G91.1 Obstructive hydrocephalus I-10

331.5 Idiopathic normal pressure hydrocephalus [INPH] CC

Normal pressure hydrocephalus NOS

EXCLUDES congenital hydrocephalus (742.3)
 secondary normal pressure hydrocephalus (331.3)
 spina bifida with hydrocephalus (741.0)

DEF: Abnormal increase of cerebrospinal fluid in the brain's ventricles; results in dementia, progressive mental impairment, gait disturbance, and impaired bladder control.

CC Excl: See code: 331.3

AHA: 4Q, '07, 74

331.7 Cerebral degeneration in diseases classified elsewhere

Code first underlying disease, as:

alcoholism (303.0-303.9)
 beriberi (265.0)
 cerebrovascular disease (430-438)
 congenital hydrocephalus (741.0, 742.3)
 myxedema (244.0-244.9)
 neoplastic disease (140.0-239.9)
 vitamin B12 deficiency (266.2)

EXCLUDES cerebral degeneration in:
 Jakob-Creutzfeldt disease
 ▶(046.11-046.19)◀
 progressive multifocal
 leukoencephalopathy (046.3)
 subacute spongiform encephalopathy (046.1)

✓5th 331.8 Other cerebral degeneration**331.81 Reye's syndrome** MCC P

DEF: Rare childhood illness, often developed after a viral upper respiratory infection; characterized by vomiting, elevated serum transaminase, changes in liver and other viscera; brain swelling, disturbances of consciousness and seizures; can be fatal.

CC Excl: 331.81

331.82 Dementia with Lewy bodies

Dementia with Parkinsonism
 Lewy body dementia
 Lewy body disease

DEF: A cerebral dementia with neurophysiologic changes, increased hippocampal volume, hypoperfusion in the occipital lobes, and beta amyloid deposits with neurofibrillary tangles, atrophy of cortex and brainstem, hallmark neuropsychologic characteristics are fluctuating cognition with pronounced variation in attention and alertness; recurrent hallucinations; and parkinsonism.

AHA: 4Q, '03, 57

G31.83 Dementia with Lewy bodies I-10

331.83 Mild cognitive impairment, so stated

EXCLUDES altered mental status (780.97)
 cerebral degeneration (331.0-331.9)
 change in mental status (780.97)
 cognitive deficits following (late effects of) cerebral hemorrhage or infarction (438.0)
 cognitive impairment due to intracranial or head injury (850-854, 959.01)
 cognitive impairment due to late effect of intracranial injury (907.0)
 ▶cognitive impairment due to skull fracture (800-801, 803-804)◀
 dementia (290.0-290.43, 294.8)
 mild memory disturbance (310.8)
 neurologic neglect syndrome (781.8)
 personality change, nonpsychotic (310.1)

AHA: 4Q, '06, 75

331.89 Other

Cerebral ataxia

331.9 Cerebral degeneration, unspecified

- ✓4th 332 Parkinson's disease**
EXCLUDES dementia with Parkinsonism (331.82)
- 332.0 Paralysis agitans**
 Parkinsonism or Parkinson's disease:
 NOS
 idiopathic
 primary
DEF: Form of progressive parkinsonism characterized by mask-like facial expressions, inability to stand or walk smoothly, muscle weakness, and involuntary trembling movement.
AHA: M-A, '87, 7
G20 Parkinson's disease **I-10** **CC**
- 332.1 Secondary Parkinsonism** **CC**
 Neuroleptic-induced Parkinsonism
 Parkinsonism due to drugs
Use additional E code to identify drug, if drug-induced
EXCLUDES Parkinsonism (in):
 Huntington's disease (333.4)
 progressive supranuclear palsy (333.0)
 Shy-Drager syndrome (333.0)
 syphilitic (094.82)
CC Excl: 332.0-332.1
- ✓4th 333 Other extrapyramidal disease and abnormal movement disorders**
INCLUDES other forms of extrapyramidal, basal ganglia, or striatopallidal disease
EXCLUDES abnormal movements of head NOS (781.0)
 sleep related movement disorders (327.51-327.59)
- 333.0 Other degenerative diseases of the basal ganglia** **CC**
 Atrophy or degeneration:
 olivopontocerebellar [Dégérine-Thomas syndrome]
 pigmentary pallidal [Hallervorden-Spatz disease]
 striatonigral
 Parkinsonian syndrome associated with:
 idiopathic orthostatic hypotension
 symptomatic orthostatic hypotension
 Progressive supranuclear ophthalmoplegia
 Shy-Drager syndrome
CC Excl: 332.0-332.1, 335.23, 337.00-337.09, 348.30-348.39
AHA: 3Q, '96, 8
- 333.1 Essential and other specified forms of tremor**
 Benign essential tremor
 Familial tremor
 Medication-induced postural tremor
Use additional E code to identify drug, if drug-induced
EXCLUDES tremor NOS (781.0)
- 333.2 Myoclonus**
 Familial essential myoclonus
 ▶ Palatal myoclonus ◀
EXCLUDES ▶ progressive myoclonic epilepsy (345.1)
 Unverricht-Lundborg disease (345.1) ◀
Use additional E code to identify drug, if drug-induced
DEF: Spontaneous movements or contractions of muscles.
AHA: 3Q, '97, 4; M-A, '87, 12
- 333.3 Tics of organic origin**
Use additional E code to identify drug, if drug-induced
EXCLUDES Gilles de la Tourette's syndrome (307.23)
 habit spasm (307.22)
 tic NOS (307.20)
- 333.4 Huntington's chorea** **CC**
DEF: Genetic disease characterized by chronic progressive mental deterioration; dementia and death within 15 years of onset.
CC Excl: 332.0-332.1, 340-341.1, 341.8-341.9, 343.0-344.2, 348.1, 348.30-348.5, 348.81-348.9, 349.1, 349.82-349.9, 780.72
- 333.5 Other choreas**
 Hemiballism(us)
 Paroxysmal choreo-athetosis
Use additional E code to identify drug, if drug-induced
EXCLUDES Sydenham's or rheumatic chorea (392.0-392.9)
- 333.6 Genetic torsion dystonia**
 Dystonia:
 deformans progressiva
 musculorum deformans
 (Schwalbe-) Ziehen-Oppenheim disease
DEF: Sustained muscular contractions, causing twisting and repetitive movements that result in abnormal postures of trunk and limbs; etiology unknown.
- ✓5th 333.7 Acquired torsion dystonia**
333.71 Athetoid cerebral palsy **CC**
 Double athetosis (syndrome)
 Vogt's disease
EXCLUDES infantile cerebral palsy (343.0-343.9)
CC Excl: 332.0-332.1, 333.71, 333.90, 333.99, 343.0-343.9, 348.30-348.39
AHA: 4Q, '06, 76-78
- 333.72 Acute dystonia due to drugs** **CC**
 Acute dystonic reaction due to drugs
 Neuroleptic induced acute dystonia
Use additional E code to identify drug
EXCLUDES blepharospasm due to drugs (333.85)
 orofacial dyskinesia due to drugs (333.85)
 secondary Parkinsonism (332.1)
 subacute dyskinesia due to drugs (333.85)
 tardive dyskinesia (333.85)
CC Excl: 332.0-332.1, 333.71, 333.90, 333.99, 348.30-348.39
AHA: 4Q, '06, 76-78
- 333.79 Other acquired torsion dystonia** **CC**
CC Excl: See code: 333.72
AHA: 4Q, '06, 76-78
- ✓5th 333.8 Fragments of torsion dystonia**
Use additional E code to identify drug, if drug-induced
- 333.81 Blepharospasm**
EXCLUDES blepharospasm due to drugs (333.85)
DEF: Uncontrolled winking or blinking due to orbicularis oculi muscle spasm.
- 333.82 Orofacial dyskinesia**
EXCLUDES orofacial dyskinesia due to drugs (333.85)
DEF: Uncontrolled movement of mouth or facial muscles.
- 333.83 Spasmodic torticollis**
EXCLUDES torticollis:
 NOS (723.5)
 hysterical (300.11)
 psychogenic (306.0)
DEF: Uncontrolled movement of head due to spasms of neck muscle.
- 333.84 Organic writers' cramp**
EXCLUDES psychogenic (300.89)
- 333.85 Subacute dyskinesia due to drugs**
 Blepharospasm due to drugs
 Orofacial dyskinesia due to drugs
 Tardive dyskinesia
Use additional E code to identify drug
EXCLUDES acute dystonia due to drugs (333.72)
 acute dystonic reaction due to drugs (333.72)
 secondary Parkinsonism (332.1)
AHA: 4Q, '06, 76-78
- 333.89 Other**

- ✓5th 333.9 Other and unspecified extrapyramidal diseases and abnormal movement disorders** CC

 - 333.90 Unspecified extrapyramidal disease and abnormal movement disorder** CC

Medication-induced movement disorders NOS

Use additional E code to identify drug, if drug-induced

CC Excl: 332.0-332.1, 333.1-333.83, 333.85-333.93, 333.99, 335.22-335.23, 340-341.1, 341.8-341.9, 343.0-344.2, 348.1, 348.30-348.5, 348.81-348.9, 349.1, 349.82-349.9, 780.72
 - 333.91 Stiff-man syndrome** CC

CC Excl: See code: 333.90
 - 333.92 Neuroleptic malignant syndrome** MCC

Use additional E code to identify drug

EXCLUDES neuroleptic induced Parkinsonism (332.1)

CC Excl: 333.0-333.93, 333.99, 342.00-342.92, 348.2-348.39

AHA: 4Q, '94, 37
 - 333.93 Benign shuddering attacks**

AHA: 4Q, '94, 37
 - 333.94 Restless legs syndrome [RLS]**

DEF: Neurological disorder of unknown etiology with an irresistible urge to move the legs, which may temporarily relieve the symptoms, is accompanied by motor restlessness and sensations of pain, burning, prickling, or tingling.

AHA: 4Q, '06, 79

TIP: Assign an additional code if the underlying cause of the RLS is specified (e.g., iron deficiency anemia).

G25.81 Restless legs syndrome I-10
 - 333.99 Other**

Neuroleptic-induced acute akathisia

Use additional E code to identify drug, if drug-induced

AHA: 4Q, '04, 95; 2Q, '04, 12; 4Q, '94, 37
- ✓4th 334 Spino cerebellar disease**

EXCLUDES olivopontocerebellar degeneration (333.0) peroneal muscular atrophy (356.1)

 - 334.0 Friedreich's ataxia** CC

DEF: Genetic recessive disease of children; sclerosis of dorsal, lateral spinal cord columns; characterized by ataxia, speech impairment, swaying and irregular movements, with muscle paralysis, especially of lower limbs.

CC Excl: 334.0-334.9, 348.30-348.39
 - 334.1 Hereditary spastic paraplegia** CC

CC Excl: 333.0-333.93, 333.99-337.9, 340-344.9, 348.1, 348.30-348.39, 348.81-349.2, 349.82-349.9, 780.72
 - 334.2 Primary cerebellar degeneration** CC

Cerebellar ataxia:

 - Marie's
 - Sanger-Brown
 - Dyssynergia cerebellaris myoclonica

Primary cerebellar degeneration:

 - NOS
 - hereditary
 - sporadic

CC Excl: 333.0-333.93, 333.99-337.9, 340-344.9, 348.0-348.1, 348.30-348.39, 348.81-348.9, 349.82-349.9, 780.72

AHA: M-A, '87, 9
 - 334.3 Other cerebellar ataxia** CC

Cerebellar ataxia NOS

Use additional E code to identify drug, if drug-induced

CC Excl: See code: 334.2
- 334.4 Cerebellar ataxia in diseases classified elsewhere** CC

Code first underlying disease, as:

 - alcoholism (303.0-303.9)
 - myxedema (244.0-244.9)
 - neoplastic disease (140.0-239.9)

CC Excl: See code: 334.2
- 334.8 Other spinocerebellar diseases** CC

Ataxia-telangiectasia [Louis-Bar syndrome]

Corticostriatal-spinal degeneration

CC Excl: See code: 334.2
- 334.9 Spino cerebellar disease, unspecified** CC

CC Excl: 334.0-334.9
- ✓4th 335 Anterior horn cell disease**

 - 335.0 Werdnig-Hoffmann disease** CC

Infantile spinal muscular atrophy

Progressive muscular atrophy of infancy

DEF: Spinal muscle atrophy manifested in prenatal period or shortly after birth; symptoms include hypotonia, atrophy of skeletal muscle; death occurs in infancy.

CC Excl: 249.60-249.61, 249.80-249.91, 250.60-250.63, 250.80-250.93, 334.8-337.9, 349.89-349.9
 - ✓5th 335.1 Spinal muscular atrophy**

 - 335.10 Spinal muscular atrophy, unspecified** CC

CC Excl: See code: 335.0
 - 335.11 Kugelberg-Welander disease** CC

Spinal muscular atrophy:

 - familial
 - juvenile

DEF: Hereditary; juvenile muscle atrophy; appears during first two decades of life; due to lesions of anterior horns of spinal cord; includes wasting, diminution of lower body muscles and twitching.

CC Excl: See code: 335.0
 - 335.19 Other** CC

Adult spinal muscular atrophy

CC Excl: See code: 335.0
 - ✓5th 335.2 Motor neuron disease**

 - 335.20 Amyotrophic lateral sclerosis** CC A

Motor neuron disease (bulbar) (mixed type)

CC Excl: See code: 335.0

AHA: 4Q, '95, 81
 - 335.21 Progressive muscular atrophy** CC

Duchenne-Aran muscular atrophy

Progressive muscular atrophy (pure)

CC Excl: See code: 335.0
 - 335.22 Progressive bulbar palsy** CC

CC Excl: See code: 335.0
 - 335.23 Pseudobulbar palsy** CC

CC Excl: See code: 335.0
 - 335.24 Primary lateral sclerosis** CC

CC Excl: See code: 335.0
 - 335.29 Other** CC

CC Excl: See code: 335.0
 - 335.8 Other anterior horn cell diseases** CC

CC Excl: See code: 335.0
 - 335.9 Anterior horn cell disease, unspecified** CC

CC Excl: See code: 335.0
 - ✓4th 336 Other diseases of spinal cord**

 - 336.0 Syringomyelia and syringobulbia** CC

CC Excl: 334.8-337.9, 340-344.9, 348.30-348.39, 348.81-349.2, 349.89-349.9, 780.72

AHA: 1Q, '89, 10

336.1 Vascular myelopathies MCC
 Acute infarction of spinal cord (embolic) (nonembolic)
 Arterial thrombosis of spinal cord
 Edema of spinal cord
 Hematomyelia
 Subacute necrotic myelopathy
CC Excl: 249.60-249.61, 250.60-250.63, 334.8-337.9, 340-344.9, 348.1, 348.30-348.39, 349.0-349.2, 349.89-349.9, 780.72

336.2 Subacute combined degeneration of spinal cord in diseases classified elsewhere CC
Code first underlying disease, as:
 pernicious anemia (281.0)
 other vitamin B₁₂ deficiency anemia (281.1)
 vitamin B₁₂ deficiency (266.2)
CC Excl: 334.8-337.9, 340-344.9, 348.1, 348.30-348.39, 349.0-349.2, 349.89-349.9, 780.72

336.3 Myelopathy in other diseases classified elsewhere CC
Code first underlying disease, as:
 myelopathy in neoplastic disease (140.0-239.9)
EXCLUDES myelopathy in:
 intervertebral disc disorder (722.70-722.73)
 spondylosis (721.1, 721.41-721.42, 721.91)
CC Excl: See code: 336.1
AHA: 3Q, '99, 5

336.8 Other myelopathy CC
 Myelopathy: Myelopathy:
 drug-induced radiation-induced
 Use additional E code to identify cause
CC Excl: See code: 336.1

336.9 Unspecified disease of spinal cord CC HIV
 Cord compression NOS Myelopathy NOS
EXCLUDES myelitis (323.02, 323.1, 323.2, 323.42, 323.52, 323.63, 323.72, 323.82, 323.9)
 spinal (canal) stenosis (723.0, 724.00-724.09)
CC Excl: 249.60-249.61, 250.60-250.63, 334.1, 334.8-337.9, 340-344.9, 348.1, 348.30-348.39, 349.0-349.2, 349.89-349.9, 780.72

✓ **4th** **337 Disorders of the autonomic nervous system**
INCLUDES disorders of peripheral autonomic, sympathetic, parasympathetic, or vegetative system
EXCLUDES familial dysautonomia [Riley-Day syndrome] (742.8)

✓ **5th** **337.0 Idiopathic peripheral autonomic neuropathy**
337.00 Idiopathic peripheral autonomic neuropathy, unspecified
337.01 Carotid sinus syndrome
 Carotid sinus syncope
DEF: Vagal activation caused by pressure on the carotid sinus baroreceptors; sympathetic nerve impulses may cause sinus arrest or AV block.
AHA: 4Q, '08, 101-102

337.09 Other idiopathic peripheral autonomic neuropathy
 Cervical sympathetic dystrophy or paralysis

337.1 Peripheral autonomic neuropathy in disorders classified elsewhere CC
Code first underlying disease, as:
 amyloidosis (277.30-277.39)
 diabetes (249.6, 250.6)
CC Excl: 337.00-337.29, 337.9, 348.30-348.39
AHA: ▶2Q, '09, 13; ◀2Q, '93, 6; 3Q, '91, 9; N-D, '84, 9

✓ **5th** **337.2 Reflex sympathetic dystrophy**
DEF: Disturbance of the sympathetic nervous system evidenced by sweating, pain, pallor and edema following injury to nerves or blood vessels.
AHA: 4Q, '93, 24

337.20 Reflex sympathetic dystrophy, unspecified CC
 Complex regional pain syndrome type I, unspecified
CC Excl: 337.20-337.29

337.21 Reflex sympathetic dystrophy of the upper limb CC
 Complex regional pain syndrome type I of the upper limb
CC Excl: 249.60-249.61, 250.60-250.63, 334.8-337.9, 340-344.9, 348.1, 348.30-348.39, 349.0-349.2, 349.89-349.9, 780.72

337.22 Reflex sympathetic dystrophy of the lower limb CC
 Complex regional pain syndrome type I of the lower limb
CC Excl: See code: 337.21

337.29 Reflex sympathetic dystrophy of other specified site CC
 Complex regional pain syndrome type I of other specified site
CC Excl: See code: 337.21

337.3 Autonomic dysreflexia
 Use additional code to identify the cause, such as:
 pressure ulcer (707.00-707.09)
 fecal impaction (560.39)
 urinary tract infection (599.0)
DEF: Noxious stimuli evokes paroxysmal hypertension, bradycardia, excess sweating, headache, pilomotor responses, facial flushing, and nasal congestion due to uncontrolled parasympathetic nerve response; occurs in patients with spinal cord injury above sympathetic outflow tract (T₆).
AHA: 4Q, '98, 37

337.9 Unspecified disorder of autonomic nervous system

PAIN (338)

✓ **4th** **338 Pain, not elsewhere classified**
 Use additional code to identify:
 pain associated with psychological factors (307.89)

EXCLUDES generalized pain (780.96)
 headache syndromes (339.00-339.89)
 localized pain, unspecified type—code to pain by site
 migraines (346.0-346.9)
 pain disorder exclusively attributed to psychological factors (307.80)
 vulvar vestibulitis (625.71)
 vulvodynia (625.70-625.79)

AHA: 2Q, '07, 12

TIP: Do not assign a 338 code if the pain is not specified as acute or chronic, unless post-thoracotomy, postoperative, neoplasm related or central pain syndrome.

338.0 Central pain syndrome
 Déjérine-Roussy syndrome
 Myelopathic pain syndrome
 Thalamic pain syndrome (hyperesthetic)
AHA: 4Q, '06, 79-81

✓ **5th** **338.1 Acute pain**

338.11 Acute pain due to trauma
AHA: 1Q, '07, 7; 4Q, '06, 79-81

338.12 Acute post-thoracotomy pain
 Post-thoracotomy pain NOS
AHA: 4Q, '06, 79-81

338.18 Other acute postoperative pain
 Postoperative pain NOS
AHA: 4Q, '06, 79-81

G89.18 Other acute postprocedural pain I-10

338.19 Other acute pain
EXCLUDES neoplasm related acute pain (338.3)
AHA: 2Q, '07, 11; 4Q, '06, 79-81

- ✓5th 338.2 Chronic pain
 - EXCLUDES** *causalgia (355.9)*
 - lower limb (355.71)*
 - upper limb (354.4)*
 - chronic pain syndrome (338.4)*
 - myofascial pain syndrome (729.1)*
 - neoplasm related chronic pain (338.3)*
 - reflex sympathetic dystrophy (337.20-337.29)*
- 338.21 Chronic pain due to trauma
 - AHA: 4Q, '06, 79-81
- 338.22 Chronic post-thoracotomy pain
 - AHA: 4Q, '06, 79-81
- 338.28 Other chronic postoperative pain
 - AHA: 4Q, '06, 79-81
 - G89.28 Other chronic postprocedural pain I-10
- 338.29 Other chronic pain
 - AHA: 4Q, '06, 79-81
- 338.3 Neoplasm related pain (acute) (chronic)
 - Cancer associated pain
 - Pain due to malignancy (primary) (secondary)
 - Tumor associated pain
 - AHA: 2Q, '07, 11; 4Q, '06, 79-81
 - G89.3 Neoplasm related pain (acute) (chronic) I-10
- 338.4 Chronic pain syndrome
 - Chronic pain associated with significant psychosocial dysfunction
 - AHA: 2Q, '07, 11; 4Q, '06, 79-81
 - G89.4 Chronic pain syndrome I-10

OTHER HEADACHE SYNDROMES (339)

- ✓4th 339 Other headache syndromes
 - EXCLUDES** *headache:*
 - NOS (784.0)*
 - due to lumbar puncture (349.0)*
 - migraine (346.0-346.9)*
 - AHA: ▶4Q, '08, 102-105◀
- ✓5th 339.0 Cluster headaches and other trigeminal autonomic cephalgias
 - TACS
 - 339.00 Cluster headache syndrome, unspecified
 - Ciliary neuralgia Lower half migraine
 - Cluster headache NOS Migrainous neuralgia
 - Histamine cephalgia
 - 339.01 Episodic cluster headache
 - 339.02 Chronic cluster headache
 - 339.03 Episodic paroxysmal hemicrania
 - Paroxysmal hemicrania NOS
 - 339.04 Chronic paroxysmal hemicrania
 - 339.05 Short lasting unilateral neuralgiform headache with conjunctival injection and tearing
 - SUNCT
 - 339.09 Other trigeminal autonomic cephalgias
- ✓5th 339.1 Tension type headache
 - EXCLUDES** *tension headache NOS (307.81)*
 - tension headache related to psychological factors (307.81)*
 - AHA: ▶4Q, '08, 103◀
- 339.10 Tension type headache, unspecified
- 339.11 Episodic tension type headache
- 339.12 Chronic tension type headache
- ✓5th 339.2 Post-traumatic headache
 - TIP:** Do not assign during the acute phase of the trauma (e.g., head injury). When assigning 339.2X, report also a late effect code (e.g., 907.0 for intracranial injury).
 - 339.20 Post-traumatic headache, unspecified
 - AHA: ▶4Q, '08, 108◀
 - 339.21 Acute post-traumatic headache

- 339.22 Chronic post-traumatic headache
- 339.3 Drug induced headache, not elsewhere classified
 - Medication overuse headache Rebound headache
- ✓5th 339.4 Complicated headache syndromes
 - 339.41 Hemicrania continua
 - 339.42 New daily persistent headache
 - NDPH
 - 339.43 Primary thunderclap headache
 - 339.44 Other complicated headache syndrome
- ✓5th 339.8 Other specified headache syndromes
 - 339.81 Hypnic headache
 - 339.82 Headache associated with sexual activity
 - Orgasmic headache
 - Preorgasmic headache
 - 339.83 Primary cough headache
 - 339.84 Primary exertional headache
 - 339.85 Primary stabbing headache
 - 339.89 Other specified headache syndromes

OTHER DISORDERS OF THE CENTRAL NERVOUS SYSTEM (340-349)

- 340 Multiple sclerosis
 - Disseminated or multiple sclerosis:
 - NOS cord
 - brain stem generalized
 - CC Excl: 250.60-250.63, 250.80-250.93, 340, 341.8-341.9
 - G35 Multiple sclerosis I-10
- ✓4th 341 Other demyelinating diseases of central nervous system
 - 341.0 Neuromyelitis optica CC
 - CC Excl: 341.0, 348.30-348.39
 - 341.1 Schilder's disease CC
 - Baló's concentric sclerosis Encephalitis
 - Encephalitis periaxialis: periaxialis:
 - concentrica [Baló's] diffusa [Schilder's]
 - DEF: Chronic leukoencephalopathy of children and adolescents; symptoms include blindness, deafness, bilateral spasticity and progressive mental deterioration.
 - CC Excl: 066.40-066.49, 079.82, 348.30-348.39
 - ✓5th 341.2 Acute (transverse) myelitis
 - EXCLUDES** *acute (transverse) myelitis (in) (due to):*
 - following immunization procedures (323.52)*
 - infection classified elsewhere (323.42)*
 - postinfectious (323.63)*
 - protozoal diseases classified elsewhere (323.2)*
 - rickettsial diseases classified elsewhere (323.1)*
 - toxic (323.72)*
 - viral diseases classified elsewhere (323.02)*
 - transverse myelitis NOS (323.82)*
 - 341.20 Acute (transverse) myelitis NOS CC
 - CC Excl: 003.21, 013.00-013.16, 036.0, 047.0-047.9, 049.0-049.1, 053.0-053.13, 053.19, 053.79-053.9, 054.72, 054.79-054.9, 058.81-058.89, 072.1, 078.89, 079.81, 079.89, 079.99, 090.42, 091.81, 094.2, 098.89, 100.81, 112.83, 114.2, 115.01, 115.11, 115.91, 130.0, 139.8, 249.60-249.61, 250.60-250.63, 320.0-322.9, 334.8-337.9, 340-341.1, 341.8-344.9, 348.1, 348.30-348.39, 349.0-349.2, 349.89-349.9, 357.0, 780.72
 - AHA: 4Q, '06, 58-63
 - 341.21 Acute (transverse) myelitis in conditions classified elsewhere CC
 - Code first underlying condition
 - CC Excl: See code: 341.20
 - AHA: 4Q, '06, 58-63
 - 341.22 Idiopathic transverse myelitis CC
 - CC Excl: See code: 341.20
 - AHA: 4Q, '06, 58-63

341.8 Other demyelinating diseases of central nervous system CC

Central demyelination of corpus callosum
 Central pontine myelinosis
 Marchiafava (-Bignami) disease
CC Excl: 333.1–333.93, 333.99–337.9, 340–344.9, 348.30–348.39, 348.81–348.9, 349.82–349.9, 780.72
AHA: N-D, '87, 6

341.9 Demyelinating disease of central nervous system, unspecified CC HIV

CC Excl: See code: 341.8

✓4th 342 Hemiplegia and hemiparesis

Note: This category is to be used when hemiplegia (complete) (incomplete) is reported without further specification, or is stated to be old or long-standing but of unspecified cause. The category is also for use in multiple coding to identify these types of hemiplegia resulting from any cause.

EXCLUDES congenital (343.1)
 hemiplegia due to late effect of cerebrovascular accident (438.20–438.22)
 infantile NOS (343.4)

The following fifth-diits are for use with codes 342.0–342.9:

- 0 affecting unspecified side
- 1 affecting dominant side
- 2 affecting nondominant side

AHA: 4Q, '94, 38

§ ✓5th 342.0 Flaccid hemiplegia CC

[0–2] **CC Excl:** 334.0–337.9, 340–344.9, 348.30–348.39, 348.81–348.9, 349.82–349.9, 780.72

§ ✓5th 342.1 Spastic hemiplegia CC

[0–2] **CC Excl:** See code: 342.0

§ ✓5th 342.8 Other specified hemiplegia CC

[0–2] **CC Excl:** See code: 342.0

§ ✓5th 342.9 Hemiplegia, unspecified CC

[0–2] **CC Excl:** See code: 342.0
AHA: 3Q, '06, 5; 4Q, '98, 87
G81.90 Hemiplegia unspecified affect unspecified side I-10

✓4th 343 Infantile cerebral palsy

INCLUDES cerebral:
 palsy NOS
 spastic infantile paralysis
 congenital spastic paralysis (cerebral)
 Little's disease
 paralysis (spastic) due to birth injury:
 intracranial
 spinal

EXCLUDES athetoid cerebral palsy (333.71)
 hereditary cerebral paralysis, such as:
 hereditary spastic paraplegia (334.1)
 Vogt's disease (333.71)
 spastic paralysis specified as noncongenital or noninfantile (344.0–344.9)

343.0 Diplegic CC

Congenital diplegia Congenital paraplegia
DEF: Paralysis affecting both sides of the body simultaneously.
CC Excl: 343.0, 348.30–348.39

343.1 Hemiplegic CC

Congenital hemiplegia
EXCLUDES infantile hemiplegia NOS (343.4)
CC Excl: 343.1, 348.30–348.39

343.2 Quadriplegic MCC

Tetraplegic
CC Excl: 249.60–249.61, 249.80–249.91, 250.60–250.63, 250.80–250.93, 342.00–344.9, 348.81–348.9, 349.89–349.9, 742.59–742.9, 780.72

343.3 Monoplegic**343.4 Infantile hemiplegia** CC

Infantile hemiplegia (postnatal) NOS
CC Excl: See code: 342.0

343.8 Other specified infantile cerebral palsy**343.9 Infantile cerebral palsy, unspecified**

Cerebral palsy NOS
AHA: 4Q, '05, 89
G80.9 Cerebral palsy unspecified I-10

✓4th 344 Other paralytic syndromes

Note: This category is to be used when the listed conditions are reported without further specification or are stated to be old or long-standing but of unspecified cause. The category is also for use in multiple coding to identify these conditions resulting from any cause.

INCLUDES paralysis (complete) (incomplete), except as classifiable to 342 and 343

EXCLUDES congenital or infantile cerebral palsy (343.0–343.9)
 hemiplegia (342.0–342.9)
 congenital or infantile (343.1, 343.4)

✓5th 344.0 Quadriplegia and quadripareis

TIP: Assign also a code from subcategory 438.5 if late effect of CVA.

344.00 Quadriplegia unspecified MCC

CC Excl: See code: 343.2
AHA: 4Q, '03, 103; 4Q, '98, 38
G82.50 Quadriplegia unspecified I-10

344.01 C₁–C₄ complete MCC

CC Excl: See code: 343.2

344.02 C₁–C₄ incomplete MCC

CC Excl: See code: 343.2

344.03 C₅–C₇ complete MCC

CC Excl: See code: 343.2

344.04 C₅–C₇ incomplete MCC

CC Excl: See code: 343.2

344.09 Other MCC

CC Excl: See code: 343.2
AHA: 1Q, '01, 12; 4Q, '98, 39

344.1 Paraplegia CC

Paralysis of both lower limbs
 Paraplegia (lower)
CC Excl: 334.0–337.9, 340–344.9, 348.30–348.39, 348.8–348.9, 349.82–349.9, 780.72
AHA: 4Q, '03, 110; M-A, '87, 10
G82.20 Paraplegia unspecified I-10

344.2 Diplegia of upper limbs CC

Diplegia (upper)
 Paralysis of both upper limbs
CC Excl: 344.00–344.09, 344.2, 344.81–344.9, 349.89–349.9, 780.72

✓5th 344.3 Monoplegia of lower limb

Paralysis of lower limb
EXCLUDES monoplegia of lower limb due to late effect of cerebrovascular accident (438.40–438.42)

344.30 Affecting unspecified side**344.31 Affecting dominant side****344.32 Affecting nondominant side****✓5th 344.4 Monoplegia of upper limb**

Paralysis of upper limb
EXCLUDES monoplegia of upper limb due to late effect of cerebrovascular accident (438.30–438.32)

344.40 Affecting unspecified side**344.41 Affecting dominant side****344.42 Affecting nondominant side****344.5 Unspecified monoplegia**

§ Requires fifth digit. Valid digits are in [brackets] under each code. See category 342 for codes and definitions.

N Newborn Age: 0

P Pediatric Age: 0–17

M Maternity Age: 12–55

A Adult Age: 15–124

MCC Major CC Condition

CC CC Condition

HIV HIV Related Dx

✓5th 344.6 Cauda equina syndrome
DEF: Dull pain and paresthesias in sacrum, perineum and bladder due to compression of spinal nerve roots; pain radiates down buttocks, back of thigh, calf of leg and into foot with prickling, burning sensations.

344.60 Without mention of neurogenic bladder **CC**
CC Excl: 344.00-344.1, 344.30-344.32, 344.60-344.9, 349.89-349.9, 780.72

344.61 With neurogenic bladder **CC**
 Acontractile bladder
 Autonomic hyperreflexia of bladder
 Cord bladder
 Detrusor hyperreflexia
CC Excl: 334.0-337.9, 340-344.9, 348.30-348.39, 348.81-348.9, 349.82-349.9, 599.60-599.69, 780.72
AHA: M-J, '87, 12; M-A, '87, 10

✓5th 344.8 Other specified paralytic syndromes

344.81 Locked-in state **MCC**
DEF: State of consciousness where patients are paralyzed and unable to respond to environmental stimuli; patients have eye movements, and stimuli can enter the brain but patients unable to respond.
CC Excl: 342.00-344.9, 348.30-348.39, 348.81-348.9, 349.82-349.9, 780.72
AHA: 4Q, '93, 24

344.89 Other specified paralytic syndrome
AHA: 2Q, '99, 4

344.9 Paralysis, unspecified

✓4th 345 Epilepsy and recurrent seizures

The following fifth-digit subclassification is for use with categories 345.0, .1, .4-9:

- 0 without mention of intractable epilepsy**
- 1 with intractable epilepsy**
 - ▶pharmacoresistant (pharmacologically resistant)
 - poorly controlled
 - refractory (medically)
 - treatment resistant◀

EXCLUDES ▶hippocampal sclerosis (348.81)
 mesial temporal sclerosis (348.81)◀
 progressive myoclonic epilepsy (333.2)
 ▶temporal sclerosis (348.81)◀

DEF: Brain disorder characterized by electrical-like disturbances; may include occasional impairment or loss of consciousness, abnormal motor phenomena and psychic or sensory disturbances.
AHA: 1Q, '93, 24; 2Q, '92, 8; 4Q, '92, 23

§ ✓5th 345.0 Generalized nonconvulsive epilepsy **CC 1**
 [0-1] Absences: Pykno-epilepsy
 atonic Seizures:
 typical akinetic
 Minor epilepsy atonic
 Petit mal
CC Excl: 249.60-249.61, 250.60-250.63, 345.00-345.91, 348.81-348.9, 349.89-349.9
AHA: For code 345.00: 1Q, '04, 18

§ ✓5th 345.1 Generalized convulsive epilepsy **CC 1**
 [0-1] Epileptic seizures:
 clonic
 myoclonic
 tonic
 tonic-clonic
 Grand mal
 Major epilepsy
 ▶Progressive myoclonic epilepsy
 Unverricht-Lundborg disease◀
EXCLUDES convulsions:
 NOS (780.39)
 infantile (780.39)
 newborn (779.0)
 infantile spasms (345.6)
DEF: Convulsive seizures with tension of limbs (tonic) or rhythmic contractions (clonic).
CC Excl: For code 345.11: 249.60-249.61, 250.60-250.63, 345.00-345.91, 348.81-348.9, 349.89-349.9
AHA: 3Q, '97, 4

345.2 Petit mal status **MCC**
 Epileptic absence status
DEF: Minor myoclonic spasms and sudden momentary loss of consciousness in epilepsy.
CC Excl: 249.60-249.61, 249.80-249.91, 250.60-250.63, 250.80-250.93, 345.00-345.91, 348.81-348.9, 349.89-349.9

345.3 Grand mal status **MCC**
 Status epilepticus NOS
EXCLUDES *epilepsia partialis continua* (345.7)
 status:
 psychomotor (345.7)
 temporal lobe (345.7)
DEF: Sudden loss of consciousness followed by generalized convulsions in epilepsy.
CC Excl: See code: 345.2
AHA: 3Q, '05, 12
G40.301 Gen idiopath epilep&epi syn not intractabl w/se **I-10**

§ ✓5th 345.4 Localization-related (focal) (partial) epilepsy and epileptic syndromes with complex partial seizures **CC**
 [0-1] Epilepsy:
 limbic system
 partial:
 secondarily generalized
 with impairment of consciousness
 with memory and ideational disturbances
 psychomotor
 psychosensory
 temporal lobe
 Epileptic automatism
CC Excl: For code 345.40: 345.00-345.91, 348.30-348.39, 348.9, 349.89-349.9; For code 345.41: 249.60-249.61, 250.60-250.63, 345.00-345.91, 348.81-348.9, 349.89-349.9

§ ✓5th 345.5 Localization-related (focal) (partial) epilepsy and epileptic syndromes with simple partial seizures **CC**
 [0-1] Epilepsy:
 Bravais-Jacksonian NOS
 focal (motor) NOS
 Jacksonian NOS
 motor partial
 partial NOS:
 without impairment of consciousness
 sensory-induced
 somatomotor
 somatosensory
 visceral
 visual
CC Excl: For code 345.50: 345.00-345.91, 348.30-348.39, 348.9, 349.89-349.9; For code 345.51: 249.60-249.61, 250.60-250.63, 345.00-345.91, 348.81-348.9, 349.89-349.9

§ ✓5th 345.6 Infantile spasms **CC**
 [0-1] Hypsarhythmia Salaam attacks
 Lightning spasms
EXCLUDES *salaam tic* (781.0)
CC Excl: For code 345.60: 345.00-345.91, 348.30-348.39, 348.9, 349.89-349.9; For code 345.61: 249.60-249.61, 250.60-250.63, 345.00-345.91, 348.81-348.9, 349.89-349.9
AHA: N-D, '84, 12

§ ✓5th 345.7 Epilepsia partialis continua **CC 0 MCC 1**
 [0-1] Kojevnikov's epilepsy
DEF: Continuous muscle contractions and relaxation; result of abnormal neural discharge.
CC Excl: 249.60-249.61, 250.60-250.63, 345.00-345.91, 348.81-348.9, 349.89-349.9

§ ✓5th 345.8 Other forms of epilepsy and recurrent seizures **CC**
 [0-1] Epilepsy: Epilepsy:
 cursive [running] gelastic
CC Excl: 249.60-249.61, 250.60-250.63, 345.00-345.91, 348.81-348.9, 349.89-349.9

§ Requires fifth digit. Valid digits are in [brackets] under each code. See category 345 for codes and definitions.

- § ✓5th **345.9 Epilepsy, unspecified** CC 1
 [0-1] Epileptic convulsions, fits, or seizures NOS
 Recurrent seizures NOS
 Seizure disorder NOS
EXCLUDES *convulsion (convulsive) disorder (780.39)*
convulsive seizure or fit NOS (780.39)
recurrent convulsions (780.39)
CC Excl: For code 345.91: 249.60-249.61, 250.60-250.63,
 345.00-345.91, 348.81-348.9, 349.89-349.9
AHA: 1Q, '08, 17; N-D, '87, 12; **For code 345.90:** ▶2Q, '09, 10 ◀
G40.909 Epilepsy uns not intractbl w/o status epilepticus I-10
- ✓4th **346 Migraine**
EXCLUDES *headache:*
NOS (784.0)
syndromes (339.00-339.89)
AHA: 4Q, '08, 103, 105-107
 The following fifth-digit subclassification is for use with category 346:
 0 without mention of intractable migraine without mention of status migrainosus
 1 with intractable migraine, so stated without mention of status migrainosus
 2 without mention of intractable migraine with status migrainosus
 3 with intractable migraine, so stated, with status migrainosus
DEF: Benign vascular headache of extreme pain; commonly associated with irritability, nausea, vomiting and often photophobia; premonitory visual hallucination of a crescent in the visual field (scotoma).
- § ✓5th **346.0 Migraine with aura**
 [0-3] Basilar migraine
 Classic migraine
 Migraine preceded or accompanied by transient focal neurological phenomena
 Migraine triggered seizures
 Migraine with acute-onset aura
 Migraine with aura without headache (migraine equivalents)
 Migraine with prolonged aura
 Migraine with typical aura
 Retinal migraine
EXCLUDES *persistent migraine aura (346.5, 346.6)*
- § ✓5th **346.1 Migraine without aura**
 [0-3] Common migraine
- § ✓5th **346.2 Variants of migraine, not elsewhere classified**
 [0-3] Abdominal migraine
 Cyclical vomiting associated with migraine
 Ophthalmoplegic migraine
 Periodic headache syndromes in child or adolescent
EXCLUDES *cyclical vomiting NOS (536.2)*
psychogenic cyclical vomiting (306.4)
- § ✓5th **346.3 Hemiplegic migraine**
 [0-3] Familial migraine Sporadic migraine
- § ✓5th **346.4 Menstrual migraine** ♀
 [0-3] Menstrual headache
 Menstrually related migraine
 Premenstrual headache
 Premenstrual migraine
 Pure menstrual migraine
- § ✓5th **346.5 Persistent migraine aura without cerebral infarction**
 [0-3] Persistent migraine aura NOS
- § ✓5th **346.6 Persistent migraine aura with cerebral infarction** CC
 [0-3] **CC Excl:** For code 346.60: 346.60-346.63, 433.00-434.91; **For code 346.61, 346.62, 346.63:** 346.60-346.63, 433.00-434.91, 436
AHA: For code 346.60: 4Q, '08, 108
TIP: Assign also a code for the specific type of cerebral infarction.
- § ✓5th **346.7 Chronic migraine without aura**
 [0-3] Transformed migraine without aura

- § ✓5th **346.8 Other forms of migraine**
 [0-3]
- § ✓5th **346.9 Migraine, unspecified**
 [0-3] **AHA:** N-D, '85, 16
G43.90 Migraine unspecified not intractable I-10
- ✓4th **347 Cataplexy and narcolepsy**
DEF: Cataplexy: Sudden onset of muscle weakness with loss of tone and strength; caused by aggressive or spontaneous emotions.
DEF: Narcolepsy: Brief, recurrent, uncontrollable episodes of sound sleep.
- ✓5th **347.0 Narcolepsy**
347.00 Without cataplexy
 Narcolepsy NOS
347.01 With cataplexy
- ✓5th **347.1 Narcolepsy in conditions classified elsewhere**
Code first underlying condition
347.10 Without cataplexy
347.11 With cataplexy
- ✓4th **348 Other conditions of brain**
348.0 Cerebral cysts
 Arachnoid cyst Porencephaly, acquired
 Porencephalic cyst Pseudoporencephaly
EXCLUDES *porencephaly (congenital) (742.4)*
- 348.1 Anoxic brain damage** CC
Use additional E code to identify cause
EXCLUDES *that occurring in:*
abortion (634-638 with .7, 639.8)
ectopic or molar pregnancy (639.8)
labor or delivery (668.2, 669.4)
that of newborn (767.0, 768.0-768.9, 772.1-772.2)
DEF: Brain injury due to lack of oxygen, other than birth trauma.
CC Excl: 249.60-249.61, 249.80-249.91, 250.60-250.63, 250.80-250.93, 348.1-348.2, 349.89-349.9
G93.1 Anoxic brain damage not elsewhere classified I-10
- 348.2 Benign intracranial hypertension**
 Pseudotumor cerebri
EXCLUDES *hypertensive encephalopathy (437.2)*
DEF: Elevated pressure in brain due to fluid retention in brain cavities.
- ✓5th **348.3 Encephalopathy, not elsewhere classified**
AHA: 4Q, '03, 58; 3Q, '97, 4
- 348.30 Encephalopathy, unspecified** MCC HIV
CC Excl: 333.92, 344.81, 348.31-348.39
G93.40 Encephalopathy unspecified I-10
- 348.31 Metabolic encephalopathy** MCC HIV
 Septic encephalopathy
EXCLUDES *toxic metabolic encephalopathy (349.82)*
CC Excl: 333.92, 344.81, 348.30, 348.39
TIP: Physician documentation may include "acute confusional state," usually denoting delirium secondary to the encephalopathy.
- 348.39 Other encephalopathy** MCC HIV
EXCLUDES *encephalopathy:*
alcoholic (291.2)
hepatic (572.2)
hypertensive (437.2)
toxic (349.82)
CC Excl: 333.92, 344.81, 348.30-348.31

§ Requires fifth digit. Valid digits are in [brackets] under each code. See appropriate category for codes and definitions.

N Newborn Age: 0

P Pediatric Age: 0-17

M Maternity Age: 12-55

A Adult Age: 15-124

MCC Major CC Condition

CC CC Condition

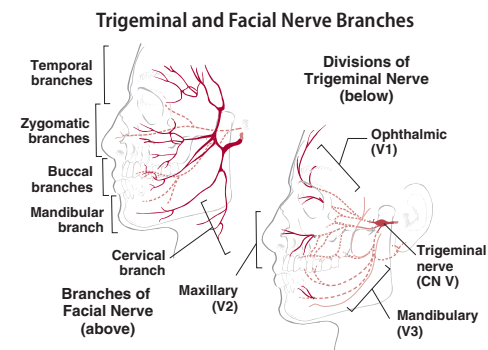
HIV HIV Related Dx

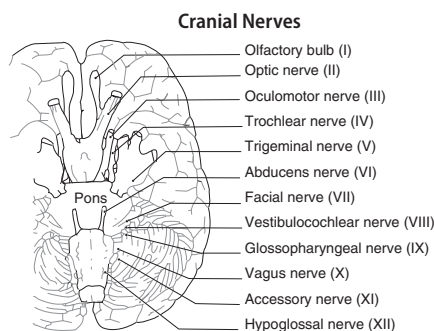
- 348.4 **Compression of brain** MCC
 - Compression } brain (stem)
 - Herniation }
 - Posterior fossa compression syndrome
 - DEF:** Elevated pressure in brain due to blood clot, tumor, fracture, abscess, other condition.
 - CC Excl:** 342.90
 - AHA:** 4Q, '94, 37
 - TIP:** Assign for Arnold-Chiari syndrome, Type I. For Type II, III, or IV, refer to categories 741 and 742.
- 348.5 **Cerebral edema** MCC
 - DEF:** Elevated pressure in the brain due to fluid retention in brain tissues.
 - CC Excl:** 348.5
 - G93.6** Cerebral edema I-10
- ✓5th 348.8 **Other conditions of brain**
 - AHA:** S-O, '87, 9
- 348.81 **Temporal sclerosis**
 - Hippocampal sclerosis
 - Mesial temporal sclerosis
- 348.89 **Other conditions of brain**
 - Cerebral:
 - calcification
 - fungus
- 348.9 **Unspecified condition of brain** HIV
- ✓4th 349 **Other and unspecified disorders of the nervous system**
 - AHA:** 4Q, '08, 109
- 349.0 **Reaction to spinal or lumbar puncture**
 - Headache following lumbar puncture
 - AHA:** 2Q, '99, 9; 3Q, '90, 18
 - G97.1** Other reaction to spinal and lumbar puncture I-10
- 349.1 **Nervous system complications from surgically implanted device** CC
 - EXCLUDES** immediate postoperative complications (997.00–997.09)
 - mechanical complications of nervous system device (996.2)
 - CC Excl:** 2249.60–249.61, 249.80–249.91, 250.60–250.63, 250.80–250.93, 349.1, 349.89–349.9
- 349.2 **Disorders of meninges, not elsewhere classified**
 - Adhesions, meningeal (cerebral) (spinal)
 - Cyst, spinal meninges
 - Meningocele, acquired
 - Pseudomeningocele, acquired
 - AHA:** 1Q, '06, 15; 2Q, '98, 18; 3Q, '94, 4
- ✓5th 349.3 **Dural tear**
 - 349.31 **Accidental puncture or laceration of dura during a procedure** CC
 - Incidental (inadvertent) durotomy
 - CC Excl:** 349.31–349.39, 997.91–997.99, 998.2, 998.81, 998.83–998.9
 - AHA:** 4Q, '08, 109–110
 - TIP:** Do not assign code 998.2 Accidental puncture or laceration during a procedure, for an incidental dural tear.
 - 349.39 **Other dural tear** CC
 - CC Excl:** 349.31–349.39, 997.91–997.99, 998.2, 998.81, 998.83–998.9
- ✓5th 349.8 **Other specified disorders of nervous system**
 - 349.81 **Cerebrospinal fluid rhinorrhea** CC
 - EXCLUDES** cerebrospinal fluid otorrhea (388.61)
 - DEF:** Cerebrospinal fluid discharging from the nose; caused by fracture of frontal bone with tearing of dura mater and arachnoid.
 - CC Excl:** 249.60–249.61, 249.80–249.91, 250.60–250.63, 250.80–250.93, 349.81, 349.89–349.9

- 349.82 **Toxic encephalopathy** MCC
 - Toxic metabolic encephalopathy
 - Use additional E code to identify cause**
 - DEF:** Brain tissue degeneration due to toxic substance.
 - CC Excl:** 013.60–013.66, 017.90–017.96, 036.1, 049.8–049.9, 052.0, 054.3, 058.21–058.29, 062.0–063.9, 072.2, 090.41, 094.81, 130.0, 249.60–249.61, 249.80–249.91, 250.60–250.63, 250.80–250.93, 323.01–323.9, 341.20–341.22, 348.30–348.39, 348.81–348.9, 349.82–349.9
 - AHA:** 4Q, '93, 29
 - G92** Toxic encephalopathy I-10
- 349.89 **Other**
- 349.9 **Unspecified disorders of nervous system** HIV
 - Disorder of nervous system (central) NOS

DISORDERS OF THE PERIPHERAL NERVOUS SYSTEM (350-359)

- EXCLUDES** diseases of:
 - acoustic [8th] nerve (388.5)
 - oculomotor [3rd, 4th, 6th] nerves (378.0–378.9)
 - optic [2nd] nerve (377.0–377.9)
 - peripheral autonomic nerves (337.0–337.9)
 - neuralgia
 - neuritis
 - radiculitis
- NOS or “rheumatic” (729.2)
- peripheral neuritis in pregnancy (646.4)
- ✓4th 350 **Trigeminal nerve disorders**
 - INCLUDES** disorders of 5th cranial nerve
 - 350.1 **Trigeminal neuralgia**
 - Tic douloureux Trigeminal neuralgia NOS
 - Trifacial neuralgia
 - EXCLUDES** postherpetic (053.12)
 - G50.0** Trigeminal neuralgia I-10
 - 350.2 **Atypical face pain**
 - 350.8 **Other specified trigeminal nerve disorders**
 - 350.9 **Trigeminal nerve disorder, unspecified**
- ✓4th 351 **Facial nerve disorders**
 - INCLUDES** disorders of 7th cranial nerve
 - EXCLUDES** that in newborn (767.5)
 - 351.0 **Bell's palsy**
 - Facial palsy
 - DEF:** Unilateral paralysis of face due to lesion on facial nerve; produces facial distortion.
 - G51.0** Bell's palsy I-10
 - 351.1 **Geniculate ganglionitis**
 - Geniculate ganglionitis NOS
 - EXCLUDES** herpetic (053.11)
 - DEF:** Inflammation of tissue at bend in facial nerve.
 - 351.8 **Other facial nerve disorders**
 - Facial myokymia Melkersson's syndrome
 - AHA:** 3Q, '02, 13
 - 351.9 **Facial nerve disorder, unspecified**





✓4th 352 Disorders of other cranial nerves

352.0 Disorders of olfactory [Ist] nerve

352.1 Glossopharyngeal neuralgia

DEF: Pain between throat and ear along petrosal and jugular ganglia.

AHA: 2Q, '02, 8

352.2 Other disorders of glossopharyngeal [9th] nerve

352.3 Disorders of pneumogastric [10th] nerve

Disorders of vagal nerve

EXCLUDES paralysis of vocal cords or larynx (478.30–478.34)

DEF: Nerve disorder affecting ear, tongue, pharynx, larynx, esophagus, viscera and thorax.

352.4 Disorders of accessory [11th] nerve

DEF: Nerve disorder affecting palate, pharynx, larynx, thoracic viscera, sternocleidomastoid and trapezius muscles.

352.5 Disorders of hypoglossal [12th] nerve

DEF: Nerve disorder affecting tongue muscles.

352.6 Multiple cranial nerve palsies

Collet-Sicard syndrome
Polyneuritis cranialis

352.9 Unspecified disorder of cranial nerves

✓4th 353 Nerve root and plexus disorders

EXCLUDES conditions due to:
intervertebral disc disorders (722.0–722.9)
spondylosis (720.0–721.9)
vertebrogenic disorders (723.0–724.9)

353.0 Brachial plexus lesions

Cervical rib syndrome
Costoclavicular syndrome
Scalenus anticus syndrome
Thoracic outlet syndrome

EXCLUDES brachial neuritis or radiculitis NOS (723.4) that in newborn (767.6)

DEF: Acquired disorder in tissue along nerves in shoulder; causes corresponding motor and sensory dysfunction.

AHA: 3Q, '06, 12

353.1 Lumbosacral plexus lesions

DEF: Acquired disorder in tissue along nerves in lower back; causes corresponding motor and sensory dysfunction.

353.2 Cervical root lesions, not elsewhere classified

353.3 Thoracic root lesions, not elsewhere classified

353.4 Lumbosacral root lesions, not elsewhere classified

353.5 Neuralgic amyotrophy

Parsonage-Aldren-Turner syndrome

Code first any associated underlying disease, such as:
diabetes mellitus (249.6, 250.6)

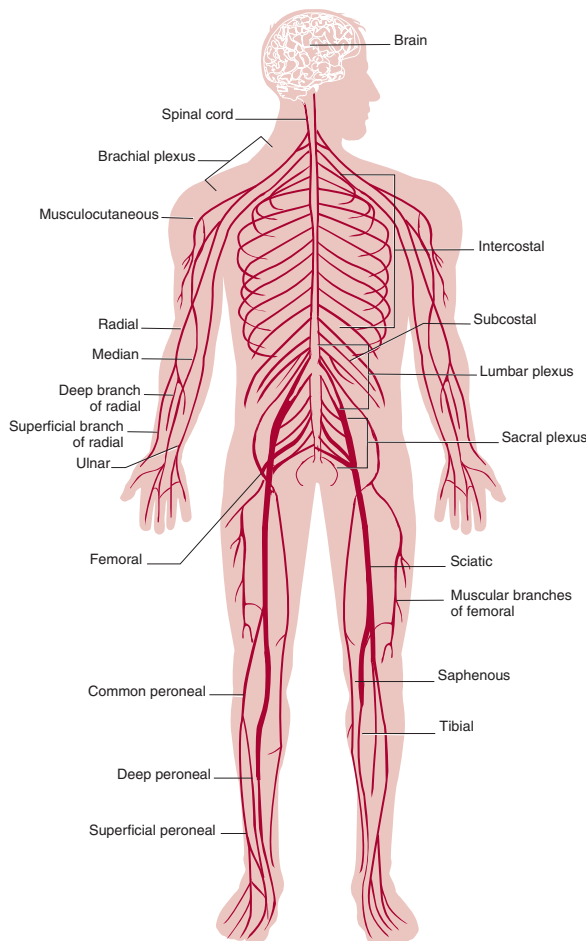
353.6 Phantom limb (syndrome)

DEF: Abnormal tingling or a burning sensation, transient aches, and intermittent or continuous pain perceived as originating in the absent limb.

353.8 Other nerve root and plexus disorders

353.9 Unspecified nerve root and plexus disorder

Peripheral Nervous System



✓4th 354 Mononeuritis of upper limb and mononeuritis multiplex

DEF: Inflammation of a single nerve; known as mononeuritis multiplex when several nerves in unrelated body areas are affected.

354.0 Carpal tunnel syndrome

Median nerve entrapment
Partial thenar atrophy

DEF: Compression of median nerve by tendons; causes pain, tingling, numbness and burning sensation in hand.

G56.00 Carpal tunnel syndrome unspecified side **I-10**

354.1 Other lesion of median nerve

Median nerve neuritis

354.2 Lesion of ulnar nerve

Cubital tunnel syndrome
Tardy ulnar nerve palsy

354.3 Lesion of radial nerve

Acute radial nerve palsy

AHA: N-D, '87, 6

354.4 Causalgia of upper limb

Complex regional pain syndrome type II of the upper limb

EXCLUDES causalgia:
NOS (355.9)
lower limb (355.71)
complex regional pain syndrome type II of the lower limb (355.71)

DEF: Peripheral nerve damage, upper limb; usually due to injury; causes burning sensation and trophic skin changes.

354.5 Mononeuritis multiplex

Combinations of single conditions classifiable to 354 or 355

354.8 Other mononeuritis of upper limb

354.9 Mononeuritis of upper limb, unspecified

✓4th 355 Mononeuritis of lower limb**355.0 Lesion of sciatic nerve****EXCLUDES** sciatica NOS (724.3)**DEF:** Acquired disorder of sciatic nerve; causes motor and sensory dysfunction in back, buttock and leg.**AHA:** 2Q, '89, 12**355.1 Meralgia paresthetica**

Lateral cutaneous femoral nerve of thigh compression or syndrome

DEF: Inguinal ligament entraps lateral femoral cutaneous nerve; causes tingling, pain and numbness along outer thigh.**355.2 Other lesion of femoral nerve****355.3 Lesion of lateral popliteal nerve**

Lesion of common peroneal nerve

355.4 Lesion of medial popliteal nerve**355.5 Tarsal tunnel syndrome****DEF:** Compressed, entrapped posterior tibial nerve; causes tingling, pain and numbness in sole of foot.**355.6 Lesion of plantar nerve**

Morton's metatarsalgia, neuralgia, or neuroma

✓5th 355.7 Other mononeuritis of lower limb**355.71 Causalgia of lower limb****EXCLUDES** causalgia:
NOS (355.9)
upper limb (354.4)
complex regional pain syndrome
type II of upper limb (354.4)**DEF:** Dysfunction of lower limb peripheral nerve, usually due to injury; causes burning pain and trophic skin changes.**355.79 Other mononeuritis of lower limb****355.8 Mononeuritis of lower limb, unspecified****355.9 Mononeuritis of unspecified site**Causalgia NOS
Complex regional pain syndrome NOS**EXCLUDES** causalgia:
lower limb (355.71)
upper limb (354.4)
complex regional pain syndrome:
lower limb (355.71)
upper limb (354.4)**G58.9** Mononeuropathy unspecified **I-10****✓4th 356 Hereditary and idiopathic peripheral neuropathy****356.0 Hereditary peripheral neuropathy**

Déjérine-Sottas disease

356.1 Peroneal muscular atrophyCharcôt-Marie-Tooth disease
Neuropathic muscular atrophy**DEF:** Genetic disorder, in muscles innervated by peroneal nerves; symptoms include muscle wasting in lower limbs and locomotor difficulties.**356.2 Hereditary sensory neuropathy****DEF:** Inherited disorder in dorsal root ganglia, optic nerve, and cerebellum, causing sensory losses, shooting pains, and foot ulcers.**356.3 Refsum's disease** **CC**

Heredopathia atactica polyneuritiformis

DEF: Genetic disorder of lipid metabolism; causes persistent, painful inflammation of nerves and retinitis pigmentosa.
CC Excl: 350.1-357.9**356.4 Idiopathic progressive polyneuropathy****356.8 Other specified idiopathic peripheral neuropathy**

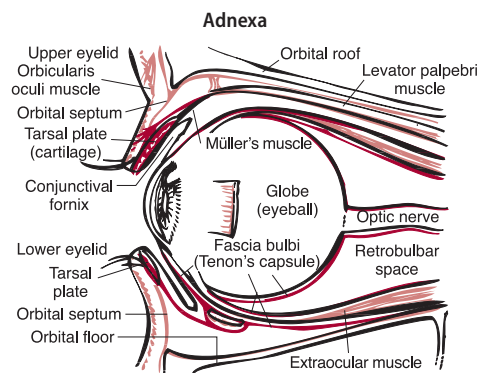
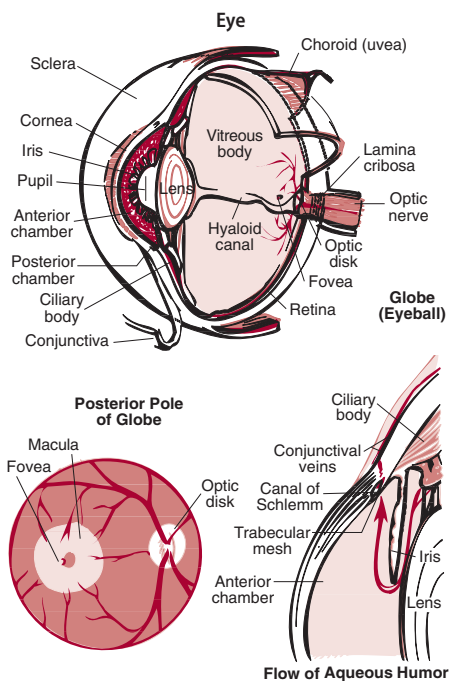
Supranuclear paralysis

356.9 Unspecified**G60.9** Hereditary & idiopathic neuropathy unspecified **I-10****✓4th 357 Inflammatory and toxic neuropathy****357.0 Acute infective polyneuritis** **CC**Guillain-Barré syndrome
Postinfectious polyneuritis**DEF:** Guillain-Barré syndrome: acute demyelinating polyneuropathy preceded by viral illness (i.e., herpes, cytomegalovirus [CMV], Epstein-Barr virus [EBV]) or a bacterial illness; areflexic motor paralysis with mild sensory disturbance and acellular rise in spinal fluid protein.**CC Excl:** 003.21, 013.00-013.16, 036.0, 036.89-036.9, 041.81-041.9, 047.0-047.9, 049.0-049.1, 053.0, 054.72, 072.1, 090.42, 091.81, 094.2, 098.89, 100.81, 112.83, 114.2, 115.01, 115.11, 115.91, 130.0, 139.8, 320.0-322.9, 349.89-349.9, 357.0
AHA: 2Q, '98, 12**357.1 Polyneuropathy in collagen vascular disease***Code first underlying disease, as:*
disseminated lupus erythematosus (710.0)
polyarteritis nodosa (446.0)
rheumatoid arthritis (714.0)**357.2 Polyneuropathy in diabetes***Code first underlying disease (249.6, 250.6)***AHA:** ▶2Q, '09, 13, 15; ◀3Q, '08, 5; 4Q, '03, 105; 2Q, '92, 15; 3Q, '91, 9**357.3 Polyneuropathy in malignant disease***Code first underlying disease (140.0-208.9)***357.4 Polyneuropathy in other diseases classified elsewhere***Code first underlying disease, as:*
amyloidosis (277.30-277.39)
beriberi (265.0)
chronic uremia (585.9)
deficiency of B vitamins (266.0-266.9)
diphtheria (032.0-032.9)
hypoglycemia (251.2)
pellagra (265.2)
porphyria (277.1)
sarcoidosis (135)
uremia NOS (586)**EXCLUDES** polyneuropathy in:
herpes zoster (053.13)
mumps (072.72)**AHA:** 2Q, '08, 8; 2Q, '98, 15**G63** Polyneuropathy in diseases classified elsewhere **I-10****357.5 Alcoholic polyneuropathy****357.6 Polyneuropathy due to drugs***Use additional E code to identify drug***357.7 Polyneuropathy due to other toxic agents***Use additional E code to identify toxic agent***✓5th 357.8 Other****AHA:** 4Q, '02, 47; 2Q, '98, 12**357.81 Chronic inflammatory demyelinating polyneuritis** **CC****DEF:** Inflammation of peripheral nerves resulting in destruction of myelin sheath; associated with diabetes mellitus, dysproteinemias, renal failure and malnutrition; symptoms are tingling, numbness, burning pain, diminished tendon reflexes, weakness, of lower extremities.**CC Excl:** 351.0-353.5, 353.8-356.9, 357.81-357.89**357.82 Critical illness polyneuropathy** **CC**

Acute motor neuropathy

DEF: An acute axonal neuropathy, both sensory and motor, that is associated with Systemic Inflammatory Response Syndrome (SIRS).**CC Excl:** 351.0-353.5, 353.8-356.9, 357.81-357.9**AHA:** 4Q, '03, 111**357.89 Other inflammatory and toxic neuropathy****357.9 Unspecified**

<p>✓4th 358 Myoneural disorders</p> <p>✓5th 358.0 Myasthenia gravis DEF: Autoimmune disorder of acetylcholine at neuromuscular junction; causing fatigue of voluntary muscles. AHA: 4Q, '03, 59</p> <p>358.00 Myasthenia gravis without (acute) exacerbation Myasthenia gravis NOS G70.00 Myasthenia gravis without (acute) exacerbation I-10</p> <p>358.01 Myasthenia gravis with (acute) exacerbation MCC Myasthenia gravis in crisis CC Excl: 249.60-249.61, 249.80-249.91, 250.60-250.63, 250.80-250.93, 349.89-349.9, 358.00-358.1 AHA: 4Q, '07, 109; 1Q, '05, 4; 4Q, '04, 139</p> <p>358.1 Myasthenic syndromes in diseases classified elsewhere CC Eaton-Lambert syndrome from stated cause classified elsewhere <i>Code first underlying disease, as:</i> botulism (005.1, 040.41-040.42) hypothyroidism (244.0-244.9) malignant neoplasm (140.0-208.9) pernicious anemia (281.0) thyrotoxicosis (242.0-242.9) CC Excl: See code: 358.01</p> <p>358.2 Toxic myoneural disorders Use additional E code to identify toxic agent</p> <p>358.8 Other specified myoneural disorders</p> <p>358.9 Myoneural disorders, unspecified AHA: 2Q, '02, 16</p> <p>✓4th 359 Muscular dystrophies and other myopathies EXCLUDES <i>idiopathic polymyositis (710.4)</i></p> <p>359.0 Congenital hereditary muscular dystrophy CC Benign congenital myopathy Central core disease Centronuclear myopathy Myotubular myopathy Nemaline body disease EXCLUDES <i>arthrogryposis multiplex congenita (754.89)</i> DEF: Genetic disorder; causing progressive or nonprogressive muscle weakness. CC Excl: 249.60-249.61, 249.80-249.91, 250.60-250.63, 250.80-250.93, 349.89-349.9, 359.0-359.1</p> <p>359.1 Hereditary progressive muscular dystrophy CC Muscular dystrophy: NOS distal Duchenne Erb's fascioscapulohumeral Gower's Landouzy-Déjérine limb-girdle ocular oculopharyngeal DEF: Genetic degenerative, muscle disease; causes progressive weakness, wasting of muscle with no nerve involvement. CC Excl: See code: 359.0</p> <p>✓5th 359.2 Myotonic disorders EXCLUDES <i>periodic paralysis (359.3)</i> DEF: Impaired movement due to spasmodic, rigid muscles. AHA: 4Q, '07, 75</p> <p>359.21 Myotonic muscular dystrophy Dystrophia myotonica Myotonia atrophica Myotonic dystrophy Proximal myotonic myopathy [PROMM] Steinert's disease</p>	<p>359.22 Myotonia congenita Acetazolamide responsive myotonia congenita Dominant form [Thomsen's disease] ►Myotonia levior◄ Recessive form [Becker's disease]</p> <p>359.23 Myotonic chondrodystrophy Congenital myotonic chondrodystrophy Schwartz-Jampel disease</p> <p>359.24 Drug induced myotonia Use additional E code to identify drug</p> <p>359.29 Other specified myotonic disorder Myotonia fluctuans Myotonia permanens Paramyotonia congenita (of von Eulenburg)</p> <p>359.3 Periodic paralysis Familial periodic paralysis Hypokalemic familial periodic paralysis Hyperkalemic periodic paralysis Hypokalemic periodic paralysis Potassium sensitive periodic paralysis EXCLUDES <i>paramyotonia congenita (of von Eulenburg) (359.29)</i> DEF: Genetic disorder; characterized by rapidly progressive flaccid paralysis; attacks often occur after exercise or exposure to cold or dietary changes.</p> <p>359.4 Toxic myopathy CC Use additional E code to identify toxic agent DEF: Muscle disorder caused by toxic agent. CC Excl: 349.89-349.9, 358.00-359.6, 359.81-359.9 AHA: 1Q, '88, 5</p> <p>359.5 Myopathy in endocrine diseases classified elsewhere <i>Code first underlying disease, as:</i> Addison's disease (255.41) Cushing's syndrome (255.0) hypopituitarism (253.2) myxedema (244.0-244.9) thyrotoxicosis (242.0-242.9) DEF: Muscle disorder secondary to dysfunction in hormone secretion.</p> <p>359.6 Symptomatic inflammatory myopathy in diseases classified elsewhere CC <i>Code first underlying disease, as:</i> amyloidosis (277.30-277.39) disseminated lupus erythematosus (710.0) malignant neoplasm (140.0-208.9) polyarteritis nodosa (446.0) rheumatoid arthritis (714.0) sarcoidosis (135) scleroderma (710.1) Sjögren's disease (710.2) CC Excl: 249.60-249.61, 249.80-249.91, 250.60-250.63, 250.80-250.93, 349.89-349.9, 358.00-359.6, 359.81-359.9</p> <p>● ✓5th 359.7 Inflammatory and immune myopathies, NEC</p> <p>● 359.71 Inclusion body myositis IBM</p> <p>● 359.79 Other inflammatory and immune myopathies, NEC Inflammatory myopathy NOS</p> <p>✓5th 359.8 Other myopathies AHA: 4Q, '02, 47; 3Q, '90, 17</p> <p>359.81 Critical illness myopathy CC Acute necrotizing myopathy Acute quadriplegic myopathy Intensive care (ICU) myopathy Myopathy of critical illness CC Excl: 358.1-359.6, 359.81-359.9</p> <p>359.89 Other myopathies</p> <p>359.9 Myopathy, unspecified</p>
---	--



DISORDERS OF THE EYE AND ADNEXA (360-379)

Use additional external cause code, if applicable, to identify the cause of the eye condition

- ✓4th **360 Disorders of the globe**
 - INCLUDES** disorders affecting multiple structures of eye
 - ✓5th **360.0 Purulent endophthalmitis**
 - EXCLUDES** bleb associated endophthalmitis (379.63)
 - 360.00 Purulent endophthalmitis, unspecified** CC
CC Excl: 360.00-360.04, 360.13, 360.19, 364.05
 - 360.01 Acute endophthalmitis** CC
CC Excl: See code 360.00
 - 360.02 Panophthalmitis** CC
CC Excl: See code 360.00
 - 360.03 Chronic endophthalmitis**
 - 360.04 Vitreous abscess** CC
CC Excl: 360.00-360.19
 - ✓5th **360.1 Other endophthalmitis**
 - EXCLUDES** bleb associated endophthalmitis (379.63)
 - 360.11 Sympathetic uveitis** CC
DEF: Inflammation of vascular layer of uninjured eye; follows injury to other eye.
CC Excl: 360.11-360.12
 - 360.12 Panuveitis** CC
DEF: Inflammation of entire vascular layer of eye, including choroid, iris and ciliary body.
CC Excl: 360.11-360.12
 - 360.13 Parasitic endophthalmitis NOS** CC
DEF: Parasitic infection causing inflammation of the entire eye.
CC Excl: 360.00-360.04, 360.13, 360.19, 364.05
 - 360.14 Ophthalmia nodosa**
DEF: Conjunctival inflammation caused by embedded hairs.
 - 360.19 Other** CC
Phacoanaphylactic endophthalmitis
CC Excl: 360.00-360.04, 360.13, 360.19, 364.05
 - ✓5th **360.2 Degenerative disorders of globe**
 - AHA: 3Q, '91, 3
 - 360.20 Degenerative disorder of globe, unspecified**

- 360.21 Progressive high (degenerative) myopia**
Malignant myopia
DEF: Severe, progressive nearsightedness in adults, complicated by serious disease of the choroid; leads to retinal detachment and blindness.
- 360.23 Siderosis**
DEF: Iron pigment deposits within tissue of eyeball; caused by high iron content of blood.
- 360.24 Other metallosis**
Chalcosis
DEF: Metal deposits, other than iron, within eyeball tissues.
- 360.29 Other**
EXCLUDES xerophthalmia (264.7)
- ✓5th **360.3 Hypotony of eye**
- 360.30 Hypotony, unspecified**
DEF: Low osmotic pressure causing lack of tone, tension and strength.
- 360.31 Primary hypotony**
- 360.32 Ocular fistula causing hypotony**
DEF: Low intraocular pressure due to leak through abnormal passage.
- 360.33 Hypotony associated with other ocular disorders**
- 360.34 Flat anterior chamber**
DEF: Low pressure behind cornea, causing compression.
- ✓5th **360.4 Degenerated conditions of globe**
- 360.40 Degenerated globe or eye, unspecified**
- 360.41 Blind hypotensive eye**
Atrophy of globe
Phthisis bulbi
DEF: Vision loss due to extremely low intraocular pressure.
- 360.42 Blind hypertensive eye**
Absolute glaucoma
DEF: Vision loss due to painful, high intraocular pressure.
- 360.43 Hemophthalmos, except current injury**
EXCLUDES traumatic (871.0-871.9, 921.0-921.9)
DEF: Pool of blood within eyeball, not from current injury.
- 360.44 Leucocoria**
DEF: Whitish mass or reflex in the pupil behind lens; also called cat's eye reflex; often indicative of retinoblastoma.
- ✓5th **360.5 Retained (old) intraocular foreign body, magnetic**
EXCLUDES current penetrating injury with magnetic foreign body (871.5)
retained (old) foreign body of orbit (376.6)
- 360.50 Foreign body, magnetic, intraocular, unspecified**
- 360.51 Foreign body, magnetic, in anterior chamber**
- 360.52 Foreign body, magnetic, in iris or ciliary body**

- 360.53 Foreign body, magnetic, in lens
- 360.54 Foreign body, magnetic, in vitreous
- 360.55 Foreign body, magnetic, in posterior wall
- 360.59 Foreign body, magnetic, in other or multiple sites
- ✓5th 360.6 Retained (old) intraocular foreign body, nonmagnetic
Retained (old) foreign body:
NOS
nonmagnetic
EXCLUDES *current penetrating injury with (nonmagnetic) foreign body (871.6)*
retained (old) foreign body in orbit (376.6)
- 360.60 Foreign body, intraocular, unspecified
- 360.61 Foreign body in anterior chamber
- 360.62 Foreign body in iris or ciliary body
- 360.63 Foreign body in lens
- 360.64 Foreign body in vitreous
- 360.65 Foreign body in posterior wall
- 360.69 Foreign body in other or multiple sites
- ✓5th 360.8 Other disorders of globe
- 360.81 Luxation of globe
DEF: Displacement of eyeball.
- 360.89 Other
- 360.9 Unspecified disorder of globe
- ✓4th 361 Retinal detachments and defects
DEF: Light-sensitive layer at back of eye, separates from blood supply; disrupting vision.
- ✓5th 361.0 Retinal detachment with retinal defect
Rhegmatogenous retinal detachment
EXCLUDES *detachment of retinal pigment epithelium (362.42-362.43)*
retinal detachment (serous) (without defect) (361.2)
- 361.00 Retinal detachment with retinal defect, unspecified
- 361.01 Recent detachment, partial, with single defect
- 361.02 Recent detachment, partial, with multiple defects
- 361.03 Recent detachment, partial, with giant tear
- 361.04 Recent detachment, partial, with retinal dialysis
Dialysis (juvenile) of retina (with detachment)
- 361.05 Recent detachment, total or subtotal
- 361.06 Old detachment, partial
Delimited old retinal detachment
- 361.07 Old detachment, total or subtotal
- ✓5th 361.1 Retinoschisis and retinal cysts
EXCLUDES *juvenile retinoschisis (362.73)*
microcystoid degeneration of retina (362.62)
parasitic cyst of retina (360.13)
- 361.10 Retinoschisis, unspecified
DEF: Separation of retina due to degenerative process of aging; should not be confused with acute retinal detachment.
- 361.11 Flat retinoschisis
DEF: Slow, progressive split of retinal sensory layers
- 361.12 Bullous retinoschisis
DEF: Fluid retention between split retinal sensory layers.
- 361.13 Primary retinal cysts
- 361.14 Secondary retinal cysts
- 361.19 Other
Pseudocyst of retina
- 361.2 Serous retinal detachment **CC**
Retinal detachment without retinal defect
EXCLUDES *central serous retinopathy (362.41)*
retinal pigment epithelium detachment (362.42-362.43)
CC Excl: 361.00-361.9, 362.40-362.43
- ✓5th 361.3 Retinal defects without detachment **CC**
EXCLUDES *chorioretinal scars after surgery for detachment (363.30-363.35)*
peripheral retinal degeneration without defect (362.60-362.66)
- 361.30 Retinal defect, unspecified
Retinal break(s) NOS
- 361.31 Round hole of retina without detachment
- 361.32 Horseshoe tear of retina without detachment
Operculum of retina without mention of detachment
- 361.33 Multiple defects of retina without detachment
- ✓5th 361.8 Other forms of retinal detachment **CC**
- 361.81 Traction detachment of retina **CC**
Traction detachment with vitreoretinal organization
CC Excl: 361.00-361.9, 362.40-362.43
- 361.89 Other **CC**
CC Excl: 361.00-361.9, 362.40-362.43
AHA: 3Q, '99, 12
- 361.9 Unspecified retinal detachment **CC**
CC Excl: 361.00-361.9, 362.40-362.43
AHA: N-D, '87, 10
- ✓4th 362 Other retinal disorders
- EXCLUDES** *chorioretinal scars (363.30-363.35)*
chorioretinitis (363.0-363.2)
- ✓5th 362.0 Diabetic retinopathy
Code first diabetes (249.5, 250.5)
DEF: Retinal changes in diabetes of long duration; causes hemorrhages, microaneurysms, waxy deposits and proliferative noninflammatory degenerative disease of retina.
AHA: 4Q, '05, 65; 3Q, '91, 8
- 362.01 **Background diabetic retinopathy**
Diabetic retinal microaneurysms
Diabetic retinopathy NOS
- 362.02 **Proliferative diabetic retinopathy**
DEF: Occurrence of the ischemic effects of vessel blockages result in neovascularization; new blood vessels begin to form to compensate for restricted blood flow; multiple areas of the retina and inner vitreous may be affected.
AHA: 3Q, '96, 5
- 362.03 **Nonproliferative diabetic retinopathy NOS**
- 362.04 **Mild nonproliferative diabetic retinopathy**
DEF: Early stages of degenerative condition of the retina due to diabetes; microaneurysm formation; small balloon-like swelling of the retinal vessels.
- 362.05 **Moderate nonproliferative diabetic retinopathy**
DEF: Stage of degenerative condition of the retina due to diabetes with pronounced microaneurysms; vessel blockages can occur.
- 362.06 **Severe nonproliferative diabetic retinopathy**
DEF: Stage of degenerative condition of the retina due to diabetes in which vascular breakdown in the retina results in multiple vascular blockages, or "beadings," with intraretinal hemorrhages.
AHA: 4Q, '05, 67

- 362.07 **Diabetic macular edema**
Note: Code 362.07 must be used with a code for diabetic retinopathy (362.01-362.06)
 Diabetic retinal edema
DEF: Leakage from retinal blood vessels causes swelling of the macula and impaired vision; exudates or plaques may develop in the posterior pole of the retina due to the breakdown of retinal vasculature.
- ✓5th 362.1 **Other background retinopathy and retinal vascular changes**
 - 362.10 **Background retinopathy, unspecified**
AHA: 1Q, '06, 12
 - 362.11 **Hypertensive retinopathy**
DEF: Retinal irregularities caused by systemic hypertension.
AHA: 3Q, '90, 3
 - 362.12 **Exudative retinopathy**
 Coats' syndrome
AHA: 3Q, '99, 12
 - 362.13 **Changes in vascular appearance**
 Vascular sheathing of retina
Use additional code for any associated atherosclerosis (440.8)
 - 362.14 **Retinal microaneurysms NOS**
DEF: Microscopic dilation of retinal vessels in nondiabetic.
 - 362.15 **Retinal telangiectasia**
DEF: Dilation of blood vessels of the retina.
 - 362.16 **Retinal neovascularization NOS**
 Neovascularization: choroidal subretinal
DEF: New and abnormal vascular growth in the retina.
 - 362.17 **Other intraretinal microvascular abnormalities**
 Retinal sclerosis Retinal varices
 - 362.18 **Retinal vasculitis**
 Eales' disease Retinal:
 Retinal: perivasculitis
 arteritis phlebitis
 endarteritis
DEF: Inflammation of retinal blood vessels.
- ✓5th 362.2 **Other proliferative retinopathy**
AHA: ▶4Q, '08, 110-111 ◀
 - 362.20 **Retinopathy of prematurity, unspecified**
 Retinopathy of prematurity NOS
 - 362.21 **Retrolental fibroplasia**
 Cicatricial retinopathy of prematurity
DEF: Fibrous tissue in vitreous, from retina to lens, causing blindness; associated with premature infants requiring high amounts of oxygen.
 - 362.22 **Retinopathy of prematurity, stage 0**
 - 362.23 **Retinopathy of prematurity, stage 1**
 - 362.24 **Retinopathy of prematurity, stage 2**
 - 362.25 **Retinopathy of prematurity, stage 3**
 - 362.26 **Retinopathy of prematurity, stage 4**
 - 362.27 **Retinopathy of prematurity, stage 5**
 - 362.29 **Other nondiabetic proliferative retinopathy**
AHA: 3Q, '96, 5
- ✓5th 362.3 **Retinal vascular occlusion**
DEF: Obstructed blood flow to and from retina.
 - 362.30 **Retinal vascular occlusion, unspecified** cc
CC Excl: 362.30-362.37
 - 362.31 **Central retinal artery occlusion** cc
CC Excl: See code: 362.30
 - 362.32 **Arterial branch occlusion** cc
CC Excl: See code: 362.30

- 362.33 **Partial arterial occlusion** cc
 Hollenhorst plaque
 Retinal microembolism
CC Excl: See code: 362.30
- 362.34 **Transient arterial occlusion** cc
 Amaurosis fugax
CC Excl: See code: 362.30
AHA: 1Q, '00, 16
- 362.35 **Central retinal vein occlusion** cc
CC Excl: See code: 362.30
AHA: 2Q, '93, 6
- 362.36 **Venous tributary (branch) occlusion**
- 362.37 **Venous engorgement**
 Occlusion:
 incipient } of retinal vein
 partial }
- ✓5th 362.4 **Separation of retinal layers**
EXCLUDES retinal detachment (serous) (361.2)
 rhegmatogenous (361.00-361.07)
- 362.40 **Retinal layer separation, unspecified** cc
CC Excl: 361.00-361.9, 362.40-362.43
- 362.41 **Central serous retinopathy**
DEF: Serous-filled blister causing detachment of retina from pigment epithelium.
- 362.42 **Serous detachment of retinal pigment epithelium** cc
 Exudative detachment of retinal pigment epithelium
CC Excl: See code: 362.40
DEF: Blister of fatty fluid causing detachment of retina from pigment epithelium.
- 362.43 **Hemorrhagic detachment of retinal pigment epithelium** cc
CC Excl: See code: 362.40
DEF: Blood-filled blister causing detachment of retina from pigment epithelium.
- ✓5th 362.5 **Degeneration of macula and posterior pole**
EXCLUDES degeneration of optic disc (377.21-377.24)
 hereditary retinal degeneration [dystrophy] (362.70-362.77)
- 362.50 **Macular degeneration (senile), unspecified**
- 362.51 **Nonexudative senile macular degeneration**
 Senile macular degeneration:
 atrophic
 dry
- 362.52 **Exudative senile macular degeneration**
 Kuhnt-Junius degeneration
 Senile macular degeneration:
 disciform
 wet
DEF: Leakage in macular blood vessels with loss of visual acuity.
- 362.53 **Cystoid macular degeneration**
 Cystoid macular edema
DEF: Retinal swelling and cyst formation in macula.
- 362.54 **Macular cyst, hole, or pseudohole**
- 362.55 **Toxic maculopathy**
Use additional E code to identify drug, if drug induced
- 362.56 **Macular puckering**
 Preretinal fibrosis
- 362.57 **Drusen (degenerative)**
DEF: White, hyaline deposits on Bruch's membrane (lamina basalis choroideae).

- ✓5th 362.6 Peripheral retinal degenerations
EXCLUDES hereditary retinal degeneration [dystrophy] (362.70-362.77)
 retinal degeneration with retinal defect (361.00-361.07)
- 362.60 Peripheral retinal degeneration, unspecified
- 362.61 Paving stone degeneration
DEF: Degeneration of peripheral retina; causes thinning through which choroid is visible.
- 362.62 Microcystoid degeneration
 Blessig's cysts Iwanoff's cysts
- 362.63 Lattice degeneration
 Palisade degeneration of retina
DEF: Degeneration of retina; often bilateral, usually benign; characterized by lines intersecting at irregular intervals in peripheral retina; retinal thinning and retinal holes may occur.
- 362.64 Senile reticular degeneration
DEF: Net-like appearance of retina; sign of degeneration.
- 362.65 Secondary pigmentary degeneration
 Pseudoretinitis pigmentosa
- 362.66 Secondary vitreoretinal degenerations
- ✓5th 362.7 Hereditary retinal dystrophies
DEF: Genetically induced progressive changes in retina.
- 362.70 Hereditary retinal dystrophy, unspecified
- 362.71 **Retinal dystrophy in systemic or cerebroretinal lipidoses**
Code first underlying disease, as:
 cerebroretinal lipidoses (330.1)
 systemic lipidoses (272.7)
- 362.72 **Retinal dystrophy in other systemic disorders and syndromes**
Code first underlying disease, as:
 Bassen-Kornzweig syndrome (272.5)
 Refsum's disease (356.3)
- 362.73 Vitreoretinal dystrophies
 Juvenile retinoschisis
- 362.74 Pigmentary retinal dystrophy
 Retinal dystrophy, albipunctate
 Retinitis pigmentosa
- 362.75 Other dystrophies primarily involving the sensory retina
 Progressive cone(-rod) dystrophy
 Stargardt's disease
- 362.76 Dystrophies primarily involving the retinal pigment epithelium
 Fundus flavimaculatus Vitelliform dystrophy
- 362.77 Dystrophies primarily involving Bruch's membrane
 Dystrophy:
 hyaline
 pseudoinflammatory foveal
 Hereditary drusen
- ✓5th 362.8 Other retinal disorders
EXCLUDES chorioretinal inflammations (363.0-363.2)
 chorioretinal scars (363.30-363.35)
- 362.81 Retinal hemorrhage
 Hemorrhage:
 preretinal
 retinal (deep) (superficial)
 subretinal
AHA: 4Q, 96, 43
- 362.82 Retinal exudates and deposits
- 362.83 Retinal edema
 Retinal:
 cotton wool spots
 edema (localized) (macular) (peripheral)
DEF: Retinal swelling due to fluid accumulation.
- 362.84 Retinal ischemia **CC**
CC Excl: 362.81-362.89
DEF: Reduced retinal blood supply.
- 362.85 Retinal nerve fiber bundle defects
- 362.89 Other retinal disorders
- 362.9 Unspecified retinal disorder
- ✓4th 363 Chorioretinal inflammations, scars, and other disorders of choroid
- ✓5th 363.0 Focal chorioretinitis and focal retinochoroiditis
EXCLUDES focal chorioretinitis or retinochoroiditis in:
 histoplasmosis (115.02, 115.12, 115.92)
 toxoplasmosis (130.2)
 congenital infection (771.2)
- 363.00 Focal chorioretinitis, unspecified
 Focal:
 choroiditis or chorioretinitis NOS
 retinitis or retinochoroiditis NOS
- 363.01 Focal choroiditis and chorioretinitis, juxtapapillary
- 363.03 Focal choroiditis and chorioretinitis of other posterior pole
- 363.04 Focal choroiditis and chorioretinitis, peripheral
- 363.05 Focal retinitis and retinochoroiditis, juxtapapillary
 Neuroretinitis
- 363.06 Focal retinitis and retinochoroiditis, macular or paramacular
- 363.07 Focal retinitis and retinochoroiditis of other posterior pole
- 363.08 Focal retinitis and retinochoroiditis, peripheral
- ✓5th 363.1 Disseminated chorioretinitis and disseminated retinochoroiditis
EXCLUDES disseminated choroiditis or chorioretinitis in
 secondary syphilis (091.51)
 neurosyphilitic disseminated retinitis or
 retinochoroiditis (094.83)
 retinal (peri)vasculitis (362.18)
- 363.10 Disseminated chorioretinitis, unspecified **CC**
 Disseminated:
 choroiditis or chorioretinitis NOS
 retinitis or retinochoroiditis NOS
CC Excl: 363.00-363.22
- 363.11 Disseminated choroiditis and chorioretinitis, posterior pole **CC**
CC Excl: See code: 363.10
- 363.12 Disseminated choroiditis and chorioretinitis, peripheral **CC**
CC Excl: See code: 363.10
- 363.13 Disseminated choroiditis and chorioretinitis, generalized **CC**
Code first any underlying disease, as:
 tuberculosis (017.3)
CC Excl: See code: 363.10
- 363.14 Disseminated retinitis and retinochoroiditis, metastatic **CC**
CC Excl: See code: 363.10
- 363.15 Disseminated retinitis and retinochoroiditis, pigment epitheliopathy **CC**
 Acute posterior multifocal placoid pigment epitheliopathy
DEF: Widespread inflammation of retina and choroid; characterized by pigmented epithelium involvement.
CC Excl: See code: 363.10

- ✓5th 363.2 Other and unspecified forms of chorioretinitis and retinochoroiditis
 - EXCLUDES** panophthalmitis (360.02)
sympathetic uveitis (360.11)
uveitis NOS (364.3)
- 363.20 Chorioretinitis, unspecified cc
 - Choroiditis NOS
 - Retinitis NOS
 - Uveitis, posterior NOS
 - CC Excl:** See code: 363.10
- 363.21 Pars planitis
 - Posterior cyclitis
 - DEF:** Inflammation of peripheral retina and ciliary body; characterized by bands of white cells.
- 363.22 Harada's disease
 - DEF:** Retinal detachment and bilateral widespread exudative choroiditis; symptoms include headache, vomiting, increased lymphocytes in cerebrospinal fluid; with temporary or permanent deafness.
- ✓5th 363.3 Chorioretinal scars
 - Scar (postinflammatory) (postsurgical) (posttraumatic):
choroid
retina
- 363.30 Chorioretinal scar, unspecified
- 363.31 Solar retinopathy
 - DEF:** Retinal scarring caused by solar radiation.
- 363.32 Other macular scars
- 363.33 Other scars of posterior pole
- 363.34 Peripheral scars
- 363.35 Disseminated scars
- ✓5th 363.4 Choroidal degenerations
 - 363.40 Choroidal degeneration, unspecified
 - Choroidal sclerosis NOS
 - 363.41 Senile atrophy of choroid
 - DEF:** Wasting away of choroid; due to aging.
 - 363.42 Diffuse secondary atrophy of choroid
 - DEF:** Wasting away of choroid in systemic disease.
 - 363.43 Angioid streaks of choroid
 - DEF:** Degeneration of choroid; characterized by dark brown streaks radiating from optic disk; occurs with pseudoxanthoma, elasticum or Paget's disease.
- ✓5th 363.5 Hereditary choroidal dystrophies
 - Hereditary choroidal atrophy:
partial [choriocapillaris]
total [all vessels]
- 363.50 Hereditary choroidal dystrophy or atrophy, unspecified
- 363.51 Circumpapillary dystrophy of choroid, partial
- 363.52 Circumpapillary dystrophy of choroid, total
 - Helicoid dystrophy of choroid
- 363.53 Central dystrophy of choroid, partial
 - Dystrophy, choroidal:
central areolar
circinate
- 363.54 Central choroidal atrophy, total
 - Dystrophy, choroidal: Dystrophy, choroidal:
central gyrate serpiginous
- 363.55 Choroideremia
 - DEF:** Hereditary choroid degeneration, occurs in first decade; characterized by constricted visual field and ultimately blindness in males; less debilitating in females.
- 363.56 Other diffuse or generalized dystrophy, partial
 - Diffuse choroidal sclerosis
- 363.57 Other diffuse or generalized dystrophy, total
 - Generalized gyrate atrophy, choroid
- ✓5th 363.6 Choroidal hemorrhage and rupture
- 363.61 Choroidal hemorrhage, unspecified

- 363.62 Expulsive choroidal hemorrhage
- 363.63 Choroidal rupture cc
 - CC Excl:** 363.61-363.9
- ✓5th 363.7 Choroidal detachment cc
 - 363.70 Choroidal detachment, unspecified cc
 - CC Excl:** See code: 363.63
 - 363.71 Serous choroidal detachment cc
 - DEF:** Detachment of choroid from sclera; due to blister of serous fluid.
 - CC Excl:** See code: 363.63
 - 363.72 Hemorrhagic choroidal detachment cc
 - DEF:** Detachment of choroid from sclera; due to blood-filled blister.
 - CC Excl:** See code: 363.63
- 363.8 Other disorders of choroid
 - AHA:** 1Q, 06, 12
- 363.9 Unspecified disorder of choroid
- ✓4th 364 Disorders of iris and ciliary body
 - ✓5th 364.0 Acute and subacute iridocyclitis
 - Anterior uveitis
 - Cyclitis
 - Iridocyclitis
 - Iritis

} acute, subacute

 - EXCLUDES** gonococcal (098.41)
herpes simplex (054.44)
herpes zoster (053.22)
 - 364.00 Acute and subacute iridocyclitis, unspecified cc
 - CC Excl:** 364.00-364.3
 - 364.01 Primary iridocyclitis cc
 - CC Excl:** See code: 364.00
 - 364.02 Recurrent iridocyclitis cc
 - CC Excl:** See code: 364.00
 - 364.03 Secondary iridocyclitis, infectious cc
 - CC Excl:** See code: 364.00
 - 364.04 Secondary iridocyclitis, noninfectious
 - Aqueous: Aqueous:
cells flare
fibrin
 - 364.05 Hypopyon
 - DEF:** Accumulation of white blood cells between cornea and lens.
- ✓5th 364.1 Chronic iridocyclitis
 - EXCLUDES** posterior cyclitis (363.21)
- 364.10 Chronic iridocyclitis, unspecified
- 364.11 Chronic iridocyclitis in diseases classified elsewhere
 - Code first underlying disease, as:*
sarcoidosis (135)
tuberculosis (017.3)
 - EXCLUDES** syphilitic iridocyclitis (091.52)
 - DEF:** Persistent inflammation of iris and ciliary body; due to underlying disease or condition.
- ✓5th 364.2 Certain types of iridocyclitis
 - EXCLUDES** posterior cyclitis (363.21)
sympathetic uveitis (360.11)
- 364.21 Fuchs' heterochromic cyclitis
 - DEF:** Chronic cyclitis characterized by differences in the color of the two irises; the lighter iris appears in the inflamed eye.
- 364.22 Glaucomatocyclitic crises cc
 - DEF:** An uncommon inflammatory unilateral eye condition, characteristic recurrent episodes of high intraocular pressure accompanied by mild inflammation.
 - CC Excl:** See code: 364.00

364.23 Lens-induced iridocyclitis
DEF: Inflammation of iris; due to immune reaction to proteins in lens following trauma or other lens abnormality.

364.24 Vogt-Koyanagi syndrome
DEF: Uveomeningitis with exudative iridocyclitis and choroiditis; causes depigmentation of hair and skin, detached retina; tinnitus and loss of hearing.

364.3 Unspecified iridocyclitis
 Uveitis NOS

CC Excl: See code: 364.00–364.3

5th **364.4 Vascular disorders of iris and ciliary body**

364.41 Hyphema
 Hemorrhage of iris or ciliary body
DEF: Hemorrhage in anterior chamber; also called hyphemia or “blood shot” eyes.

364.42 Rubeosis iridis
 Neovascularization of iris or ciliary body
DEF: Blood vessel and connective tissue formation on surface of iris; symptomatic of diabetic retinopathy, central retinal vein occlusion and retinal detachment.

5th **364.5 Degenerations of iris and ciliary body**

364.51 Essential or progressive iris atrophy

364.52 Iridoschisis
DEF: Splitting of the iris into two layers.

364.53 Pigmentary iris degeneration
 Acquired heterochromia
 Pigment dispersion syndrome
 Translucency } of iris

364.54 Degeneration of pupillary margin
 Atrophy of sphincter
 Ectropion of pigment epithelium } of iris

364.55 Miotic cysts of pupillary margin
DEF: Serous-filled sacs in pupillary margin of iris.

364.56 Degenerative changes of chamber angle

364.57 Degenerative changes of ciliary body

364.59 Other iris atrophy
 Iris atrophy (generalized) (sector shaped)

5th **364.6 Cysts of iris, ciliary body, and anterior chamber**

EXCLUDES miotic pupillary cyst (364.55)
 parasitic cyst (360.13)

364.60 Idiopathic cysts
DEF: Fluid-filled sacs in iris or ciliary body; unknown etiology.

364.61 Implantation cysts
 Epithelial down-growth, anterior chamber
 Implantation cysts (surgical) (traumatic)

364.62 Exudative cysts of iris or anterior chamber

364.63 Primary cyst of pars plana
DEF: Fluid-filled sacs of outermost ciliary ring.

364.64 Exudative cyst of pars plana
DEF: Protein, fatty-filled sacs of outermost ciliary ring; due to fluid leak from blood vessels.

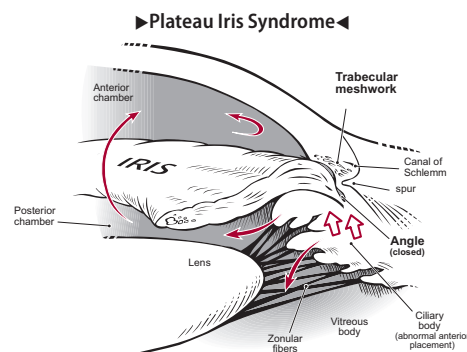
5th **364.7 Adhesions and disruptions of iris and ciliary body**
EXCLUDES flat anterior chamber (360.34)

364.70 Adhesions of iris, unspecified
 Synechiae (iris) NOS

364.71 Posterior synechiae
DEF: Adhesion binding iris to lens.

364.72 Anterior synechiae
DEF: Adhesion binding the iris to cornea.

364.73 Goniosynechiae
 Peripheral anterior synechiae
DEF: Adhesion binding the iris to cornea at the angle of the anterior chamber.



364.74 Pupillary membranes

Iris bombé
 Pupillary: Iris bombé
 Pupillary: seclusion
 occlusion

DEF: Membrane traversing the pupil and blocking vision.

364.75 Pupillary abnormalities

Deformed pupil Rupture of sphincter,
 Ectopic pupil pupil

364.76 Iridodialysis

DEF: Separation of the iris from the ciliary body base; due to trauma or surgical accident.

364.77 Recession of chamber angle

DEF: Receding of anterior chamber angle of the eye; restricts vision.

5th **364.8 Other disorders of iris and ciliary body**

AHA: 2Q, '07, 9

364.81 Floppy iris syndrome

Intraoperative floppy iris syndrome [IFIS]
 Use additional E code to identify cause, such as:
 sympatholytics [antiadrenergics] causing adverse effect in therapeutic use (E941.3)

DEF: Condition complicating cataract surgery for patients who have received alpha blocker treatment for urinary retention problems; iris dilator muscle fails to dilate, and the iris may billow or flap.
AHA: 4Q, '07, 77, 79

364.82 Plateau iris syndrome

DEF: ▶A postoperative chronic angle-closure glaucoma characterized by closing of the anterior chamber angle secondary to a large or anteriorly positioned ciliary body that impairs the normal flow of aqueous fluid. ◀
AHA: ▶4Q, '08, 112 ◀

364.89 Other disorders of iris and ciliary body

Prolapse of iris NOS
EXCLUDES prolapse of iris in recent wound (871.1)

364.9 Unspecified disorder of iris and ciliary body

4th **365 Glaucoma**

EXCLUDES blind hypertensive eye [absolute glaucoma] (360.42)
 congenital glaucoma (743.20–743.22)

DEF: Rise in intraocular pressure restricting blood flow; multiple causes.

5th **365.0 Borderline glaucoma [glaucoma suspect]**

AHA: 1Q, '90, 8

365.00 Preglaucoma, unspecified

365.01 Open angle with borderline findings

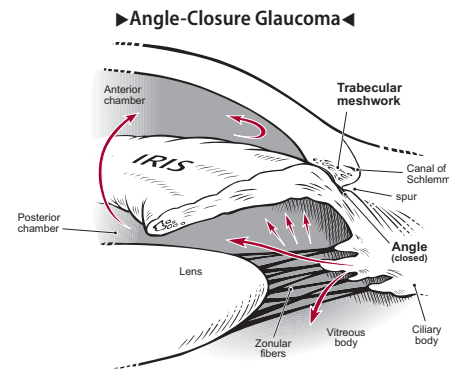
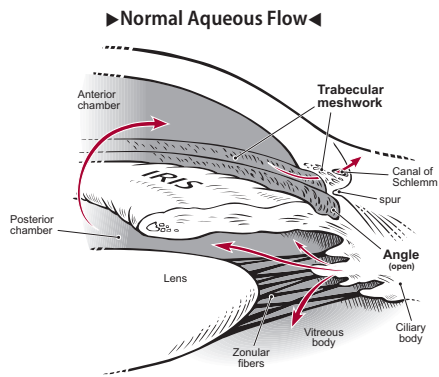
Open angle with:
 borderline intraocular pressure
 cupping of optic discs
DEF: Minor block of aqueous outflow from eye.

365.02 Anatomical narrow angle

365.03 Steroid responders

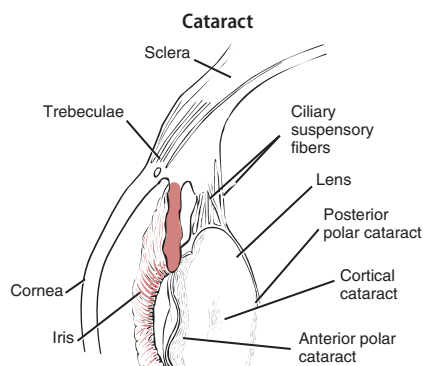
365.04 Ocular hypertension

DEF: High fluid pressure within eye; no clear cause.



- ✓5th 365.1 **Open-angle glaucoma**
- 365.10 **Open-angle glaucoma, unspecified**
Wide-angle glaucoma NOS
- 365.11 **Primary open angle glaucoma**
Chronic simple glaucoma
DEF: High intraocular pressure, despite free flow of aqueous.
- 365.12 **Low tension glaucoma**
- 365.13 **Pigmentary glaucoma**
DEF: High intraocular pressure; due to iris pigment granules blocking aqueous flow.
- 365.14 **Glaucoma of childhood**
Infantile or juvenile glaucoma
- 365.15 **Residual stage of open angle glaucoma**
- ✓5th 365.2 **Primary angle-closure glaucoma**
DEF: ►Glaucoma caused by a shift in the position of the iris of the eye that blocks the surface of the trabecular meshwork causing impairment of the normal flow of aqueous fluid. ◀
- 365.20 **Primary angle-closure glaucoma, unspecified**
- 365.21 **Intermittent angle-closure glaucoma**
Angle-closure glaucoma:
interval
subacute
DEF: Recurring attacks of high intraocular pressure; due to blocked aqueous flow.
- 365.22 **Acute angle-closure glaucoma** cc
DEF: Sudden, severe rise in intraocular pressure due to blockage in aqueous drainage.
CC Excl: See code: 365.22
- 365.23 **Chronic angle-closure glaucoma**
AHA: 2Q, '98, 16
- 365.24 **Residual stage of angle-closure glaucoma**
- ✓5th 365.3 **Corticosteroid-induced glaucoma**
DEF: Elevated intraocular pressure; due to long-term corticosteroid therapy.
- 365.31 **Glaucomatous stage**
- 365.32 **Residual stage**
- ✓5th 365.4 **Glaucoma associated with congenital anomalies, dystrophies, and systemic syndromes**
- 365.41 **Glaucoma associated with chamber angle anomalies**
- 365.42 **Glaucoma associated with anomalies of iris**
- 365.43 **Glaucoma associated with other anterior segment anomalies**
- 365.44 **Glaucoma associated with systemic syndromes**
*Code first associated disease, as neurofibromatosis (237.7)
Sturge-Weber (-Dimitri) syndrome (759.6)*

- ✓5th 365.5 **Glaucoma associated with disorders of the lens**
- 365.51 **Phacolytic glaucoma**
DEF: Elevated intraocular pressure; due to lens protein blocking aqueous flow.
- 365.52 **Pseudoexfoliation glaucoma**
DEF: Glaucoma characterized by small grayish particles deposited on the lens.
- 365.59 **Glaucoma associated with other lens disorders**
- ✓5th 365.6 **Glaucoma associated with other ocular disorders**
- 365.60 **Glaucoma associated with unspecified ocular disorder**
- 365.61 **Glaucoma associated with pupillary block**
DEF: Acute, open-angle glaucoma caused by mature cataract; aqueous flow is blocked by lens material and macrophages.
- 365.62 **Glaucoma associated with ocular inflammations**
- 365.63 **Glaucoma associated with vascular disorders**
- 365.64 **Glaucoma associated with tumors or cysts**
- 365.65 **Glaucoma associated with ocular trauma**
- ✓5th 365.8 **Other specified forms of glaucoma**
- 365.81 **Hypersecretion glaucoma**
- 365.82 **Glaucoma with increased episcleral venous pressure**
- 365.83 **Aqueous misdirection**
Malignant glaucoma
DEF: A form of secondary angle-closure glaucoma that occurs when aqueous humor flows into the posterior chamber of the eye (vitreous) rather than through the normal recycling channels.
AHA: 4Q, '02, 48
- 365.89 **Other specified glaucoma**
AHA: 2Q, '98, 16
- 365.9 **Unspecified glaucoma**
AHA: 3Q, '03, 14; 2Q, '01, 16
H40.9 Unspecified glaucoma I-10
- ✓4th 366 **Cataract**
EXCLUDES congenital cataract (743.30-743.34)
DEF: A variety of conditions that create a cloudy, or calcified lens that obstructs vision.
- ✓5th 366.0 **Infantile, juvenile, and presenile cataract**
- 366.00 **Nonsenile cataract, unspecified**
- 366.01 **Anterior subcapsular polar cataract**
DEF: Defect within the front, center lens surface.
- 366.02 **Posterior subcapsular polar cataract**
DEF: Defect within the rear, center lens surface.
- 366.03 **Cortical, lamellar, or zonular cataract**
DEF: Opacities radiating from center to edge of lens; appear as thin, concentric layers of lens.
- 366.04 **Nuclear cataract**
- 366.09 **Other and combined forms of nonsenile cataract**



- 366.1 Senile cataract**
AHA: 3Q, '91, 9; S-0, '85, 10
- 366.10 Senile cataract, unspecified** **A**
AHA: 1Q, '03, 5
- 366.11 Pseudoexfoliation of lens capsule** **A**
- 366.12 Incipient cataract** **A**
Cataract: coronary immature NOS Cataract: punctate Water clefts
DEF: Minor disorders of lens not affecting vision; due to aging.
- 366.13 Anterior subcapsular polar senile cataract** **A**
- 366.14 Posterior subcapsular polar senile cataract** **A**
- 366.15 Cortical senile cataract** **A**
- 366.16 Nuclear sclerosis** **A**
Cataracta brunescens
Nuclear cataract
AHA: 4Q, '07, 79
- 366.17 Total or mature cataract** **A**
- 366.18 Hypermature cataract** **A**
Morgagni cataract
- 366.19 Other and combined forms of senile cataract** **A**
- 366.2 Traumatic cataract**
- 366.20 Traumatic cataract, unspecified**
- 366.21 Localized traumatic opacities**
Vossius' ring
- 366.22 Total traumatic cataract**
- 366.23 Partially resolved traumatic cataract**
- 366.3 Cataract secondary to ocular disorders**
- 366.30 Cataracta complicata, unspecified**
- 366.31 Glaucomatous flecks (subcapsular)**
Code first underlying glaucoma (365.0-365.9)
- 366.32 Cataract in inflammatory disorders**
Code first underlying condition, as:
chronic choroiditis (363.0-363.2)
- 366.33 Cataract with neovascularization**
Code first underlying condition, as:
chronic iridocyclitis (364.10)
- 366.34 Cataract in degenerative disorders**
Sunflower cataract
Code first underlying condition, as:
chalcosis (360.24)
degenerative myopia (360.21)
pigmentary retinal dystrophy (362.74)
- 366.4 Cataract associated with other disorders**
- 366.41 Diabetic cataract**
Code first diabetes (249.5, 250.5)
AHA: 3Q, '91, 9; S-0, '85, 11
- 366.42 Tetanic cataract**
Code first underlying disease, as:
calcinosis (275.4)
hypoparathyroidism (252.1)
- 366.43 Myotonic cataract**
Code first underlying disorder (359.21, 359.23)
- 366.44 Cataract associated with other syndromes**
Code first underlying condition, as:
craniofacial dysostosis (756.0)
galactosemia (271.1)
- 366.45 Toxic cataract**
Drug-induced cataract
Use additional E code to identify drug or other toxic substance
- 366.46 Cataract associated with radiation and other physical influences**
Use additional E code to identify cause
- 366.5 After-cataract**
- 366.50 After-cataract, unspecified**
Secondary cataract NOS
- 366.51 Soemmering's ring**
DEF: A donut-shaped lens remnant and a capsule behind the pupil as a result of cataract surgery or trauma.
- 366.52 Other after-cataract, not obscuring vision**
- 366.53 After-cataract, obscuring vision**
- 366.8 Other cataract**
Calcification of lens
- 366.9 Unspecified cataract**
H26.9 Unspecified cataract **I-10**
- 367 Disorders of refraction and accommodation**
- 367.0 Hypermetropia**
Far-sightedness Hyperopia
DEF: Refraction error, called also hyperopia, focal point is posterior to retina; abnormally short anteroposterior diameter or subnormal refractive power; causes farsightedness.
- 367.1 Myopia**
Near-sightedness
DEF: Refraction error, focal point is anterior to retina; causes near-sightedness.
- 367.2 Astigmatism**
- 367.20 Astigmatism, unspecified**
- 367.21 Regular astigmatism**
- 367.22 Irregular astigmatism**
- 367.3 Anisometropia and aniseikonia**
- 367.31 Anisometropia**
DEF: Eyes with refractive powers that differ by at least one diopter.
- 367.32 Aniseikonia**
DEF: Eyes with unequal retinal imaging; usually due to refractive error.
- 367.4 Presbyopia**
DEF: Loss of crystalline lens elasticity; causes errors of accommodation; due to aging.
- 367.5 Disorders of accommodation**
- 367.51 Paresis of accommodation**
Cycloplegia
DEF: Partial paralysis of ciliary muscle; causing focus problems.
- 367.52 Total or complete internal ophthalmoplegia**
DEF: Total paralysis of ciliary muscle; large pupil incapable of focus.
- 367.53 Spasm of accommodation**
DEF: Abnormal contraction of ciliary muscle; causes focus problems.